

**Garfield:**

- Two-stage left turn box
- Wide crosswalk
- Vehicles speed when they turn

**Fillmore:**

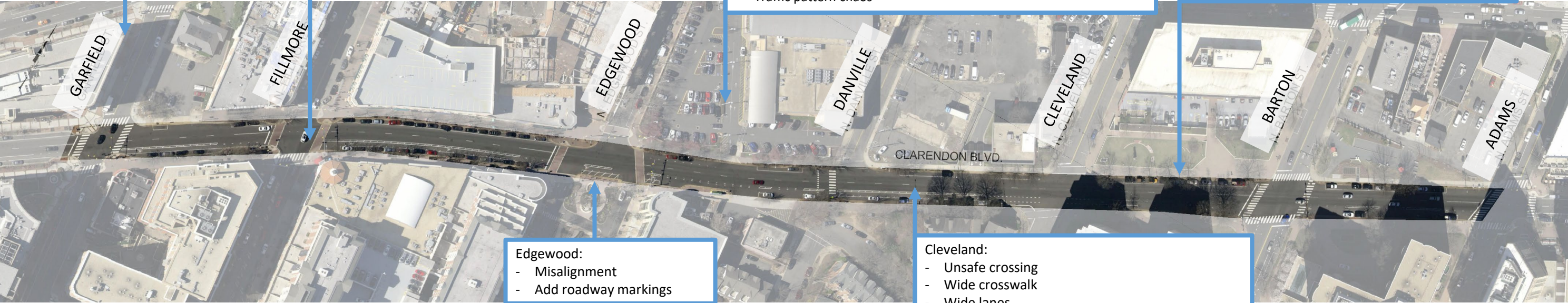
- Two-stage left turn box
- Better signage for Fillmore garages

**Edgewood to Danville Area:**

- Unsafe for peds
- Unsafe midblock crossing (3)
- Visibility blocked
- Bike lane blocked by delivery truck (in front of Starbucks)
- Prioritize cyclist and scooter safety
- Protected bike lane (2)
- Unsafe for bikes
- Add a raised crosswalk
- Add a crosswalk
- Add lights to crosswalk (2)
- Speeding
- Vehicles cutting across the bike lane from Edgewood
- Public transit in the area that needs improvements
- Remove parking spaces to make space for left turns from Wilson (2)
- make one way entrance from Wilson and exit to Danville
- Whole Foods parking creates backups and chaos (3)
- Traffic pattern chaos

**Barton:**

- Add median for pedestrian safety
- Unsafe crossing
- Wide crosswalk
- Wide lanes
- Create bump outs
- Right on red issues, speeding on right turn (2)
- Bus causing a blind spot for right turning traffic
- speeding



**Edgewood:**

- Misalignment
- Add roadway markings

**Cleveland:**

- Unsafe crossing
- Wide crosswalk
- Wide lanes
- Create bump outs
- Add bollards to painted bump out
- Speeding on right turn
- Vehicles cut through bump outs as they turn right
- speeding



Non location specific comments:

- Increase visibility of bike lanes
- Protected bike lane
- Vehicles swerving and changing lanes
- Double parking
- Remove parking to increase visibility at crosswalks

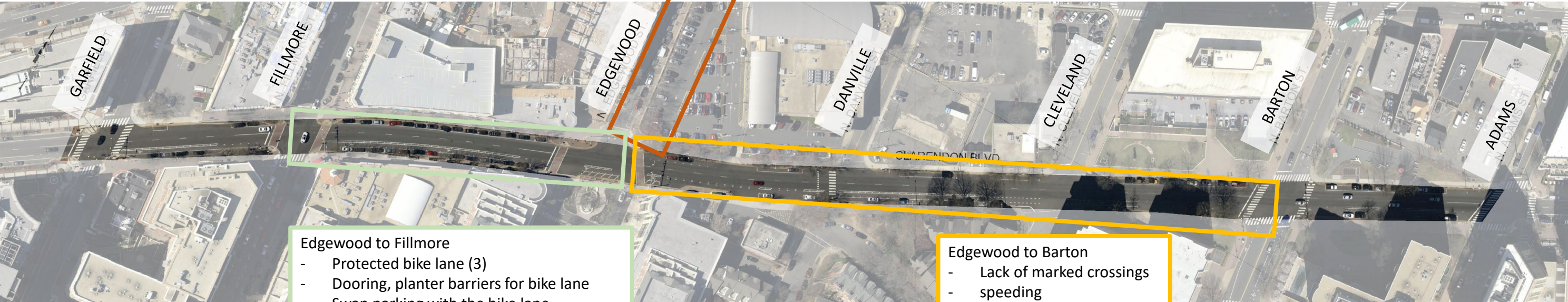
From Wilson to Clarendon  
- Reduce parking

Edgewood to Fillmore

- Protected bike lane (3)
- Dooring, planter barriers for bike lane
- Swap parking with the bike lane
- Vehicles parking in the bike lane
- speeding

Edgewood to Barton

- Lack of marked crossings
- speeding



Bike Comments	Number of Comments
protected bike lane	6
two-stage left turn box	3
protected bike lane, parking in the bike lane	1
increase visibility of bike lanes	1
prioritize cyclist and scooter safety	1
protected bike lane, swap parking with the bike lane	1
unsafe for bikes	1
bike lane blocked by delivery truck	1
protected bike lane, dooring, planter barriers for bike lane	1
<b>Grand Total</b>	<b>16</b>

Unsafe Vehicle Behaviors	Number of Comments
speeding	3
speeding on right turn	3
vehicles cutting across the bike lane from edgewood	1
right turns in the bike lanes	1
vehicles speed when they turn	1
vehicles swerving and changing lanes	1
right on red issues	1
vehicles cut through bumpouts as they turn right	1
<b>Grand Total</b>	<b>12</b>

Pedestrian Safety Comments	Number of Comments
unsafe midblock crossing	3
unsafe crossing	2
visibility blocked	1
lack of marked crossings	1
Add median for pedestrian safety	1
unsafe for pedestrians	1
<b>Grand Total</b>	<b>9</b>

Categories and number of comments:

1. Bike comments – 16
2. Unsafe vehicle behaviors – 12
3. Pedestrian safety comments – 9
4. Crosswalk comment - 7
5. Parking comment – 7
6. Lane comment – 4
7. Curb comment - 3
8. Bus comment - 2

Summary:

- Top three categories with comments:
  1. Bikes
    - – 9 comments related to adding a PBL
  2. Unsafe vehicle behaviors
    - – 7 comments related to speeding or speeding when making a turn
  3. Pedestrian safety
    - – 6 comments related to unsafe crossings or unsafe midblock crossings