

ARLINGTON COUNTY PROFILE

OVERVIEW OF ARLINGTON

Arlington County is located in northern Virginia, directly across the Potomac River from Washington, D.C. The County encompasses 25.8 square miles of land, which was originally split off from Fairfax County in 1801 and ceded by Virginia to be included in the ten-mile square Federal District. In 1847, however, Congress allowed the land to return to the jurisdiction of Virginia following a vote in favor of retrocession by its members. This area was then known as Alexandria City and Alexandria County. In 1920, to avoid confusion, the county was renamed Arlington County.

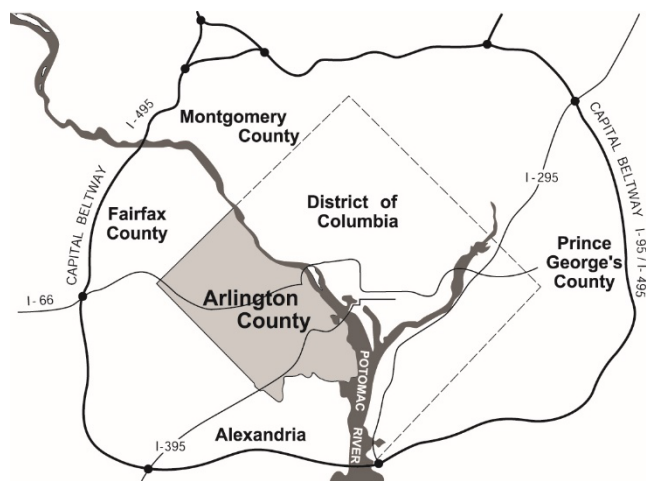
Annexation of any part of Arlington County by neighboring jurisdictions is prohibited by present law unless the entire County is annexed with the approval of County voters. There are no jurisdictions with overlapping debt or taxing powers. The water and sewage systems are operated on a self-supporting basis by the County government.

Arlington's location in the center of the Washington metropolitan region, just five minutes from Washington by car or Metrorail, has made the County a highly desirable business and residential location. Arlington has maintained high-quality residential neighborhoods while supporting well-managed growth. High-density commercial and residential development is focused around Metro stations in the Rosslyn-Ballston corridor and the Richmond Highway corridor, which includes both Pentagon City and Crystal City.

Arlington County has an estimated 2022 population of 235,500, a decrease of 1.3% since the 2020 decennial census count of 238,643. Additionally, Arlington is home to an estimated 227,200 jobs, as of January 1, 2022.

Almost all land in Arlington County has been developed. This development consists of extensive single-family residential areas as well as commercial, office, and multi-family residential structures.

Economic activity in Arlington County has historically been closely associated with numerous governmental activities of the Washington Metropolitan region. In 2022, about 22.1 percent (or about 50,300) of the jobs in Arlington County are with the numerous federal, state, or local government agencies. In recent years, however, the private employment base, particularly in the service sector, has increased substantially. The 2022 estimates show that sectors of the professional and technical services (27.6 percent and 62,800 jobs) and other services (21.7 percent and 49,400 jobs) have become the top industries for employment in Arlington County.



ORGANIZATION OF ARLINGTON COUNTY GOVERNMENT

The government of Arlington County has been organized according to the County Manager Plan of Government since 1932. Arlington County was the first jurisdiction in the United States to adopt a manager form of government by popular vote.

The five members of the County Board are elected at large for staggered, four-year terms. No more than two members are elected at one time. The Chairman of the County Board is elected annually by the members.

The County Board is responsible for several appointments. The County Board appoints a County Manager to serve as the chief executive and administrator of the County. The County Manager serves at the pleasure of the County Board, implements its policies, directs business and administrative procedures, and appoints department directors.

Assisting the County Manager are two Deputy County Managers, three Assistant County Managers and the Directors of 12 departments: Fire; Police; Public Safety Communications and Emergency Management; Environmental Services; Human Services; Economic Development; Community Planning, Housing and Development; Parks and Recreation; Management and Finance; Libraries; Human Resources; and Technology Services.

The County Board also appoints an Auditor to complement and augment the County’s existing internal auditing program. The auditor, and an advisory committee, report directly to the County Board and focus on tightening financial oversight and deepening program performance review.

Finally, the County Board appoints a County Attorney. The County Attorney provides legal services to the County Board, County agencies and personnel, elected County officials, independent County boards and commissions.

The operation of public schools in Arlington County is the responsibility of a five-member School Board. School Board members serve staggered, four-year terms in a sequence similar to that of County Board members.

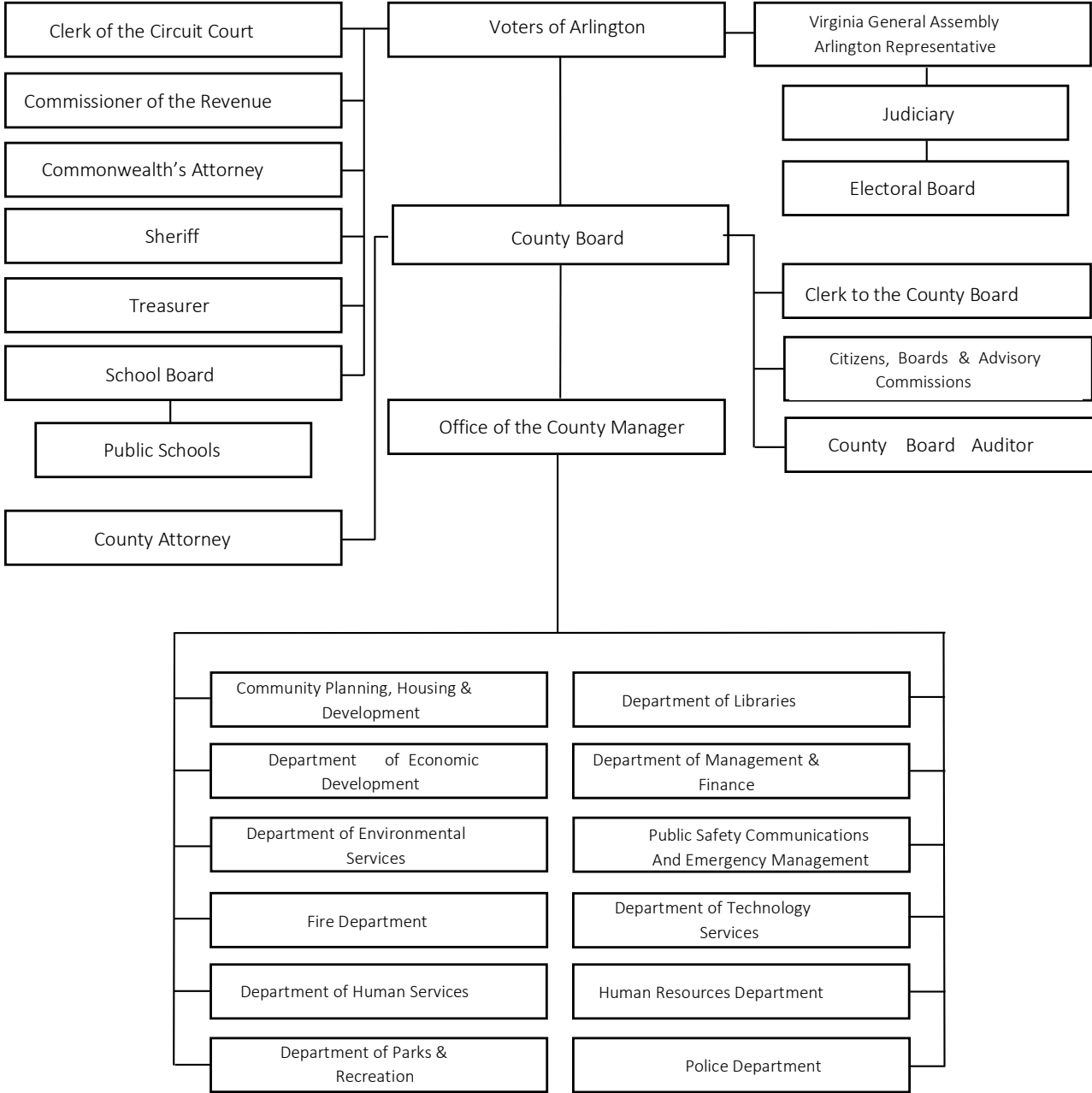
A 1992 revision of the State Code provided a local option to elect the School Board; Arlington voters chose to exercise that option via a November 1993 referendum. As of November 1994 and continuing each year thereafter, School Board members are elected.

The Superintendent of Schools is appointed by the School Board for a four-year term; the Superintendent administers the operations of the County’s public schools. The local share of the cost of operating public schools in the County is met with an appropriation and transfer by the County Board from the County’s General Fund. Operations of the School Board, however, are independent of the County Board and the County administration as prescribed by Virginia law.

In addition to the County Board, other elected County officials include the Commonwealth’s Attorney, Sheriff, Commissioner of the Revenue, Treasurer, and Clerk of the Circuit Court. The Judges of the Circuit Court, the General District Court, and the Juvenile and Domestic Relations District Court are appointed by the State legislature.

The structure of Arlington County’s Government is depicted in an organizational chart on the following page.

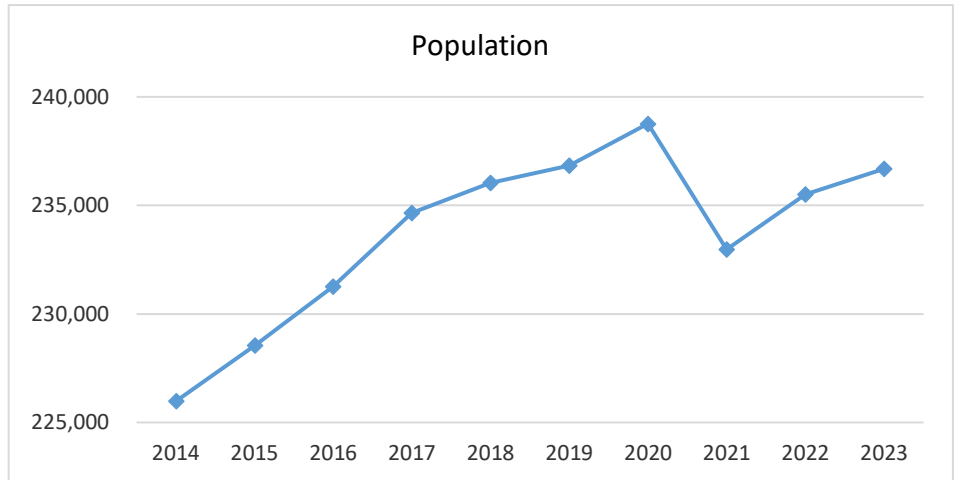
ORGANIZATION OF ARLINGTON COUNTY GOVERNMENT



DEMOGRAPHICS

The Department of Community Planning, Housing and Development (CPHD) estimates Arlington County’s 2022 population to be 235,500. Arlington continues to be among the most densely populated jurisdictions in the Country. The County’s population has grown since 2014 with a dip in population in 2021 following the COVID-19 pandemic. The population has started to recover and is expected to increase going forward.

The new 2020 Estimation model utilizes the Master Housing Unit Database (MHUD) (updated twice a year), most recent vacancy data from Costar and the American Community Survey, and average household size factors from the American Community Survey. The MHUD provides a complete snapshot of all housing in Arlington. This new method applies a



vacancy/occupancy rate and average household size factor to each housing unit and estimates the population for each unit or multifamily complex. In developing this methodology, the estimates were compared to the decennial count and intercensal estimates produced by the Census Bureau.

CPHD estimates that 19.6 percent (46,140 persons) of the population are under the age 20. Individuals between the ages of 20-24 make up 6.8 percent or 16,090 persons. Those between the ages of 25-34 make up the largest share of the population at 23.6 percent or 55,520 persons. Persons between the ages of 35-44 represent 16.5 percent of the population (or 38,950 persons), those between the ages 45-64 make up 22.4 percent (or 52,640 persons), those between the ages of 65-84 make up 9.7 percent (or 22,930 persons), and those 85 and over represent 1.4 percent of the population (or 3,200 persons).

RACIAL/ETHNIC COMPOSITION

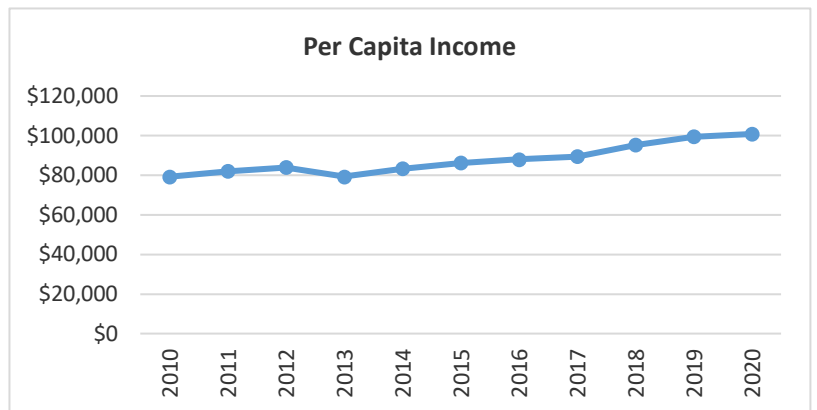
Arlington County takes pride in, and gains vitality from, the diversity of its population. According to the 2020 Census, 58.5 percent of Arlington residents are white, 15.7 percent are Hispanic, 8.5 percent are black or African-American, 11.5 percent are Asian or Other Pacific Islanders, less than one percent are American Indian or Alaska Native, and 5.7 percent identified as another race or two or more races. (Note: percentages may not add due to rounding.)

CPHD estimates that the aggregate population of Arlington increased by 14.9 percent between 2010 and 2020. From 2010 to 2020, the largest increase in population among the racial/ethnic groups was an increase of about 7,473 among the Asian population. Among other groups, the population of two or more races also increased substantially, by 6,900 persons. The Hispanic population increased by 5,980 persons, and the white population increased by 6,692 persons between 2010 and 2020. The following table shows the change in population among various racial/ethnic groups from 2010 to 2020. The 2010 and 2020 figures are from the Decennial Censuses.

Racial/Ethnic Group	2010	2020	% Change
Non-Hispanic/Latino			
White	132,961	139,653	5.0%
Black or African American	17,088	20,330	19.0%
American Indian or Alaska Native	394	258	-34.5%
Asian	19,762	27,235	37.8%
Native Hawaiian or Other Pacific Islander	133	118	-11.3%
Some Other Race	611	1,491	144.0%
Two or More Races	5,296	12,196	130.3%
Total Non-Hispanic/Latino	176,245	201,281	14.2%
Hispanic/Latino	31,382	37,362	19.1%
TOTAL	207,627	238,643	14.9%

EDUCATION

Arlington’s population is among the most highly educated in the country. According to the U.S. Census Bureau 2020 American Community Survey, 94.9 percent of all household residents age 25 and older were high school graduates, 75.8 percent were college graduates, and 40.5 percent had graduate or professional degrees. Of the Arlington Public School (APS) class of 2021, 94 percent planned to pursue higher education, and the average expenditure per pupil was expected to be \$20,000 in fiscal year 2022.



PERSONAL INCOME

The educational achievements of Arlington’s population are reflected in the County’s income statistics as well. In 2020, the Bureau of Economic Analysis reported that Arlington’s per capita personal income was \$100,823. According to the U.S. Census American Community Survey, the median household income in Arlington County in 2020 was \$122,604. The Per Capita Income graph above shows the growth in per capita personal income since 2010. Income figures for 2010 through 2020 are from the U.S. Bureau of Economic Analysis.

HOUSING

According to CPHD estimates, there are 120,200 total housing units in Arlington as of January 2022. A housing unit is a multi-family dwelling, a single-family dwelling attached to other dwellings, or a single-family detached dwelling. The majority (71.3 percent or 85,700) of housing units in Arlington are multi-family. There are an estimated 27,500 single-family detached (22.9 percent), and 7,000 single-family attached housing units (5.8 percent) in Arlington. Since 2010, growth in housing units has been largely due to multi-family development. Between 2020 and January 2022, 3,000 new multi-family units have been completed (an increase of 3.6 percent), compared to a net of 100 single-family attached units. There has been a net gain of 200 single family detached units during the same time span. According to CPHD estimates, owners occupy 38.5 percent and renters occupy 61.5 percent of occupied housing units.

HOUSEHOLD COMPOSITION

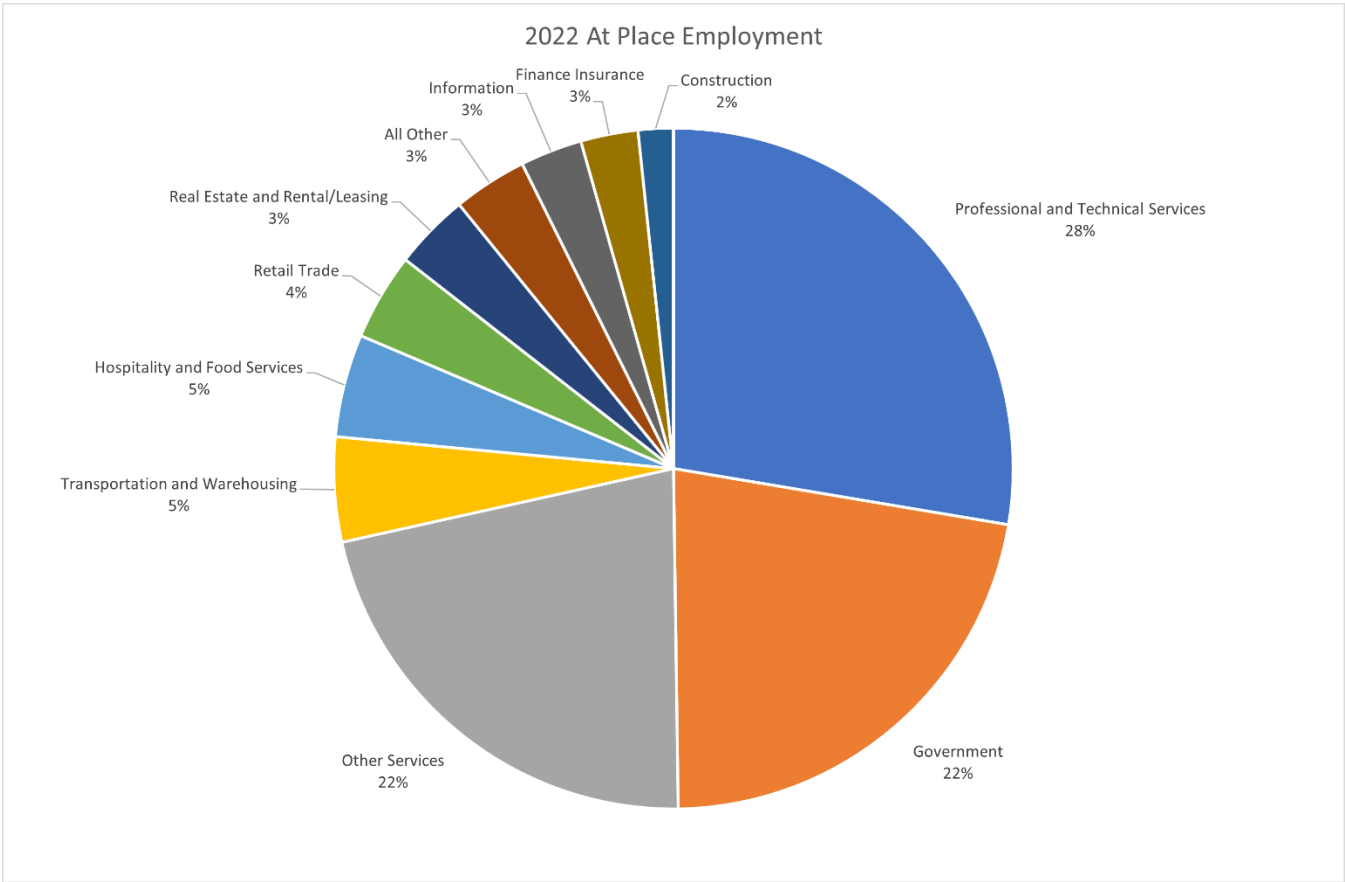
All persons living in a housing unit are termed a household. As of January 2022, CPHD estimates that there are 112,300 households in Arlington County. According to the 2020 Census, the average household size is 2.14 persons. The 2020 American Community Survey estimates 46 percent of Arlington households were family households and 54 percent were non-family households.

COMMUNITY FACILITIES IN ARLINGTON

▪ County Owned Parkland	924 acres	▪ Rectangle Fields	42
▪ NOVA Parks	136 acres	▪ Libraries	8
▪ Multi-Use Trails (Off-Street)	52	▪ Nature Centers	3
▪ County Owned Parks	148	▪ 55+ Centers	4
▪ Tennis and Basketball Courts	185	▪ Indoor Facilities	17
▪ Diamond Fields	35	▪ Fire Stations	9

AT-PLACE EMPLOYMENT

According to Arlington County estimates, the total number of jobs in the County decreased by about 3.2 percent between 2020 and 2022. The service sector comprises a significant share of jobs in Arlington. About 27.6 percent of all jobs are in the professional and technical services sector. Another 21.7 percent of jobs are in other service sectors, including administrative, education, and health. The government sector also continues to comprise a large share of Arlington jobs. About 22.1 percent (50,300 jobs) of the County’s January 2022 employment is estimated to be in government. 2017 was the first year in which a sector (professional and technical services) other than government held the highest percentage of at-place jobs in Arlington County.



At-Place Employment

Professional and Technical Services	62,800
Government	50,300
Other Services	49,400
Transportation and Warehousing	11,300
Hospitality and Food Services	11,100
Retail Trade	9,400
Real Estate and Rental/Leasing	8,200
All Other	8,000
Information	6,700
Finance Insurance	6,200
Construction	3,800
TOTAL	227,200

- Source: Sector employment are Arlington County CPHD estimates based on data from the U.S. Bureau of Economic Analysis for the year 2018 (most current available). Unemployment data is from the U.S. Bureau of Labor Statistics Local Area Unemployment Statistics (LAUS).
- Note: Jobs by sector may not add due to rounding.

TOP 10 PRINCIPAL PRIVATE EMPLOYERS

COMPANY	NATURE OF BUSINESS
Accenture	Business Services
Amazon	Electronic Shopping
Bloomberg BNA	Legal, Tax and Business News
Booz Allen Hamilton	Business Services
Deloitte	Business Services
Gartner	Business Services
Grant Thornton	Business Services
Lidl	Grocery Stores
Nestle	Durable Goods
Virginia Hospital Center	Medical Services

Source: Arlington Economic Development

SELECTED SERVICE INDICATORS

	FY 2021 Actual	FY 2022 Estimate	FY 2023 Estimate
General Obligation Bond Rating	Aaa/AAA/AAA	Aaa/AAA/AAA	Aaa/AAA/AAA
New Voters Registered by Electoral Board (Calendar Year)	11,768	10,000	12,000
Inspections Conducted for Fire Code Enforcement, fire protection system, and hazardous materials inspections	1,936	3,400	3,400
Percentage of Fire Emergencies Reached Within Four Minutes of Dispatch	62%	60%	60%
Fire/EMS/Public Service Responses	55,229	55,000	55,000
Refuse Collected on County and Contracted Routes (Tons)	29,274	27,036	25,700
Total Curbside Recycling Tonnage Collected	10,049	9,544	10,000
Licensed Child Care Facilities (Family Day Care Homes)	129	135	135
Number of resident registrations in Parks and Recreation programs	39,193	45,000	60,000
Number of individuals registered with the Office of 55+ Programs	2,502	4,000	5,000
Police response time for Priority 1 calls (minutes from dispatch to arrival)	4:56	4:55	4:53