

20 PAINT, BUILD, CREATE! 24 ACTIVITY LIST



GLITTER BRACELETS



WHERE'S THE S.T.E.A.M.?

These glitter tube bracelets are a simple way to illustrate density. The glitter floats freely around the tube because it is less dense and flat. It's shape and its density make it easy for the water to push it around the tube. The beads are denser and have a hole in the center, making it harder for the water to push them around the tube.

FRACTAL PATTERNS



Glue is made up of water and a chemical compound called polyvinyl acetate (PVA). When you add food coloring to the glue, it generally stays in one place due to the structure of the PVA. When the soap is added, it breaks the surface tension of the water and allows the soap to move through the glue, taking the food coloring with it.

BALANCING BUTTERFLY

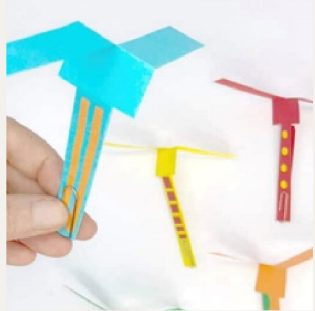


When the butterfly shape is created, the center of gravity would be somewhere in the middle of the butterfly. But, by adding the magnetic pieces to the wings of the butterfly, you shift the center of gravity to the tip of its body and therefore the butterfly can balance perfectly.

'24 PAINT, BUILD, CREATE!



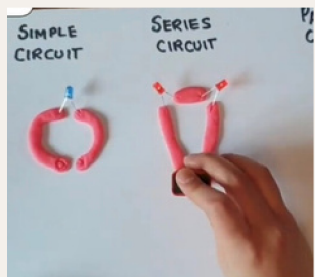
PAPER HELICOPTERS



WHERE'S THE S.T.E.A.M.?

As your paper helicopter falls, air pushes up against the blades which slow down the fall. Because there are two blades going in different directions, they are both getting pushed by the air but in opposite directions. Those two opposing pushes cause the paper helicopter to spin!

PLAYDOUGH CIRCUITS



A circuit is a complete and closed path that allows electricity to flow and must include:

- a source of electricity (battery)
- a material, or conductor, that allows current to pass through easily, (play dough)

You can create a circuit by making a path with playdough to link the positive and negative ends of the battery. This connection can be seen in the light that shows when the circuit is closed!

COLOR BINOCULARS



These colorful cardboard tubes are perfect for letting participants explore the vibrant world around them. By using their motor skills to create the tube with colorful film, kids will be able to explore color mixing and light and see how they interact!

'24 PAINT, BUILD, CREATE!



CARDBOARD BUILD ROOM

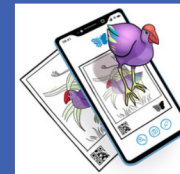
Stop by the gym for full creative freedom while you construct and engineer towers, car tracks and anything else you can imagine with tape and cardboard!

There is no sign up for this space so feel free to come and go as you please.

TECH & ENGINEERING ROOM

Learn more about technology and engineering with activities such as video game design, robotics programming, Lego engineering, and augmented reality coloring pages.

We will be using the programs such as Scratch video game design and QuiverVision in this space!



'24 PAINT, BUILD, CREATE!



STEAM ON WHEELS

Early Childhood will be hosting a space for preschoolers to try out toy car art and magnet play!

There will be a sign up for 25-minute rotations at 10 a.m., 10:30 a.m., 11 a.m., 11:30 a.m., 12 p.m. and 12:30 p.m. available outside the Early Childhood room the day of the event.

ASMR ROOM

Experience a space dedicated to Autonomous Sensory Meridian Response, or ASMR. Through specific video and audio stimulus, participants can see if they feel the tingling, static-like sensation across the scalp/back of the neck that ASMR is widely reported to give. This sensation is also said to be accompanied by feelings of relaxation and well-being which can aid in self-regulation.



'24 PAINT, BUILD, CREATE!



THE SHOP - LIBRARIES

Come race robots or sculpt 3D models using iPads, which can be 3D printed at Central Library!

Discover a wide range of resources in technology, learning, and fabrication that are available to the community in The Shop, Arlington Public Library's makerspace.

FITNESS STATION

Test your vertical jump and see how high you can stick your post-it note to the wall!

After a few attempts, you will get assistance subtracting your highest measurement by your own height to see how high you can jump. See how to match up to some sport legends.



'24 PAINT, BUILD, CREATE!



PAINT AND SIP

Adults can enjoy a paint and sip event as they create their own painting. Tea and coffee will be available for a warm and cozy painting session.

This activity is for registered participants only. Please view our website to register for free.

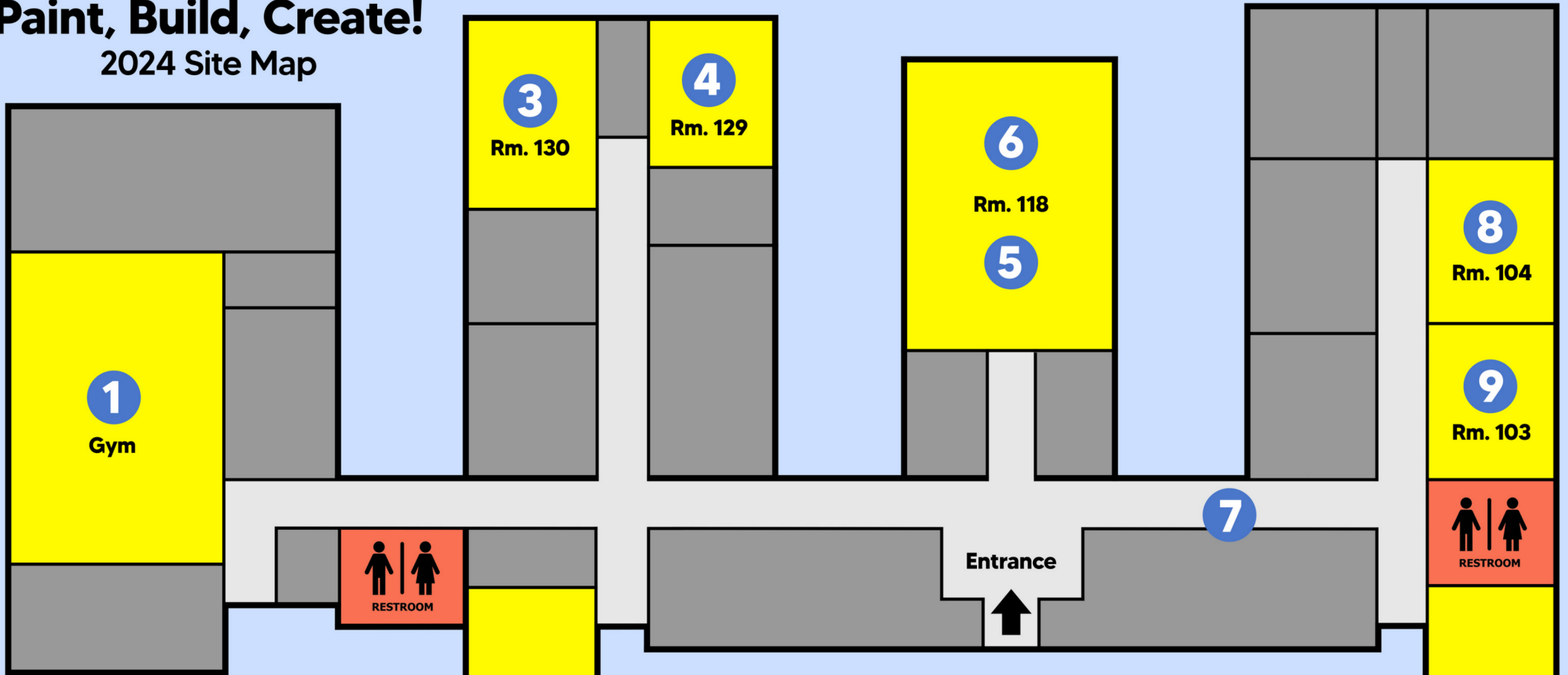
POPSICLE STICK CATAPULTS

Build your own catapult out of wooden popsicle sticks and other simple materials! Once your creation is engineered, test it out to see how far and/or how accurate you are able to shoot.



Paint, Build, Create!

2024 Site Map



1 Cardboard Construction Zone

- 2** Technology Room
- QuiverVision
 - Scratch Video Game Design
 - Lego Earthquakes
 - Switcheroo Coding Car

- 3** S.T.E.A.M. Stations #1
- Glitter Bracelets
 - Fractal Patterns

4 Paint and Sip

- 5** S.T.E.A.M. Stations #2
- Balancing Butterflies
 - Paper Helicopters
 - Playdough Circuits
 - Color Binoculars

6 The Shop - Libraries

7 Vertical Jump Station

- 8** Popsicle Stick Catapults
- 9** S.T.E.A.M. On Wheels
- Art Cars
 - Magnetic Car Play

10 ASMR Room