

**PUBLIC SPACES MASTER PLAN-  
IMPLEMENTATION ADVISORY COMMITTEE (PSMP-IAC)**

**Virtual Meeting**

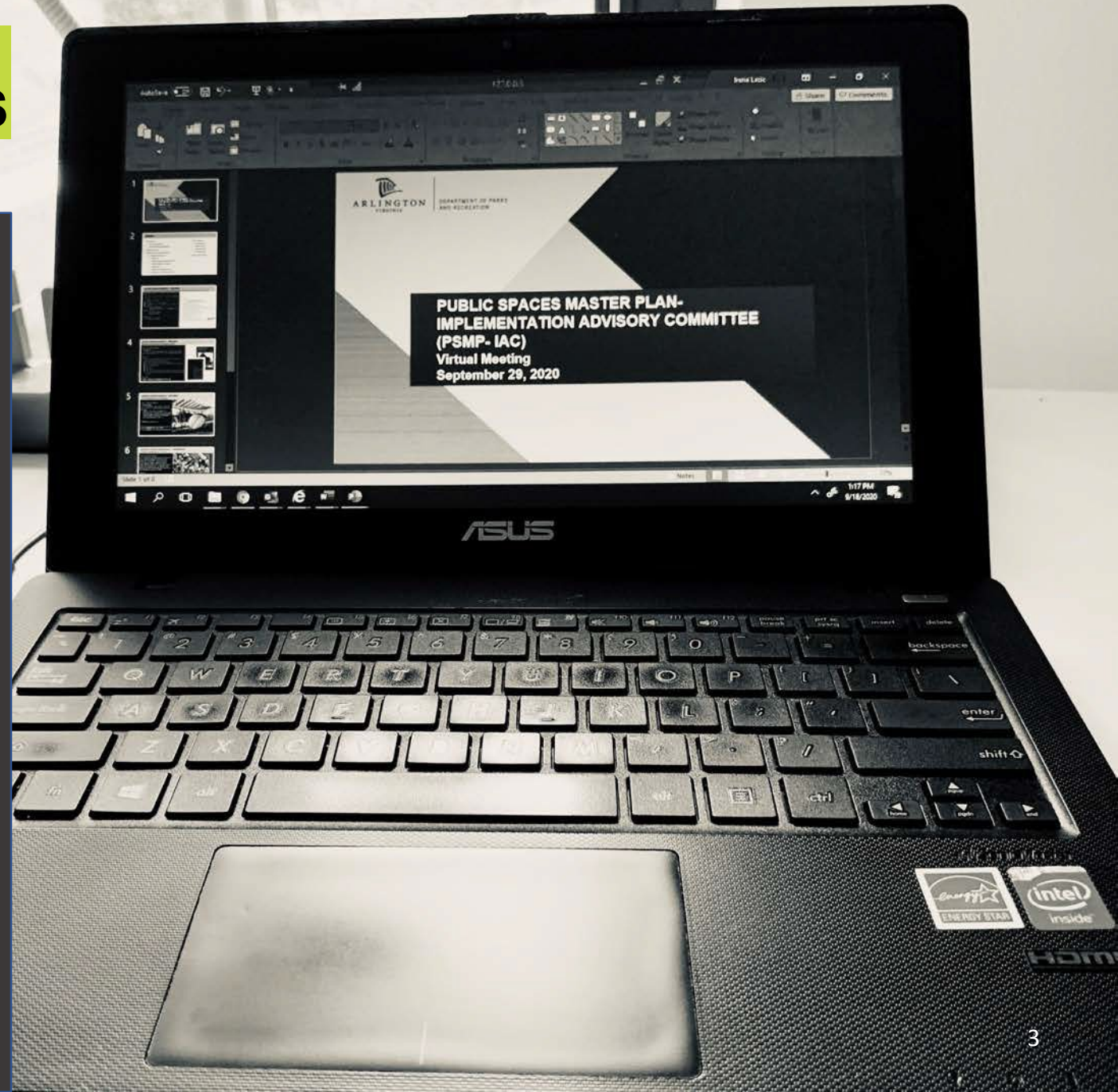
**March 31, 2022**

# AGENDA

- **Introduction - New PSMP-IAC Members**
- **Virtual Meeting Ground Rules**
- **Public Comment**
- **Annual PSMP Update**
  - **County Board Guidance - Progress**
  - **Selected Recommendations – Progress**
- **Next Steps**

# VIRTUAL MEETING GROUND RULES

- Thank you for being here!
- This meeting is being recorded
- Public comments go first
- **For this meeting, please:**
  - Mute your microphone unless you are speaking
  - Raise your hand using the “raise hand” feature to ask questions
  - If you’re on a phone, dial “\*6” to mute and unmute yourself
  - Use the “Chat” option for technical issues
  - Do not interrupt Committee’s discussion
  - Meeting recording & materials will be posted on the PSMP-IAC website



# PUBLIC COMMENT



# COUNTY BOARD GUIDANCE – BRIEF UPDATES

TASKS	PROGRESS & ANTICIPATED SCHEDULE
Appoint the PSMP Implementation Advisory Committee (PSMP-IAC)	Kick-off meeting- October 1, 2019, 12 meetings so far
Refine the Casual Use Space concept (Action Steps 1.3.1, 1.3.2 page 61)	Initiated in Spring 2020, anticipated completion 2022
Update the Natural Resources Management & Urban Forest Master Plans (Priority Action 10, Action 3.1., page 96)	Initiated in Summer 2020, Preliminary Draft engagement in Spring/Summer 2022
Field availability & utilization (Priority Action 4, Action Step 1.2.5., page 60)	Virtual engagement held in early 2021, next engagement opportunity in Spring/Summer 2022
Update the County's zoning regulations as they relate to parks and public spaces (Action Step 1.5.10., page 68)	Initial discussion with the PSMP-IAC June 14, 2021
Review options and identify a preferred formal process for adding lights to athletic fields (Action Step 1.5.5., page 67)	TBD

# COUNTY BOARD GUIDANCE - PROGRESS

## PUBLIC SPACES MASTER PLAN-IMPLEMENTATION ADVISORY COMMITTEE (PSMP-IAC)

### Progress:

- The PSMP-IAC was appointed by the County Manager in Fall 2019
- 12 meetings held so far

### Membership:

- Co-Chairs:
  - Shruti Kuppa, Park and Recreation Commission
  - Jane Rudolph, Department of Parks and Recreation
- Arlington Public Schools: Bill Gillen
- Bicycle Advisory Committee: Gillian Burgess
- Climate Change, Energy and Environment Commission (C2E2): Mikaila Milton
- Economic Development Commission: Daron Coates
- Fiscal Affairs Advisory Commission: Peter Robertson
- Forestry and Natural Resources Commission: Caroline Haynes
- Park and Recreation Commission: Sergio Enriquez
- Pedestrian Advisory Committee: Andrea Walker
- Planning Commission: Elizabeth Gearin
- Sports Commission: Nancy Sharkey
- Department of Parks and Recreation: Erik Beach

# COUNTY BOARD GUIDANCE - PROGRESS

## FIELD AVAILABILITY & UTILIZATION

### PSMP Recommendation:

#### Priority Action 4

1.2.5. Analyze athletic field utilization to improve data on the current use and assess future athletic field needs.

The County will work with the community to determine a set of use assumptions that will enable consistent evaluation of field utilization and capacity. This will be used in conjunction with the Level of Service recommendations (see 1.2.4.).

### Progress:

- 4 meetings with the PSMP-IAC
- Online engagement conducted in early 2021, with input from 107 participants
- Presented the draft framework of [Athletic Field Availability and Utilization](#) to PSMP-IAC on October 18th, 2021.

### Next Steps:

- Public Engagement #2 in Spring/Summer 2022





# COUNTY BOARD GUIDANCE - PROGRESS

## CASUAL USE SPACES

Priority Action 5: 1.3. Ensure access to spaces that are intentionally designed to support casual, impromptu use and connection with nature.

1.3.1. Undertake an **inventory** of casual use spaces to better understand their distribution and gaps.

Casual use space is a new concept, and as such, has not been inventoried. Further refining this concept should enable an inventory to be completed.

1.3.2. Explore opportunities to develop **standards** for casual use spaces.

As this concept is new and there is no inventory or benchmarking data available, the County should explore ways to develop standards for casual use spaces.

1.3.3. When developing plans for public spaces, **include** intentionally designed casual use spaces where appropriate.



### Progress:

- Worked with the PSMP-IAC to inventory casual use spaces & discuss the concept/definition revisions
- Incorporated casual use space concept in various park master plans and site plans

### Next Steps:

- Potentially refining the concept & exploring standards (Summer/Fall 2022)
- Finalizing Inventory (Fall 2022/Winter 2023)

# COUNTY BOARD GUIDANCE - PROGRESS

## FORESTRY AND NATURAL RESOURCES PLAN

### PSMP Recommendation:

#### Priority Action 10

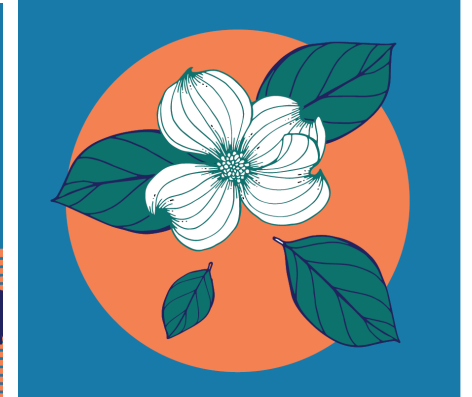
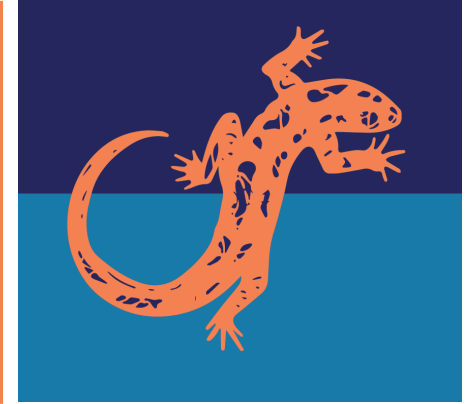
3.1. Update the Urban Forest Master Plan and the Natural Resources Management Plan through a combined process.

### Progress:

- Staff & consultants working on the preliminary draft
- Regular check-ins with NRJAG

### Next Steps:

- Public engagement on the draft (Spring/Summer 2022)
- Anticipated adoption (Winter 2022/2023)





# COUNTY BOARD GUIDANCE - PROGRESS

## ZONING ORDINANCE STUDY

### PSMP Recommendation:

1.5.10. Review and consider updating the County's zoning regulations related to parks and public spaces in "S-3A" and "PS" districts, and other County codes as needed, related to setbacks, athletic field and other lighting, parking and parking options, dog parks and dog runs, signage, height, water features, fencing and temporary use of public and private property as public space.

### Progress:

- Continued coordination with CPHD and DES on overlapping objectives
- Inclusion of potential "Next Up" zoning studies in FY23 Planning Division Work Plan, including Phased Public Facility/Infrastructure-related Zoning Studies:
  - Public Spaces Master Plan Implementation (Phased, Multi-year, Multiple Topics)
  - Stormwater Management
  - Public District Review and Modernization (may include review of Allowable Uses, Standards, Approval Mechanisms for S-3A and P-S Districts)

### Next Steps:

- Complete current projects
- Determine Next Up zoning study and prepare scopes and timelines for individual study phases when interdepartmental staffing resources are available
- Develop and commence community engagement for desired zoning changes

2021

## Zoning Ordinance

Arlington County, Virginia





# COUNTY BOARD GUIDANCE - PROGRESS

## FIELD LIGHTING PROCESS

### PSMP Recommendation:

Action Step 1.5.5.: Define a transparent civic engagement process for adding lights to athletic fields.

### Progress:

- N/A

### Next Steps:

- Contingent upon the Zoning Study







**SELECTED PSMP  
RECOMMENDATIONS  
PROGRESS**

# PSMP CONTAINS 200+ RECOMMENDATIONS

## Progress:

- Tracking of progress & responsibilities
- PSMP-IAC regular meetings

## Next Steps:

- Continuing collaboration with other County departments & APS on implementation & regular updates to the PSMP-IAC

**Strategic Direction 1. Ensure equitable access for recreation, play and enjoying nature by adding and improving public spaces.**

**Action 1.1. Add at least 30 acres of new public space over the next 10 years.**

Responsible Parties	Potential Partners	Potential Funding Sources	Time Frame	Cost Range Est.
1.1.1. DPR	Acquire land strategically according to acquisition guidelines and parcels identified in this plan (see Appendix II, Land Acquisition). Private funding	Capital budget, grants	continuous	\$\$\$
1.1.2. DPR, CPHD, AED	Secure or expand the public spaces envisioned by sector, corridor and other plans adopted by the County Board – including the Clarendon Sector Plan, Virginia Square Plan, Courthouse Sector Plan, Rosslyn Sector Plan, Crystal City Sector Plan and Columbia Pike Form Based Codes – and ensure they provide amenities that meet County needs. PRC, SC, UFC, PC, BIDs, community organizations, private funding	Capital budget, private funding	continuous	\$\$\$
1.1.3. CPHD, DPR, DES, AED	Incorporate the recommendations of this PSMP into future sector, corridor and other County plans, and use County-wide needs and level of service analyses to guide the inclusion of additional public space in those plans. PRC, SC, PC, HALRB, BIDs, community organizations, property owners	Operating budget	continuous	\$
1.1.4. DPR, CPHD, DES	Ensure that privately owned public spaces conditioned in Board adopted plans, like site plans, are informed by this plan's level of service analyses and guided by the Privately Owned Public Space Design Guidelines (see Appendix III, Design Guidelines). As developer projects are completed, the County will ensure that the required public access easement is planned, recorded and enforced. Property owners, AED	Operating budget	continuous	\$
1.1.5. DPR, DES	Continue to acquire ownership or easements from willing sellers for land adjacent to County waterways, particularly Four Mile Run. NVCT, property owners	Capital budget, operating budget, grants	continuous	\$\$\$
1.1.6. CPHD, DPR, CAO, AED	Explore strengthening and expanding the use of the County's Transfer of Development Rights policy as a tool to create and consolidate future public space. PRC, PC, property owners	Operating budget	short term (0–5 years)	\$
1.1.7. DPR, DES, CPHD	Work with the Commonwealth of Virginia and County-owned street system network to explore opportunities to create new deck parks over I-66 or other highways and primary streets to mitigate highway widening or reclaim public space. VDOT	Capital budget, state and federal funding	continuous	\$\$\$
1.1.8. DPR, DES, CPHD	Conduct a study of residual rights-of-way to determine if such spaces could be used for public space purposes on a temporary or permanent basis. VDOT	Operating budget	short term (0–5 years)	\$

**Action 1.2. Utilize level of service as a planning tool to manage public space assets efficiently.**

Responsible Parties	Potential Partners	Potential Funding Sources	Time Frame	Cost Range Est.
1.2.1. DPR, DES	Identify opportunities to add or change park and recreation amenities or enhance multi-modal access based on Level of Service Analysis. CPHD, citizen associations	Capital budget	continuous	\$
1.2.2. DPR	Based on level of service and other planning tools and policy, determine where to reduce duplication of services without reducing the overall quality of service provided to the community. Capital budget	Capital budget	continuous	\$

# NEW PUBLIC SPACES

## PSMP Recommendations:

- Priority Action 1: 1.1. Add at least 30 acres of new public space over the next 10 years.
- Priority Action 2: 1.1.2. Secure or expand the public spaces envisioned by sector, corridor and other plans adopted by the County Board – including the Clarendon Sector Plan, Virginia Square Plan, Courthouse Sector Plan, Rosslyn Sector Plan, Crystal City Sector Plan and Columbia Pike Form Based Codes – and ensure they provide amenities that meet County needs.

## Progress (land secured):

Park/Public Space	Approximate Acreage Added	Type of acquisition
Short Bridge Park	2.32	Conveyance (public access easement converted to County ownership)
Short Bridge Park	0.30	New public access easement recorded
	<b>Total: 0.30 acres of new public space</b>	

## Site plans w/public spaces approved since Spring 2021 (various construction & easement timelines):

Future privately owned public space	Estimated Acres	SP Approved by the County Board
Crystal Plaza 1 – SP #454	0.16	May 2021
Potomac Yard Landbay C – SP & PDSP #434	0.62	June 2021
Wendy’s Site – SP #435	0.03	March 2022
	<b>Total: 0.81</b>	

## Anticipated site plans to be considered by the County Board in near future:

Associated Site Plan (SP)	Estimated Acres
PenPlace – April 2022	2.5
Crystal Plaza 5 – Fall 2022	0.27 (2 new public spaces)
	<b>Total: 2.77</b>



# PSMP & OTHER COUNTY PLANS

## PSMP Recommendations:

- 1.1.3. Incorporate the recommendations of this PSMP into future sector, corridor and other County plans, and use County-wide needs and Level of Service analyses to guide the inclusion of additional public space in those plans.

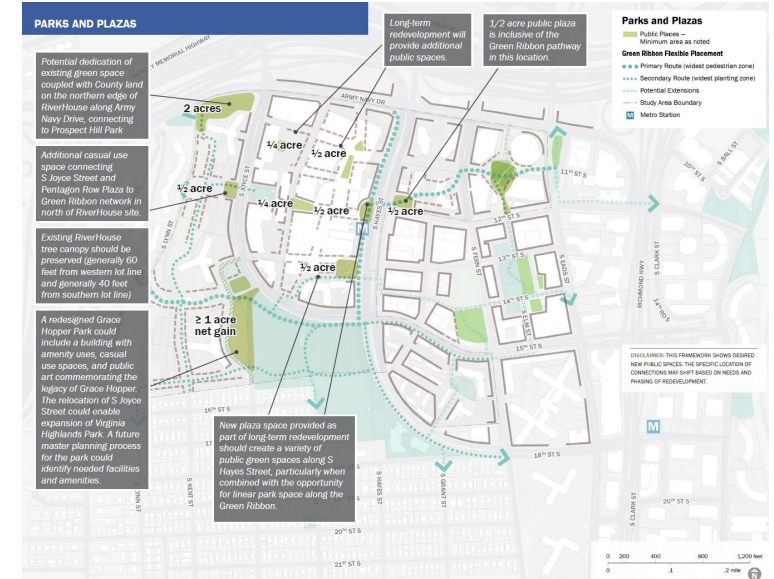
## Progress:

- Pentagon City Sector Plan was adopted in February 2022.
- It includes recommendations on biophilic design, aggressive goals for urban forest canopy and other plantings, and increase of at least 5 acres of public space, and the development of the Green Ribbon connecting public spaces throughout Pentagon City.

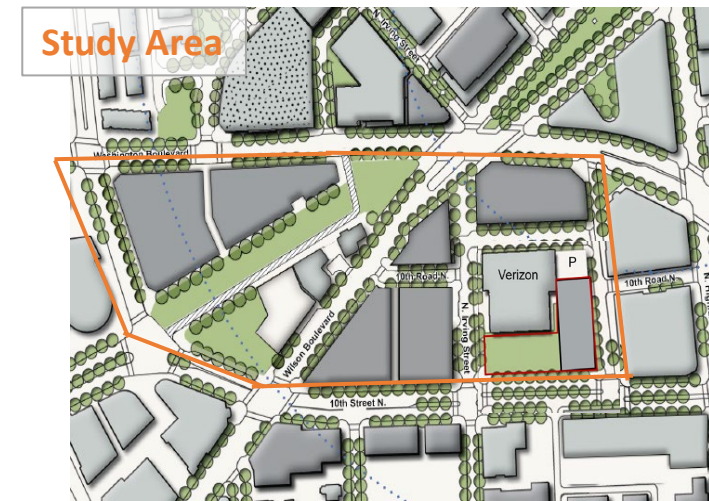
## Next Steps:

- Clarendon Sector Plan Update- anticipated adoption in Spring 2022, includes recommendations for new public spaces and biophilic design informed by the PSMP.
- Plan Langston Boulevard - anticipated adoption in 2022

## 2022 Pentagon City Sector Plan Parks and Plazas



## Clarendon Sector Plan Update Draft 2022 – Public Spaces



# ADOPTED PARK MASTER PLANS IMPLEMENTATION

## PSMP Recommendations:

- Priority Action 6: 1.5.2. Complete the implementation of adopted park master plans.

## Progress:

- Long Bridge Park Aquatic Center opened in Summer 2021
- Lubber Run Community Center opened in Summer 2021
- Rosslyn Highlands Park (RHP+) Phase 1 opened in Winter 2022

## Next Steps:

- Jennie Dean Park Phase 1 anticipated opening in Spring 2022
- New Park at South Eads Street and Army Navy Drive - in design phase, online engagement in March 2022; anticipated construction start in 1<sup>st</sup> Quarter 2023



Rosslyn Highlands Park



Long Bridge Aquatic Center



# NEW PARK MASTER PLANS

## PSMP Recommendation:

Priority Action 7: 1.5.9. Develop park master plans for all new parks or when renovation of an existing park requires a major rearrangement of park amenities.

## Progress:

- New Park at South Eads Street and Army Navy Drive – park master plan & design guidelines approved in June 2021.

## Next Steps:

- PenPlace Park Master Plan anticipated adoption in April 2022



New Park at S. Eads

Arlington, VA

February 2021

# PICKLEBALL

## PSMP Recommendation:

- 1.4.3. Establish a dedicated pickleball facility to meet the growing demand.

## Progress:

- Conducted 1<sup>st</sup> engagement on outdoor court needs in Fall 2021

## Next Steps:

- 2<sup>nd</sup> engagement focused on pickleball in Spring 2022



Lubber Run Park



# NATURAL SURFACE TRAILS

## PSMP Recommendations:

- 2.1.7. Explore opportunities to provide a space for pump tracks and cyclocross on a temporary or permanent basis, while balancing potential impacts on natural resources and trees.
- 2.4. Provide or make better connections to hiking trails.

## Progress:

- Contractor-led inventory and assessment of existing natural surface trails has been initiated and is expected to conclude in Spring 2022. This data will be used to support the planning effort.

## Next Steps:

- Public engagement is anticipated to begin in late Summer 2022.



Natural Surface Trail at Douglas Park



# LONG BRIDGE CONNECTION

## PSMP Recommendations:

- 2.1.4. Connect Long Bridge Park to the District of Columbia via the Mount Vernon Trail and Long Bridge Esplanade.

## Progress:

- Conceptual planning is underway for the Long Bridge Pedestrian Trail renovation project led by VPRA and DRPT.
- The Long Bridge Project will construct a new, two-track railroad bridge next to the existing Long Bridge, creating a four-track corridor between Long Bridge and L'Enfant.
- New bike-pedestrian bridge also will be constructed with a connection to the Mount Vernon Trail and will span the Potomac River and George Washington Memorial Parkway, connecting Long Bridge Park directly to East and West Potomac Parks.

## Next Steps:

- VRPA, DDOT and VHB are working on 30% design plans
- County Staff is working with DDOT, VPRA, and VHB regarding the proposed pedestrian bridge connection at Long Bridge Park.
- Further coordination is anticipated between Arlington County and partners regarding easements and agreements.



# BIOPHILIC CITIES NETWORK

## PSMP Recommendation:

3.3.1. Explore opportunities to participate in and join the Biophilic Cities movement.

## Progress:

- An interdepartmental core team tracks progress of implementation
- CPHD & DPR staff participate in monthly meetings of the Biophilic Cities Network
- Incorporated biophilic design recommendations in park master plan, site plans and other plans
- Staff workshop held in Summer 2021

## Next Steps:

- Explore opportunities for broader public workshop
- Continue to encourage biophilic design principles in county & private projects and plans
- Track implementation/progress

## PENTAGON CITY DEVELOPMENT FRAMEWORK

DRAFT

public space

Terrapin Bright Green's "14 Patterns of Biophilic Design" offers a series of tools for understanding biophilic design opportunities and potential strategies for seizing those opportunities without identifying prescriptive design solutions. The patterns are organized into three categories:

### NATURE IN THE SPACE

*the direct integration and experience of nature in a space*

visual + non-visual connection with nature  
• non-rhythmic stimuli • thermal + airflow variability • presence of water • dynamic + diffuse light • connection with natural systems



IMAGE CREDIT: Future Green Studio, 41 Bond

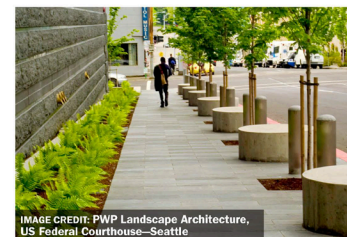


IMAGE CREDIT: PWP Landscape Architecture, US Federal Courthouse—Seattle

### NATURAL ANALOGUES

*design that indirectly mimics or evokes nature*

biomorphic forms + patterns • material connection with nature • complexity + order

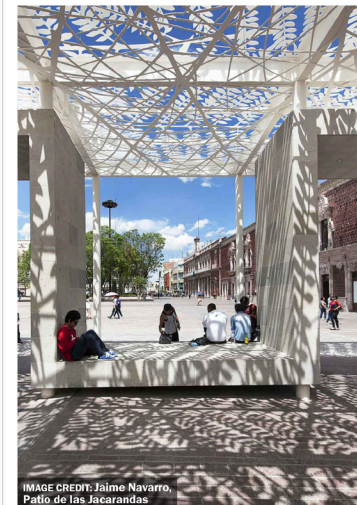


IMAGE CREDIT: Jaime Navarro, Patio de las Jacarandas

### NATURE OF THE SPACE

*spatial configurations that create interest as they are experienced*

prospect • refuge • mystery • risk/peril



IMAGE CREDIT: OLIN, Long Bridge Park

Biophilic design recommendations included in the Pentagon City Sector Plan



# PROGRAMMING IN PARKS

## PSMP Recommendations:

- 3.4.1. Enhance and expand nature-based interpretive and educational opportunities for children, starting at pre-school age, as well as adults and seniors.

## Progress:

- Offered nature-based programs such as Civil War & nature Storytime
- Expanded 55+ Programs with nature centers to include walks and virtual programs
- Community Arts conducted painting projects in the park and installed interactive art panels "Find Your heART" at Four Mile Run trail

## Next Steps:

- Collaboration with CA & Nature Centers with a series of workshops combining Art & Nature for Fall 2022





# PROGRAMMING

## PSMP Recommendations:

- 5.1.4. Promote and increase the availability of programming that caters to diverse ages, interests and abilities.
- 5.1.5 Increase drop-in opportunities to allow more flexibility for residents and improve program participation

## Progress:

- Continued virtual programs which have provided a valuable alternative to in-person programs due to inclement weather, COVID closures, and general ease of access to meet the needs of diverse ages, interests, and abilities.
- Therapeutic Recreation has incorporated the use of Computer Assisted Real-Time Transcription (CART) to provide services to individuals with hearing impairments.
- Offered free outdoor programs in the park in strategically-placed locations throughout the County.
- 60+ Social Cafe meal delivery increased availability of meals, leisure activities and brain health exercises during the pandemic and made meals accessible after programs returned in person.
- Drop-in programs have returned (example the 55+ Drop-in fitness classes have resumed at Lubber Run & selected Drop-in Teen programs). Provided some drop-in virtual opportunities through pre-recorded programs.



# NEXT STEPS

- **2022 Topics:**
  - FNRP
  - casual use spaces
  - zoning study
  - field availability & utilization
  - natural surface trails
  - pickleball
  - Biophilia
  - park master plan implementation
  - urban parks lighting pilot
  - alcohol in parks policy
- **PSMP-IAC Meetings quarterly**
- **Next Meeting - late June/early July**
- **Date scheduled through Doodle poll & posted online**



**PUBLIC SPACES MASTER PLAN-  
IMPLEMENTATION ADVISORY COMMITTEE (PSMP-IAC)**

**Virtual Meeting**

**March 31, 2022**