

Bioretention / Microbioretention Photo Requirements for Certification:

- Excavated area prior to installation of stone, filter fabric on sides
- Clear photo measurements of facility length, width and overall depth.
- Photo of perforated underdrain pipe (3/8" perforations spaced 6" on center), if req'd.
- Photo of solid vertical overflow pipe.
- Clear photo measurement of #57 stone depth.
- Clear photo measurement of choker stone depth.
- Clear photo measurement of soil media depth (MUST be from approved vendor).
- Clear photo measurement of mulch depth.
- Clear photo measurement of ponding depth, from top of mulch to crest of overflow pipe, weir, or berm.
- Clear photo measurement of freeboard, from crest of overflow to top of berm/wall.
- Photo of overall completed bioretention/microbioretention facility that shows the number of plants installed.
- Photos of all required pretreatment measures.
- Photos of all inflows (pipes with appropriate splash rocks, swales, sheetflow, etc). For sheetflow entering facility, submit grading survey or string-line measurements to show sheetflow enters facility.
- Photo showing underdrain connection to storm sewer (if required).

***Remember: Planter box construction must follow the approved plan.**

Provide receipts for materials used, including (but not limited to):

- Filter Fabric
- #57 stone
- Choker stone
- Soil media (showing media is from an approved vendor)
- Mulch
- Plants



**ARLINGTON
VIRGINIA**

Reminders and Tips

- **Do not build facility until entire contributing drainage area is stabilized.**
- **Approved soil media vendors:** <https://building.arlingtonva.us/codes-ordinances/stormwater-management/notices-to-industry/>, Bioretention
- **During installation, gently water down the soil media between lifts.**
- **The mulch layer must be installed completely flat.**

As-Built Submittal Procedures will be discussed at SWMF Preinstallation Meeting

Photos submitted to Arlington County become the property of Arlington County.

Bioretention / Microbioretention Requirements



**ARLINGTON
VIRGINIA**

Stormwater Management Facility
Construction Certification Requirements Guidelines



Photo of excavated area



Photo of overall depth



Clear photo of #57 stone depth



Clear photo of choker stone depth



Photo of completed facility showing all plants installed



Photo of overall length and width



Clear photo soil media depth



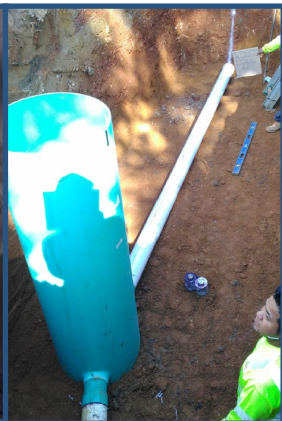
Clear photo of mulch depth



Photos of all inflow to facility (pipe, swale, sheetflow, etc)



Overflow pipe and perforated underdrain



Clear photos of ponding depth and freeboard



Photo of all required pretreatment measures

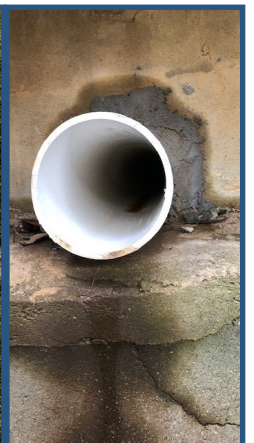


Photo of underdrain discharge location