

### PARKING

LEVEL	STANDARD	COMPACT	VAN	HC	TOTAL
LEVEL P2	21	10	0	1	38
LEVEL P1	20	6	0	0	27
LEVEL 1	0	0	0	0	0
<b>TOTAL</b>	<b>41</b>	<b>16</b>	<b>0</b>	<b>1</b>	<b>66</b>

### GROSS SQUARE FOOTAGES

LEVEL P2	11,199 SF
LEVEL P1	11,199 SF
LEVEL 1	15,849 SF (AREA UNDER SECOND FLOOR SLAB)
LEVEL 2	15,849 SF
LEVEL 3	4,095 SF
LEVEL 4	4,095 SF
LEVEL 5	4,095 SF
LEVEL 6	4,095 SF
LEVEL 7	4,095 SF
<b>TOTAL</b>	<b>131,711 SF</b>

### UNIT MIX

UNIT	BR	BA	SF	1	2	3	4	5	6	7	TOTAL
A	1	1	741		X	X	X	X	X	X	6
B	1	1	759		X						6
C	2	2	1168		X						6
D	2	2	1121		X						6
E	2	2	1331		X						6
F	1	1	824		X						6
G	1	1	824		X						6
H	2	2	1168		X						6
I	2	2	914		X						6
J	1	1	732		X						6
K	1	1	763		X						6
L	1	1	701		X						6
M	1	1	585		X	X	X	X	X	X	6
N	1	1	689		X	X	X	X	X	X	6
O	2	2	1071		X	X	X	X	X	X	6
P	2	2	876		X	X	X	X	X	X	6
Q	1	1	571		X	X	X	X	X	X	6
R	1	1	737		X	X	X	X	X	X	6
S	1	1	602		X	X	X	X	X	X	6
T	1	1	737		X	X	X	X	X	X	6
U	2	2	1042		X	X	X	X	X	X	6
V	2	2	1078		X	X	X	X	X	X	6
W	1	1	850		X	X	X	X	X	X	6
X	1	1	888		X	X	X	X	X	X	6
Y	1	1	627		X	X	X	X	X	X	6
Z	1	1	601		X	X	X	X	X	X	6
<b>TOTAL</b>				<b>0</b>	<b>13</b>	<b>15</b>	<b>15</b>	<b>15</b>	<b>15</b>	<b>15</b>	<b>88</b>

### CODE

2018 VIRGINIA CONSTRUCTION CODE  
 2018 VIRGINIA FIRE PREVENTION CODE  
 2018 VIRGINIA ENERGY CODE  
 2018 VIRGINIA FUEL GAS CODE  
 2018 VIRGINIA MECHANICAL CODE  
 2018 VIRGINIA PLUMBING CODE  
 2018 INTERNATIONAL FIRE CODE

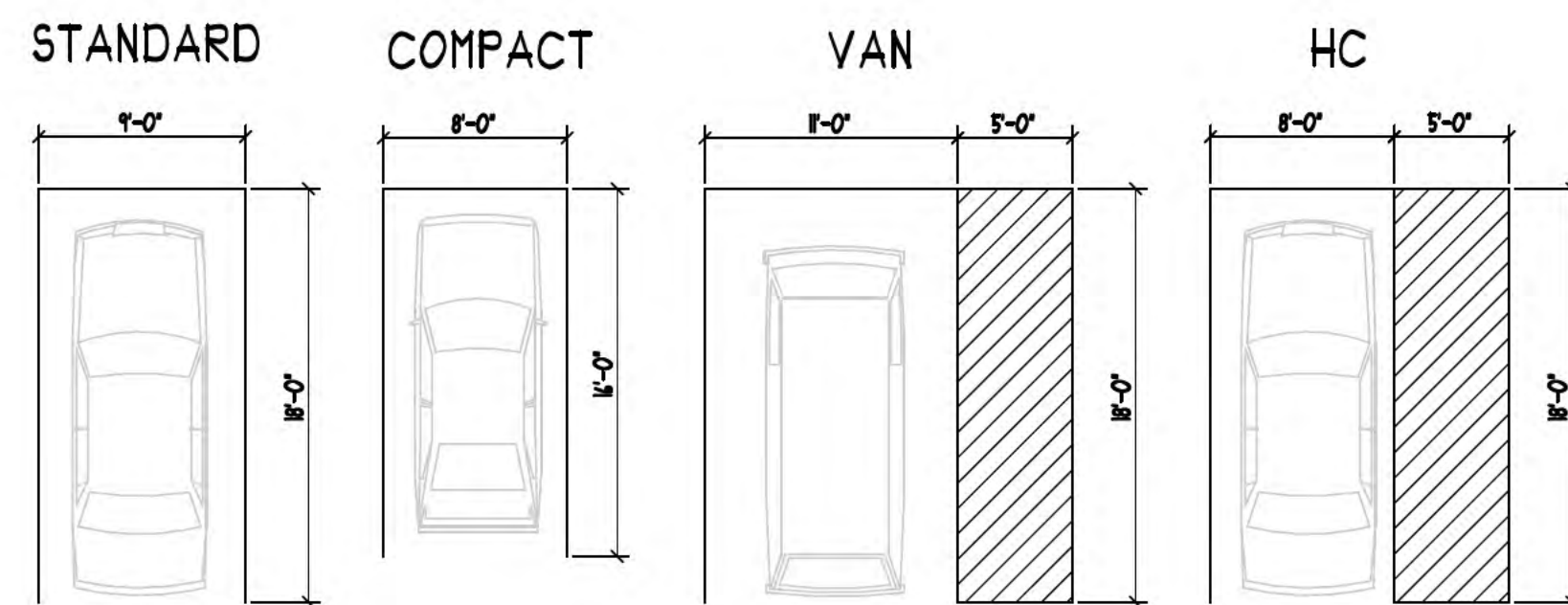
### USE GROUP

S2: PARKING GARAGE  
 R2: RESIDENTIAL  
 A: ASSEMBLY  
 M: MERCANTILE

### CONSTRUCTION TYPE

GARAGE LEVELS P1 AND P2: IA  
 LEVEL 1 AMENITY AND RETAIL: IA  
 LEVEL 2 RESIDENTIAL: IA  
 LEVELS 3 TO 7 RESIDENTIAL: IIIA

DRAWING INDEX	
SHEET NO.	SHEET NAME
A.000	COVER SHEET   TABULATIONS
A1.00	LEVEL P2 - PARKING GARAGE
A1.01	LEVEL P1 - PARKING GARAGE
A1.10	LEVEL 1 - FIRST FLOOR PLAN
A1.20	LEVEL 2 - SECOND FLOOR PLAN
A1.30	LEVEL 3 TO 7 - TYPICAL FLOOR PLANS
A1.80	ROOF PLAN
A2.00	NORTHEAST ELEVATION
A2.10	NORTHWEST ELEVATION
A2.20	SOUTHEAST ELEVATION
A2.30	SOUTHWEST ELEVATION
A2.40	COURTYARD ELEVATIONS
A3.00	SECTION A
A3.01	SECTION B
A4.00	MASSING STUDIES



### AREA CALCULATIONS

LEVEL 1:	
NET RETAIL:	5,619 SF
NET AMENITY:	4,689 SF



ARCHITECTS  
 &  
 PLANNERS

1111 CHAIN BRIDGE ROAD • #200 McLEAN, VIRGINIA 22101 • 703.893.0102 • FAX 703.893.0104  
 WWW.DEVEREAUXARCH.COM

© DEVEREAUX ASSOCIATES EXPRESSLY RESERVES ITS COMMON LAW COPYRIGHT AND OTHER PROPERTY RIGHTS IN THESE PLANS. THESE PLANS ARE NOT TO BE REPRODUCED, CHANGED, OR COPIED IN ANY FORM OR MANNER WHATSOEVER, NOR ARE THEY TO BE ASSIGNED TO ANY THIRD PARTY WITHOUT FIRST OBTAINING THE EXPRESS WRITTEN PERMISSION AND CONSENT OF DEVEREAUX ASSOCIATES, P.C.

## COVER SHEET & TABULATIONS

SCHEMATIC DESIGN  
 FBC SUBMITTAL

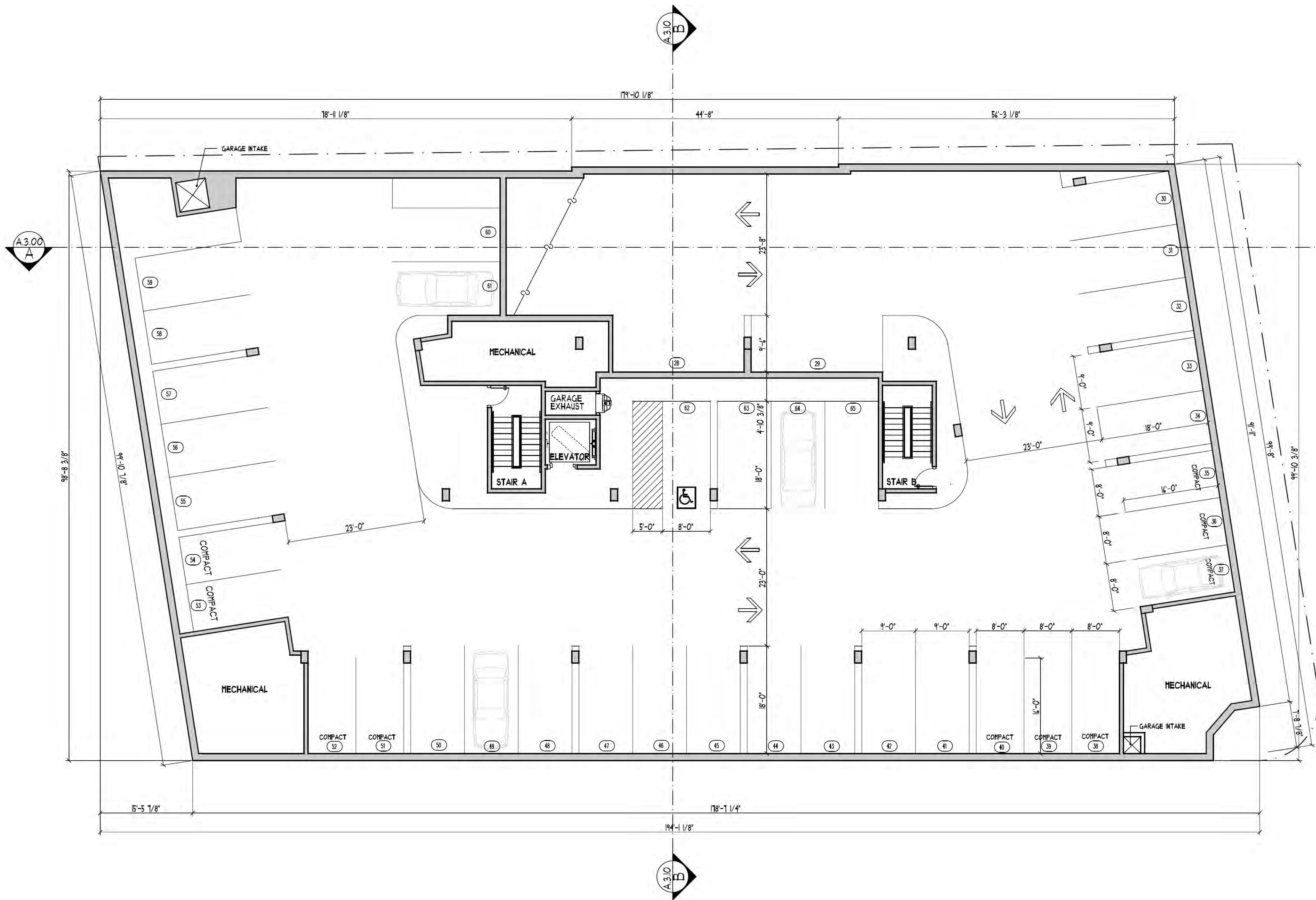
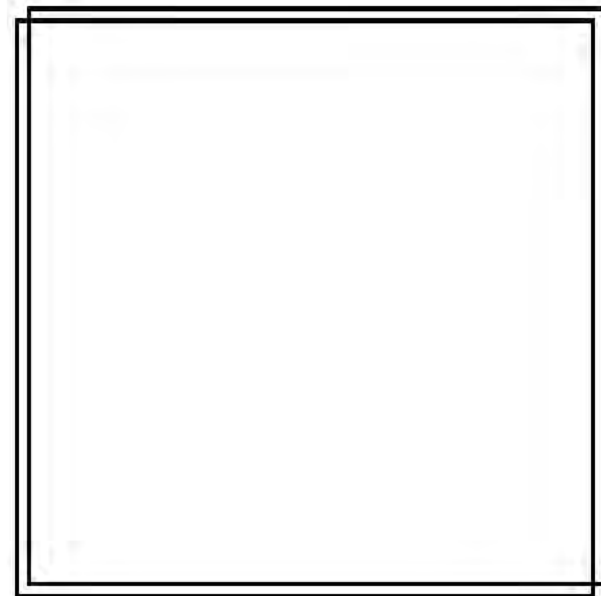
SUBJECT TO CHANGE DURING WORKING DRAWINGS

2801 COLUMBIA PIKE  
 THE CHRISTOPHER COMPANIES  
 ARLINGTON, VIRGINIA



DATE:	SHEET NO.:
09.15.2022 FBC SUBMITTAL 01	A.000
11.23.2022 SUBMITTAL 02	





PARKING TABULATION	
COMPACT 8'X11'	10
STANDARD 9'X18'	21
HANDICAP 8'X18'	1
<b>TOTAL</b>	<b>38</b>

GFA TOTAL	
LEVEL P2	17,488 SQ. FT.



ARCHITECTS  
&  
PLANNERS

1471 CHAIN BRIDGE ROAD • #200 McLEAN, VIRGINIA 22101 • 703.893.0102 • FAX 703.893.0104  
WWW.DEVEREAUXARCH.COM

© DEVEREAUX ASSOCIATES EXPRESSLY RESERVES ITS COMMON LAW COPYRIGHT AND OTHER PROPERTY RIGHTS IN THESE PLANS. THESE PLANS ARE NOT TO BE REPRODUCED, CHANGED, OR COPIED IN ANY FORM OR MANNER WHATSOEVER, NOR ARE THEY TO BE ASSIGNED TO ANY THIRD PARTY WITHOUT FIRST OBTAINING THE EXPRESS WRITTEN PERMISSION AND CONSENT OF DEVEREAUX ASSOCIATES, P.C.

**LEVEL P2**  
SCHEMATIC DESIGN  
FBC SUBMITTAL  
SUBJECT TO CHANGE DURING WORKING DRAWINGS

**2801 COLUMBIA PIKE**  
THE CHRISTOPHER COMPANIES  
ARLINGTON, VIRGINIA

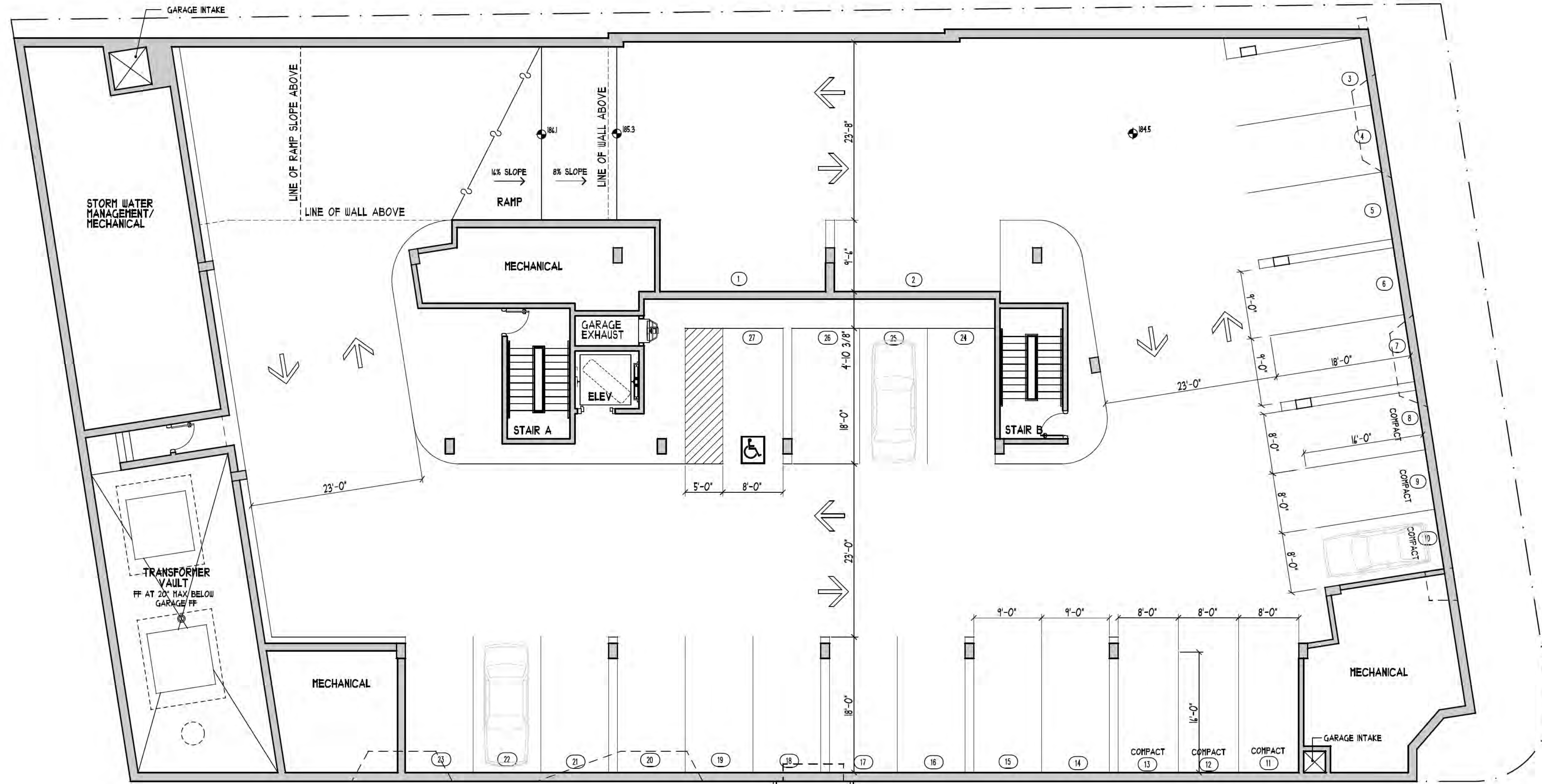
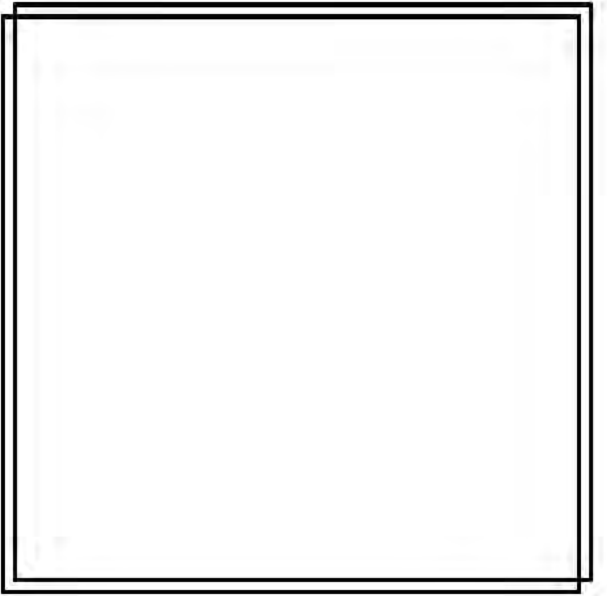


DATE:  
03.15.2022 FBC SUBMITTAL 01  
11.23.2022 SUBMITTAL 02

SHEET NO:  
**A.1.00**

SCALE: 1/8" = 1'-0"

NORTH



ARCHITECTS  
&  
PLANNERS

1471 CHAIN BRIDGE ROAD • #200 McLEAN, VIRGINIA 22101 • 703.893.0102 • FAX 703.893.0104  
WWW.DEVEREAUXARCH.COM

© DEVEREAUX & ASSOCIATES EXPRESSLY RESERVES ITS COMMON LAW COPYRIGHT AND OTHER PROPERTY RIGHTS IN THESE PLANS. THESE PLANS ARE NOT TO BE REPRODUCED, CHANGED, OR COPIED IN ANY FORM OR MANNER WHATSOEVER, NOR ARE THEY TO BE ASSIGNED TO ANY THIRD PARTY WITHOUT FIRST OBTAINING THE EXPRESS WRITTEN PERMISSION AND CONSENT OF DEVEREAUX & ASSOCIATES, P.C.

# LEVEL P1

SCHEMATIC DESIGN  
FBC SUBMITTAL

SUBJECT TO CHANGE DURING WORKING DRAWINGS

2801 COLUMBIA PIKE  
THE CHRISTOPHER COMPANIES  
ARLINGTON, VIRGINIA

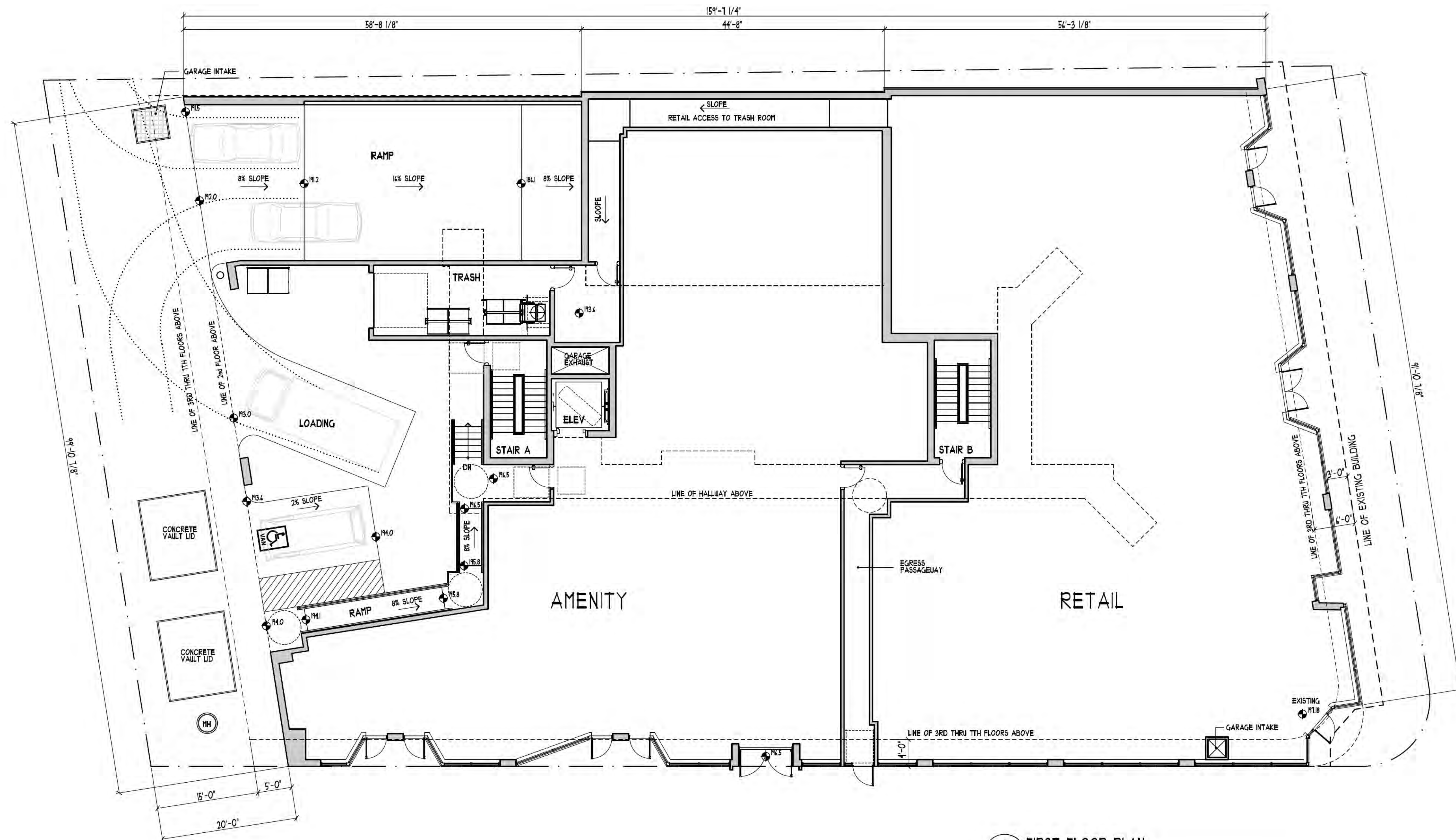
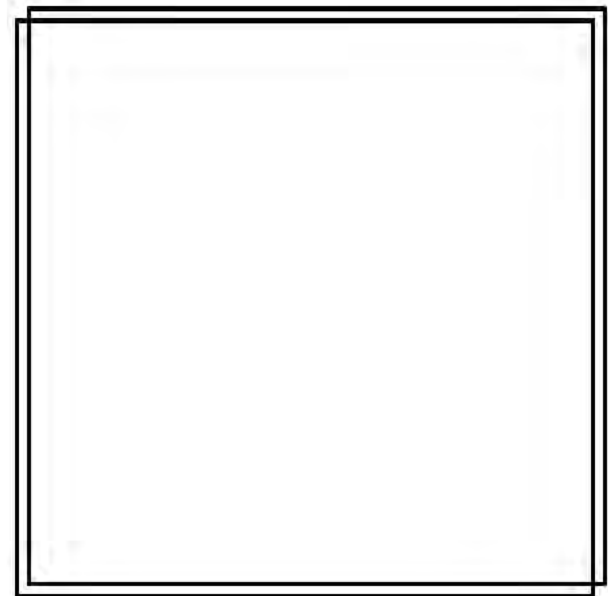


DATE:  
03.15.2022 FBC SUBMITTAL 01  
11.23.2022 SUBMITTAL 02

SHEET NO:

## A.1.01

SCALE: 1/8" = 1'-0"  
0 5 10 20 NORTH



1 FIRST FLOOR PLAN  
A1.10 1/8" = 1'-0"



ARCHITECTS  
&  
PLANNERS

1471 CHAIN BRIDGE ROAD • #200 McLEAN, VIRGINIA 22101 • 703.893.0102 • FAX 703.893.0104  
WWW.DEVEREAUXARCH.COM

© DEVEREAUX & ASSOCIATES EXPRESSLY RESERVES ITS COMMON LAW COPYRIGHT AND OTHER PROPERTY RIGHTS IN THESE PLANS. THESE PLANS ARE NOT TO BE REPRODUCED, CHANGED, OR COPIED IN ANY FORM OR MANNER WHATSOEVER, NOR ARE THEY TO BE ASSIGNED TO ANY THIRD PARTY WITHOUT FIRST OBTAINING THE EXPRESS WRITTEN PERMISSION AND CONSENT OF DEVEREAUX & ASSOCIATES, P.C.

**LEVEL 1**  
**SCHEMATIC DESIGN**  
**FBC SUBMITTAL**  
SUBJECT TO CHANGE DURING WORKING DRAWINGS

**2801 COLUMBIA PIKE**  
**THE CHRISTOPHER COMPANIES**  
ARLINGTON, VIRGINIA



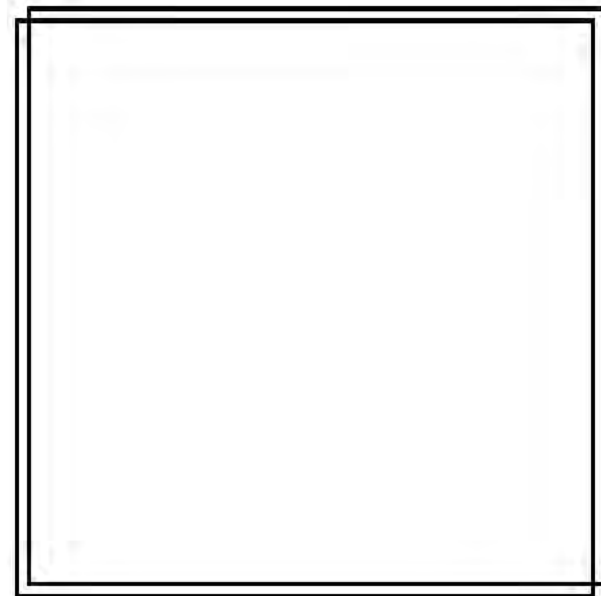
DATE:	SHEET NO.:
03.15.2022 FBC SUBMITTAL 01	
11.23.2022 SUBMITTAL 02	

**A.1.10**

SCALE: 1/8" = 1'-0"

0 5 10 20

NORTH



GFA TOTAL	
LEVEL 2	14,415 SQ. FT.

1 SECOND FLOOR PLAN  
A1.20 1/8" = 1'-0"



ARCHITECTS  
&  
PLANNERS

1471 CHAIN BRIDGE ROAD • #200 McLEAN, VIRGINIA 22101 • 703.893.0102 • FAX 703.893.0104  
WWW.DEVEREAUXARCH.COM

© DEVEREAUX ASSOCIATES EXPRESSLY RESERVES ITS COMMON LAW COPYRIGHT AND OTHER PROPERTY RIGHTS IN THESE PLANS. THESE PLANS ARE NOT TO BE REPRODUCED, CHANGED, OR COPIED IN ANY FORM OR MANNER WHATSOEVER NOR ARE THEY TO BE ASSIGNED TO ANY THIRD PARTY WITHOUT FIRST OBTAINING THE EXPRESS WRITTEN PERMISSION AND CONSENT OF DEVEREAUX ASSOCIATES, P.C.

# LEVEL 2

SCHEMATIC DESIGN  
FBC SUBMITTAL

SUBJECT TO CHANGE DURING WORKING DRAWINGS

2801 COLUMBIA PIKE  
THE CHRISTOPHER COMPANIES  
ARLINGTON, VIRGINIA

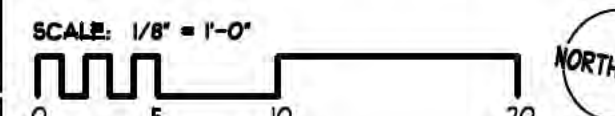


DATE:  
03.15.2022 FBC SUBMITTAL 01  
11.23.2022 SUBMITTAL 02

SHEET NO.:

## A.1.20

SCALE: 1/8" = 1'-0"





GFA TOTAL	
LEVEL 3	222'-3/4" 13,966 SQ. FT.
LEVEL 4	232'-0 5/8" 13,966 SQ. FT.
LEVEL 5	243'-8 1/2" 13,966 SQ. FT.
LEVEL 6	254'-4 3/8" 13,966 SQ. FT.
LEVEL 7	265'-1 1/4" 13,966 SQ. FT.

1 THIRD THRU SEVENTH FLOOR PLAN  
A.1.30 1/8" = 1'-0"

**DEV  
ERE  
AUX** ARCHITECTS & PLANNERS

1471 CHAIN BRIDGE ROAD • #200 McLEAN, VIRGINIA 22101 • 703.893.0102 • FAX 703.893.0104  
WWW.DEVEREAUXARCH.COM

© DEVEREAUX ASSOCIATES EXPRESSLY RESERVES ITS COMMON LAW COPYRIGHT AND OTHER PROPERTY RIGHTS IN THESE PLANS. THESE PLANS ARE NOT TO BE REPRODUCED, CHANGED, OR COPIED IN ANY FORM OR MANNER WHATSOEVER NOR ARE THEY TO BE ASSIGNED TO ANY THIRD PARTY WITHOUT FIRST OBTAINING THE EXPRESS WRITTEN PERMISSION AND CONSENT OF DEVEREAUX ASSOCIATES, P.C.

**LEVELS 3 TO 7**  
SCHEMATIC DESIGN  
FBC SUBMITTAL  
SUBJECT TO CHANGE DURING WORKING DRAWINGS

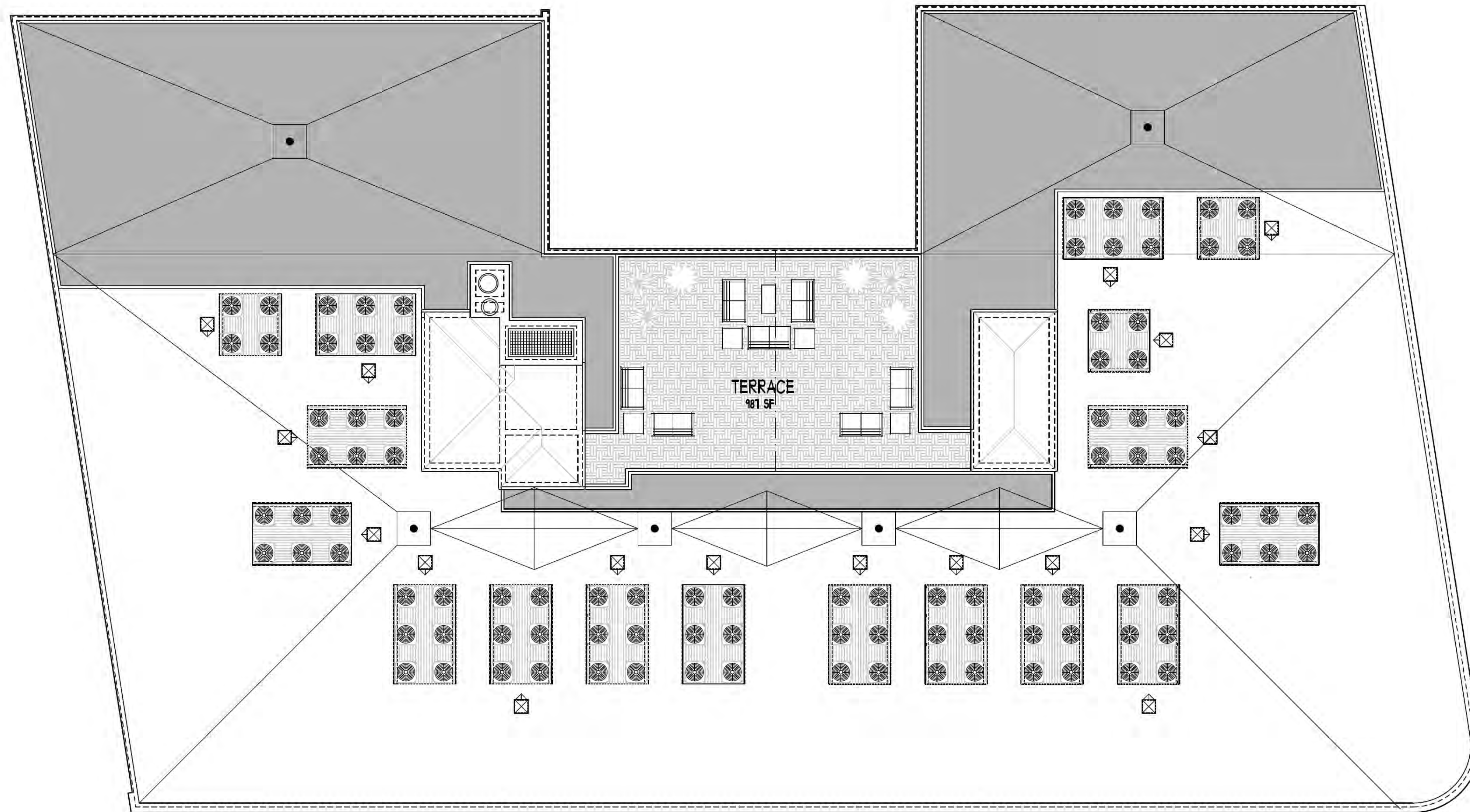
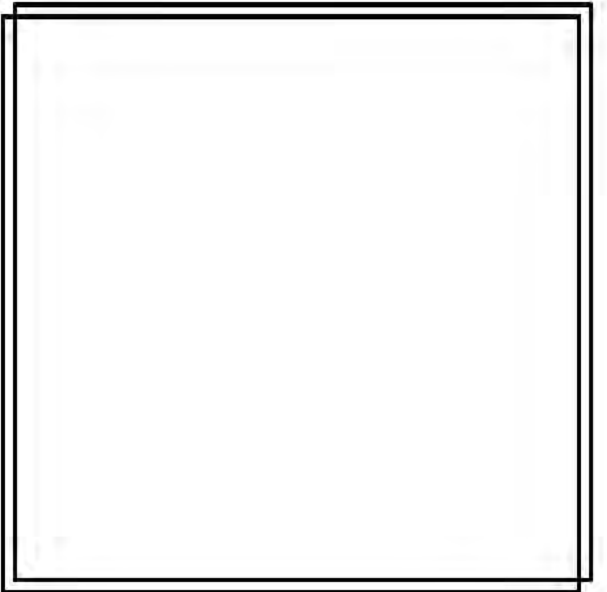
**2801 COLUMBIA PIKE**  
THE CHRISTOPHER COMPANIES  
ARLINGTON, VIRGINIA



DATE: 03.15.2022 FBC SUBMITTAL 01  
11.23.2022 SUBMITTAL 02

SHEET NO:  
**A.1.30**

SCALE: 1/8" = 1'-0"



ROOF AREA:	14,095 SF
25% GREEN ROOF PROVIDED:	3,524 SF
TERRACE:	981 SF



ARCHITECTS  
&  
PLANNERS

1471 CHAIN BRIDGE ROAD • #200 McLEAN, VIRGINIA 22101 • 703.813.0102 • FAX 703.813.0104  
WWW.DEVEREAUXARCH.COM

© DEVEREAUX I ASSOCIATES EXPRESSLY RESERVES ITS COMMON LAW COPYRIGHT AND OTHER PROPERTY RIGHTS IN THESE PLANS. THESE PLANS ARE NOT TO BE REPRODUCED, CHANGED, OR COPIED IN ANY FORM OR MANNER WHATSOEVER, NOR ARE THEY TO BE ASSIGNED TO ANY THIRD PARTY WITHOUT FIRST OBTAINING THE EXPRESS WRITTEN PERMISSION AND CONSENT OF DEVEREAUX I ASSOCIATES, P.C.

# ROOF PLAN

## SCHEMATIC DESIGN FBC SUBMITTAL

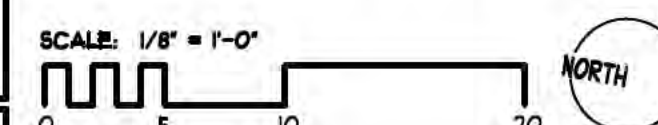
SUBJECT TO CHANGE DURING WORKING DRAWINGS

2801 COLUMBIA PIKE  
THE CHRISTOPHER COMPANIES  
ARLINGTON, VIRGINIA



DATE:	SHEET NO.:
03.15.2022 FBC SUBMITTAL 01	
11.23.2022 SUBMITTAL 02	

# A.1.80



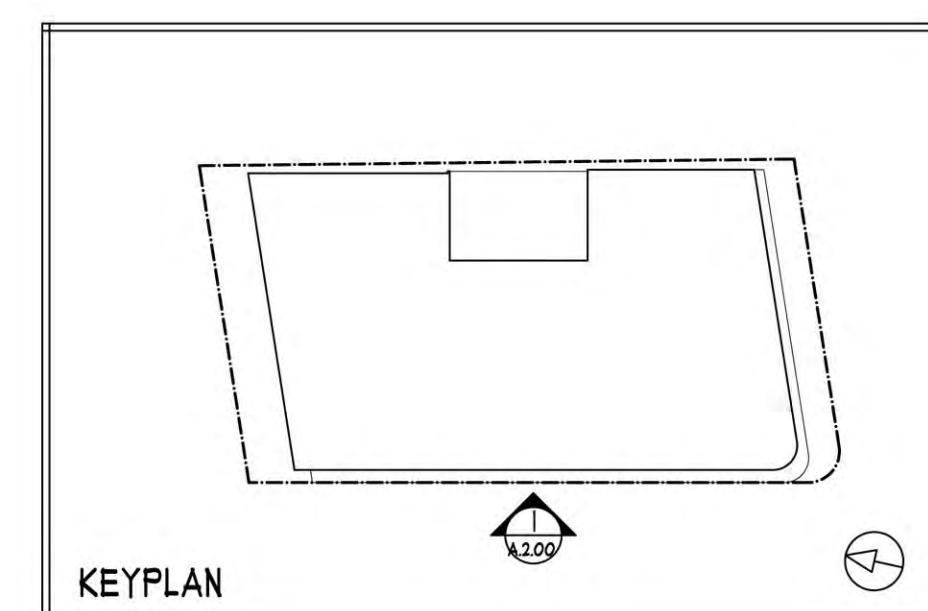
**MATERIAL LIST**

- |   |                               |                          |
|---|-------------------------------|--------------------------|
| 1 PRECAST TYPE 1 (SEE NOTE 1 BELOW)         | 8 FIBER CEMENT PANEL TYPE 1   | 14 ALUMINIUM RAIL        |
| 2 PRECAST BANDING TYPE 1 (SEE NOTE 1 BELOW) | 9 FIBER CEMENT SIDING TYPE 1  | 15 SYNTHETIC TRIM        |
| 3 PRECAST TYPE 2                            | 10 FIBER CEMENT SIDING TYPE 2 | 16 STOREFRONT GLAZING    |
| 4 BRICK VENEER TYPE 1                       | 11 ALUMINUM CORNICE TYPE 1    | 17 VINYL WINDOW          |
| 5 ROWLOCK PULLED 3/4"                       | 12 ALUMINUM CORNICE TYPE 2    | 18 VINYL PATIO DOOR      |
| 6 SOLDIER PULLED 3/4"                       | 13 ALUMINUM CORNICE TYPE 3    | 19 GLASS PANEL GUARDRAIL |
| 7 BRICK RUNNING BAND PULLED 1/2"            |                               |                          |

NOTES:  
 1. EXISTING PRECAST PANELS TO BE REMOVED, STORED, AND REPLACED TO THE EXTENT FEASIBLE. NEW PANELS, IF REQUIRED, TO MATCH EXISTING.



1 NORTHEAST ELEVATION - S. WALTER REED DR.  
 A.2.00 1/8" = 1'-0"



**DEV**  
**ERE**  
**AUX**

ARCHITECTS  
&  
PLANNERS

1411 CHAIN BRIDGE ROAD • #200 McLEAN, VIRGINIA 22101 • 703.893.0102 • FAX 703.893.0106  
 WWW.DEVEREAUXARCH.COM

© DEVEREAUX & ASSOCIATES EXPRESSLY RESERVES ITS COMMON LAW COPYRIGHT AND OTHER PROPERTY RIGHTS IN THESE PLANS. THESE PLANS ARE NOT TO BE REPRODUCED, CHANGED, OR COPIED IN ANY FORM OR MANNER WHATSOEVER, NOR ARE THEY TO BE ASSIGNED TO ANY THIRD PARTY WITHOUT FIRST OBTAINING THE EXPRESS WRITTEN PERMISSION AND CONSENT OF DEVEREAUX & ASSOCIATES, P.C.

**ELEVATIONS**  
 SCHEMATIC DESIGN  
 FBC SUBMITTAL  
 SUBJECT TO CHANGE DURING WORKING DRAWINGS

**2801 COLUMBIA PIKE**  
 THE CHRISTOPHER COMPANIES  
 ARLINGTON, VIRGINIA



DATE:  
 04.15.2022 FBC SUBMITTAL 01  
 1.23.2022 SUBMITTAL 02

SHEET NO:  
**A.2.00**

SCALE: 1/8" = 1'-0"

0 5 10 20

NORTH



**MATERIAL LIST**

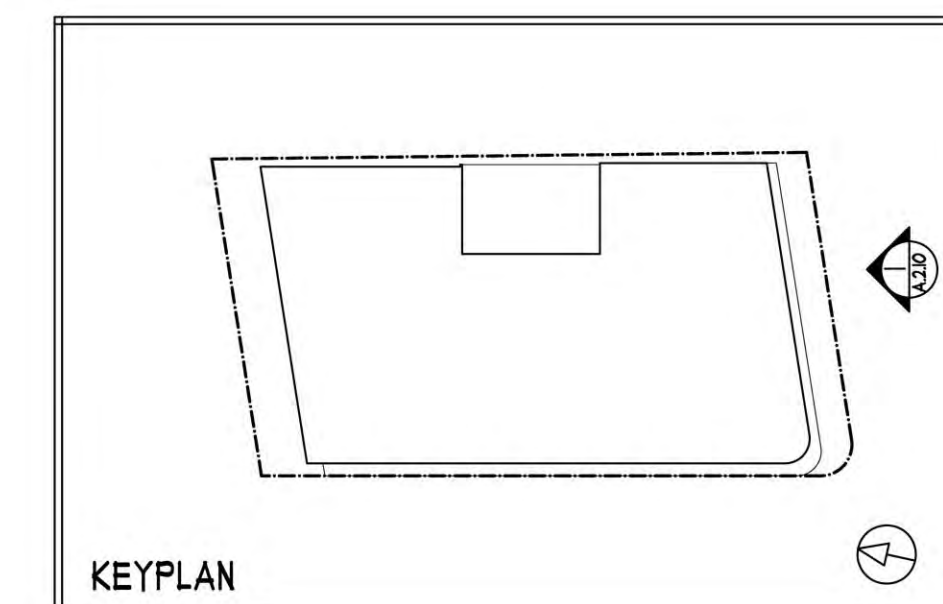
- |   |                               |                          |
|---|-------------------------------|--------------------------|
| 1 PRECAST TYPE 1 (SEE NOTE 1 BELOW)         | 8 FIBER CEMENT PANEL TYPE 1   | 14 ALUMINIUM RAIL        |
| 2 PRECAST BANDING TYPE 1 (SEE NOTE 1 BELOW) | 9 FIBER CEMENT SIDING TYPE 1  | 15 SYNTHETIC TRIM        |
| 3 PRECAST TYPE 2                            | 10 FIBER CEMENT SIDING TYPE 2 | 16 STOREFRONT GLAZING    |
| 4 BRICK VENEER TYPE 1                       | 11 ALUMINUM CORNICE TYPE 1    | 17 VINYL WINDOW          |
| 5 ROWLOCK PULLED 3/4"                       | 12 ALUMINUM CORNICE TYPE 2    | 18 VINYL PATIO DOOR      |
| 6 SOLDIER PULLED 3/4"                       | 13 ALUMINUM CORNICE TYPE 3    | 19 GLASS PANEL GUARDRAIL |
| 7 BRICK RUNNING BAND PULLED 1/2"            |                               |                          |

NOTES:  
 1. EXISTING PRECAST PANELS TO BE REMOVED, STORED, AND REPLACED TO THE EXTENT FEASIBLE. NEW PANELS, IF REQUIRED, TO MATCH EXISTING.  
 2. FINAL MATERIAL SELECTIONS TO BE MADE BY OWNER.



85'-0" MAX BUILDING HEIGHT

1 NORTHWEST ELEVATION - COLUMBIA PIKE  
 A.2.10 1/8" = 1'-0"



ARCHITECTS  
 &  
 PLANNERS  
 1411 CHAIN BRIDGE ROAD • #200 McLEAN, VIRGINIA 22101 • 103.893.0102 • FAX 103.893.0104  
 WWW.DEVEREAUXARCH.COM  
 © DEVEREAUX & ASSOCIATES EXPRESSLY RESERVES ITS COMMON LAW COPYRIGHT AND OTHER PROPERTY RIGHTS IN THESE PLANS. THESE PLANS ARE NOT TO BE REPRODUCED, CHANGED, OR COPIED IN ANY FORM OR MANNER WHATSOEVER, NOR ARE THEY TO BE ASSIGNED TO ANY THIRD PARTY WITHOUT FIRST OBTAINING THE EXPRESS WRITTEN PERMISSION AND CONSENT OF DEVEREAUX & ASSOCIATES, P.C.

**ELEVATIONS**  
 SCHEMATIC DESIGN  
 FBC SUBMITTAL  
 SUBJECT TO CHANGE DURING WORKING DRAWINGS

**2801 COLUMBIA PIKE**  
 THE CHRISTOPHER COMPANIES  
 ARLINGTON, VIRGINIA



DATE: 04.15.2022 FBC SUBMITTAL 01  
 11.23.2022 SUBMITTAL 02

SHEET NO: **A.2.10**

SCALE: 1/8" = 1'-0"

0 5 10 20 NORTH

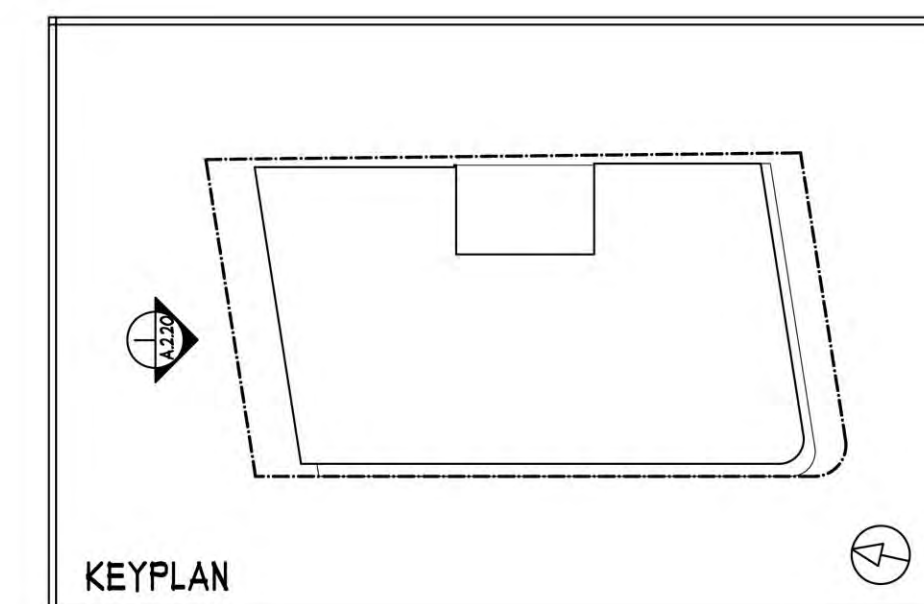
**MATERIAL LIST**

- |   |                               |                          |
|---|-------------------------------|--------------------------|
| 1 PRECAST TYPE 1 (SEE NOTE 1 BELOW)         | 8 FIBER CEMENT PANEL TYPE 1   | 14 ALUMINIUM RAIL        |
| 2 PRECAST BANDING TYPE 1 (SEE NOTE 1 BELOW) | 9 FIBER CEMENT SIDING TYPE 1  | 15 SYNTHETIC TRIM        |
| 3 PRECAST TYPE 2                            | 10 FIBER CEMENT SIDING TYPE 2 | 16 STOREFRONT GLAZING    |
| 4 BRICK VENEER TYPE 1                       | 11 ALUMINIUM CORNICE TYPE 1   | 17 VINYL WINDOW          |
| 5 ROWLOCK PULLED 3/4"                       | 12 ALUMINIUM CORNICE TYPE 2   | 18 VINYL PATIO DOOR      |
| 6 SOLDIER PULLED 3/4"                       | 13 ALUMINIUM CORNICE TYPE 3   | 19 GLASS PANEL GUARDRAIL |
| 7 BRICK RUNNING BAND PULLED 1/2"            |                               |                          |

NOTES:  
 1. EXISTING PRECAST PANELS TO BE REMOVED, STORED, AND REPLACED TO THE EXTENT FEASIBLE. NEW PANELS, IF REQUIRED, TO MATCH EXISTING.  
 2. FINAL MATERIAL SELECTIONS TO BE MADE BY OWNER



1 SOUTHEAST ELEVATION  
 A.2.20 1/8" = 1'-0"



KEYPLAN



ARCHITECTS  
 &  
 PLANNERS

1411 CHAIN BRIDGE ROAD • #200 McLEAN, VIRGINIA 22101 • 703.893.0102 • FAX 703.893.0104  
 WWW.DEVEREAUXARCH.COM

© DEVEREAUX & ASSOCIATES EXPRESSLY RESERVES ITS COMMON LAW COPYRIGHT AND OTHER PROPERTY RIGHTS IN THESE PLANS. THESE PLANS ARE NOT TO BE REPRODUCED, CHANGED, OR COPIED IN ANY FORM OR MANNER WHATSOEVER, NOR ARE THEY TO BE ASSIGNED TO ANY THIRD PARTY WITHOUT FIRST OBTAINING THE EXPRESS WRITTEN PERMISSION AND CONSENT OF DEVEREAUX & ASSOCIATES, P.C.

**ELEVATIONS**

SCHEMATIC DESIGN  
 FBC SUBMITTAL

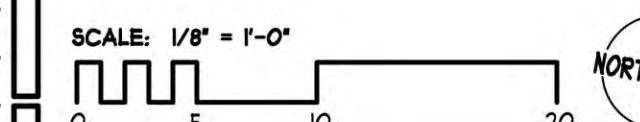
SUBJECT TO CHANGE DURING WORKING DRAWINGS

**2801 COLUMBIA PIKE**  
 THE CHRISTOPHER COMPANIES  
 ARLINGTON, VIRGINIA



DATE:	SHEET NO:
04.15.2022 FBC SUBMITTAL 01	
11.23.2022 SUBMITTAL 02	

**A.2.20**



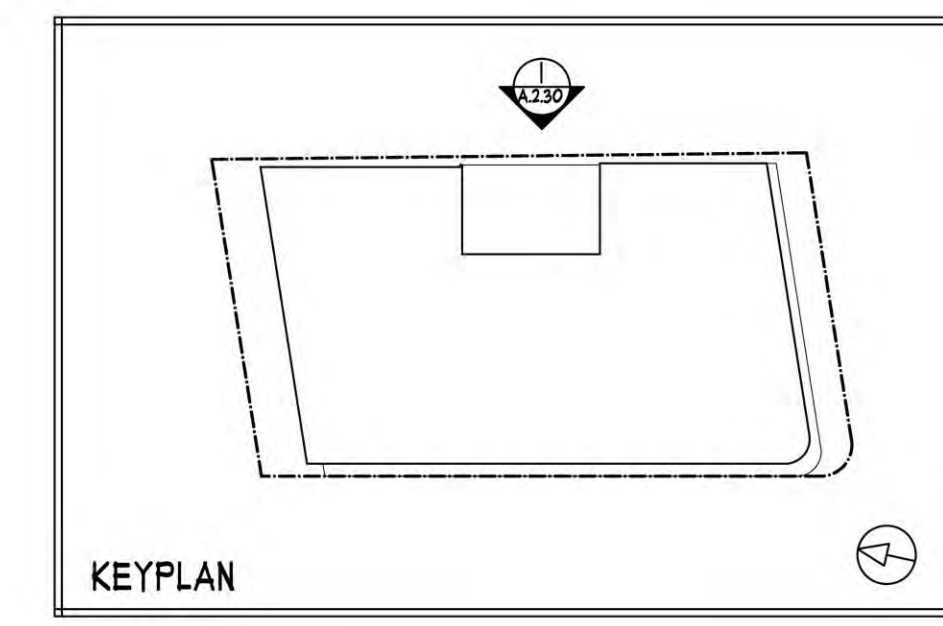
**MATERIAL LIST**

- |   |                               |                          |
|---|-------------------------------|--------------------------|
| 1 PRECAST TYPE 1 (SEE NOTE 1 BELOW)         | 8 FIBER CEMENT PANEL TYPE 1   | 14 ALUMINIUM RAIL        |
| 2 PRECAST BANDING TYPE 1 (SEE NOTE 1 BELOW) | 9 FIBER CEMENT SIDING TYPE 1  | 15 SYNTHETIC TRIM        |
| 3 PRECAST TYPE 2                            | 10 FIBER CEMENT SIDING TYPE 2 | 16 STOREFRONT GLAZING    |
| 4 BRICK VENEER TYPE 1                       | 11 ALUMINIUM CORNICE TYPE 1   | 17 VINYL WINDOW          |
| 5 ROWLOCK PULLED 3/4"                       | 12 ALUMINIUM CORNICE TYPE 2   | 18 VINYL PATIO DOOR      |
| 6 SOLDIER PULLED 3/4"                       | 13 ALUMINIUM CORNICE TYPE 3   | 19 GLASS PANEL GUARDRAIL |
| 7 BRICK RUNNING BAND PULLED 1/2"            |                               |                          |

NOTES:  
 1. EXISTING PRECAST PANELS TO BE REMOVED, STORED, AND REPLACED TO THE EXTENT FEASIBLE. NEW PANELS, IF REQUIRED, TO MATCH EXISTING.  
 2. FINAL MATERIAL SELECTIONS TO BE MADE BY OWNER.



1 | SOUTHWEST ELEVATION  
 A.2.30 | 1/8" = 1'-0"



ARCHITECTS  
 &  
 PLANNERS  
 1111 CHAIN BRIDGE ROAD • #200 McLEAN, VIRGINIA 22101 • 703.893.0102 • FAX 703.893.0104  
 WWW.DEVEREAUXARCH.COM  
 © DEVEREAUX 1 ASSOCIATES EXPRESSLY RESERVES ITS COMMON LAW COPYRIGHT AND OTHER PROPERTY RIGHTS IN THESE PLANS. THESE PLANS ARE NOT TO BE REPRODUCED, CHANGED, OR COPIED IN ANY FORM OR MANNER WHATSOEVER, NOR ARE THEY TO BE ASSIGNED TO ANY THIRD PARTY WITHOUT FIRST OBTAINING THE EXPRESS WRITTEN PERMISSION AND CONSENT OF DEVEREAUX 1 ASSOCIATES, P.C.

**ELEVATIONS**  
 SCHEMATIC DESIGN  
 FBC SUBMITTAL  
 SUBJECT TO CHANGE DURING WORKING DRAWINGS

**2801 COLUMBIA PIKE**  
 THE CHRISTOPHER COMPANIES  
 ARLINGTON, VIRGINIA



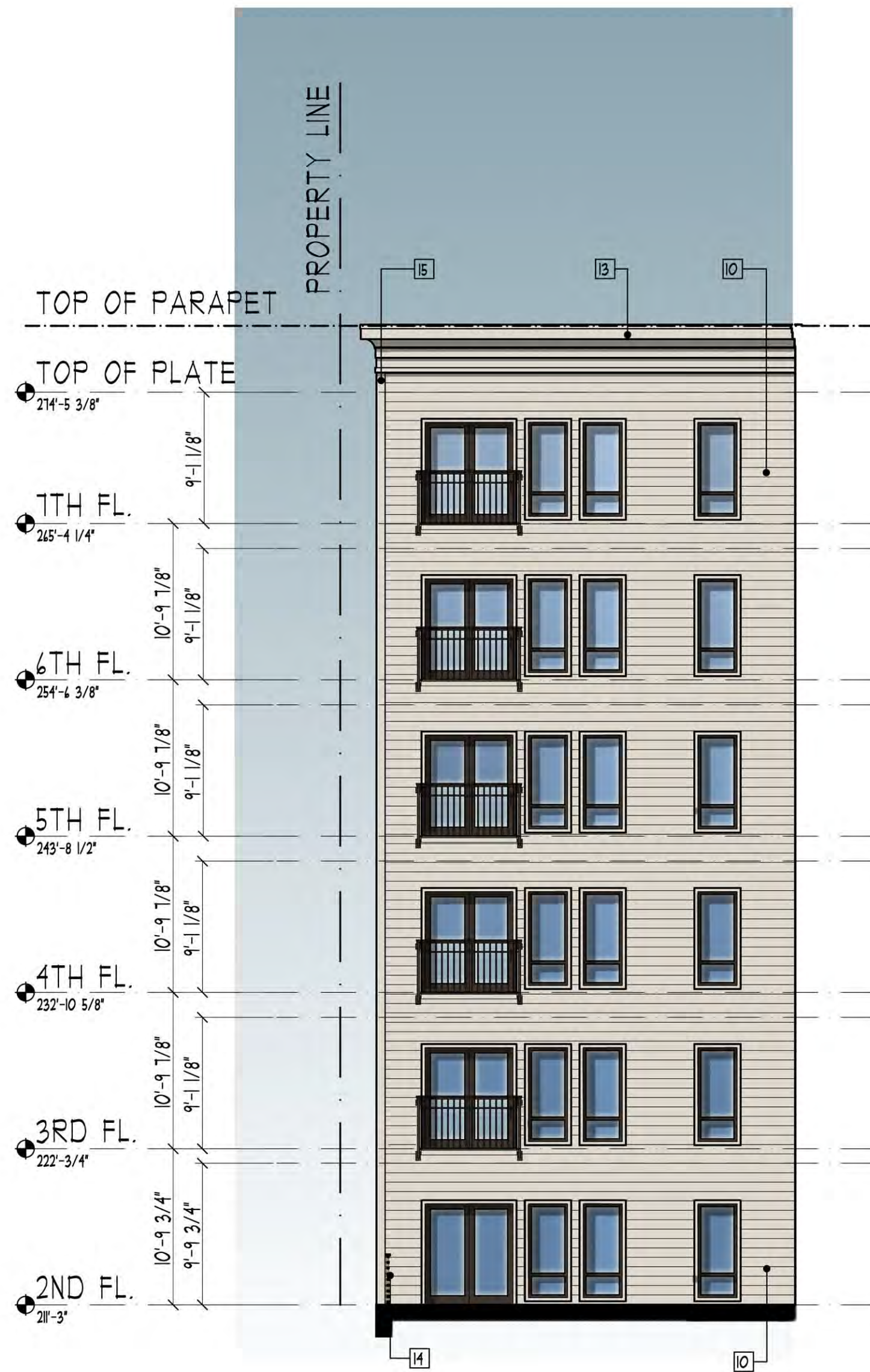
DATE:  
 04.15.2022 FBC SUBMITTAL 01  
 11.23.2022 SUBMITTAL 02

SHEET NO:  
**A.2.30**  
 SCALE: 1/8" = 1'-0"  
 NORTH

**MATERIAL LIST**

- |   |                               |                          |
|---|-------------------------------|--------------------------|
| 1 PRECAST TYPE 1 (SEE NOTE 1 BELOW)         | 8 FIBER CEMENT PANEL TYPE 1   | 14 ALUMINIUM RAIL        |
| 2 PRECAST BANDING TYPE 1 (SEE NOTE 1 BELOW) | 9 FIBER CEMENT SIDING TYPE 1  | 15 SYNTHETIC TRIM        |
| 3 PRECAST TYPE 2                            | 10 FIBER CEMENT SIDING TYPE 2 | 16 STOREFRONT GLAZING    |
| 4 BRICK VENEER TYPE 1                       | 11 ALUMINUM CORNICE TYPE 1    | 17 VINYL WINDOW          |
| 5 ROWLOCK PULLED 3/4"                       | 12 ALUMINUM CORNICE TYPE 2    | 18 VINYL PATIO DOOR      |
| 6 SOLDIER PULLED 3/4"                       | 13 ALUMINUM CORNICE TYPE 3    | 19 GLASS PANEL GUARDRAIL |
| 7 BRICK RUNNING BAND PULLED 1/2"            |                               |                          |

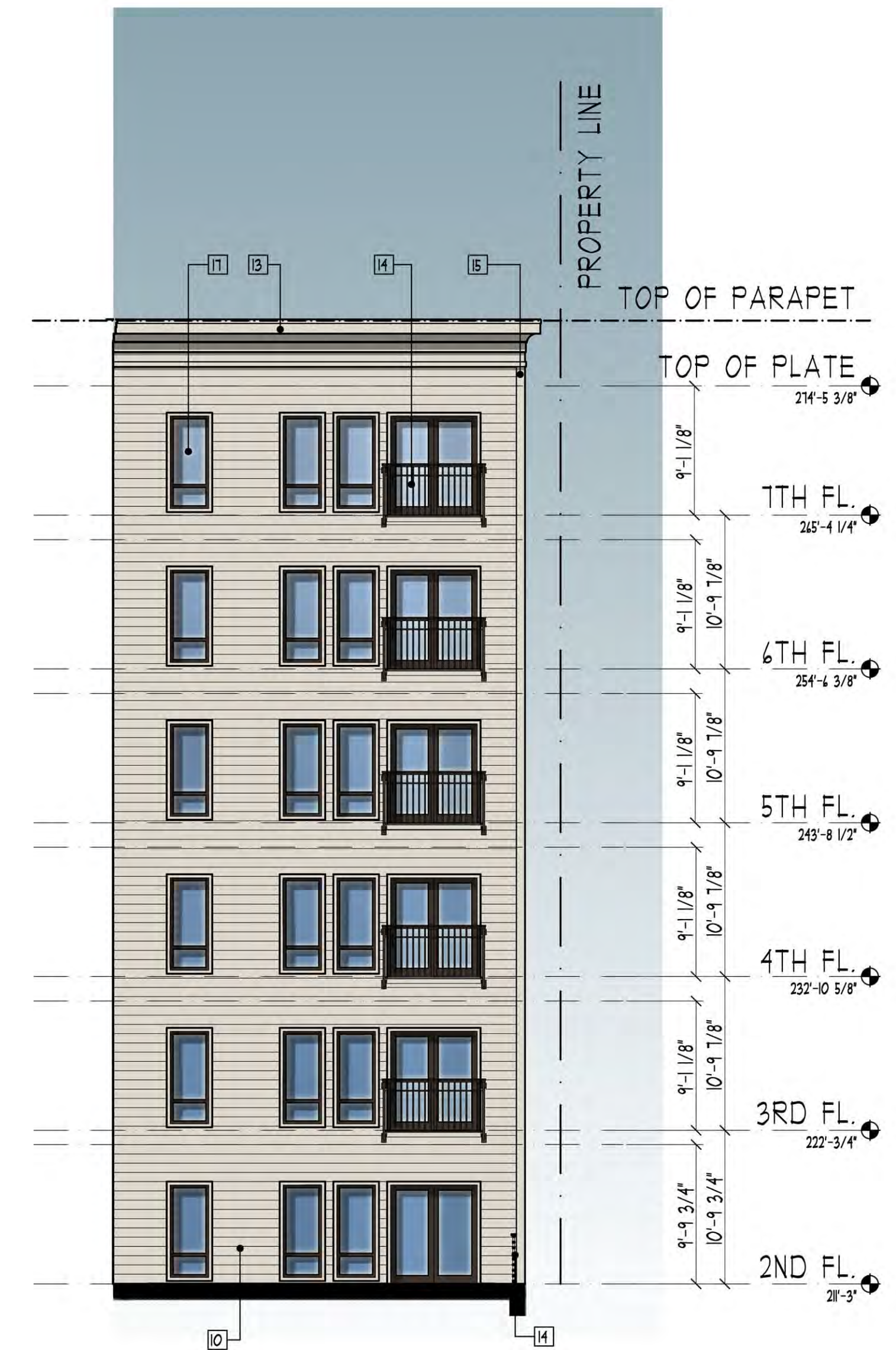
NOTES:  
 1. EXISTING PRECAST PANELS TO BE REMOVED, STORED, AND REPLACED TO THE EXTENT FEASIBLE. NEW PANELS, IF REQUIRED, TO MATCH EXISTING.  
 2. FINAL MATERIAL SELECTIONS TO BE MADE BY OWNER.



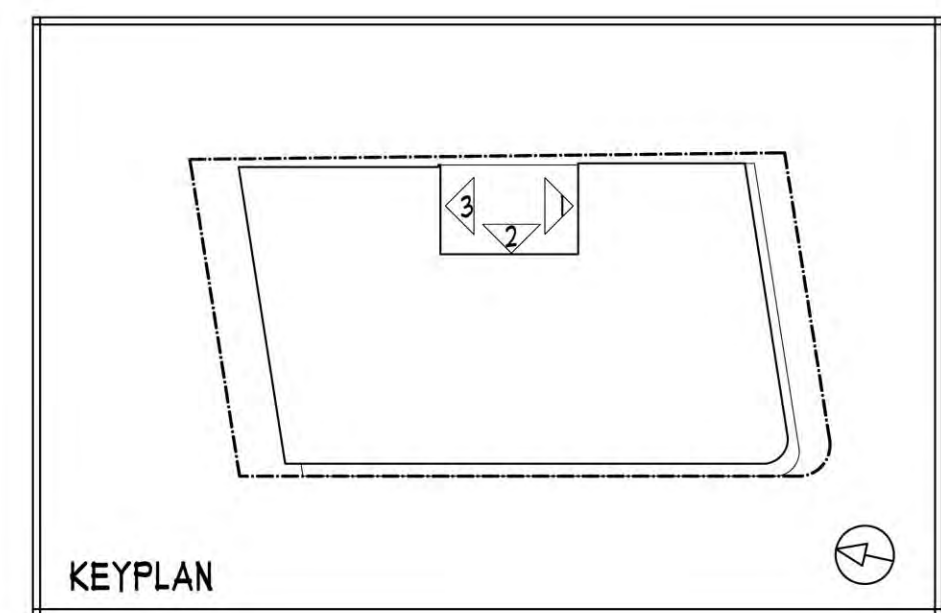
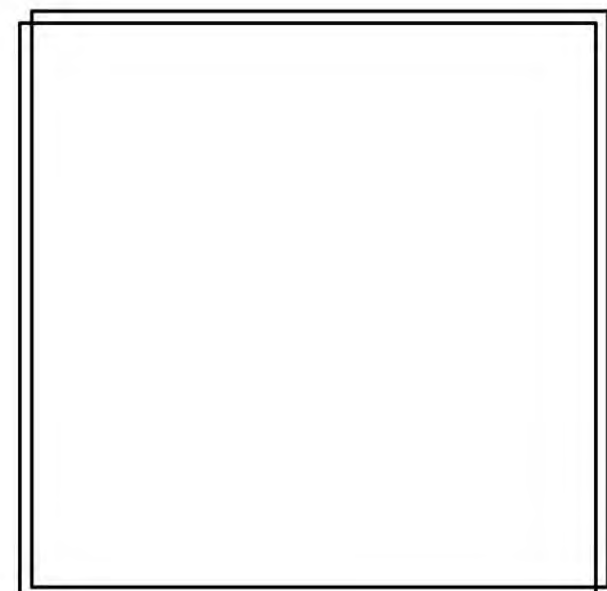
1 NORTHWEST COURTYARD ELEVATION  
 A.2.40 1/8" = 1'-0"



2 SOUTHWEST COURTYARD ELEVATION  
 A.2.40 1/8" = 1'-0"



3 SOUTHEAST COURTYARD ELEVATION  
 A.2.40 1/8" = 1'-0"



KEYPLAN



ARCHITECTS  
 &  
 PLANNERS  
 1111 CHAIN BRIDGE ROAD • #200 McLEAN, VIRGINIA 22101 • 703.893.0102 • FAX 703.893.0104  
 WWW.DEVEREAUXARCH.COM

© DEVEREAUX & ASSOCIATES EXPRESSLY RESERVES ITS COMMON LAW COPYRIGHT AND OTHER PROPERTY RIGHTS IN THESE PLANS. THESE PLANS ARE NOT TO BE REPRODUCED, CHANGED, OR COPIED IN ANY FORM OR MANNER WHATSOEVER, NOR ARE THEY TO BE ASSIGNED TO ANY THIRD PARTY WITHOUT FIRST OBTAINING THE EXPRESS WRITTEN PERMISSION AND CONSENT OF DEVEREAUX & ASSOCIATES, P.C.

**ELEVATIONS**

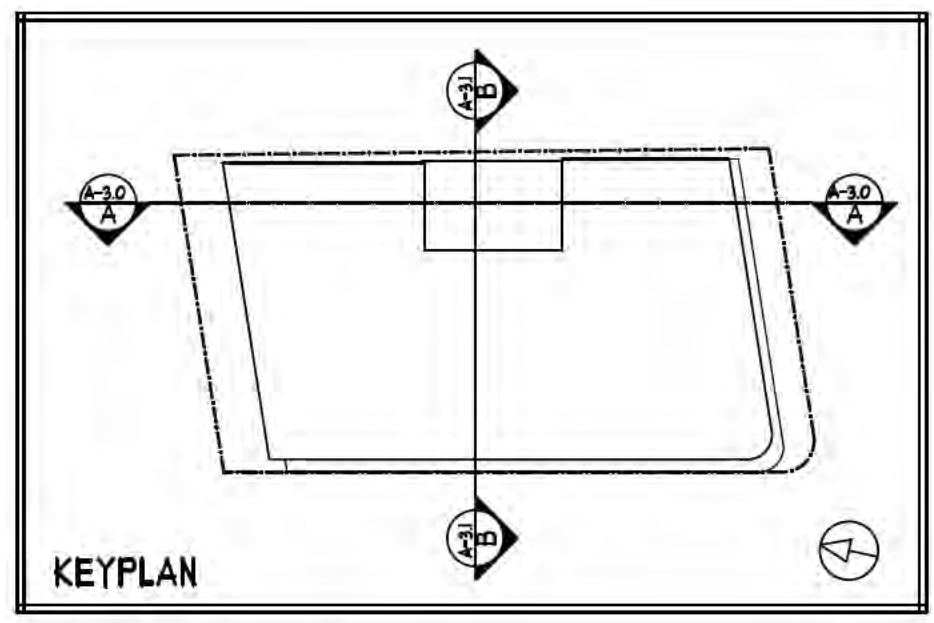
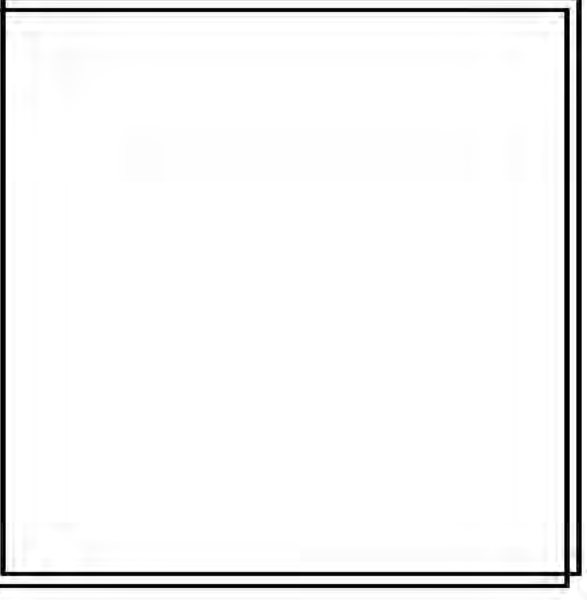
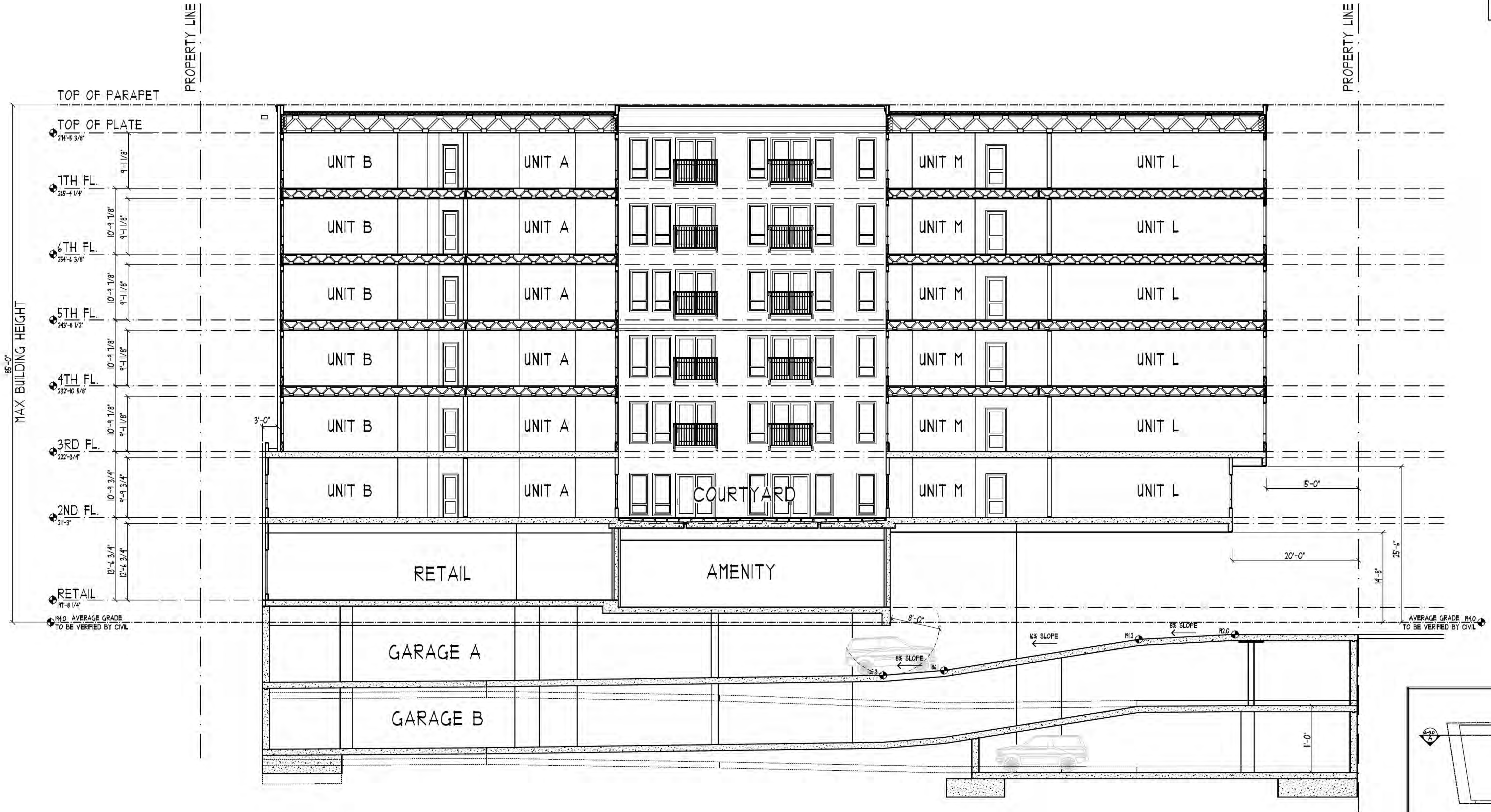
SCHEMATIC DESIGN  
 FBC SUBMITTAL  
 SUBJECT TO CHANGE DURING WORKING DRAWINGS

2801 COLUMBIA PIKE  
 THE CHRISTOPHER COMPANIES  
 ARLINGTON, VIRGINIA



DATE:  
 04.15.2022 FBC SUBMITTAL 01  
 11.23.2022 SUBMITTAL 02

SHEET NO:  
**A.2.40**  
 SCALE: 1/8" = 1'-0"  
 NORTH



**DEVEREAUX** ARCHITECTS & PLANNERS

1411 CHAIN BRIDGE ROAD • #200 McLEAN, VIRGINIA 22101 • 703.893.0102 • FAX 703.893.0104  
WWW.DEVEREAUXARCH.COM

© DEVEREAUX & ASSOCIATES EXPRESSLY RESERVES ITS COMMON LAW COPYRIGHT AND OTHER PROPERTY RIGHTS IN THESE PLANS. THESE PLANS ARE NOT TO BE REPRODUCED, CHANGED, OR COPIED IN ANY FORM OR MANNER WHATSOEVER, NOR ARE THEY TO BE ASSIGNED TO ANY THIRD PARTY WITHOUT FIRST OBTAINING THE EXPRESS WRITTEN PERMISSION AND CONSENT OF DEVEREAUX & ASSOCIATES, P.C.

**BUILDING SECTION A**

SCHEMATIC DESIGN  
FBC SUBMITTAL

SUBJECT TO CHANGE DURING WORKING DRAWINGS

**2801 COLUMBIA PIKE**  
THE CHRISTOPHER COMPANIES  
ARLINGTON, VIRGINIA

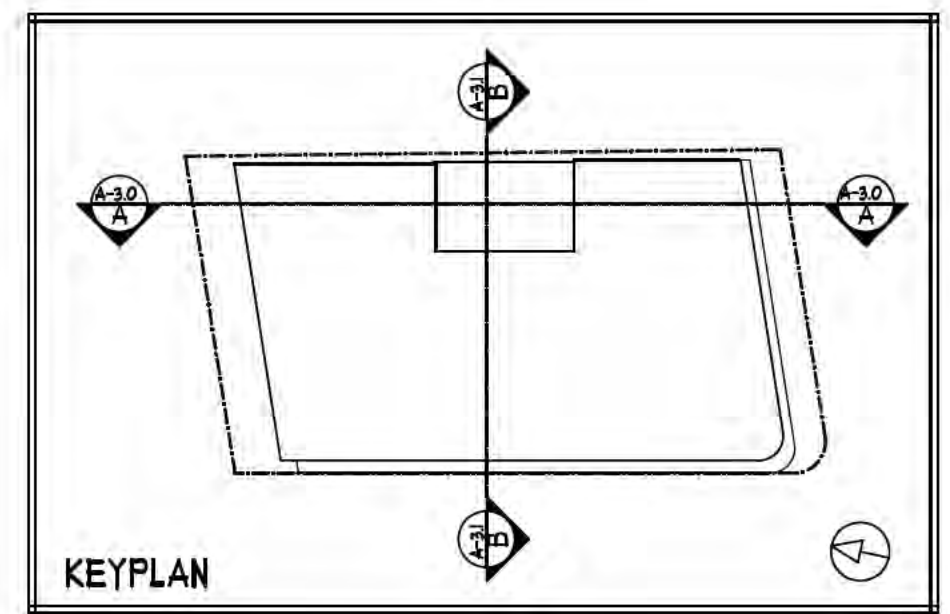
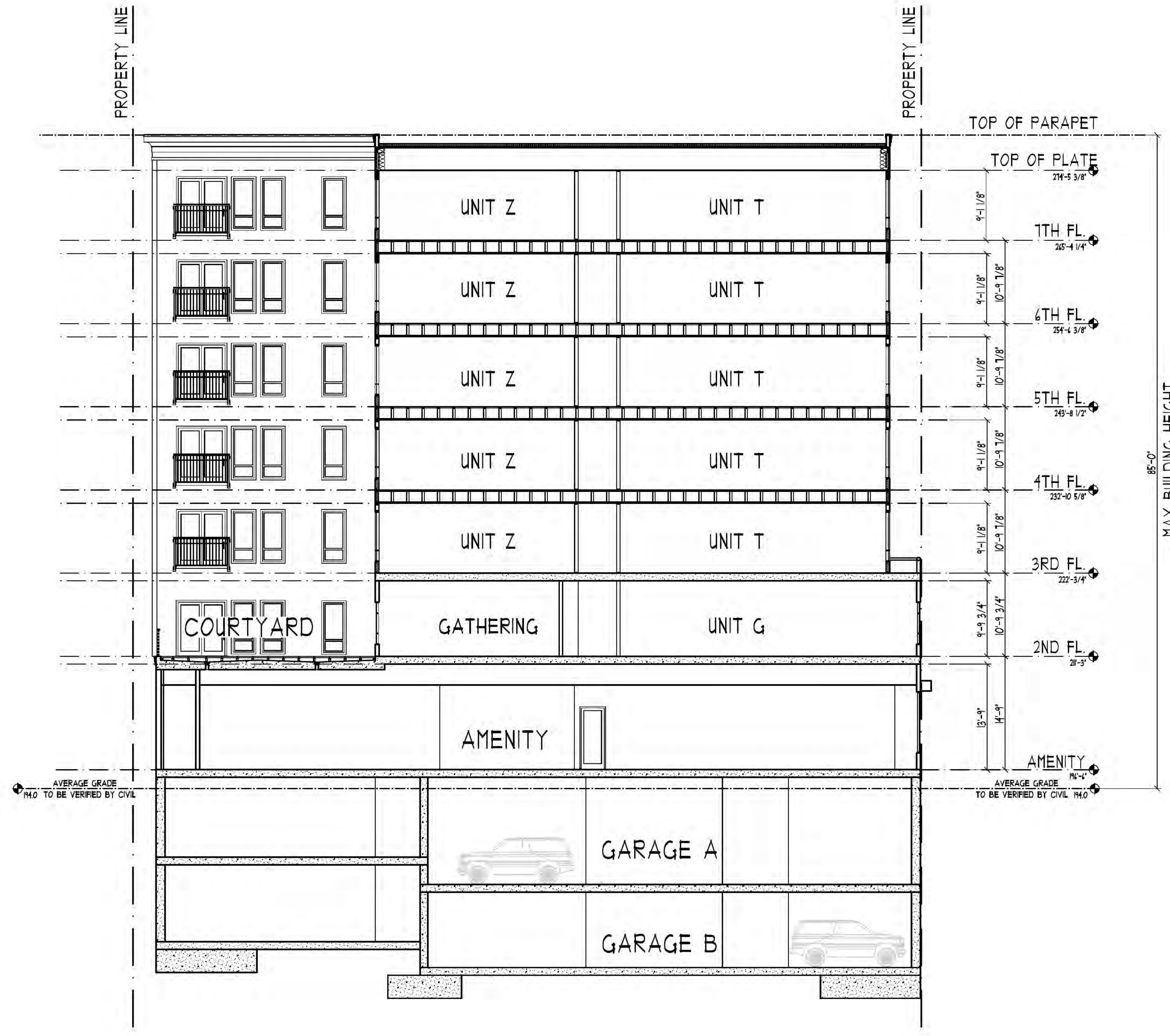
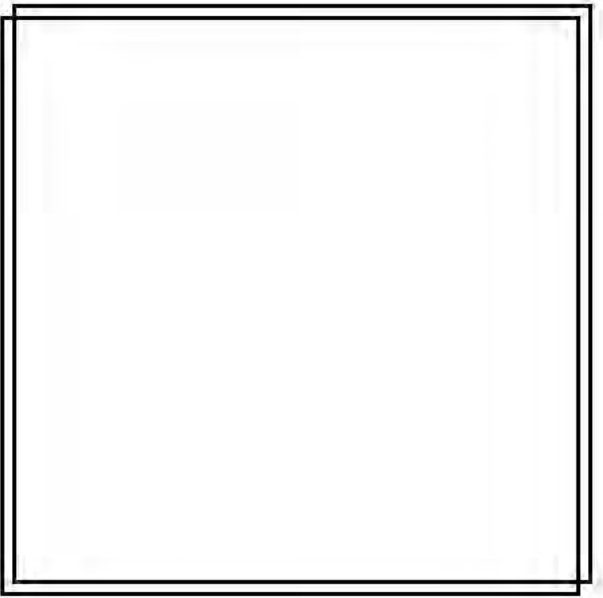


DATE: 01.5.2022 FBC SUBMITTAL 01  
1.23.2022 SUBMITTAL 02

SHEET NO: **A.3.00**

SCALE: 1/8" = 1'-0"

0 5 10 20 NORTH



ARCHITECTS  
&  
PLANNERS

1411 CHAIN BRIDGE ROAD • #200 McLEAN, VIRGINIA 22101 • 703.893.0102 • FAX 703.893.0104  
WWW.DEVEREAUXARCH.COM

© DEVEREAUX ASSOCIATES EXPRESSLY RESERVES ITS COMMON LAW COPYRIGHT AND OTHER PROPERTY RIGHTS IN THESE PLANS. THESE PLANS ARE NOT TO BE REPRODUCED, CHANGED, OR COPIED IN ANY FORM OR MANNER WHATSOEVER NOR ARE THEY TO BE ASSIGNED TO ANY THIRD PARTY WITHOUT FIRST OBTAINING THE EXPRESS WRITTEN PERMISSION AND CONSENT OF DEVEREAUX ASSOCIATES, P.C.

# BUILDING SECTION B

SCHEMATIC DESIGN  
FBC SUBMITTAL

SUBJECT TO CHANGE DURING WORKING DRAWINGS

2801 COLUMBIA PIKE  
THE CHRISTOPHER COMPANIES  
ARLINGTON, VIRGINIA



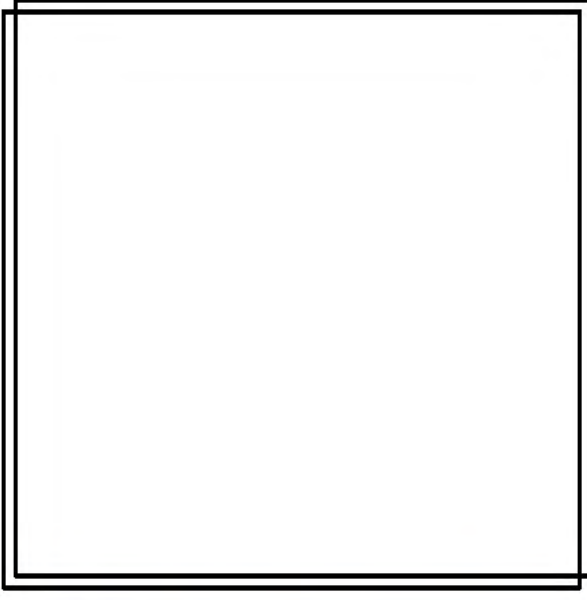
DATE:	01.15.2022 FBC SUBMITTAL 01
	1.23.2022 SUBMITTAL 02

SHEET NO:

# A.3.01

SCALE: 1/8" = 1'-0"

NORTH



ARCHITECTS  
&  
PLANNERS

411 CHAIN BRIDGE ROAD • #200 McLEAN, VIRGINIA 22101 • 703.893.0102 • FAX 703.893.0104  
WWW.DEVEREAUXARCH.COM

© DEVEREAUX | ASSOCIATES EXPRESSLY RESERVES ITS COMMON LAW COPYRIGHT AND OTHER PROPERTY RIGHTS IN THESE PLANS. THESE PLANS ARE NOT TO BE REPRODUCED, CHANGED OR COPIED IN ANY FORM OR MANNER WHATSOEVER NOR ARE THEY TO BE ASSIGNED TO ANY THIRD PARTY WITHOUT FIRST OBTAINING THE EXPRESS WRITTEN PERMISSION AND CONSENT OF DEVEREAUX | ASSOCIATES, P.C.

# MASSING STUDIES

SCHEMATIC DESIGN  
FBC SUBMITTAL

SUBJECT TO CHANGE DURING WORKING DRAWINGS

2801 COLUMBIA PIKE  
THE CHRISTOPHER COMPANIES  
ARLINGTON, VIRGINIA



DATE:	04/5/2022_FBC SUBMITTAL 01
	04/23/2022 SUBMITTAL 02

SHEET NO:

## A.4.00

SCALE: 1/8" = 1'-0"

