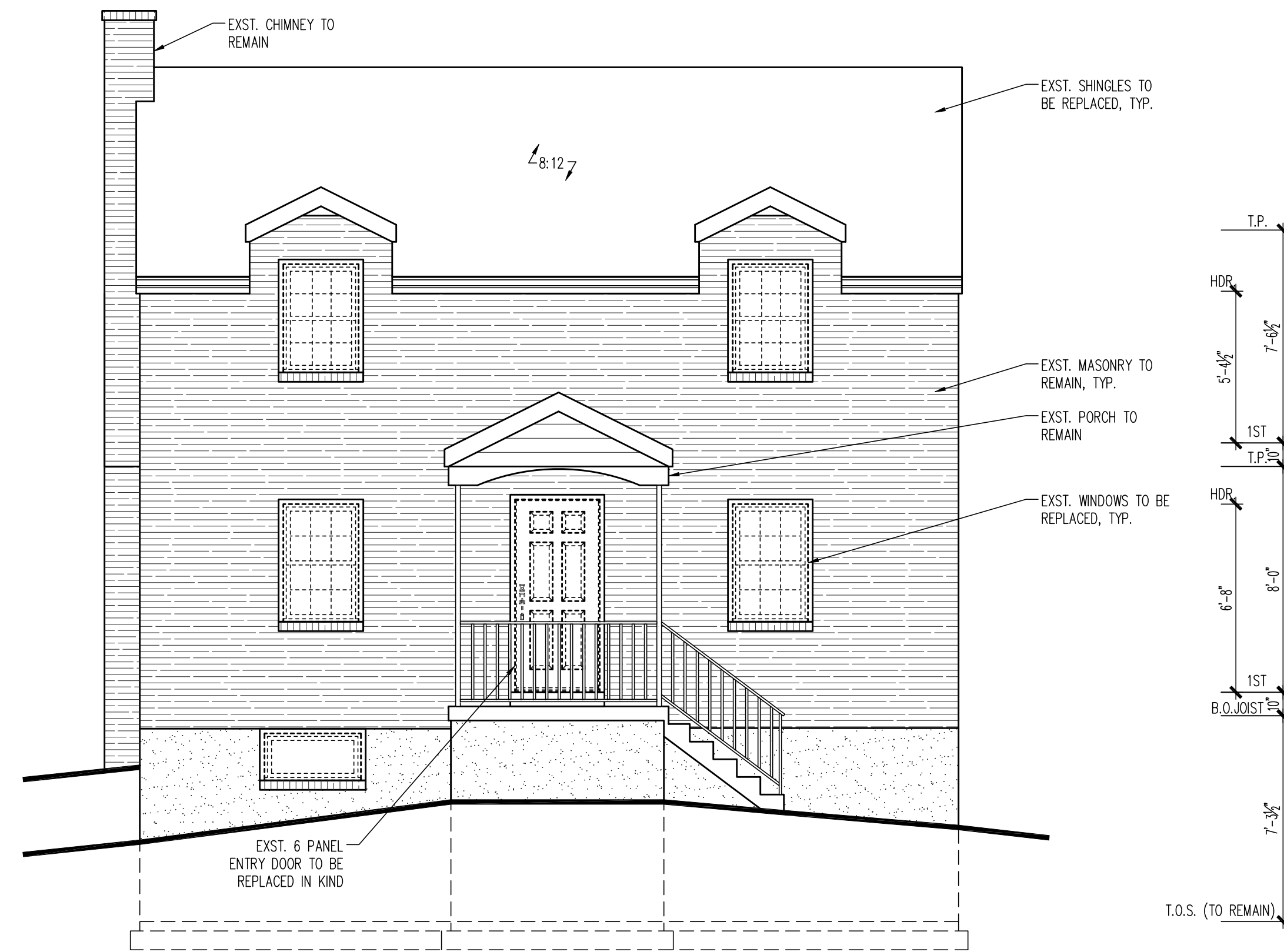




Re-Elect  
**DON BEYER**  
\*\*\*\*\*FOR OBESS\*\*\*\*\*  
[www.donbeyer.com](http://www.donbeyer.com)

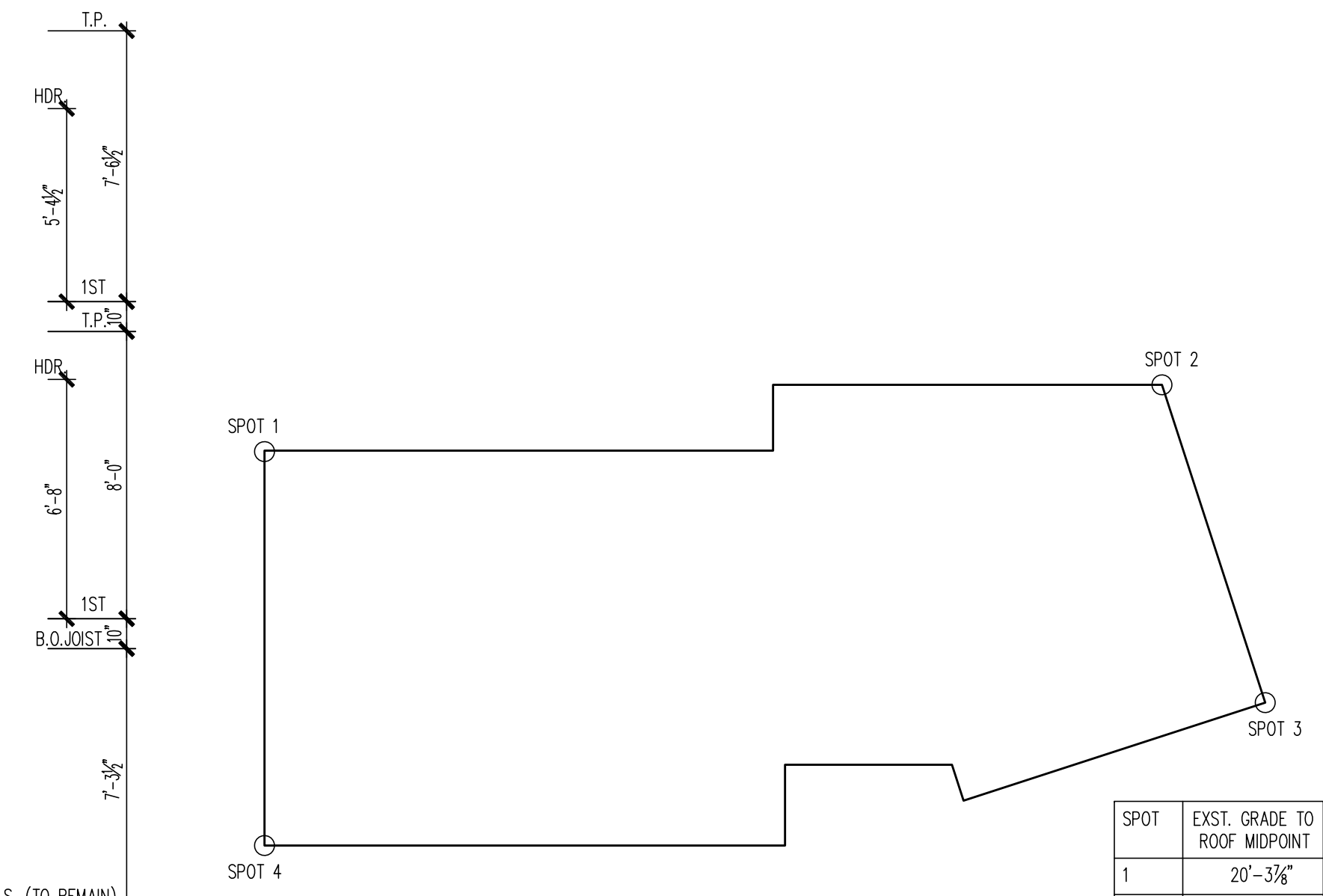
**MATT de FERRANTI**  
ARLINGTON  
COUNTY BOARD  
DEMOCRAT  
[www.MattForArlington.com](http://www.MattForArlington.com)

Re-Elect  
**Barbara**  
**Kanninen**  
FOR ARLINGTON COUNTY SCHOOL BOARD



**EXISTING FRONT ELEVATION**

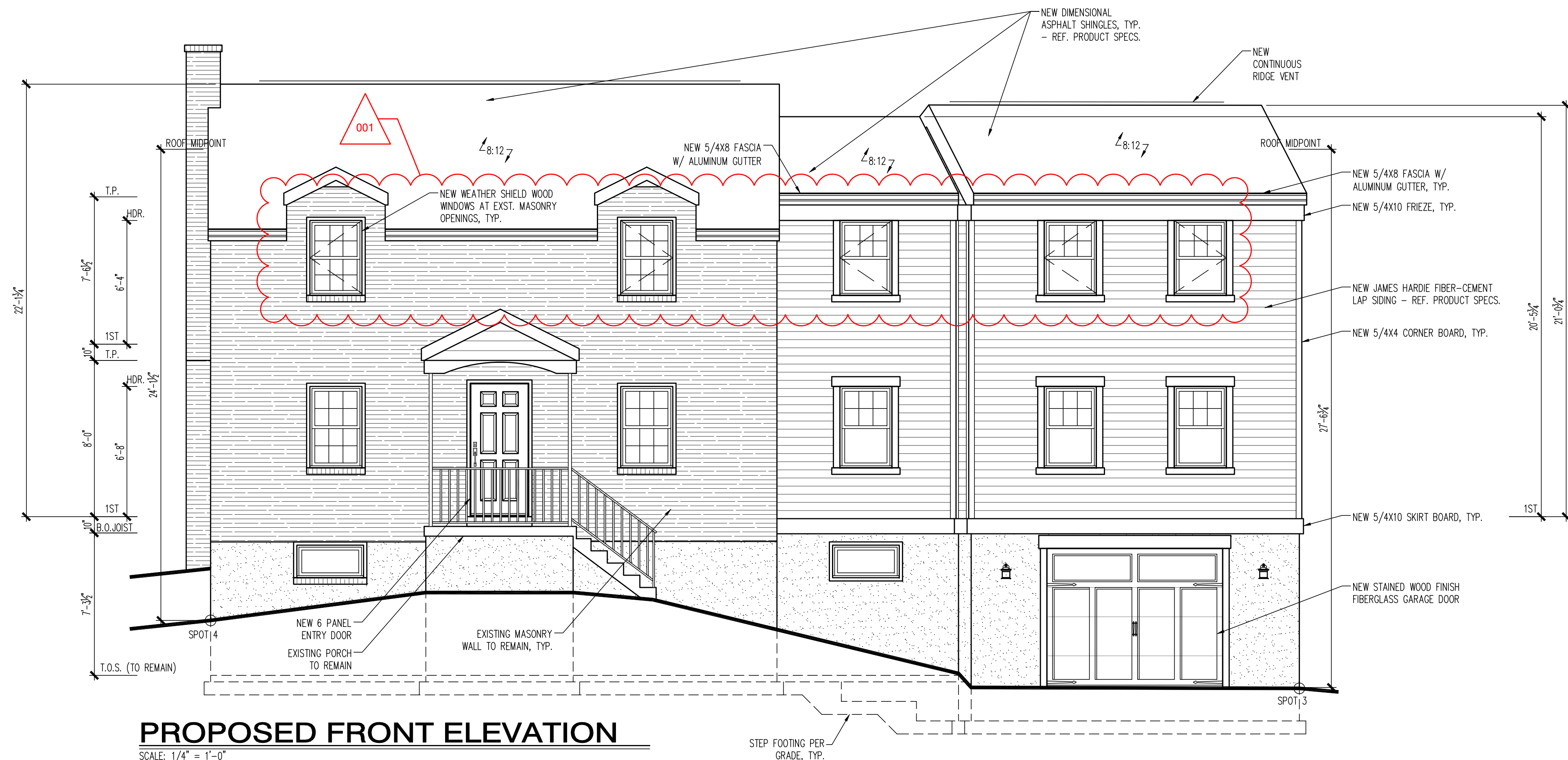
SCALE: 1/4" = 1'-0"



**BUILDING HEIGHT KEY**

SCALE: 1/8" = 1'-0"

SPOT	EXST. GRADE TO ROOF MIDPOINT
1	20'-3 7/8"
2	24'-8 1/4"
3	27'-6 3/4"
4	24'-1 1/2"
TOTAL	96'-8 1/4"
AVERAGE	24'-2 1/8"



**PROPOSED FRONT ELEVATION**

SCALE: 1/4" = 1'-0"

22x34 Plotted at 1/4"=1'-0" - 11x17 Plotted at 1/8" = 1'-0"  
**RENOVATION & ADDITION - 2329 N EDGEWOOD ST**  
**EXISTING & PROPOSED FRONT ELEVATIONS**



DRAWN BY:	
MRD	
DATE:	02/02/22
REV No.	DATE
002	04-01-22

22-000

SHEET No.  
**A4.1**



*Model 8300, Sonoma Ranch panel, Brown finish, Arched Stockton windows, Decorative hardware*

### DOOR FEATURES

#### Effective Joint Seals

Snug-fitting tongue-and-groove section joints reduces wind and weather from entering the garage.

#### Foamed-In-Place Polyurethane Insulation

provides thermal efficiency with an R-value\* of 12.12† for Model 8300 and 16.22 for Model 8500.

#### Heavy Gauge Steel End Caps

Wrap-around end caps trim out door edges for better appearance, improved strength and protect the insulation from damage.



- **Silent Glide Rollers**

Nylon rollers with solid steel shafts provide years of smooth, quiet and dependable operation

- **High Cycle Spring Option**

Choose a 25,000 cycle spring for more than twice the life of a standard torsion spring

- **Wind Load Options**

Available with structural reinforcements for use in coastal or high wind region



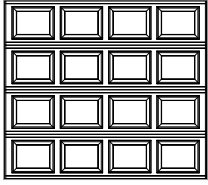
- **Limited Lifetime Warranty**



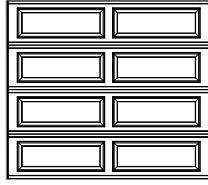
\*Wayne Dalton uses a calculated door section R-value for our insulated doors.

†R-value is for 8' tall doors. R-value for other door heights may vary slightly. See website for warranty and wind load details.

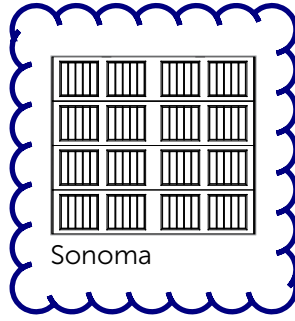
# 1 Choose Your Style



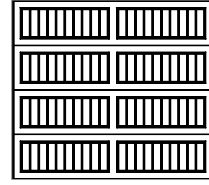
Colonial



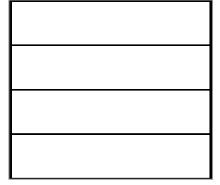
Ranch



Sonoma



Sonoma Ranch  
(Model 8300 only)



Contemporary

# 2 Choose Your Color

## Paint Finishes (Standard)



White



Almond



Taupe



Terra Bronze



Brown



Black

## Bi-Directional Wood-Grain Finishes

Available on Sonoma and Sonoma Ranch only



Golden Oak



Mission Oak



Walnut

Actual colors may vary from brochure due to fluctuations in the printing process.  
Always request a color sample from your dealer for accurate color matching before ordering your door.



Available with the TruChoice® Color System, Wayne Dalton's custom painting process that offers more than 6,000 colors. See dealer for details.

# 3 Choose Your Windows

## For Colonial and Contemporary Panels



Clear I



Clear III\*



Cascade I



Cascade III\*



Cathedral I



Stockton I



Stockton III\*



Arched Stockton\*



Stockbridge\*



Prairie I



Waterton I



Waterton III\*



Williamsburg I



Sherwood I

## For Ranch Panels



Clear II



Cascade II



Cathedral II



Prairie II



Sherwood II\*\*



Stockbridge II



Stockton II



Waterton II



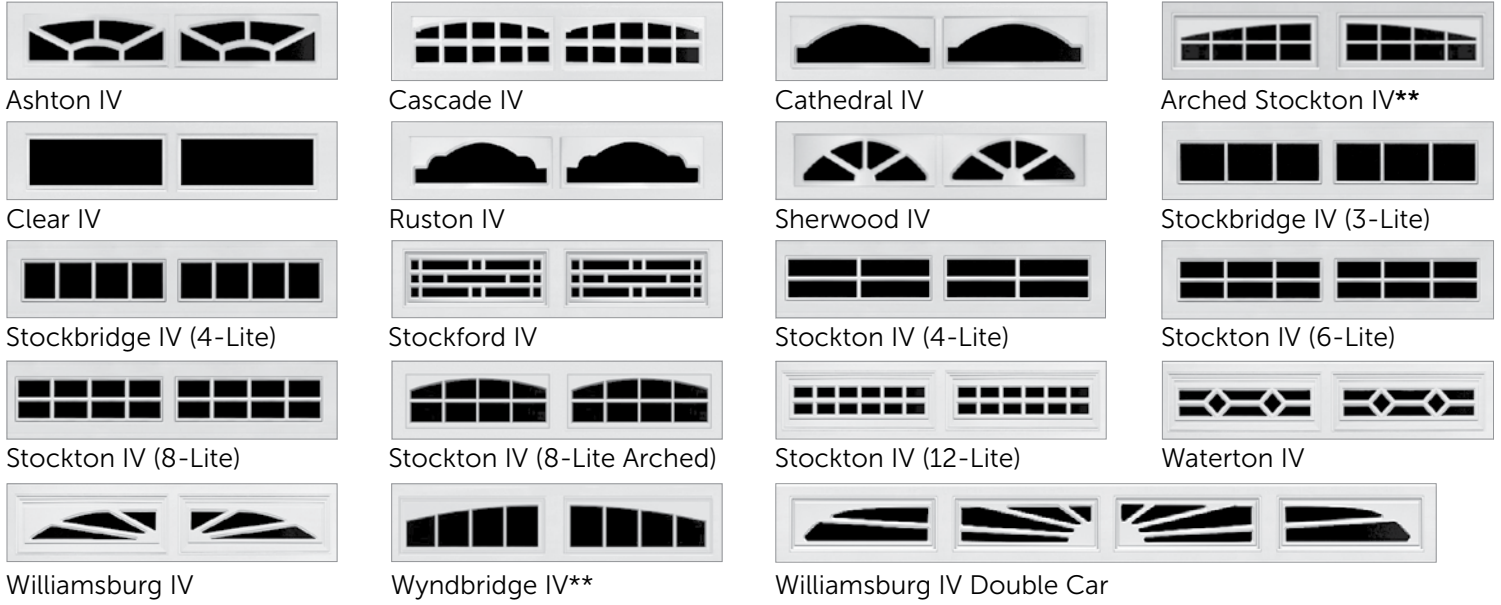
Williamsburg II\*\*



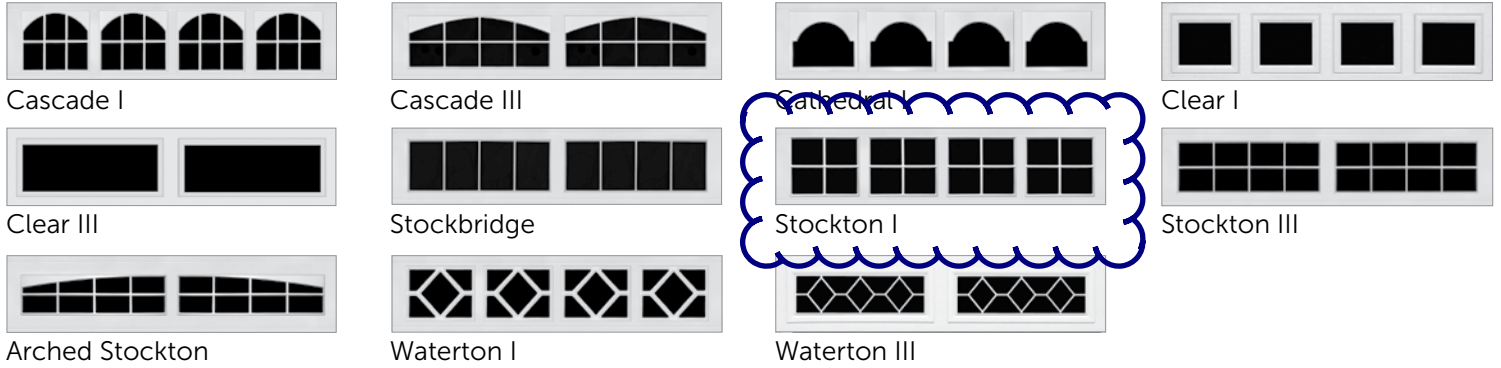
Williamsburg II Single Arch

\*Contemporary Panel only.  
\*\*Available only on doors with an even number of panels.

**For Sonoma Ranch Panels (Model 8300 only)**



**For Sonoma Panels**

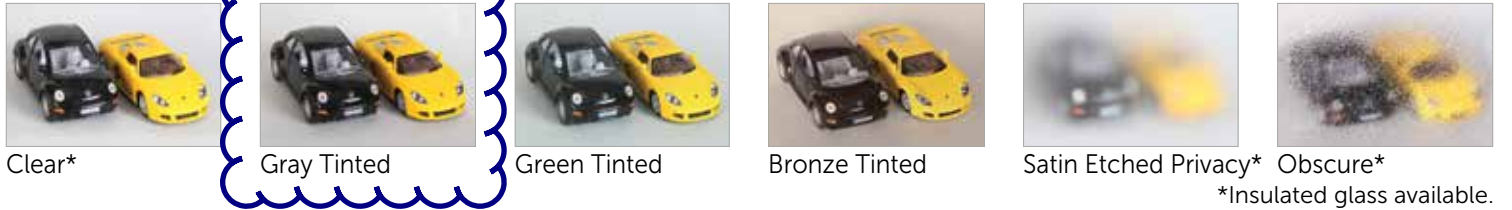


Choice of single or double arch is available for arched top double car windows.



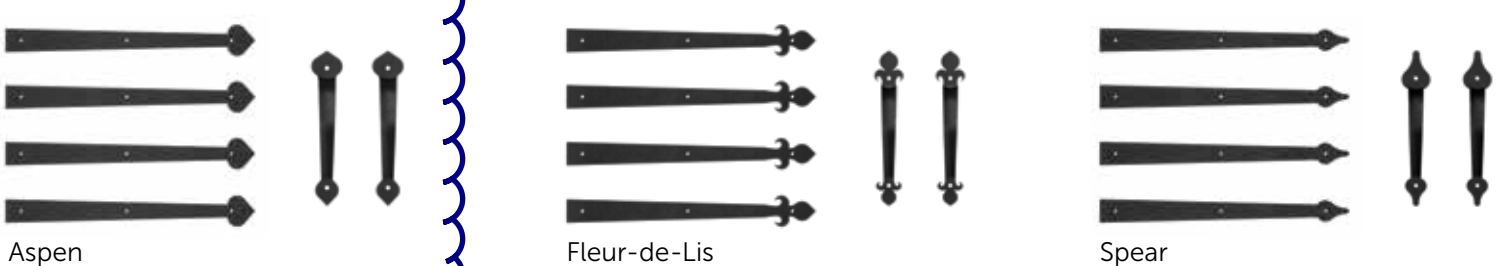
Not all windows available in all areas. Windows shown are typical of an 8' wide door and placement may vary by panel design. Consult your dealer for details.

**Glass Options**



\*Insulated glass available.

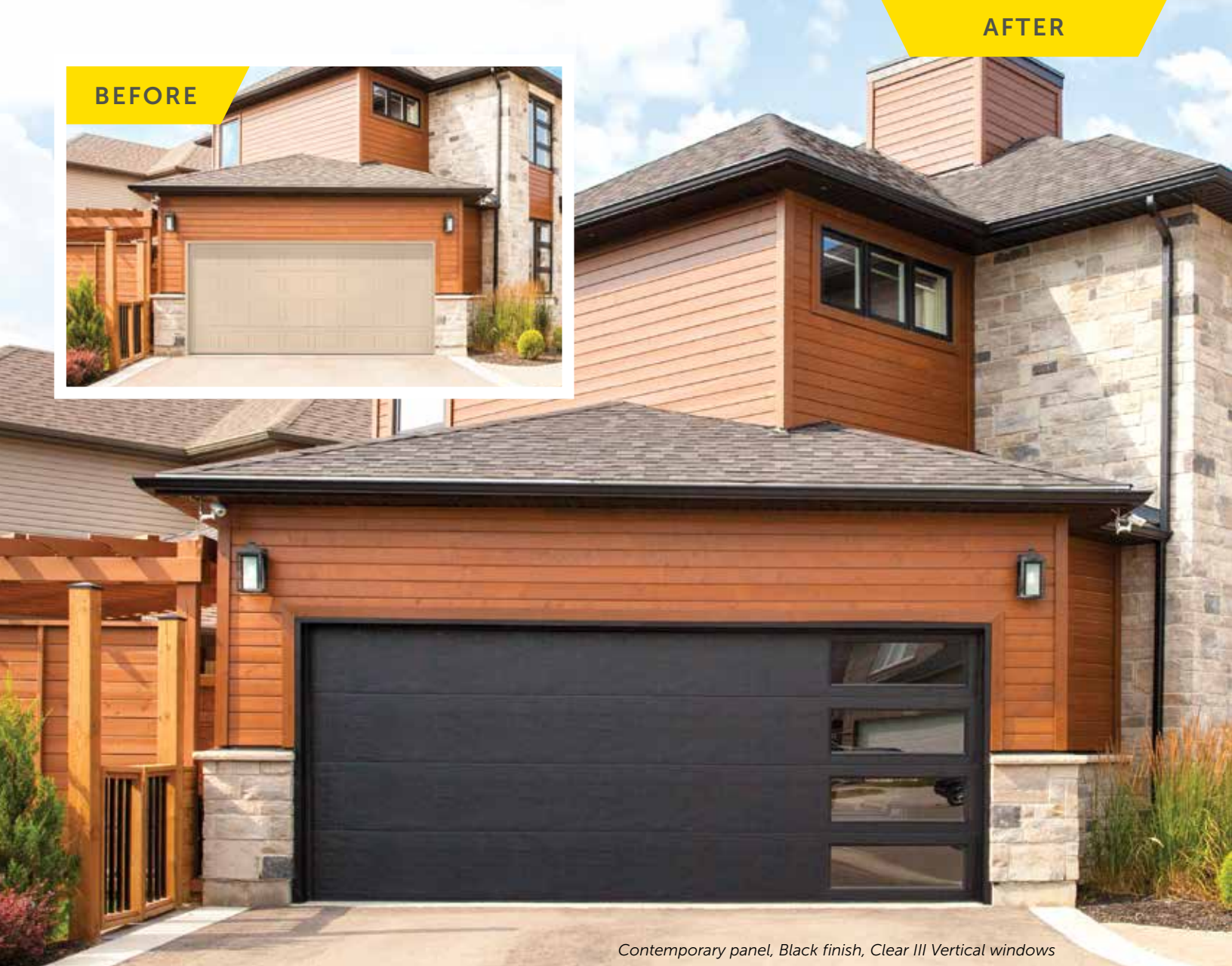
**4 Choose Your Hardware**



For our full decorative hardware offering, visit our website at [wayne-dalton.com](http://wayne-dalton.com).

AFTER

BEFORE



*Contemporary panel, Black finish, Clear III Vertical windows*



## Garage Door Design Center

To see this door on your home, visit [wayne-dalton.com](http://wayne-dalton.com), or download our Garage Door Design Center app. Upload a photo of your home and experiment with panel designs, color options, window styles and decorative hardware designs. Instant curb appeal awaits you with just a click of your mouse.

**Wayne Dalton**  
GARAGE DOORS

DISTRIBUTED BY:

2501 S. State Hwy. 121 Bus., Ste 200  
Lewisville, TX 75067

[wayne-dalton.com](http://wayne-dalton.com)



© 2020 Wayne Dalton, a Division of Overhead Door Corporation. Consistent with our policy of continuing product improvement, we reserve the right to change product specifications without notice or obligation. Item W900-1212 07/20