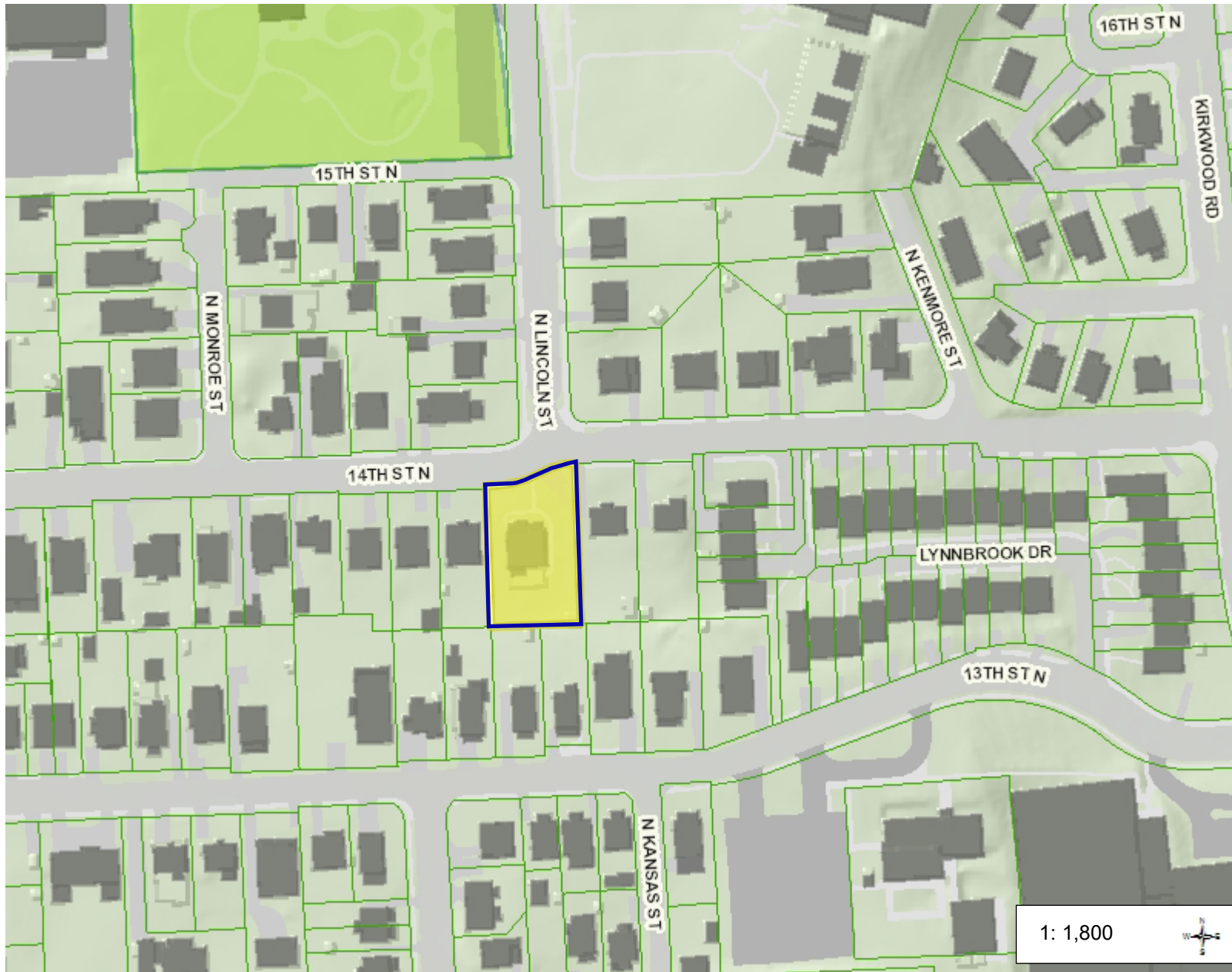


**Appendix One:  
Cartographic Records**

# Figure 1: Proposed Anderson House Historic District Boundary



**Legend**

- Historic District Boundary

**Notes:** The Historic District Boundary includes RPC(s): #15-081-026.

1: 1,800

0.1      0      0.03      0.1 Miles

NAD\_1983\_StatePlane\_Virginia\_North\_FIPS\_4501\_Feet  
 © Arlington County, VA. GIS Mapping Center

This map is a user generated static output from an Internet mapping site and is for reference only. Data layers that appear on this map may or may not be accurate, current, or otherwise reliable.

THIS MAP IS NOT TO BE USED FOR NAVIGATION



Figure 2: View of the Hayes property, ca. 1862 (spelled as “Hays” on map). Note that there are buildings and a small wooded area depicted on the property. The red arrow shows the approximate present-day location of the Anderson House.

Source: Corps of Engineers, “186X Detailed Map of Part of Virginia from Alexandria to the Potomac River above Washington, D.C.,” Library of Congress.



Figure 3: Survey compiled on January 1, 1862 and later updated on August 1, 1862. The red arrow shows the approximate present-day location of the Anderson House.

Source: J.J. Young and W. Hesselbach, *Map of N. Eastern Virginia and Vicinity of Washington*, District of Columbia: Division Headquarters of General Irvin McDowell, 1862, Library of Congress.



Figure 4: The red arrow points to the approximate present-day location of the Anderson House in 1865.

Source: Major General J.G. Barnard, *Map of the Environs of Washington compiled from Boschkes' Map of the District of Columbia and from Surveys of the U.S. Coast Survey showing the line of the Defences of Washington as Constructed During the War from 1861-1865 Inclusive*, 1865, Library of Congress.

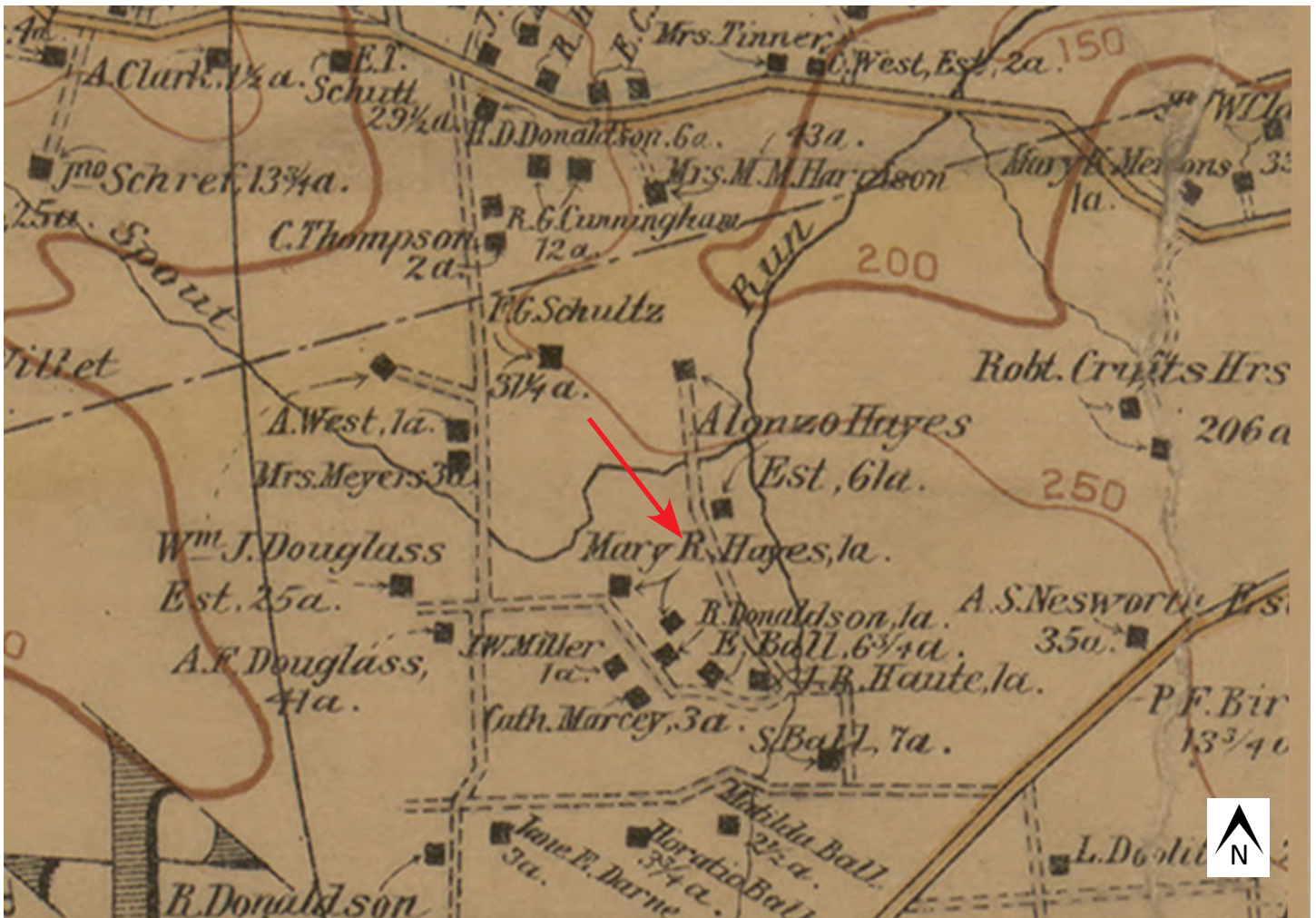


Figure 5: View of the Hayes property, 1894. Note that there are two buildings depicted on the approximately 66 acre property. The red arrow shows the approximate present-day location of the Anderson House.  
Source: Griffith M. Hopkins, "The Vicinity of Washington, D.C.," Library of Congress.

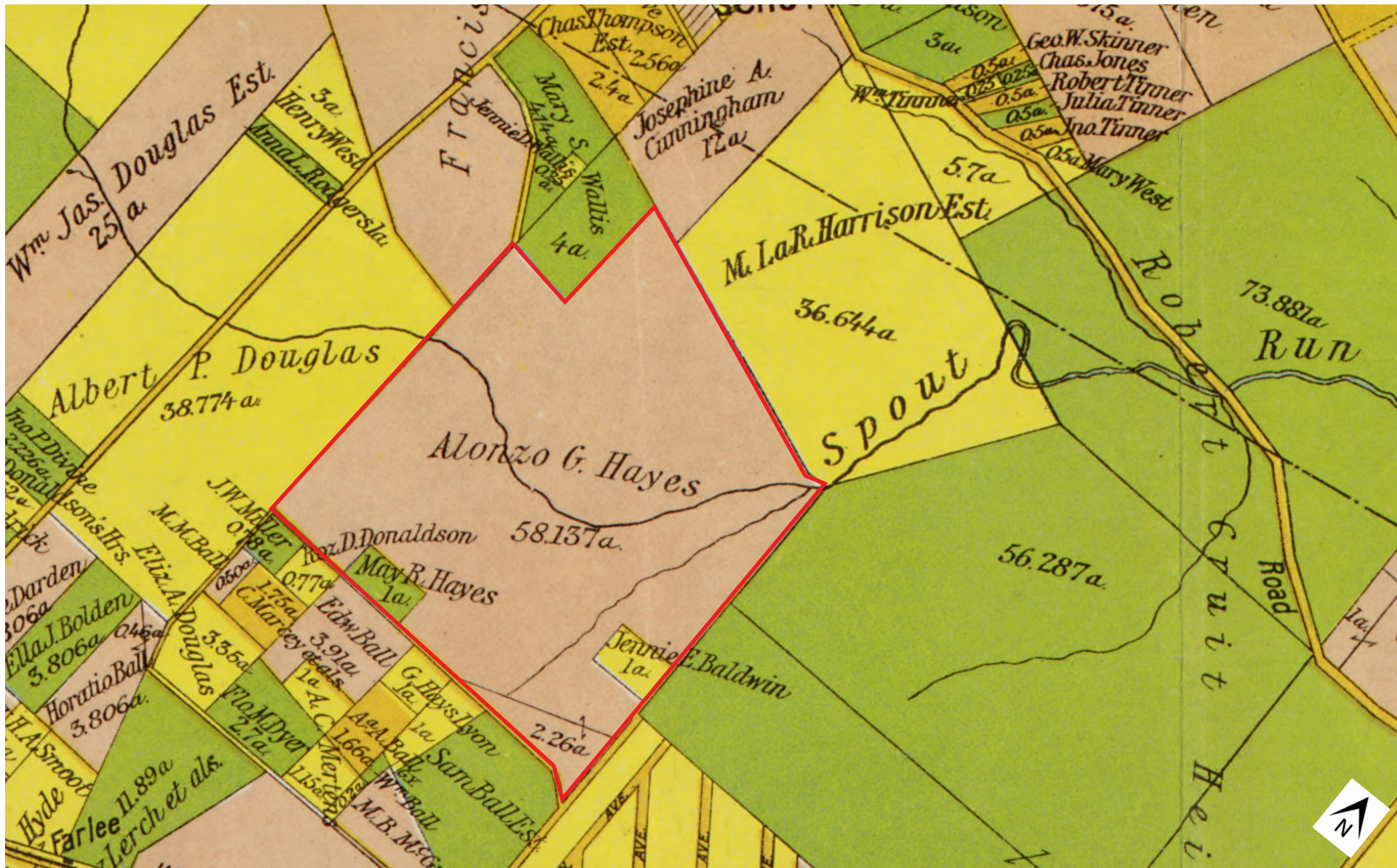


Figure 6: The red outline shows the approximately 66-acre property owned by William Hayes in 1900.  
 Source: Hopewell and Taylor, *Map of Alexandria County, Virginia for the Virginia Title Co.*, 1900, Library of Congress.





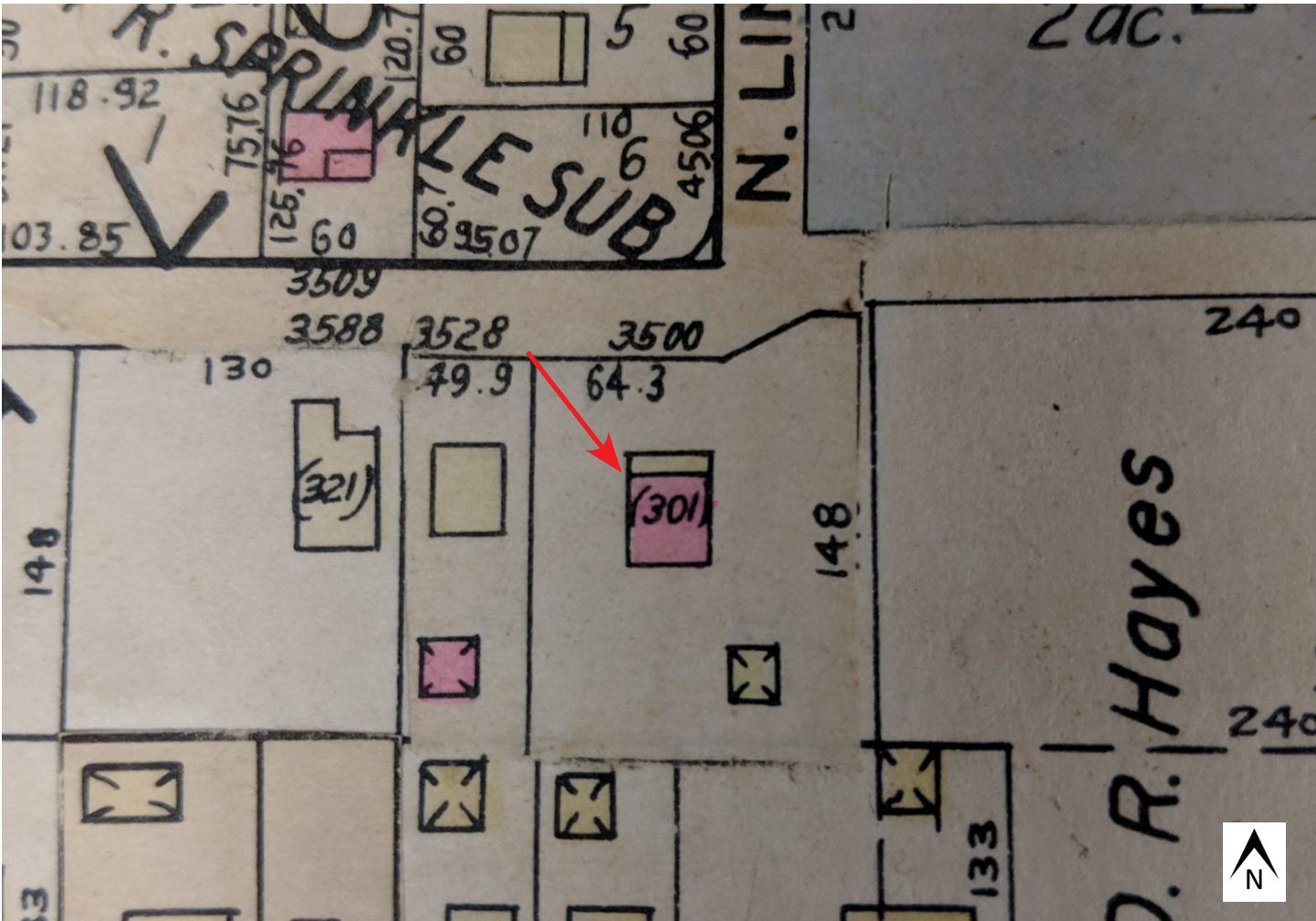


Figure 8: Franklin Survey Co. Map, Plate 3, 1935. The red arrow points to the Anderson House. The outbuilding was demolished by 1936.  
Source: Arlington County Preservation Office Archives.

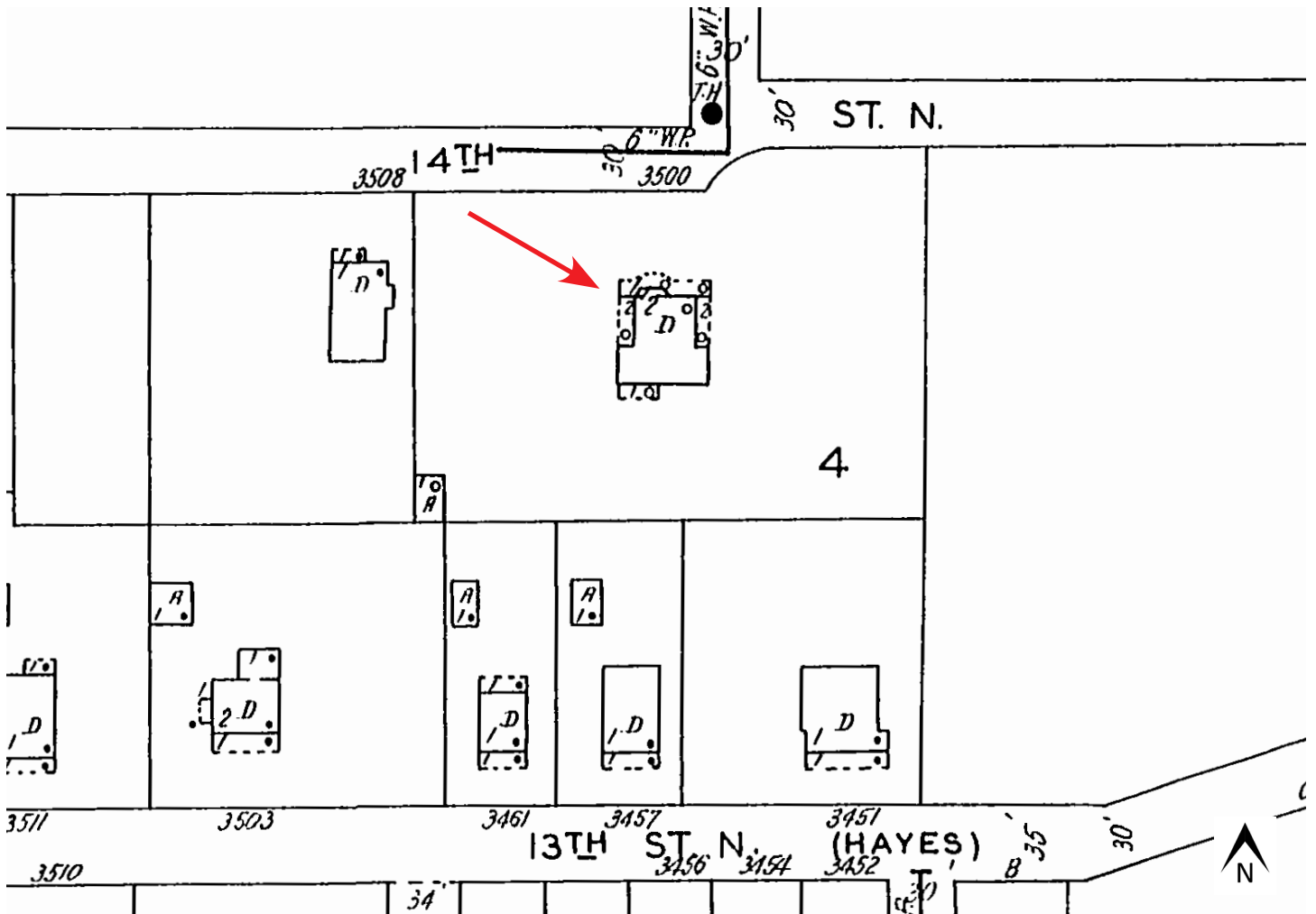


Figure 9: Sanborn Fire Insurance Map, Sheet 27, 1936. The red arrow points to the Anderson House. The garage at the southwestern portion of the property was constructed between 1935 and 1936. It remained on Lot 1 of the property after the 1950 subdivision and was demolished in 2018.

Source: Arlington County Preservation Office Archives.

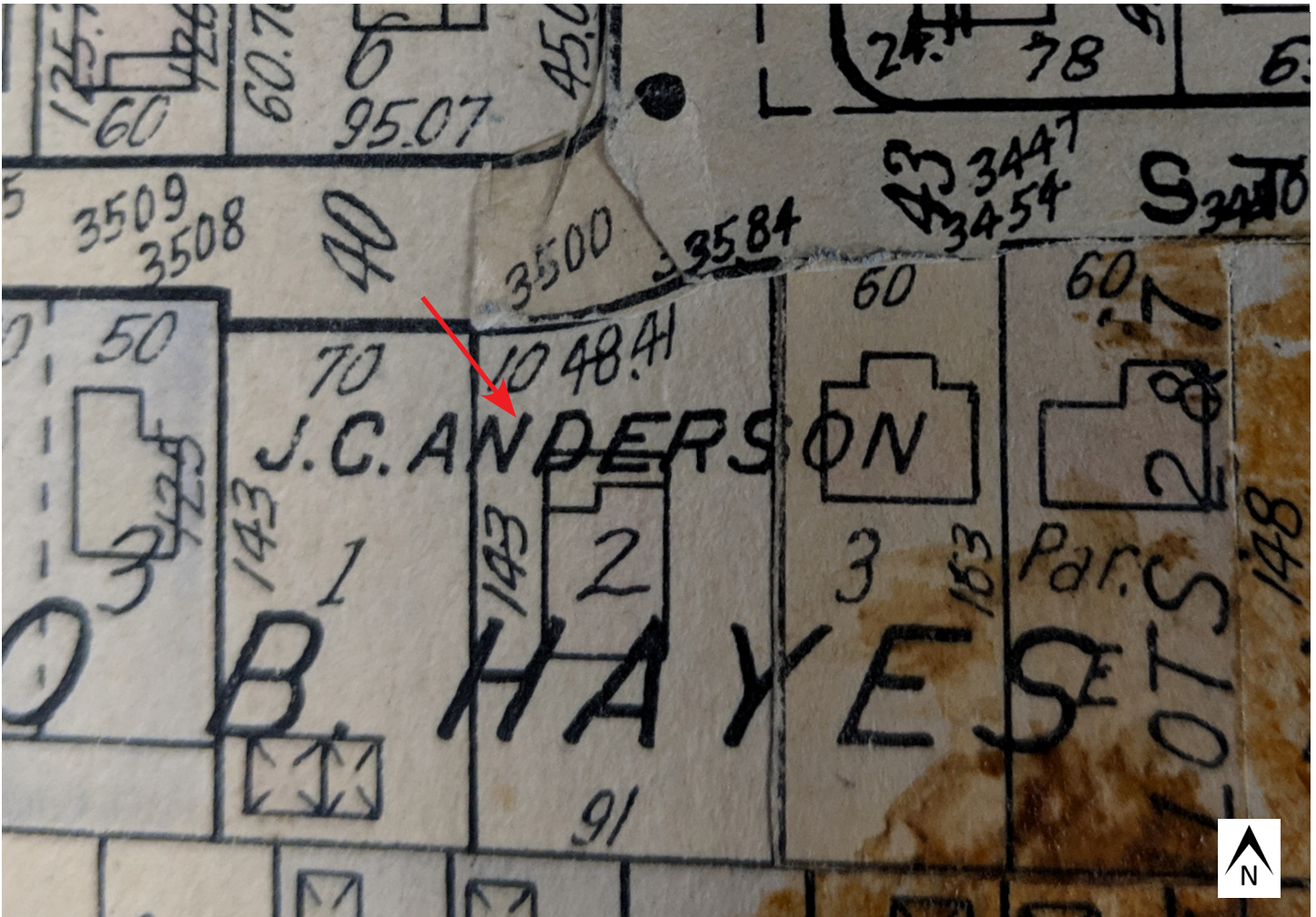


Figure 10: Franklin Survey Co. Map, Plate 16, 1952. The red arrow points to the Anderson House. The garage on lot 1 was built between 1935 and 1936 and was demolished in 2018. Source: Arlington County Preservation Office Archives.

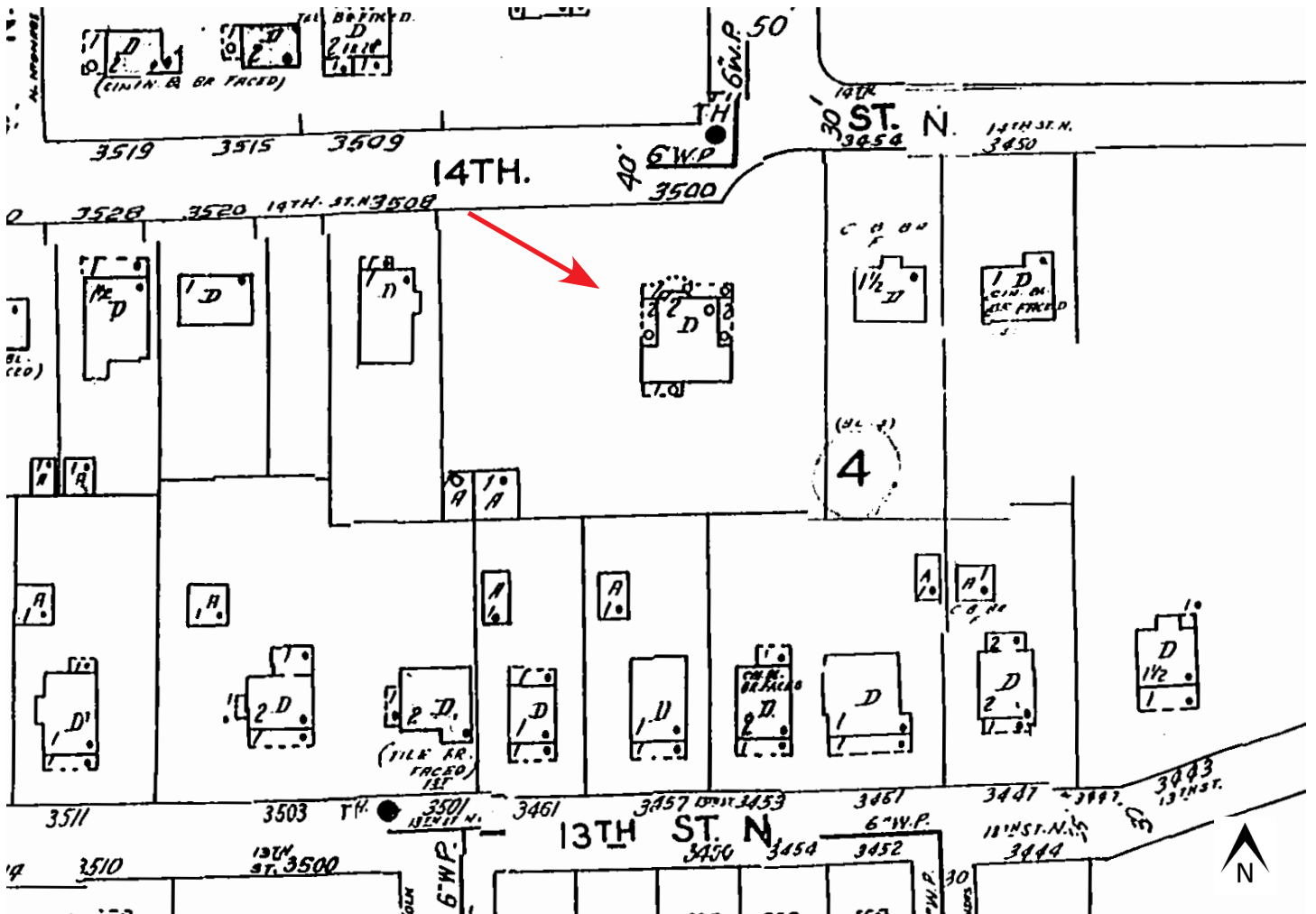


Figure 11: Sanborn Fire Insurance Map, Sheet 27, 1959. The red arrow points to the Anderson House. The map depicts the Lot 3 subdivision, but not the Lot 1 subdivision of the property. Lots 1, 2, and 3 were all subdivided by the Anderson heirs in 1950.

Source: Arlington County Preservation Office Archives.

**Appendix Two:  
Aerial Photographs**



Figure 1: ca. 1921 view of Clarendon looking southeast. The red arrow points to the Anderson House.  
Source: Library of Congress.



Figure 2: View of the Anderson House, 1934. The red arrow points to the House.  
Source: *Aerial Photographic Map of Arlington County, Virginia*. January 11, 1934, Sheet 32, Arlington County GIS.



Figure 3: View of the Anderson House, 1949. The red arrow points to the House.  
Source: "Historic Aerial Photographs," March 4, 1949, GS-FX-1, 104, Arlington County GIS.





Figure 4: View of the Anderson House, 1957. The red arrow points to the House.  
Source: "Historic Aerial Photographs," 1957, 15, Arlington County GIS.

**Appendix Three:  
Photos of Home Exterior**



Figure 1: North facade of the home at 3500 14th St. N. looking south.  
Source: Arlington County Historic Preservation Program, 2022.



Figure 2: North facade and west elevation of the home at 3500 14th St. N. looking southeast.  
Source: Arlington County Historic Preservation Program, 2022.



Figure 3: North facade and west elevation of the home at 3500 14th St. N. looking southeast.  
Source: Arlington County Historic Preservation Program, 2018.



Figure 4: North facade and east elevation of the home at 3500 14th St. N. looking southwest.  
Source: Arlington County Historic Preservation Program, 2016.



Figure 5: North facade and east elevation of the home at 3500 14th St. N. looking southwest.  
Source: Arlington County Historic Preservation Program, 2022.



Figure 6: East elevation of the home at 3500 14th St. N. looking southeast with 2016 addition visible in rear.  
Source: Arlington County Historic Preservation Program, 2022.





Figure 7: South and east elevations of the home at 3500 14th St. N. looking northwest at 2016 addition. Source: Arlington County Historic Preservation Program, 2018.



Figure 8: South and west elevations of the home at 3500 14th St. N. looking northeast at 2016 addition.  
Source: Arlington County Historic Preservation Program, 2018.



Figure 9: South and west elevations with completed addition and pergola at 3500 14th St. N. looking northeast. Source: Arlington County Historic Preservation Program, 2022.



Figure 10: West elevation of the home at 3500 14th St. N. looking northeast after completion of 2016 addition. Source: Arlington County Historic Preservation Program, 2022.



Figure 11: Non-historic shed at 3500 14th St. N. looking south.  
Source: Arlington County Historic Preservation Program, 2022.



Figure 12: Detail of bullnose radial brick column at 3500 14th St. N. looking southwest.  
Source: Arlington County Historic Preservation Program, 2016.



Figure 13: Detail of bullnose radial brick at 3500 14th St. N. looking south.  
Source: Arlington County Historic Preservation Program, 2016.



Figure 14: Detail of front porch at 3500 14th St. N. looking southwest.  
Source: Arlington County Historic Preservation Program, 2022.





Figure 15: South elevation before 2016 addition of home at 3500 14th St. N. looking north.

Source: Arlington County Historic Preservation Program, 2016.