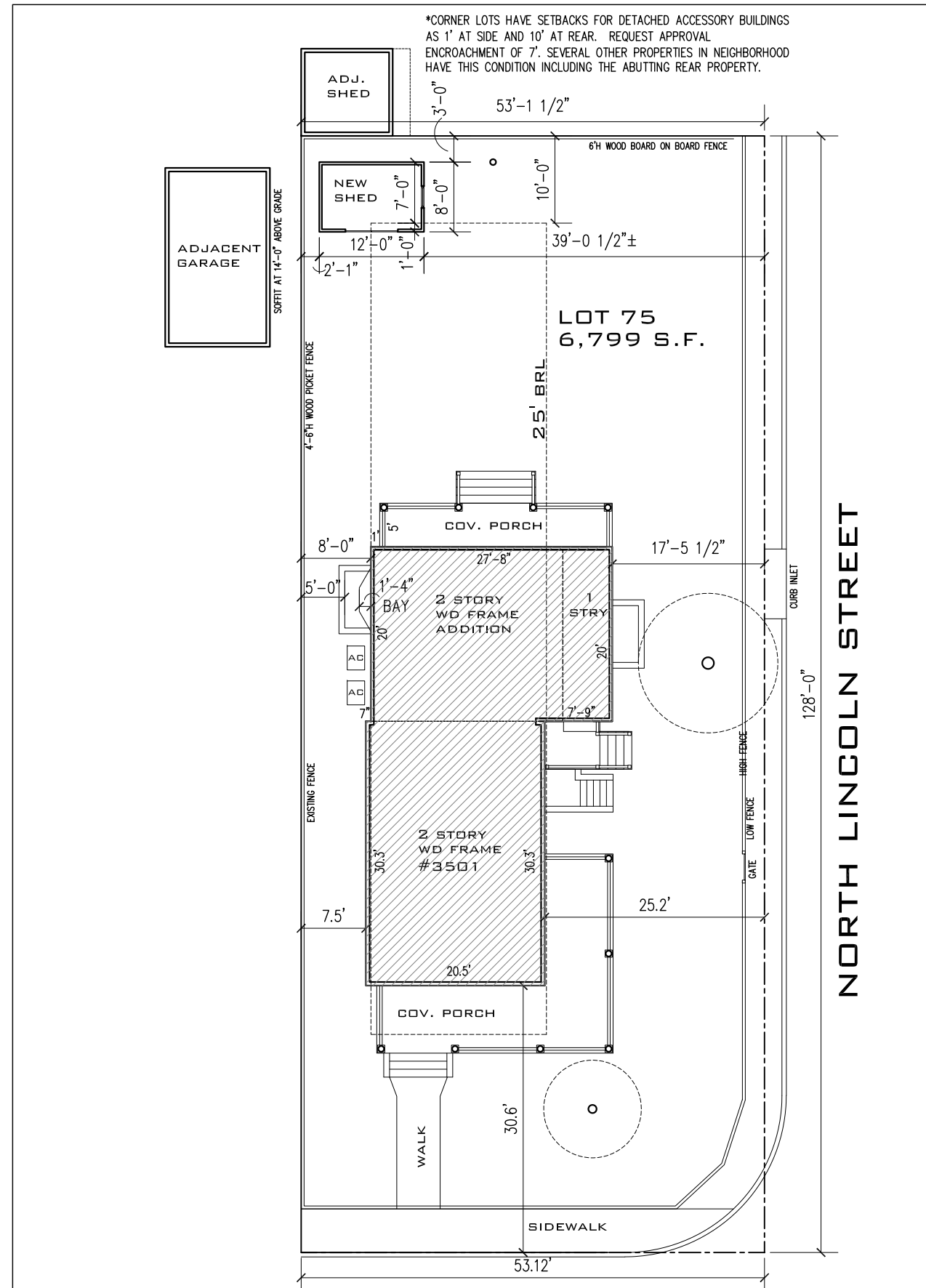


EXISTING SITE PLAN
 Scale: 1/16" = 1'-0"



NEW SITE PLAN
 Scale: 1/16" = 1'-0"

**FITZHARRIS
 DESIGNS**
 ARCHITECTS + DESIGNERS

Heidi FitzHarris, AIA
 3623 North 21st Avenue
 Arlington, VA 22207
 703.598.9318
 heidi@fitzharrisdesigns.com
 www.fitzharrisdesigns.com

SWENNES RESIDENCE
 3501 North 21st Avenue
 Arlington, VA 22207
 Renovation

Issue:	Date:
DRC	2021.03.24
DRC/HALRB	2022.06.21

NEW PLANS

A001



**FITZHARRIS
DESIGNS**
ARCHITECTS + DESIGNERS

Heidi FitzHarris, AIA
3623 North 21st Avenue
Arlington, VA 22207
703.598.9318
heidi@fitzharrisdesigns.com
www.fitzharrisdesigns.com

SWENNES RESIDENCE
3501 North 21st Avenue
Arlington, VA 22207
Renovation

Issue: Date:
DRC 2021.03.24

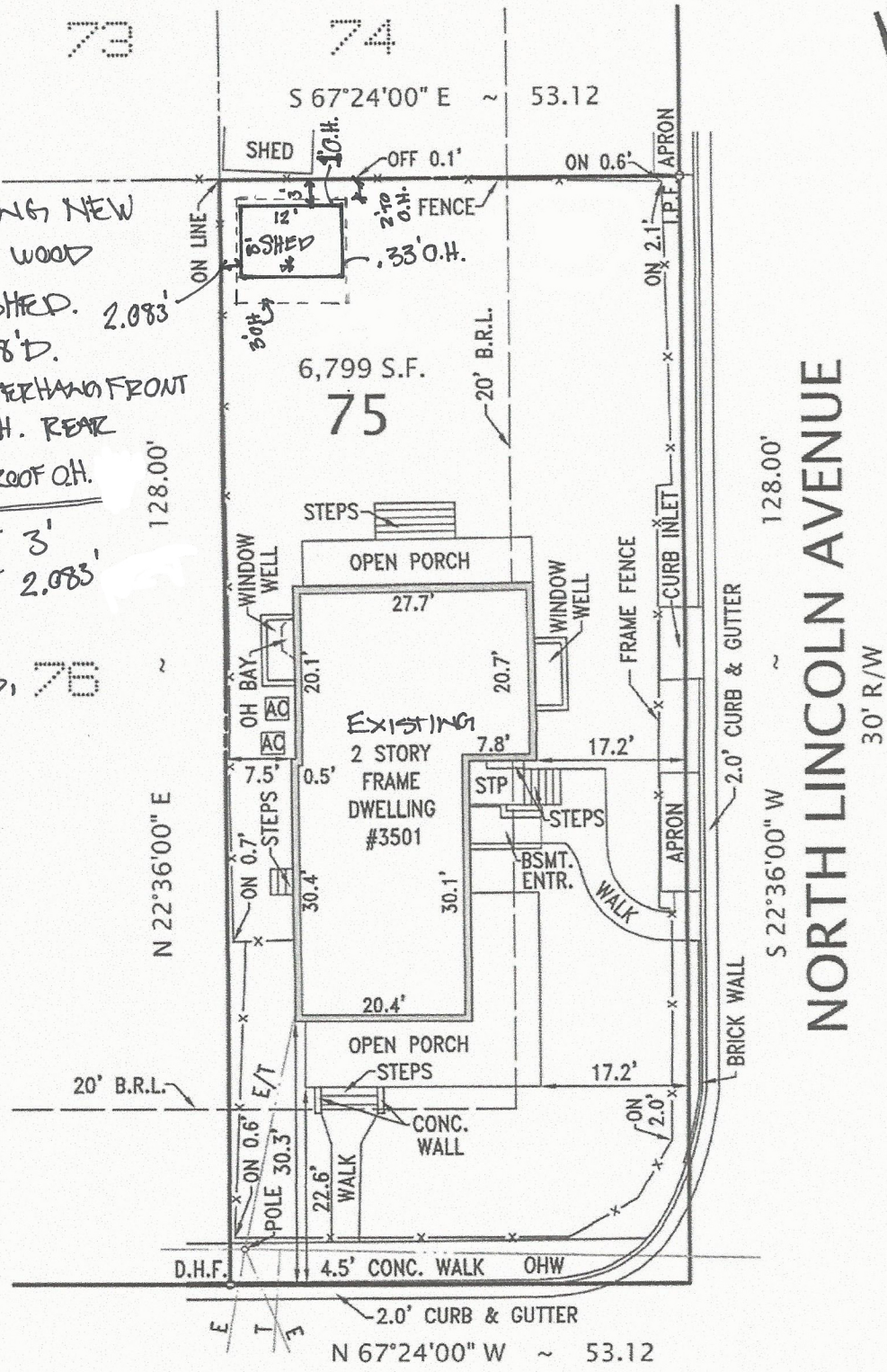
EX. PHOTOGRAPHS

A001PH

NOTE: FENCES ARE PICKET UNLESS NOTED.

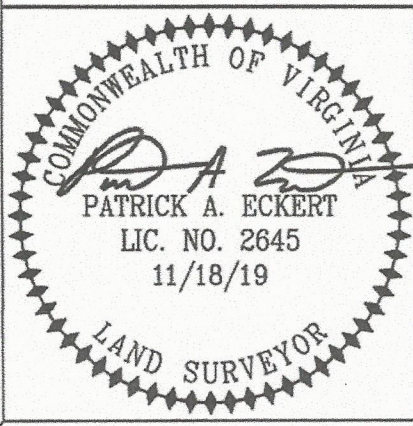
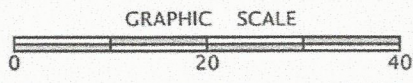
COPYRIGHT ALTERRA SURVEYS, INC. - THIS IS A SERVICE DOCUMENT AND IS VALID FOR SIX MONTHS FROM DATE ISSUED.

*REQUESTING NEW
 1 STORY WOOD
 FRAME SHED.
 12' W X 8' D.
 3' ROOF OVERHANG FRONT
 1' ROOF O.H. REAR
 .33' or 4" ROOF O.H.
 REAR OFFSET 3'
 SIDE OFFSET 2.083'
 DRAWN BY
 HEIDI FITZPATRICK, MA
 2021.12.16



21st AVENUE NORTH 30' R/W

PLAT
 SHOWING HOUSE LOCATION ON
 LOT 75
 2ND ADDITION TO
MAYWOOD
 ARLINGTON COUNTY, VIRGINIA
 SCALE: 1" = 20' NOVEMBER 4, 2019

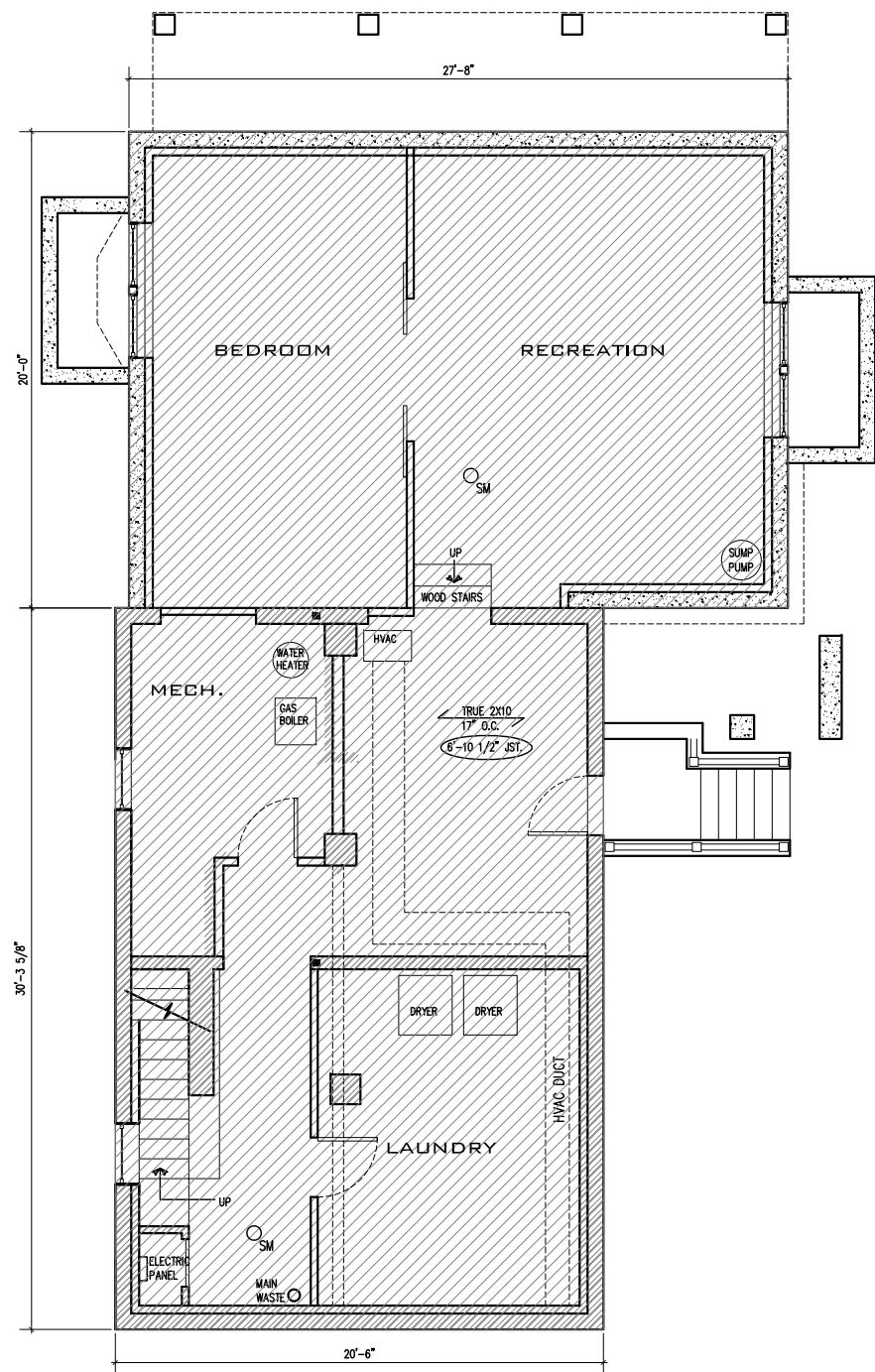


THE POSITION OF THE EXISTING IMPROVEMENTS HAS BEEN ESTABLISHED BY AN ON SITE INSTRUMENT SURVEY AND UNLESS OTHERWISE SHOWN THERE ARE NO VISIBLE ENCROACHMENTS.

PLAT PREPARED WITHOUT THE BENEFIT OF A TITLE REPORT. THIS PLAT IS SUBJECT TO RESTRICTIONS AND EASEMENTS OF RECORD OR ESTABLISHED. NO CORNER MARKERS SET.

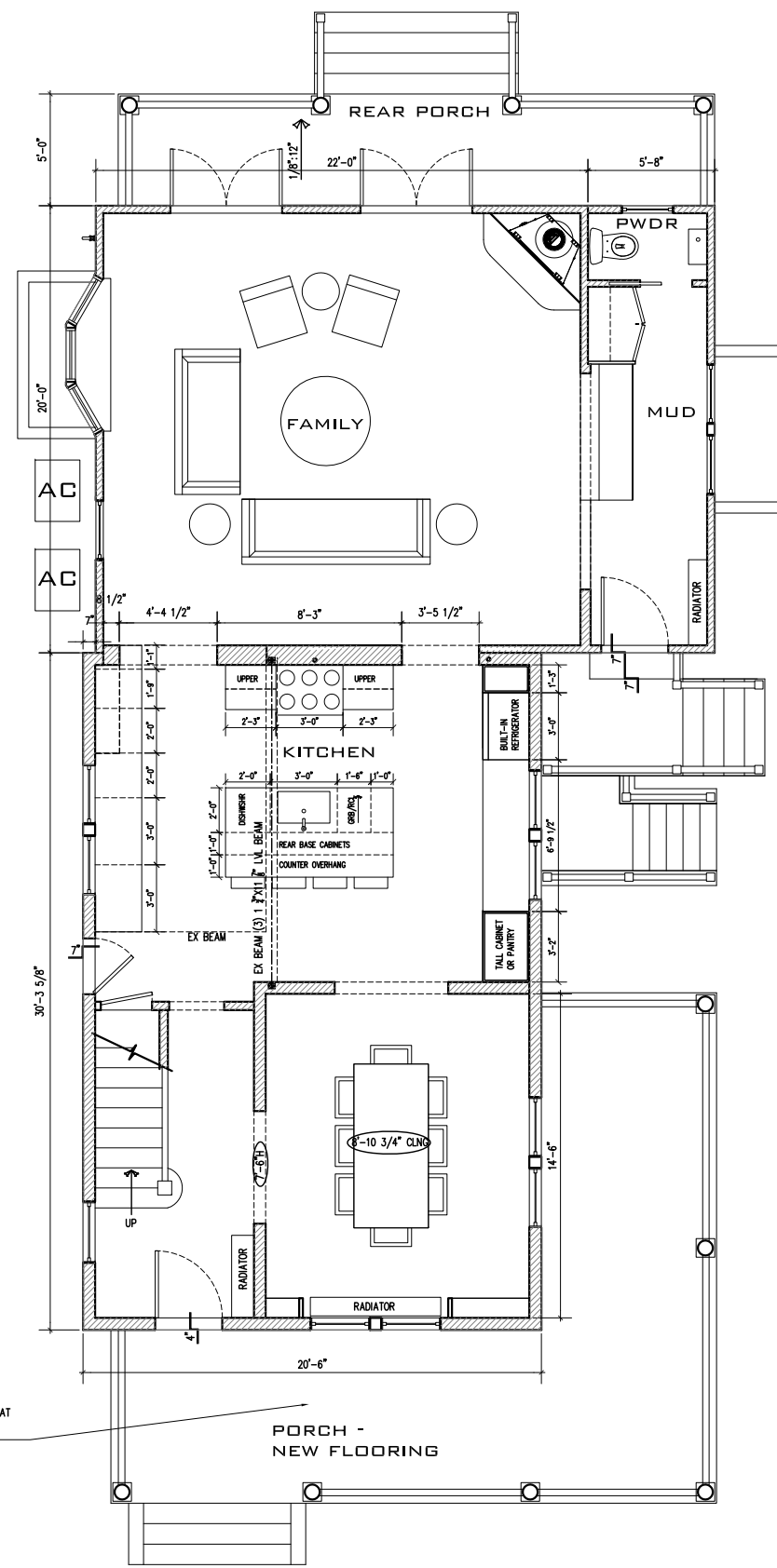
CASE NAME:
 DEVINE ~ SWENNES
 ORDERED BY:
 KVS TITLE, LLC

ALTERRA SURVEYS, INC.
 11350 RANDOM HILLS ROAD #430
 FAIRFAX, VIRGINIA 22030
 TEL. NO. 703-520-1558
 FAX NO. 703-995-4800
 INBOX@ALTERRASURVEYS.COM



NEW SECOND FLOOR PLAN

Scale: 1/8" = 1'-0"



NEW FIRSTFLOOR PLAN

Scale: 1/8" = 1'-0"



**FITZHARRIS
DESIGNS**
ARCHITECTS + DESIGNERS

Heidi FitzHarris, AIA
3623 North 21st Avenue
Arlington, VA 22207
703.598.9318
heidl@fitzharrisdesigns.com
www.fitzharrisdesigns.com

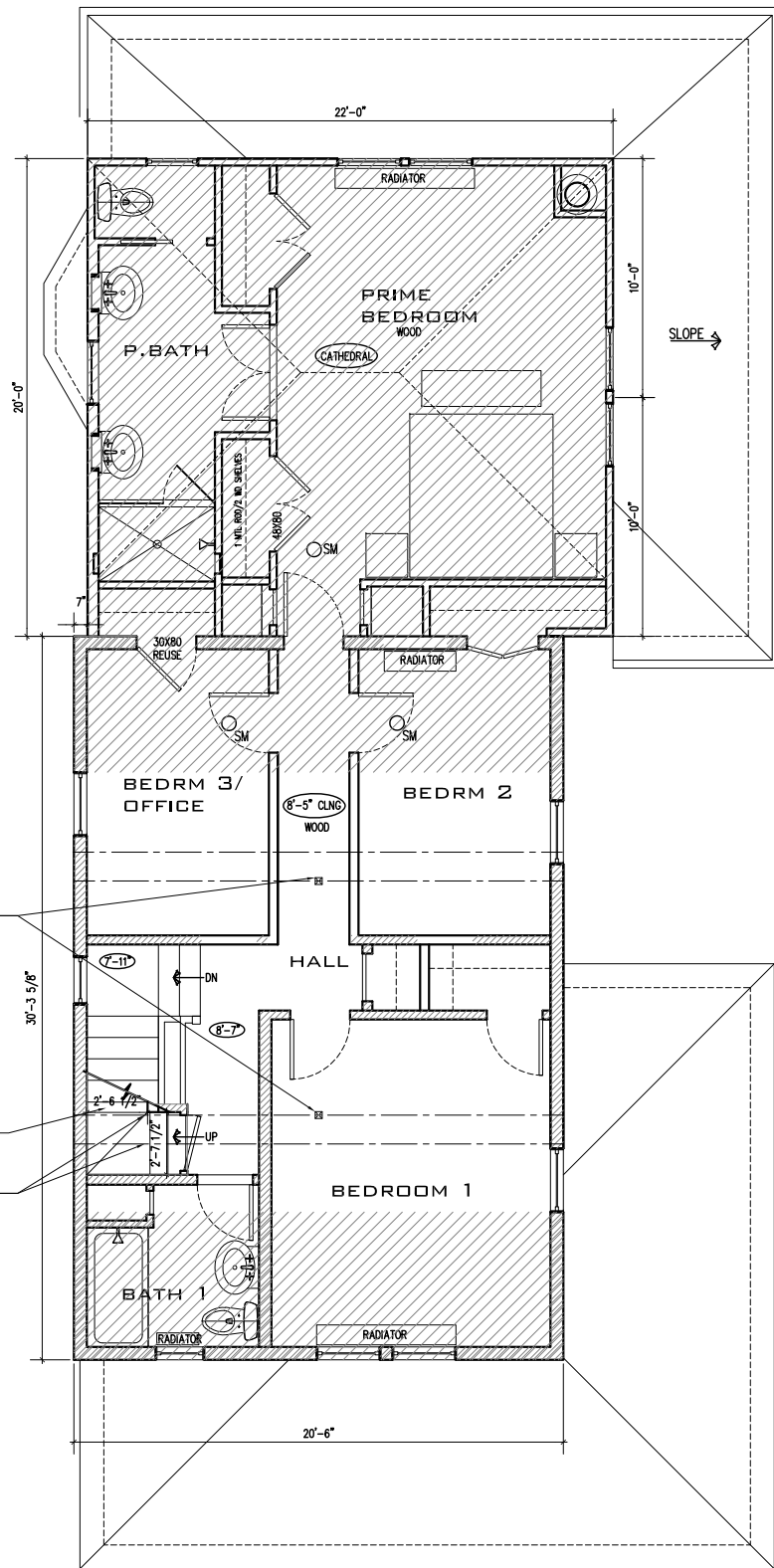
SWENNES RESIDENCE

3501 North 21st Avenue
Arlington, VA 22207
Renovation

Issue:	Date:
DRC	2021.03.24
DRC/HALRB	2022.06.21

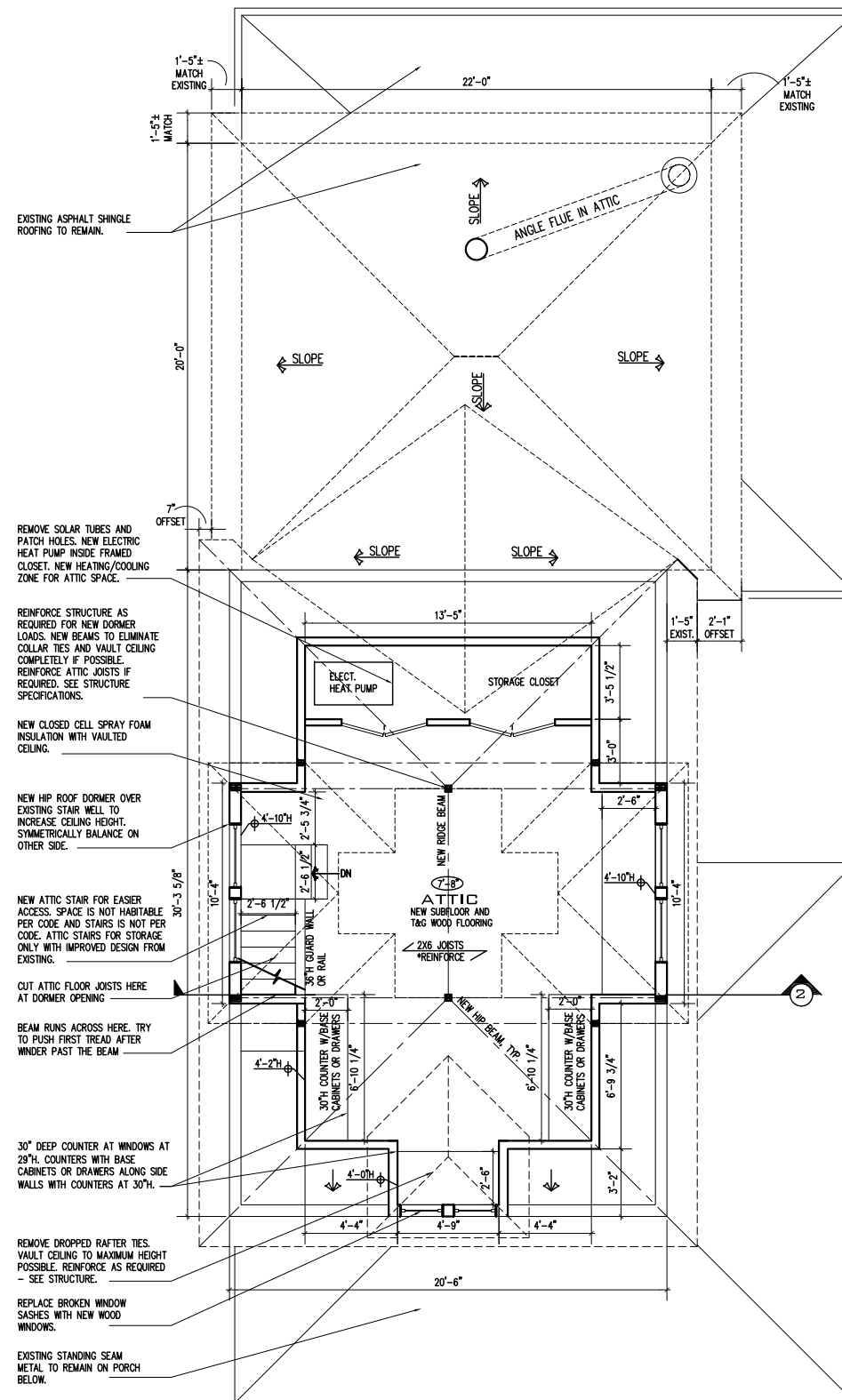
NEW PLANS

A101



NEW SECOND FLOOR PLAN

Scale: 1/8" = 1'-0"



NEW THIRD LEVEL ATTIC PLAN

Scale: 1/8" = 1'-0"



**FITZHARRIS
DESIGNS**
ARCHITECTS + DESIGNERS

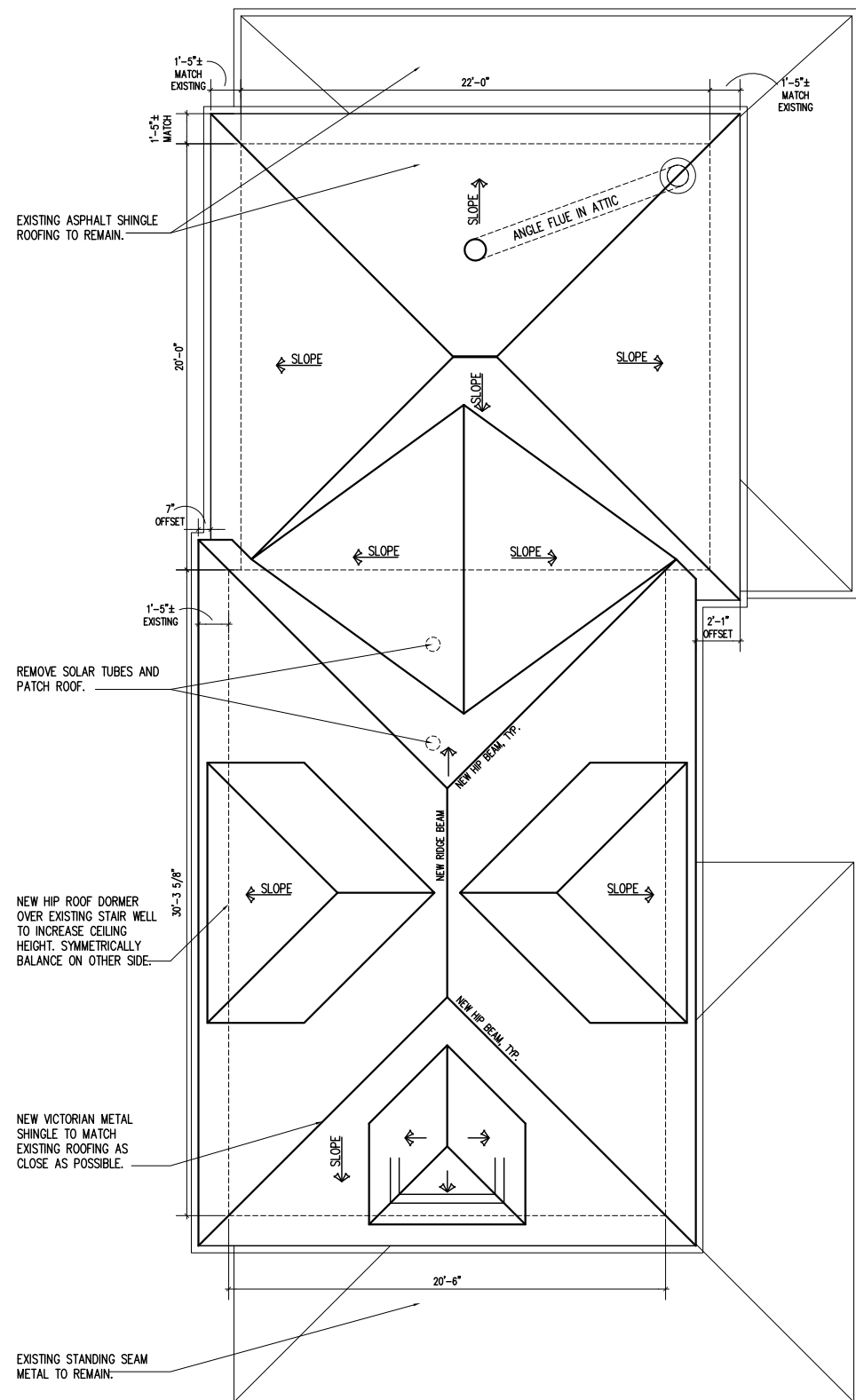
Heidi FitzHarris, AIA
3623 North 21st Avenue
Arlington, VA 22207
703.598.9318
heidl@fitzharrisdesigns.com
www.fitzharrisdesigns.com

SWENNES RESIDENCE
3501 North 21st Avenue
Arlington, VA 22207
Renovation

Issue:	Date:
DRC	2021.03.24
DRC/HALRB	2022.06.21

NEW PLANS

A102



NEW ROOF PLAN

Scale: 1/8" = 1'-0"



**FITZHARRIS
DESIGNS**
ARCHITECTS + DESIGNERS

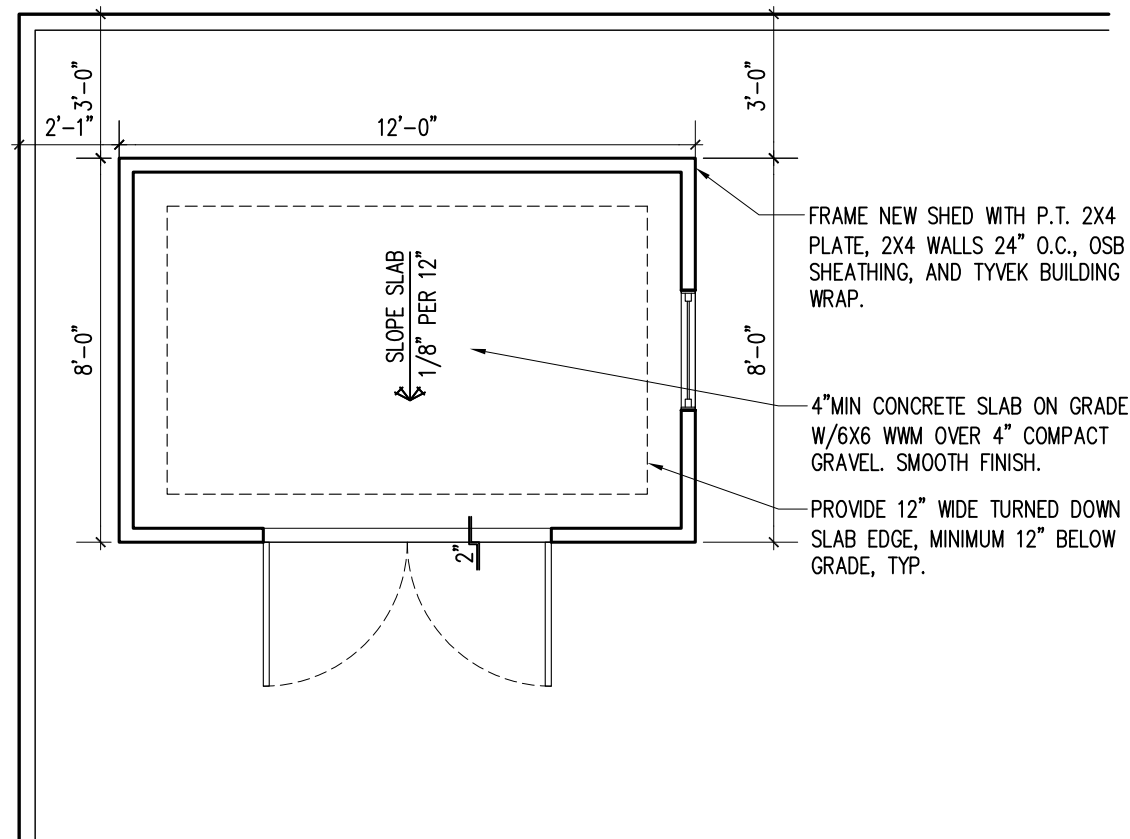
Heidi FitzHarris, AIA
3623 North 21st Avenue
Arlington, VA 22207
703.598.9318
heidi@fitzharrisdesigns.com
www.fitzharrisdesigns.com

SWENNES RESIDENCE
3501 North 21st Avenue
Arlington, VA 22207
Renovation

Issue:	Date:
DRC	2021.03.24
DRC/HALRB	2022.06.21

NEW PLANS

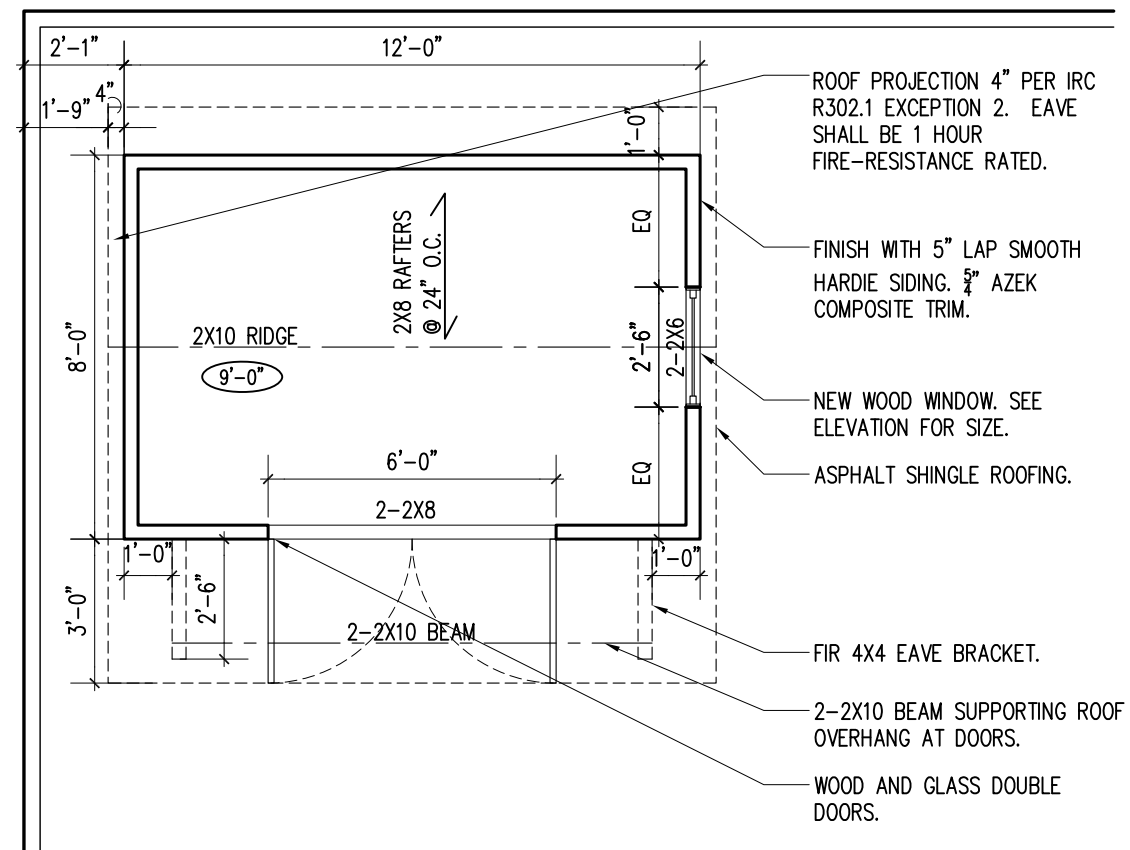
A103



- FRAME NEW SHED WITH P.T. 2X4 PLATE, 2X4 WALLS 24" O.C., OSB SHEATHING, AND TYVEK BUILDING WRAP.
- 4" MIN CONCRETE SLAB ON GRADE W/6X6 W/M OVER 4" COMPACT GRAVEL. SMOOTH FINISH.
- PROVIDE 12" WIDE TURNED DOWN SLAB EDGE, MINIMUM 12" BELOW GRADE, TYP.

NEW SHED FOUNDATION PLAN

Scale: 1/4" = 1'-0"



- ROOF PROJECTION 4" PER IRC R302.1 EXCEPTION 2. EAVE SHALL BE 1 HOUR FIRE-RESISTANCE RATED.
- FINISH WITH 5" LAP SMOOTH HARDIE SIDING. 5/8" AZEK COMPOSITE TRIM.
- NEW WOOD WINDOW. SEE ELEVATION FOR SIZE.
- ASPHALT SHINGLE ROOFING.
- FIR 4X4 EAVE BRACKET.
- 2-2X10 BEAM SUPPORTING ROOF OVERHANG AT DOORS.
- WOOD AND GLASS DOUBLE DOORS.

NEW SHED FRAMING PLAN

Scale: 1/4" = 1'-0"

**FITZHARRIS
DESIGNS**
ARCHITECTS + DESIGNERS

Heidi FitzHarris, AIA
3623 North 21st Avenue
Arlington, VA 22207
703.598.9318
heidi@fitzharrisdesigns.com
www.fitzharrisdesigns.com

SWENNES RESIDENCE
3501 North 21st Avenue
Arlington, VA 22207
Renovation

Issue:	Date:
DRC	2021.03.24
DRC/HALRB	2022.06.21

NEW PLANS

A104

EXISTING WINDOWS ARE ROTTEN AND BROKEN.

EXISTING STANDING SEAM METAL TO REMAIN.

ORIGINAL WOOD T&G PAINTED PINE FLOORING IS ROTTING. REMOVE AND PREPARE TO REPLACE.

PROPERTY LINE

31'-2" ± AT GRADE



EXISTING SOUTH FRONT ELEVATION

Scale: 1/4" = 1'-0"

**FITZHARRIS
DESIGNS**
ARCHITECTS + DESIGNERS

Heidi FitzHarris, AIA
3623 North 21st Avenue
Arlington, VA 22207
703.598.9318
heid@fitzharrisdesigns.com
www.fitzharrisdesigns.com

SWENNES RESIDENCE

3501 North 21st Avenue
Arlington, VA 22207

Renovation

Issue:

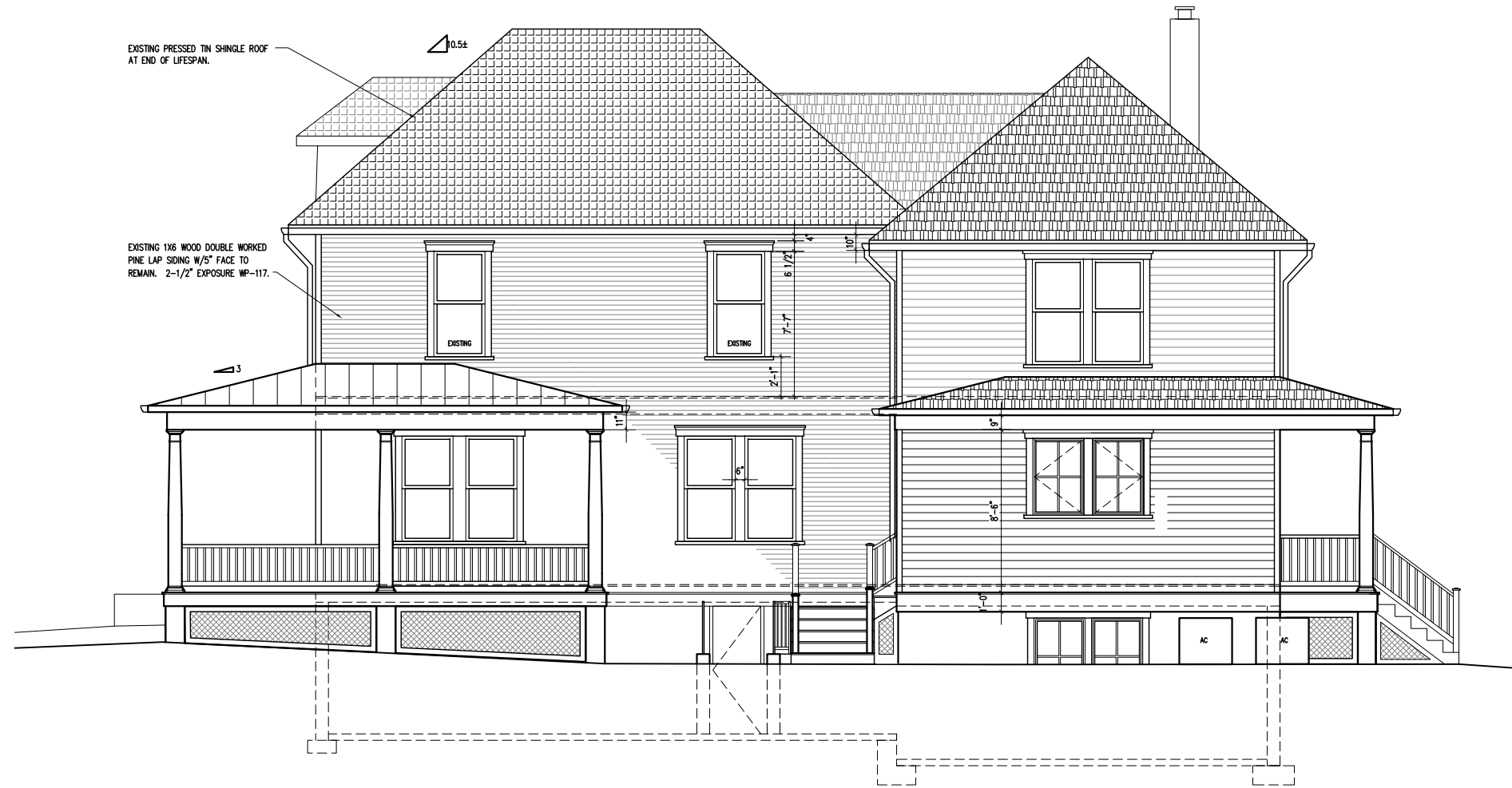
Date:

DRC
DRC/HALRB

2021.03.24
2022.06.21

EX. ELEVATIONS

A201



EXISTING EAST SIDE ELEVATION

Scale: 1/8" = 1'-0"



EXISTING WEST SIDE ELEVATION

Scale: 1/8" = 1'-0"

© COPYRIGHT 2021 ALL RIGHTS RESERVED. ALL IDEAS AND DESIGNS INDICATED BY THESE DRAWINGS AND SPECIFICATIONS ARE THE PROPERTY AND COPYRIGHT OF FITZHARRIS DESIGNS, LLC.

**FITZHARRIS
DESIGNS**
ARCHITECTS + DESIGNERS

Heidi FitzHarris, AIA
3623 North 21st Avenue
Arlington, VA 22207
703.598.9318
heid@fitzharrisdesigns.com
www.fitzharrisdesigns.com

SWENNES RESIDENCE

3501 North 21st Avenue
Arlington, VA 22207
Renovation

Issue:	Date:
DRC	2021.03.24
DRC/HALRB	2022.06.21

EX. ELEVATIONS

A202

NEW HIP ROOF DORMER OVER EXISTING STAIR WELL TO INCREASE CEILING HEIGHT. SYMMETRICALLY BALANCE ON OTHER SIDE.

REPAIR/REPLACE WOOD WINDOWS IN SAME SIZE.

NEW VICTORIAN METAL SHINGLE TO MATCH EXISTING ROOFING AS CLOSE AS POSSIBLE.

EXISTING STANDING SEAM METAL TO REMAIN.

NEW IPE T&G WOOD FLOORING AT 3 1/2" W X 3/4" THICK. FINISH WITH MESSMER'S OIL.



NEW SOUTH FRONT ELEVATION

Scale: 1/4" = 1'-0"

**FITZHARRIS
DESIGNS**

ARCHITECTS + DESIGNERS

Heidi FitzHarris, AIA
3623 North 21st Avenue
Arlington, VA 22207
703.598.9318
heid@fitzharrisdesigns.com
www.fitzharrisdesigns.com

SWENNES RESIDENCE

3501 North 21st Avenue
Arlington, VA 22207
Renovation

Issue:	Date:
DRC	2021.03.24
DRC/HALRB	2022.06.21

NEW ELEVATIONS

A203



NEW EAST SIDE ELEVATION

Scale: 1/8" = 1'-0"



NEW WEST SIDE ELEVATION

Scale: 1/8" = 1'-0"

**FITZHARRIS
DESIGNS**
ARCHITECTS + DESIGNERS

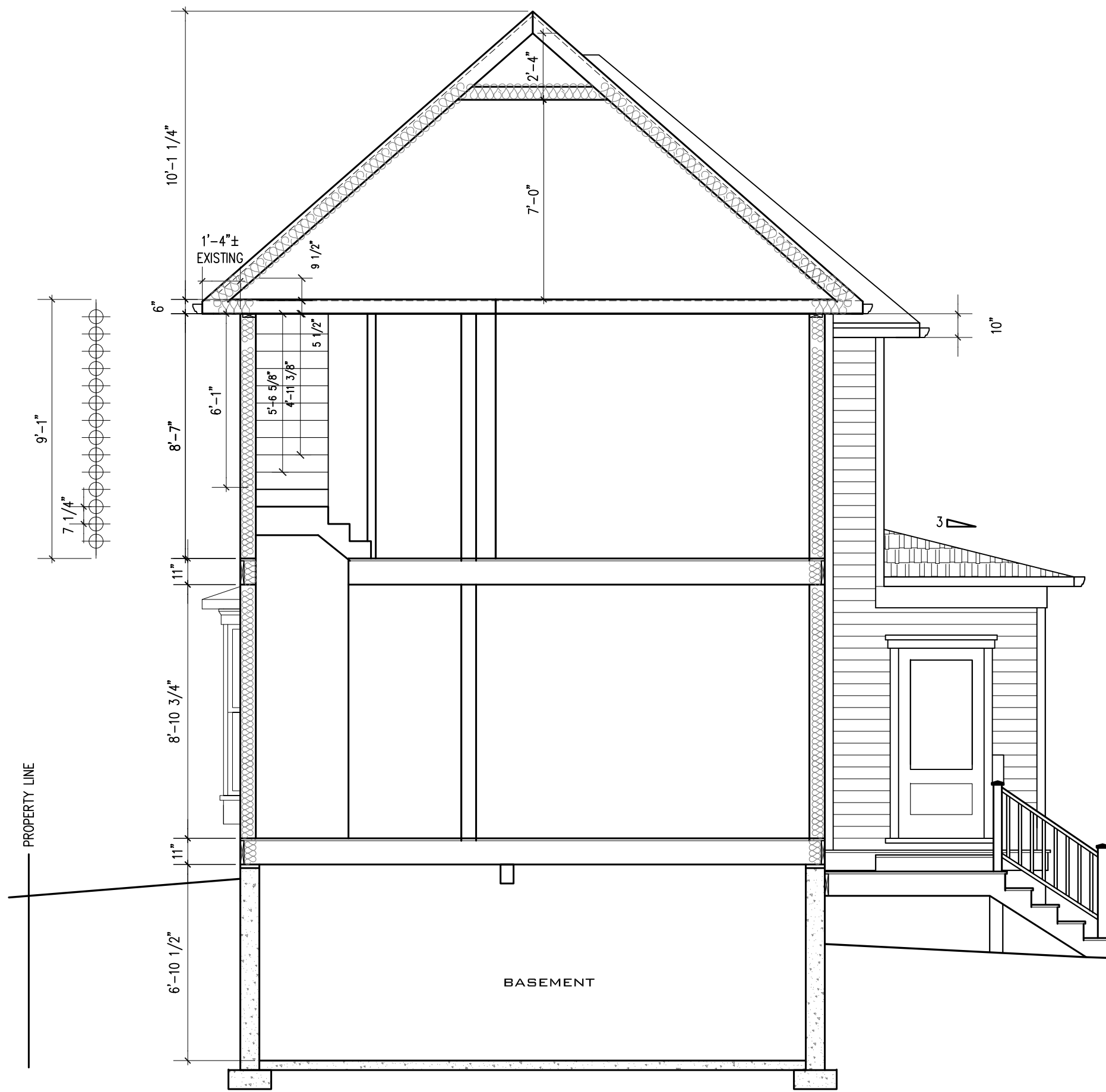
Heidi FitzHarris, AIA
3623 North 21st Avenue
Arlington, VA 22207
703.598.9318
heid@fitzharrisdesigns.com
www.fitzharrisdesigns.com

SWENNES RESIDENCE
3501 North 21st Avenue
Arlington, VA 22207
Renovation

Issue:	Date:
DRC	2021.03.24
DRC/HALRB	2022.06.21

NEW ELEVATIONS

A204



1 - EXISTING SECTION AT STAIRS
 Scale: 1/4" = 1'-0"

**FITZHARRIS
 DESIGNS**
 ARCHITECTS + DESIGNERS

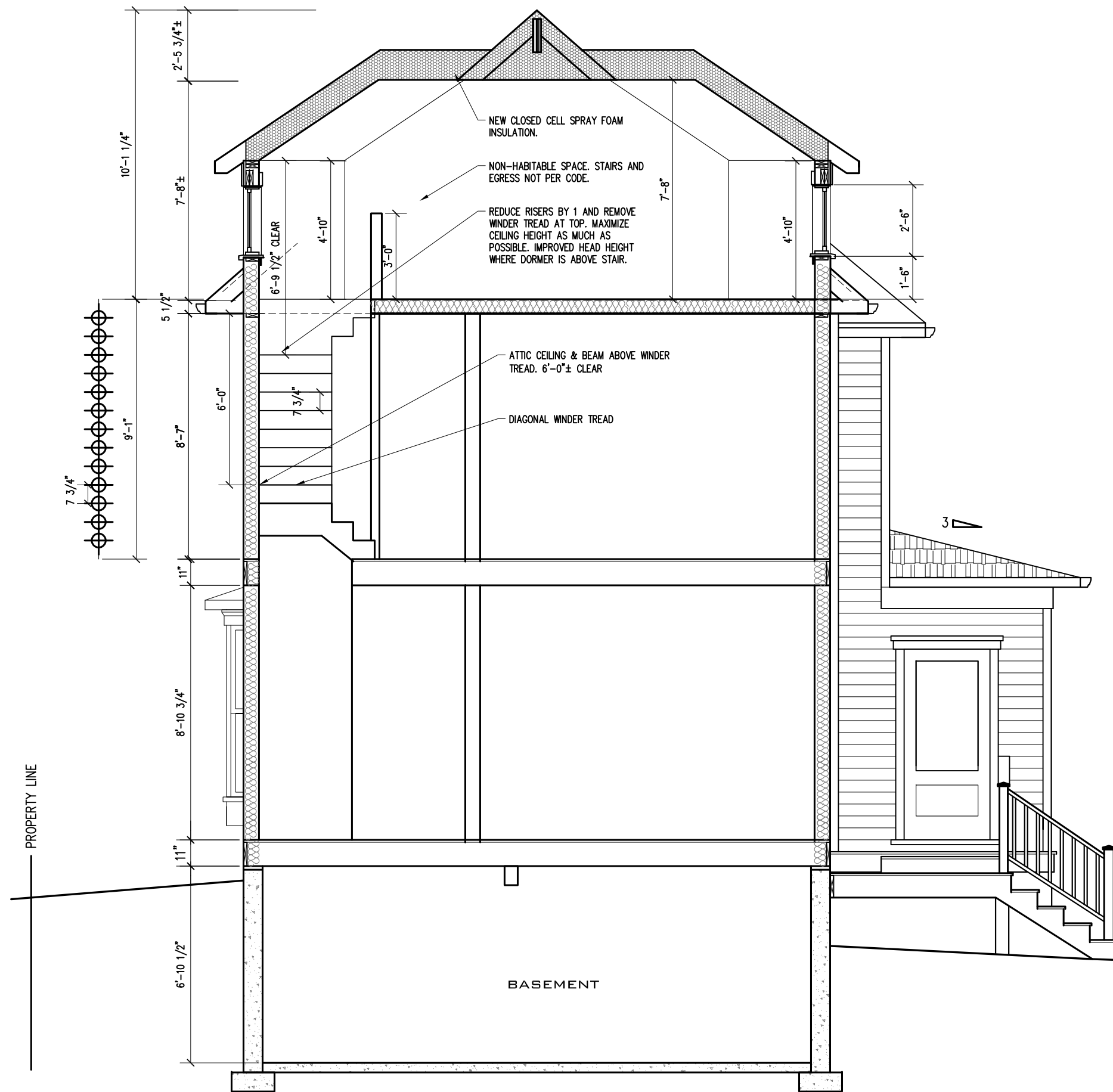
Heidi FitzHarris, AIA
 3623 North 21st Avenue
 Arlington, VA 22207
 703.598.9318
 heidi@fitzharrisdesigns.com
 www.fitzharrisdesigns.com

SWENNES RESIDENCE
 3501 North 21st Avenue
 Arlington, VA 22207
 Renovation

Issue:	Date:
DRC	2021.03.24
DRC/HALRB	2022.06.21

SECTIONS

A205



2 - NEW SECTION AT STAIRS

Scale: 1/4" = 1'-0"

**FITZHARRIS
DESIGNS**
ARCHITECTS + DESIGNERS

Heidi FitzHarris, AIA
3623 North 21st Avenue
Arlington, VA 22207
703.598.9318
heid@fitzharrisdesigns.com
www.fitzharrisdesigns.com

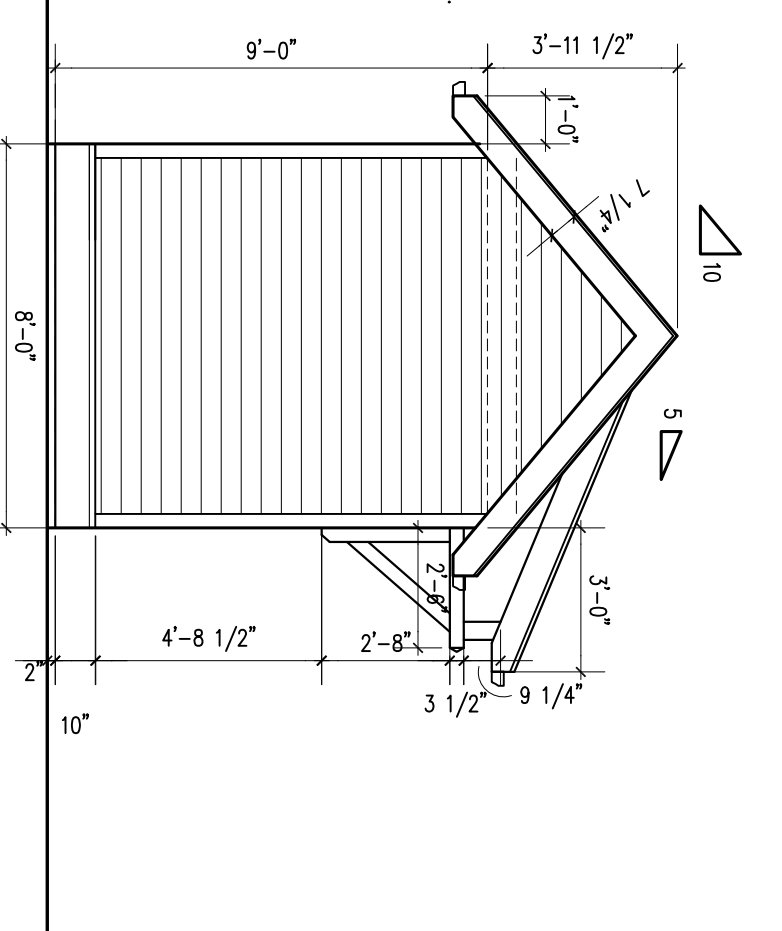
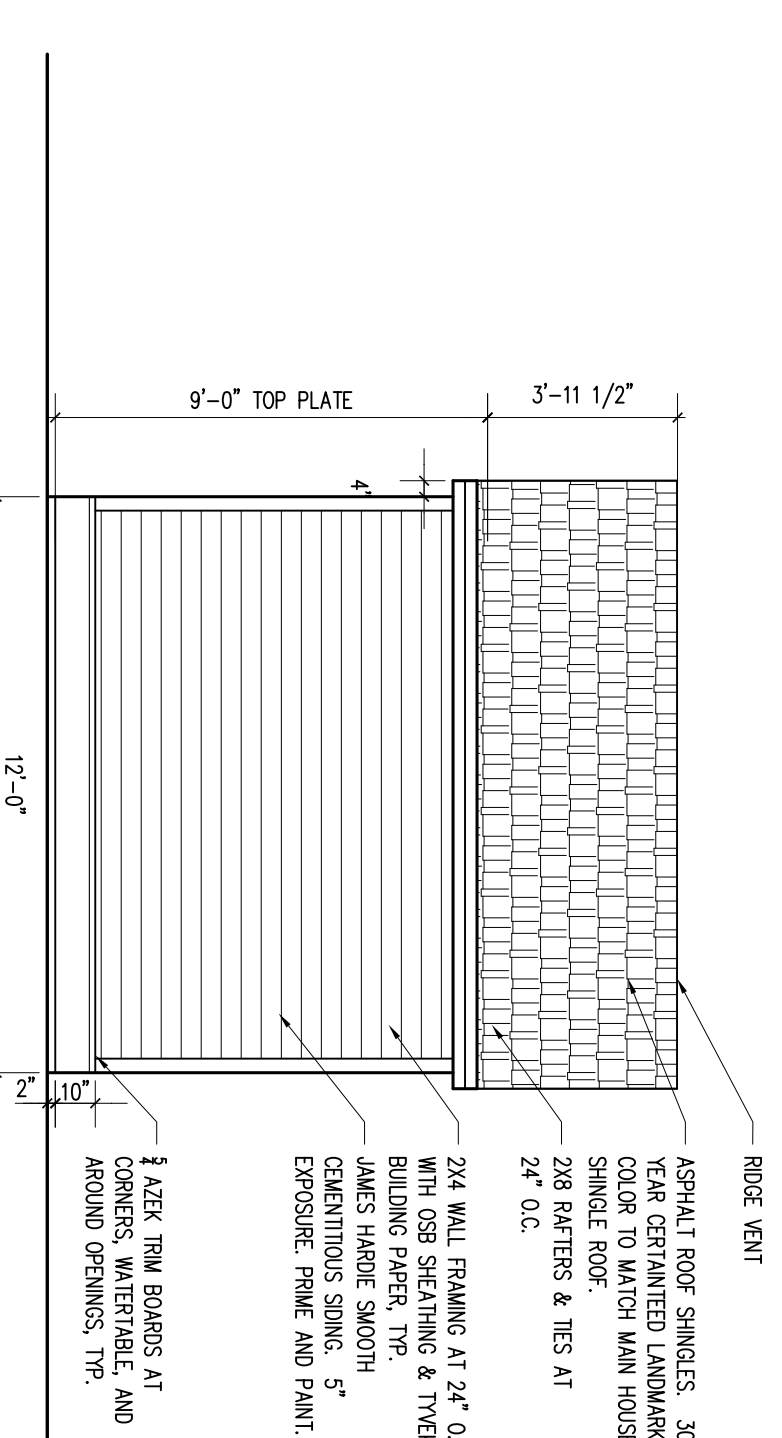
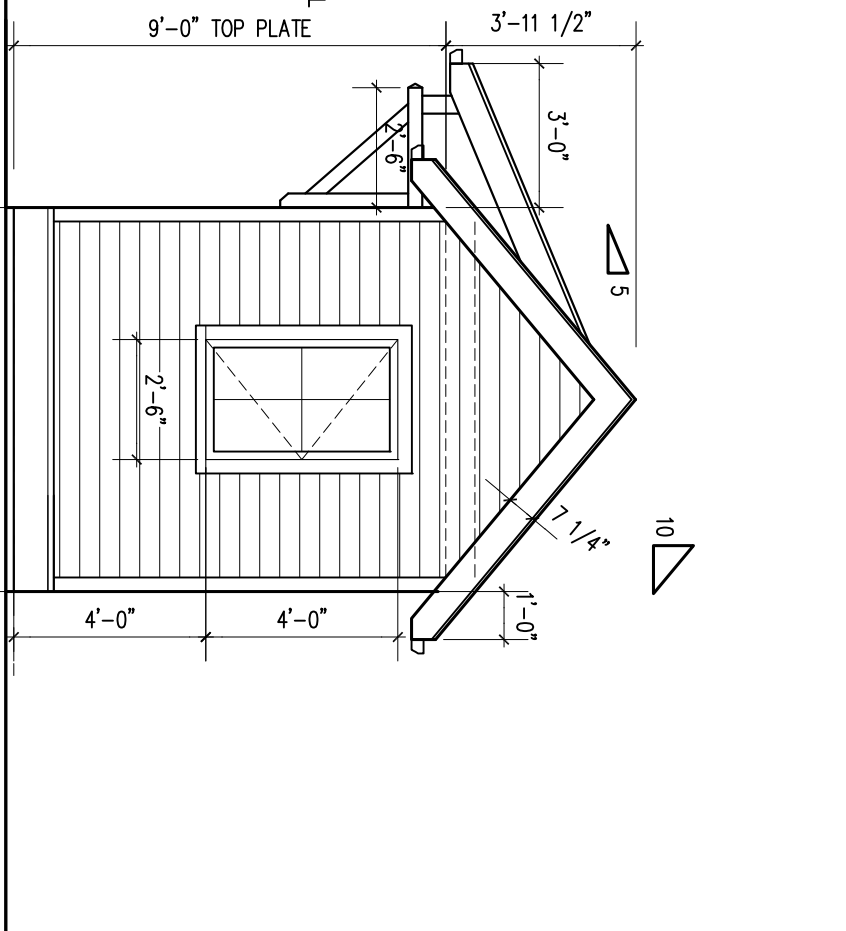
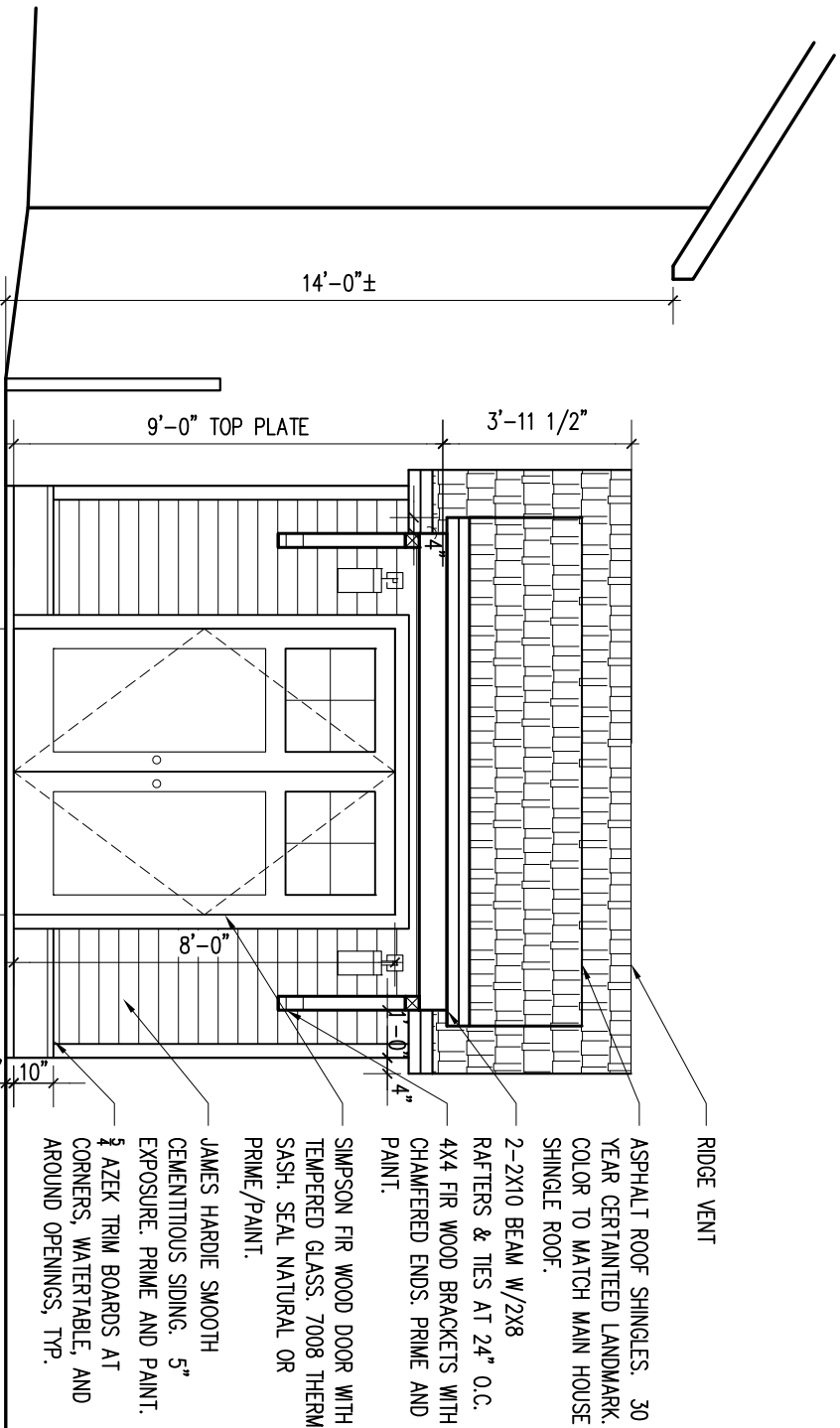
SWENNES RESIDENCE

3501 North 21st Avenue
Arlington, VA 22207
Renovation

Issue:	Date:
DRC	2021.03.24
DRC/HALRB	2022.06.21

SECTIONS

A206



**FITZHARRIS
DESIGNS**
ARCHITECTS + DESIGNERS

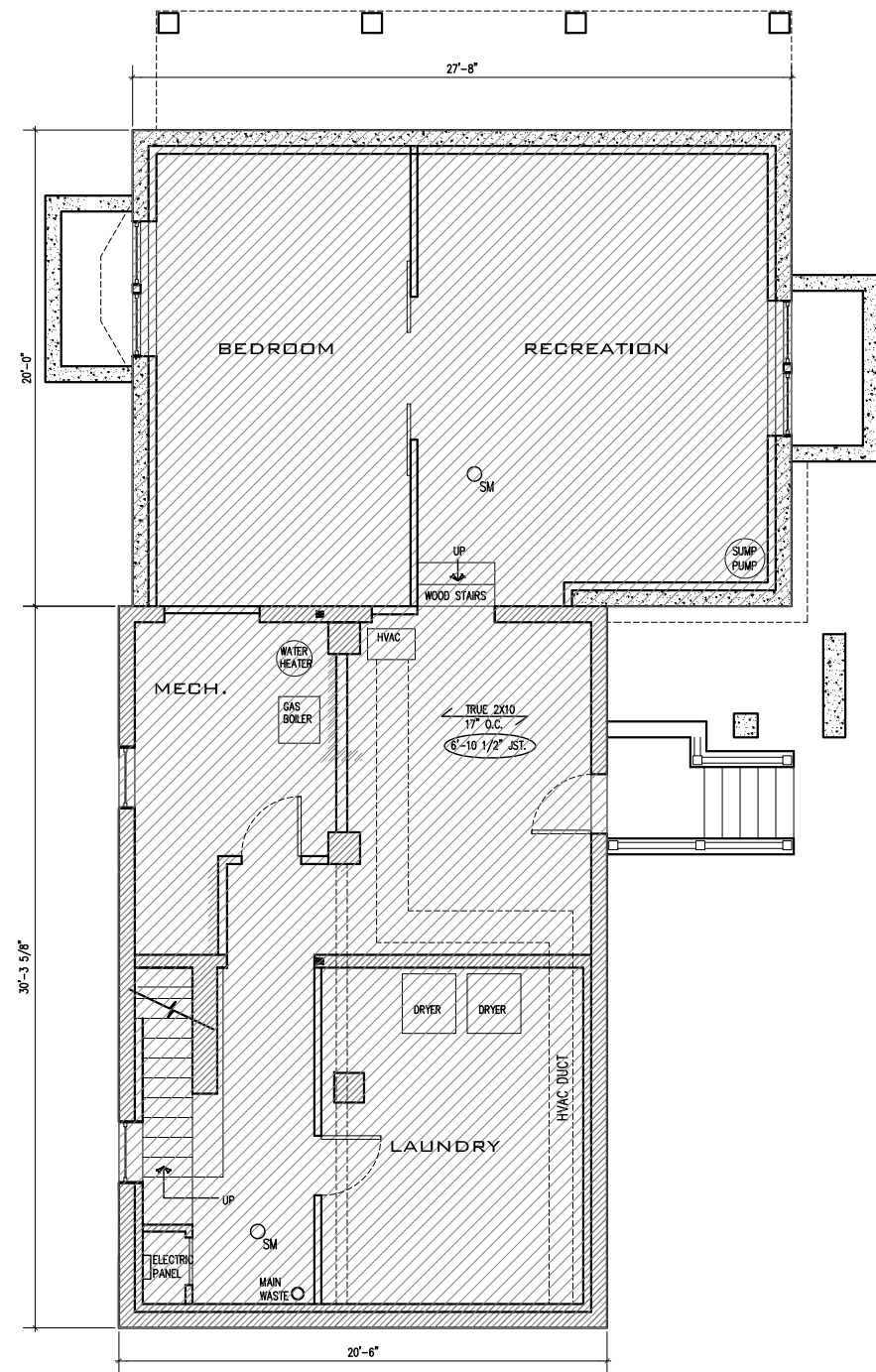
Heidi Fitzharris, AIA
3623 North 21st Avenue
Arlington, VA 22207
703.598.9318
heidif@fitzharrisdesigns.com
www.fitzharrisdesigns.com

SWENNES RESIDENCE
3501 North 21st Avenue
Arlington, VA 22207
Renovation

Issue: Date:
DRC 2021.03.24
DRC/HALRB 2022.06.21

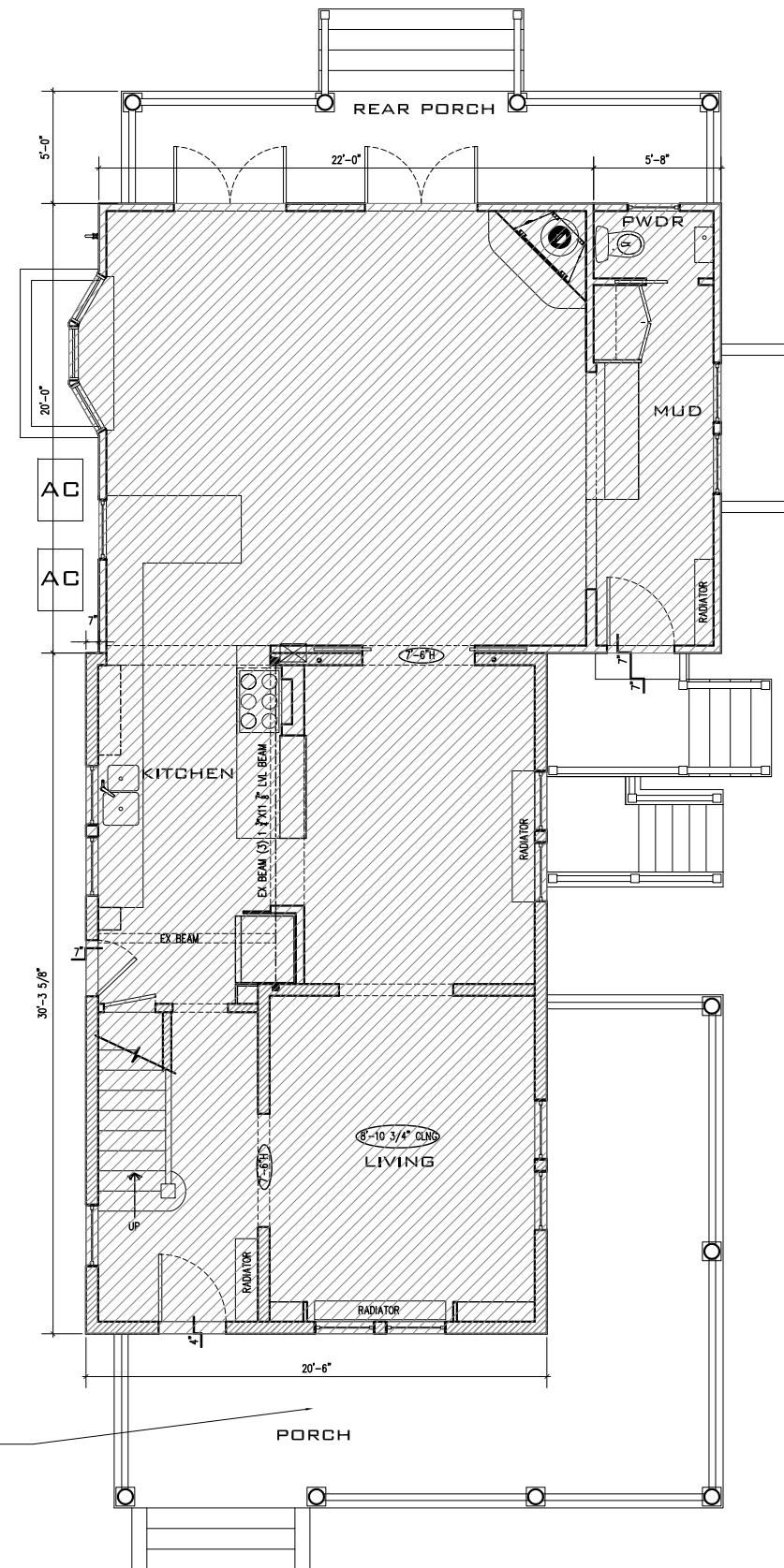
SHED ELEVATIONS

A207



EX. FIRST FLOOR PLAN

Scale: 1/8" = 1'-0"



EX. FIRST FLOOR PLAN

Scale: 1/8" = 1'-0"



ORIGINAL WOOD T&G PAINTED
FINE FLOORING IS ROTTING.
REMOVE AND PREPARE TO
REPLACE.

**FITZHARRIS
DESIGNS**

ARCHITECTS + DESIGNERS

Heidi FitzHarris, AIA
3623 North 21st Avenue
Arlington, VA 22207
703.598.9318
heidl@fitzharrisdesigns.com
www.fitzharrisdesigns.com

SWENNES RESIDENCE

3501 North 21st Avenue
Arlington, VA 22207
Renovation

Issue:	Date:
DRC	2021.03.24
DRC/HALRB	2022.06.21

NEW PLANS

AD101



7008 THERMAL SASH

SERIES: [Exterior French & Sash Doors](#)

TYPE: Exterior French & Sash

APPLICATIONS: Can be used for a swing door, with barn track hardware, with pivot hardware, in a patio swing door or slider system and many other applications for the home's exterior.

Construction Type: Engineered All-Wood Stiles and Rails with Dowel Pinned Stile/Rail Joinery

Panels: 3/4" VG Flat Panel

Profile: Ovolo Sticking

Glass: 3/4" Insulated Glazing

GET A QUOTE

If you are interested in receiving a quote from a dealer, please select the options below and click on the "Request Dealer Quote" below.

Rough opening needs to be 2" wider and 2 1/2" taller than your door.

WIDTH

HEIGHT

WOOD SPECIES

GLASS

PANEL

UPGRADES

UltraBlock Technology

REQUEST DEALER QUOTE

WHERE TO BUY

Similar Doors:

WHERE TO BUY

APPLICATIONS

STANDARD FEATURES



JELD-WEN
WINDOWS & DOORS

SITELINE®
WOOD WINDOW
CASEMENT

RECTANGLE UNITS

	18 3/4"	20 3/4"	24 3/4"	28 3/4"	30 3/4"	32 3/4"	36 3/4"	
	18"	20"	24"	28"	30"	32"	36"	Rough Opening
	12 1/8"	14 1/8"	18 1/8"	22 1/8"	24 1/8"	26 1/8"	30 1/8"	Frame Size
								Daylight Opening
48 3/4"								
48"				E*	E	E	E	
42 1/8"								
54 3/4"								
54"				E*	E	E	E	
48 1/8"								
60 3/4"								
60"				E*	E	E	E	
54 1/8"								
62 3/4"								
64"				E*	E	E	E	
58 1/8"								
66 3/4"								
66"				E*	E	E	E	
60 1/8"								

Elevation Legend:
 ## = Maximum Performance Grade (PG) Rating With Standard Glazing - Applies To Standard Operating Units Only, Unless Not Offered
 P## = Push Out Unit Available - If Rated, Maximum PG Rating With Standard Glazing Is Shown
 E = Standard Unit Meets Egress - Clear Opening Exceeds 20" Width, 24" Height, And 5.7ft²
 E* = Standard Unit Meets Egress With Use of Optional Egress Hinge

SNAP-CLAD PANEL

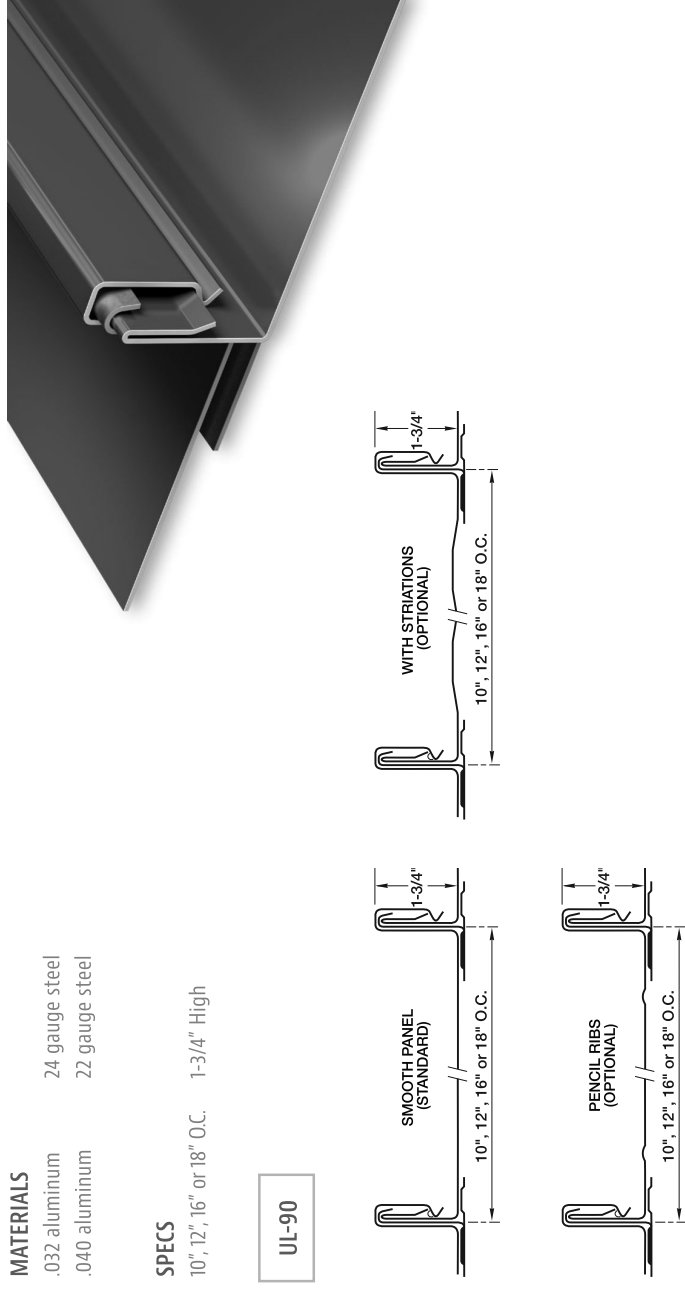
MATERIALS

- .032 aluminum 24 gauge steel
- .040 aluminum 22 gauge steel

SPECS

10", 12", 16" or 18" O.C. 1-3/4" High

UL-90



PRODUCT FEATURES

- ▶ Architectural/structural panel
- ▶ Factory-applied sealant available
- ▶ Continuous interlock
- ▶ Labor-saving one-piece design
- ▶ Pencil ribs upon request
- ▶ Striations upon request
- ▶ Factory eave notching available
- ▶ 30-year-non-prorated finish warranty
- ▶ Maximum factory-produced panel length is 64' (check w/factory for longer lengths)
- ▶ Weather-tightness warranty available

- ▶ 43 stocked colors (24 gauge steel)
 - ▶ 16 Stocked colors (22 gauge steel)
 - ▶ 36 stocked colors (.032 aluminum)
 - ▶ 22 stocked colors (.040 aluminum)
 - ▶ Panels available in Galvalume Plus
- ### UL CLASSIFICATION
- ▶ UL-580 Class 90 wind uplift
 - ▶ UL-1897 wind uplift
 - ▶ UL-790 Class A fire rated
 - ▶ UL-263 fire resistance rated
 - ▶ UL-2218 impact resistance rated

- ### ASTM TESTS
- ▶ ASTM E1592 tested
 - ▶ ASTM E283/1680 tested
 - ▶ ASTM E331/1646 tested

FLORIDA BUILDING & MIAMI-DADE PRODUCT APPROVALS

Please refer to pac-clad.com or your local factory for specific product approval numbers for Snap-Clad.

- ▶ UL-90 rated aluminum panel up to 16" O.C.
- ▶ UL-90 rated steel panel up to 18" O.C.

Note: UL-90 is available on steel panels up to 18" on center, and on aluminum panels up to 16" on center.



ROOF & WALL PANELS 07 41 00



1. Product Name

- TITE-LOC, TITE-LOC HS and TITE-LOC Plus Mechanically Seamed Panels
- SNAP-CLAD Standing Seam Panels
- Snap-On and High Snap-On Standing Seam Panels
- Redi-Roof and Redi-Roof Batten Standing Seam Panels
- Integral Standing Seam and Integral Batten Panels
- Flush Panels
- PAC-750 and PAC-850 Soffit Panels
- Exposed Fastener Panels
- Precision Series Horizontal Wall Panel

2. Manufacturer

Petersen Aluminum Corp.
1005 Tonne Rd.
Elk Grove Village, IL 60007
(847) 228-7150
(800) 323-1960
Fax: (800) 722-7150
www.pac-clad.com

3. Product Description

Petersen Aluminum produces a wide variety of wall and soffit panels in addition to a complete line of metal roofing panels. All standing seam panels are corrective leveled. Standing seam, flush, exposed fastener panels and wall and soffit panels are all factory formed in continuous lengths up to 50'. Check specific profile for maximum panel length and consult with local factory for longer lengths. Matching flashing and trim can be factory or field formed from PAC-CLAD material.

MATERIALS & FINISHES

PAC-CLAD is a versatile prefinished sheet metal coating (Kynar 500® or Hylar 5000®) that is applied to G90 galvanized steel, galvalume steel, or prime quality aluminum. Originally developed for use in abrasive environments, PAC-CLAD is ideally suited for roofing, curtainwall, storefront and trim applications.

TITE-LOC, TITE-LOC HS AND TITE-LOC PLUS

- 24 gauge PAC-CLAD G-90 galvanized steel
- 22 gauge PAC-CLAD Galvalume steel
- .032 PAC-CLAD prime quality aluminum
- .040 PAC-CLAD prime quality aluminum
- 24 gauge Galvalume® Plus

SNAP-CLAD PANELS

- 24 gauge PAC-CLAD G-90 galvanized steel
- 22 gauge PAC-CLAD Galvalume steel
- .032 PAC-CLAD prime quality aluminum
- .040 PAC-CLAD prime quality aluminum
- 16 oz cold-rolled copper
- 24 gauge Galvalume® Plus

SNAP-ON AND HIGH SNAP-ON PANELS

- 24 gauge PAC-CLAD G-90 Galvanized Steel
- .032 PAC-CLAD prime quality aluminum
- 24 gauge Galvalume® Plus

REDI-ROOF AND REDI-ROOF BATTEN PANELS

- 24 gauge PAC-CLAD G-90 galvanized steel
- 22 gauge PAC-CLAD Galvalume steel
- .032 PAC-CLAD prime quality aluminum
- 16 oz cold-rolled copper
- 24 gauge Galvalume® Plus

INTEGRAL PANELS

- 24 gauge PAC-CLAD G-90 Galvanized Steel
- .032 PAC-CLAD prime quality aluminum
- 24 gauge Galvalume® Plus

FLUSH PANELS

- 24 gauge PAC-CLAD G-90 galvanized steel
- 22 gauge PAC-CLAD Galvalume steel
- .040 PAC-CLAD prime quality aluminum
- 24 gauge Galvalume® Plus

PAC-750 AND PAC-850 SOFFIT PANELS

- .032 PAC-CLAD prime quality aluminum

EXPOSED FASTENER PANELS

- 24 gauge PAC-CLAD G-90 galvanized steel
- 22 gauge PAC-CLAD Galvalume steel
- .032 PAC-CLAD prime quality aluminum
- .040 PAC-CLAD prime quality aluminum
- .050 PAC-CLAD prime quality aluminum
- 24 gauge Galvalume® Plus

TYPES

TITE-LOC, TITE-LOC PLUS AND TITE-LOC HS PANELS
TITE-LOC panels combine structural performance with architectural panel aesthetics. A factory-applied sealant bead offers additional weather resistance. The minimum panel length is 4' (1.2 m). TITE-LOC panels feature a 2" (51 mm) leg height that requires mechanical field seaming after installation.

Panels include a concealed fastener floating clip system designed to allow for thermal expansion/contraction.

All three panels carry a UL 90 classification over a wide variety of substrates and assemblies, including 5/8" (15.9 mm) plywood, purlins and rigid insulation in conjunction with bearing plates (UL design numbers 90, 176, 180 238B, 437, 449, 451, 452, 487, 616, and 617).

TITE-LOC and TITE-LOC HS panels are factory formed to length and field-seamed to a 90 degree lock, while TITE-LOC Plus panels are designed to be field-seamed to a 180 degree lock.

TITE-LOC panels are designed for application on roof slopes as low as 1/2:12 pitch. The TITE-LOC seamer is bi-directional, offering labor savings to travel up and down slope. 6:12 roof pitch is the maximum the Tite-Loc seamer will travel upslope. The TITE-LOC Plus seamer runs in one direction only and care should be taken to install panels from left to right to ensure the seamer travels downslope. The seamer will not run up slope on a roof pitch greater than 4:12.

The 90 degree TITE-LOC can be field-curved to a minimum radius of 20'. Contact local factory for more details about curving capabilities. Additional features include:

- Weather-tightness warranty available
- Available in four panel condition variations, check with local factory for striation and pencil rib availability
- Corrective leveled

SNAP-CLAD PANELS

Offering architectural panel aesthetics, as well as structural panel performance, SNAP-CLAD panels feature a 1 3/4" (44.5 mm) leg height and a continuous interlock for improved structural performance. A factory-applied sealant bead provides additional weather resistance. The minimum panel length is 4' (1.2 m).

A concealed fastener clip system allows for thermal expansion/contraction while providing extraordinary hold-down strength. Two clips are available: a standard clip for most mansard and fascia applications and a high-performance clip for roofing application and UL 90 rated assemblies. SNAP-CLAD panels carry a UL 90 classification over a wide variety of substrates and assemblies, including 5/8" (15.9 mm) plywood, purlins and rigid insulation in conjunction with bearing plates

(UL design numbers 254, 255, 261, 303, 343, 508, 508A, and 614). A minimum slope of 2:12 pitch is recommended on most applications.

- Additional features include:
- Continuous interlock
 - Labor-saving one-piece design
 - Striations and factory eave notching
 - Stiffener beads
 - Weather-tightness Warranty Available

SNAP-ON AND HIGH SNAP-ON PANELS

These panels are designed for use in roofing, mansard and fascia applications and should be installed over a waterproofed solid substrate with a minimum 3:12 roof pitch. Factory roll formed in continuous lengths, Snap-On panels are ideal for specification on applications where roof transitions are required. The simplicity of the pan design, combined with inline tension leveling, provides superior flatness and allows for greater workability onsite.

Both panels in steel carry a UL 90 rating for wind uplift when fastened to a solid substrate, including 5/8" (15.9 mm) plywood or OSB laminated to rigid insulation (UL design numbers 351 and 352). This is one of the few UL 90 systems that does not require sealant between plywood boards.

The 1" (25.4 mm) Snap-On standing seam panel can now be curved to a concave or convex radius, with a minimum radius of 9' (2.7 m). This panel is ideal for barrel vaults and entranceways. Curved panels must be installed over a waterproofed solid substrate. The High Snap-On profile features a 1 1/2" (38.1 mm) standing seam. Unlike the Snap-On panel, this panel cannot be curved. Additional features include:

- Stiffener beads available

REDI-ROOF AND REDI-ROOF BATTEN PANELS

This architectural metal roofing system, which is available exclusively from Petersen Aluminum, may be specified in either batten or standing seam profile and is intended for application over a solid substrate with a minimum 3:12 roof pitch. The minimum panel length is 4' (1.2 m).

Steel Redi-Roof panels carry a UL 90 rating for wind uplift when fastened to a solid substrate, including 5/8" (15.9 mm) plywood or OSB laminated to rigid insulation (UL design numbers 350, 353 and 615). Additional features include:

- Labor-saving one-piece design
- Factory eave notching
- Stiffener beads

INTEGRAL STANDING SEAM AND INTEGRAL BATTEN PANELS

PAC-CLAD integral panels are designed for roofing applications, mansards, canopies and fascia. The one-piece design of the integral panels minimizes labor and allows for quick and easy installation. The minimum panel length is 4' (1.2 m).

Steel PAC-CLAD integral panels carry a UL 90 classification for wind uplift when fastened to a solid substrate, including 5/8" (15.9 mm) plywood or OSB laminated to rigid insulation (UL design numbers 346 and 347).

FLUSH PANELS

PAC-CLAD Flush panels are designed for use in wall, fascia and soffit applications where a flush or flat appearance is desired. A rounded interlock leg and concealed fastening system improve the flush appearance while providing additional strength.

These panels are not intended for use in roofing or mansard applications. Panels are factory-formed to length to minimize field cutting. The minimum panel length is 4' (1.2 m). The maximum panel length is 28' (8.4 m).

The Flush panels are available with optional stiffening beads, which are recommended for longer panel lengths. One or two beads are available. Flush panels may also be specified for use as soffit panels. The soffit version of this panel is available with venting strips or perforated, in aluminum only, for increased air flow and under eave ventilation. Contact the local factory for venting options. Additional features include:

- Rounded interlock leg providing improved flush fit

PAC-750 AND PAC-850 SOFFIT PANELS

PAC-750 preformed soffit panels are suitable for both commercial and residential use. PAC-850 soffit panels utilize an innovative hook and grab interlock. Both panels are roll-formed of .032 gauge aluminum, and both panels are 12" (305 mm) wide with a "vee" groove every 6" (152 mm) center-to-center. They are furnished in continuous lengths up to 20' (6.1 m). Steel is not available in either profile.

The PAC-750 and PAC-850 soffit panels can be perforated to allow for airflow and under eave ventilation. Both PAC-750 and PAC-850 can be specified as fully vented, half vented or solid. Petersen Aluminum can provide a soffit "J" channel as firm to match

any of their soffit panels. "J" channel is available in lengths up to 12' (3.7 m) in matching colors. Additional features include:

- Perforation available for ventilation (PAC-750 and PAC-850)
- Roll-formed to exact lengths

EXPOSED FASTENER PANELS

Petersen Aluminum offers a complete line of exposed fastener panels providing design flexibility, cost-effectiveness and aesthetics. The 7.2 Panel, R-36 Panel and 7/8" Corrugated Panels are ideal for a wide range of building envelope applications including roofs, walls, and linear panels. The R-41, M-42, M-36 and 1/2" Corrugated panels are suitable for wall applications and equipment screens.

The exposed fastener panels can also be produced perforated for a variety of exterior projects, such as equipment screens, or interior acoustical applications. Additional features include:

- Matching screws and rivets
- Closure strips available
- Precut short lengths - 2' (0.61 m) minimum

PRECISION SERIES

The PAC Precision Series Horizontal Wall Panels offer design flexibility, bold visual effect, cost effectiveness and easy installation. Two profiles are available: The HWP has a concealed extended screw leg and the HWPC utilizes a clip leg. Both panels can also be installed vertically in some applications, and can be specified as perforated for use in equipment screen applications. Maximum panel length is 35'.

SIZES

- TITE-LOC, TITE-LOC HS and TITE-LOC Plus Panels
- Width - 12", 16", 18" - (305, 406, 457 mm)
 - Height - 2" (51 mm)
- SNAP-CLAD Standing Seam Panels
- Width - 10", 12", 16", 18" - (254, 305, 406, 457 mm)
 - Height - 1 3/4" (44.5 mm)

Snap-On Standing Seam Panels

- Width - 12", 18", 19", 20" (305, 457, 483, 508 mm)
- Height - 1" (25.4 mm)

Snap-On Batten Panels

- Width - 11", 12", 18" (279, 305, 457 mm)
- Height - 1 1/2" (38.1 mm)

High Snap-On Panels

- Width - 11", 18", 19" (279, 457, 483 mm)
- Height - 1 1/2" (38.1 mm)

COLORS

Petersen Aluminum panels are available in the following PAC-CLAD finishes:

- 24 gauge G-90 galvanized steel - 37 stocked colors

- 22 gauge galvalume steel - 13 stocked colors
- .032 prime quality aluminum - 36 stocked colors
- .040 prime quality aluminum - 20 stocked colors
- .050 prime quality aluminum - 29 stocked colors
- 24 gauge Galvalume® Plus also available

ACCESSORIES

Petersen Aluminum fabricates a wide range of roofing accessories. Coping, gravel stops, gutters and downspouts are all formed from 38 standard PAC-CLAD colors.

LIMITATIONS

Contact Petersen Aluminum regarding panel limitations as they pertain to your project specifics.

4. Technical Data

ASTM INTERNATIONAL

- ASTM A653 Standard Specification for Steel Sheet, Zinc-Coated (Galvanized) or Zinc-Iron Alloy-Coated (Galvannealed) by the Hot-Dip Process
- ASTM A792/A792M Standard Specification for Steel Sheet, 55 % Aluminum-Zinc Alloy-Coated by the Hot-Dip Process
- ASTM B209 Standard Specification for Aluminum and Aluminum-Alloy Sheet and Plate
- ASTM E283 Standard Test Method for Determining Rate of Air Leakage Through Exterior Windows, Curtain Walls, and Doors Under Specified Pressure Differences Across the Specimen
- ASTM E331 Standard Test Method for Water Penetration of Exterior Windows, Skylights, Doors, and Curtain Walls by Uniform Static Air Pressure Difference
- ASTM E1592 Standard Test Method for Structural Performance of Sheet Metal Roof and Siding Systems by Uniform Static Air Pressure Difference
- ASTM E1646 Standard Test Method for Water Penetration of Exterior Metal Roof Panel Systems by Uniform Static Air Pressure Difference
- ASTM E1680 Standard Test Method for Rate of Air Leakage Through Exterior Metal Roof Panel Systems

UNDERWRITERS LABORATORIES, INC. (UL)

- UL 263 Fire Tests of Building Construction and Materials
- UL 580 Standard for Tests for Uplift Resistance

tance of Roof Assemblies

- UL 790 Standard Test Methods for Fire Tests of Roof Coverings
- UL 1897 Uplift Tests for Roof Covering Systems
- UL 2218 Standard for Impact Resistance of Prepared Roof Covering Materials

ENVIRONMENTAL CONSIDERATIONS

Where possible, Petersen Aluminum products include a high percentage of recycled material, which lowers the environmental footprint. Additionally, PAC products offer a long life span, and are 100% recyclable at the end of their extended service life, which may reduce the solid waste stream.

Petersen also offers 29 finishes that are listed with the Cool Roof Ratings Council, 31 finishes that are Energy Star approved, and 29 finishes that have an SRI of 29 or higher for steep slope roofs, for qualification towards credits for LEED's Green Building Rating System.

PHYSICAL PROPERTIES

- TITE-LOC & TITE-LOC Plus - ASTM E331/1646 and ASTM E283/1680
- SNAP-CLAD - ASTM E331/1646 and ASTM E283/1680
- Snap On & High Snap-On - ASTM E331/1646 and ASTM E283/1680 (when applied over a solid substrate)
- Redi-Roof & Redi-Roof Batten - ASTM E331/1646 and ASTM E283/1680 (when applied over a solid substrate)
- Integral Panels - ASTM E331/1646 and ASTM E283/1680 (when applied over a solid substrate)
- Flush Panels - ASTM E330
- PAC 850 - ASTM E330
- Precision Wall Series - ASTM E330, ASTM E283, ASTM E331, AAMA 501.1-05

Test reports are available to design professionals upon request.

5. Installation

PREPARATORY WORK

Handle and store products according to manufacturer's recommendations.

Deliver materials in manufacturer's original, unopened, undamaged containers with identification labels intact. Store materials protected from exposure to harmful environmental conditions and at temperature and humidity conditions recommended by the manufacturer.

Verify that site conditions are acceptable



Share:



Sizing

8/4 X THICKNESS Traditional Only

NOMINAL	ACTUAL	LENGTHS
8/4 x 4	1 1/2" x 3 1/2"	18'
8/4 x 6	1 1/2" x 5 1/2"	18'
8/4 x 8	1 1/2" x 7 1/4"	18'
8/4 x 10	1 1/2" x 9 1/4"	18'
8/4 x 12	1 1/2" x 11 1/4"	18'

6/4 X THICKNESS Frontier Only

NOMINAL	ACTUAL	LENGTHS
6/4 x 4	1 1/4" x 3 1/2"	20'
6/4 x 6	1 1/4" x 5 1/2"	20'
6/4 x 8	1 1/4" x 7 1/4"	20'
6/4 x 10	1 1/4" x 9 1/4"	20'
6/4 x 12	1 1/4" x 11 1/4"	20'

5/4 X THICKNESS

NOMINAL	ACTUAL	LENGTHS
5/4 x 4	1" x 3 1/2"	12', 18', and 20'
5/4 x 5	1" x 4 1/2"	12', 18', and 20'
5/4 x 6	1" x 5 1/2"	12', 18', and 20'
5/4 x 8	1" x 7 1/4"	12', 18', and 20'
5/4 x 10	1" x 9 1/4"	12', 18', and 20'
5/4 x 12	1" x 11 1/4"	12', 18', and 20'
5/4 x 16	1" x 15 1/4"	12', 18', and 20'

RABBETED TRIMBOARD (3/4" X 3/4" CHANNEL)

NOMINAL	ACTUAL	LENGTHS
5/4 x 4	1" x 3 1/2"	18'

THE MOST TRUSTED NAME IN TRIM

Beautiful and long-lasting, AZEK Trim is a more workable and durable replacement to traditional wood in non-stress and non-load-bearing applications. It is easily milled, routed and heat formed for exquisite custom looks or curved applications. AZEK Trim does not require paint for protection but is easily painted for aesthetic purposes. AZEK Trim is available in two finishes: Traditional has a smooth, semimatte finish white Frontier features a rustic, woodgrain appearance.

Visit the [AZEK BIM library](#) to easily download BIM content on Trimboards for designing in REVIT.

AZEK TRIM AVAILABLE WITH PROTECTIVE FILM

To ensure that it looks as beautiful on homes as it does when it leaves our facilities, Classic AZEK Trim comes with Protective Film to preserve the crisp white semimatte finish on both Traditional and Frontier finishes. The film protects our trim through every production phase:

- Shipping
- Repacking
- Installation
- Storage
- Handling



AZEK Trim with Protective Film should be kept dry prior to installation. Do not expose film to direct sunlight for extended periods. Protective Film can be removed prior to, during or immediately after installation.

ORDER SAMPLE
 DOWNLOAD BIM/REVIT

Strength with Style

LANDMARK[®] PREMIUM

- Dual-layer, high performance
- 300 lbs. per square
- Max Def color palette
- Lifetime limited warranty

LANDMARK[®] PRO

- Dual-layer, high performance
- 250 lbs. per square
- Max Def color palette
- Lifetime limited warranty

LANDMARK[®]

- Dual-layer durability
- 229/235 lbs. per square
- Lifetime limited warranty



LANDMARK PREMIUM

SPECIFICATIONS

- Two-piece laminated fiber glass-based construction
- Classic shades and dimensional appearance of natural wood or slate
- 300 lbs. per square

For U.S. building code compliance, see product specification sheets.

CertainTeed products are tested to ensure the highest quality and comply with the following industry standards:

Fire Resistance:

- UL Class A
- UL certified to meet ASTM D3018 Type 1

Wind Resistance:

- UL certified to meet ASTM D3018 Type 1
- ASTM D3161 Class F

Tear Resistance:

- UL certified to meet ASTM D3462
- CSA standard A123.5


Wind Driven Rain Resistance:

- Miami-Dade Product Control Acceptance: Please reference www.certainteed.com to determine approved products by manufacturing location.

Quality Standards:

- ICC-ES-ESR-1389 & ESR-3537

WARRANTY

- Lifetime limited transferable warranty against manufacturing defects on residential applications
- 50-year limited transferable warranty against manufacturing defects on group-owned or commercial applications
- 15-year StreakFighter[®] algae-resistance warranty 
- 10-year SureStart[™] protection
- 15-year 110 mph wind-resistance warranty
- Wind warranty upgrade to 130 mph available. CertainTeed starter and CertainTeed hip and ridge required

See actual warranty for specific details and limitations.



LANDMARK PRO

SPECIFICATIONS

- Two-piece laminated fiber glass-based construction
- Classic shades and dimensional appearance of natural wood or slate
- 250 lbs. per square

For U.S. building code compliance, see product specification sheets.

CertainTeed products are tested to ensure the highest quality and comply with the following industry standards:

Fire Resistance:

- UL Class A
- UL certified to meet ASTM D3018 Type 1

Wind Resistance:

- UL certified to meet ASTM D3018 Type 1
- ASTM D3161 Class F

Tear Resistance:

- UL certified to meet ASTM D3462
- CSA standard A123.5

Wind Driven Rain Resistance:


- Miami-Dade Product Control Acceptance: Please reference www.certainteed.com to determine approved products by manufacturing location.

Quality Standards:

- ICC-ES-ESR-1389 & ESR-3537

Landmark Pro Silver Birch is an ENERGY STAR rated product and may qualify for a federal tax credit.

WARRANTY

- Lifetime limited transferable warranty against manufacturing defects on residential applications
- 50-year limited transferable warranty against manufacturing defects on group-owned or commercial applications
- 15-year StreakFighter[®] algae-resistance warranty 
- 10-year SureStart[™] protection
- 15-year 110 mph wind-resistance warranty
- Wind warranty upgrade to 130 mph available. CertainTeed starter and CertainTeed hip and ridge required

See actual warranty for specific details and limitations.



LANDMARK

SPECIFICATIONS

- Two-piece laminated fiber glass-based construction
- Classic shades and dimensional appearance of natural wood or slate
- 229/235 lbs. per square

For U.S. building code compliance, see product specification sheets.

CertainTeed products are tested to ensure the highest quality and comply with the following industry standards:

Fire Resistance:

- UL Class A
- UL certified to meet ASTM D3018 Type 1

Wind Resistance:

- UL certified to meet ASTM D3018 Type 1
- ASTM D3161 Class F

Tear Resistance:

- UL certified to meet ASTM D3462
- CSA standard A123.5

Wind Driven Rain Resistance:


- Miami-Dade Product Control Acceptance: Please reference www.certainteed.com to determine approved products by manufacturing location.

Quality Standards:

- ICC-ES-ESR-1389 & ESR-3537

Landmark Silver Birch is an ENERGY STAR rated product and may qualify for a federal tax credit.

WARRANTY

- Lifetime limited transferable warranty against manufacturing defects on residential applications
- 10-year StreakFighter[®] algae-resistance warranty 
- 10-year SureStart[™] protection
- 15-year 110 mph wind-resistance warranty
- Wind warranty upgrade to 130 mph available. CertainTeed starter and CertainTeed hip and ridge required

See actual warranty for specific details and limitations.



1 X 4 IPE WOOD T&G DECKING

\$4.73

Shipping calculated at checkout.

SIZE

1 foot

QUANTITY

- 1 +

ADD TO CART

BUY IT NOW

Share



1 x 4 Ipe Wood Tongue and Groove Decking

Ipe wood decking from IpeDepot.com is all premium grade decking material... Don't be fooled by lower grade, cheap alternatives that our competition offers! We service a broad range of customers from homeowners and residential contractors to large commercial developers.

Ipe Wood Decking offers benefits such as:

- Low maintenance decking material
- Durable, scratch resistant surface
- All natural, chemical free decking
- Up to a 75 year lifespan
- Resists wood boring insects
- Up to a Class A fire rating for flame spread

← [BACK TO TONGUE & GROOVE IPE DECKING](#)

BUY IPE ONLINE

Ipe Decking

Ipe Siding

[Ipe Flooring](#)

[Ipe Deck Quote](#)

[Search](#)

BE IN THE KNOW

Promotions, new products and sales. Directly to your inbox.

First Name*

Last Name*

Email*

Sign Me Up

We will not share your email or spam you!

