

MET PARK

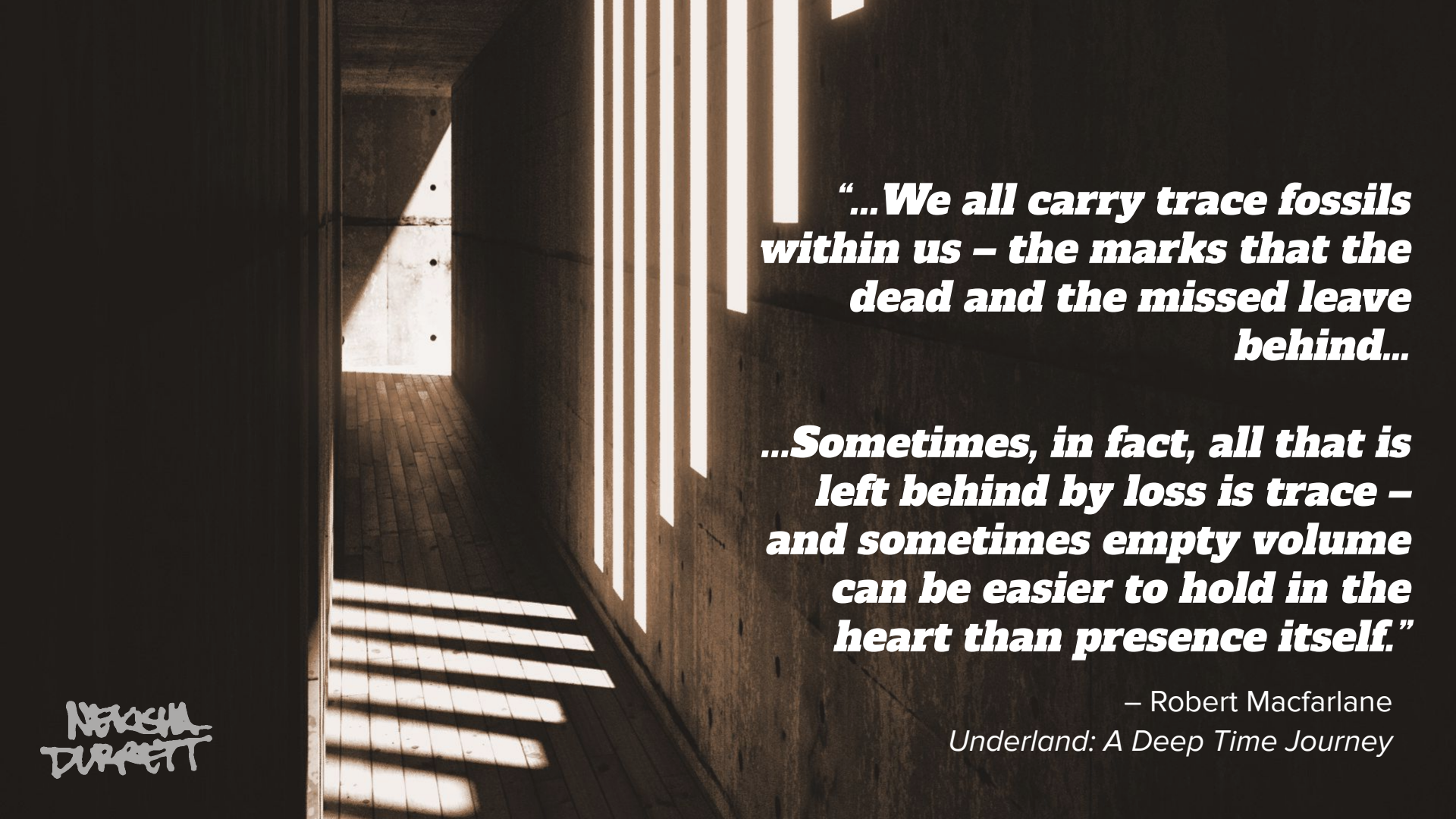
DESIGN UPDATE

Design progress as of April 14, 2022

First presented on February 23, 2021

**NEKISHA
DURRETT**

NEKISHA DURRETT STUDIO



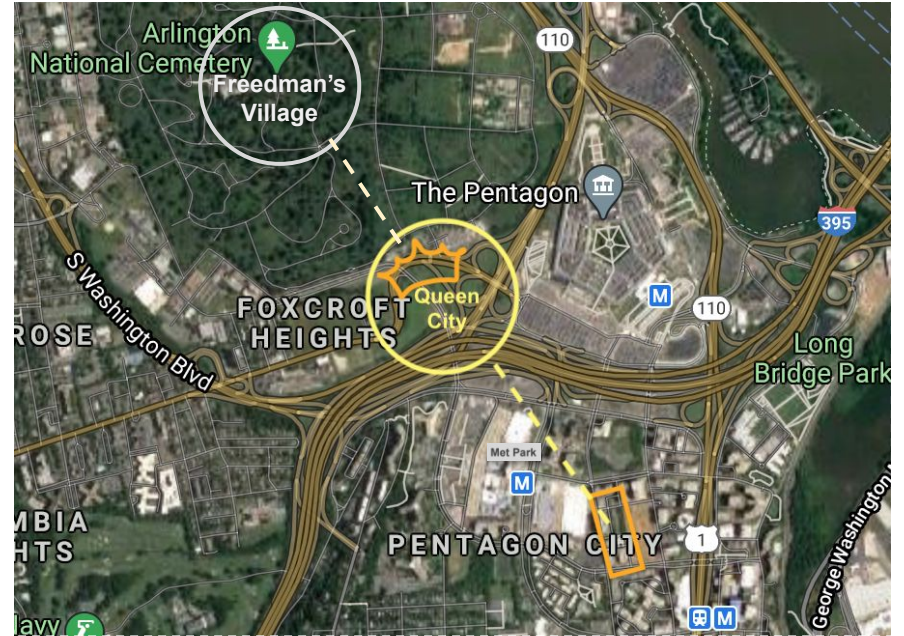
“...We all carry trace fossils within us – the marks that the dead and the missed leave behind...”

...Sometimes, in fact, all that is left behind by loss is trace – and sometimes empty volume can be easier to hold in the heart than presence itself.”

– Robert Macfarlane
Underland: A Deep Time Journey

**NEKISHA
DURRETT**

SITE



NEKISHA
DURRETT



FREEDMAN'S VILLAGE

1863-1900

Freedman's Village - Green Heights Arlington

NOV 1863
DUPRETT



**EAST ARLINGTON |
QUEEN CITY
1900-1941**

© Virginia Room, Arlington Public Library

**NEASHA
DUPRETT**

QUESTIONS

- What “trace” did the former residents of East Arlington and Queen City leave behind?
- What does their legacy look like?
- How do we remember and carry this legacy forward?

NOVA
DUPRETT

THE OVERLOOK

- See the structure above the trees
- Mysterious full of wonder
- Textures and light to attract people
- At night it would glow (inner, coming out)
- Accessible

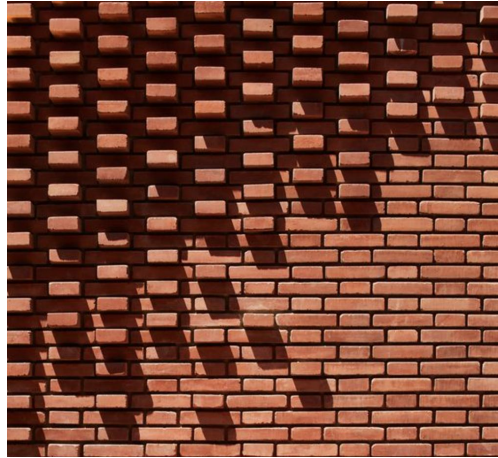


NEALMA
DURRETT



MATERIALS

- Pottery
- Reclaimed bricks
- Passive lighting
- Sun Tunnel(s)
- LED Lighting



Exterior Façade

DAYTIME
LIGHT STUDY



Exterior Façade

DAYTIME
STUDY





Exterior Façade

DAYTIME
STUDY



ASC Design Group

NEKISHA
DURRATT

Exterior Façade

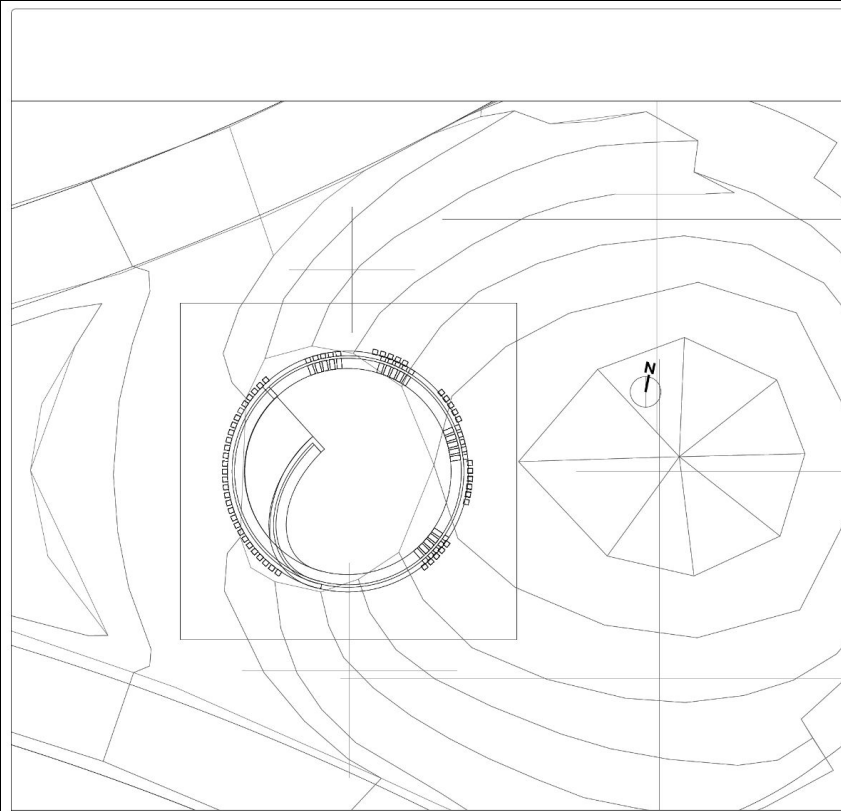
NIGHTTIME
STUDY



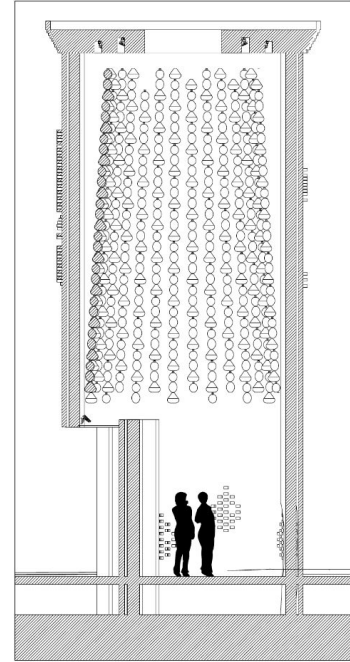
ASC Design Group

NEKISHA
DURRATT

Interior Layout



1 Site Plan
Scale: 3/8" = 1'-0"



2 8" VESSELS - 1/2" SPACING
Scale: 3/8" = 1'-0"

**NEVESH
DUPRETT**

NOTES:

KEY PLAN

GRAPHIC SCALE
1:20
0 100 200 300

GRAPHIC SCALE
1:50
0 1000 2000

GRAPHIC SCALE
1:25
0 500 1000

GRAPHIC SCALE(S)

2/14/2022
25% SUBMISSION

ASC Design Group
233 Laidlaw Ln.
Greenbelt, MD 20770

METROPOLITAN PARK
Arlington, VA

METS PARK PUBLIC ART LIGHTING
ASC PROJECT #041
ASC PROJECT #

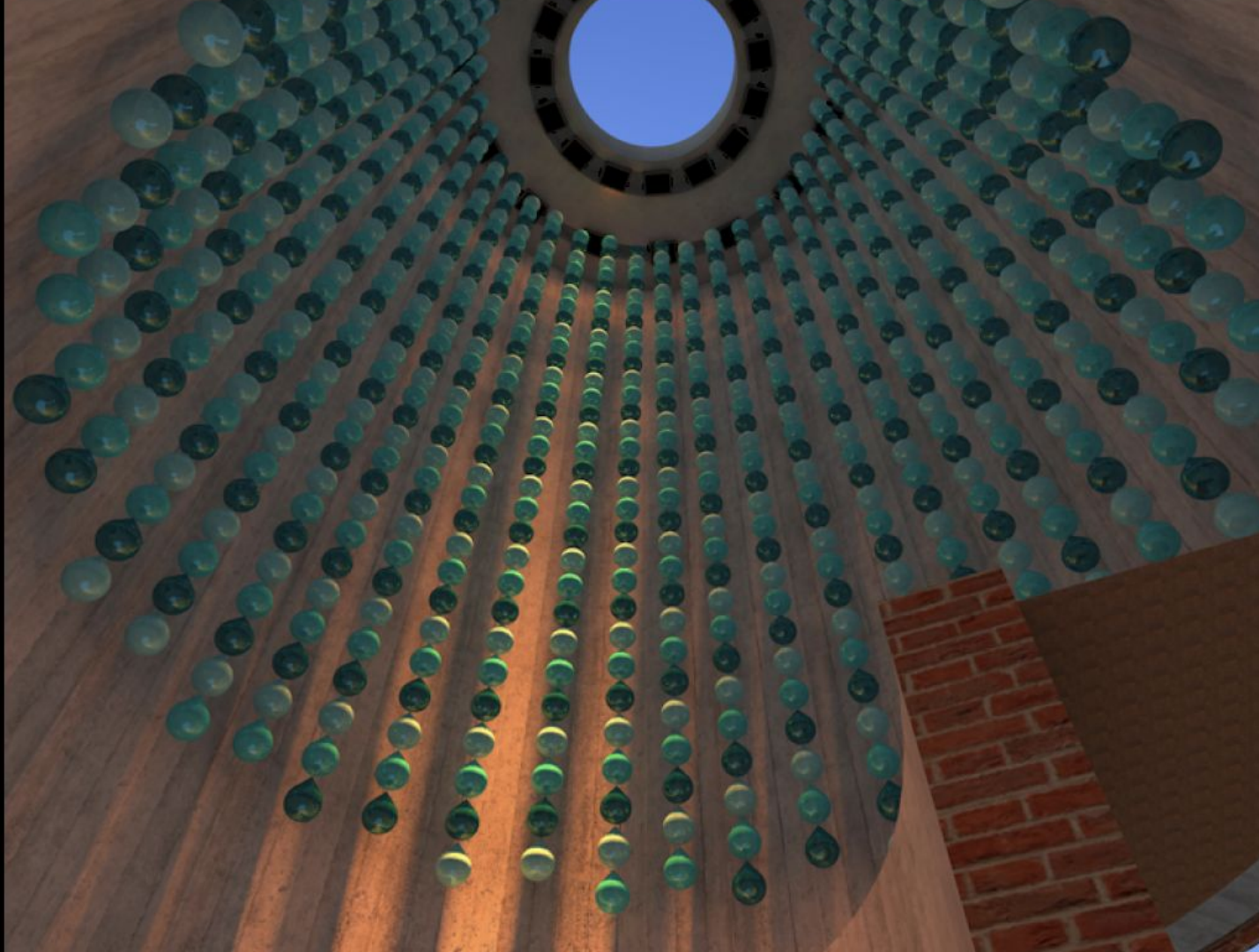
LIGHTING PLAN

ASC KAIASC ASC

SHEET NO. 1 OF 3
LTG 01 01

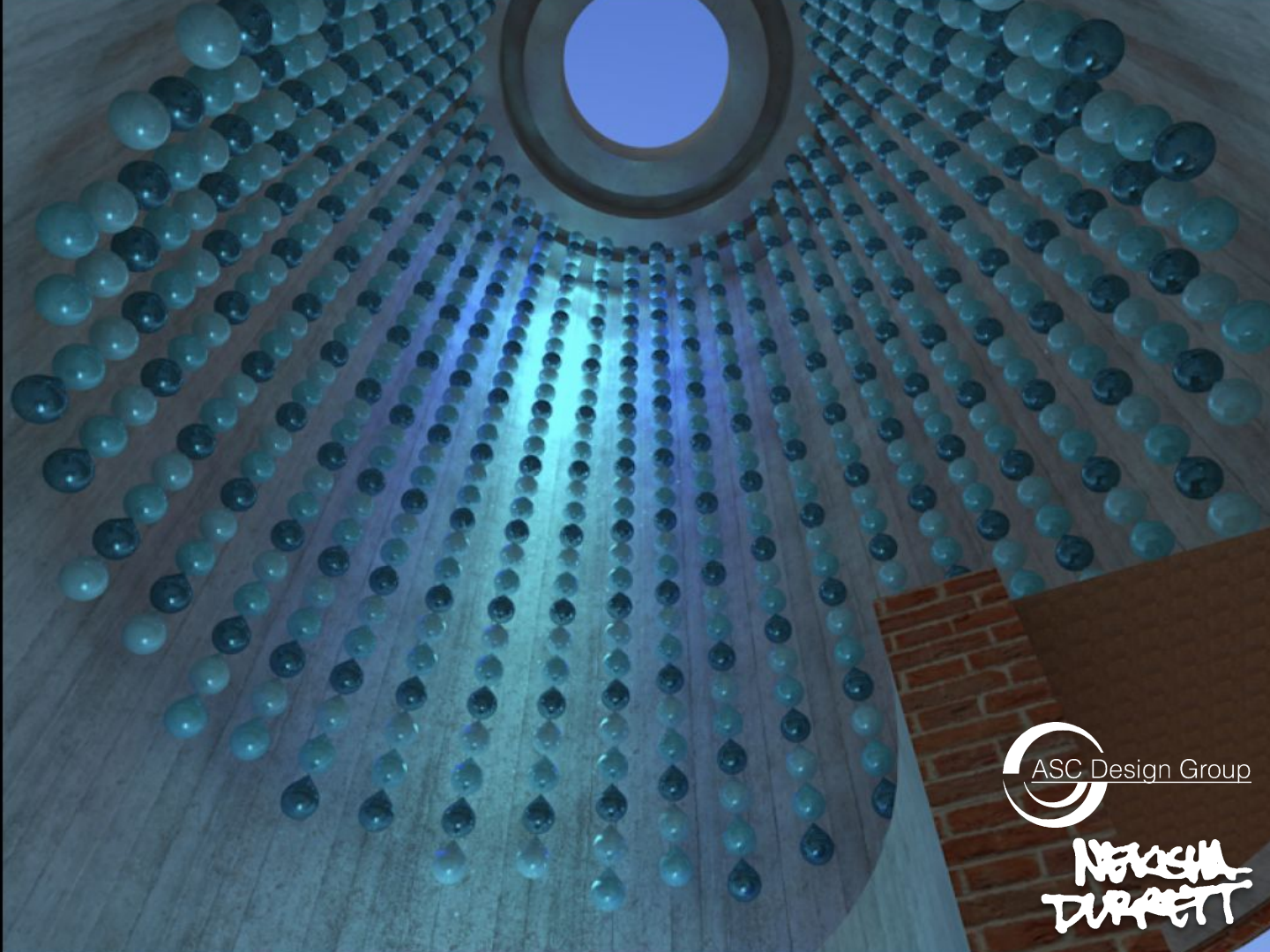
Interior Layout

VESSLS |
COLOR STUDY



Interior Layout

VESSELS |
COLOR STUDY



ASC Design Group

NEKISHA
DURRATT

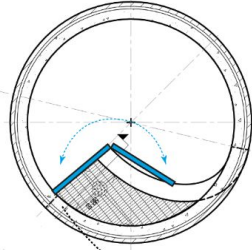
Board Formed Concrete

Interior Layout

WALL
MATERIAL



Door Prototype



CLOSED | EXTERIOR

Possible materials and layout



OPEN | INTERIOR

Exterior grade wood (species TBD)

Glass etched image of 1940s Queen City/East Arlington + Artist statement with list of participating ceramacists

Historical / Geographical context + QR Code. Visible when door is in OPEN position

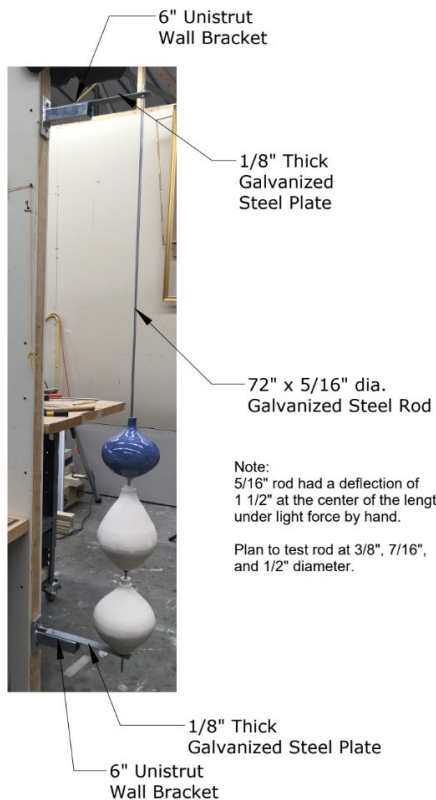
NAKASHI
DURRETT

Ceramic
updates



NEKISHA
DUPRETT

Ceramic updates



REVISIONS	
NO.	REVISIONS
1	INITIAL
2	
3	
4	
5	
6	
7	
8	
9	
10	

Met Park

Vessel Bracket (1)

MOREL DOUCET

MOREL DOUCET

MOOD BOARD



← MOREL DOUCET

MOREL DOUCET

PROPOSED CERAMIC Vase Forms



DM 2064
Contemporary Vase with Lid
8.3" (21 cm.) H

NIKASHA DURRATT

Ceramic updates- Mood Boards