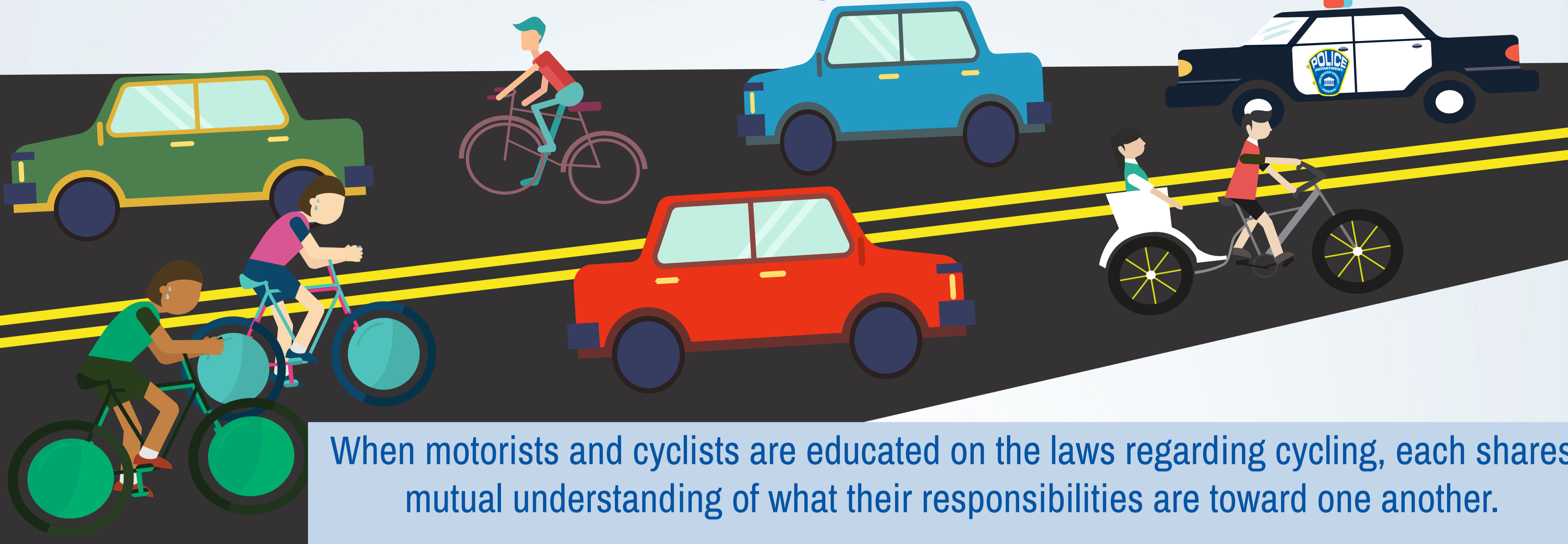




Share our Roadways Safely

laws pertaining to cyclists and motorists



When motorists and cyclists are educated on the laws regarding cycling, each shares mutual understanding of what their responsibilities are toward one another.

By proceeding with care and caution, we can ensure that everyone arrives at their destination safely.



bicycle TIPS

- Ride on the right side of the road, in the same direction as traffic (46.2-806)
- Obey all traffic signs and signals (14.2-65)
- Use hand signals to communicate intended movements (46.2-849)
- headlights and taillights are required when operating a bicycle between sunset and sunrise (46.2-1015)
- Helmets are required for riders 14 years of age and younger, and recommended for all other riders (14.2-64)
- Ride no more than two abreast (46.2-905)



motorist TIPS

- Be aware of cyclists, especially when entering a roadway, turning left, or turning right at a red light (46.2-821, 825, 835)
- Give the cyclist at least 3 feet of space when passing (46.2-839)
- Travel the speed limit and avoid forfeiting any unlawful right-of-way (46.2-823)
- Avoid stopping, standing, parking or driving a motor vehicle in the bicycle lane, except when permitted by law (14.2-65)

Remember...

- Bicycles are considered a vehicle while operated on the highway.
- Look out for cyclists and avoid opening the door of a parked motor vehicle on the side adjacent to moving vehicular traffic, unless it is reasonably safe to do so.
- Cyclists should ride on the right with traffic, as close to the right curb or edge of roadway except when overtaking or passing another vehicle, when preparing to turn left, when reasonably necessary to avoid conditions/hazards, when avoiding a lane that must turn or diverge right, and when riding on a one-way road, a person may also ride as near the left-hand curb as safely practicable.



Be a PAL Predictable - Alert - Lawful

