

# PROJECT DESIGN UPDATE

## Crystal City Metrorail Station EAST ENTRANCE



September 6, 2022



# How This Works

## For questions during this presentation

- Ask questions anytime during the presentation using the Live Event Q&A
- The project team will respond to your questions during the Q&A period following the presentation

## To provide your input later

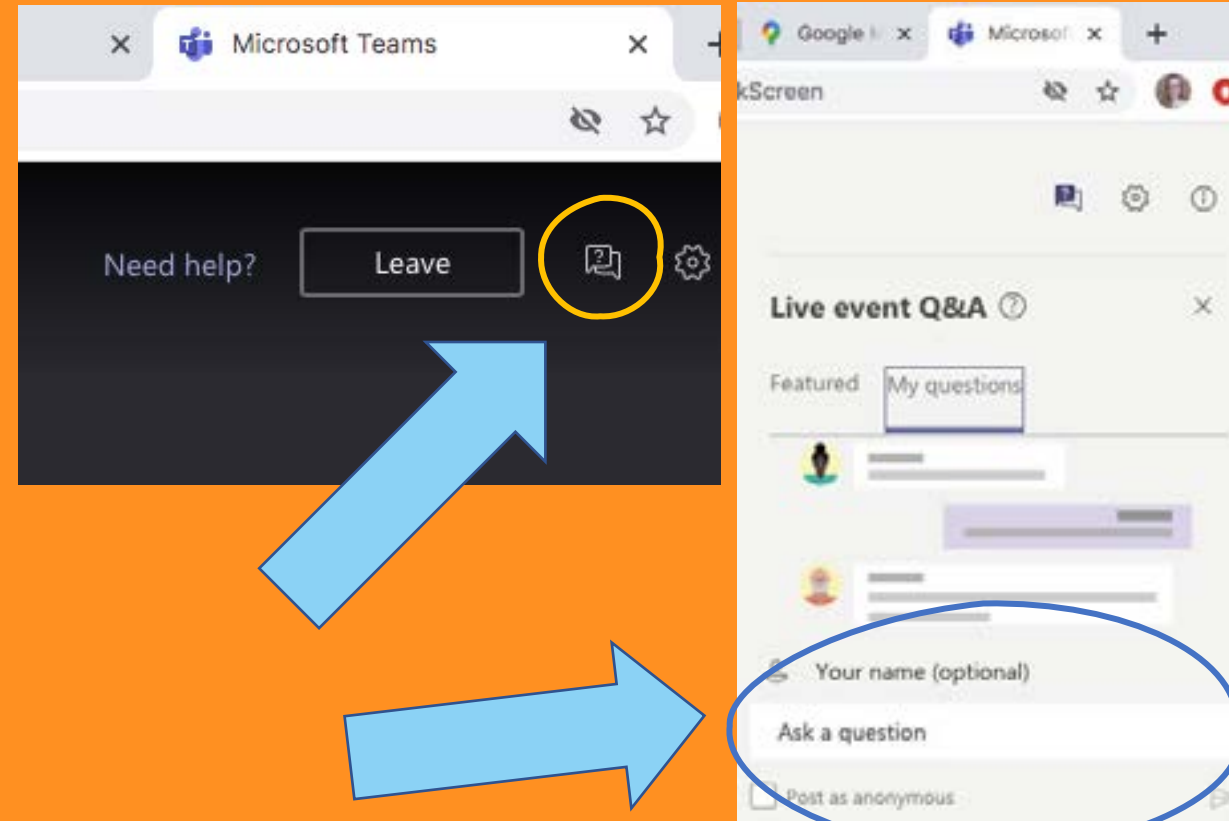
- Email or call the project team
- Sign up for Pentagon City-Crystal City Transportation Update emails to be notified of events

## Questions? Concerns?

Tim Brulle, *Project Manager*  
[tbrulle@arlingtonva.us](mailto:tbrulle@arlingtonva.us)

Nate Graham, *Public Engagement Specialist*  
[nsgraham@arlingtonva.us](mailto:nsgraham@arlingtonva.us)

## How to ask questions during the presentation



# Session Overview

## Agenda

1. Session Introduction
2. Project Design Presentation
3. Q&A Session

## Purpose

Provide an update on the new at-grade alternative approach for the Crystal City Metrorail Station East Entrance project and receive feedback on the entrance design.



Northern Virginia Transportation Authority

This phase of the project is partially funded by Northern Virginia Transportation Authority regional revenues.

# Project Purpose & Goals

- **Create a multimodal hub** – improve the ability to transfer among Metrorail, Metroway, VRE, ART, and Metrobus services and improve pedestrian and bicycle connections
- **Shorten commutes** – increase connections to employment centers
- **Give people space** – relieve congested conditions at the current Metro station entrance and on the station platform
- **Meet accessibility needs** – provide direct access for customers with mobility challenges to areas east of the station



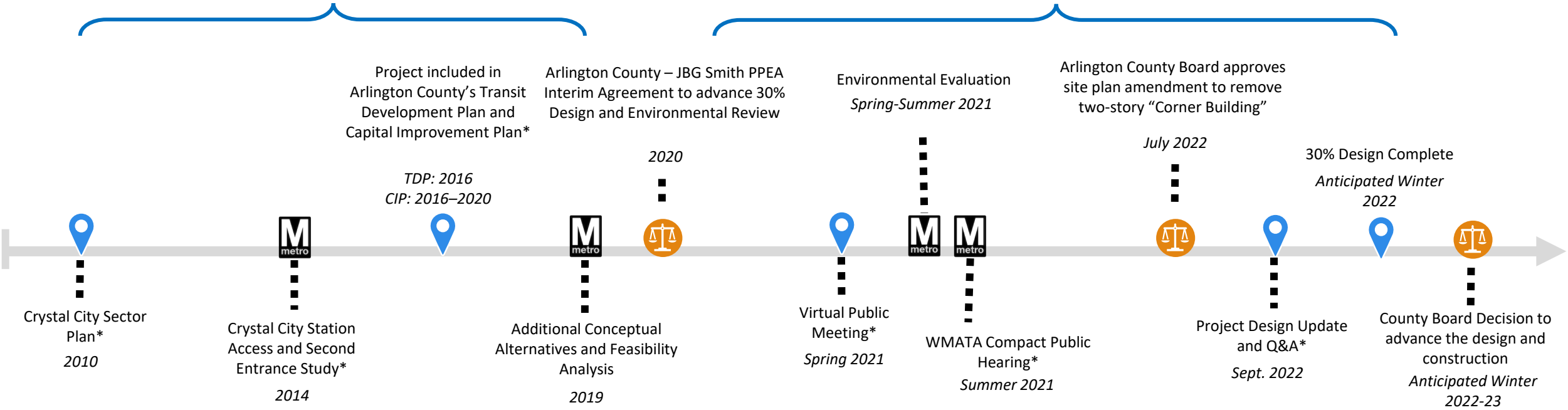
*Project area and multimodal connections*

# Project Basis

## Planning Phase

## 30% Design Phase

\*Included public involvement



## Key Outcomes

Identified the project as a key component of the future vision of Crystal City

Defined the justification for the project, evaluated initial concepts, and identified station facility requirements

Identified the corner of 18<sup>th</sup> Street S. and Crystal Drive as the preferred and most feasible location for a second entrance

Finding of no significant environmental impacts and documented construction impacts mitigation efforts

Received public input regarding key design considerations

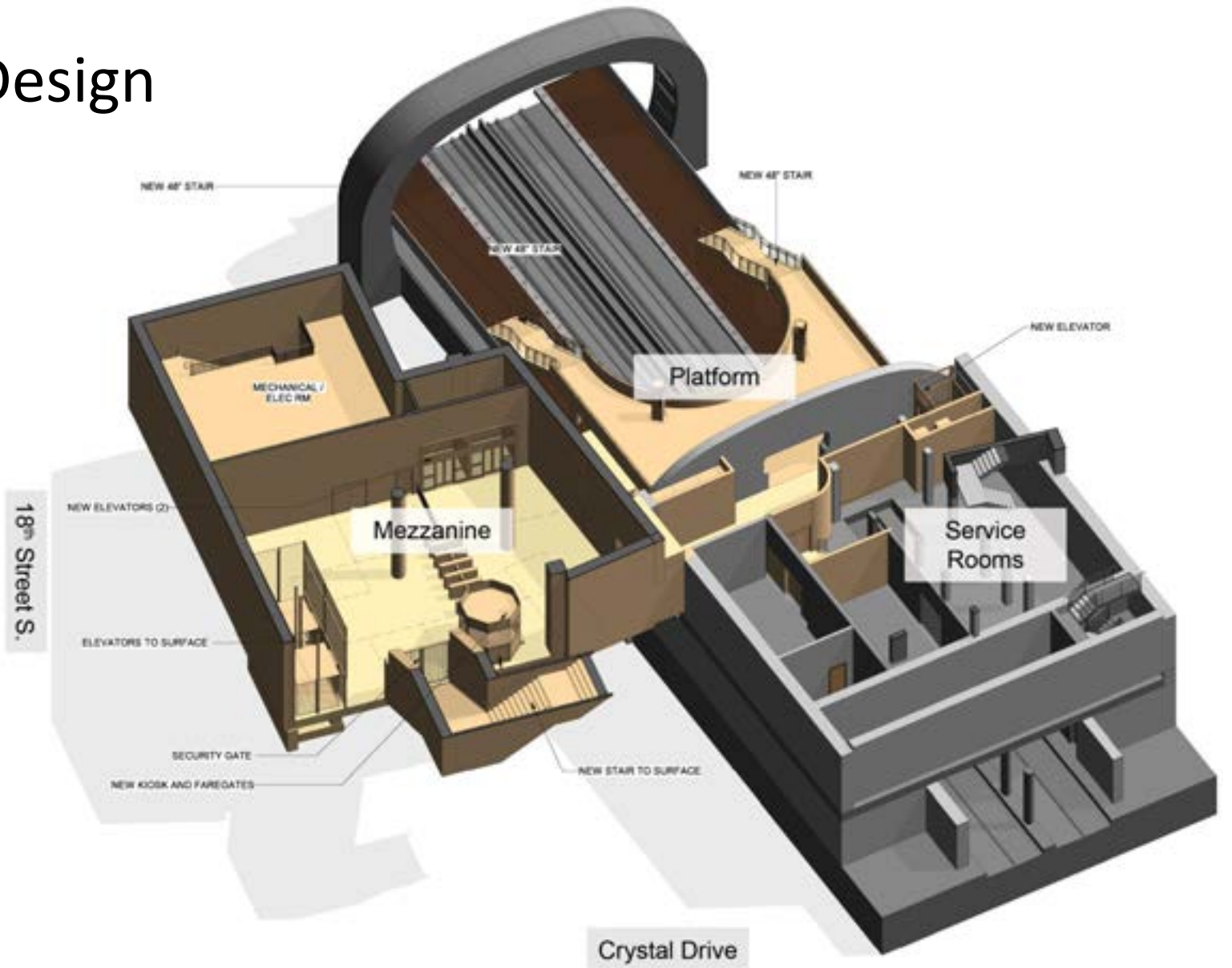
Design pivot to an at-grade station entrance to reduce project costs and provide greater design flexibility for the East Entrance

JBG Smith to provide Arlington County a "Guaranteed Maximum Price" proposal to finalize the design and construction

Visit [projects.arlingtonva.us](https://projects.arlingtonva.us) and search "Crystal City Second Entrance"

# Underground Entrance Design

*Rendering of the previous concept for east entrance mezzanine, service rooms, and platform*



# At-Grade Alternative

## Cost Savings

- Reduced amount of excavation required
- Reduced total number of elevators required from five to three by replacing need to change elevators at mezzanine to access outbound platform with direct street level-to-platform connection
- Removes need to penetrate station vault wall, reducing some of the most complex construction



*New entrance location at 18<sup>th</sup> Street South & Crystal Drive*

# At-Grade Alternative

## Design Intent

- Complement the visual environment of the ongoing development in the neighborhood
- Incorporate identifiable design characteristics consistent with other station entrances in the Metrorail system



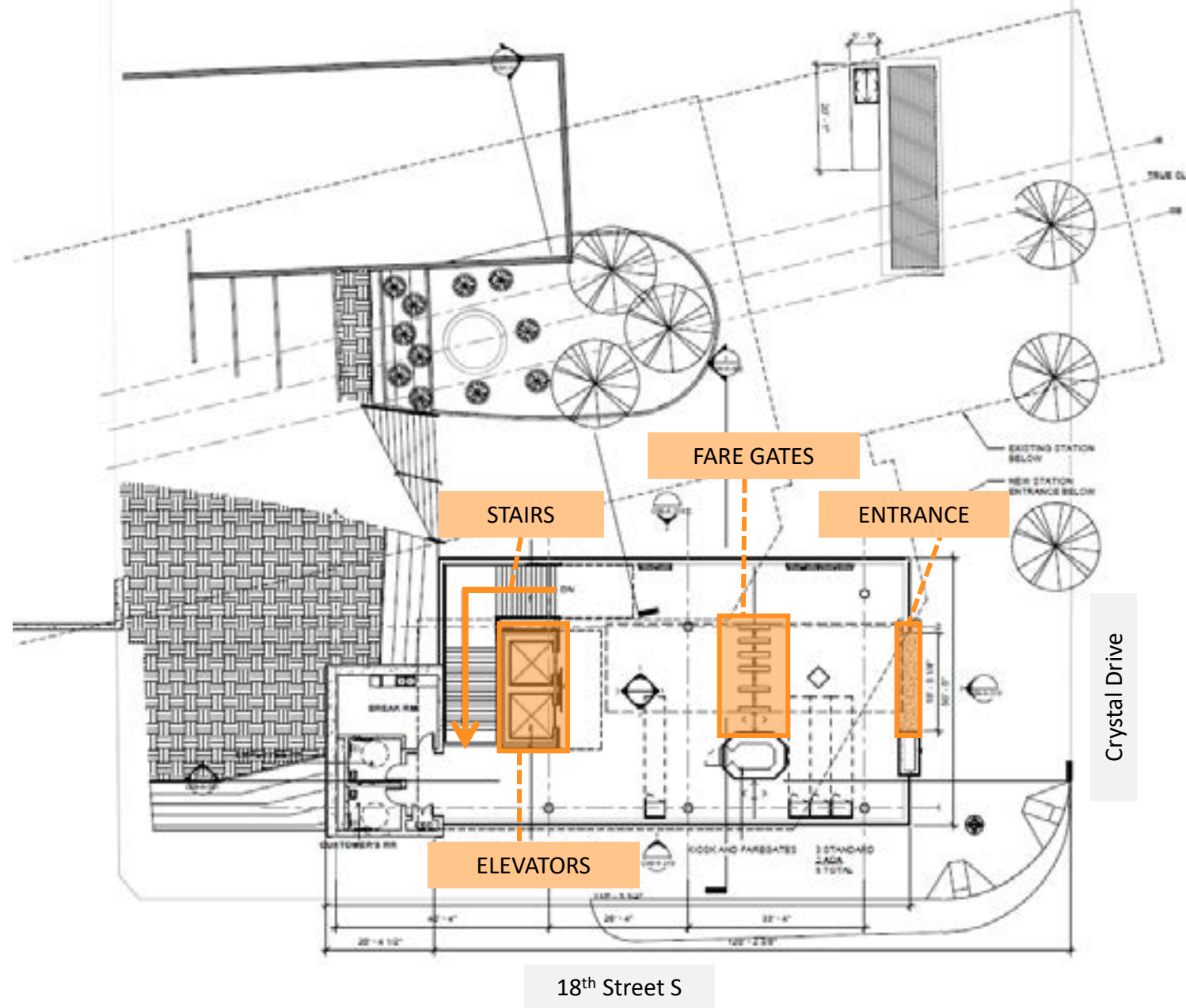
*Crystal City Metrorail Station*



# At-Grade Entrance Design

## Street-Level

- Kiosk and five fare gates
- Stairs to/from mezzanine
- Two elevators to/from mezzanine
- Customer restrooms

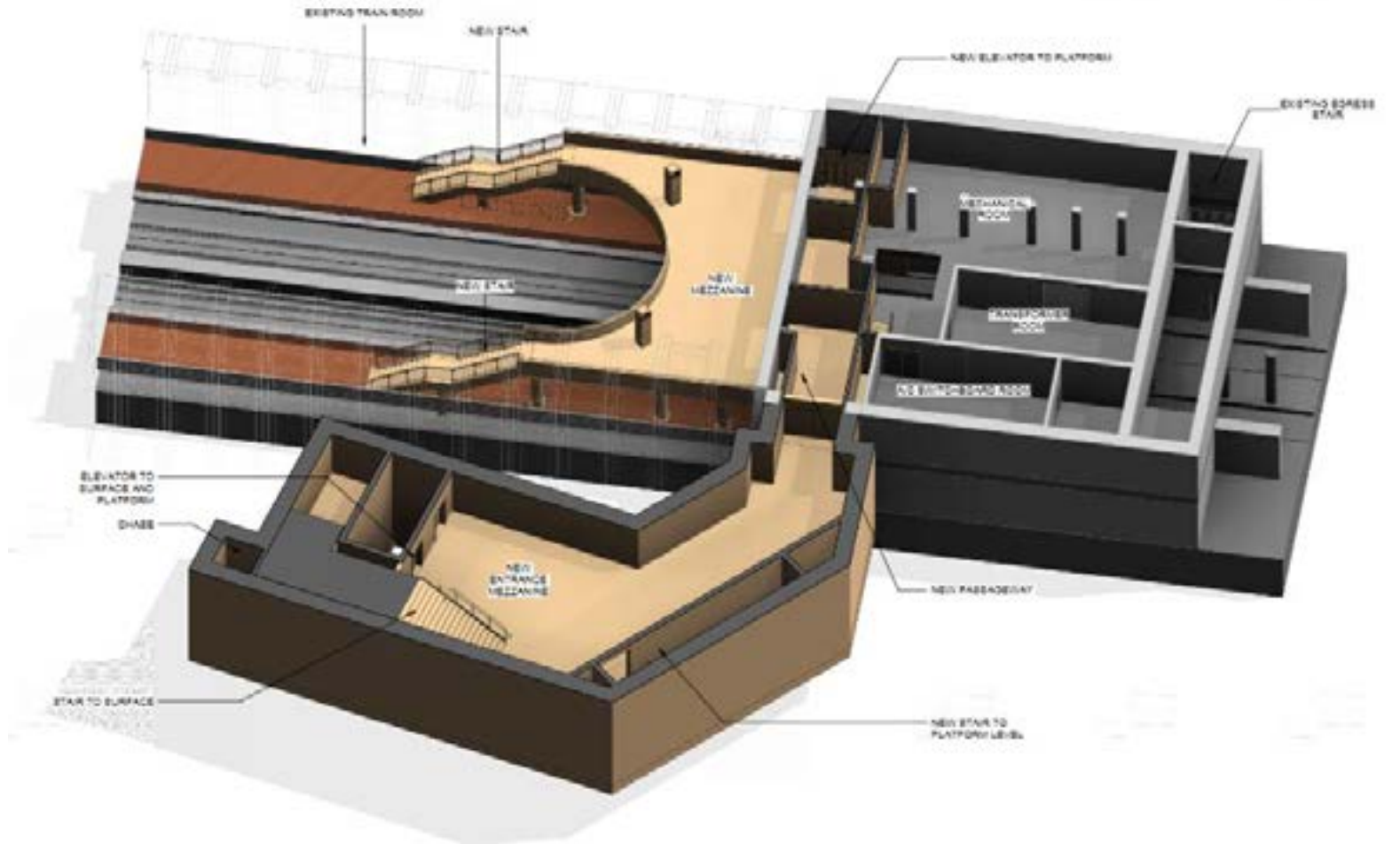


\*The design process is ongoing, and the final design may differ from this plan view of the current 30% design.

# At-Grade Entrance Design

## Mezzanine

- Two stairs to/from outbound platform
- Two elevators to/from street level and outbound platform
- One staircase to/from inbound platform
- One elevator to/from inbound platform
- One staircase to/from street level

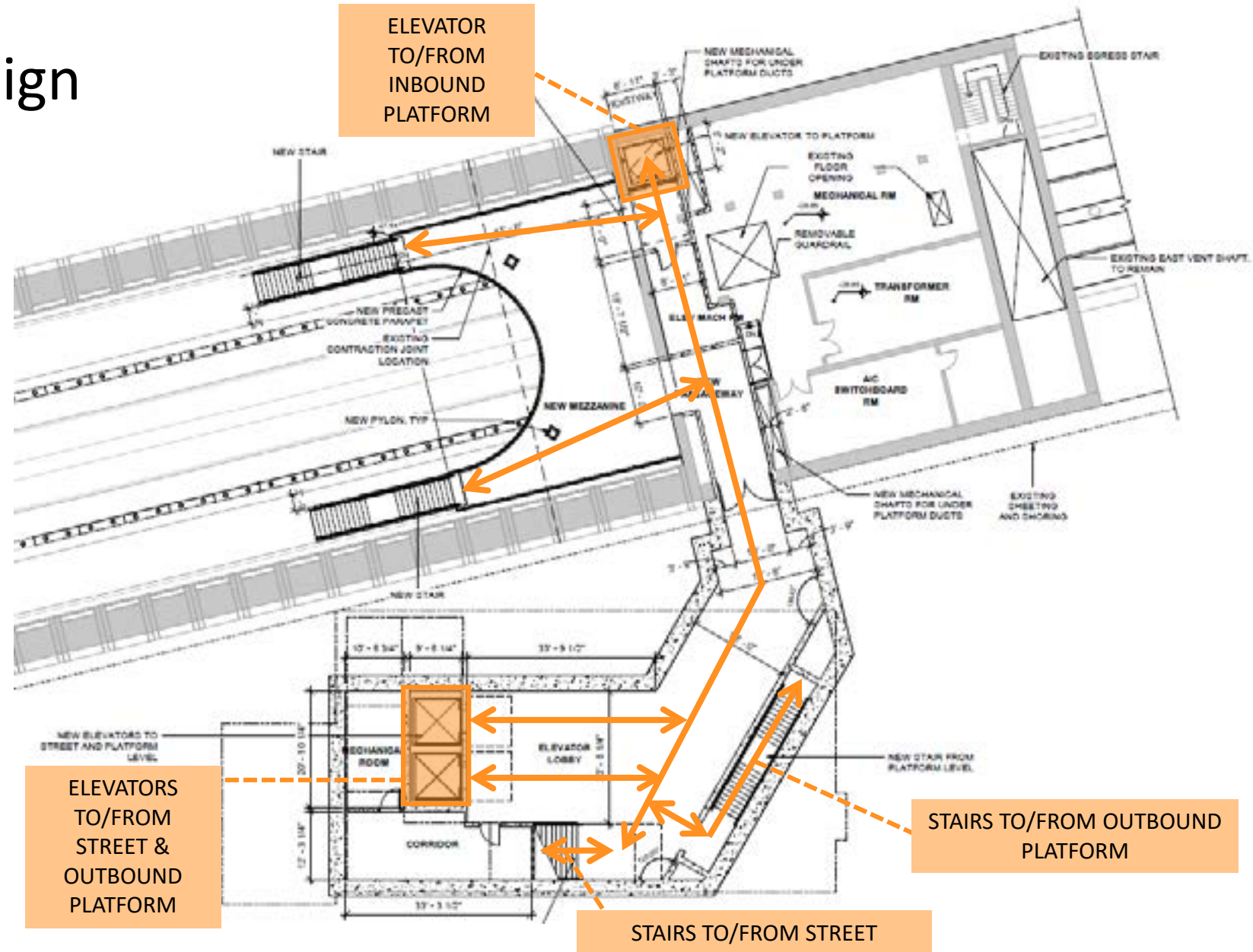


\*The design process is ongoing, and the final design may differ from this plan view of the current 30% design.

# At-Grade Entrance Design

## Mezzanine

- Two stairs to/from outbound platform
- Two elevators to/from street level and outbound platform
- One staircase to/from inbound platform
- One elevator to/from inbound platform
- One staircase to/from street level

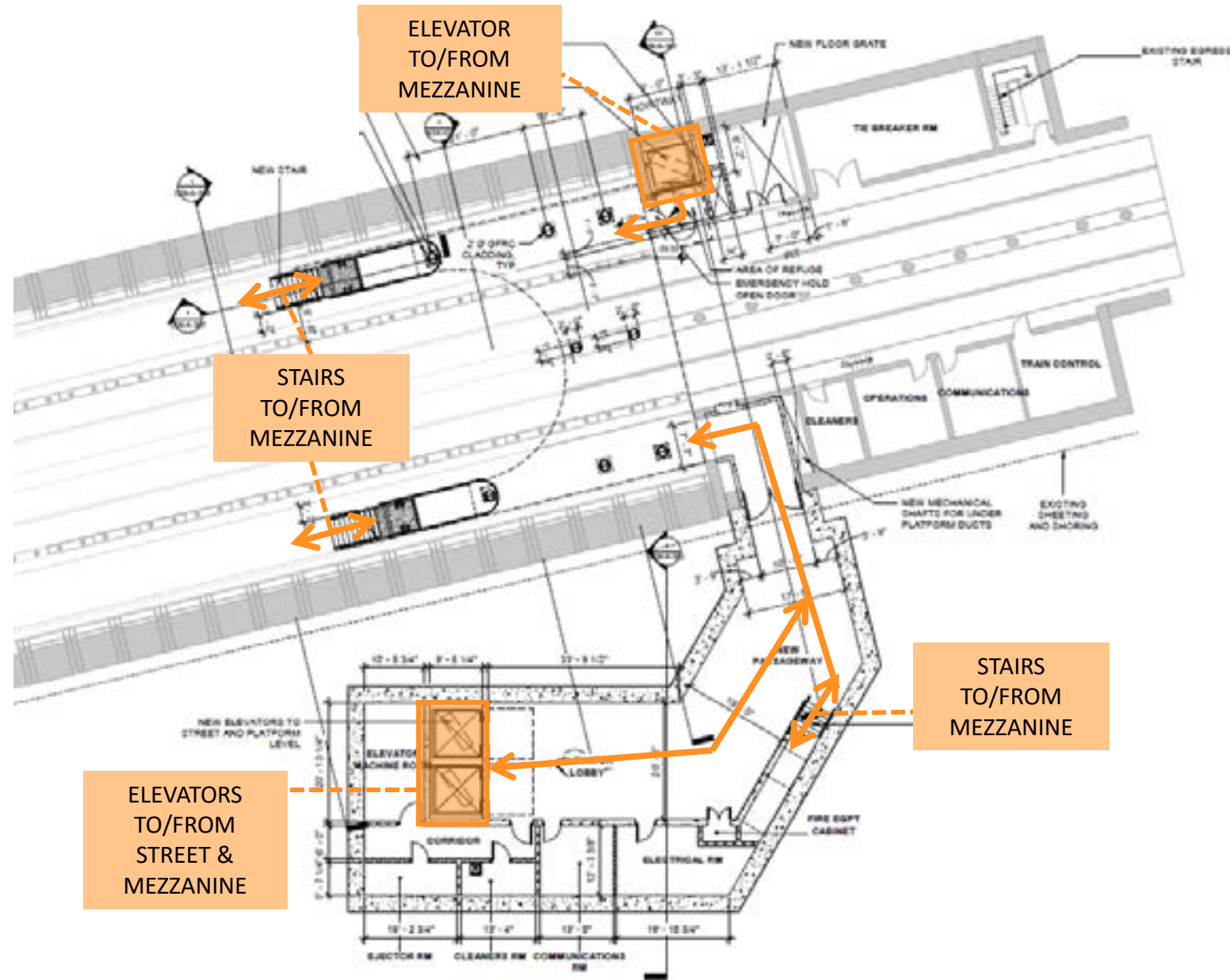


\*The design process is ongoing, and the final design may differ from this plan view of the current 30% design.

# At-Grade Entrance Design

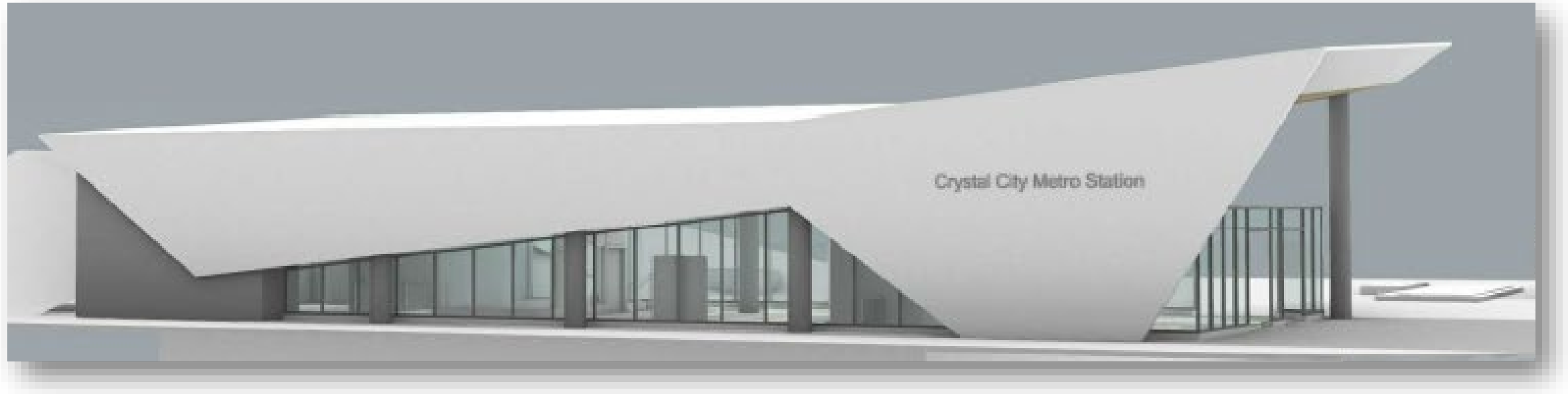
## Platform

- Two stairs to/from outbound platform
- Two elevators to/from street level and outbound platform
- One staircase to/from inbound platform
- One elevator to/from inbound platform



\*The design process is ongoing, and the final design may differ from this plan view of the current 30% design.

# At-Grade Entrance Design

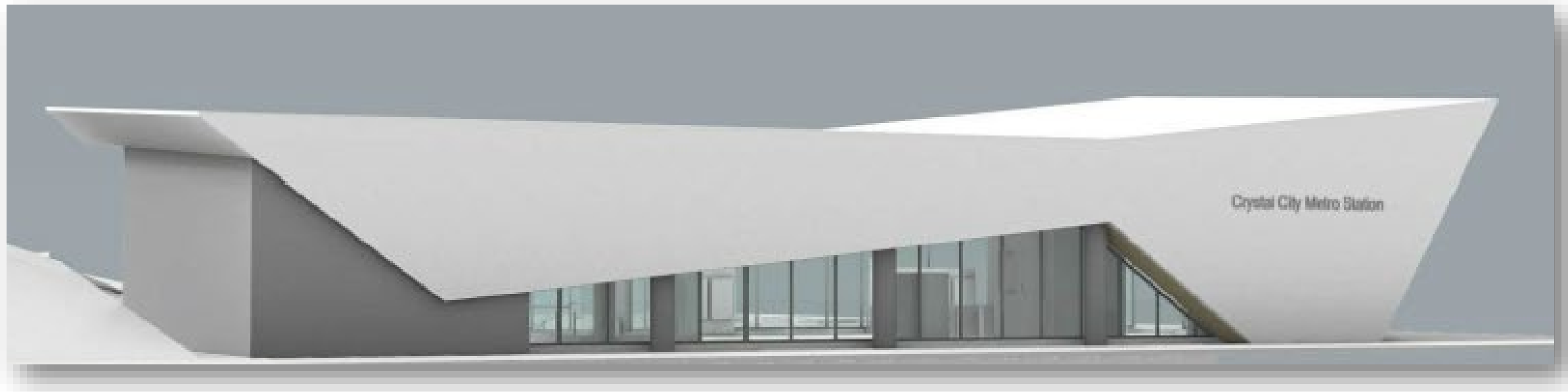


***Rendering\* of the entrance building, looking northwest from corner of 18<sup>th</sup> Street S and Crystal Drive***

\*The design process is ongoing, and the final design may differ from this rendering of the current 30% design.

Visit [projects.arlingtonva.us](https://projects.arlingtonva.us) and search "Crystal City Second Entrance"

# At-Grade Entrance Design



***Rendering\* of the entrance building, looking northeast from 18<sup>th</sup> Street S***

\*The design process is ongoing, and the final design may differ from this rendering of the current 30% design.

Visit [projects.arlingtonva.us](https://projects.arlingtonva.us) and search "Crystal City Second Entrance"

# At-Grade Entrance Design



***Rendering\* of the entrance building, looking southwest from Crystal Drive***

\*The design process is ongoing, and the final design may differ from this rendering of the current 30% design.

Visit [projects.arlingtonva.us](https://projects.arlingtonva.us) and search “Crystal City Second Entrance”

# Adjacent Plans & Projects



- Crystal City Metrorail Station East Entrance
- 18th Street South
- Metro Market Square
- Crystal City Bike Network
- 1900 Crystal Drive

NOTES  
 1. PARK AREA OUTLINED IN THIS PLAN IS 45,168 SF. A MINIMUM OF 43,900 SF OF PARK SHALL BE PROVIDED WITHIN THE AREA OUTLINED IN THE PLAN.



# Adjacent Plans/Projects

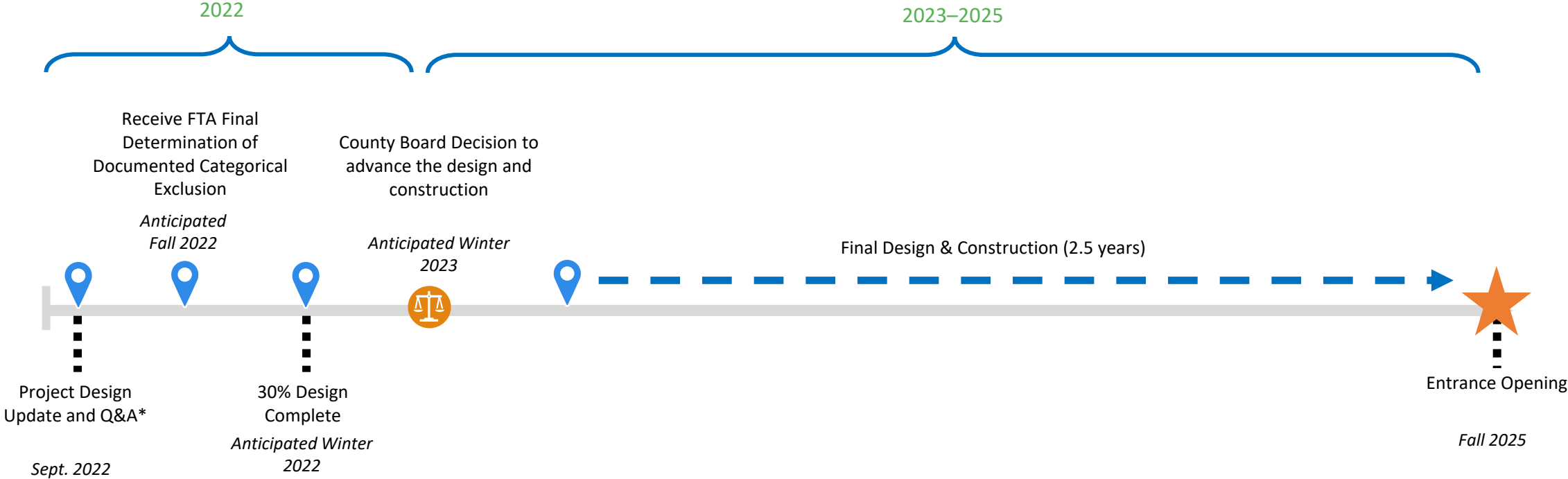
## **Adjacent projects:**

- Metro Market Square
- Crystal City Bicycle Network
- 18th Street South
- Private Development

## **Key coordination considerations:**

- Curbside uses including drop-off/pick-up, bicycle facilities, etc.
- Multimodal connections
- Amenity zone (between sidewalk and curb)
- Minimizing construction disruptions

# Next Steps



Visit [projects.arlingtonva.us](https://projects.arlingtonva.us) and search "Crystal City Second Entrance"



# Q&A Session

Opportunity to ask questions and provide feedback on the proposed Crystal City Metrorail Station East Entrance design update:

- Is anything missing?
- Other comments and considerations?

# With You This Evening



Tim Brulle  
*Arlington County*



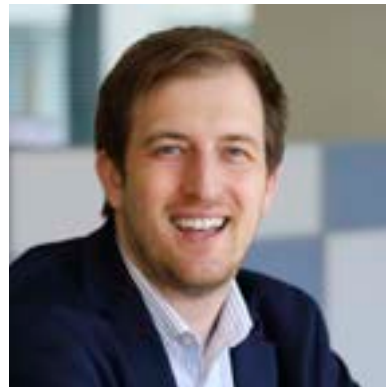
Robin McElhenny  
*Arlington County*



Nate Graham  
*Arlington County*



Brian Roach  
*JBG SMITH*



Drew Morrison  
*Contractor, VHB*

**A recording of this virtual meeting and the presentation slides will be added to the Project website, listed below.**

**Contact information for County Project is also available on the website.**