

# Agenda

---

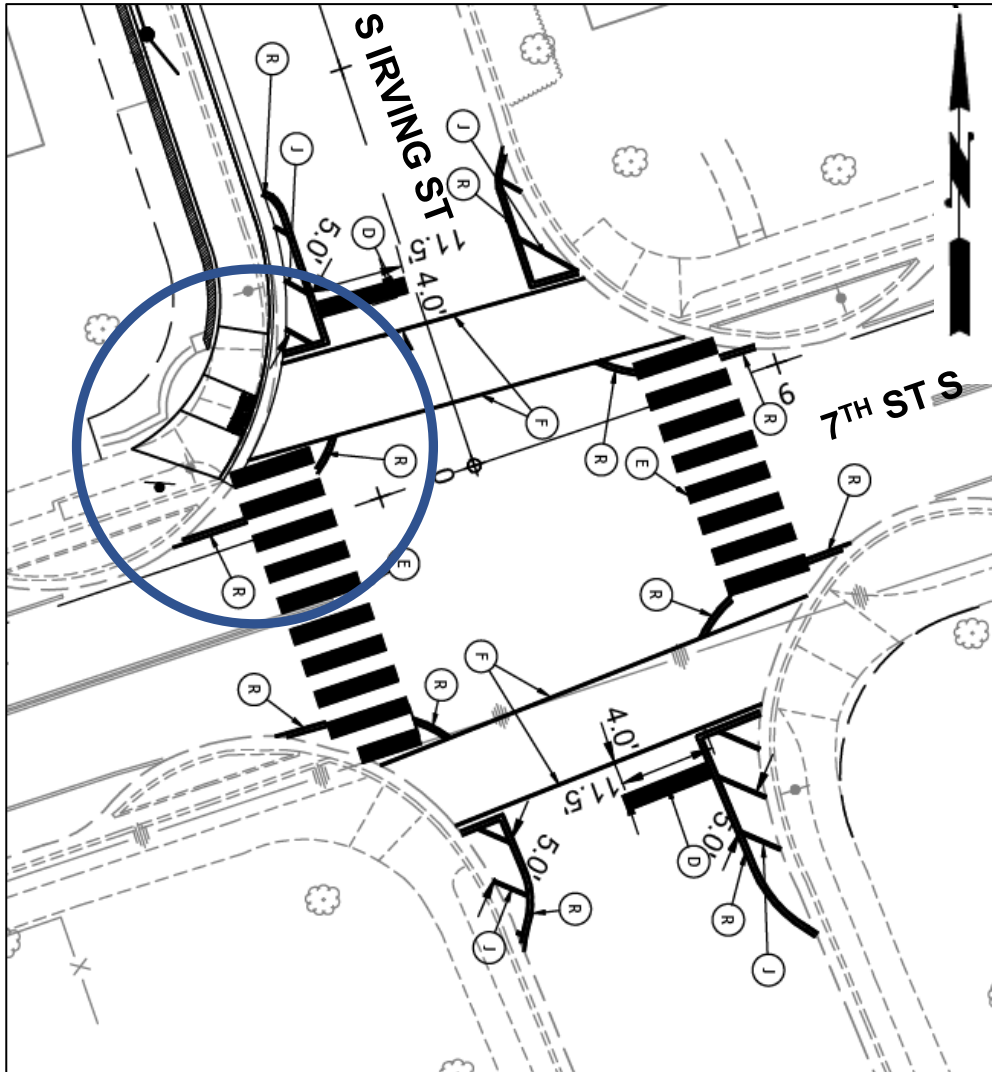
- **S Irving Street: Scope and Cost updates**
  - **Status: 30% Design, awaiting comments**
- **28<sup>th</sup> Street S: Updates**
  - **Status: 30% Design, comments addressed**
- **N Fairfax Dr: Scope and Cost Updates**
  - **Status: Concept design**

# S Irving St (from 6<sup>th</sup> St S to 7<sup>th</sup> St S)

Status: 30% Design, comments addressed



# S Irving Street & 7<sup>th</sup> St S: Previous Scope



- Upgrade northwest curb ramp to current Americans with Disabilities (ADA) standards
  - No upgrade to remaining curb ramps
- Add marked crosswalks on each leg
  - Crosswalks not aligned with proposed crosswalks

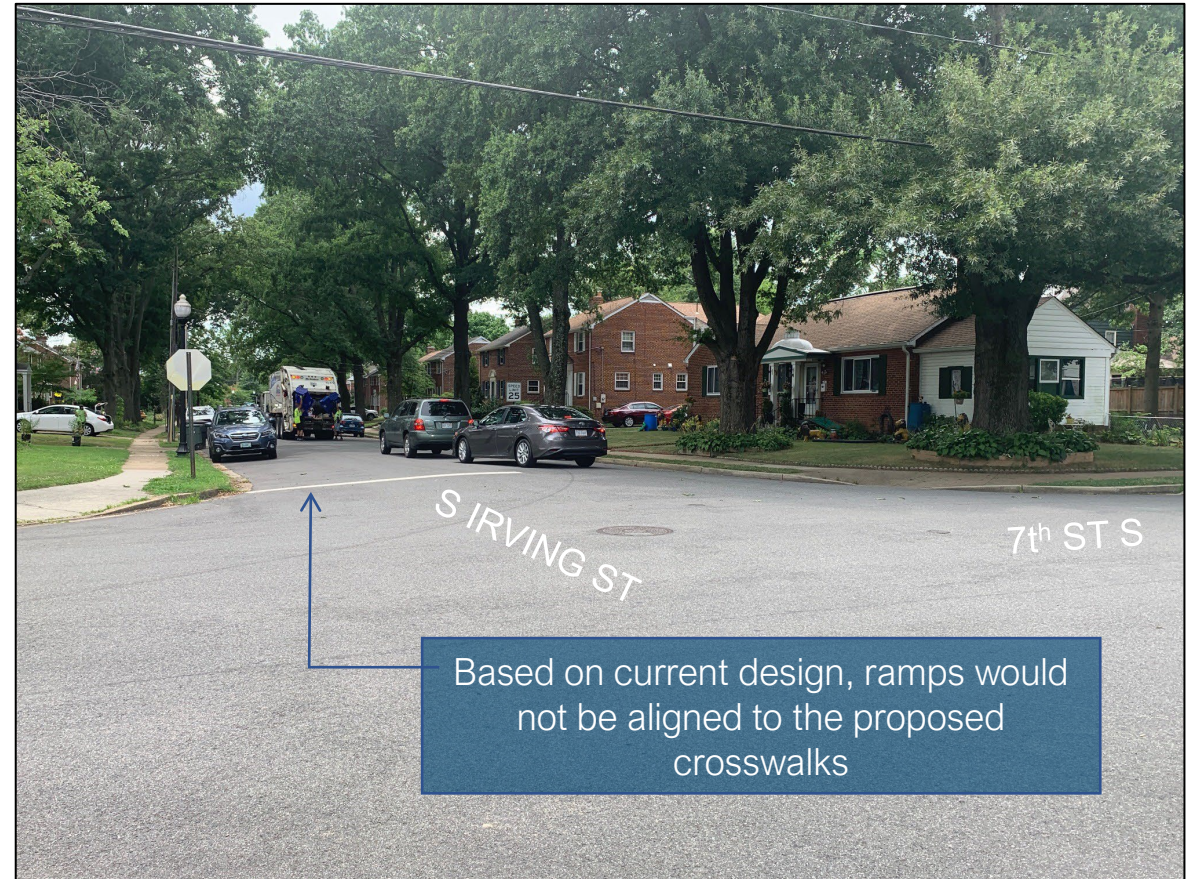
*Edit: The previous version of this presentation incorrectly had '6<sup>th</sup> St S' instead of '7<sup>th</sup> St S'. All instances have been corrected.*



# S Irving Street & 7<sup>th</sup> St S: Existing Conditions



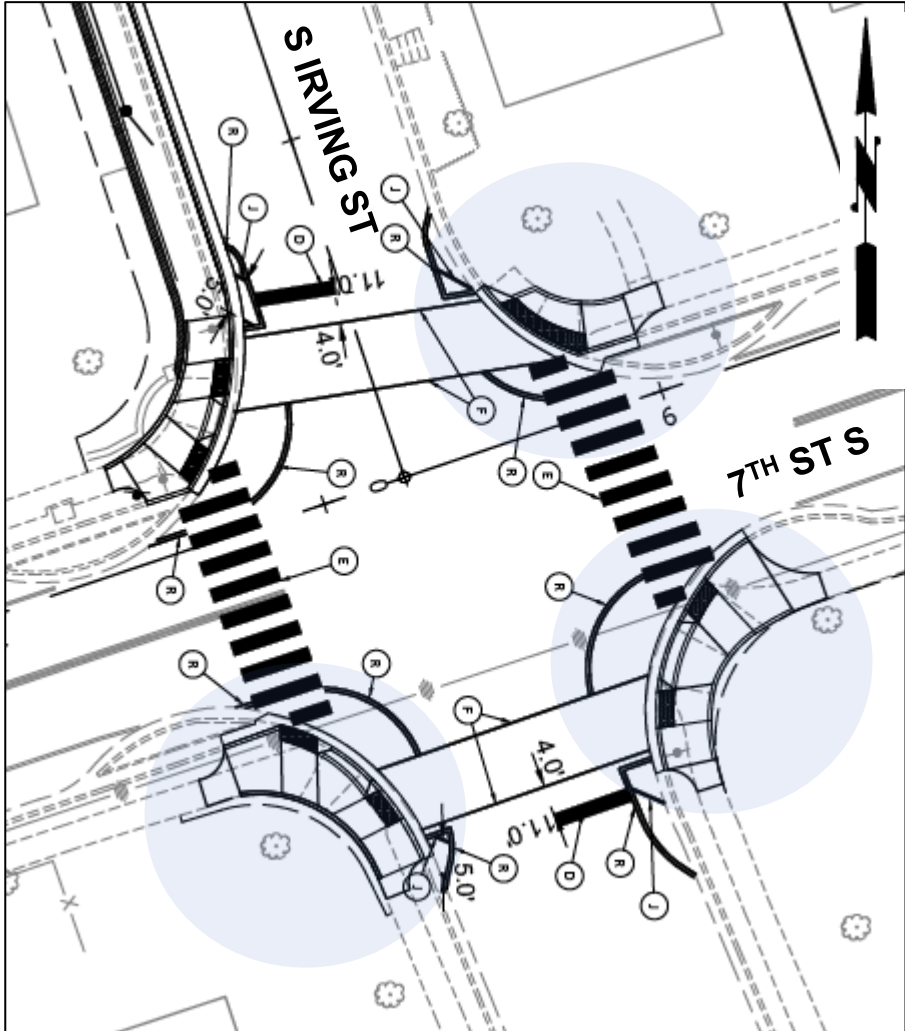
Northeast corner at intersection of Irving St and 7<sup>th</sup> St



South leg at intersection of Irving St and 7<sup>th</sup> St



# S Irving Street & 7<sup>th</sup> St S: Updated Scope



- Upgrade all curb ramps at intersection to current ADA standards
- Add marked crosswalks on each leg
  - Crosswalks aligned with proposed ramps
- Improve sidewalk accessibility for people with mobility restrictions

# S Irving Street & 7<sup>th</sup> St S: Updated Scope Impact



- Work with three additional property owners to obtain Temporary Construction Easements
- Minimize impact during construction of large tree on southwest corner → Working with Forestry team

# Total Estimate: Cost Comparison

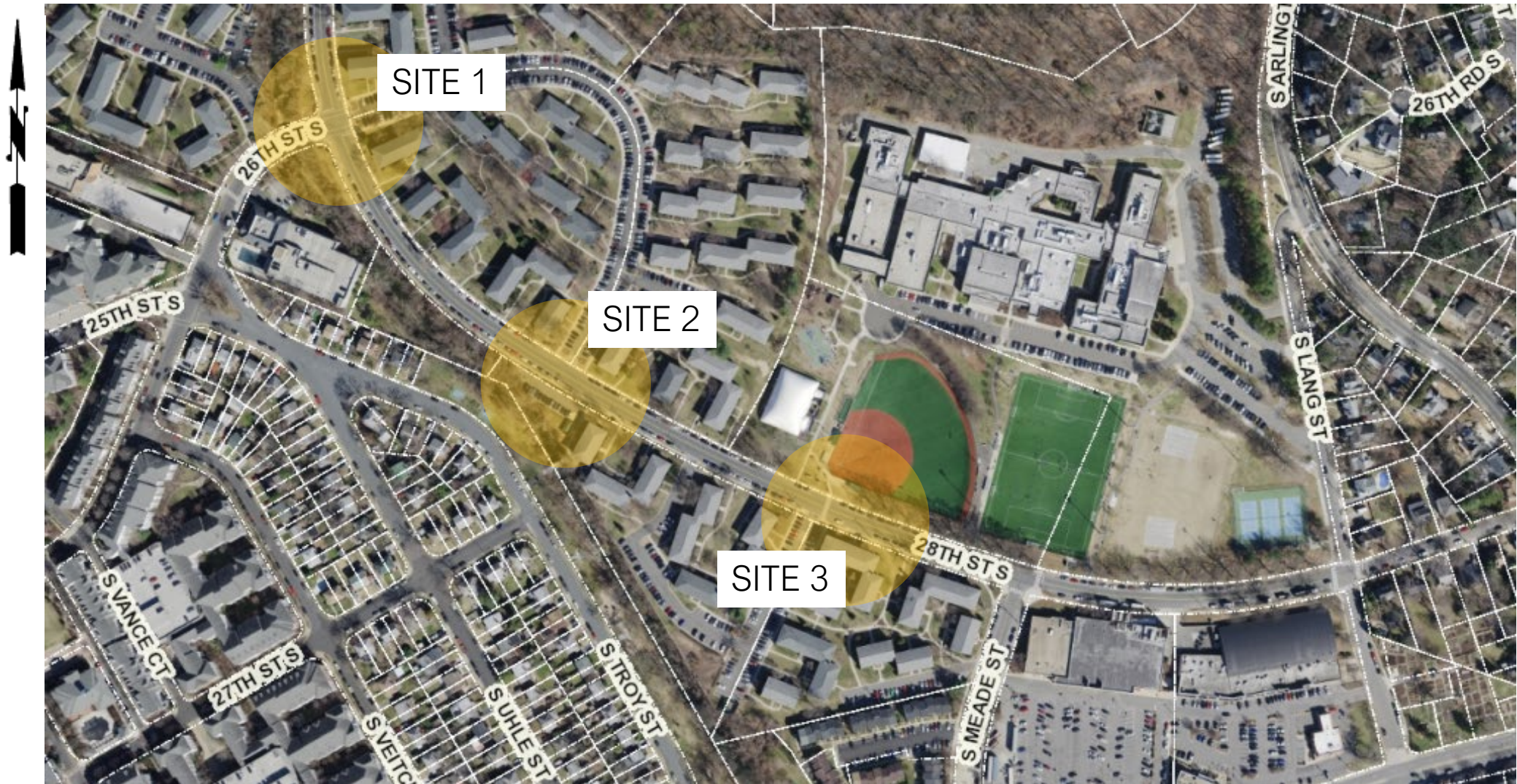
Funding Cost Estimate	Previous Scope Estimate (30% Design)	Updated Scope Estimate (30% Design)
\$666,000	At S Irving St/7 <sup>th</sup> St S: Upgrade northwest curb ramp	At S Irving St/7 <sup>th</sup> St S: Upgrade all curb ramps

Additional cost from funding estimate:  
**\$34,000**



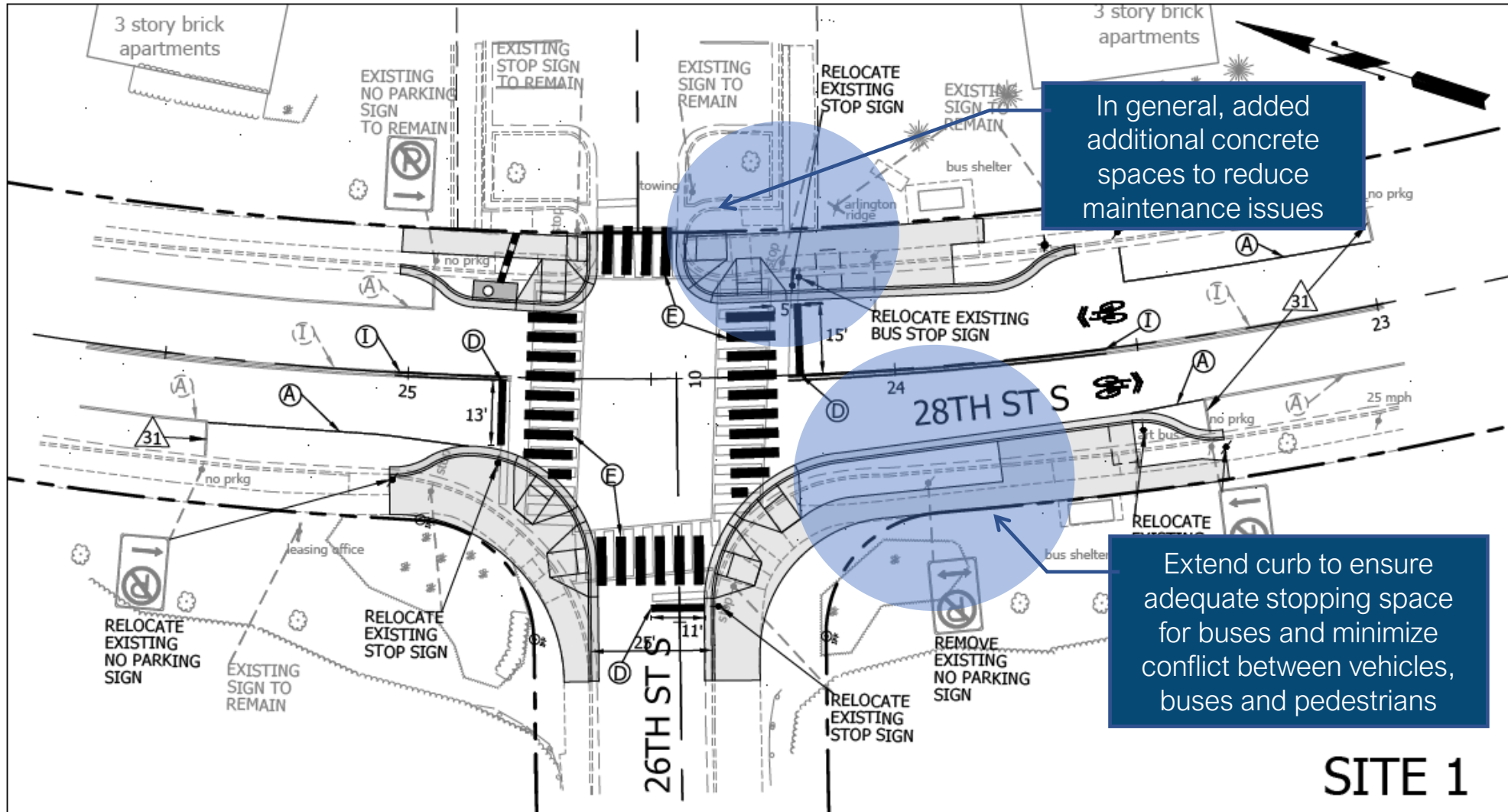
# 28<sup>th</sup> St S (from 26<sup>th</sup> St S to Meade St)

Status: 30% Design, comments addressed

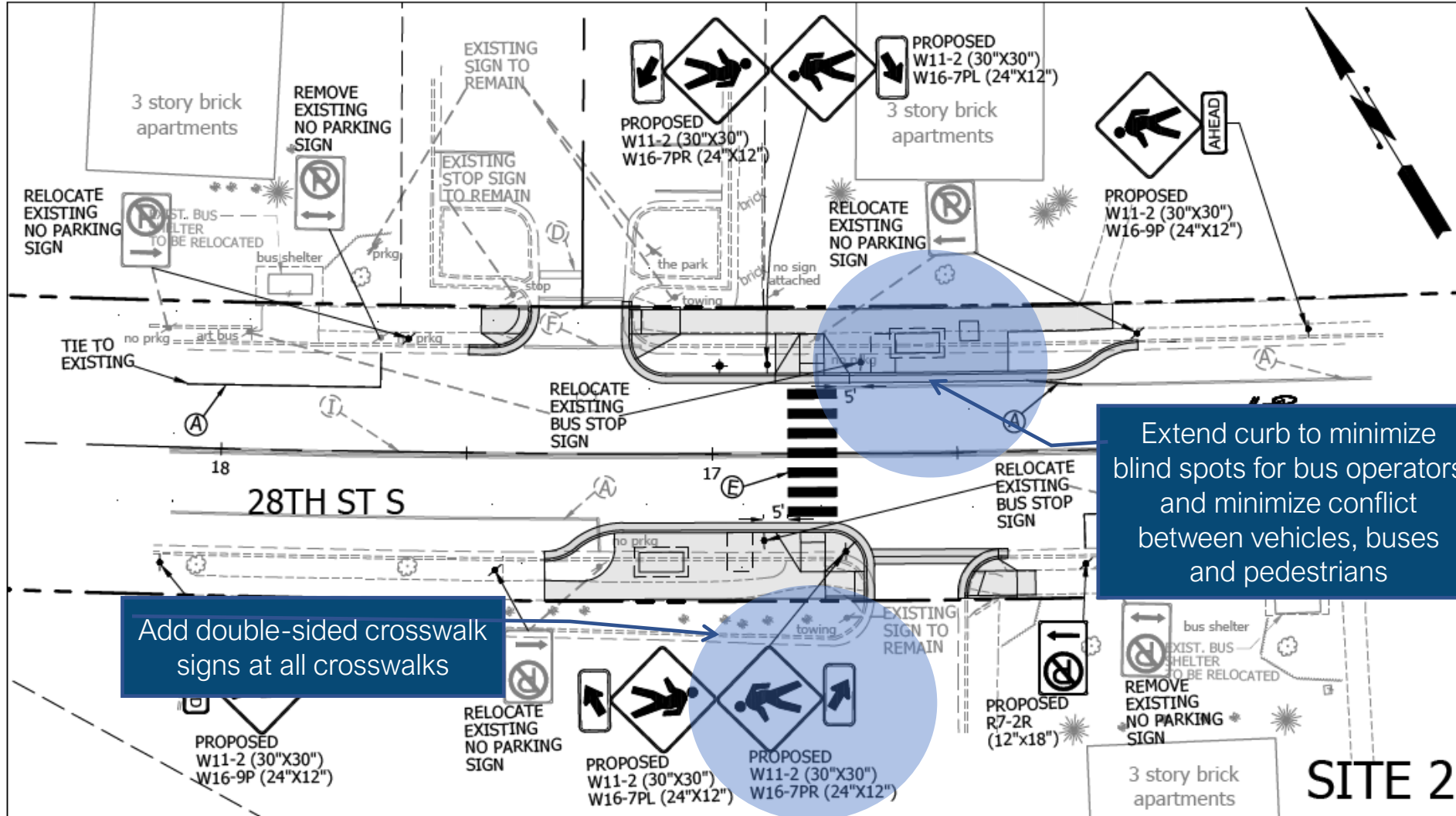




# 28<sup>th</sup> St S: Site 1 Updates per Comments

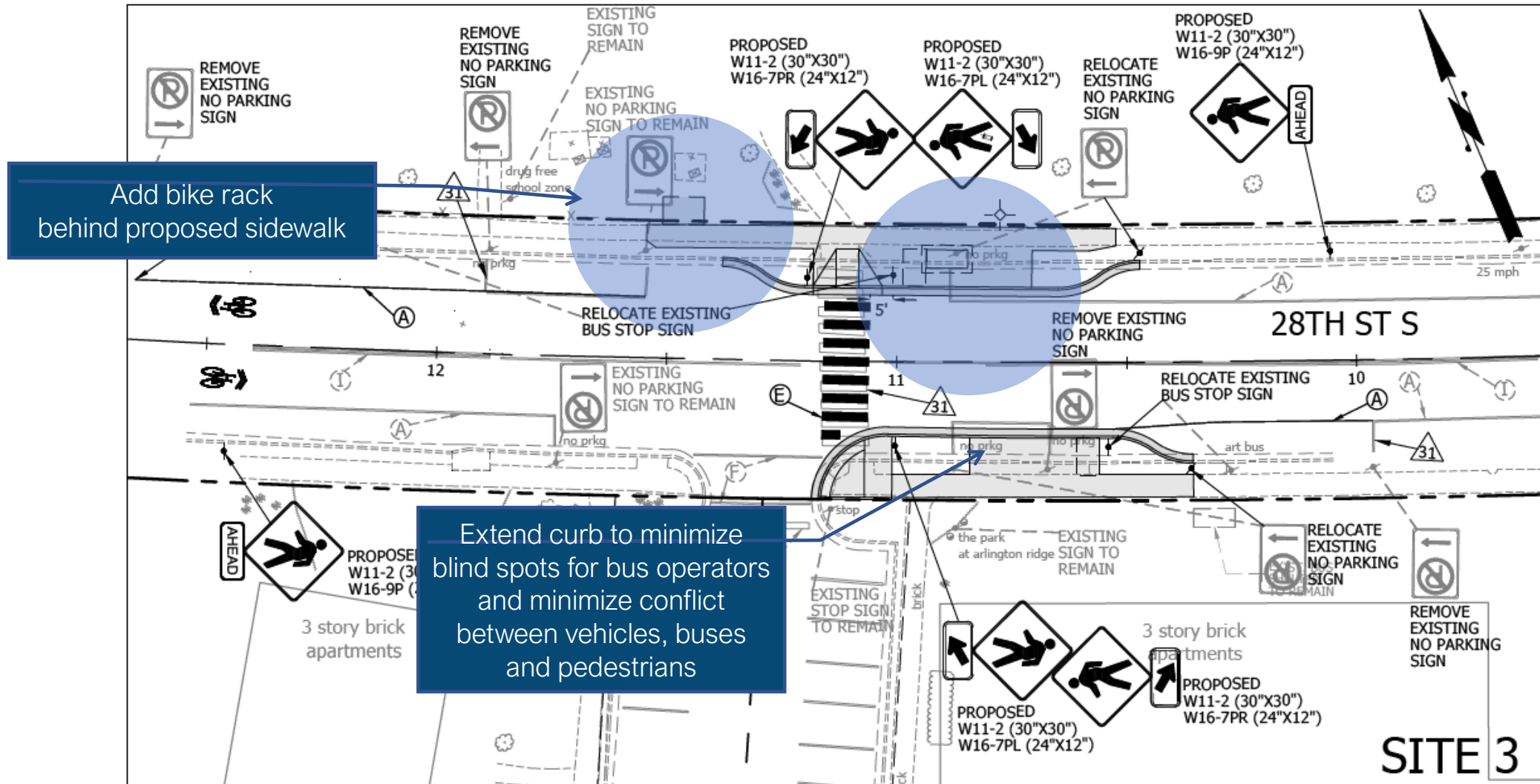


# 28<sup>th</sup> St S: Site 2 Updates per Comments





# 28<sup>th</sup> St S: Site 3 Updates per Comments



# 28<sup>th</sup> St S: Impacts from Comments

- Cost increase
- Parking

Previous Net Increase in Parking	8 spaces
Revised Net Increase in Parking (Comments addressed)	7 spaces



# 28th St S

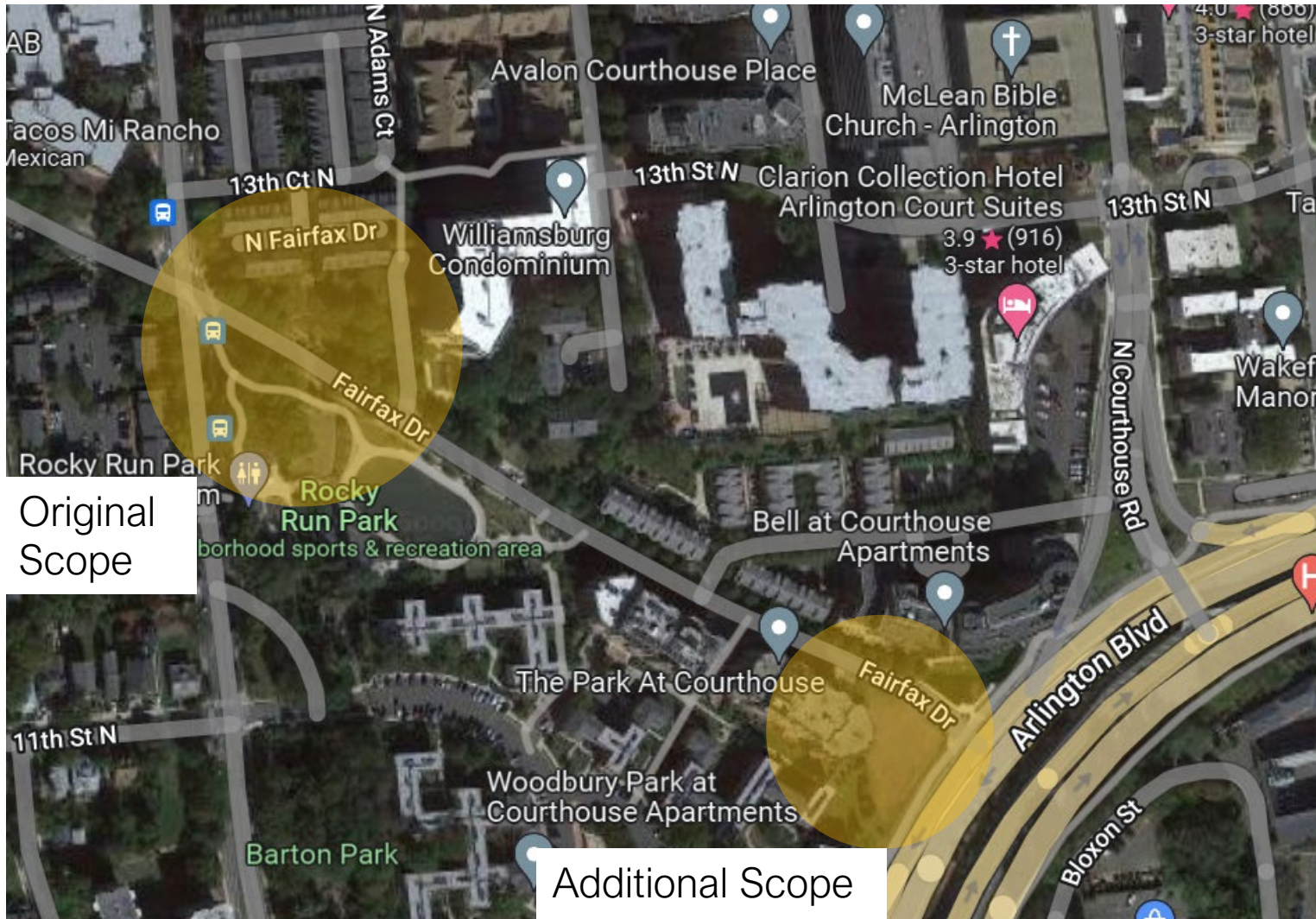
## Total Estimate: Cost Comparison

Funding Cost Estimate	On-Call Contractor Estimate (30% Design)	Bid Estimate (30% Design)
<b>\$880,500</b>	Approx. \$803,000	Approx. \$895,000

Additional cost from funding estimate:  
**\$14,500**

# N Fairfax Dr (Arlington Blvd to N Barton St)

Status: concept design

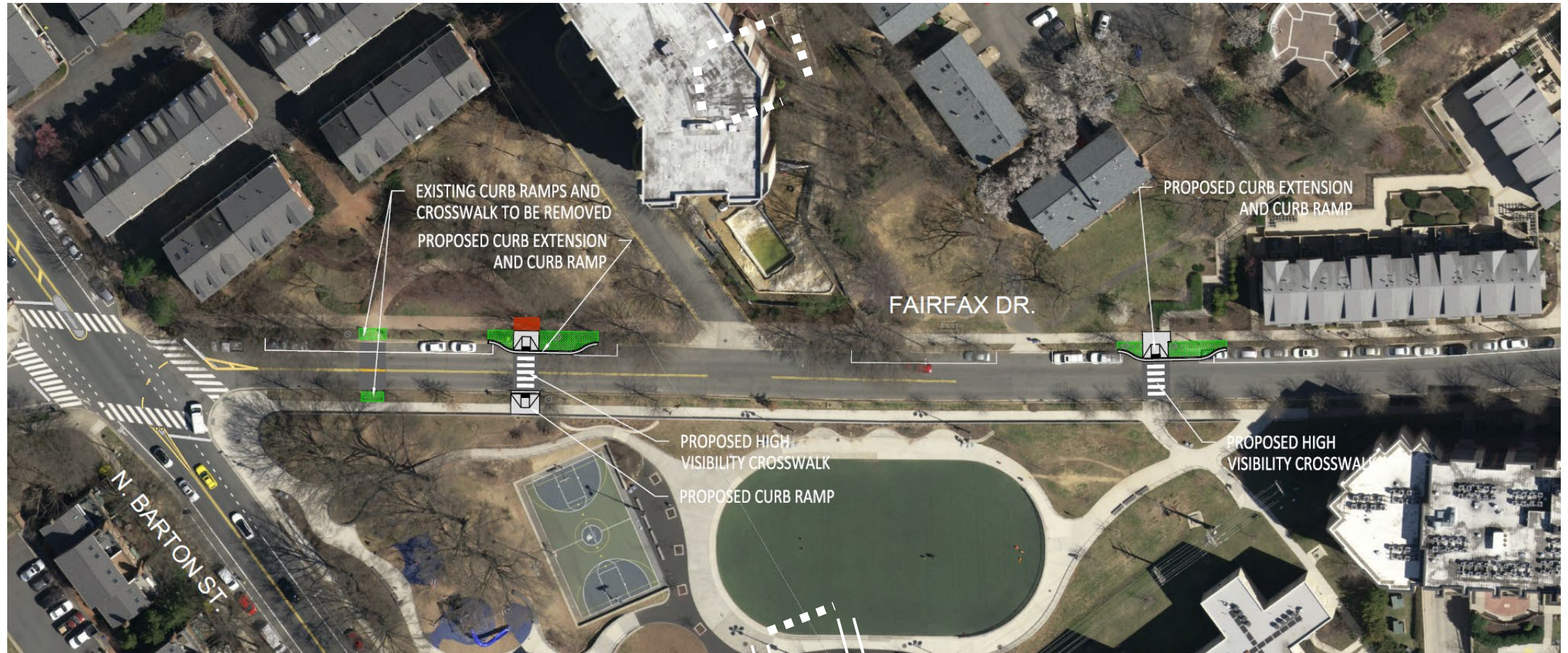


Original Scope

Additional Scope



# N Fairfax Dr – Original Scope





# N Fairfax Dr – Proposed Additional Scope



# N Fairfax Dr

## Total Estimate: Cost Comparison

Funding Cost Estimate	Previous Scope Estimate	Added Scope Estimate
\$90,000	Consolidate 3 existing mid-block crossing into 2 improved crossings	Complete missing sidewalk on south side of N Fairfax Dr
	Approx. \$90,000	Approx. \$99,000 construction cost \$145,000 incl. soft costs Additional cost from funding estimate: <b>\$55,000</b>