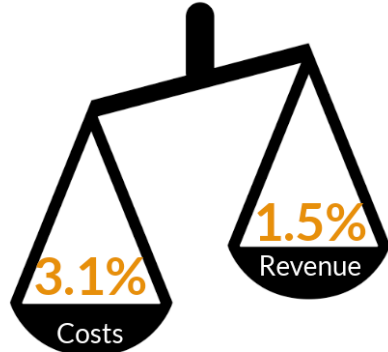


UNDERSTANDING ARLINGTON'S FY2020 BUDGET

Another tough decision-making process lies ahead for Arlington County, as it looks to balance revenues and expenditures for the coming fiscal year.

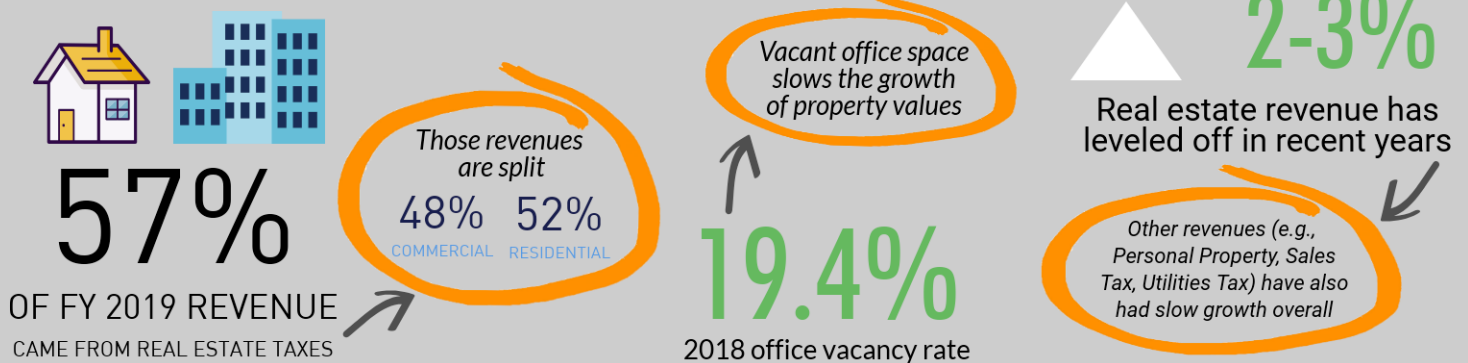
\$20M-\$35M

GAP ANTICIPATED IN THE FY2020 BUDGET



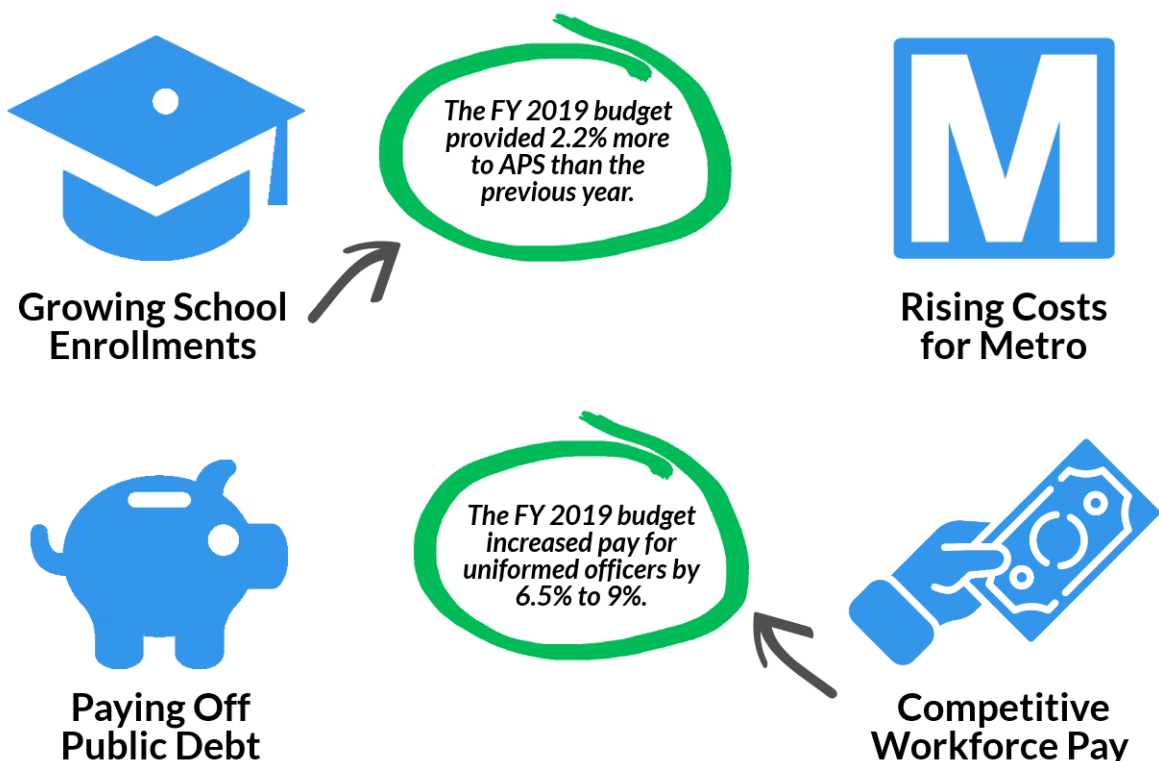
Revenue growth for FY 2020 is not keeping pace with growth in basic costs.

Revenue: Growing but Slowing



Additional Budget Challenges

For the next several years, Arlington County must continue to address growing budget pressures as it maintains its commitment to fund County and community priorities.



UNDERSTANDING ARLINGTON'S FY2020 BUDGET

Closing the Gap












Addressing the shortfall in the FY 2020 could require cuts to County services. Schools, public safety, and human services make up more than half of the overall budget.

\$1.276B

TOTAL IN FY 2019

*1.8% increase over previous year



| | | | |
|--|---|---|--|
|  Schools \$500.83M |  Environmental Services \$99.17M |  Debt/Capital \$67.8M |  Metro \$40.6M |
|  Public Safety \$146.47M |  Constitutional Officers & Courts \$75.55M |  Parks & Rec, Libraries \$56.75M |  Planning & Development \$20.18M |
|  Human Services \$138.91M |  Non-Departmental/Regional Funds \$72.8M |  Management & Administration \$50.5M | |

Revenue Options on the Table

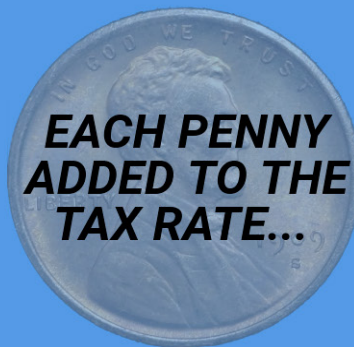
Avoiding significant service cuts would require raising taxes or fees, potentially including taxes on residential and commercial real estate. Here's what that would mean.

CURRENT REAL ESTATE TAX RATE

\$0.993

per \$100 of assessed value

*\$1.006 with stormwater tax included

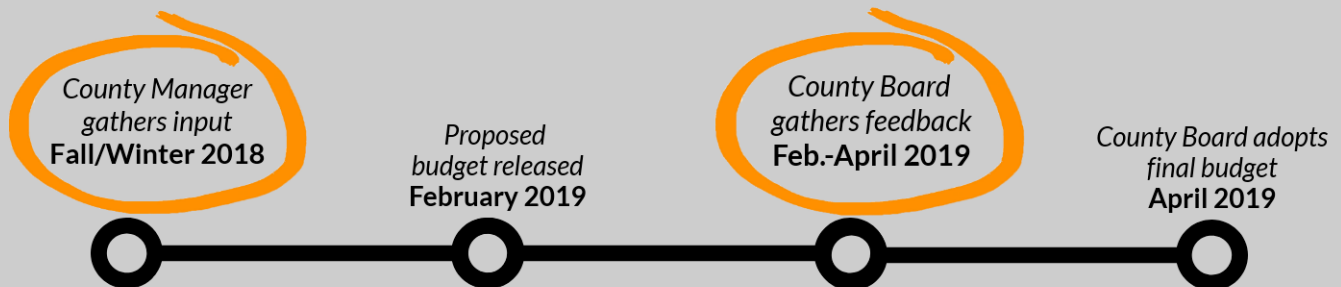


EACH PENNY ADDED TO THE TAX RATE...

- ✓ Yields \$7.6M in revenue
- ✓ Adds \$63/year to the average homeowner's tax bill

WHAT WE NEED FROM YOU

There are two key public input opportunities in the budget process.



LEARN MORE:
BUDGET.ARLINGTONVA.US

