

ARLINGTON COUNTY PROFILE

OVERVIEW OF ARLINGTON

Arlington County is located in northern Virginia, directly across the Potomac River from Washington, D.C. The County encompasses 25.8 square miles of land, which was originally split off from Fairfax County in 1801 and ceded by Virginia to be included in the ten-mile square Federal District. In 1847, however, Congress allowed the land to return to the jurisdiction of Virginia following a vote in favor of retrocession by its members. This area was then known as Alexandria City and Alexandria County. In 1920, to avoid confusion, the county was renamed Arlington County.

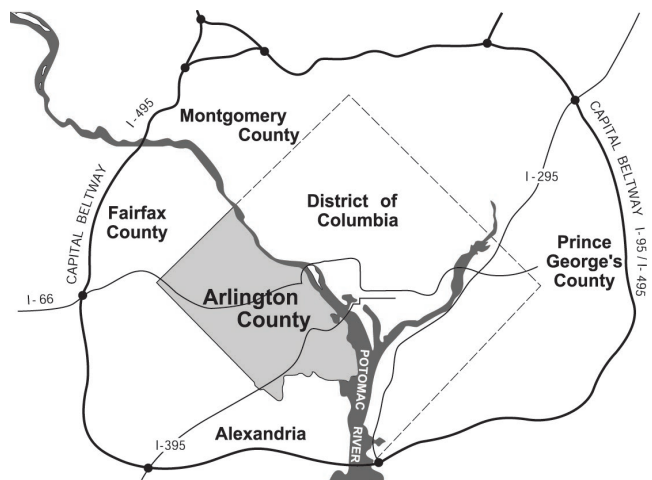
Annexation of any part of Arlington County by neighboring jurisdictions is prohibited by present law unless the entire County is annexed with the approval of County voters. There are no jurisdictions with overlapping debt or taxing powers. The water and sewage systems are operated on a self-supporting basis by the County government.

Arlington's location in the center of the Washington metropolitan region, just five minutes from Washington by car or Metrorail, has made the County a highly desirable business and residential location. Arlington has maintained high-quality residential neighborhoods while supporting well-managed growth. High-density commercial and residential development is focused around Metro stations in the Rosslyn-Ballston corridor and the Richmond Highway corridor, which includes both Pentagon City and Crystal City.

Arlington County has an estimated 2021 population of 234,200, an increase of 12.8 percent over the 2010 population. Additionally, Arlington is home to an estimated 231,500 jobs, as of January 1, 2020.

Almost all land in Arlington County has been developed. This development consists of extensive single-family residential areas, as well as commercial, office, and multi-family residential structures.

Economic activity in Arlington County has historically been closely associated with numerous governmental activities of the Washington Metropolitan region. In 2021, about 20.6 percent (or about 47,800) of the jobs in Arlington County are with the numerous federal, state or local government agencies. In recent years, however, the private employment base, particularly in the service sector, has increased substantially. The 2021 estimates show that sectors of the professional and technical services (25.1 percent and 58,200 jobs) and other services (22.2 percent and 51,300 jobs) have become the top industries for employment in Arlington County.



ORGANIZATION OF ARLINGTON COUNTY GOVERNMENT

The government of Arlington County has been organized according to the County Manager Plan of Government since 1932. Arlington County was the first jurisdiction in the United States to adopt a manager form of government by popular vote.

The five members of the County Board are elected at large for staggered, four-year terms. No more than two members are elected at one time. The Chairman of the County Board is elected annually by the members.

The County Board is responsible for several appointments. The County Board appoints a County Manager to serve as the chief executive and administrator of the County. The County Manager serves at the pleasure of the County Board, implements its policies, directs business and administrative procedures, and appoints department directors.

Assisting the County Manager are two Deputy County Managers, three Assistant County Managers and the Directors of 12 departments: Fire; Police; Public Safety Communications and Emergency Management; Environmental Services; Human Services; Economic Development; Community Planning, Housing and Development; Parks and Recreation; Management and Finance; Libraries; Human Resources; and Technology Services.

The County Board also appoints an Auditor to complement and augment the County’s existing internal auditing program. The auditor, and an advisory committee, report directly to the County Board and focus on tightening financial oversight and deepening program performance review.

Finally, the County Board appoints a County Attorney. The County Attorney provides legal services to the County Board, County agencies and personnel, elected County officials, independent County boards and commissions, and the Arlington School Board.

The operation of public schools in Arlington County is the responsibility of a five-member School Board. School Board members serve staggered, four-year terms in a sequence similar to that of County Board members.

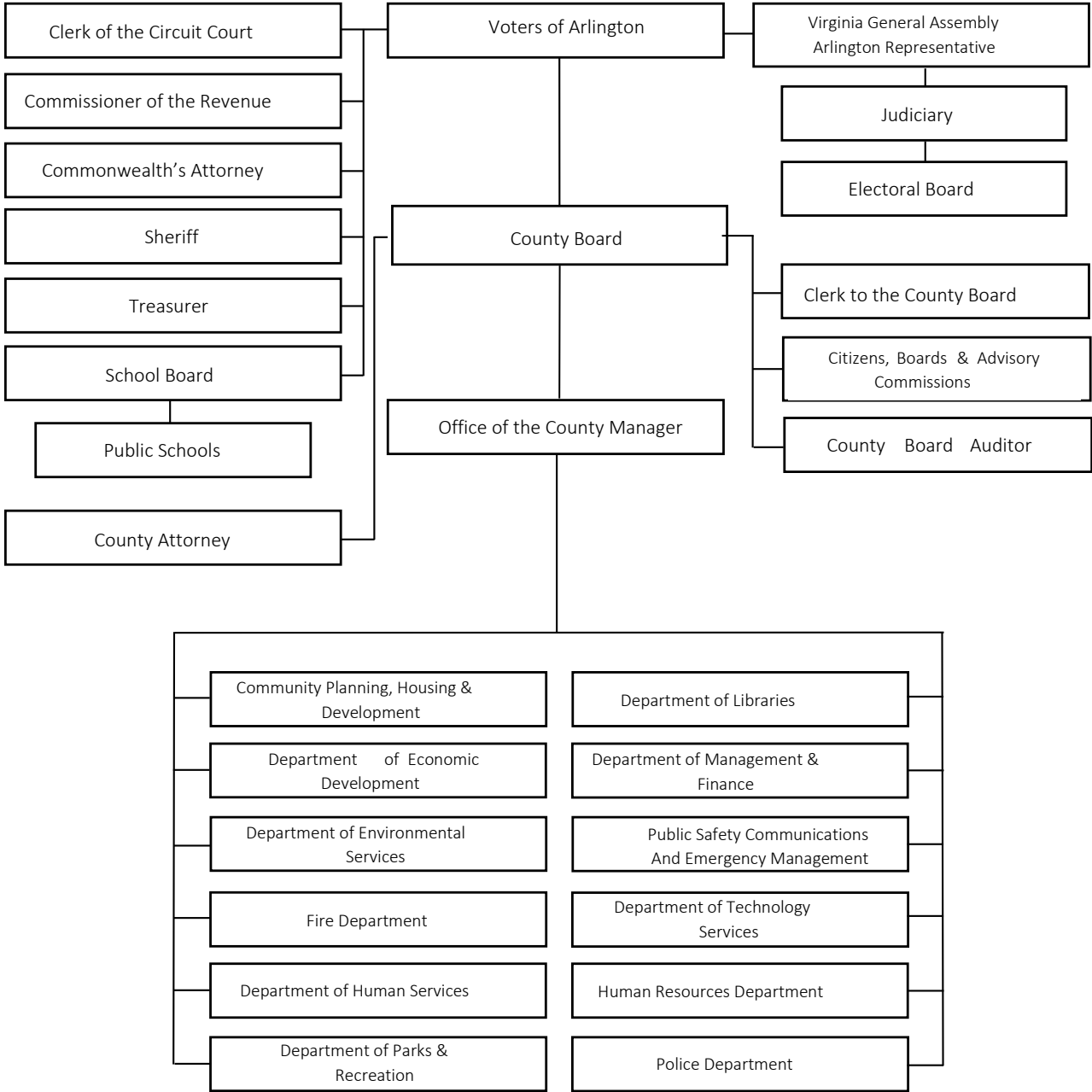
A 1992 revision of the State Code provided a local option to elect the School Board; Arlington voters chose to exercise that option via a November 1993 referendum. As of November 1994 and continuing each year thereafter, School Board members are elected.

The Superintendent of Schools is appointed by the School Board for a four-year term; the Superintendent administers the operations of the County’s public schools. The local share of the cost of operating public schools in the County is met with an appropriation and transfer by the County Board from the County’s General Fund. Operations of the School Board, however, are independent of the County Board and the County administration as prescribed by Virginia law.

In addition to the County Board, other elected County officials include the Commonwealth’s Attorney, Sheriff, Commissioner of the Revenue, Treasurer, and Clerk of the Circuit Court. The Judges of the Circuit Court, the General District Court, and the Juvenile and Domestic Relations District Court are appointed by the State legislature.

The structure of Arlington County’s Government is depicted in an organizational chart on the following page.

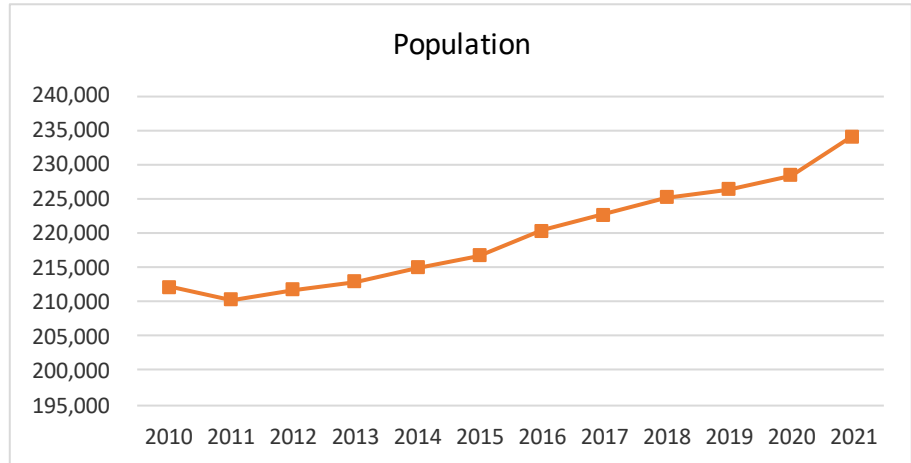
ORGANIZATION OF ARLINGTON COUNTY GOVERNMENT



DEMOGRAPHICS

The Department of Community Planning, Housing and Development (CPHD) estimates Arlington County’s 2021 population to be 234,200. Arlington continues to be among the most densely populated jurisdictions in the country. The County’s population has grown over the past eleven years, as shown in the chart on the following page, and is projected to continue at a similar rate. The 2011 dip in population is due to the use of 2010 Census Data. The population estimates for

2002-2009 used the 2000 Census as a base. The new 2010 Census data were used to recalibrate the CPHD’s method for estimating Arlington’s population for 2011 and beyond. Estimates for 2007-2009 and 2011-2021 are provided by CPHD and are based on new residential construction and estimates of average household size and vacancy rates. The 2010



number is based on the 2010 Census. CPHD estimates that 19.6 percent (45-900 persons) of the population are under the age 20. Individuals between the ages of 20-24 make up 6.8 percent or 16,000 persons. Those between the ages of 25-34 make up the largest share of the population at 23.6 percent or 55,230 persons. Persons between the ages of 35-44 represent 16.5 percent of the population (or 38,740 persons), those between the ages 45-64 make up 22.4 percent (or 52,350), those between the ages of 65-84 include 9.7 percent (or 22,810 persons), and those 85 and over represent 1.4 percent of the population (or 3,180 persons).

RACIAL/ETHNIC COMPOSITION

Arlington County takes pride in, and gains vitality from, the diversity of its population. According to the 2010 Census, 64.0 percent of Arlington residents are white, 15.1 percent are Hispanic, 8.2 percent are black or African-American, 9.6 percent are Asian or Other Pacific Islanders, and 3.0 percent identified as another race or two or more races. (Note: percentages may not add due to rounding.)

CPHD estimates that the aggregate population of Arlington increased by 9.6 percent between 2000 and 2010. (Note that staff believes the Census 2000 figure to be a bit lower than the actual population.) From 2000 to 2010, the largest increase in population among the racial/ethnic groups was an increase of about 18,472 among the white population. Among other groups, the Asian-Pacific Islander population also increased substantially, by 3,549 persons. The Hispanic population decreased by 3,886 persons, and the African-American population decreased by 156 persons between 2000 and 2010. The following table shows the change in population among various racial/ethnic groups from 2000 to 2010. The 2000 and 2010 figures are from the Decennial Censuses. Race and ethnicity data from the 2020 Census will be included in this section once available.

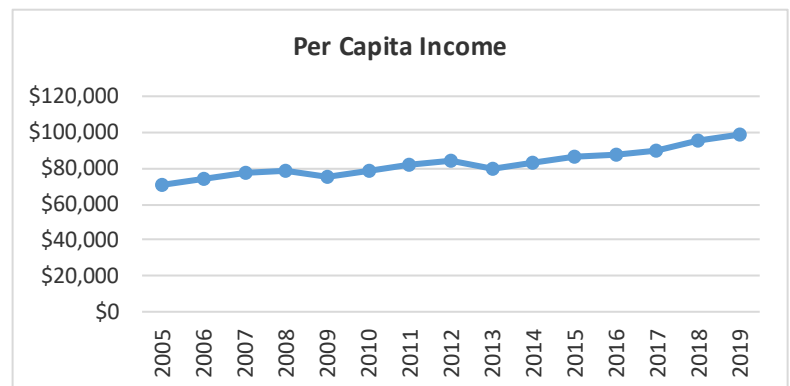
Racial/Ethnic Group	2000	2010	% Change
Non-Hispanic/Latino			
White alone	114,489	132,961	16.1%
Black or African American alone	17,244	17,088	-0.9%
Asian/Pacific Islander	16,346	19,895	21.7%
Other/MultiRacial	6,106	6,301	3.2%
Total Non-Hispanic/Latino	154,185	176,245	14.3%
Hispanic/Latino	35,268	31,382	-11.0%
TOTAL	189,453	207,627	9.6%

EDUCATION

Arlington’s population is among the most highly educated in the country. According to the U.S. Census Bureau 2019 American Community Survey, 94.5 percent of all household residents age 25 and older were high school graduates, 75.3 percent were college graduates, and 40.3 percent had graduate or professional degrees. Of the Arlington Public School (APS) class of 2020, 93 percent planned to pursue higher education, and the average expenditure per pupil was expected to be \$19,581 in the 2021 fiscal year.

PERSONAL INCOME

The educational achievements of Arlington’s population are reflected in the County’s income statistics as well. In 2019, the Bureau of Economic Analysis reported that Arlington’s per capita personal income was \$99,407. According to the U.S. Census American Community Survey, the median household income in Arlington County in 2019 was \$120,071. The Per Capita Income graph above shows the growth in per capita personal income since 2005. Income figures for 2005 through 2019 are from the U.S. Bureau of Economic Analysis.



HOUSING

According to CPHD estimates, there are 119,700 total housing units in Arlington as of January 2021. A housing unit is a multi-family dwelling or a single-family dwelling attached to other dwellings or a single-family detached dwelling. The majority (71.1 percent or 85,200) of housing units in Arlington are multi-family. There are an estimated 27,600 single-family detached (23.0 percent), 7,000 single-family attached housing units (5.8 percent) in Arlington. Since 2010, growth in housing units has been largely due to multi-family development. Between 2000 and January 2021, 13,200 new multi-family units have been completed (an increase of 18.3 percent), compared to a net of 485 single-family attached units. There has been a net gain of 131 single

family detached units during the same time span. According to CPHD estimates, owners occupy 38.7 percent and renters occupy 61.3 percent of occupied housing units.

HOUSEHOLD COMPOSITION

All persons living in a housing unit are termed a household. As of January 2021, CPHD estimates that there are 110,600 households in Arlington County. According to the 2010 Census, the average household size is 2.09 persons. The 2019 American Community Survey estimates 46 percent of Arlington households were family households and 54 percent were non-family households.

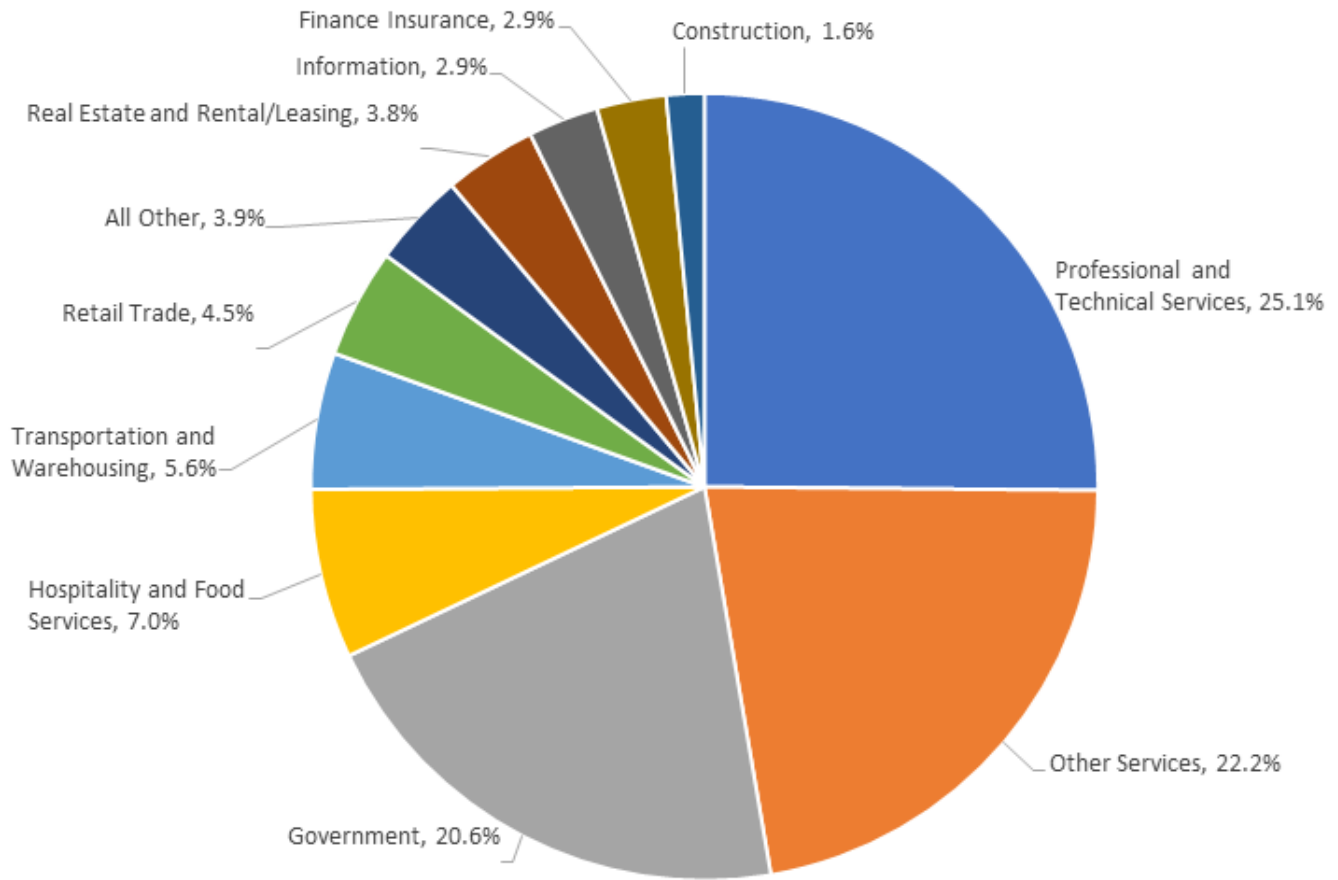
COMMUNITY FACILITIES IN ARLINGTON

▪ County Owned Parkland	924	▪ Rectangle Fields	42
	acres		
▪ NOVA Parks	136	▪ Libraries	8
	acres		
▪ Multi-Use Trails (Off-Street)	52	▪ Nature Centers	3
▪ County Owned Parks	148	▪ 55+ Centers	4
▪ Tennis and Basketball Courts	185	▪ Community Centers	12
▪ Diamond Fields	35	▪ Fire Stations	9

AT-PLACE EMPLOYMENT

According to Arlington County estimates, the total number of jobs in the County increased by about 15.0 percent between 2000 and 2021. The service sector comprises a significant share of jobs in Arlington. About 25.1 percent of all jobs are in the professional and technical services sector. Another 22.2 percent of jobs are in other service sectors, including administrative, education, and health. The government sector also continues to comprise a large share of Arlington jobs. About 20.6 percent (47,800 jobs) of the County’s January 2021 employment is estimated to be in government. 2017 was the first year in which a sector (professional and technical services) other than government held the highest percentage of at-place jobs in Arlington County.

2021 At Place Employment



At-Place Employment

Professional and Technical Services	58,200
Other Services	51,300
Government	47,800
Hospitality and Food Services	16,100
Transportation and Warehousing	13,000
Retail Trade	10,400
All Other	9,000
Real Estate and Rental/Leasing	8,800
Information	6,700
Finance Insurance	6,600
Construction	3,600
TOTAL	231,500

- Source: Sector employment are Arlington County CPHD estimates based on data from the U.S. Bureau of Economic Analysis for the year 2018 (most current available). Unemployment data is from the U.S. Bureau of Labor Statistics Local Area Unemployment Statistics (LAUS).
- Note: Jobs by sector may not add due to rounding.

TOP 10 PRINCIPAL PRIVATE EMPLOYERS

COMPANY	NATURE OF BUSINESS
Accenture	Business Services
Amazon	Electronic Shopping
Bloomberg BNA	Legal, Tax and Business News
Booz Allen Hamilton	Business Services
Deloitte	Business Services
Gartner	Business Services
Grant Thornton	Business Services
Lockheed Martin	Aerospace
Nestle	Durable Goods
Virginia Hospital Center	Medical Services

Source: Arlington Economic Development

SELECTED SERVICE INDICATORS

	FY 2020 Actual	FY 2021 Estimate	FY 2022 Estimate
General Obligation Bond Rating	Aaa/AAA/AAA	Aaa/AAA/AAA	Aaa/AAA/AAA
New Voters Registered by Electoral Board (Calendar Year)	16,689	12,000	10,000
Inspections Conducted for Fire Code Enforcement, fire protection system, and hazardous materials inspections	2,350	3,400	3,400
Percentage of Fire Emergencies Reached Within Four Minutes of Dispatch	60%	60%	60%
Fire/EMS/Public Service Responses	52,527	63,000	63,000
Refuse Collected on County and Contracted Routes (Tons)	28,359	30,828	25,442
Total Curbside Recycling Tonnage Collected	10,343	10,861	10,343
Licensed Child Care Facilities (Family Day Care Homes)	133	133	133
Number of registrations in Parks and Recreation programs	50,010	30,000	60,000
Number of individuals registered with the Office for Senior Adult Programs (OSAP)	5,616	3,500	7,000
Police response time for Priority 1 calls (minutes from dispatch to arrival)	4:56	5:00	5:00