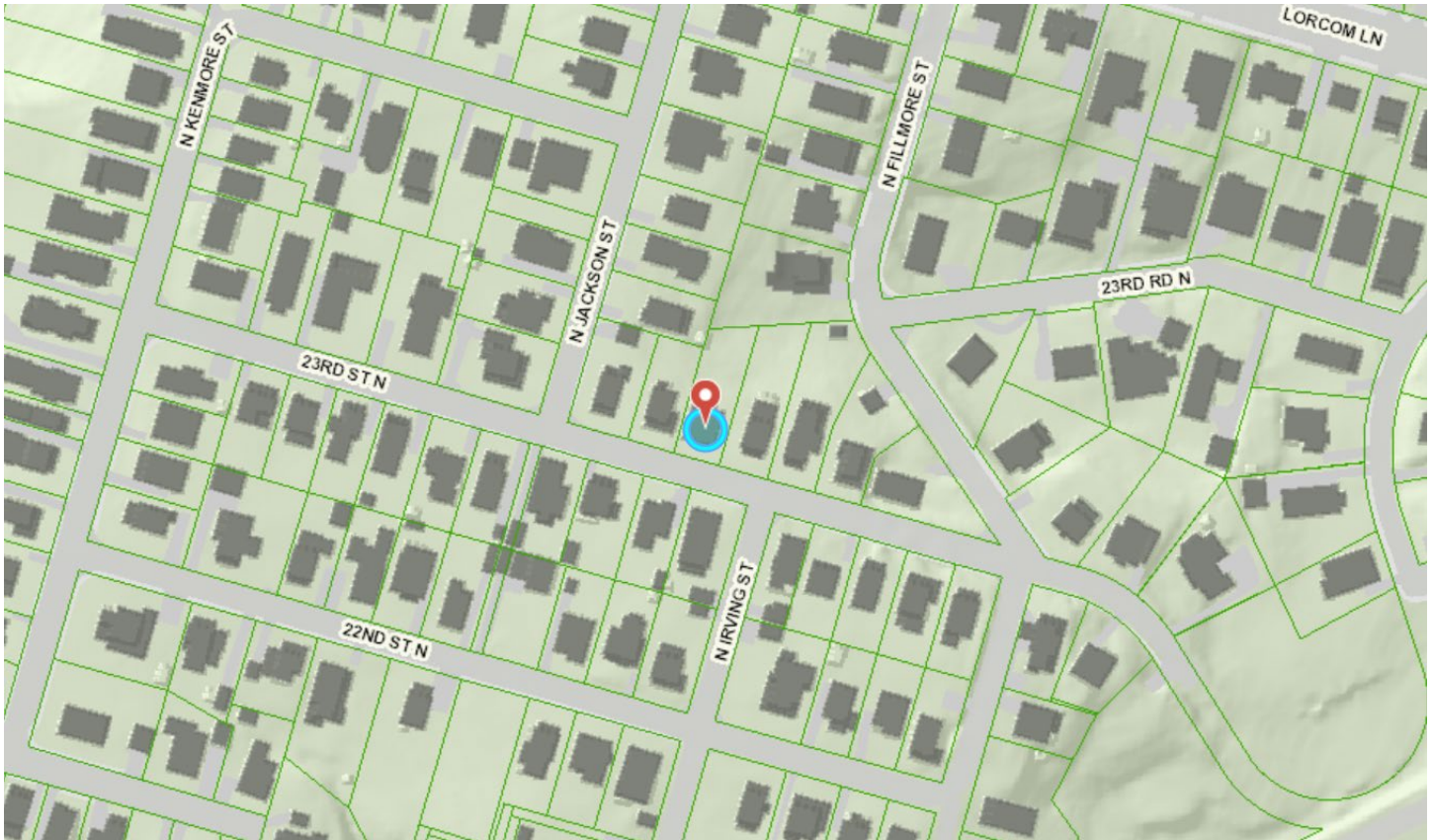


# Historical Affairs and Landmark Review Board

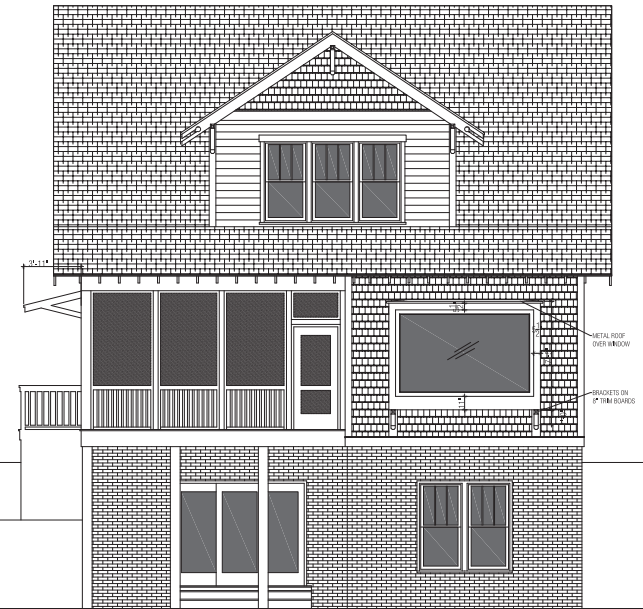
Arlington County, Virginia



## HALRB meeting August 16, 2023, Case 21-02B

**3205 23<sup>rd</sup> Street N.:** Retroactive request to install side entrance staircase approved in CoA 21-02 instead of the staircase approved in CoA 21-02A..





2 BACK ELEVATION  
1/4"=1'-0"

ELEVATION NOTES

A. GENERAL CONTRACTOR SHALL VERIFY EXISTING GRADES AND COORDINATE ANY ADJUSTMENTS NECESSARY TO HOUSE WITH OWNER.

B. PLUMBING AND HVAC VENTS SHALL BE GROUPED IN ATTIC TO LIMIT ROOF PENETRATIONS TO BE LOCATED AWAY FROM PUBLIC VIEW, I.E. AT THE REAR OF THE HOUSE AND SHALL BE PRIMED AND PAINTED TO MATCH ROOF COLORS.

C. PROVIDE ATIC VENTILATION PER LOCAL CODE REQUIREMENTS.

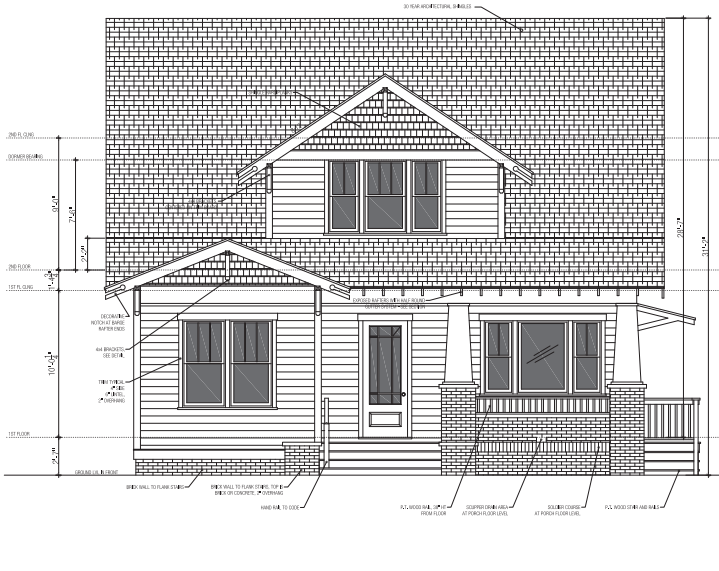
D. CONTRACTOR TO VERIFY FINAL DIMENSIONS FOR EXTERIOR TRIMMER TRIM NUMBERS AND BRACK PATTERNS WITH THE ARCHITECT PRIOR TO CONSTRUCTION.

E. NOTE THE GRADE LINE SHOWN ON PLANS, ELEVATIONS & DETAILS ARE FOR ILLUSTRATIVE PURPOSES ONLY & NOT AS AN ACCURATE REPRESENTATION OF THE ACTUAL SLOPE ON THE SUBJECT PROPERTY. THE FINAL GRADE WILL BE VERIFIED ON SITE & THE FOUNDATION WILL BE BUILT TO ACCOMMODATE THOSE CONDITIONS.



3 LEFT ELEVATION  
1/4"=1'-0"

# APRIL 2021 APPROVED ELEVATIONS



1 FRONT ELEVATION  
1/4"=1'-0"



4 RIGHT ELEVATION  
1/4"=1'-0"

**HOME PATTERNS** crafted simplicity  
30 Elm Place, Hastings on Hudson, NY 10706  
(864) 278 0068 INFO@HOMEPATTERNS.COM

Revisions/Additions by Others:  
Date of Issue: April 5, 2021

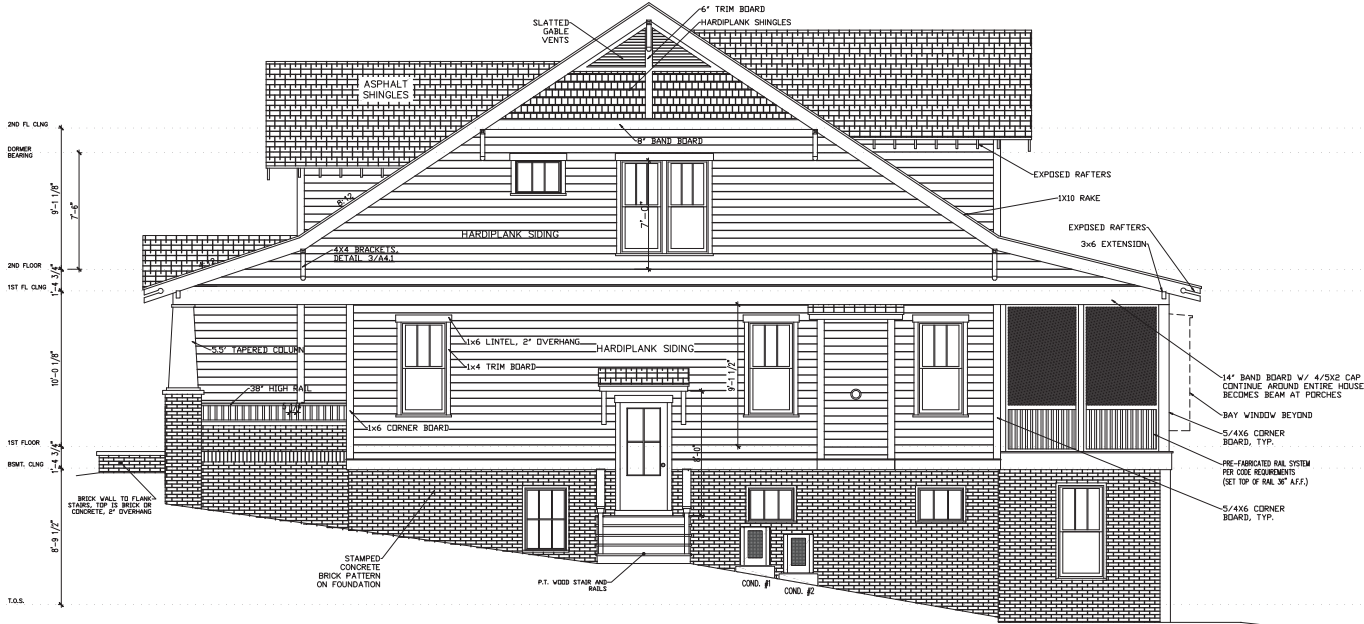
DO NOT COPY  
This drawing is the property of Home Patterns LLC. It is to be used only for the project and location specified. It is not to be reproduced, stored in a retrieval system, or transmitted in any form or by any means, electronic, mechanical, photocopying, recording, or by any information storage and retrieval system, without the prior written permission of Home Patterns LLC. Contact Home Patterns LLC (864) 278 0068 for more information.

HOME PATTERNS LLC  
Although Home Patterns LLC makes every effort to ensure the accuracy of the information provided in this drawing, it does not warrant, represent, or guarantee that the information is complete, accurate, or that it will be suitable for the intended use. Home Patterns LLC is not responsible for any errors or omissions in this drawing, or for any consequences arising therefrom. Home Patterns LLC is not a contractor and does not provide construction services. Home Patterns LLC is not a design-build firm and does not provide design-build services. Home Patterns LLC is not a general contractor and does not provide general contracting services. Home Patterns LLC is not a real estate agent and does not provide real estate services. Home Patterns LLC is not a financial advisor and does not provide financial services. Home Patterns LLC is not a lawyer and does not provide legal services. Home Patterns LLC is not a doctor and does not provide medical services. Home Patterns LLC is not a veterinarian and does not provide veterinary services. Home Patterns LLC is not a pharmacist and does not provide pharmaceutical services. Home Patterns LLC is not a nurse and does not provide nursing services. Home Patterns LLC is not a therapist and does not provide therapeutic services. Home Patterns LLC is not a counselor and does not provide counseling services. Home Patterns LLC is not a social worker and does not provide social work services. Home Patterns LLC is not a teacher and does not provide educational services. Home Patterns LLC is not a coach and does not provide coaching services. Home Patterns LLC is not a mentor and does not provide mentoring services. Home Patterns LLC is not a sponsor and does not provide sponsorship services. Home Patterns LLC is not a partner and does not provide partnership services. Home Patterns LLC is not an agent and does not provide agency services. Home Patterns LLC is not a broker and does not provide brokerage services. Home Patterns LLC is not a dealer and does not provide dealership services. Home Patterns LLC is not a distributor and does not provide distribution services. Home Patterns LLC is not a retailer and does not provide retail services. Home Patterns LLC is not a wholesaler and does not provide wholesaling services. Home Patterns LLC is not a manufacturer and does not provide manufacturing services. Home Patterns LLC is not a producer and does not provide production services. Home Patterns LLC is not a creator and does not provide creation services. Home Patterns LLC is not an author and does not provide authorship services. Home Patterns LLC is not an inventor and does not provide invention services. Home Patterns LLC is not a discoverer and does not provide discovery services. Home Patterns LLC is not an explorer and does not provide exploration services. Home Patterns LLC is not a researcher and does not provide research services. Home Patterns LLC is not a scientist and does not provide scientific services. Home Patterns LLC is not a scholar and does not provide scholarly services. Home Patterns LLC is not a student and does not provide student services. Home Patterns LLC is not a graduate and does not provide graduation services. Home Patterns LLC is not a professional and does not provide professional services. Home Patterns LLC is not a specialist and does not provide specialist services. Home Patterns LLC is not a generalist and does not provide generalist services. Home Patterns LLC is not a consultant and does not provide consulting services. Home Patterns LLC is not an advisor and does not provide advisory services. Home Patterns LLC is not a consultant and does not provide consulting services. Home Patterns LLC is not an advisor and does not provide advisory services. Home Patterns LLC is not a consultant and does not provide consulting services. Home Patterns LLC is not an advisor and does not provide advisory services.

License Use #21-038  
DO NOT COPY  
Licensed Locating  
3206 23rd St.  
N Arlington, VA 22201

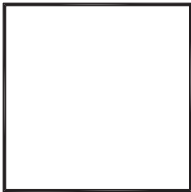
sheet no.  
**A2**

# MARCH 2022 APPROVED ELEVATIONS



**RIGHT SIDE ELEVATION**  
SCALE: 1/4" = 1'-0"

**HALRB APPROVED**  
COA ISSUED ON: March 16, 2022  
FIELD CHANGES TO EXTERIOR COMPONENTS OF APPROVED PLANS ARE NOT PERMITTED. FOR INFORMATION CALL 703-228-3830.



**MOMENT**  
DC • VIRGINIA • MD  
78229 BOONE BOULEVARD, SUITE 410  
VIRGINIA, VA 22132  
Phone: 703.988.2200 • Email: info@momentgc.com

22x34 Plotted at 1/4"=1'-0" - 11x17 Plotted at 1/8" = 1'-0"  
**ALAIR HOMES - 3205 23RD ST N**  
**RIGHT SIDE ELEVATION**



DRAWN BY:	
MMD	
DATE:	02/14/22
REV No.	DATE
XXX	XX-XX-XX

**22-100**

SHEET No.  
**A4.2**





