

ARCHITECTS
PLANNERS

1411 CHAIN BRIDGE ROAD • #200 McLEAN, VIRGINIA 22101 • 103.893.0102 • FAX 103.893.0104
WWW.DEVEREAUXARCH.COM

© DEVEREAUX & ASSOCIATES EXPRESSLY RESERVES ITS COMMON LAW COPYRIGHT AND OTHER PROPERTY RIGHTS IN THESE PLANS. THESE PLANS ARE NOT TO BE REPRODUCED, CHANGED, OR COPIED IN ANY FORM OR MANNER WHATSOEVER NOR ARE THEY TO BE ASSIGNED TO ANY THIRD PARTY WITHOUT FIRST OBTAINING THE EXPRESS WRITTEN PERMISSION AND CONSENT OF DEVEREAUX & ASSOCIATES, P.C.

TRANSIT STOP

SCHEMATIC DESIGN
FBC SUBMITTAL

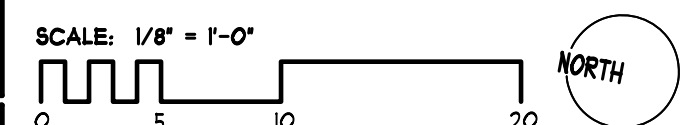
SUBJECT TO CHANGE DURING WORKING DRAWINGS

2801 COLUMBIA PIKE
THE CHRISTOPHER COMPANIES
ARLINGTON, VIRGINIA



DATE:	SHEET NO:
01.15.2022 FBC SUBMITTAL 01	
03.31.2023 FBC SUBMITTAL 02	
01.05.2023 DRC REVIEW	

A.1.90



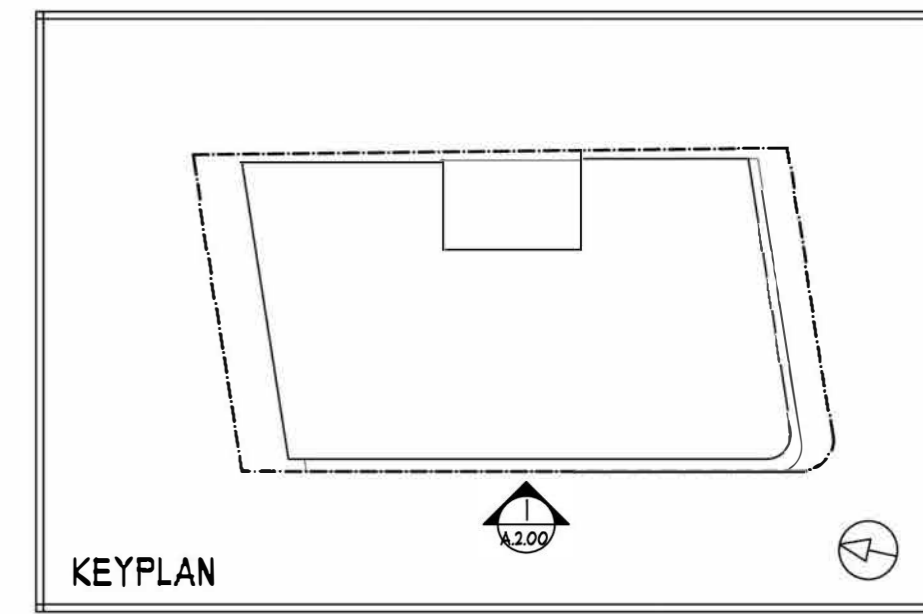
MATERIAL LIST

- | | | |
|---|-----------------------------|--------------------------|
| 1 PRECAST TYPE 1 (SEE NOTE 1 BELOW) | 8 FIBER CEMENT PANEL TYPE 2 | 14 ALUMINIUM RAIL |
| 2 PRECAST BANDING TYPE 1 (SEE NOTE 1 BELOW) | 9 ** NOT USED ** | 15 SYNTHETIC TRIM |
| 3 PRECAST TYPE 2 | 10 ** NOT USED ** | 16 STOREFRONT GLAZING |
| 4 ** NOT USED ** | 11 ALUMINIUM CORNICE TYPE 1 | 17 VINYL WINDOW |
| 5 FIBER CEMENT SIDING TYPE 1 | 12 ALUMINIUM CORNICE TYPE 2 | 18 VINYL PATIO DOOR |
| 6 FIBER CEMENT SIDING TYPE 2 | 13 ALUMINIUM CORNICE TYPE 3 | 19 GLASS PANEL GUARDRAIL |
| 7 FIBER CEMENT PANEL TYPE 1 | | |

NOTES:
 1. EXISTING PRECAST PANELS TO BE REMOVED, STORED, AND REPLACED TO THE EXTENT FEASIBLE. NEW PANELS, IF REQUIRED, TO MATCH EXISTING.
 2. FINAL MATERIAL SELECTIONS TO BE MADE BY OWNER.



1 WEST ELEVATION - S. WALTER REED DR.
 A.2.00 1/8" = 1'-0"



**DEV
ERE
AUX**

ARCHITECTS
 &
 PLANNERS

1111 CHAIN BRIDGE ROAD • #200 McLEAN, VIRGINIA 22101 • 103.893.0102 • FAX 103.893.0104
 WWW.DEVEREAUXARCH.COM

© DEVEREAUX & ASSOCIATES EXPRESSLY RESERVES ITS COMMON LAW COPYRIGHT AND OTHER PROPERTY RIGHTS IN THESE PLANS. THESE PLANS ARE NOT TO BE REPRODUCED, CHANGED, OR COPIED IN ANY FORM OR MANNER WHATSOEVER, NOR ARE THEY TO BE ASSIGNED TO ANY THIRD PARTY WITHOUT FIRST OBTAINING THE EXPRESS WRITTEN PERMISSION AND CONSENT OF DEVEREAUX & ASSOCIATES, P.C.

ELEVATIONS
 SCHEMATIC DESIGN
 FBC SUBMITTAL
 SUBJECT TO CHANGE DURING WORKING DRAWINGS

2801 COLUMBIA PIKE
 THE CHRISTOPHER COMPANIES
 ARLINGTON, VIRGINIA



DATE:
 01.15.2022 FBC SUBMITTAL 01
 03.31.2023 FBC SUBMITTAL 02
 01.05.2023 DRC REVIEW

SHEET NO:
A.2.00

SCALE: 1/8" = 1'-0"

0 5 10 20

NORTH

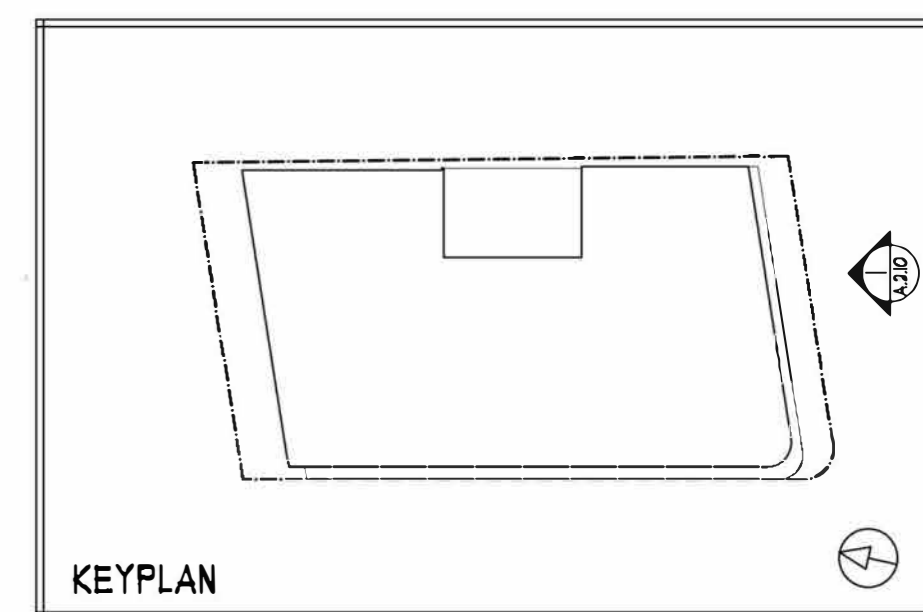
MATERIAL LIST

- | | | |
|---|-----------------------------|--------------------------|
| 1 PRECAST TYPE I (SEE NOTE 1 BELOW) | 8 FIBER CEMENT PANEL TYPE 2 | 14 ALUMINIUM RAIL |
| 2 PRECAST BANDING TYPE I (SEE NOTE 1 BELOW) | 9 ** NOT USED ** | 15 SYNTHETIC TRIM |
| 3 PRECAST TYPE 2 | 10 ** NOT USED ** | 16 STOREFRONT GLAZING |
| 4 ** NOT USED ** | 11 ALUMINUM CORNICE TYPE 1 | 17 VINYL WINDOW |
| 5 FIBER CEMENT SIDING TYPE 1 | 12 ALUMINUM CORNICE TYPE 2 | 18 VINYL PATIO DOOR |
| 6 FIBER CEMENT SIDING TYPE 2 | 13 ALUMINUM CORNICE TYPE 3 | 19 GLASS PANEL GUARDRAIL |
| 7 FIBER CEMENT PANEL TYPE 1 | | |

NOTES:
 1. EXISTING PRECAST PANELS TO BE REMOVED, STORED, AND REPLACED TO THE EXTENT FEASIBLE. NEW PANELS, IF REQUIRED, TO MATCH EXISTING.
 2. FINAL MATERIAL SELECTIONS TO BE MADE BY OWNER.



1 SOUTH ELEVATION - COLUMBIA PIKE
 A.2.10 1/8" = 1'-0"



DEV
ERE
AUX

ARCHITECTS
 &
 PLANNERS

1411 CHAIN BRIDGE ROAD • #200 McLEAN, VIRGINIA 22101 • 703.893.0102 • FAX 703.893.0104
 WWW.DEVEREAUXARCH.COM

© DEVEREAUX & ASSOCIATES EXPRESSLY RESERVES ITS COMMON LAW COPYRIGHT AND OTHER PROPERTY RIGHTS IN THESE PLANS. THESE PLANS ARE NOT TO BE REPRODUCED, CHANGED, OR COPIED IN ANY FORM OR MANNER WHATSOEVER NOR ARE THEY TO BE ASSIGNED TO ANY THIRD PARTY WITHOUT FIRST OBTAINING THE EXPRESS WRITTEN PERMISSION AND CONSENT OF DEVEREAUX & ASSOCIATES, P.C.

ELEVATIONS
 SCHEMATIC DESIGN
 FBC SUBMITTAL
 SUBJECT TO CHANGE DURING WORKING DRAWINGS

2801 COLUMBIA PIKE
 THE CHRISTOPHER COMPANIES
 ARLINGTON, VIRGINIA



DATE:
 01.15.2022 FBC SUBMITTAL 01
 03.31.2023 FBC SUBMITTAL 02
 07.05.2023 DRC REVIEW

SHEET NO:
A.2.10

SCALE: 1/8" = 1'-0"

NORTH

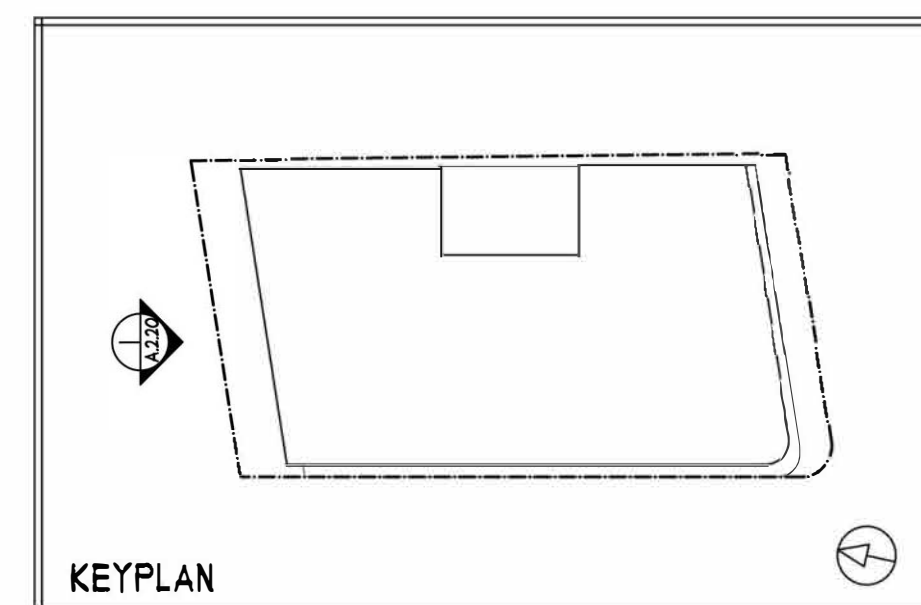
MATERIAL LIST

- | | | |
|---|-----------------------------|--------------------------|
| 1 PRECAST TYPE 1 (SEE NOTE 1 BELOW) | 8 FIBER CEMENT PANEL TYPE 2 | 14 ALUMINIUM RAIL |
| 2 PRECAST BANDING TYPE 1 (SEE NOTE 1 BELOW) | 9 ** NOT USED ** | 15 SYNTHETIC TRIM |
| 3 PRECAST TYPE 2 | 10 ** NOT USED ** | 16 STOREFRONT GLAZING |
| 4 ** NOT USED ** | 11 ALUMINIUM CORNICE TYPE 1 | 17 VINYL WINDOW |
| 5 FIBER CEMENT SIDING TYPE 1 | 12 ALUMINIUM CORNICE TYPE 2 | 18 VINYL PATIO DOOR |
| 6 FIBER CEMENT SIDING TYPE 2 | 13 ALUMINIUM CORNICE TYPE 3 | 19 GLASS PANEL GUARDRAIL |
| 7 FIBER CEMENT PANEL TYPE 1 | | |

NOTES:
 1. EXISTING PRECAST PANELS TO BE REMOVED, STORED, AND REPLACED TO THE EXTENT FEASIBLE. NEW PANELS, IF REQUIRED, TO MATCH EXISTING.
 2. FINAL MATERIAL SELECTIONS TO BE MADE BY OWNER.



1 NORTH ELEVATION
 A.2.20 1/8" = 1'-0"



ARCHITECTS
 &
 PLANNERS
 1411 CHAIN BRIDGE ROAD • #200 McLEAN, VIRGINIA 22101 • 103.893.0102 • FAX 103.893.0106
 WWW.DEVEREAUXARCH.COM
 © DEVEREAUX & ASSOCIATES EXPRESSLY RESERVES ITS COMMON LAW COPYRIGHT AND OTHER PROPERTY RIGHTS IN THESE PLANS. THESE PLANS ARE NOT TO BE REPRODUCED, CHANGED, OR COPIED IN ANY FORM OR MANNER WHATSOEVER, NOR ARE THEY TO BE ASSIGNED TO ANY THIRD PARTY WITHOUT FIRST OBTAINING THE EXPRESS WRITTEN PERMISSION AND CONSENT OF DEVEREAUX & ASSOCIATES, P.C.

ELEVATIONS
 SCHEMATIC DESIGN
 FBC SUBMITTAL
 SUBJECT TO CHANGE DURING WORKING DRAWINGS

2801 COLUMBIA PIKE
 THE CHRISTOPHER COMPANIES
 ARLINGTON, VIRGINIA



DATE:
 01.15.2022 FBC SUBMITTAL 01
 03.31.2023 FBC SUBMITTAL 02
 01.05.2023 DRC REVIEW

SHEET NO:
A.2.20
 SCALE: 1/8" = 1'-0"
 0 5 10 20

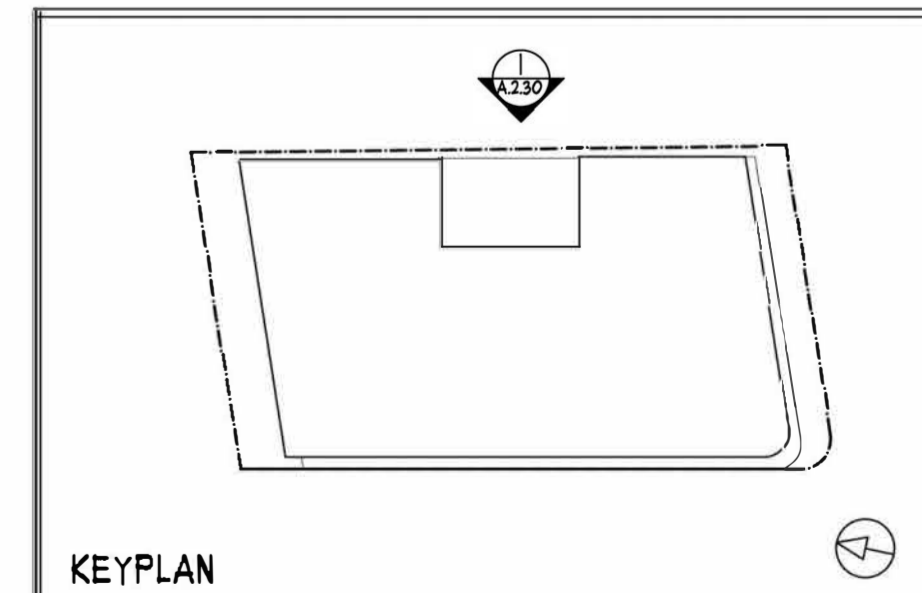
MATERIAL LIST

- | | | |
|---|-----------------------------|--------------------------|
| 1 PRECAST TYPE 1 (SEE NOTE 1 BELOW) | 8 FIBER CEMENT PANEL TYPE 2 | 14 ALUMINIUM RAIL |
| 2 PRECAST BANDING TYPE 1 (SEE NOTE 1 BELOW) | 9 ** NOT USED ** | 15 SYNTHETIC TRIM |
| 3 PRECAST TYPE 2 | 10 ** NOT USED ** | 16 STOREFRONT GLAZING |
| 4 ** NOT USED ** | 11 ALUMINIUM CORNICE TYPE 1 | 17 VINYL WINDOW |
| 5 FIBER CEMENT SIDING TYPE 1 | 12 ALUMINIUM CORNICE TYPE 2 | 18 VINYL PATIO DOOR |
| 6 FIBER CEMENT SIDING TYPE 2 | 13 ALUMINIUM CORNICE TYPE 3 | 19 GLASS PANEL GUARDRAIL |
| 7 FIBER CEMENT PANEL TYPE 1 | | |

NOTES:
 1. EXISTING PRECAST PANELS TO BE REMOVED, STORED, AND REPLACED TO THE EXTENT FEASIBLE. NEW PANELS, IF REQUIRED, TO MATCH EXISTING.
 2. FINAL MATERIAL SELECTIONS TO BE MADE BY OWNER.



1 EAST ELEVATION
 A.2.30 1/8" = 1'-0"



ARCHITECTS
 &
 PLANNERS
 1471 CHAN BRIDGE ROAD • #200 McLEAN, VIRGINIA 22101 • 703.893.0102 • FAX 703.893.0104
 WWW.DEVEREAUXARCH.COM
 © DEVEREAUX 1 ASSOCIATES EXPRESSLY RESERVES ITS COMMON LAW COPYRIGHT AND OTHER PROPERTY RIGHTS IN THESE PLANS. THESE PLANS ARE NOT TO BE REPRODUCED, CHANGED, OR COPIED IN ANY FORM OR MANNER WHATSOEVER, NOR ARE THEY TO BE ASSIGNED TO ANY THIRD PARTY WITHOUT FIRST OBTAINING THE EXPRESS WRITTEN PERMISSION AND CONSENT OF DEVEREAUX 1 ASSOCIATES, P.C.

ELEVATIONS
 SCHEMATIC DESIGN
 FBC SUBMITTAL
 SUBJECT TO CHANGE DURING WORKING DRAWINGS

2801 COLUMBIA PIKE
 THE CHRISTOPHER COMPANIES
 ARLINGTON, VIRGINIA



DATE:
 01.15.2022 FBC SUBMITTAL 01
 03.31.2023 FBC SUBMITTAL 02
 01.05.2023 DRC REVIEW

SHEET NO:
A.2.30

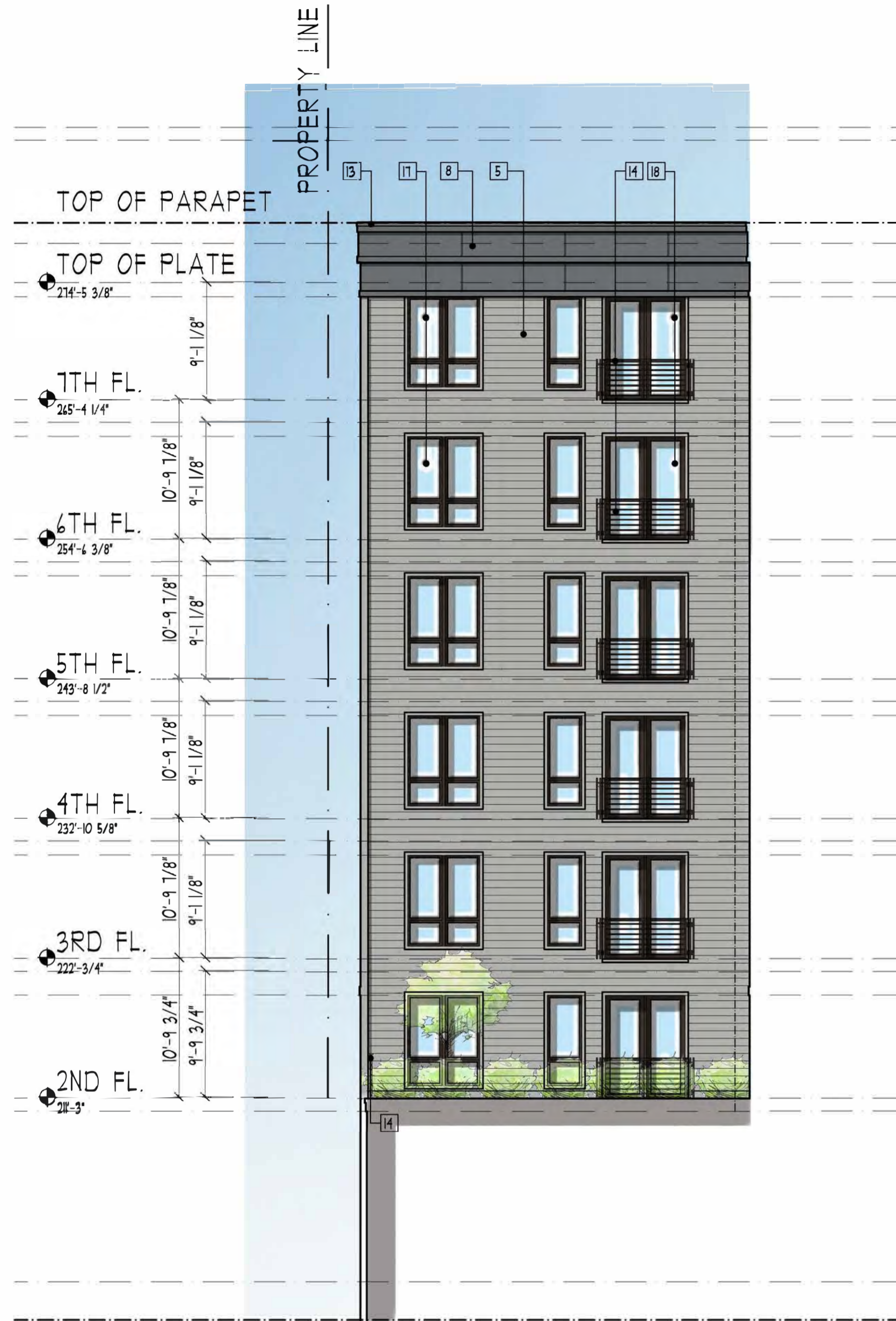
SCALE: 1/8" = 1'-0"

NORTH

MATERIAL LIST

- | | | |
|---|-----------------------------|--------------------------|
| 1 PRECAST TYPE 1 (SEE NOTE 1 BELOW) | 8 FIBER CEMENT PANEL TYPE 2 | 14 ALUMINIUM RAIL |
| 2 PRECAST BANDING TYPE 1 (SEE NOTE 1 BELOW) | 9 ** NOT USED ** | 15 SYNTHETIC TRIM |
| 3 PRECAST TYPE 2 | 10 ** NOT USED ** | 16 STOREFRONT GLAZING |
| 4 ** NOT USED ** | 11 ALUMINUM CORNICE TYPE 1 | 17 VINYL WINDOW |
| 5 FIBER CEMENT SIDING TYPE 1 | 12 ALUMINUM CORNICE TYPE 2 | 18 VINYL PATIO DOOR |
| 6 FIBER CEMENT SIDING TYPE 2 | 13 ALUMINUM CORNICE TYPE 3 | 19 GLASS PANEL GUARDRAIL |
| 7 FIBER CEMENT PANEL TYPE 1 | | |

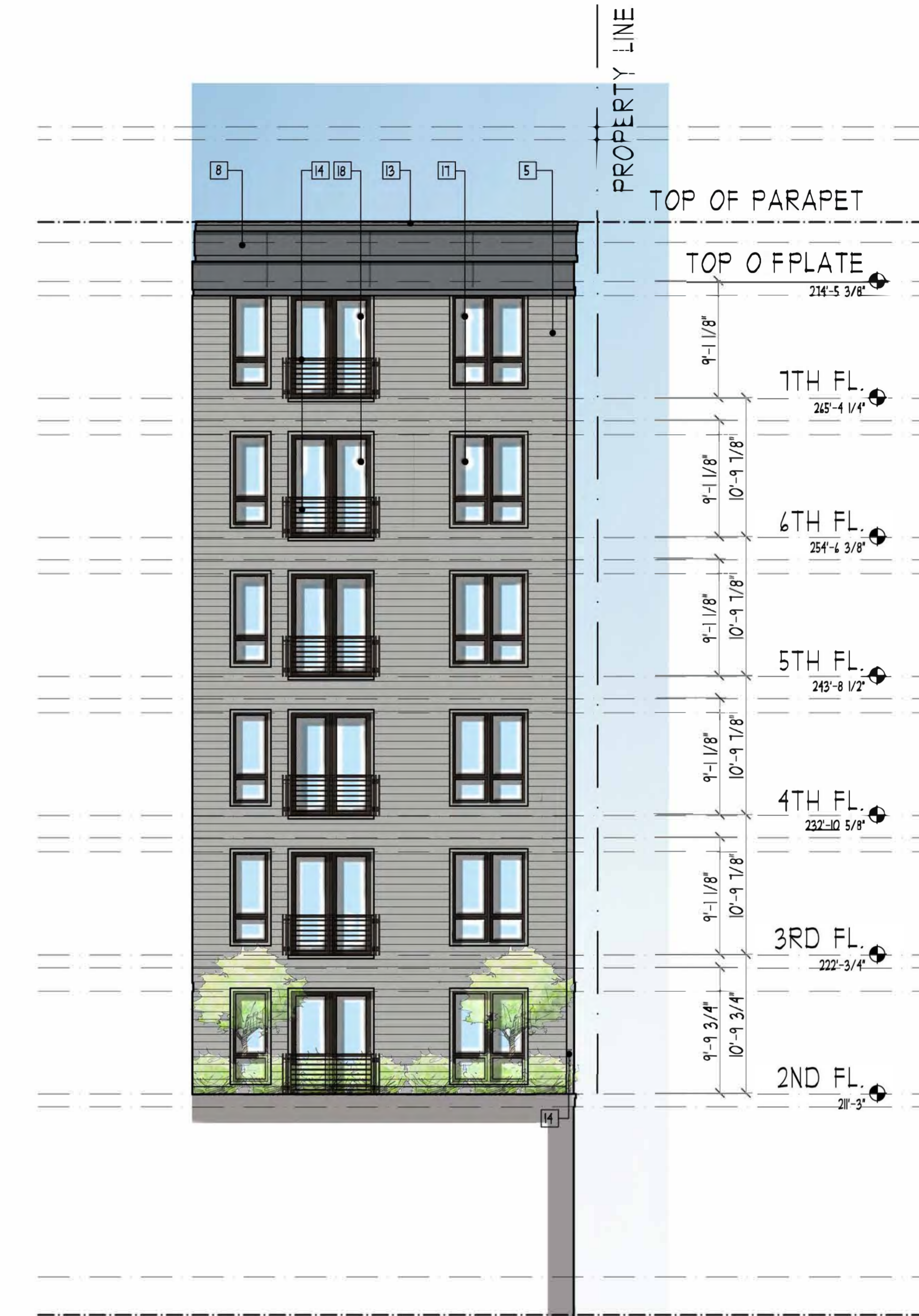
NOTES:
 1. EXISTING PRECAST PANELS TO BE REMOVED, STORED, AND REPLACED TO THE EXTENT FEASIBLE. NEW PANELS, IF REQUIRED, TO MATCH EXISTING.
 2. FINAL MATERIAL SELECTIONS TO BE MADE BY OWNER.



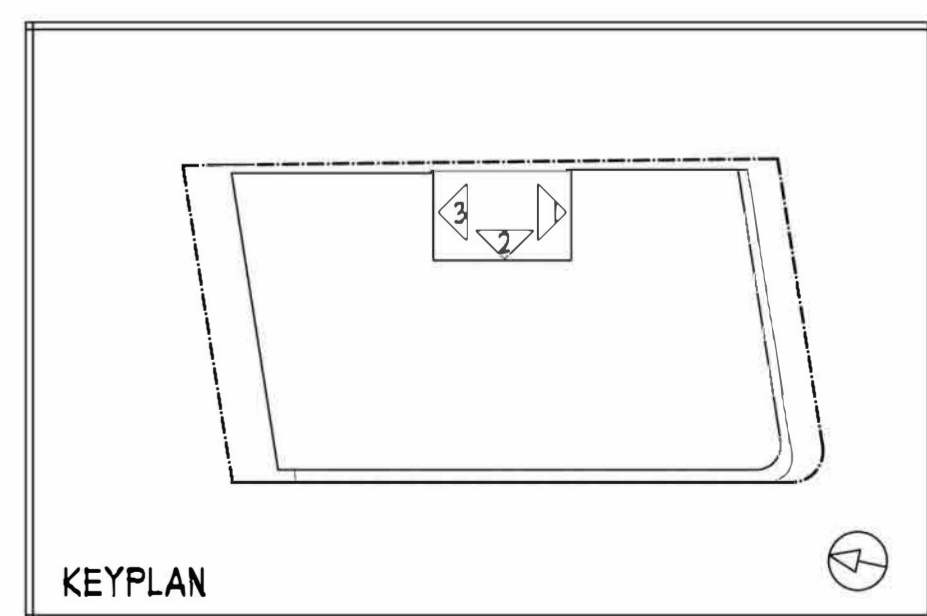
1 COURTYARD ELEVATION
 A.2.40 1/8" = 1'-0"



2 COURTYARD ELEVATION
 A.2.40 1/8" = 1'-0"



3 COURTYARD ELEVATION
 A.2.40 1/8" = 1'-0"



DEVEREUX ARCHITECTS & PLANNERS
 1111 CHAIN BRIDGE ROAD • #200 McLEAN, VIRGINIA 22101 • 703.893.0102 • FAX 703.893.0104
 WWW.DEVEREAUXARCH.COM

© DEVEREAUX & ASSOCIATES EXPRESSLY RESERVES ITS COMMON LAW COPYRIGHT AND OTHER PROPERTY RIGHTS IN THESE PLANS. THESE PLANS ARE NOT TO BE REPRODUCED, CHANGED, OR COPIED IN ANY FORM OR MANNER WHATSOEVER, NOR ARE THEY TO BE ASSIGNED TO ANY THIRD PARTY WITHOUT FIRST OBTAINING THE EXPRESS WRITTEN PERMISSION AND CONSENT OF DEVEREAUX & ASSOCIATES, P.C.

ELEVATIONS
 SCHEMATIC DESIGN
 FBC SUBMITTAL
 SUBJECT TO CHANGE DURING WORKING DRAWINGS

2801 COLUMBIA PIKE
 THE CHRISTOPHER COMPANIES
 ARLINGTON, VIRGINIA

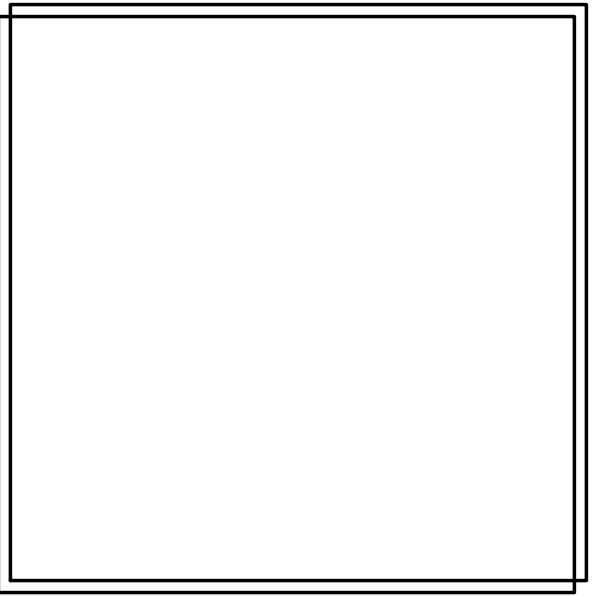


DATE:
 01.15.2022 FBC SUBMITTAL 01
 03.31.2023 FBC SUBMITTAL 02
 01.05.2023 DRC REVIEW

SHEET NO:
A.2.40

SCALE: 1/8" = 1'-0"

0 5 10 20 NORTH



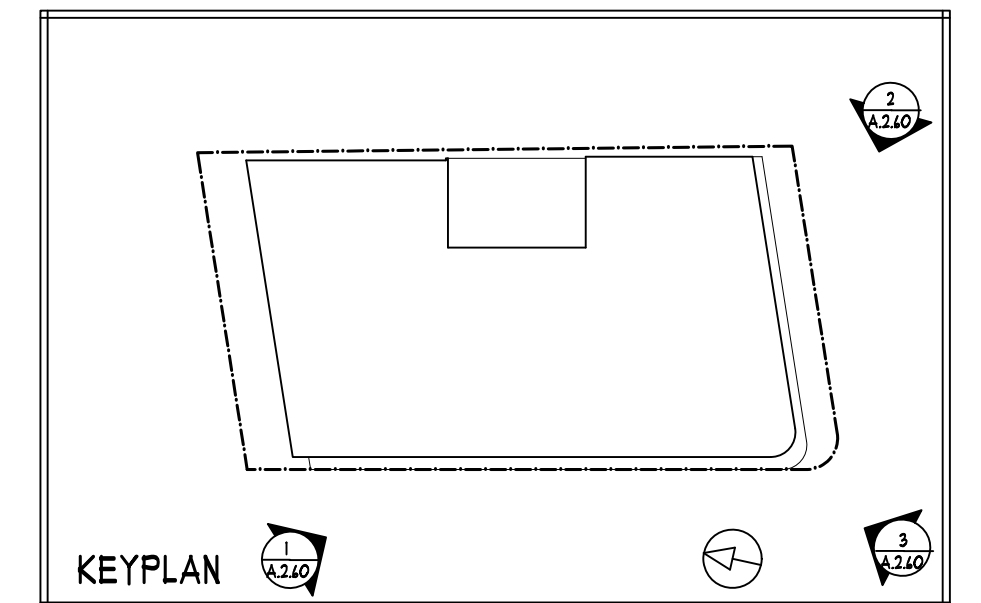
2 VIEW LOOKING NORTHWEST
A.2.60 1/8" = 1'-0"



3 VIEW LOOKING NORTHEAST
A.2.60 1/8" = 1'-0"



1 VIEW LOOKING SOUTHEAST
A.2.60 1/8" = 1'-0"



ARCHITECTS
&
PLANNERS

1111 CHAIN BRIDGE ROAD • #200 McLEAN, VIRGINIA 22101 • 703.893.0102 • FAX 703.893.0104
WWW.DEVEREAUXARCH.COM

© DEVEREAUX & ASSOCIATES EXPRESSLY RESERVES ITS COMMON LAW COPYRIGHT AND OTHER PROPERTY RIGHTS IN THESE PLANS. THESE PLANS ARE NOT TO BE REPRODUCED, CHANGED, OR COPIED IN ANY FORM OR MANNER WHATSOEVER, NOR ARE THEY TO BE ASSIGNED TO ANY THIRD PARTY WITHOUT FIRST OBTAINING THE EXPRESS WRITTEN PERMISSION AND CONSENT OF DEVEREAUX & ASSOCIATES, P.C.

MASSING STUDIES

SCHEMATIC DESIGN
FBC SUBMITTAL

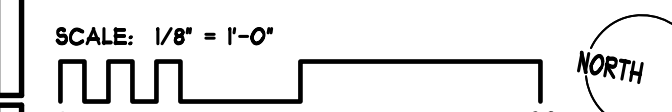
SUBJECT TO CHANGE DURING WORKING DRAWINGS

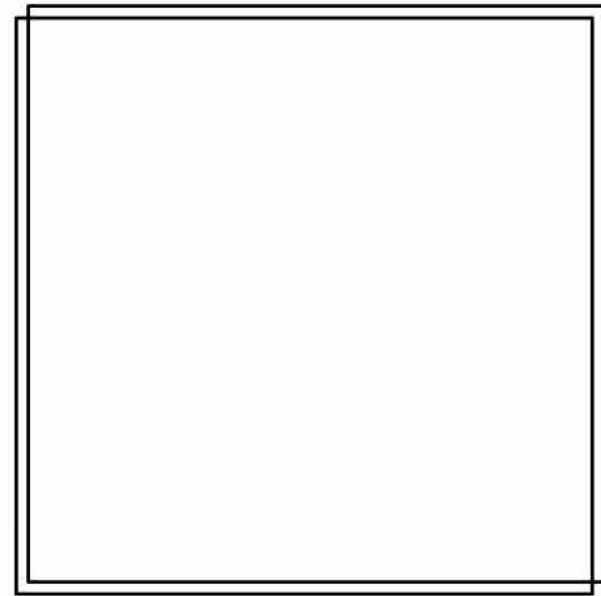
2801 COLUMBIA PIKE
THE CHRISTOPHER COMPANIES
ARLINGTON, VIRGINIA



DATE:	SHEET NO:
09.15.2022 FBC SUBMITTAL 01	
03.31.2023 FBC SUBMITTAL 02	
01.05.2023 DRC REVIEW	

A.2.60

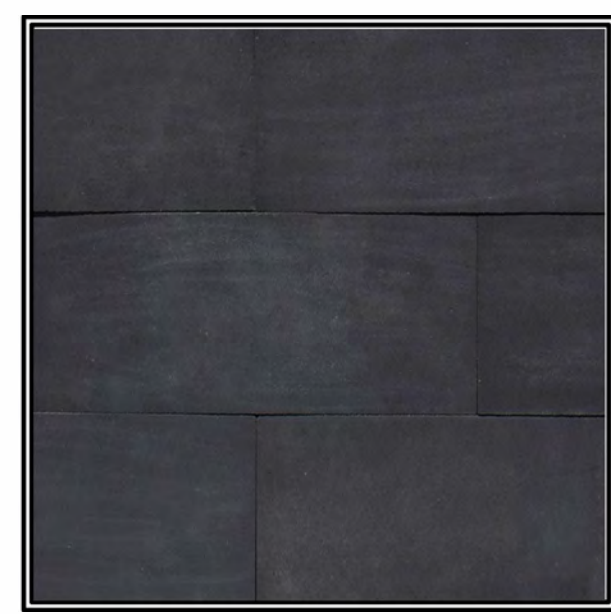




- 1 PRECAST TYPE 1
- 2 PRECAST BANDING TYPE 1

CUSTOM CAST STONE

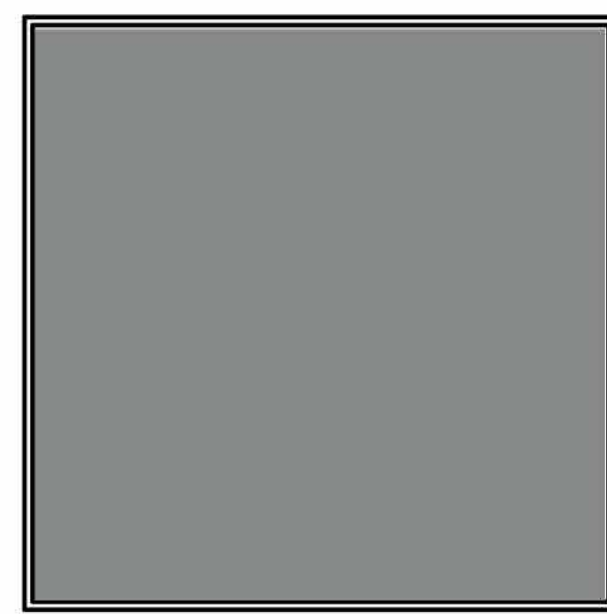
SANDSTONE
EXISTING PRECAST PANELS TO BE REMOVED, STORED, AND REPLACED TO THE EXTENT FEASIBLE. NEW PANELS, IF REQUIRED, TO MATCH EXISTING.



- 3 PRECAST TYPE 2

CUSTOM CAST STONE

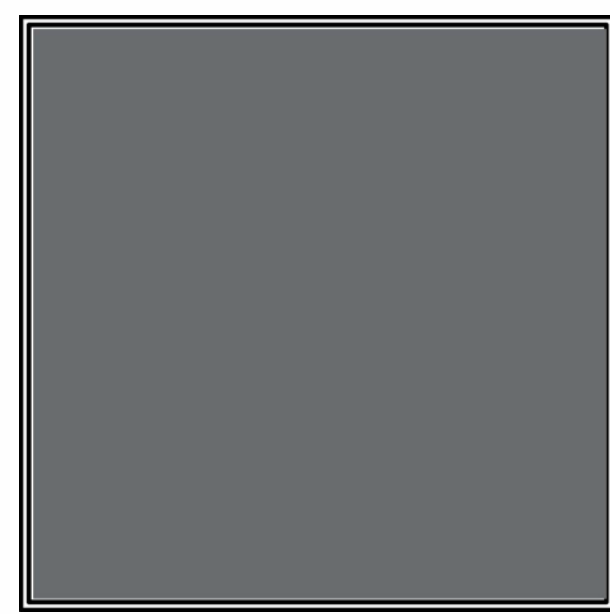
SUPER BLACK



- 4 FIBER CEMENT SIDING TYPE 1
- 5 SYNTHETIC TRIM

JAMES HARDIE

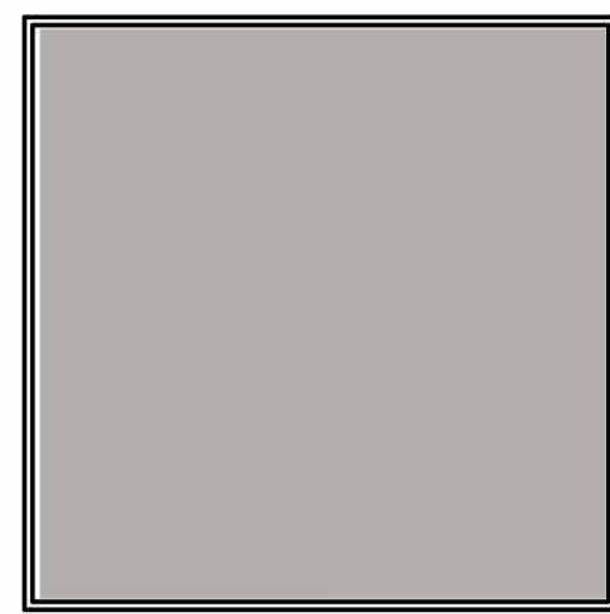
GRAY SLATE
SMOOTH



- 4 FIBER CEMENT SIDING TYPE 2
- 8 FIBER CEMENT PANEL TYPE 2
- 5 SYNTHETIC TRIM

JAMES HARDIE

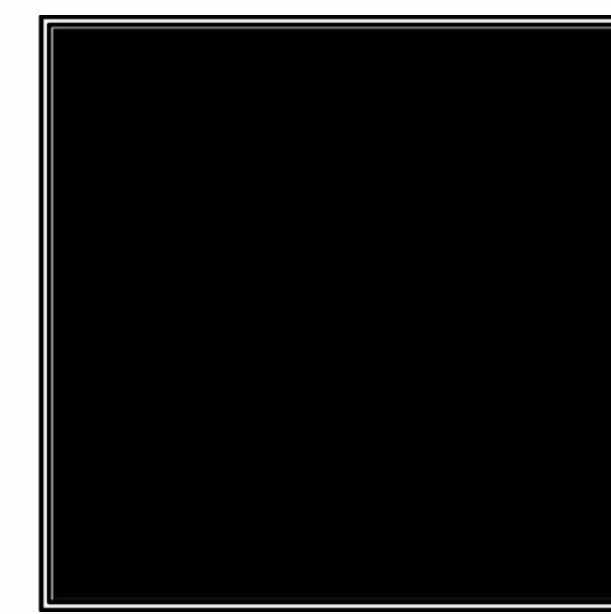
NIGHT GRAY
SMOOTH



- 1 FIBER CEMENT PANEL TYPE 1
- 5 SYNTHETIC TRIM

JAMES HARDIE

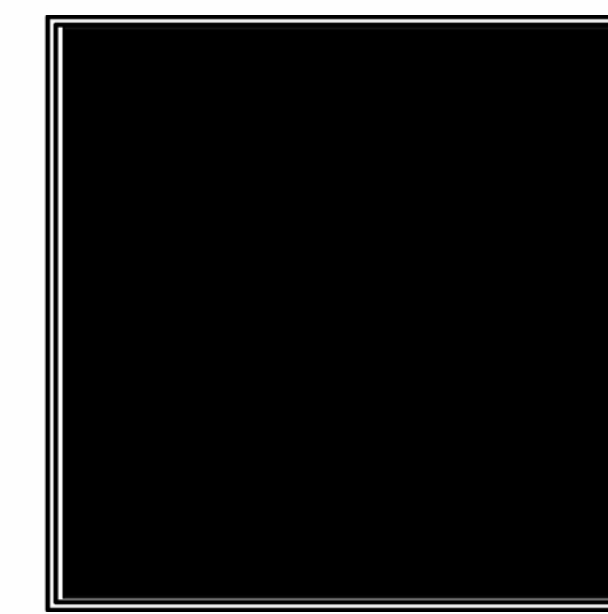
PEARL GRAY
SMOOTH



- 1 ALUMINUM CORNICE TYPE 1
- 2 ALUMINUM CORNICE TYPE 2
- 3 ALUMINUM CORNICE TYPE 3

PAC-CLAD

MATTE BLACK



- 4 ALUMINUM RAIL
- 11 VINYL WINDOW
- 12 STOREFRONT GLAZING
- 13 VINYL PATIO DOOR

KAWNEER • JELD WEN

BLACK

FINAL MATERIAL SELECTIONS TO BE MADE BY OWNER



ARCHITECTS
 &
 PLANNERS

1411 CHAIN BRIDGE ROAD • #200 McLEAN, VIRGINIA 22101 • 703.893.0102 • FAX 703.893.0104
 WWW.DEVEREAUXARCH.COM

© DEVEREAUX & ASSOCIATES EXPRESSLY RESERVES ITS COMMON LAW COPYRIGHT AND OTHER PROPERTY RIGHTS IN THESE PLANS. THESE PLANS ARE NOT TO BE REPRODUCED, CHANGED, OR COPIED IN ANY FORM OR MANNER WHATSOEVER, NOR ARE THEY TO BE ASSIGNED TO ANY THIRD PARTY WITHOUT FIRST OBTAINING THE EXPRESS WRITTEN PERMISSION AND CONSENT OF DEVEREAUX & ASSOCIATES, P.C.

COLOR & MATERIALS

SCHEMATIC DESIGN
 FBC SUBMITTAL

SUBJECT TO CHANGE DURING WORKING DRAWINGS

2801 COLUMBIA PIKE
 THE CHRISTOPHER COMPANIES
 ARLINGTON, VIRGINIA



DATE:	SHEET NO:
03.15.2022 FBC SUBMITTAL 01	
03.31.2023 FBC SUBMITTAL 02	
01.05.2023 DRC REVIEW	

A.2.70

SCALE: 1/8" = 1'-0"

