

GUIDELINES FOR REPLACEMENT WINDOWS IN THE COLONIAL VILLAGE HISTORIC DISTRICT

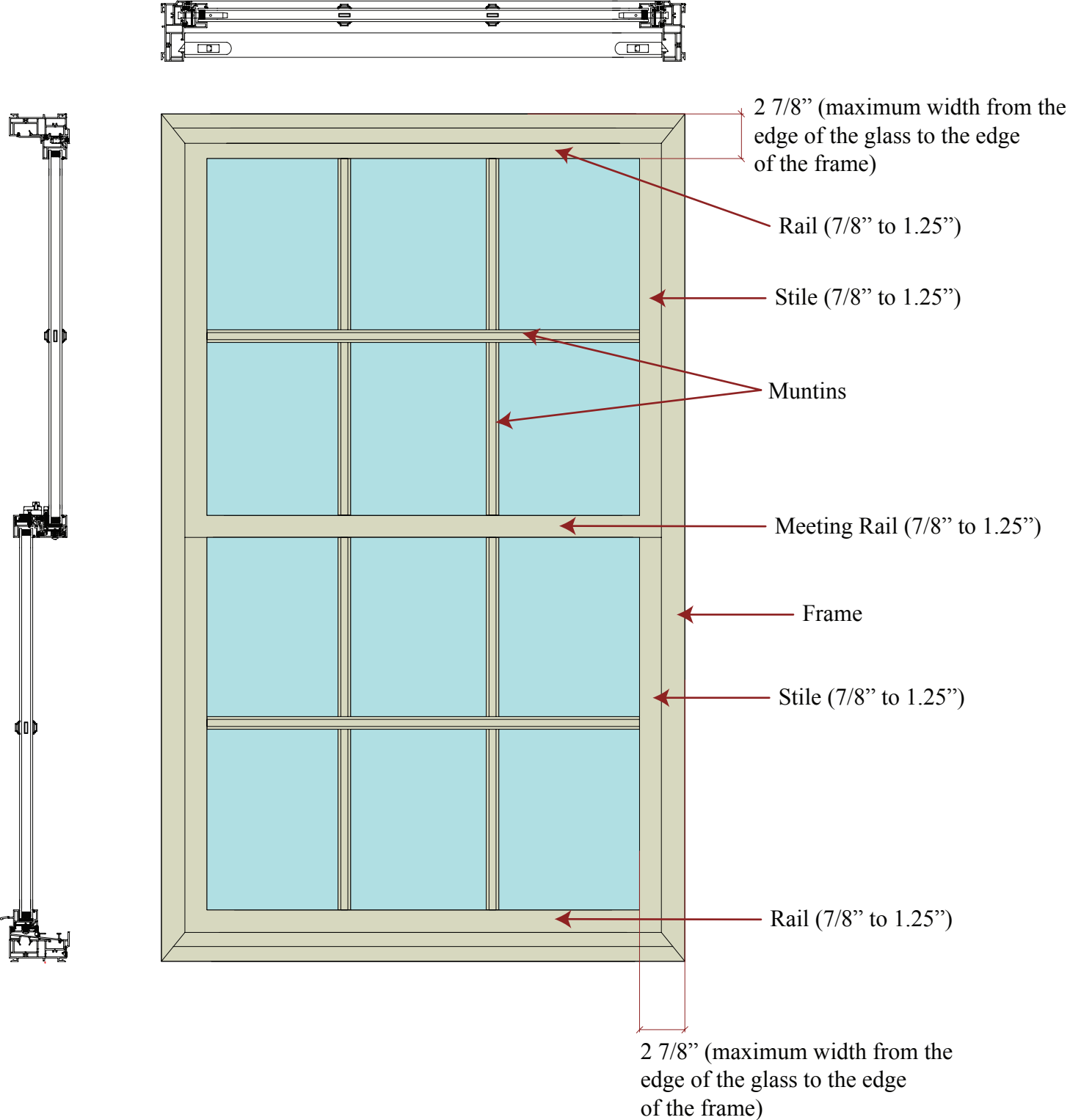
Process for Replacement

Replacement windows in the Colonial Village Historic District must first be approved by the Board of Directors of the CV II or CV III Board of Directors. A Certificate of Appropriateness (CoA) application letter and a letter of approval from the CVII or CVIII Boards is then taken to the County's HPP staff. The replacement window request will be treated under the Administrative Certificate of Appropriateness (ACoA) process. The ACoA process is an expedited review process for routine CoA requests. The County Historic Preservation Coordinator and Planners are authorized to review, approve, and issue ACoAs.

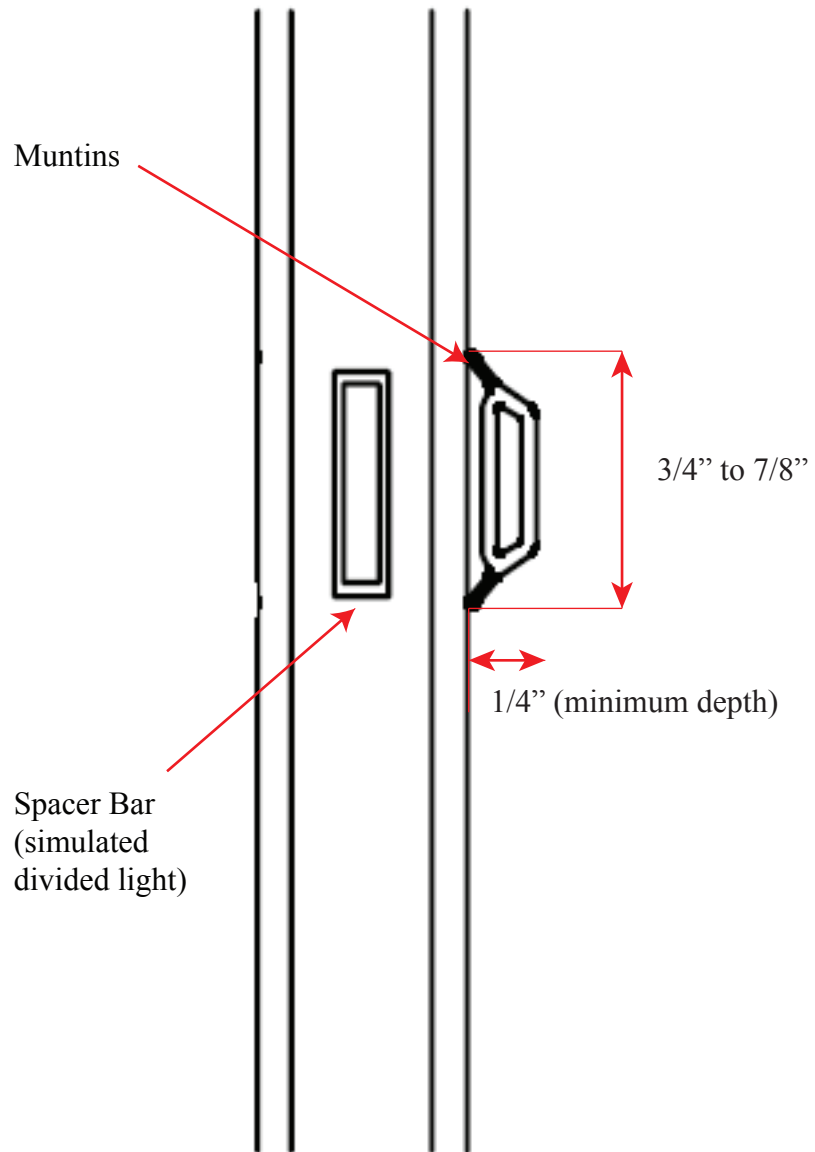
Criteria for Replacement Windows

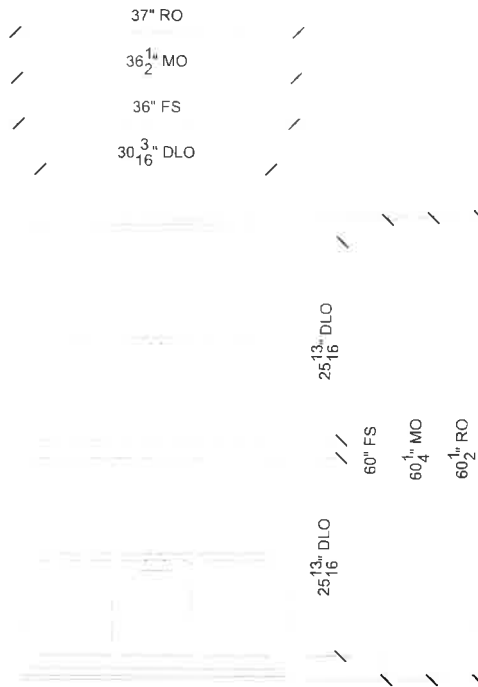
- The replacement window should be made of virgin polyvinyl chloride (PVC).
- *The HALRB also encourages home owners to install wood windows. These windows, however, must meet the same specifications as the vinyl windows in order to ensure a uniform exterior appearance. Any wood window proposal will require a Certificate of Appropriateness reviewed by the HALRB.
- The exterior color of the replacement window must be white.
- Replacement technique must be "complete frame" not "replacement frame" or "sash pack."
- The dimensions of the replacement window must match the dimensions of the existing window.
 - The window opening will not be expanded or infilled.
 - The rails and stiles must be between 7/8" to 1.25" (this is the visible width from the exterior).
 - The width from the edge of the glass to the edge of the frame will not exceed 2 7/8".
- Replacement windows must have the same number of lights (glass panes) as the existing window.
- The replacement window must have either true or simulated divided lights and the division of lights must be identical to that of the existing window.
 - The replacement window must have narrow muntin bars (external grids) no less than 3/4" and no more than 7/8" wide and a minimum of 1/4" depth.
- Bathroom window may be lined with white or beige colored opaque film only.
- Capping must be done with a pre-finished protruded aluminum with a squared profile that matches the dimensions and design of the existing capping (brick mould and mullion).

Window Specifications



Window Specifications





01

SCALE: 1/2" = 1'-0"

- $\frac{1}{2}$ Head
- $\frac{2}{2}$ Jamb
- $\frac{3}{2}$ Sill
- $\frac{4}{2}$ Divided Lite
- $\frac{1}{3}$ Check Rail

SPECIFICATIONS

Line #: 1
 Qty: 1
 Mark Unit: None
 Product Line: Elevate
 Unit Description: Double Hung
 Rough Opening: 37" X 60 1/2"
 Frame Size: 36" X 60"
 Masonry Opening: 36 1/2" X 60 1/4"
 Sash Opening: 37" X 60 1/2"
 Inside Opening: 37" X 60 1/2"
 Exterior Finish: Stone White
 Species: None
 Interior Finish: White
 Unit Type: Double Hung
 Call Number: None
 Jamb Depth: 4 9/16"
 Exterior Casing: Casing Type : None
 Subsill: None



PROJ/JOB: WINDOWS PLUS / COLONIAL VILLAGE HISTORIC DISTRICT
 DIST/DEALER: WINDOWS PLUS, LLC
 DRAWN: BILL KOERNIG
 QUOTE#: VACS13U PK VER: 0004.00.00

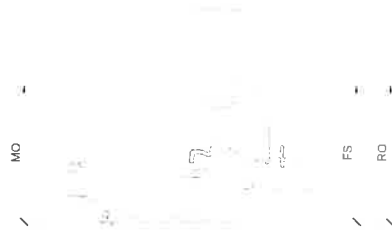
CREATED: 02/06/2023 REVISION:

SHEET
 1
 OF 3



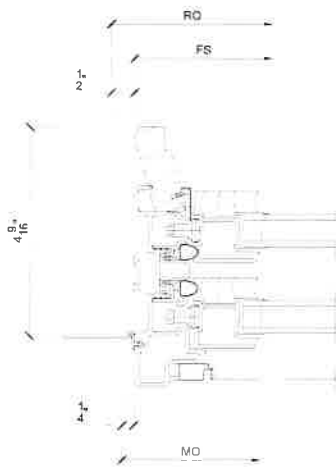
1 Head

2 SCALE: 3" = 1'-0"



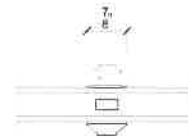
3 Sill

2 SCALE: 3" = 1'-0"



2 Jamb

2 SCALE: 3" = 1'-0"



4 Divided Lite

2 SCALE: 3" = 1'-0"



PROJ/JOB: WINDOWS PLUS / COLONIAL VILLAGE HISTORIC DISTRICT
 DIST/DEALER: WINDOWS PLUS, LLC
 DRAWN: BILL KOERNIG
 QUOTE#: VACS13U PK VER: 0004.00.00 CREATED: 02/06/2023 REVISION:

SHEET
 2
 OF 3



1
3 **Check Rail**
SCALE: 3" = 1'-0"

3
3 **NOT USED**
SCALE: 3" = 1'-0"

2
3 **NOT USED**
SCALE: 3" = 1'-0"

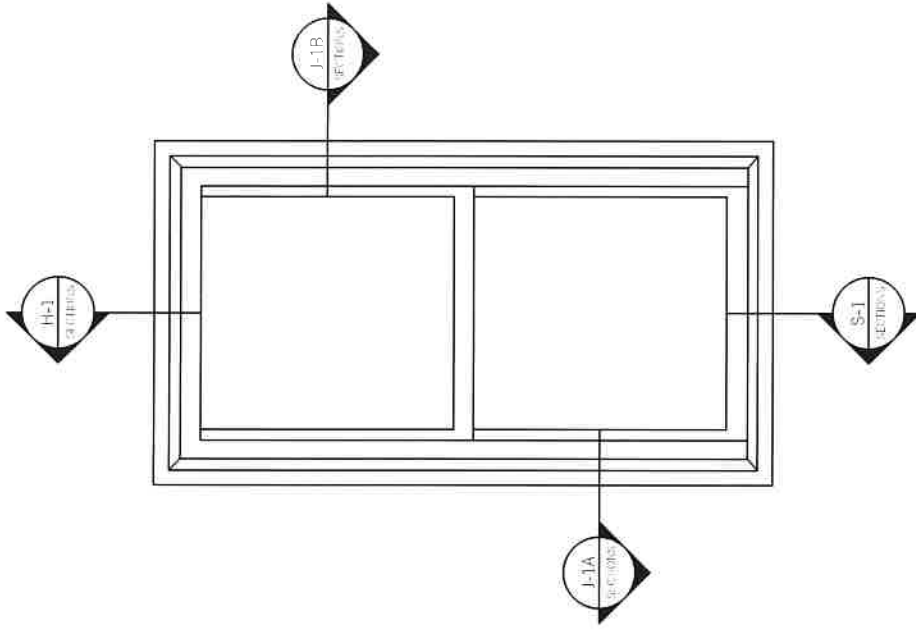
4
3 **NOT USED**
SCALE: 3" = 1'-0"



PROJ/JOB: WINDOWS PLUS / COLONIAL VILLAGE HISTORIC DISTRICT
DIST/DEALER: WINDOWS PLUS, LLC
DRAWN: BILL KOERNIG
QUOTE#: VACS13U PK VER: 0004.00.00

CREATED: 02/06/2023 REVISION:

SHEET
3
OF 3



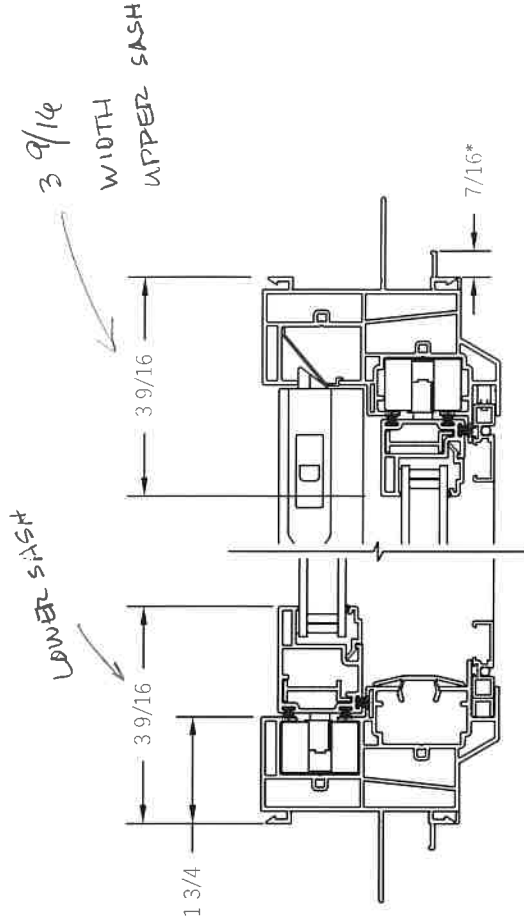
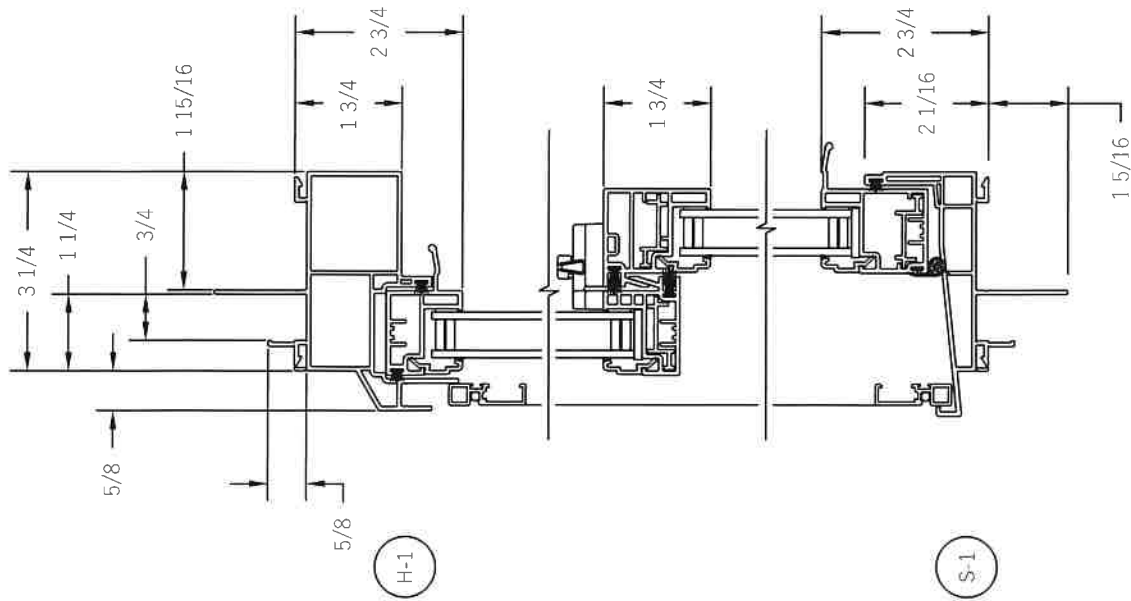
NOTICE: This document contains information that is proprietary to and is protected by copyright of Paradigm Window Solutions For Life. This information may not be copied, disclosed to others or used for any purpose other than that for which it is given without written permission from Paradigm. Copyright ©2021 Paradigm Window Solutions For Life. All Rights Reserved.

DRAWN:	CW	DATE:	5/14/21
CHECKED:	DE	DATE:	5/14/21
PART NUMBER:	-		

DIMENSION NOTE:
All dimensions are in inches unless specified otherwise.

TITLE:
**8321 PREMIUM DOUBLE HUNG
NEW CONSTRUCTION
EXTERIOR ELEVATION**

SIZE:	A	SCALE:	1:16	DRAWING NUMBER:	8DH-1000-NC	REV:	-
		SHEET 1 OF 2					

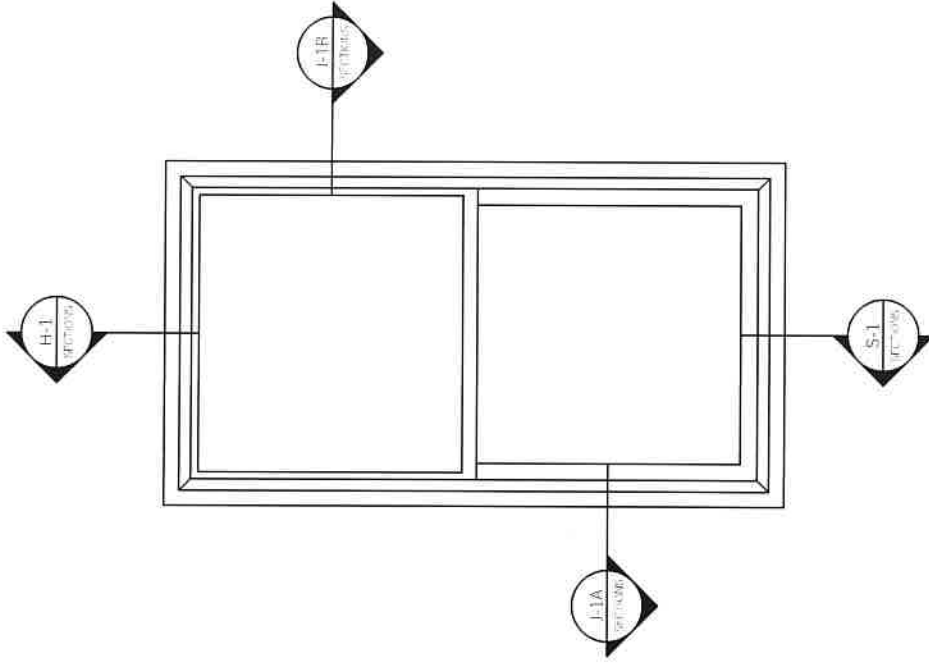


Reinforcement Included as required by unit size and performance ratings.

*7/16 Outer leg removed when J-Channel removal is specified.

	NOTICE: This document contains information that is proprietary to and is protected by copyright of Paradigm Window Solutions For Life. This information may not be copied, disclosed to others or used for any purpose other than that for which it is given without written permission from Paradigm. Copyright ©2021 Paradigm Window Solutions For Life. All Rights Reserved.	
	DIMENSION NOTE: All dimensions are in inches unless specified otherwise.	DRAWN: CW CHECKED: DE
	DATE: 5/14/21	DATE: 5/14/21
PART NUMBER: -	SCALE: 1:3	DRAWING NUMBER: 8DH-1000-NC
	SHEET 2 OF 2	REV: -

TITLE:
**8321 PREMIUM DOUBLE HUNG
 NEW CONSTRUCTION
 SECTIONS**

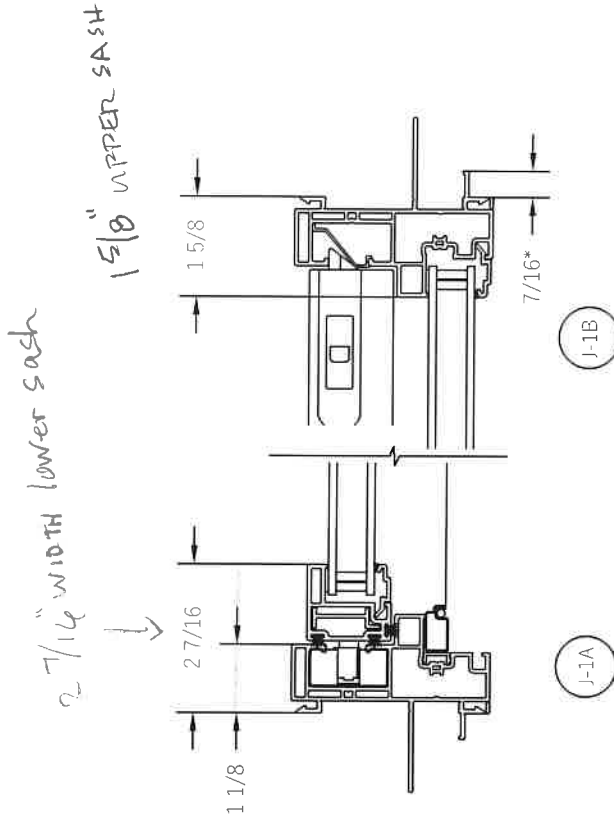
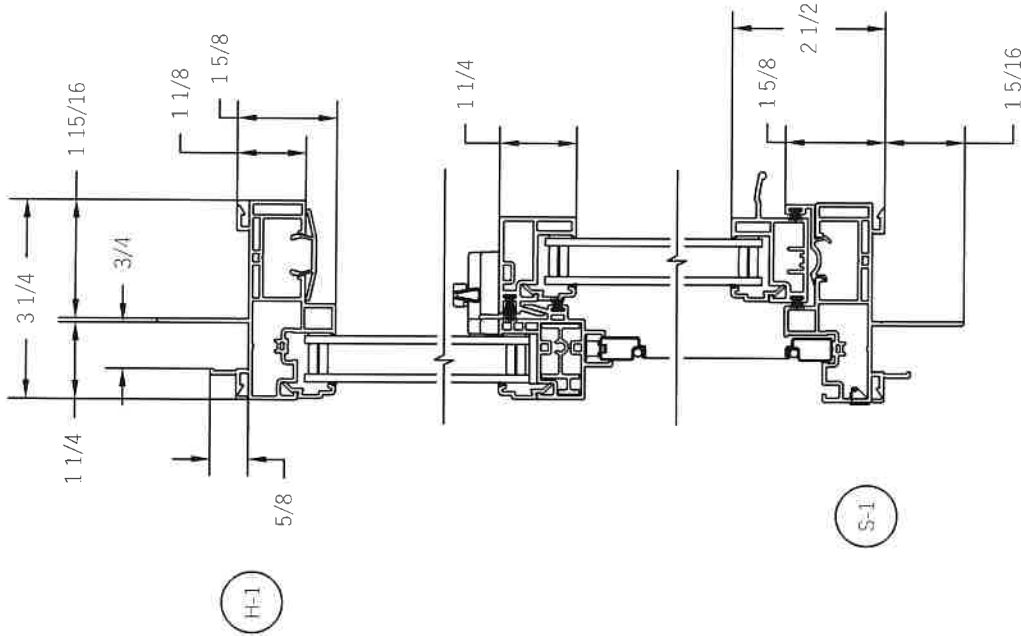


NOTICE: This document contains information that is proprietary to and is protected by copyright of Paradigm Window Solutions For Life. This information may not be copied, disclosed to others or used for any purpose other than that for which it is given without written permission from Paradigm. Copyright ©2021 Paradigm Window Solutions For Life. All Rights Reserved.

DRAWN:	CW	DATE:	6/1/21
CHECKED:	DE	DATE:	6/1/21
PART NUMBER:	-		

TITLE:
**8381 SINGLE HUNG
 NEW CONSTRUCTION
 EXTERIOR ELEVATION**

SIZE:	A	SCALE:	1:3	DRAWING NUMBER:	8SH-1003-NC	REV:	-
SHEET 2 OF 2							



S-1

Reinforcement Included as required by unit size and performance ratings.

*7/16 Outer leg removed when J-Channel removal is specified.



NOTICE: This document contains information that is proprietary to and is protected by copyright of Paradigm Window Solutions For Life. This information may not be copied, disclosed to others or used for any purpose other than that for which it is given without written permission from Paradigm. Copyright ©2021 Paradigm Window Solutions For Life. All Rights Reserved.

DIMENSION NOTE: All dimensions are in inches unless specified otherwise.	DRAWN: CW	DATE: 6/1/21
PART NUMBER: -	CHECKED: DE	DATE: 6/1/21

TITLE:
**8381 SINGLE HUNG
NEW CONSTRUCTION
SECTIONS**

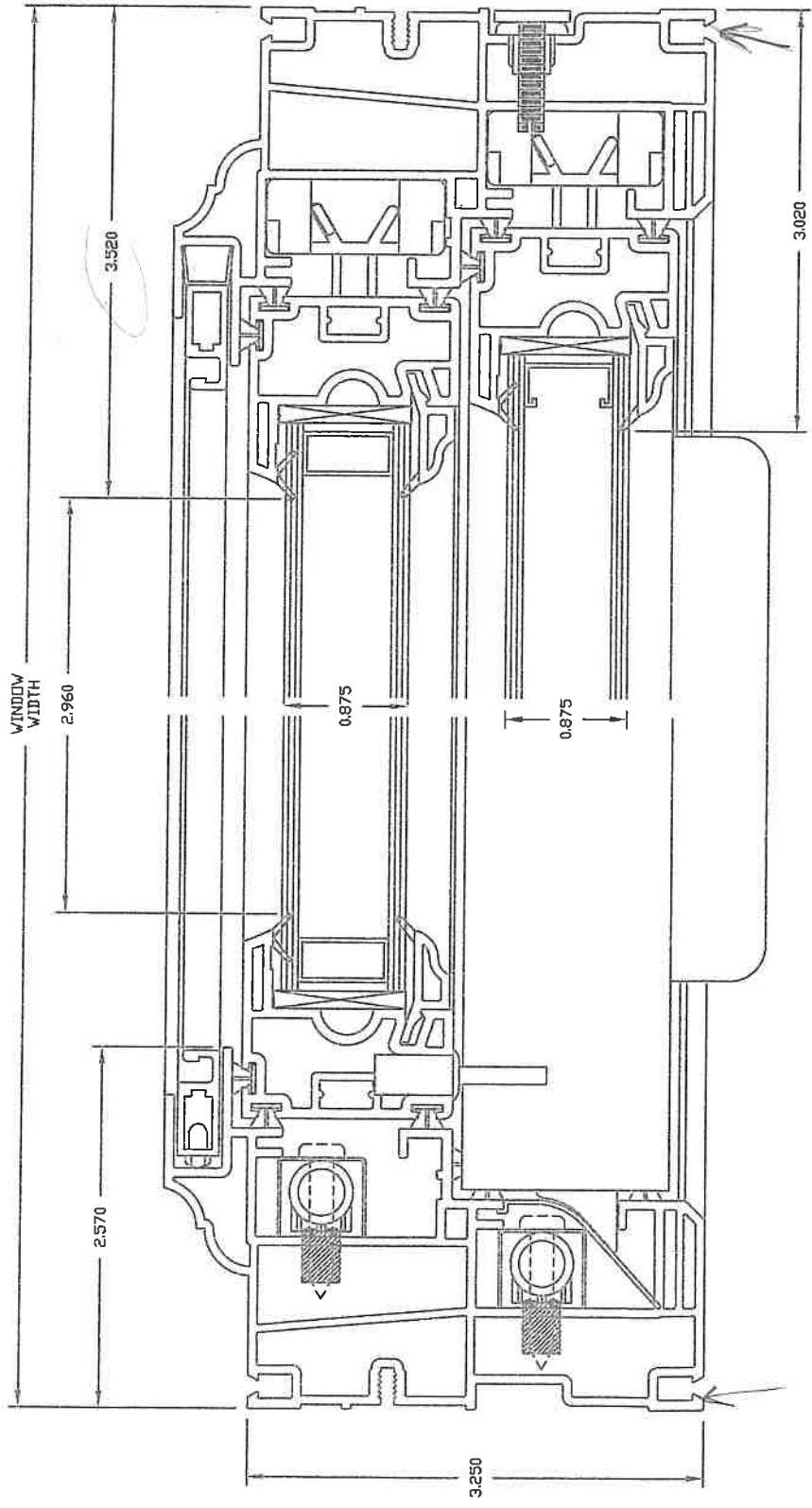
SIZE: A	SCALE: 1:3	DRAWING NUMBER: 85H-1003-NC	REV: -
SHEET 2 OF 2			

PROPERTY OF SUNRISE WINDOWS, LTD. ANY UNAUTHORIZED
USE IS STRICTLY PROHIBITED.



DESCRIPTION:	DOUBLE HUNG HORIZONTAL SECTION
DESIGN:	D.R.C.
SCALE:	FULL
DRAWN:	DATE: 03-15-14
APPROVED:	DATE:
MATERIAL:	
AREA:	
WT. PER FT.:	
DIE NO.:	
DRAWING NO.:	

REV.	BY	APP'D	DATE
CHANGE			



PROPERTY OF SUNRISE WINDOWS, LTD. ANY UNAUTHORIZED USE IS STRICTLY PROHIBITED.

REV.	BY	APPV'D	DATE

CHANGE



DESCRIPTION:

DOUBLE HUNG
VERTICAL SECTION

DESIGN:	SCALE:
DRAWN:	DATE:
APPROVED:	DATE:

MATERIAL:
AREA:
WT. PER FT.:
DIE NO.:
DRAWING NO.:

