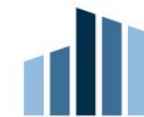




624 NORTH GLEBE PARK

PHASE 2 PARK NAMING

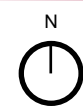
ParkerRodriguez



SOUTHEASTERN
DEVELOPMENT · BROKERAGE · CONSULTING



08.21.2024



624 NORTH GLEBE PARK
ARLINGTON, VA

PHASE 2 PARK NAMING
SITE PLAN



Illustrative Plan - Not To Scale

ParkerRodriguez

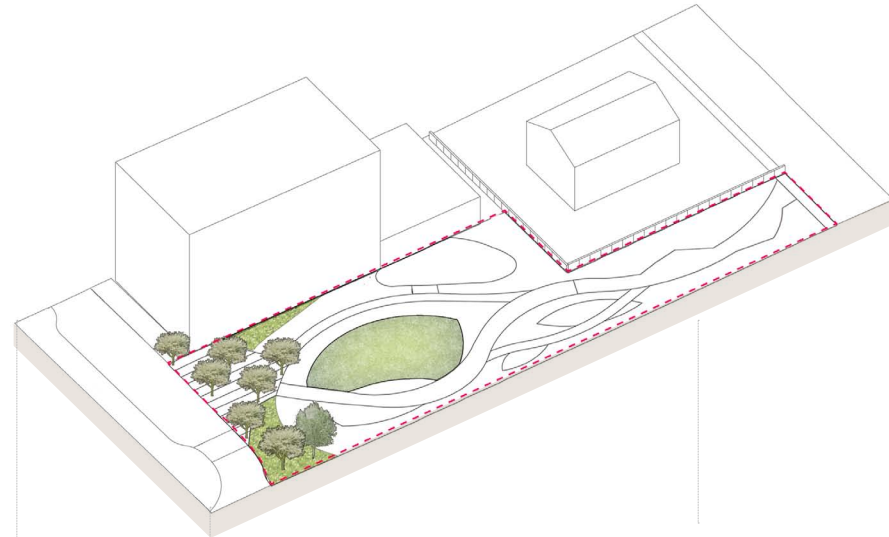
August 21, 2024

L-2

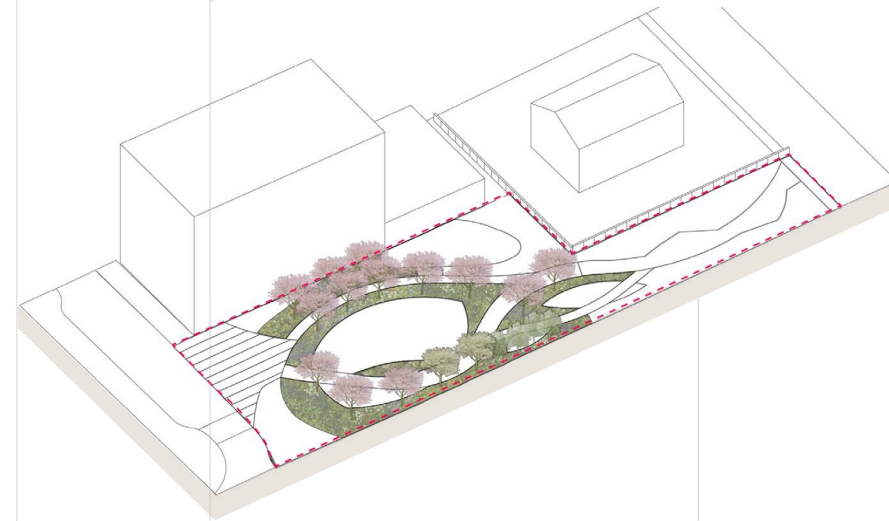
The use of carefully selected native planting palettes will be proposed to support each of the park's distinct character zones.

PLANTING ZONES

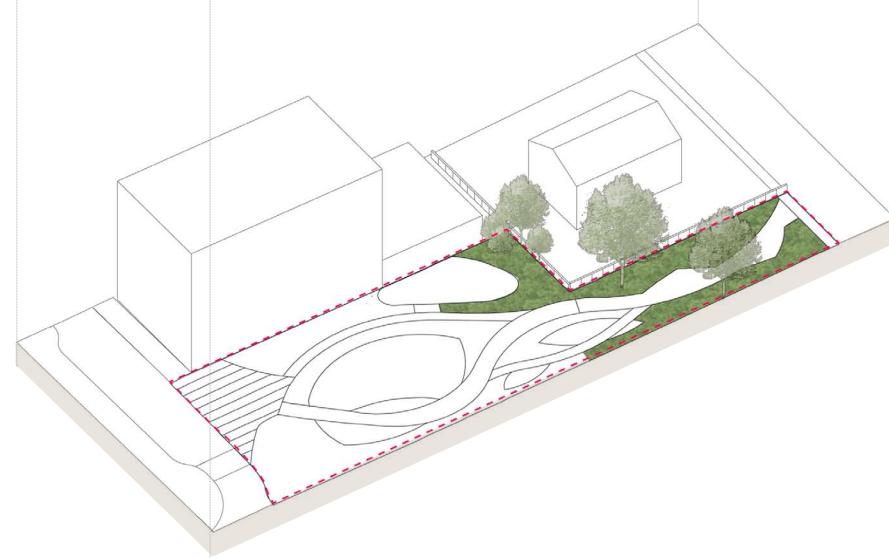
URBAN ZONE



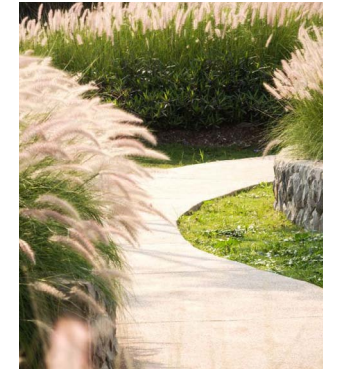
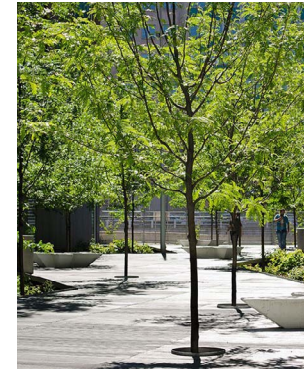
POLLINATOR MEADOW ZONE



WOODLAND ZONE



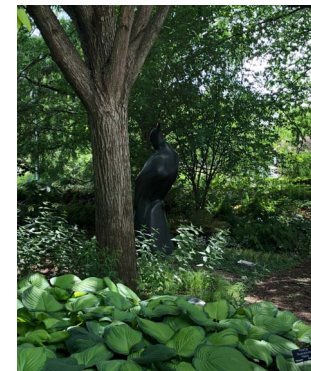
PLANTING INSPIRATION IMAGES



Urban Zone - A small urban arrival plaza is supported by a grid of structured canopy trees and planting.



Pollinator Meadow Zone - Swaths of wildflower follow meandering pathways, support biodiversity and frame open lawn to create a sense users are surrounded by nature.



Woodland Boardwalk Zone - The use of shade tolerant plant species underneath dense existing tree canopies.

PROPOSED NAMES

BUCKINGHAM POLLINATOR PARK

HISTORICAL GEOGRAPHICAL ECOLOGICAL

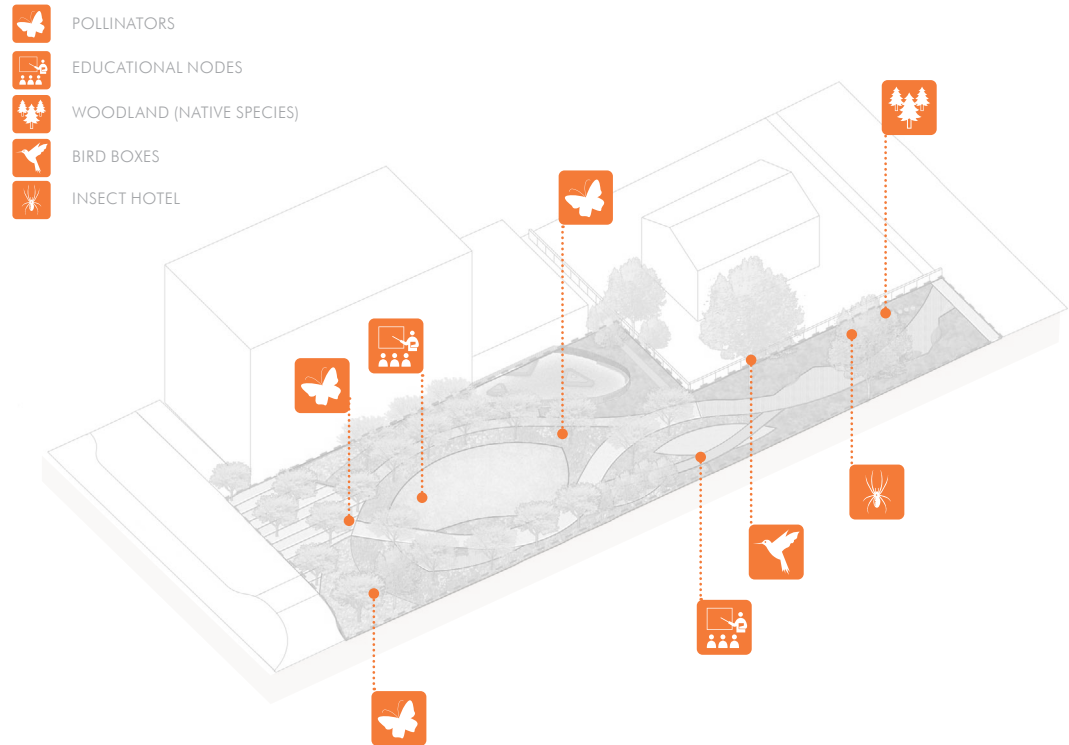
BUCKINGHAM MEADOW PARK

HISTORICAL GEOGRAPHICAL ECOLOGICAL

BUCKINGHAM GARDEN PARK

HISTORICAL GEOGRAPHICAL ECOLOGICAL

Pollinator friendly practices will be utilised throughout the park to enhance biodiversity and ensure a users have an opportunity to explore and enjoy nature as a contrast to the surrounding urban setting.



COUNTY REVIEW PROCESS



A detailed architectural rendering of a park. A large, mature tree with light-colored blossoms stands in the center. A paved path winds through the park, with people walking and sitting on benches. In the foreground, a child stands near a large rock with a sign. The background shows modern buildings and a fence. The scene is overlaid with a semi-transparent dark layer.

QUESTIONS + DISCUSSION

EDUCATIONAL CONTEXT

01. HISTORICAL CONTEXT AROUND THE PLAN

Located southwest of the site and adjacent to North Henderson Road is the Buckingham Village Historic District. Constructed from 1937-1953, the Buckingham Village Historic District employed the design principles of a Garden City, seeking to blend the characteristics of the city and the country to craft an alternative to crowded and unkempt urban environments. This was achieved through the Garden Apartments via numerous motifs, such as landscaped spaces that collectively created a greenway, porosity facilitating the the flow of light and air, and pedestrian circulation that was independent of vehicular movement. The Buckingham Village Historic District's articulation of these principles set the precedent for the development of future affordable communities in Arlington County, and demonstrated the benefit of integrating neighborhoods with the surrounding landscape and ecological elements.

02. INTENTION OF ENGAGEMENT

The intention of the engagement is to identify a park name that highlights its usage and broader purpose through ecological, cultural, and geographical characteristics. The site aims to educate visitors about ecological sustainability by immersing them in the landscape and greater ecosystem. Historically, the nearby landscape provided green relief in an urban environment. The present park design builds upon this practice by continuing to provide relief while cultivating educational spaces that fortify the ecological health of the landscape. This is demonstrated through the application of pollinator gardens throughout the site, which facilitate the activity of pollinator species and ultimately secure the enduring biodiversity present throughout the landscape.

03. OVERVIEW OF DESIGN

The park is designed to actively engage visitors through three distinct zones: The Urban Zone, The Pollinator Meadow Zone, and the Woodland Zone. Each area has unique ecological and programmatic characteristics which provide visitors with diverse ways of interacting with the site. The Urban Zone welcomes visitors of the park through an arrival plaza, delineated by an urban hardscape of pavers and seating areas. The defined softscape organizes canopy trees and planting along a grid, and features an open lawn for dynamic gathering and socializing. The Pollinator Meadow Zone invites visitors to traverse the soft meadow landscapes along a primary promenade with seating nodes that encourage reflection, discussion, and education. A secondary pathway engages with the flowing landscape while also incorporating the dog run. Finally, the Woodland Zone illuminates shade tolerant plant species and the dense canopies of existing trees, providing visitors with another opportunity to learn about the site ecology or to simply enjoy a serene landscape for reflection and recreation.

04. REASONS FOR DRAFT NAMES

"Buckingham Pollinator Park" illuminates the pollinator wildlife present throughout the park, encouraging active learning through informational signage about pollinator species.

"Buckingham Meadow Park" draws its name from the characteristic pollinator meadows within the site, which visitors are in close proximity to throughout their visit.

"Buckingham Garden Park" highlights the history of the nearby Buckingham Village Historic District, which housed the Garden Apartments and utilized the design principles of the Garden City to set a design precedent for the greater Arlington County region.