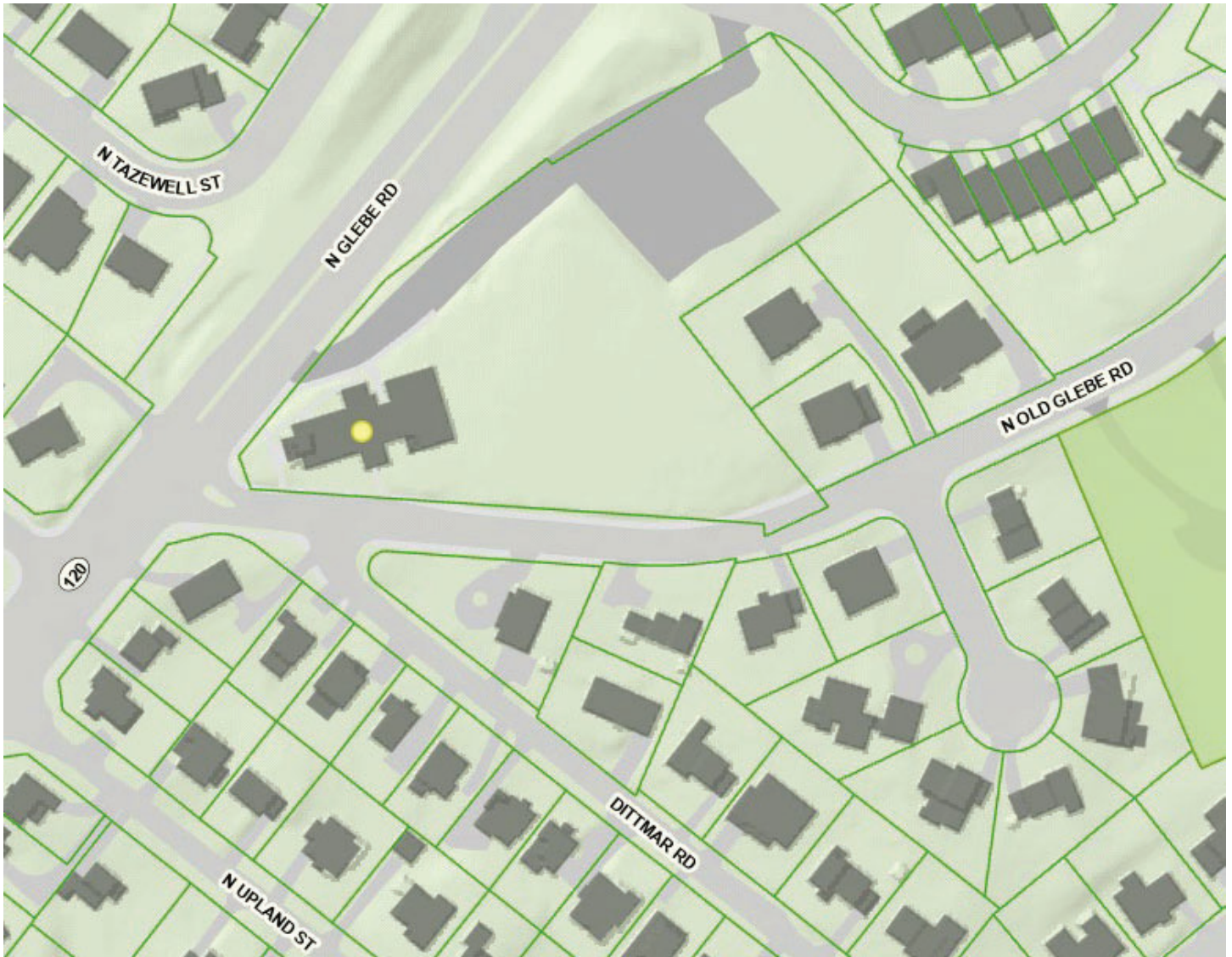


Historical Affairs and Landmark Review Board

Arlington County, Virginia



HALRB Meeting October 16, 2024, CoA 24-24

4102 N. Glebe Rd.: Request to remove two trees.



Walker Chapel United Methodist Church

Walker Chapel Historic Cemetery

4102 N Glebe Road, Arlington, Virginia 22207

703-538-5200 x106



September 11, 2024

APPLICATION FOR A CERTIFICATE OF APPROPRIATENESS FOR THE REMOVAL OF TWO TREES

In the middle of our cemetery stands a huge black cherry tree. The tree's branches stretch out to shade many gravesites and reach high into the sky. Two trees were planted, multiple trunks developed, and they grew tall. But they did not grow together. This past August, the larger tree pushed over the smaller tree, which was hardly small. We were left with a giant stump, massive, twisted roots just below ground, and a cavity in the standing tree where the fallen section had been. The cavity is lined with soft, crumbling, rotting wood. Mushrooms surround the base, signifying rot, and the limbs are covered with mold or fungus. Our concern is the remaining tree will fall and damage the many gravestones and gravesites within its reach.

Nearby at the little marble cross monument inscribed "budded on earth, blooming in heaven", stands a single-trunk black cherry tree. Tall but hidden among many other trees in a forested area. The top of the tree has leaves and is higher than most other trees. Coming down the trunk, there are dead branches rotting and falling to the ground almost daily, even in good weather.

Our primary concerns are two-fold. First, is the preservation of the nearby gravesites and irreplaceable historic grave stones. Second, is the safety of the many visitors to the cemetery and nocturnal wildlife.

OUR PROPOSAL:

We will use a high-quality tree service firm with a certified arborist to direct the removal operation. We will cover the ground with thick load-distributing panels to protect the gravesites and gravestones. We will remove those marble and soft stone monuments where they are loose on their foundations and shield those we cannot move. All parts of the trees will be cut into smaller pieces in place and lowered to the ground by ropes and pulleys...limbs will not simply fall to the ground. The cemetery manager will be present during all operations from initial cutting, to stump grinding, to removal of the grindings and repair of the ground with new topsoil and grass seed.

Please see the photographs and plat with the location of the two trees marked in red.

Blessings,

Larry Danforth

Cemetery Manager and Trustee (owner)



Walker Chapel Historic Cemetery — www.chapelcemetery.org — www.thecolumbarium.cloud — 703-538-5200 x106



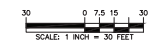
PROJECT VICINITY MAP
SCALE: 1" = 500'

SOURCE:
http://www.bing.com/maps



NOTES:

1. THE MERIDIAN OF THIS SURVEY IS REFERENCED TO THE VIRGINIA STATE PLANE COORDINATE SYSTEM NAD 83.
2. ELEVATIONS SHOWN ARE REFERENCED TO THE NORTH AMERICAN VERTICAL DATUM (NAVD 88).
3. PLANIMETRIC INFORMATION SHOWN HEREON HAS BEEN OBTAINED FROM GROUND SURVEYS BY LANGAN ENGINEERING AND ENVIRONMENTAL SERVICES, INC. DURING JUNE 2018.
4. OFFSETS (IF SHOWN) ARE FOR SURVEY REFERENCES ONLY AND SHOULD NOT BE USED IN CONSTRUCTION OF ANY TYPE. LANGAN ENGINEERING AND ENVIRONMENTAL SERVICES, INC. RECOMMENDS THE PLACEMENT OF SURVEY MARKERS.
5. METEOROLOGICAL AND/OR HAZARDOUS MATERIALS LOCATION, IF ANY, NOT COVERED UNDER THIS CONTRACT.
6. UNLESS SPECIFICALLY NOTED HEREON, STORM AND SANITARY SEWER INFORMATION (INCLUDING PIPE INVERT, PIPE MATERIAL, AND PIPE SIZE) WAS OBSERVED AND MEASURED AT FIELD LOCATED STRUCTURES (MANHOLES/CATCH BASINS, ETC.). CONDITIONS CAN VARY FROM THOSE ENCOUNTERED AT THE TIMES WHEN AND THE LOCATIONS WHERE DATA WAS OBTAINED. DESPITE MEETING THE REQUIRED STANDARD OF CARE, THE SURVEYOR CANNOT AND DOES NOT WARRANT THAT PIPE MATERIAL AND/OR PIPE SIZE THROUGHOUT THE PIPE RUN IS STRAIGHT BETWEEN THE LOCATED STRUCTURES. ADDITIONAL UTILITY (WATER, GAS, ELECTRIC ETC.) DATA SHOWN FROM FIELD LOCATED EXISTING STRUCTURES AND/OR FROM EXISTING DRAWINGS, UNLESS SPECIFICALLY NOTED HEREON THE SURVEYOR HAS NOT EXCAVATED TO PHYSICALLY LOCATE THE UNDERGROUND UTILITIES. THE SURVEYOR MAKES NO GUARANTEE THAT THE SHOWN UNDERGROUND UTILITIES ARE EITHER IN SERVICE, ABANDONED OR SUITABLE FOR USE. NOR ARE IN THE EXACT LOCATION OR CONFIGURATION INDICATED HEREON.
7. PRIOR TO ANY DESIGN OR CONSTRUCTION THE PROPER UTILITY AGENCIES MUST BE CONTACTED FOR VERIFICATION OF UTILITY TYPE AND FOR FIELD LOCATIONS.
8. ALL CURBS IN THE SITE ARE CONCRETE.



LEGEND (NOT SHOWN TO SCALE)

- AIR CONDITIONING UNIT
- BOLLARD
- COLUMN
- △ DOOR
- DOUBLE DOOR
- ▽ VENT
- ▽ SIGN
- ▽ SHRUB
- TREE
- GROUND LIGHT
- CABLE BOX HAND HOLE
- CATCH BASIN
- CLEANOUT
- ELECTRIC BOX
- ELECTRIC METER
- FIRE HYDRANT
- GAS METER
- GAS VALVE
- GUY WIRE
- LIGHT POLE
- MANHOLE (TYPE AS LABELED)
- POWER POLE
- ROOF DRAIN
- LIGHT POLE
- BENCH
- TRAFFIC BOX
- WATER METER
- WATER VALVE
- SPOT ELEVATION
- IRON PIPE FOUND
- PK NAIL FOUND
- MONUMENT FOUND
- CONCRETE PAD
- LANDSCAPED AREA
- TOP OF WALL
- BOTTOM OF WALL
- TOP OF CURB
- BOTTOM OF CURB
- STOCKADE FENCE
- CHAINLINK FENCE
- TREE LINE
- OVERHEAD WIRE
- EASEMENT LINE
- PROPERTY LINE
- RIGHT-OF-WAY LINE
- CONTOUR LINE
- DRAINAGE MARK OUT LINE
- ELECTRIC MARK OUT LINE
- COMMUNICATION MARK OUT LINE
- GAS MARK OUT LINE
- SANITARY SEWER MARK OUT LINE
- WATER MARK OUT LINE
- UNKNOWN MARK OUT LINE
- REFERENCE UTILITY LINE (TYPE AS NOTED) - PLOTTED FROM EXISTING MAPPING
- CEMETERY AREA

REVISIONS		
Date	Description	No.

LANGAN
Langan Engineering and Environmental Services, Inc.
1300 Wilson Boulevard, Suite 450
Arlington, VA 22209
T: 571.366.6800 F: 571.366.6801 www.langan.com

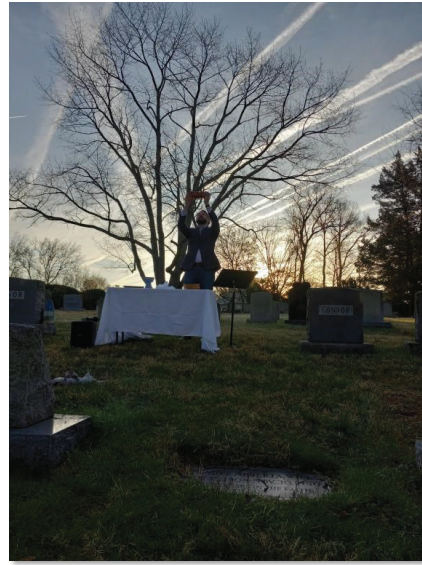
Project
WALKER CHAPEL METHODIST CHURCH
84102 NORTH CLERE ROAD
Arlington County Virginia
Drawing Title
PARTIAL TOPOGRAPHIC SURVEY PLAN

Project No. 270082201	Drawing No. VT101
Date 04/24/2020	
Drawn By IDC	
Checked By CMC	Sheet 3 of 19

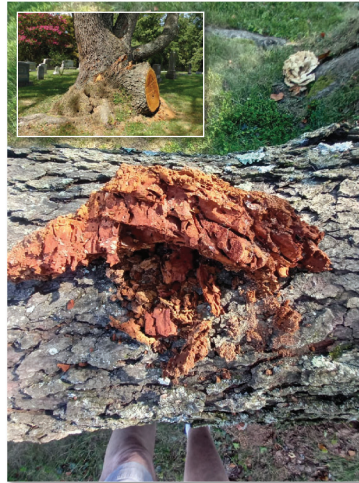
Walker Chapel Historic Cemetery

Tree #1: A multi-trunk black cherry tree. Very large, prominent, loved, and old as seen on Easter Sunday.

Two trees were planted, developed multiple trunks and grew tall. But they did not grow together. This past August the larger tree pushed over the smaller tree, which was hardly small.



We were left with a huge stump, huge twisted roots just below ground, and a cavity in the standing tree where the fallen section had been. The cavity was lined with soft, crumbling, rotting wood. Here you see a section pulled out by hand, compromised, and crumbling to the touch.



Mushrooms surround the base signifying rot, and the limbs are covered with some sort of mold or fungus.





On closer inspection, the main trunk before branching into three trunks has a rotten core. A core easily penetrated with a hand tool and broken off in pieces.

The roots of both trees are visible for many feet underground but have been badly twisted and ripped apart by the the section that fell to the ground miraculously missing every gravestone.



Our concern is the remaining tree will fall and damage the many gravestones and gravesites within its reach. While we lament the loss of the tree, we can always plant another tree. We have planted 19 trees in the past year. We cannot replace artistic one-of-a-kind stones carved in soft marble.

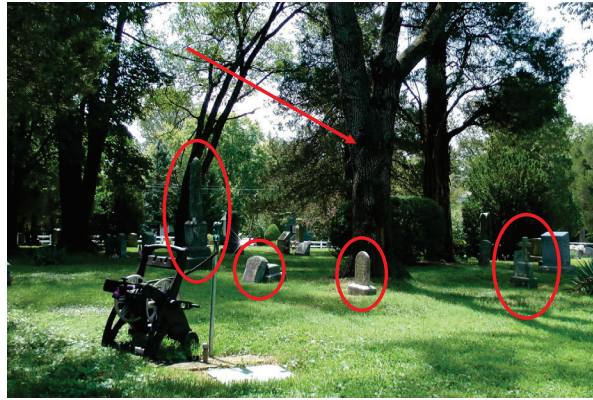
We have consulted two noteworthy tree companies who employ arborists to advise us and the staff on the proper removal of large trees while caring for the surrounding gravesites. JL Tree Service even described the task as one of bringing down a large, compromised tree in a mine field.

Walker Chapel cemetery staff will be present during all operations to ensure the beauty and sanctity of our cemetery is protected. We request a permit and approval of the HARLB to remove the tree as soon as possible.

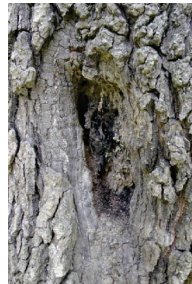


Walker Chapel Historic Cemetery

Tree #2: A single-trunk black cherry tree. Tall but hidden among many other trees in a forested area of the cemetery.

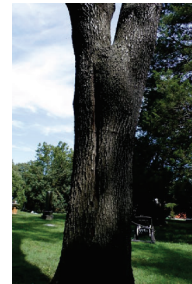


The top of the tree has leaves and is higher than most of the other trees. Coming down the trunk there is nothing but dead branches that are rotting and falling to the ground almost every day.



The base of the tree has split open and suffered deep holes from carpenter bees. Nearby, an old limb has rotted deep into the core of the tree.

On the other side of the tree there is a long split where the two trunks appear to be separating, further compromising the tree.



Our concern is the tree will fall and damage the many gravestones and gravesites within its reach. Four ancient gravestones are shown circled in red. An obelisk with two large cracks, a small cross on an infant that was "budded on Earth, Blooming in Heaven," a broken stone, and a soft stone that would disintegrate if hit by the tree. This is not a tree we would miss and we have planted 19 trees in the past year. We would miss the four irreplaceable stones.

We have consulted two noteworthy tree companies who employ arborists to advise us and their staff on the proper removal of large trees while caring for the surrounding gravesites. Both have assured us they can lower the tree down in pieces with ropes with no damage to the stones or ground.

Walker Chapel cemetery staff will be present during all operations to ensure the beauty and sanctity of our cemetery is protected. We request a permit and approval of the HARLB to remove the tree as soon as possible.