

Mt. Salvation Baptist Church

1961 N. Culpeper Street

Arlington, Virginia 22207

Rev. Marcellous D. Mack, Pastor

(703) 525-3727

Fax (703) 525-3703

Deacon Fred Bowles

Chairman of Deacon Board

(571) 338-6366

Trustee Lawrence Williams, Jr

Chairman of Trustee Board

(703) 447-0414

Deaconess Portia Haskins

Church Clerk

(571) 282-8963

Sister Linda Moody

Administrative Assistant

(571) 265-2359

21 August 2024

Ms. Mical Tawney, Historic Preservation Specialist
Landmark Review Board
2100 Clarendon Blvd., Suite 700
Arlington, VA 22201

Greetings Ms. Tawney,

This concerns the Mt. Salvation Baptist Church Cemetery at 1961 N. Culpeper St., Arlington, VA 22207. We are applying for a Certificate of Appropriateness to have trees removed that are dying and which pose a danger to property and life. There is one particular large tree which could fall on the church building structure at any time. Two other trees have been removed because they posed a danger to adjacent property. We have placed no dogs allowed signs on the property to prevent and warn individuals from walking dogs on the cemetery, leaving waste and disturbing the grounds.

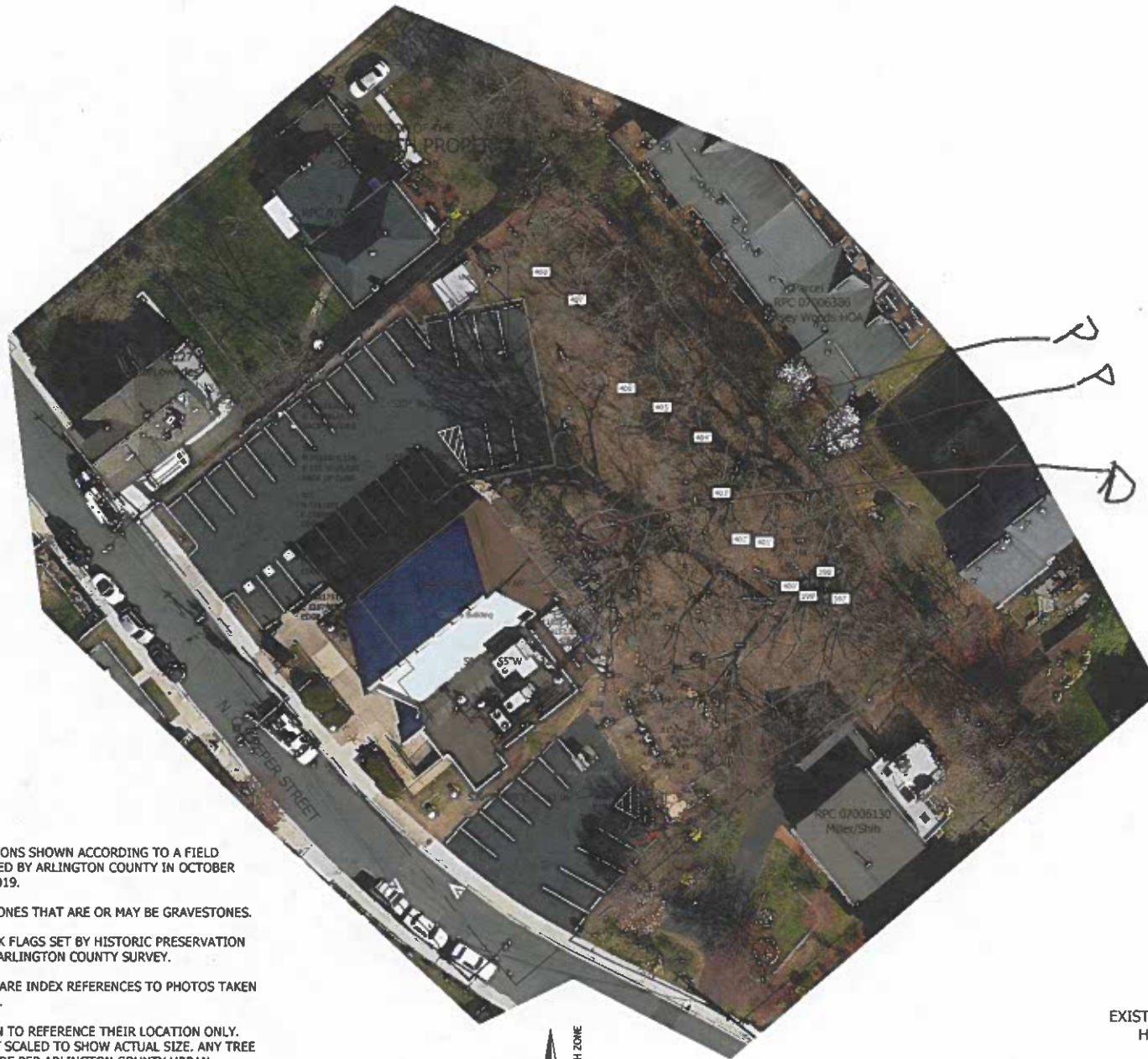
We request that all these items be considered at your next Review board meeting. Aerial view map with markers is attached.

SINCERELY,



TRUSTEE LAWRENCE WILLIAMS
CHAIRMAN, MSBC TRUSTEE MINISTRY

D = dead tree
 P = previously removed trees



NOTES:

EXISTING CONDITIONS SHOWN ACCORDING TO A FIELD SURVEY CONDUCTED BY ARLINGTON COUNTY IN OCTOBER AND NOVEMBER 2019.

'STN' DENOTES STONES THAT ARE OR MAY BE GRAVESTONES.

'PF' DENOTES PINK FLAGS SET BY HISTORIC PRESERVATION AND LOCATED BY ARLINGTON COUNTY SURVEY.

NUMBERS SHOWN ARE INDEX REFERENCES TO PHOTOS TAKEN AT THE CEMETERY.

TREES ARE SHOWN TO REFERENCE THEIR LOCATION ONLY. SYMBOLS ARE NOT SCALED TO SHOW ACTUAL SIZE. ANY TREE SPECIES SHOWN ARE PER ARLINGTON COUNTY URBAN FORESTER REPORT FROM JUNE, 2016.

COORDINATES FOR POINTS ARE SHOWN TO ASSIST IN SCALING IN ANY ADDITIONAL OBJECTS.

COORDINATES ARE IN THE VIRGINIA STATE COORDINATE SYSTEM (NORTH ZONE) AND ARE NOT SCALED.

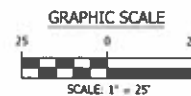


EXHIBIT SHOWING
 EXISTING CONDITIONS AND PROPOSED LOCAL
 HISTORIC DISTRICT ON PROPERTY OF
**MOUNT SALVATION
 BAPTIST CHURCH**

ARLINGTON COUNTY, VIRGINIA
 SHEET 1 OF 1







**NO
DOGS
ON
CHURCH
PROPERTY**

NO
DOGS
ON
CHURCH
PROPERTY





FASTSIGNS Alexandria
7681 Richmond Highway
Alexandria, VA 22306
703.768.7446
www.fastsigns.com/121

D = dead tree
 P = previously removed trees
 X = sign



NOTES:

EXISTING CONDITIONS SHOWN ACCORDING TO A FIELD SURVEY CONDUCTED BY ARLINGTON COUNTY IN OCTOBER AND NOVEMBER 2019.

'STN' DENOTES STONES THAT ARE OR MAY BE GRAVESTONES.

'PF' DENOTES PINK FLAGS SET BY HISTORIC PRESERVATION AND LOCATED BY ARLINGTON COUNTY SURVEY.

NUMBERS SHOWN ARE INDEX REFERENCES TO PHOTOS TAKEN AT THE CEMETERY.

TREES ARE SHOWN TO REFERENCE THEIR LOCATION ONLY. SYMBOLS ARE NOT SCALED TO SHOW ACTUAL SIZE. ANY TREE SPECIES SHOWN ARE PER ARLINGTON COUNTY URBAN FORESTER REPORT FROM JUNE, 2016.

COORDINATES FOR POINTS ARE SHOWN TO ASSIST IN SCALING IN ANY ADDITIONAL OBJECTS.

COORDINATES ARE IN THE VIRGINIA STATE COORDINATE SYSTEM (NORTH ZONE) AND ARE NOT SCALED.

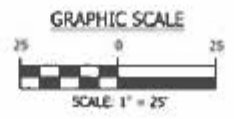


EXHIBIT SHOWING
 EXISTING CONDITIONS AND PROPOSED LOCAL
 HISTORIC DISTRICT ON PROPERTY OF
**MOUNT SALVATION
 BAPTIST CHURCH**
 ARLINGTON COUNTY, VIRGINIA
 SHEET 1 OF 1