



NOTES:

EXISTING CONDITIONS SHOWN ACCORDING TO A FIELD SURVEY CONDUCTED BY ARLINGTON COUNTY IN OCTOBER AND NOVEMBER 2019.

'STN' DENOTES STONES THAT ARE OR MAY BE GRAVESTONES.

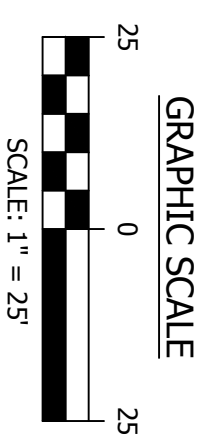
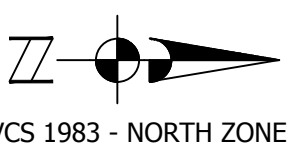
'PF' DENOTES PINK FLAGS SET BY HISTORIC PRESERVATION AND LOCATED BY ARLINGTON COUNTY SURVEY.

NUMBERS SHOWN ARE INDEX REFERENCES TO PHOTOS TAKEN AT THE CEMETERY.

TREES ARE SHOWN TO REFERENCE THEIR LOCATION ONLY. SYMBOLS ARE NOT SCALED TO SHOW ACTUAL SIZE. ANY TREE SPECIES SHOWN ARE PER ARLINGTON COUNTY URBAN FORESTER REPORT FROM JUNE, 2016.

COORDINATES FOR POINTS ARE SHOWN TO ASSIST IN SCALING IN ANY ADDITIONAL OBJECTS.

COORDINATES ARE IN THE VIRGINIA STATE COORDINATE SYSTEM (NORTH ZONE) AND ARE NOT SCALED.



EXISTING SHOWING
 EXISTING CONDITIONS AND PROPOSED LOCAL
 HISTORIC DISTRICT ON PROPERTY OF
**MOUNT SALVATION
 BAPTIST CHURCH**

ARLINGTON COUNTY, VIRGINIA
 SHEET 1 OF 1