



JBG SMITH

RiverHouse Neighborhood

November 16, 2023



LRPC #3 OUTLINE

1. WHAT WE HAVE HEARD
2. WHAT WE HAVE CHANGED
3. OVERALL CIRCULATION NETWORK REVIEW
4. AREAS FOR FURTHER STUDY DURING SPRC
5. APPENDIX

RiverHouse will Embrace and Enrich the Neighborhood

Listen & Engage



Mix of Heights



Diversity of Housing



Accessible Connections



Stoop Culture



Neighborhood Goods & Services



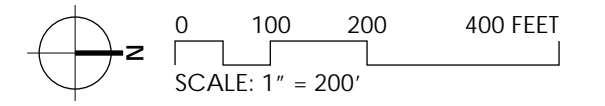
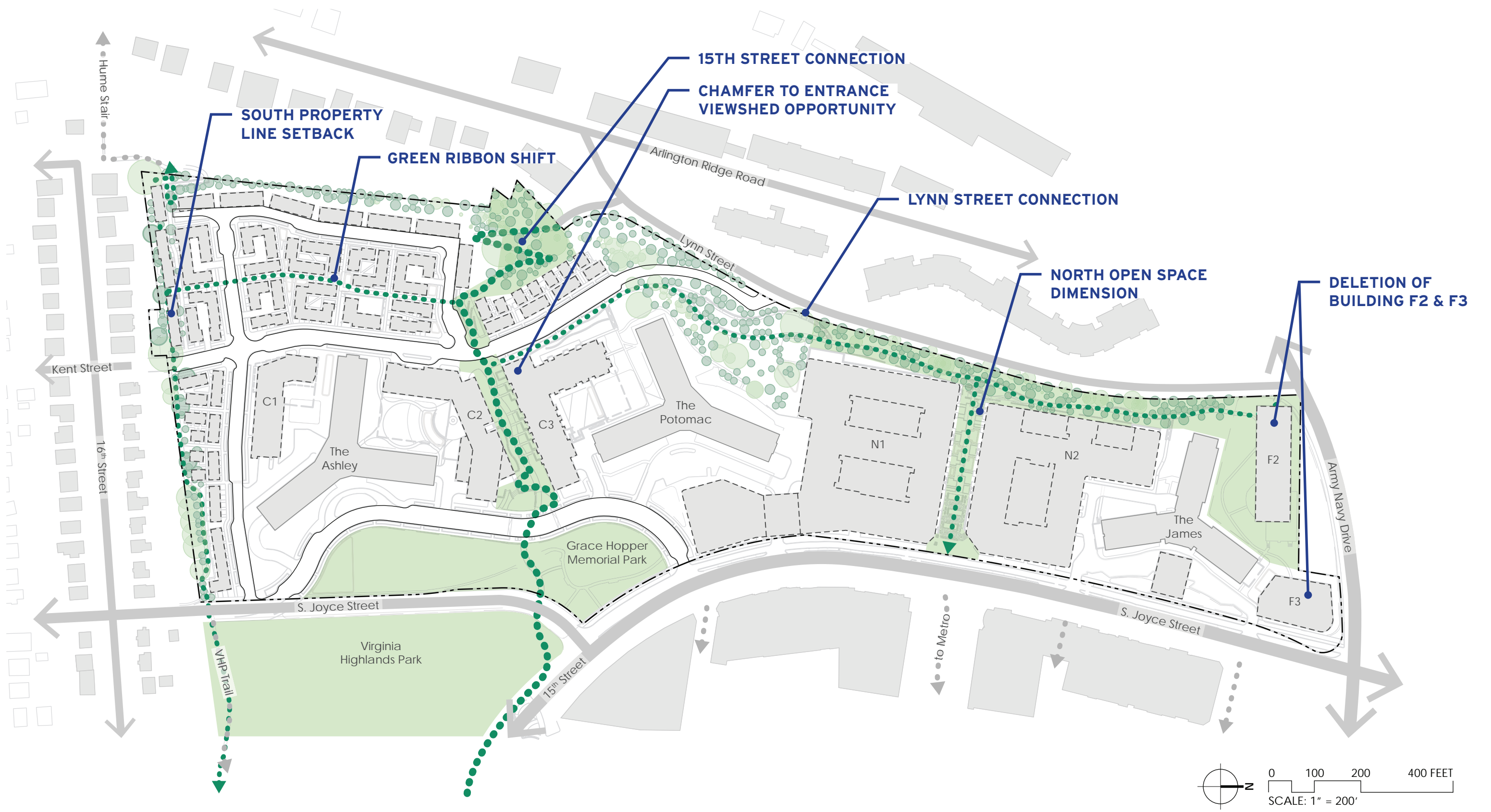
Forested Spaces



Demonstrate Sustainability



4.1 SUBMISSION SITE PLAN

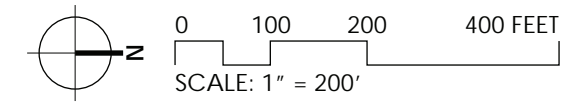
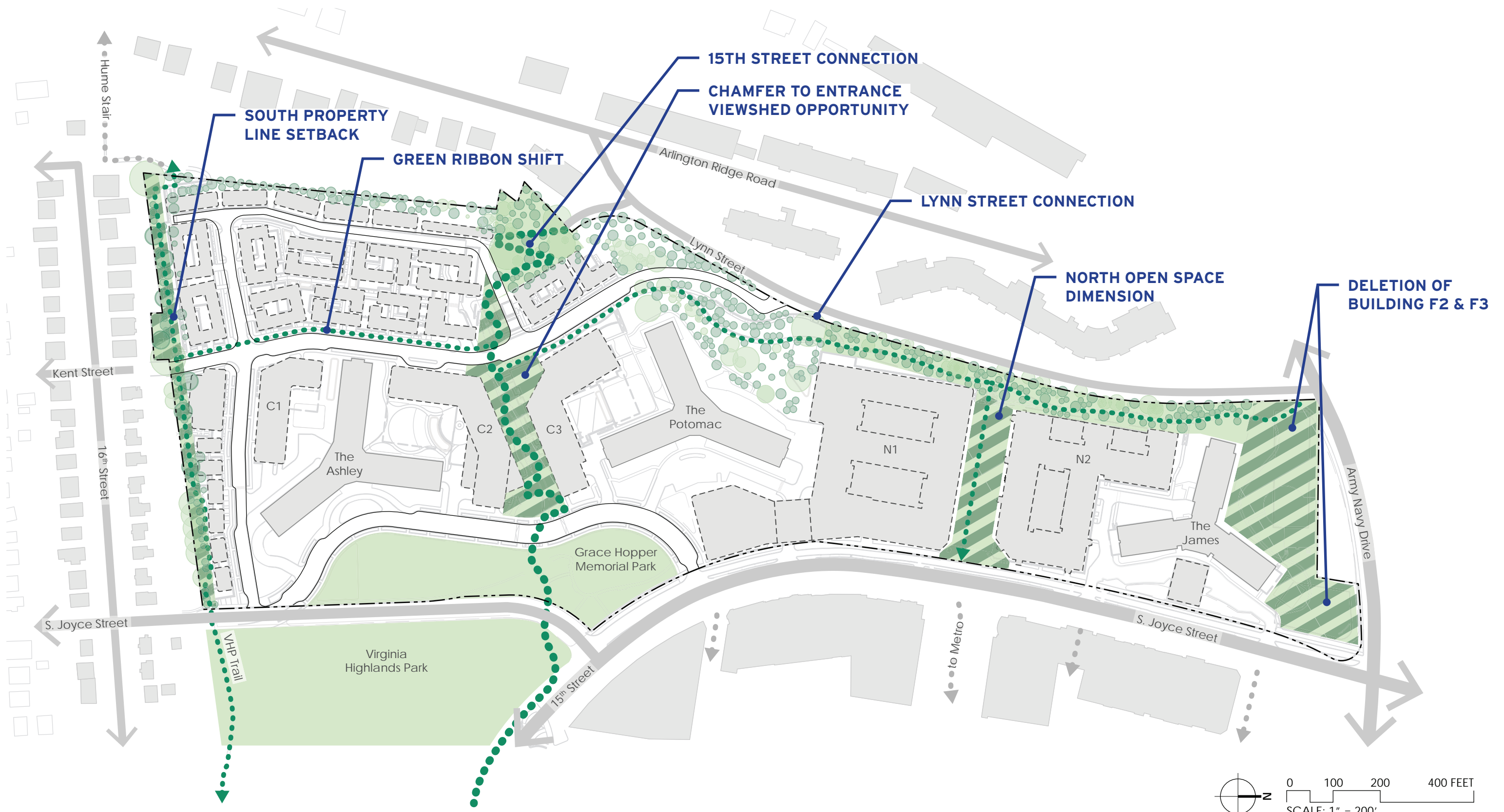


November 16, 2023 | ©2023 Torti Gallas + Partners | Grimke School, 1923 Vermont Ave NW, 2nd Floor | Washington, DC 20001 | 301.588.4800



RIVERHOUSE NEIGHBORHOOD

LRPC #3 SITE PLAN



November 16, 2023 | ©2023 Torti Gallas + Partners | Grimke School, 1923 Vermont Ave NW, 2nd Floor | Washington, DC 20001 | 301.588.4800

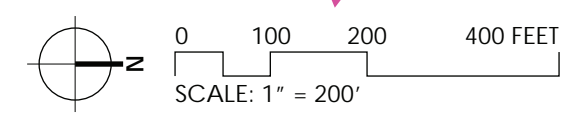
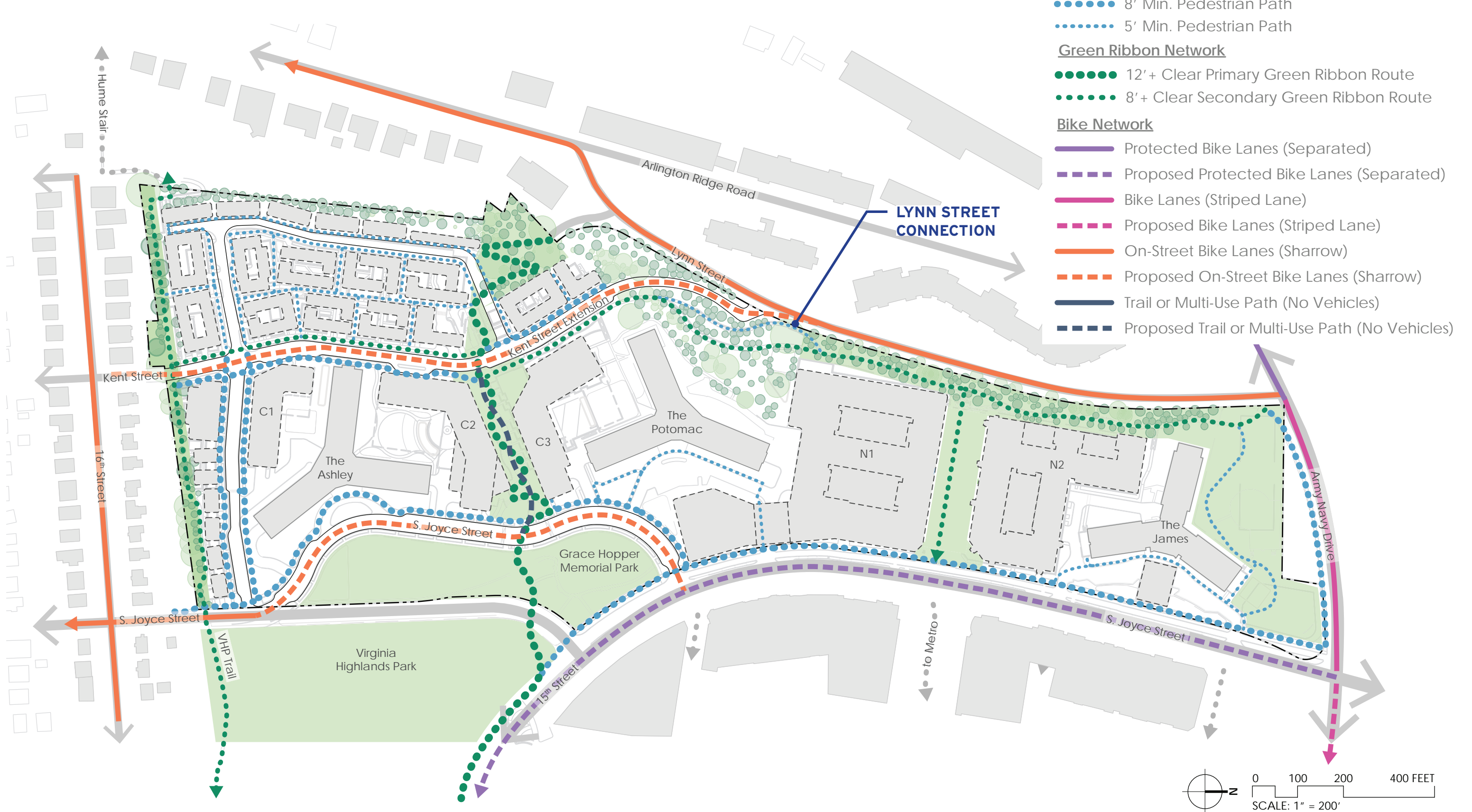


HYBRID



RIVERHOUSE NEIGHBORHOOD

OVERALL CIRCULATION NETWORK

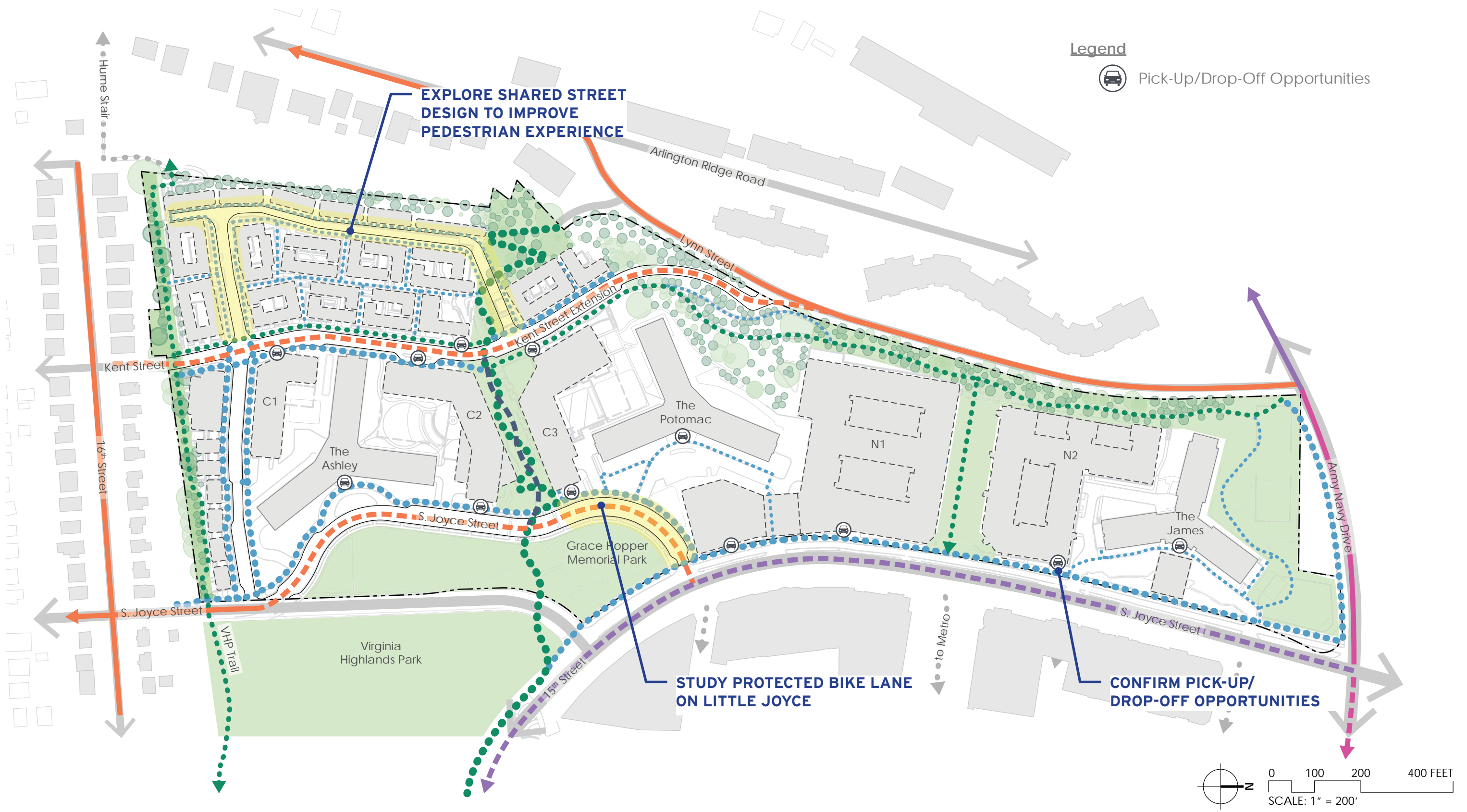


November 16, 2023 | ©2023 Torti Gallas + Partners | Grimke School, 1923 Vermont Ave NW, 2nd Floor | Washington, DC 20001 | 301.588.4800

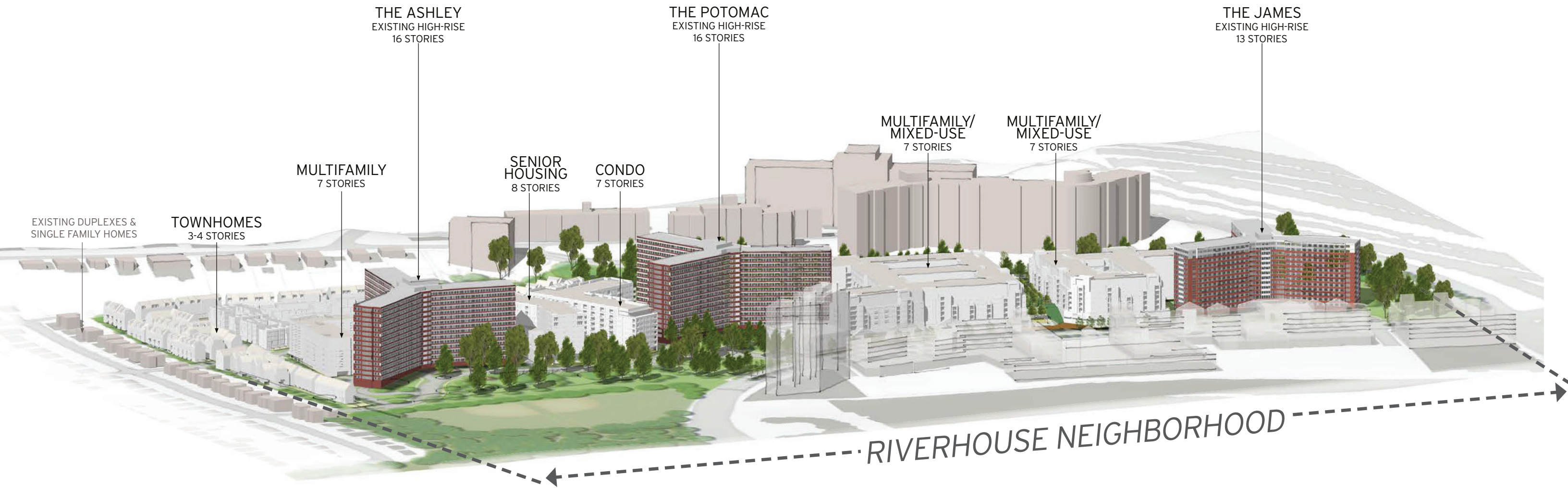


RIVERHOUSE NEIGHBORHOOD

AREAS IDENTIFIED FOR FURTHER STUDY IN SPRC



RIVERHOUSE NEIGHBORHOOD



APPENDIX

CIRCULATION NETWORK - LANDBAY S

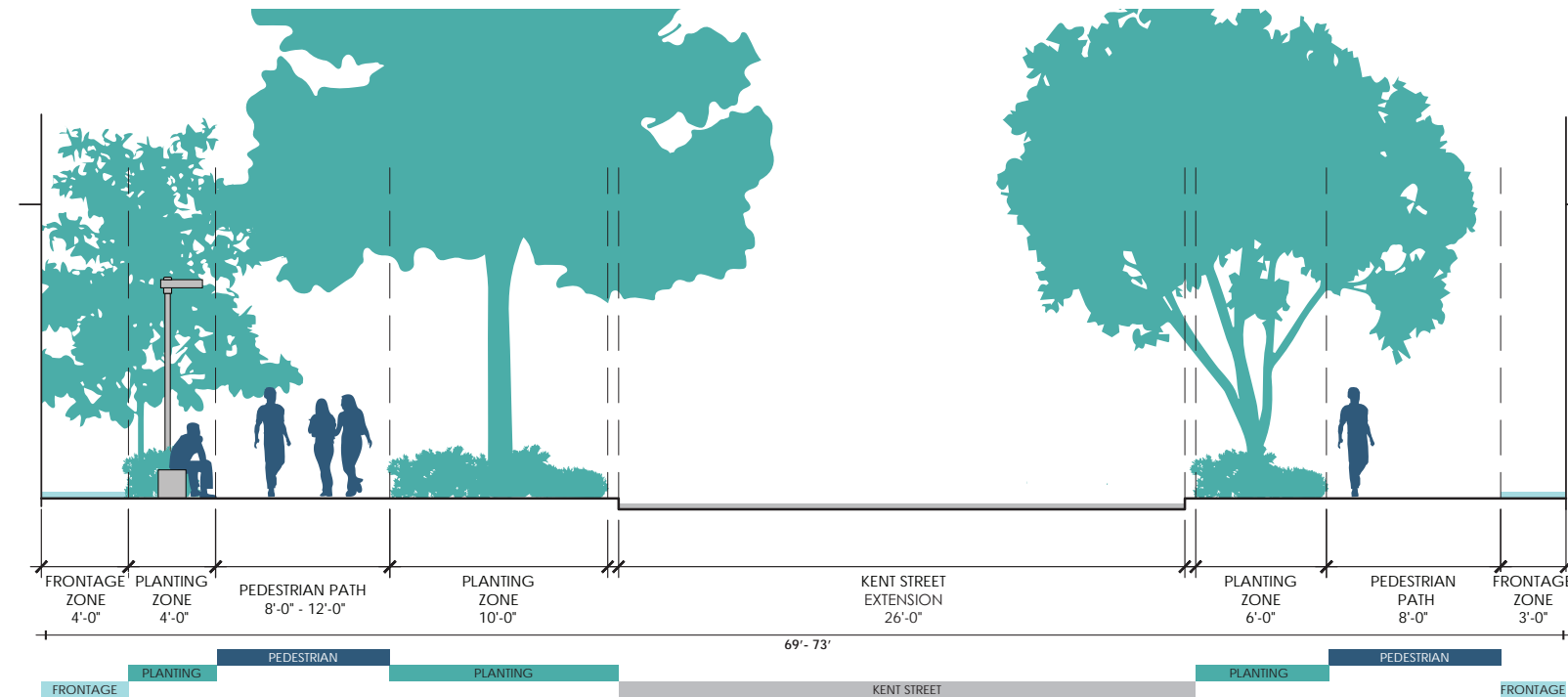
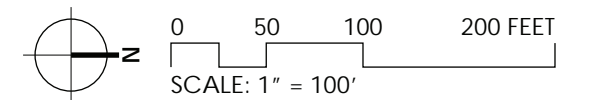


Pedestrian Network

- 8' Min. Pedestrian Path
- 5' Min. Pedestrian Path

Green Ribbon Network

- 12' + Clear Primary Green Ribbon Route
- 8' + Clear Secondary Green Ribbon Route



KENT STREET CORRIDOR

November 16, 2023 | ©2023 Torti Gallas + Partners | Grimke School, 1923 Vermont Ave NW, 2nd Floor | Washington, DC 20001 | 301.588.4800

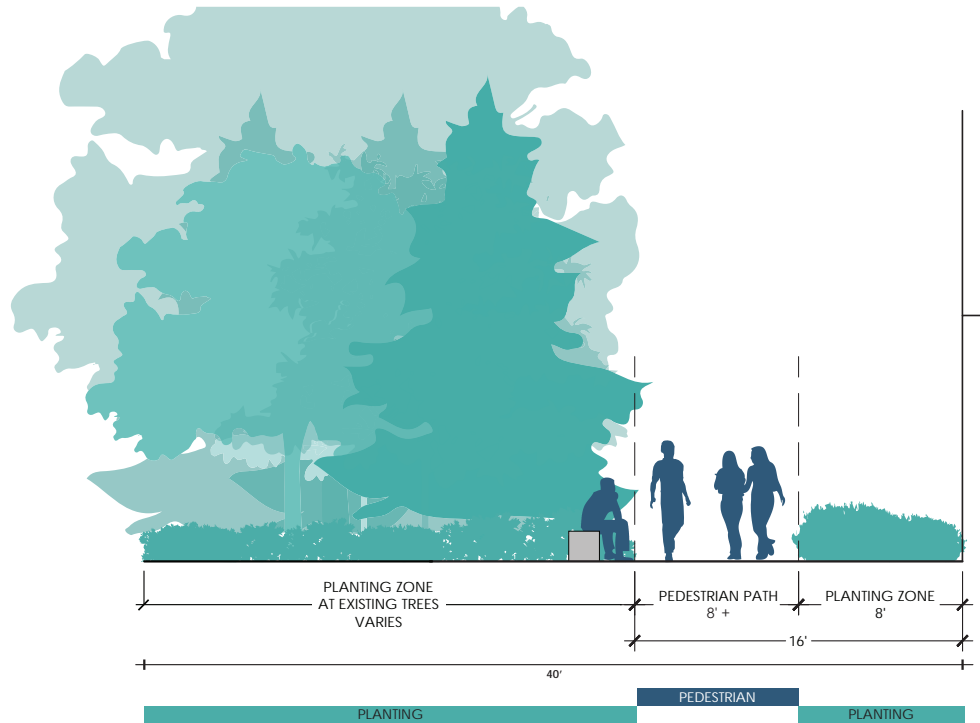
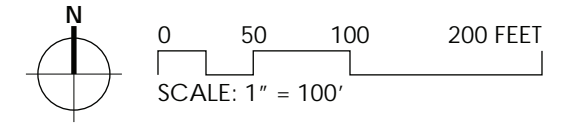


RIVERHOUSE NEIGHBORHOOD

CIRCULATION NETWORK - LANDBAY S



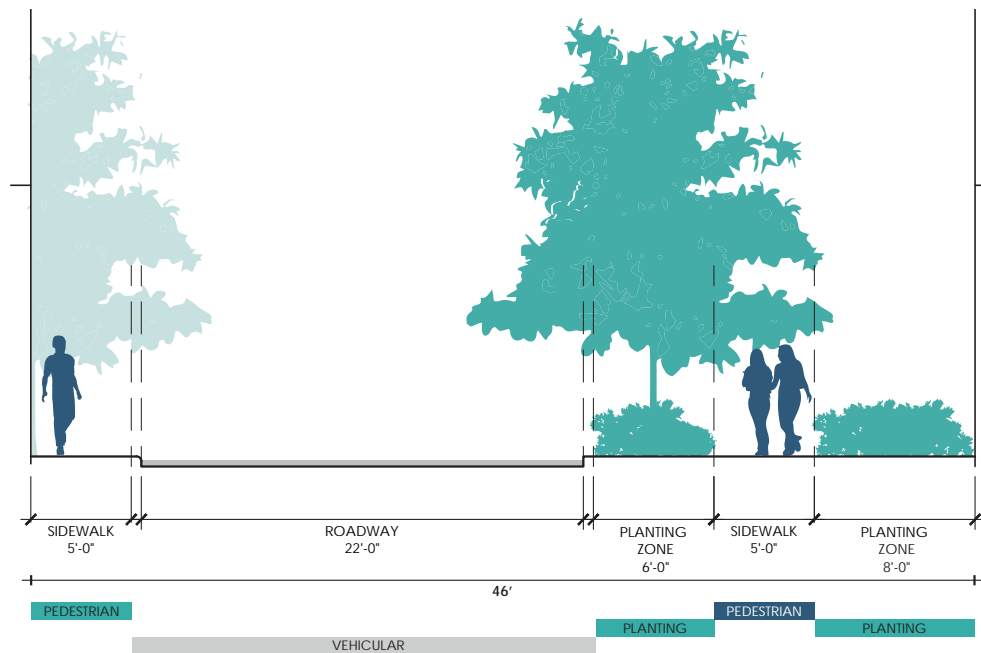
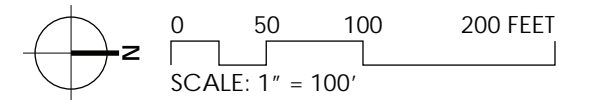
- Pedestrian Network**
- 8' Min. Pedestrian Path
 - 5' Min. Pedestrian Path
- Green Ribbon Network**
- 12' + Clear Primary Green Ribbon Route
 - 8' + Clear Secondary Green Ribbon Route



CIRCULATION NETWORK - LANDBAY S



- Pedestrian Network**
- 8' Min. Pedestrian Path
 - 5' Min. Pedestrian Path
- Green Ribbon Network**
- 12' + Clear Primary Green Ribbon Route
 - 8' + Clear Secondary Green Ribbon Route



November 16, 2023 | ©2023 Torti Gallas + Partners | Grimke School, 1923 Vermont Ave NW, 2nd Floor | Washington, DC 20001 | 301.588.4800



RIVERHOUSE NEIGHBORHOOD

CIRCULATION NETWORK - LANDBAY C

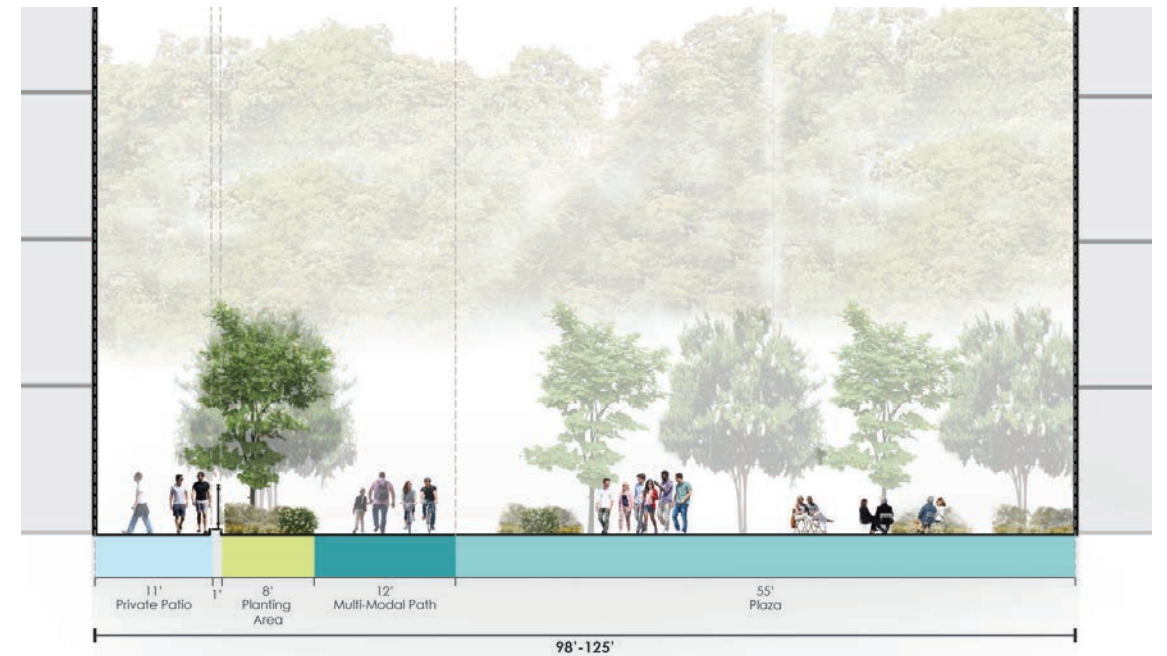
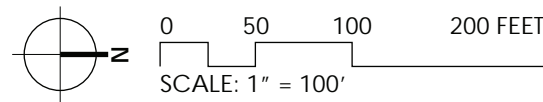


Pedestrian Network

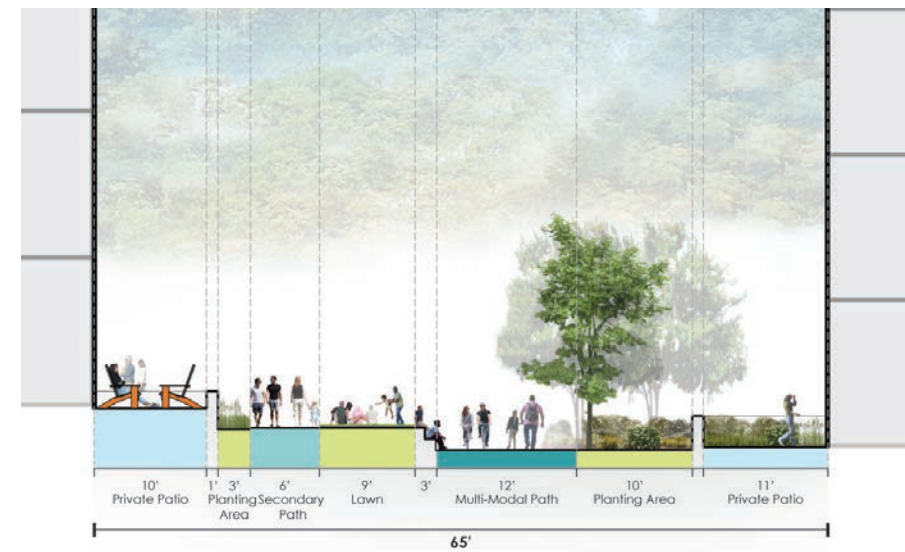
- 8' Min. Pedestrian Path
- 5' Min. Pedestrian Path

Green Ribbon Network

- 12'+ Clear Primary Green Ribbon Route
- 8'+ Clear Secondary Green Ribbon Route



SECTION A



SECTION B

CIRCULATION NETWORK - LANDBAY N



November 16, 2023 | ©2023 Torti Gallas + Partners | Grimke School, 1923 Vermont Ave NW, 2nd Floor | Washington, DC 20001 | 301.588.4800



HYBRID



RIVERHOUSE NEIGHBORHOOD