

Arlington County's Notable Trees 2023



ARLINGTON
VIRGINIA

Parks & Recreation

Since 1987, Arlington County has recognized its most notable trees

This volunteer-led program has recognized over 398 Trees

Owners are recognized with a certificate or plaque

While these trees are not legally protected, notable tree status has often helped communicate the value of these trees in development projects, and led to increased conservation of our most prized natural resource



1988 Notable tree awardees



1989 Notable tree – 619 S Taylor St

2023 Notable Trees

36 tree submissions were reviewed by Tree Stewards John Wingard and Jan Hull, and 26 of those nominations were approved by the Forestry and Natural Resources Commission.

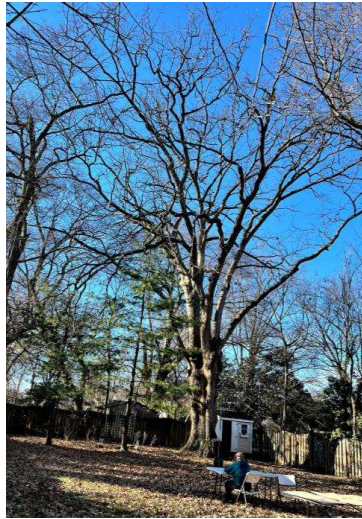
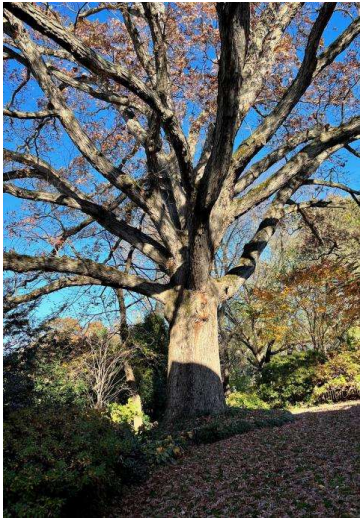
The following are highlights of this year's nominations, followed by pictures of all the notable trees

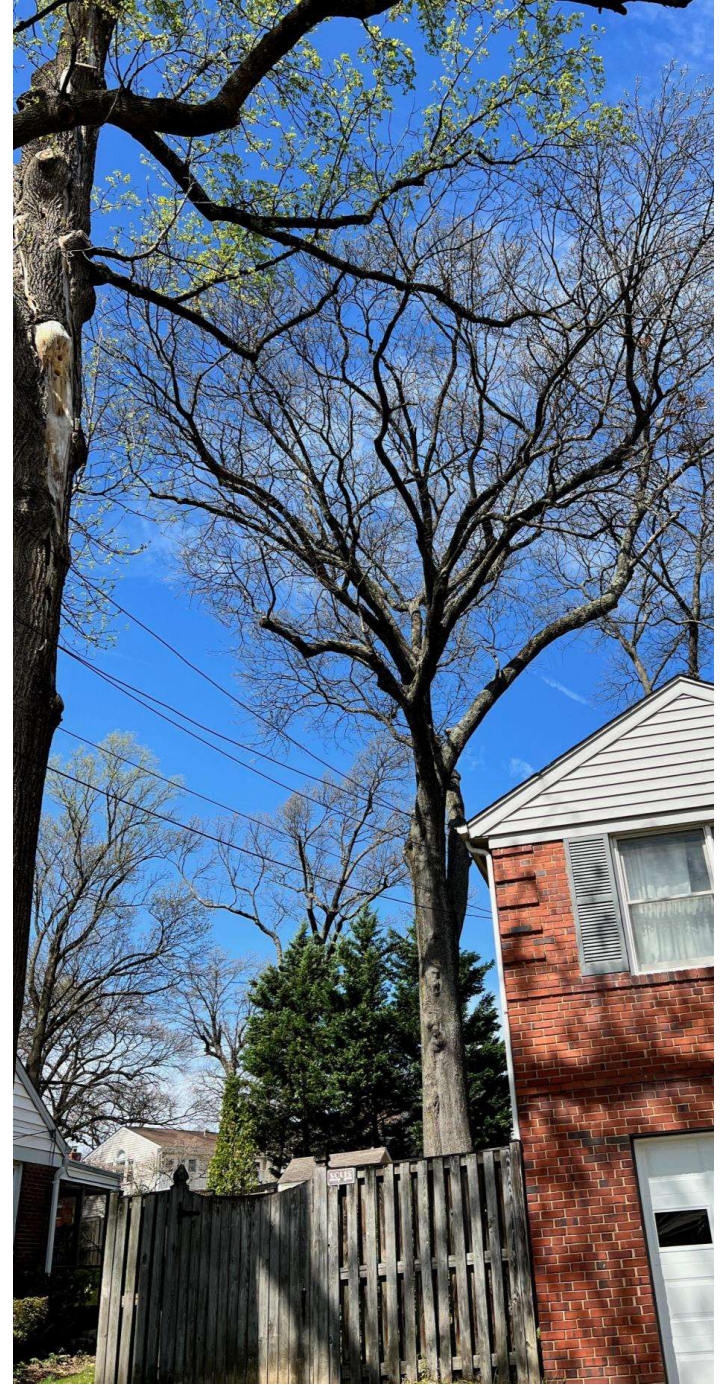


- **Highlight: Dawn redwood in Glencarlyn.**
- **Planted in the early 1960s in front of the then-new home of John and Mary Benn**
- **Dawn redwoods brought back from California by horticulturalist Richard Van Dersal**
- **Richard van Dersal shared his knowledge, as well as trees and shrubs with them**

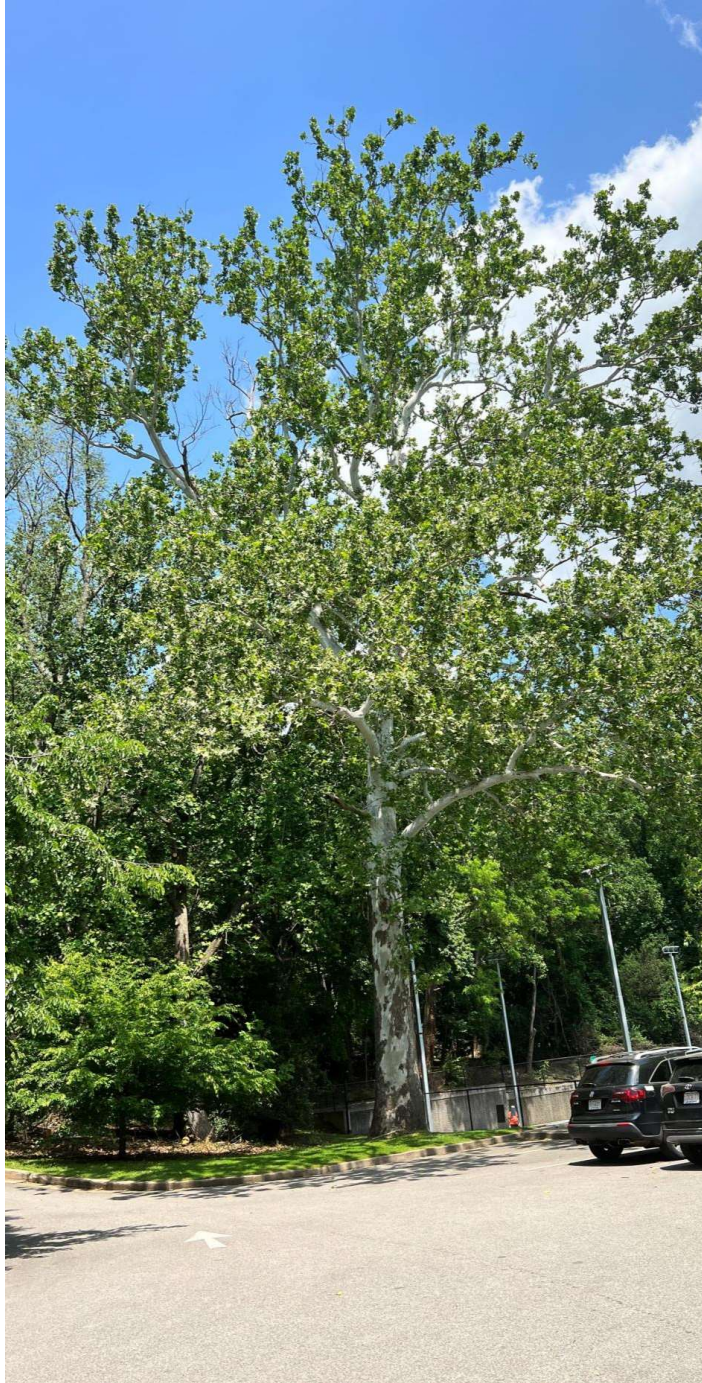
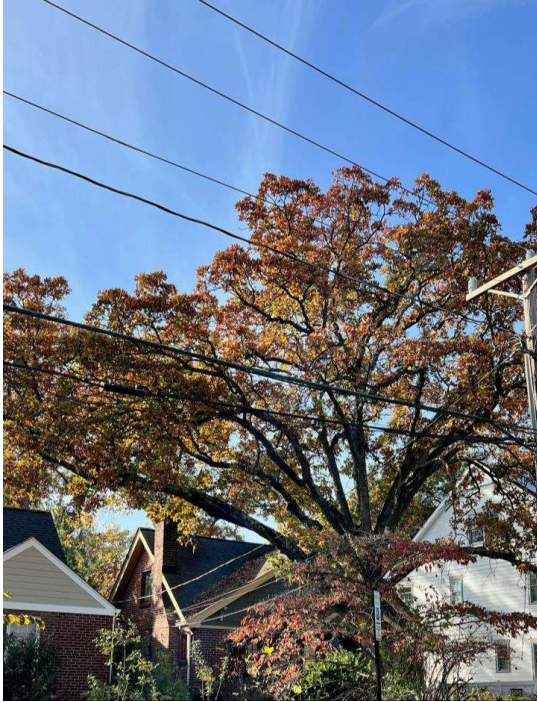


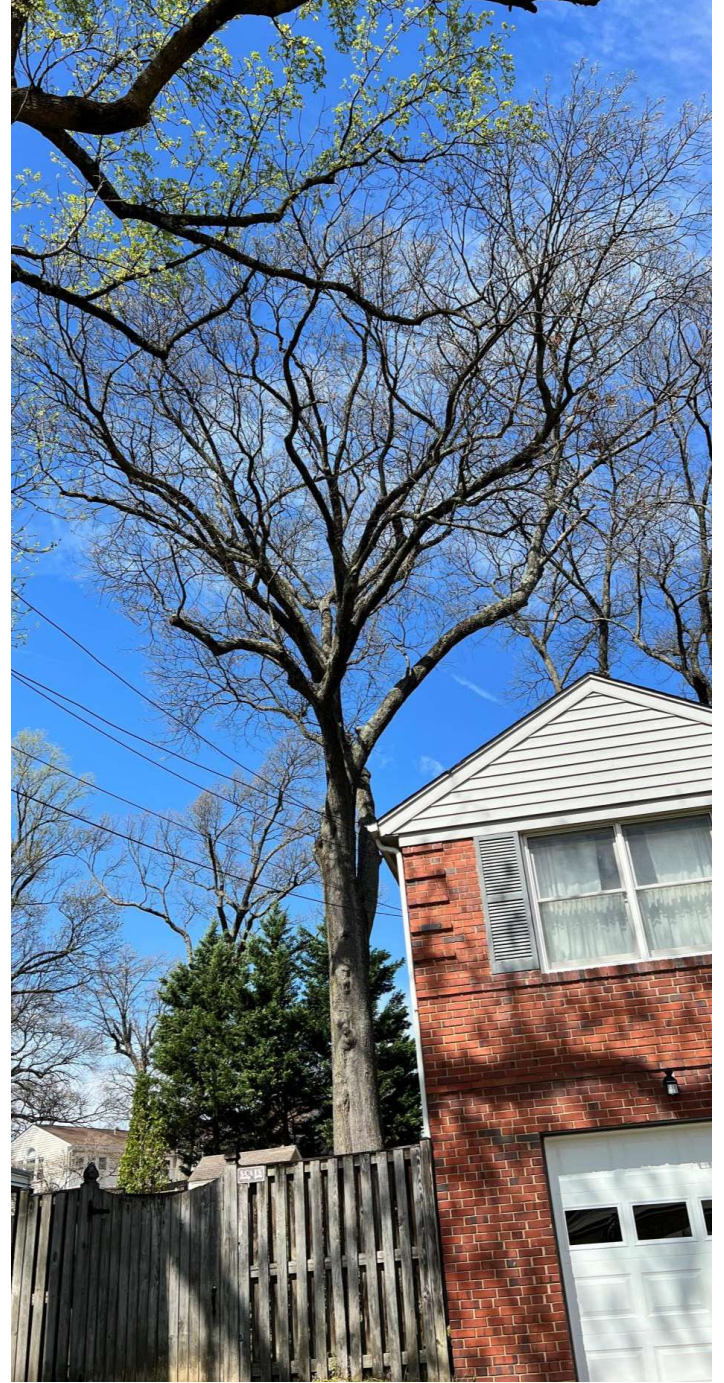
- **Highlight: A champion bur oak on the George Washington Memorial Parkway**





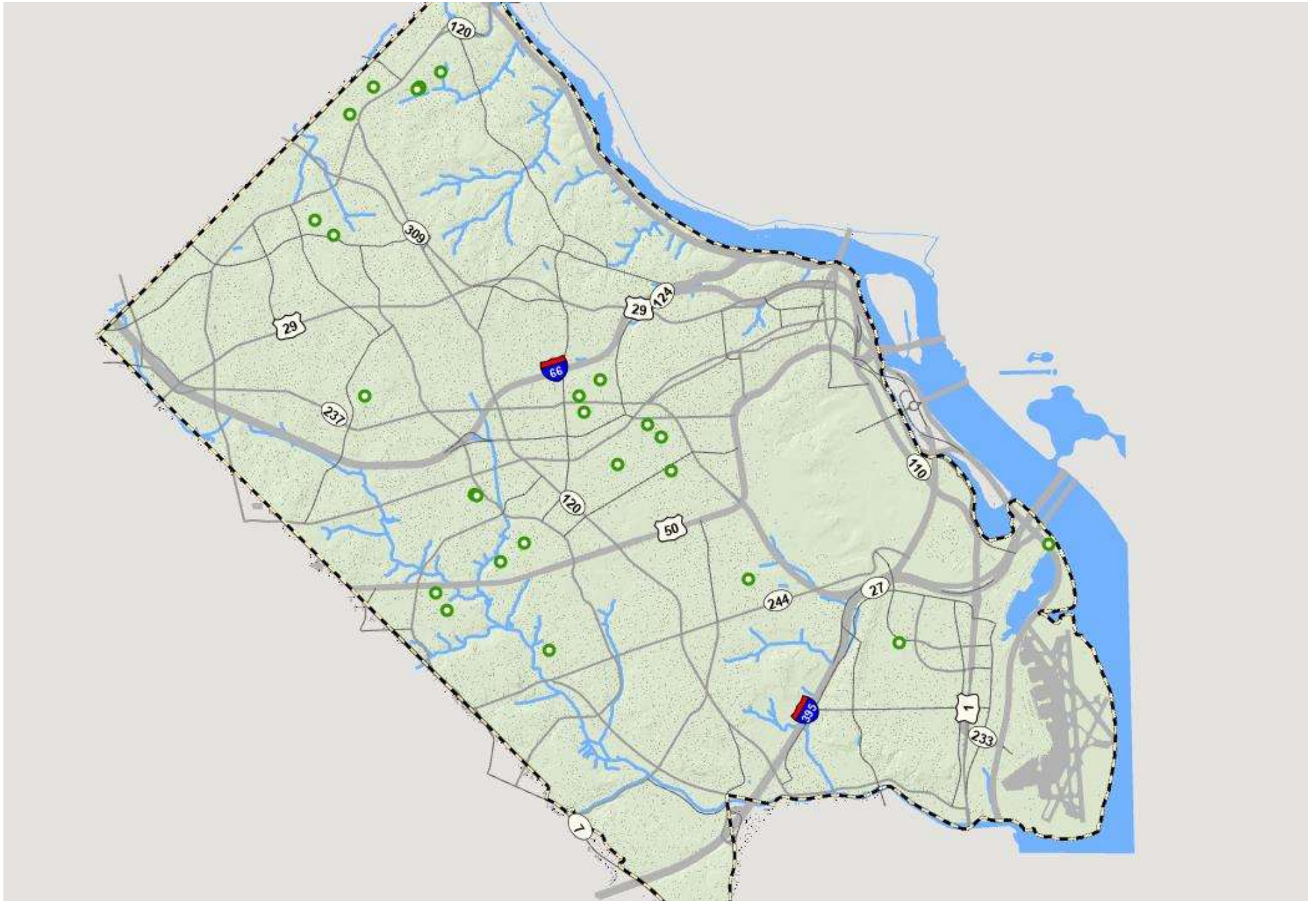








Map of 2023 notable trees



Congratulations 2023 winners!

