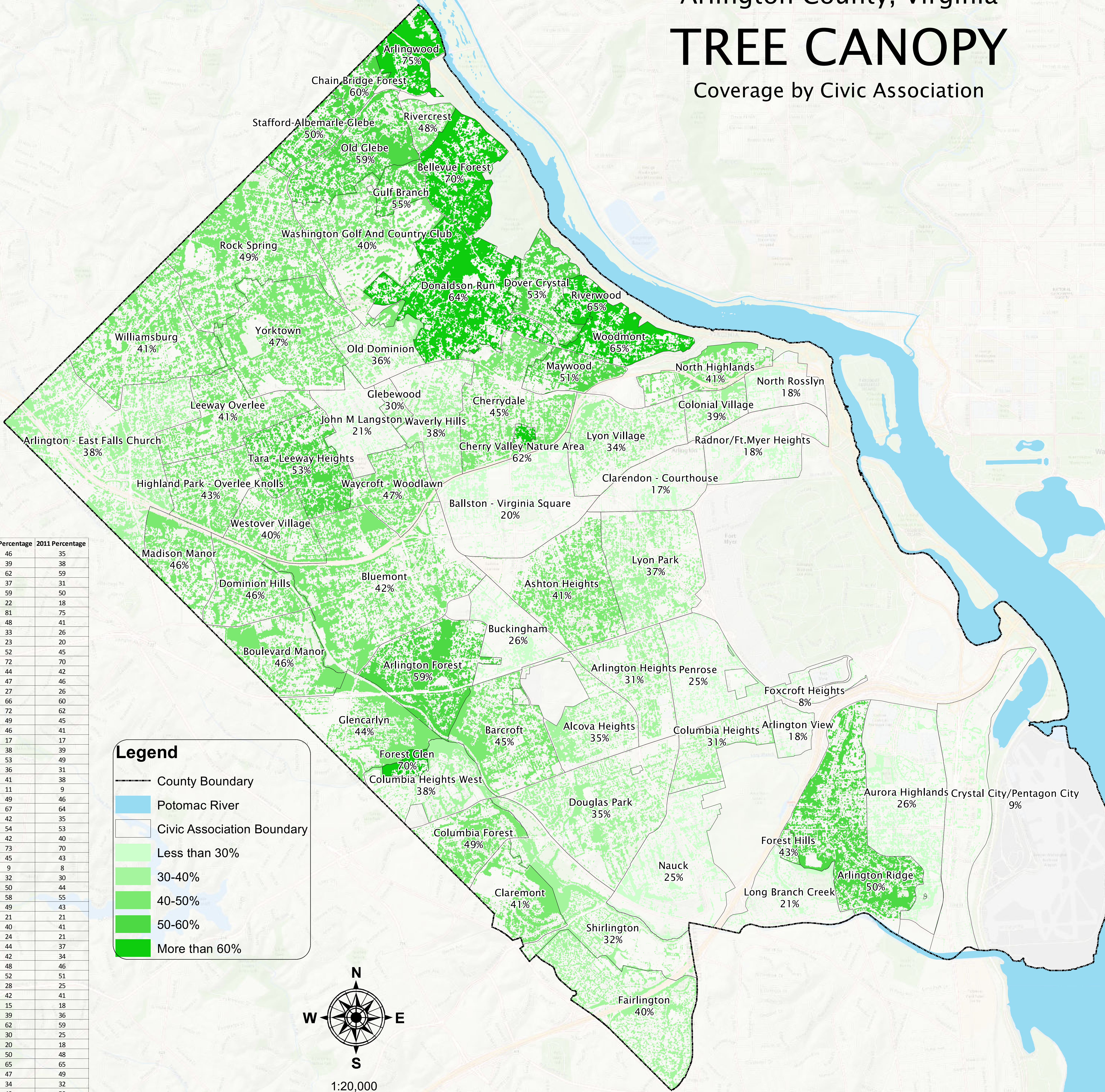


Arlington County, Virginia

TREE CANOPY

Coverage by Civic Association



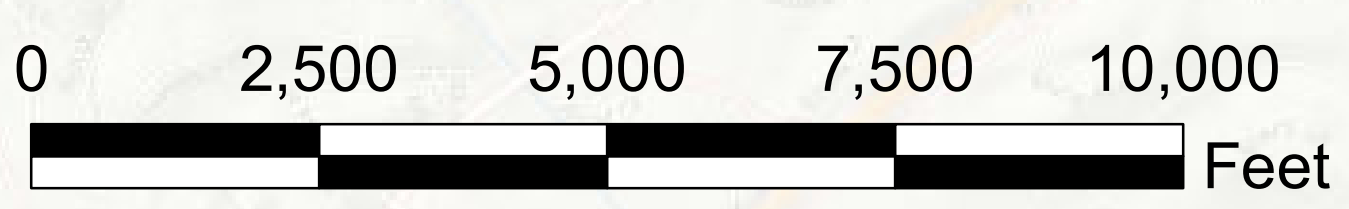
Civic Association	2008 Percentage	2011 Percentage
Alcova Heights	46	35
Arlington - East Falls Church	39	38
Arlington Forest	62	59
Arlington Heights	37	31
Arlington Ridge	59	50
Arlington View	22	18
Arlingwood	81	75
Ashton Heights	48	41
Aurora Highlands	33	26
Ballston - Virginia Square	23	20
Barcroft	52	45
Bellevue Forest	72	70
Bluemont	44	42
Boulevard Manor	47	46
Buckingham	27	26
Chain Bridge Forest	66	60
Cherry Valley Nature Area	72	62
Cherrydale	49	45
Clarendon	46	41
Clarendon - Courthouse	17	17
Colonial Village	38	39
Columbia Forest	53	49
Columbia Heights	36	31
Columbia Heights West	41	38
Crystal City/Pentagon City	11	9
Dominion Hills	49	46
Donaldson Run	67	64
Douglas Park	42	35
Dover Crystal	54	53
Fairlington	42	40
Forest Glen	73	70
Forest Hills	45	43
Foxcroft Heights	9	8
Glebe Wood	32	30
Glencarlyn	50	44
Gulf Branch	58	55
Highland Park - Overlee Knolls	49	43
John M Langston Waverly Hills	21	21
Leeway Overlee	40	41
Long Branch Creek	24	21
Lyon Park	44	37
Lyon Village	42	34
Madison Manor	48	46
Maywood	52	51
Nauck	28	25
North Highlands	42	41
North Rosslyn	15	18
Old Dominion	39	36
Old Glebe	62	59
Penrose	30	25
Radnor/Ft. Myer Heights	20	18
Rivercrest	50	48
Riverwood	65	65
Rock Spring	47	49
Shirlington	34	32
Stafford-Albemarle-Glebe	49	50
Tara - Leeway Heights	52	53
Washington Golf And Country C	47	40
Waverly Hills	40	38
Waycroft - Woodlawn	53	47
Westover Village	38	40
Williamsburg	42	41
Woodmont	68	65
Yorktown	45	47

Legend

- County Boundary
- Potomac River
- Civic Association Boundary
- Less than 30%
- 30-40%
- 40-50%
- 50-60%
- More than 60%



1:20,000



Overall Tree Canopy Coverage is 40% for the County, Excluding Federal properties and National Airport.

Tree Canopy data provided by the University of Vermont with funds from Casey Trees. Canopy data represents the year 2011. A prior study was performed in 2008, showing 43% Tree canopy. Approximately 0.5% error exist in this data.