



Pickleball Update

County Manager's Report
November 14, 2023



- Update – Since April 2023
 - Pickleball Striping
 - Walter Reed Community Center
 - Next steps
- Update - Walter Reed Community Center Project
 - Status
 - Engagement #2 Overview
 - Final concept
 - Next Steps





ARLINGTON
VIRGINIA

Parks & Recreation

Update – Since April 2023



UPDATE – PICKLEBALL STRIPING

- 7 existing courts were re-striped as multi-use and acoustic fence added by the end of August 2023 at 4 locations:
 - Marcey Road Park
 - Virginia Highlands Park
 - Fort Scott Park
 - Hayes Park
- By re-striping for multi-use, 14 new pickleball courts were created
- As of November 1, 2023, 511 reservations have been made for a total of 691.5 hours.



Marcey Road Park

UPDATE – PICKLEBALL STRIPING

- DPR now operates 50 pickleball courts
 - 35 multi-use courts
 - 15 indoor courts (*at designated times*)



Legend

- ☆ DPR Outdoor Pickleball Courts
- DPR Indoor Pickleball Courts



UPDATE – WALTER REED COMMUNITY CENTER (NON-PROJECT RELATED)

- In addition to two other previous adjustments of hours of play, new hours of play on the courts were set to match the hours of operation of the community center

Sundays	1:00 p.m. – 7:00 p.m.
Mondays - Fridays	8:00 a.m. – 9:00 p.m.
Saturdays	8:00 a.m. – 5:00 p.m.
Holidays	8:00 a.m. – 5:00 p.m. <i>(except Thanksgiving, Christmas, and New Years Day)</i>

- Temporary acoustic fencing was added to existing fencing at the multi-use courts
- DPR tested the effectiveness of acoustic fencing as a sound mitigation measure



WALTER REED PARK PICKLEBALL NOISE READINGS

NOISE SURVEY WAS CONDUCTED TO ASSESS THE SOUND MITIGATION RESULTS OF A 10 FT 'ACOUSTIFENCE' AROUND 3 SIDES OF THE PICKLEBALL COURTS.

THE DATA SHOWS THE SOUND LEVEL VALUES BEFORE (B) AND AFTER (A) THE ACOUSTIFENCE WAS INSTALLED.

THE BEFORE READINGS WERE TAKEN ON APRIL 20, 2023. THE AFTER READINGS ON OCTOBER 12, 2023

LEGEND
 B L Aeq/L AImax
 A L Aeq/L AImax
 L Aeq - weighted average
 L AImax - weighted impulse max level
 ~~~~~ Acoustifence

# UPDATE – NEXT STEPS

- DPR intends to work with users on how the courts function, specifically on providing dedicated drop-in play at multi-use courts
- In 2024 DPR will begin the 5-year update to the 2019 Public Spaces Master Plan which will include an update to Level of Service for recreational amenities.
  - Pickleball will be included in the updated Level of Service

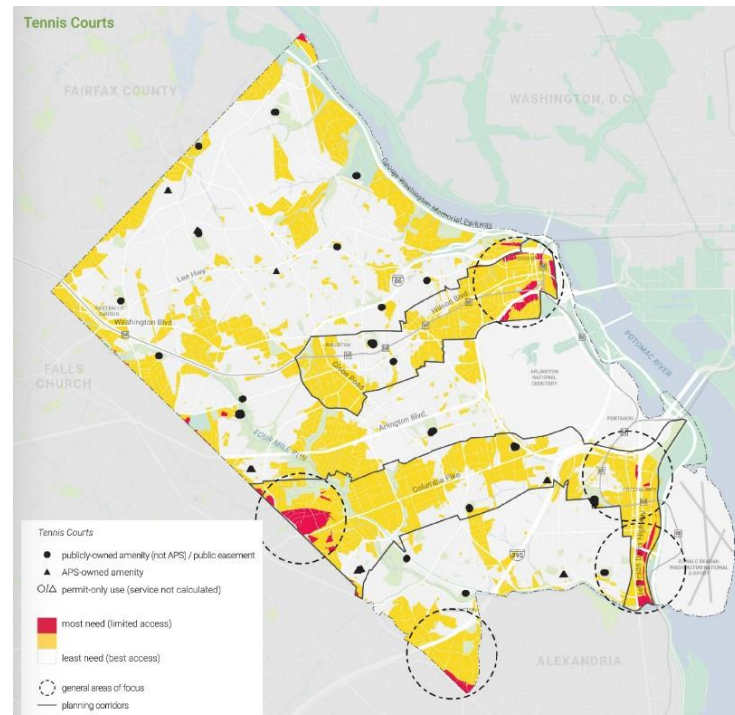


Figure 28. Estimated future LOS targets.

| Amenity                     | Recommended LOS | Estimated Incremental Units |              |              | Long term future needs | High Density Areas | Low Density Areas |
|-----------------------------|-----------------|-----------------------------|--------------|--------------|------------------------|--------------------|-------------------|
|                             |                 | 2016 (~222K)                | 2025 (~245K) | 2035 (~266K) |                        |                    |                   |
| Basketball Courts           | 1/3,000         | –                           | –            | 2            | ↑                      | 5 min              | 10 min            |
| Casual Use Spaces           |                 |                             |              |              |                        |                    |                   |
| Community Gardens           | 1/30,000        | 1                           | 1            | –            | ↑                      | 5 min              | 10 min            |
| Diamond Fields              | 1/6,000         | –                           | –            | 2            | ↑                      | 10 min             | 20 min            |
| Multi-Use Trails            | 1/3,300         | 19                          | 7            | 7            | ↑                      | 5 min              | 10 min            |
| Off-Leash Dog Parks         | 1/25,000        | 1                           | 1            | 1            | ↑                      | 5 min              | 10 min            |
| Picnic Areas                | 1/5,000         | –                           | 4            | 5            | ↑                      | 10 min             | 20 min            |
| Playgrounds                 | 1/3,000         | –                           | –            | –            | ↔                      | 5 min              | 10 min            |
| Rectangular Fields          | 1/4,200         | –                           | 6            | 5            | ↑                      | 10 min             | 20 min            |
| Tennis Courts               | 1/3,000         | –                           | –            | –            | ↔                      | 10 min             | 20 min            |
| Volleyball Courts           | 1/20,000        | 2                           | 1            | 1            | ↑                      | 10 min             | 20 min            |
| Comm., Rec., Sports Centers | 1/0.57          | –                           | 39,698       | 37,445       | ↑                      |                    |                   |
| Hiking Trails               | 1/10,000        | 8                           | 2            | 3            | ↑                      |                    |                   |
| Indoor and Outdoor Pools    | 1/40,000        | 2                           | 1            | –            | ↑                      |                    |                   |
| Natural Lands               | 1/175           | 140                         | 132          | 123          | ↑                      |                    |                   |
| Nature Centers              | 1/75,000        | –                           | 1            | –            | ↑                      |                    |                   |
| Outdoor Tracks              | 1/45,000        | 2                           | 1            | –            | ↑                      |                    |                   |
| Skate Parks                 | 1/120,000       | 1                           | 1            | –            | ↑                      |                    |                   |
| Small Game Courts           | 1/8,000         | 14                          | 3            | 3            | ↑                      |                    |                   |
| Spraygrounds                | 1/45,000        | –                           | 1            | –            | ↑                      |                    |                   |

Access standards do not apply



**ARLINGTON**  
**VIRGINIA**  

---

**Parks & Recreation**

# Update – Walter Reed Community Center Project

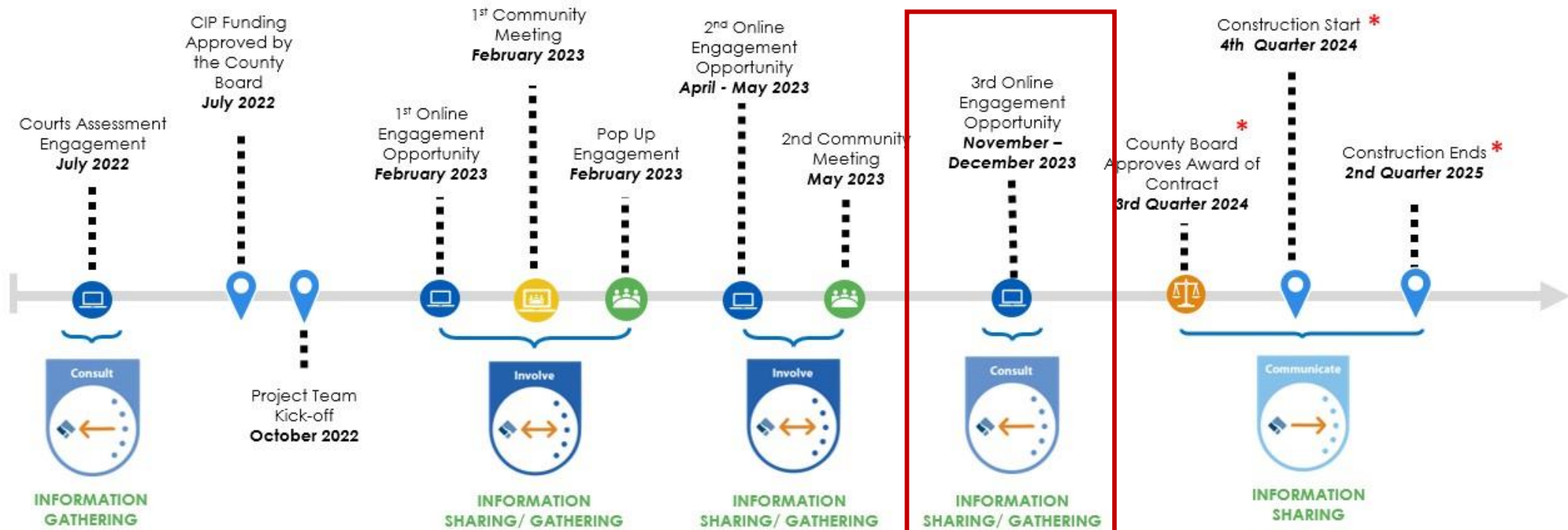




# WALTER REED COMMUNITY CENTER - STATUS

## Walter Reed Outdoor Pickleball Court Project

**Origin:** Public Spaces Master Plan – Action Step 1.4.3 And Courts Assessment  
**Funding:** FY 23-32 Capital Improvement Plan  
**Staff Contact:** Bernadette Grullon (Bgrullon@arlingtonva.us)



\* Subject to adjustments as necessary



**Online Feedback**  
(e.g., questionnaire, feedback form, etc.)



**In-Person Engagement and Pop-Ups**  
(e.g., community meeting, roundtable, tabling, walking/bus tour, deliberative dialogue, etc.)



**Virtual Meeting**  
(e.g., TEAMS, TEAMS live, Zoom, etc.)



**County Board Engagement**  
(e.g., public hearing, Board work session, open door Monday, commission meeting, etc.)



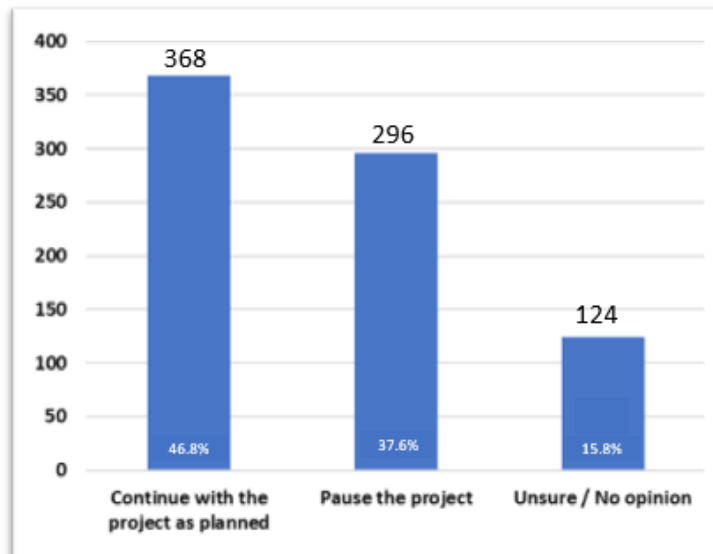
**Key Milestone**

# WALTER REED COMMUNITY CENTER -ENGAGEMENT #2 OVERVIEW

|                                           |              |
|-------------------------------------------|--------------|
| <b>Total Participation</b>                | <b>1,578</b> |
| Open House: May 23, 2023                  | 175          |
| Online Engagement: May 25 – June 22, 2023 | 1,403        |

1,075  
within a  
10 mi.  
boundary

## Responses to project pause question (participants within a 10 mi. boundary)



| Top Themes for Concept 1                                                                                                                                                                                                            |                                                                                                                             | Top Themes for Concept 2                                                                                                                                                                                                  |  |
|-------------------------------------------------------------------------------------------------------------------------------------------------------------------------------------------------------------------------------------|-----------------------------------------------------------------------------------------------------------------------------|---------------------------------------------------------------------------------------------------------------------------------------------------------------------------------------------------------------------------|--|
| <ul style="list-style-type: none"> <li>Not enough courts</li> <li>Keep pickleball on basketball courts</li> <li>Move the project elsewhere</li> <li>Don't like the project</li> <li>Keep tennis on the pickleball courts</li> </ul> |                                                                                                                             | <ul style="list-style-type: none"> <li>Not enough courts</li> <li>Separated courts are not preferred</li> <li>Keep pickleball on basketball courts</li> <li>Looks good/ like it</li> <li>More sound mitigation</li> </ul> |  |
| Other considerations from additional comments and open house                                                                                                                                                                        |                                                                                                                             |                                                                                                                                                                                                                           |  |
| <ul style="list-style-type: none"> <li>More parking</li> <li>More landscaping</li> <li>Preserve greenspace</li> </ul>                                                                                                               | <ul style="list-style-type: none"> <li>Higher acoustic fencing</li> <li>Permanent restroom</li> <li>Waiting area</li> </ul> | <ul style="list-style-type: none"> <li>More shade</li> <li>More seating</li> <li>Bigger paddle rack</li> </ul>                                                                                                            |  |

# WALTER REED COMMUNITY CENTER - STATUS

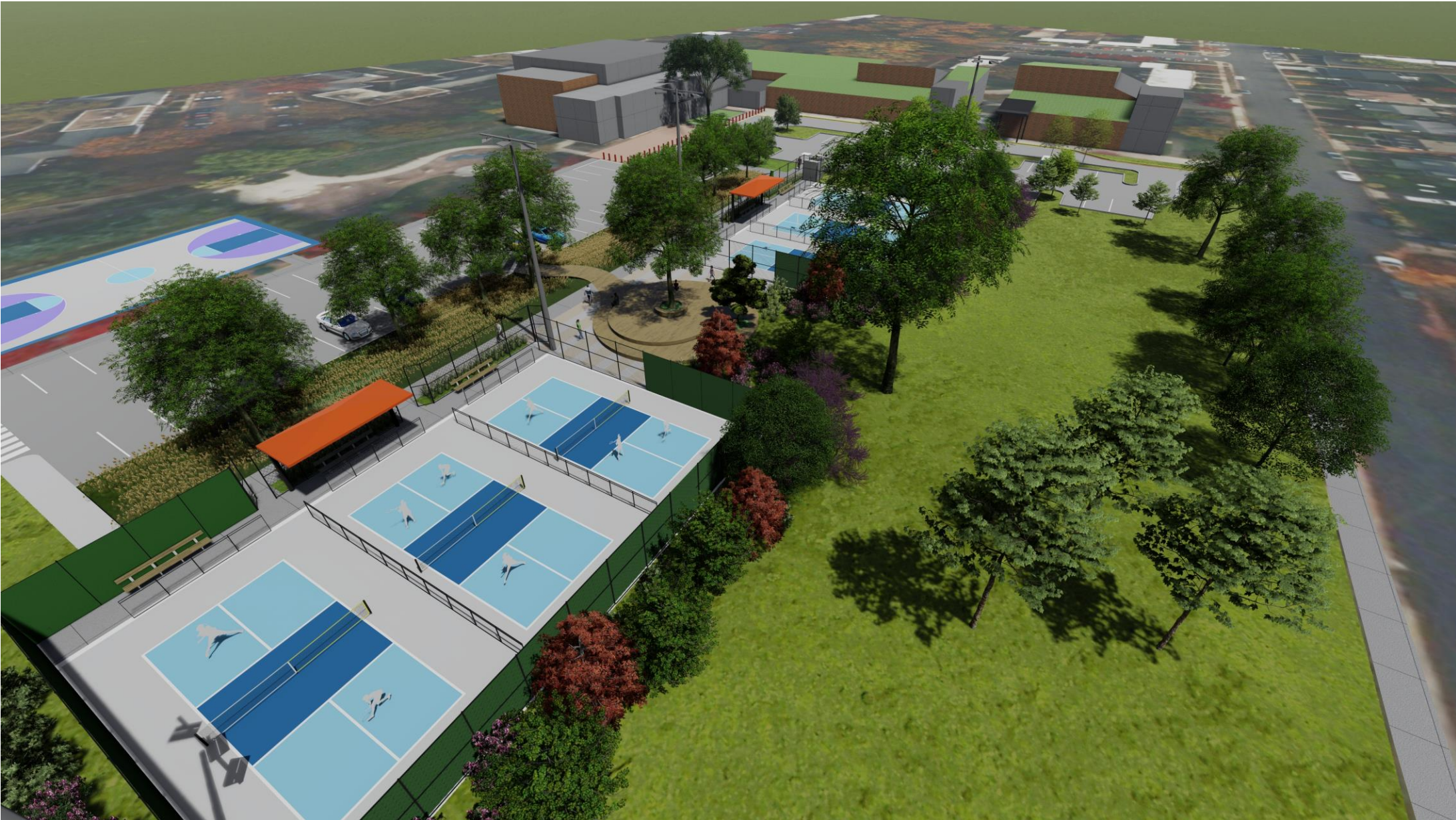
- Continue with project:
  - Physical & mental health benefits
  - Aging facilities



# WALTER REED COMMUNITY CENTER – FINAL CONCEPT



# FINAL DRAFT CONCEPT – FINAL CONCEPT



# WALTER REED COMMUNITY CENTER – FINAL CONCEPT



# WALTER REED COMMUNITY CENTER - NEXT STEPS

- **November 6:** Summary of 2<sup>nd</sup> engagement posted
- **November 15- December 8:** 3<sup>rd</sup> online engagement
- **3<sup>rd</sup> Quarter 2024:** County Board approves construction contract
- **4<sup>th</sup> Quarter 2024:** Construction start
- **2<sup>nd</sup> Quarter 2025:** Construction complete





# Pickleball Update

---

County Manager's Report  
November 14, 2023

