

MOSELEYARCHITECTS



ARLINGTON
VIRGINIA

ARLINGTON CULTURAL AFFAIRS

COMMUNITY PRESENTATION - SEPTEMBER 25, 2023





WELCOME

Arlington Cultural Affairs Renovation Project Overview

Co-location of Arlington County
Community Arts programs together at the
3700 S. Four Mile Run Drive location.

LETS GET STARTED



INTRODUCTIONS

Arlington County

Michael Manos – Facilities Project Specialist

Michelle Isabelle-Stark – Director Cultural Affairs/Arlington Arts

Joan Lynch – Director of Arts Enterprise & Shared Studios

Moseley Architects

Molly Merlo – Senior Associate

Ani Mencke – Project Manager

Marian Reed – Interior Designer

PRESENTATION OVERVIEW

01

HISTORY

Why relocate the art
Studios

02

PROJECT OVERVIEW

3700 S. Four Mile Run Dr.

03

STUDIO LAYOUTS

Overview of the studio
layouts and design

04

Q & A

Final remarks and
Questions

BACKGROUND - HISTORY TIMELINE

March 2020 – COVID19 Pandemic building closure

- LAC Studios budgeted through FY 21 only
- LCC building is at the end of its useful life

June 2021

Survey conducted of LAC members to determine most important attributes for the shared studios.

- Equipment
- Location
- Social interaction

December 2021

Design concept for 3700 S Four Mile Run Drive renovations for creating shared studios conducted by DES-FDC to develop cost estimate for possible inclusion in Capital Improvement Plan (CIP).

July 2022

The Arlington County Board approved the ten-year Capital Improvement Plan (CIP) with \$4.65 million for 3700 S Four Mile Run, which includes

- Various infrastructure improvements including window and roof replacement (to include solar-ready) and replacement of the HVAC with a fully electric system.
- Consolidation and newly constructed shared studios for printmaking, ceramics, and textiles.



PROJECT OVERVIEW



LOCATION:
Arlington Cultural
Affairs Center

3700 S FOUR MILE RUN DRIVE



PROJECT SCOPE

Relocate two programs from the Lee Community Center which include a Printmaking Studio and a Ceramics Studio

+

Relocate one program from the Gunston Middle School which includes a Textile Studio.

=

New fully-equipped Art Studios with support spaces and a Display Area for community use at the Arlington Cultural Affairs Center

“

Enriching lives by creating a thriving artistic and cultural community that supports the foundation of Arlington’s sense of place..

”

EXISTING PROGRAMS IN THE CULTURAL CENTER



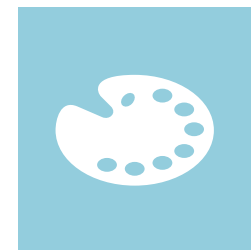
'THEATRE ON THE RUN'

An intimate 80-seat black box theatre.



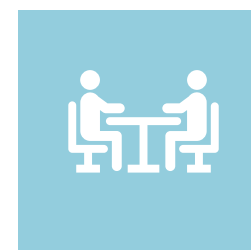
DANCE STUDIO

2 dance studios with sprung wood floors.



GALLERY 3700

Mini-gallery within two hallways with approx. 25 feet each of exhibition space

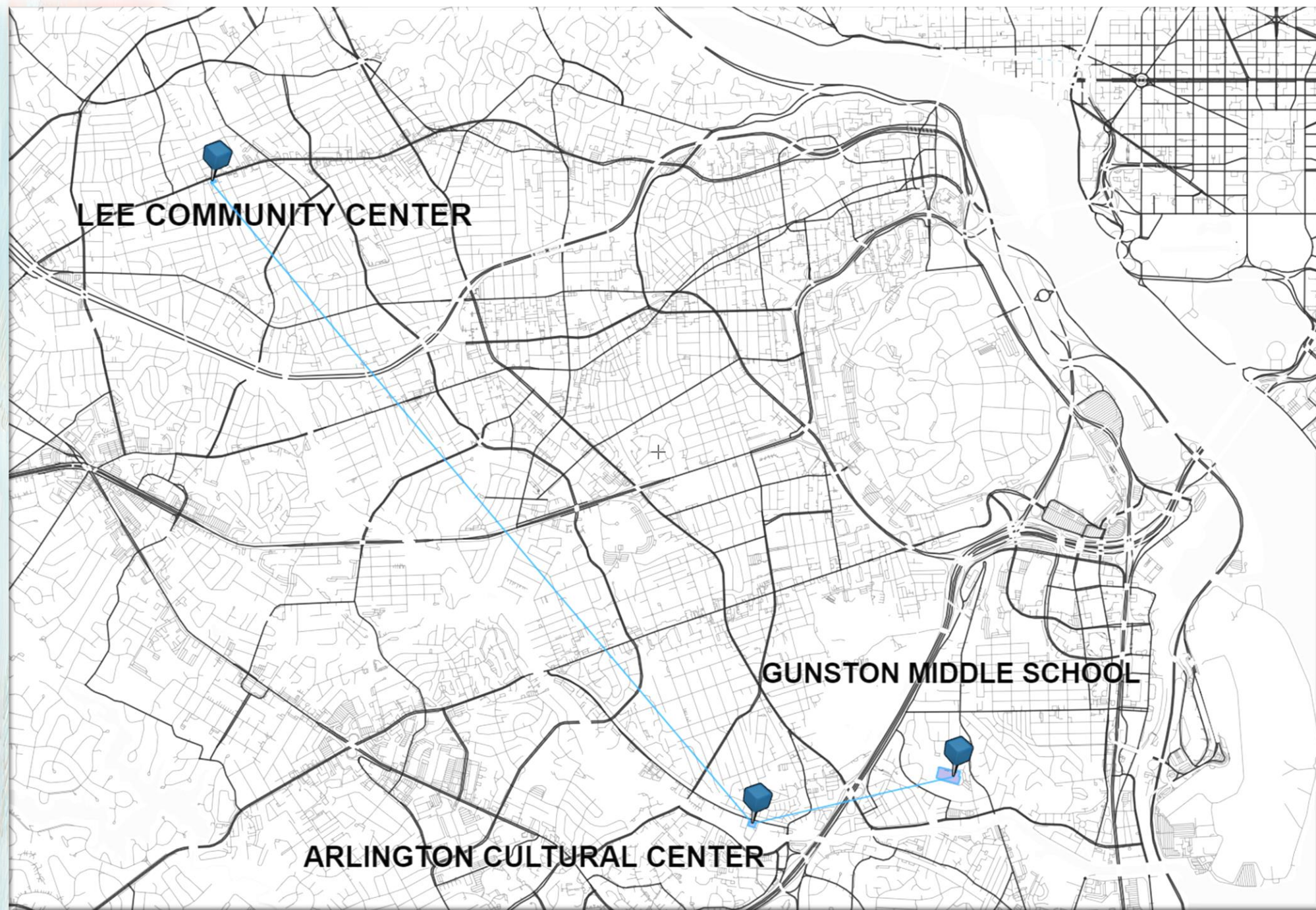


Meeting Rooms & Support Spaces

Located in various locations throughout the building for users/visitors.



RELOCATED PROGRAMS



PRINT MAKING STUDIO

Relocated **from Lee Community Center**; including the fume hood and various furniture & equipment



CERAMICS STUDIO

Relocated **from Lee Community Center**; including the electric kilns and a gas kiln, and various furniture & equipment



TEXTILES STUDIO

Relocated **from Gunston Middle School**; including various furniture & equipment



Existing Studio at Lee Community Center



Existing Studio at Gunston Middle School



Existing Space at Arlington Cultural Affairs Center

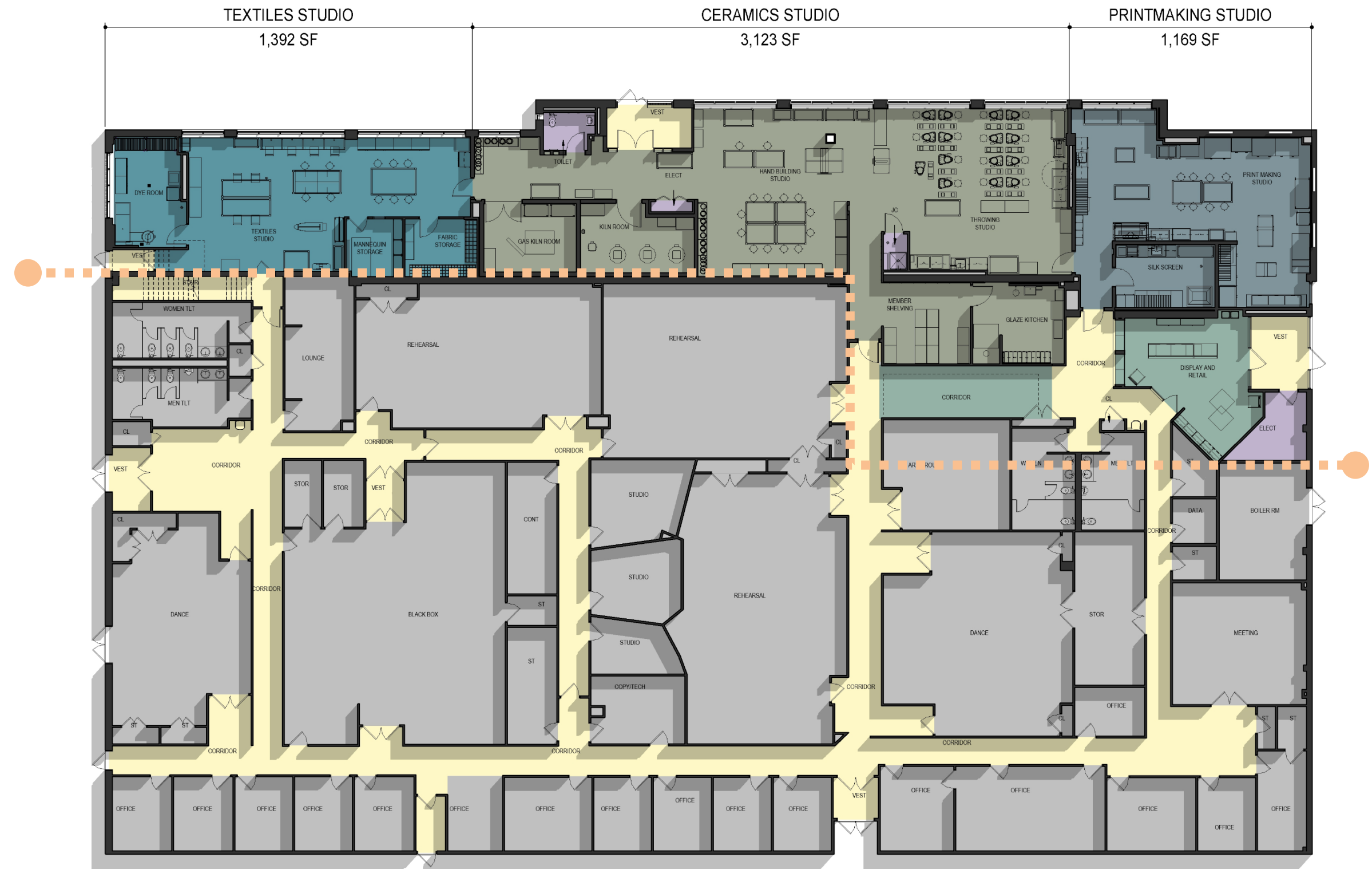
OVERVIEW OF RENOVATION

WHAT TO EXPECT:

All renovations will be constructed on the building's interior. No disruptions to local businesses or residents, traffic flow or other outside activities are expected during the renovation.

PROPOSED SCHEDULE

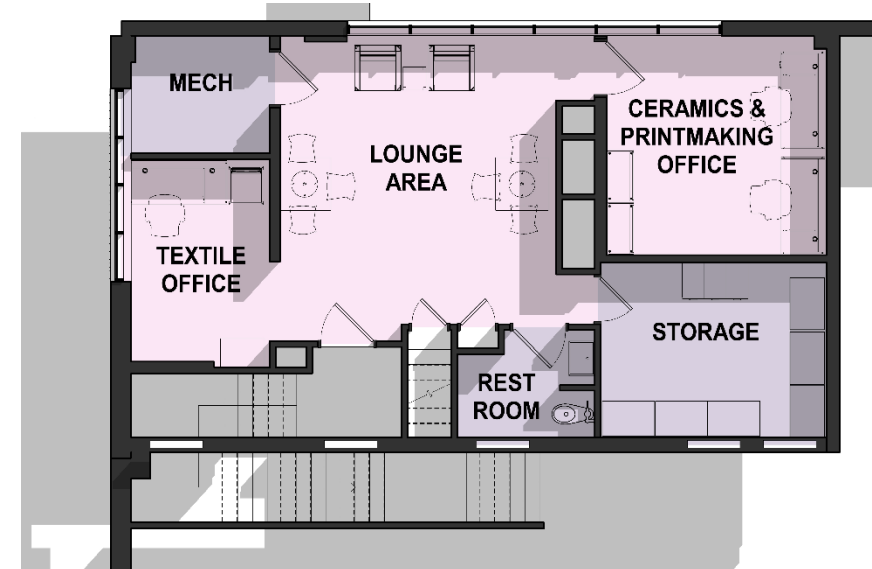
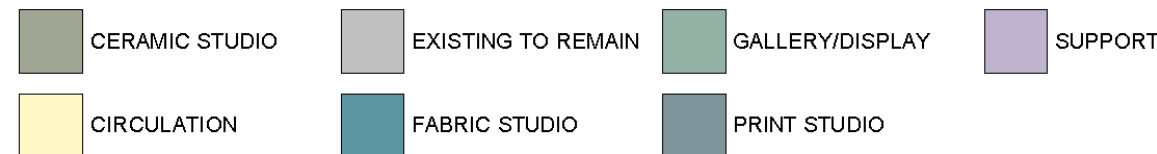
Activities	Timeline
Design phase	Fall 2023
Permit review and approval	Fall 2023
Bid phase (Selection and Board approval)	Winter 2024
Construction phase	Winter 2024 – Early 2025
Close-out phase	Early 2025
Facility opens	Spring 2025



1ST FLOOR = Approx. 7,077 SF

- Three new studios + One new display area

Department Legend



2nd FLOOR = Approx. 905 SF

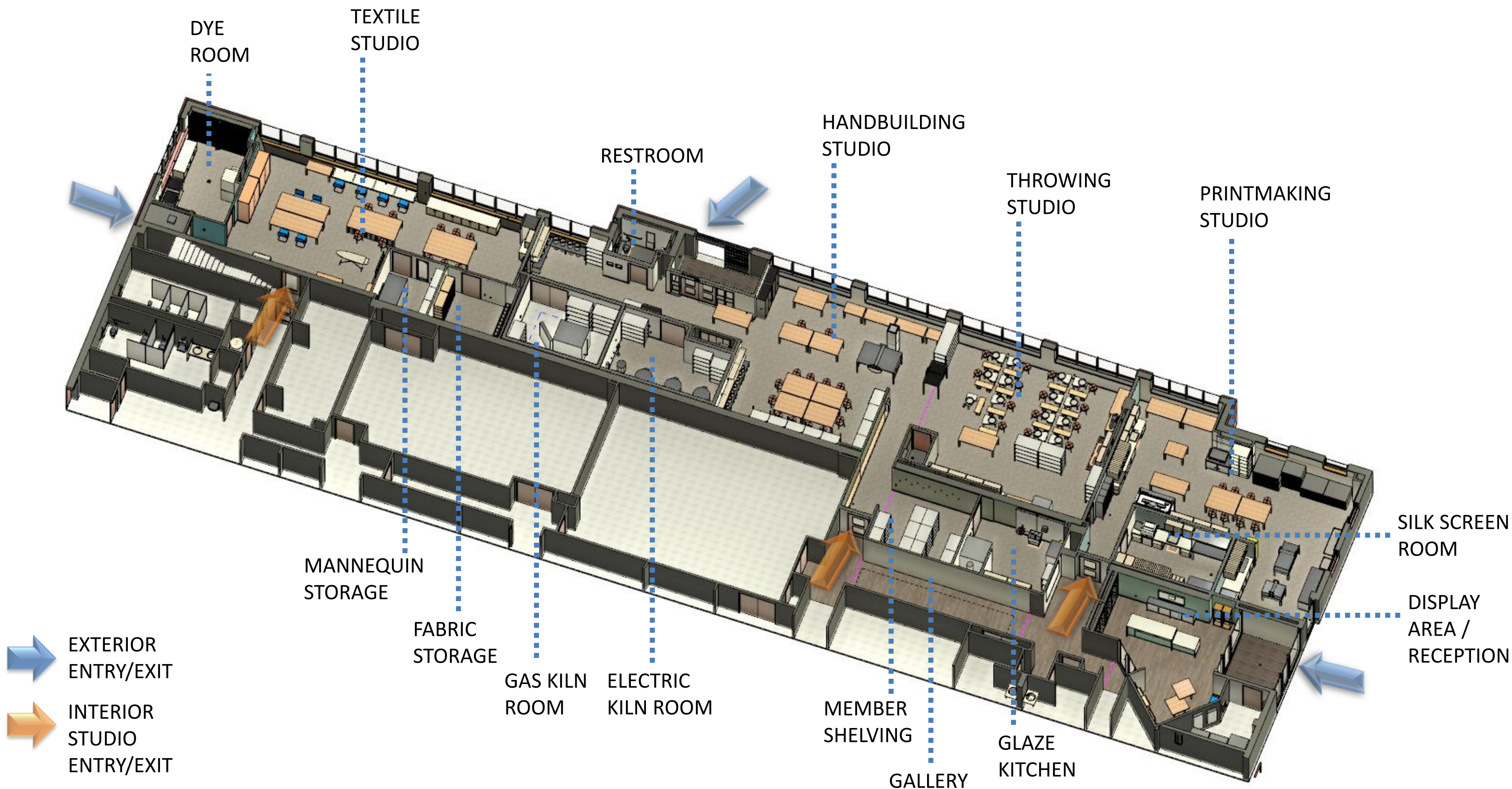
- Offices + Storage Space

Department Legend



OVERVIEW OF RENOVATION

AXON VIEW

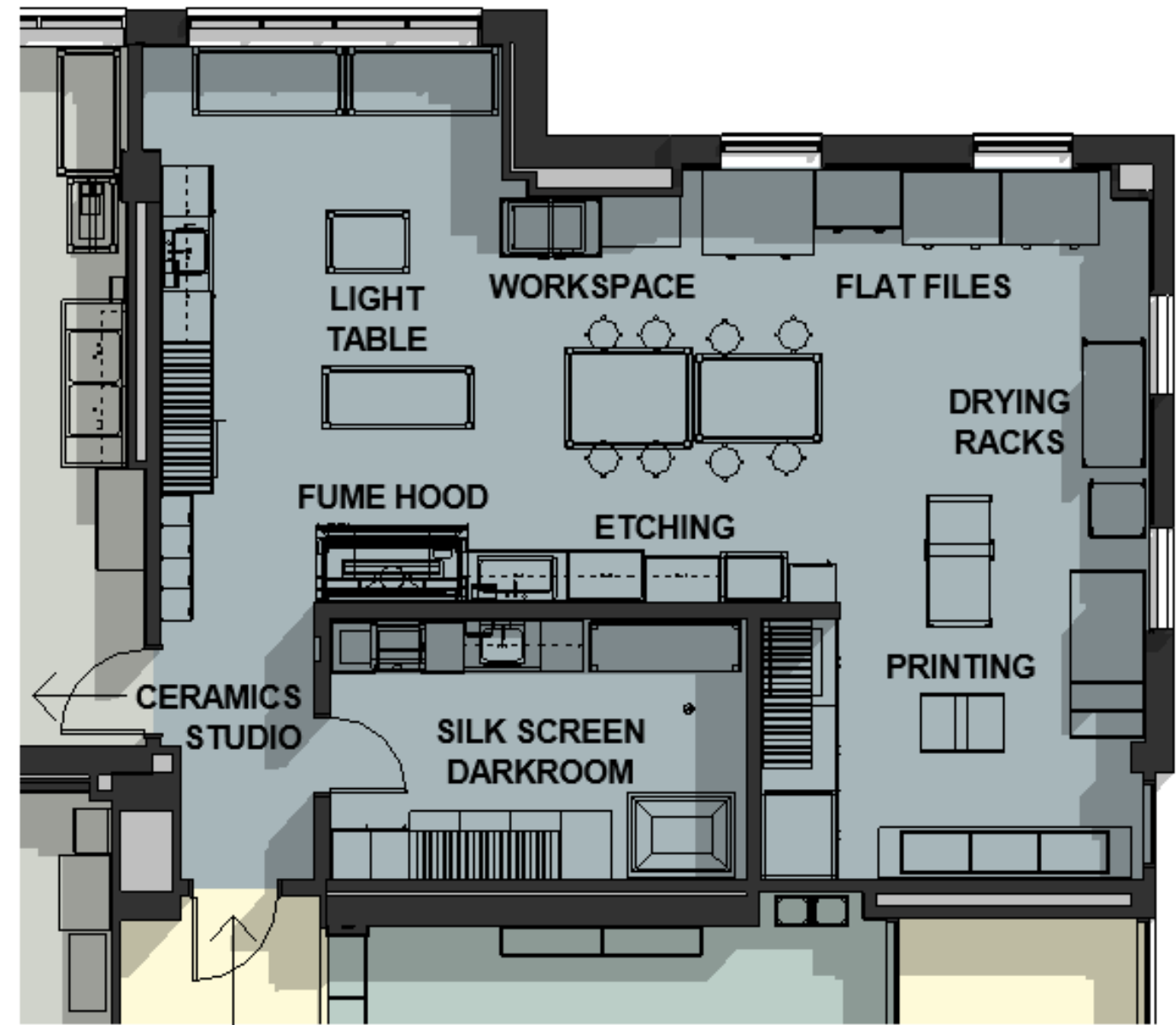
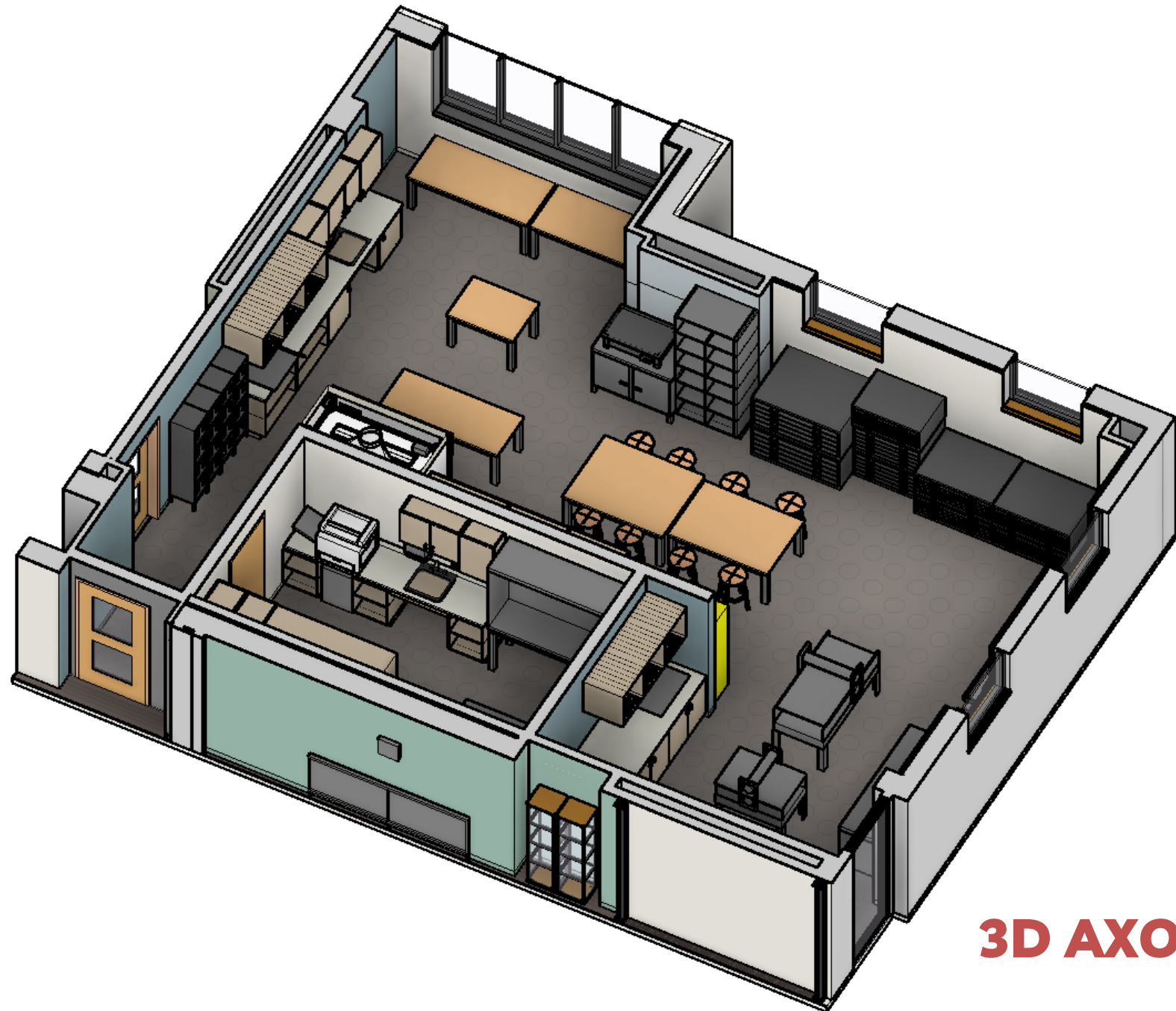


PRINTMAKING STUDIO

Approx. 1,170 SF

STUDIO SPACES/AMENITIES








- Studio Space with fume hood, flat files, drying racks, custom screen storage, and inking stations
- Dedicated Dark Room with large washout booth



PRINT MAKING STUDIO ENTRANCE

PLAN

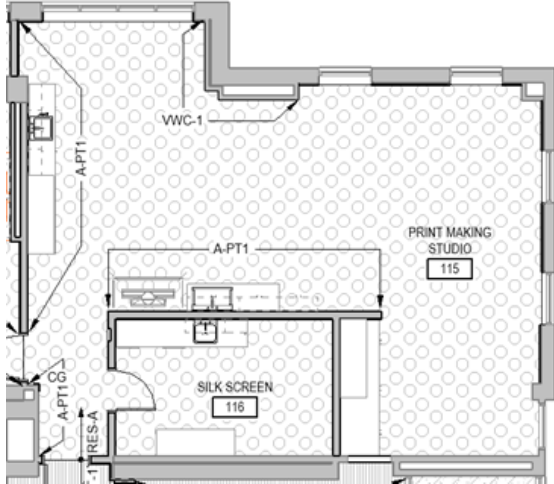
Department Legend

 CERAMIC STUDIO	 EXISTING TO REMAIN	 GALLERY/DISPLAY	 SUPPORT
 CIRCULATION	 FABRIC STUDIO	 PRINT STUDIO	

PRINTMAKING STUDIO

Approx. 1,170 SF

PLAN



FINISHES

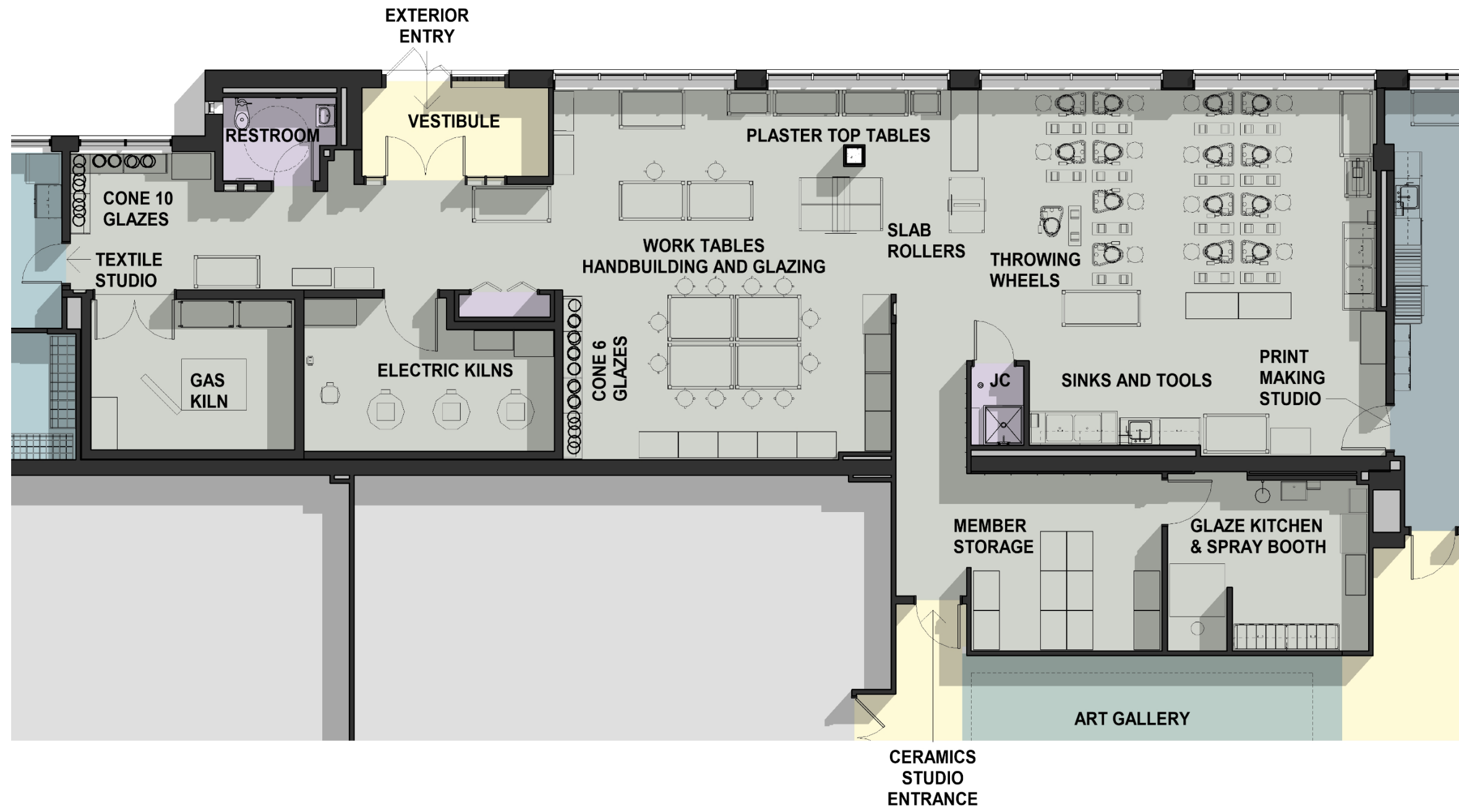


CERAMICS STUDIO

Approx. 3,169 SF

STUDIO SPACES/AMENITIES







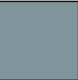
- Studio Space with glaze kitchen, member shelving area, multiple electric kilns & a gas kiln
- Throwing studio and hand building studio spaces



3D AXON

PLAN

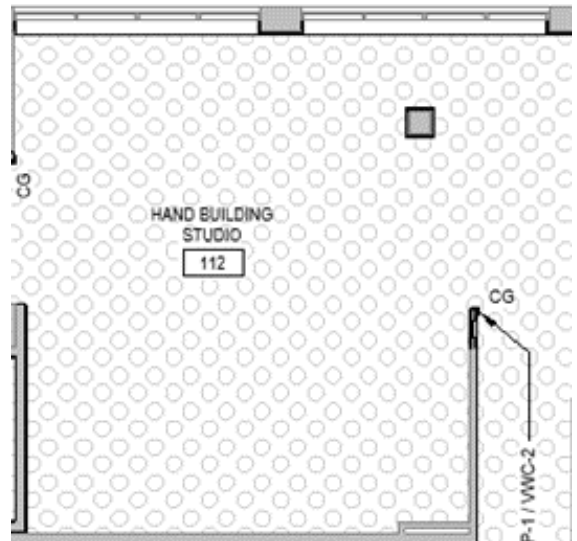
Department Legend

 CERAMIC STUDIO	 EXISTING TO REMAIN	 GALLERY/DISPLAY	 SUPPORT
 CIRCULATION	 FABRIC STUDIO	 PRINT STUDIO	

CERAMICS STUDIO

Approx. 3,169 SF

PLAN



FINISHES

GENERAL PAINT

STUDIO ACCENT

CEILING BAFFLE

LAMINATE

SOLID SURFACE

WALLCOVERING

FLOORING

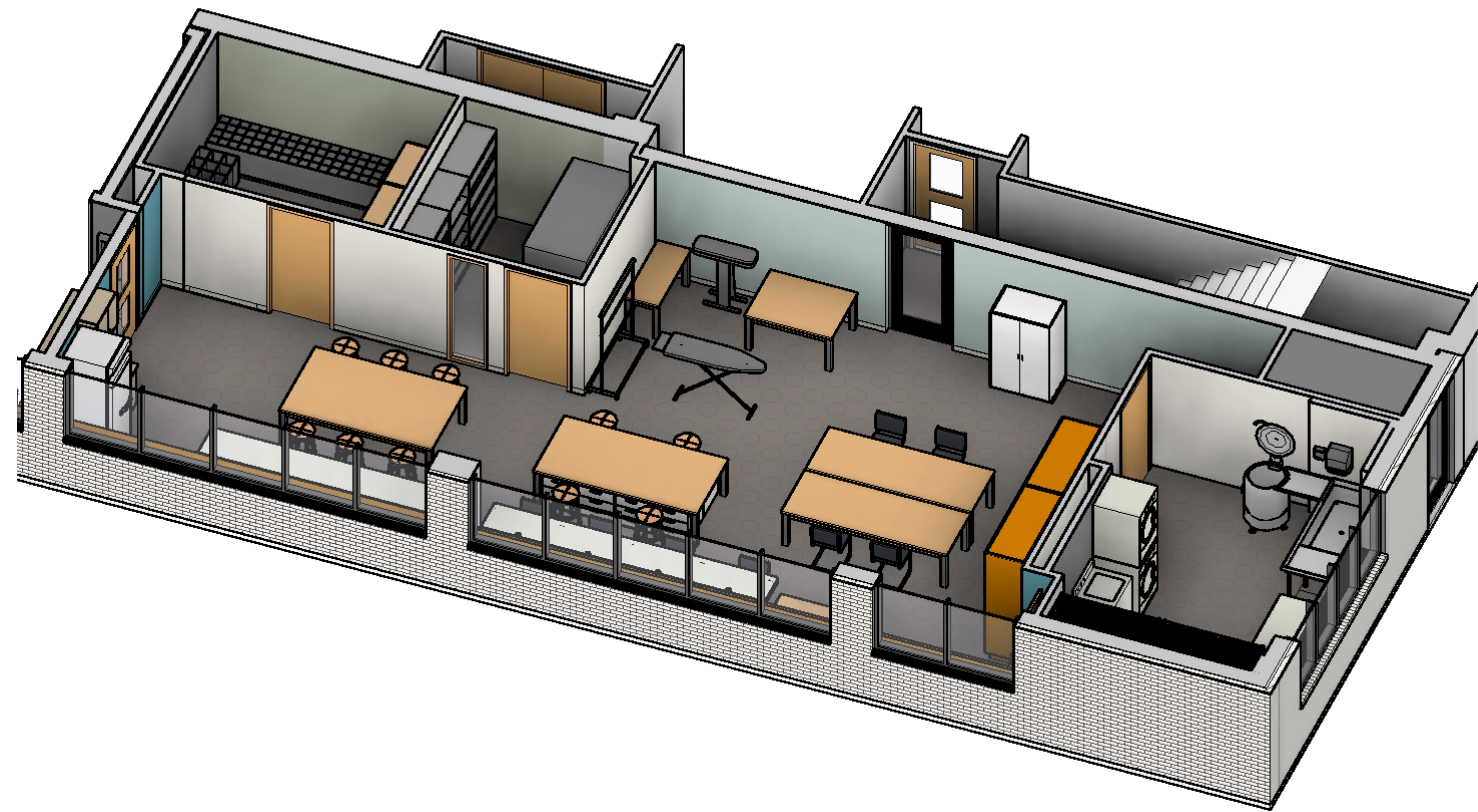


TEXTILE STUDIO

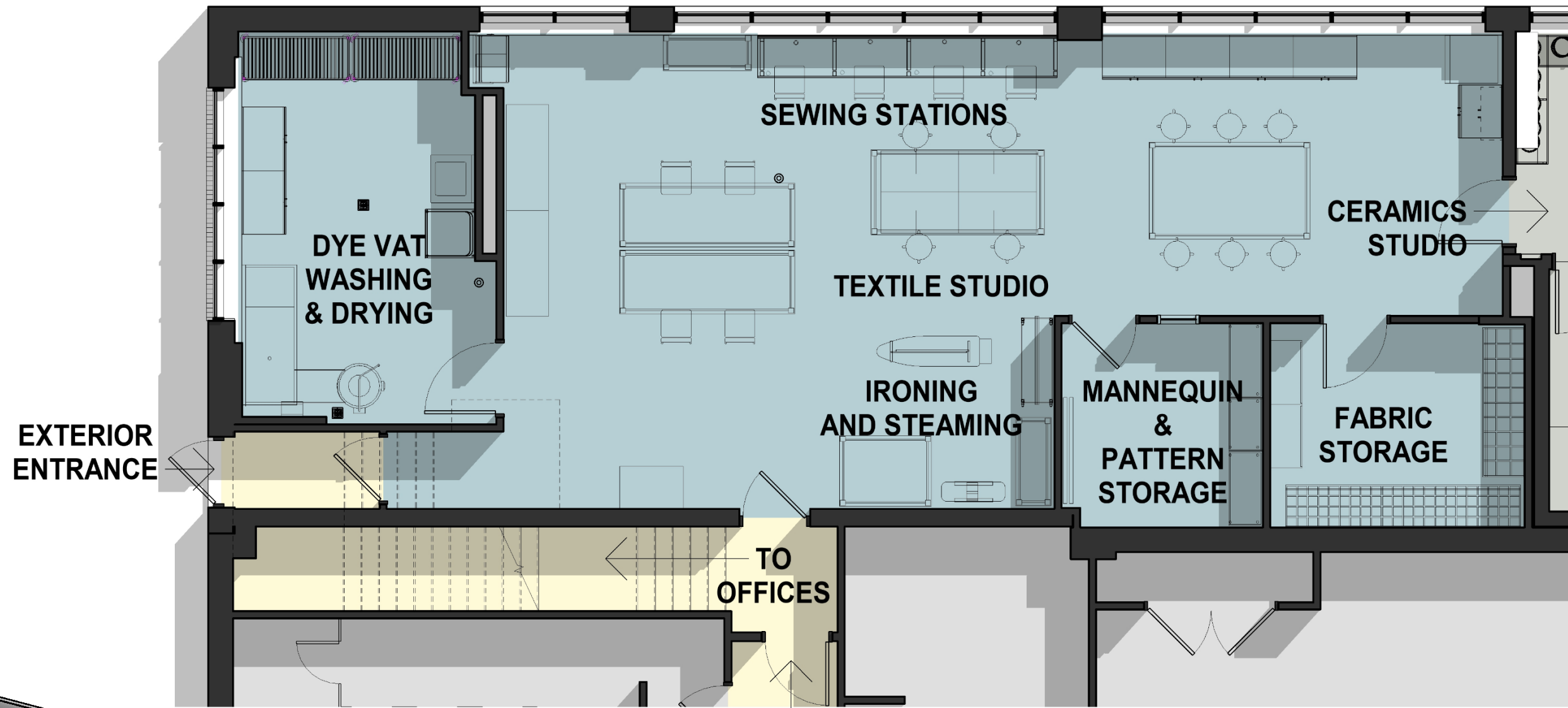
Approx. 1,392 SF

STUDIO SPACES/AMENITIES

- Studio space with multiple sewing tables, a dye vat sink, and washer and dryers
- Dedicated steam press fabric and mannequin and pattern storage rooms



3D AXON



TEXTILE STUDIO ENTRANCE

PLAN

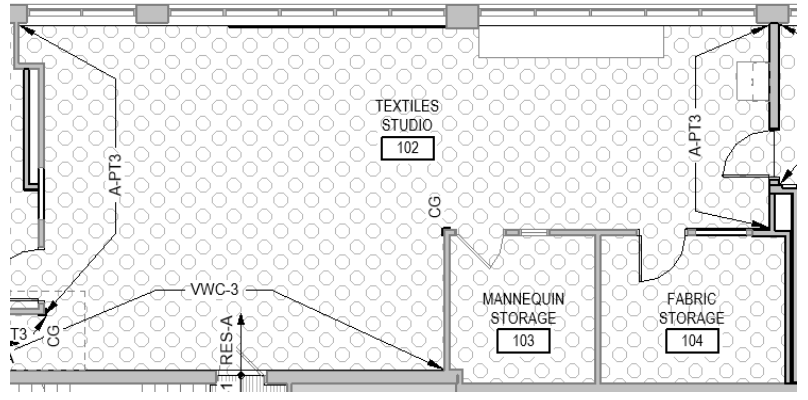
Department Legend

- | | | | |
|----------------|--------------------|-----------------|---------|
| CERAMIC STUDIO | EXISTING TO REMAIN | GALLERY/DISPLAY | SUPPORT |
| CIRCULATION | FABRIC STUDIO | PRINT STUDIO | |

TEXTILE STUDIO

Approx. 1,392 SF

PLAN



FINISHES

- GENERAL PAINT: Teal and light grey circles.
- STUDIO ACCENT: Teal circle.
- LAMINATE: Wood-grain panel.
- SOLID SURFACE: Light green speckled panel.
- WALLCOVERING: Teal and white grid pattern.
- FLOORING: Grey and white speckled carpet.

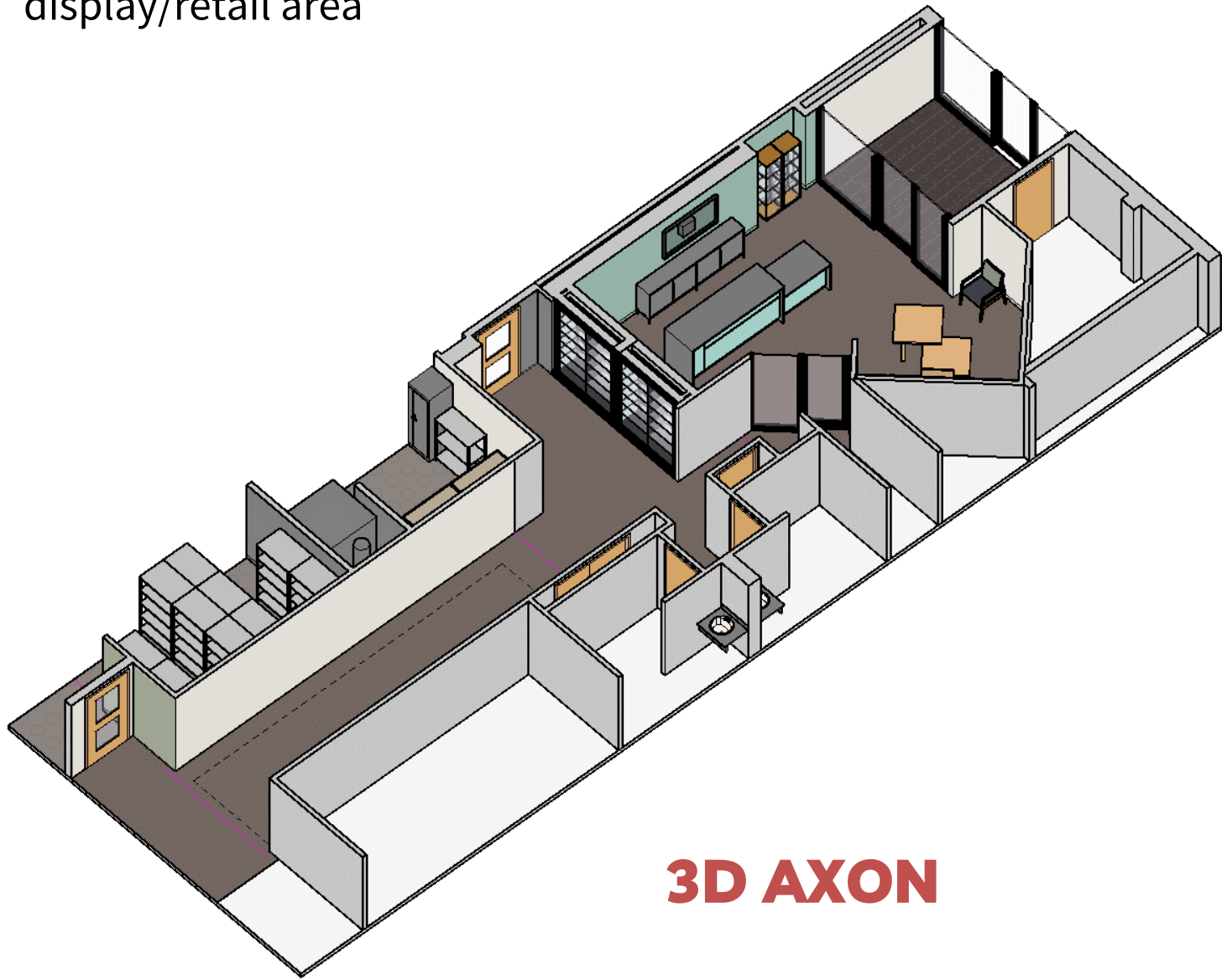


DISPLAY AREA

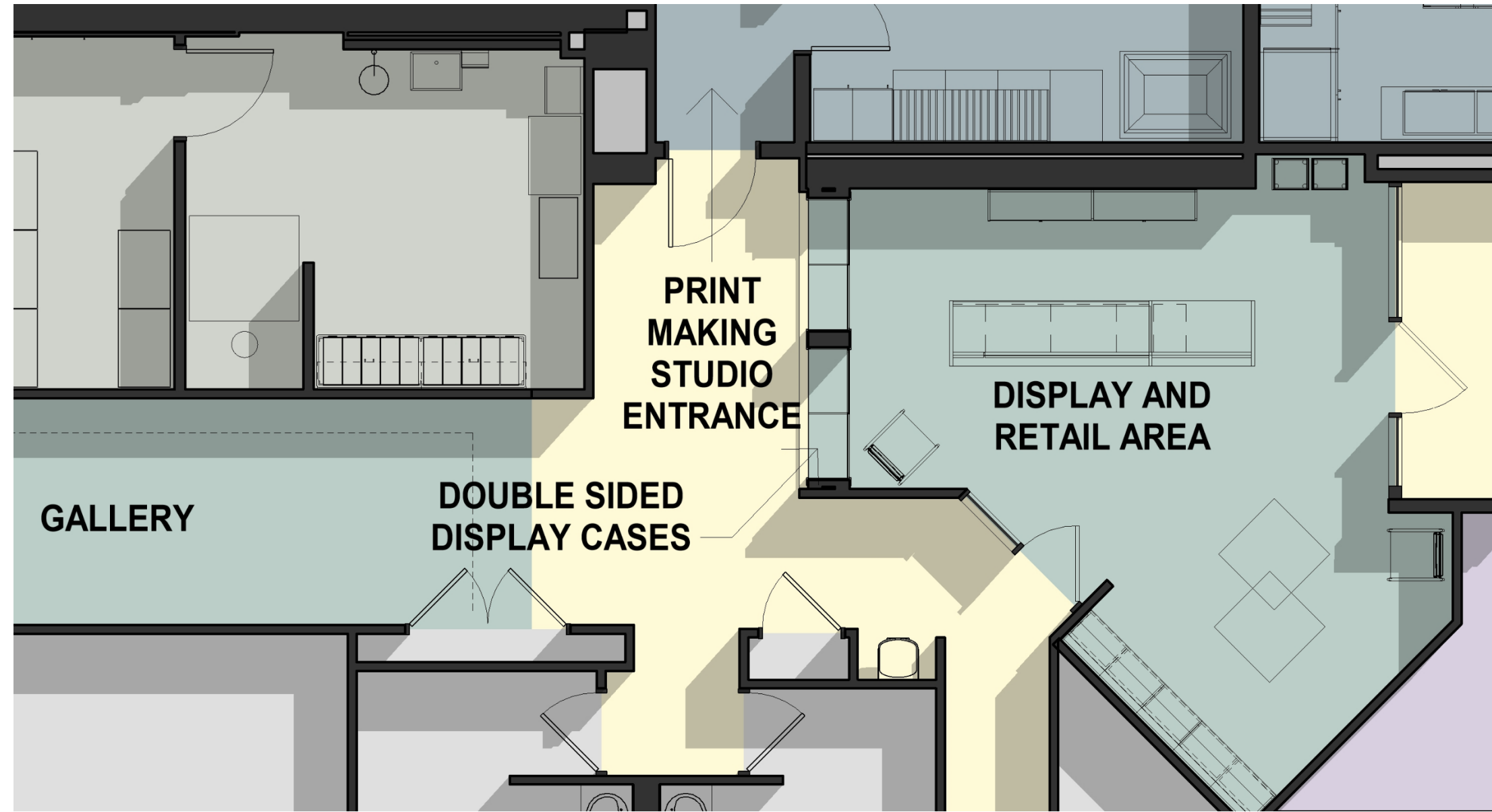
Approx. 402 SF

STUDIO SPACES/AMENITIES

- Display and Retail Area with custom built-in double sided display cases, display counter, and some soft seating
- Open corridor Gallery area provided adjacent the display/retail area










3D AXON



PLAN

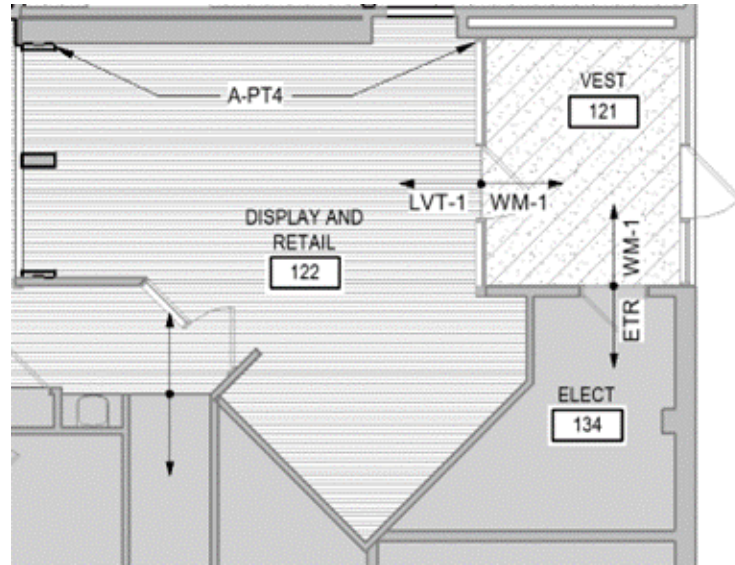
Department Legend

 CERAMIC STUDIO	 EXISTING TO REMAIN	 GALLERY/DISPLAY	 SUPPORT
 CIRCULATION	 FABRIC STUDIO	 PRINT STUDIO	

DISPLAY AREA

Approx. 402 SF

PLAN

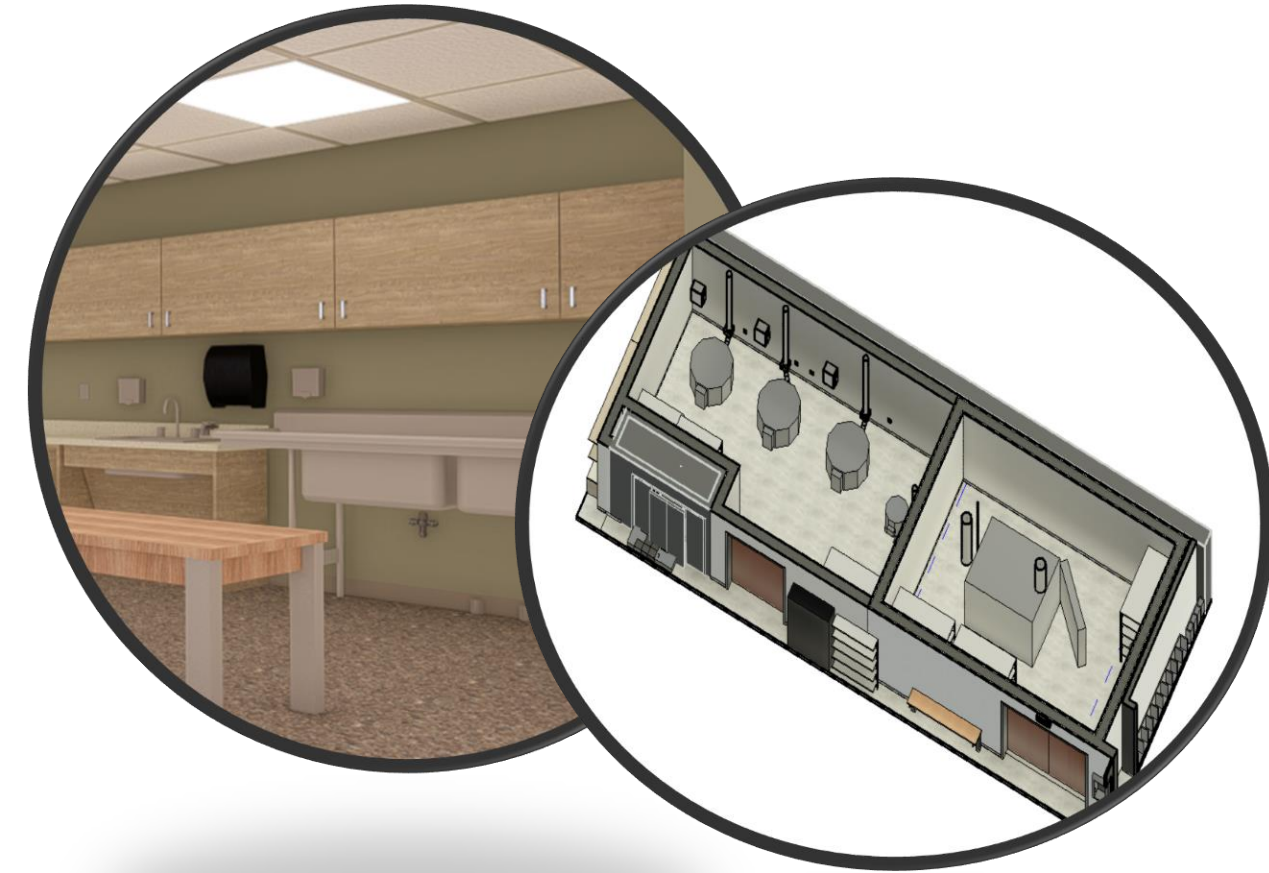
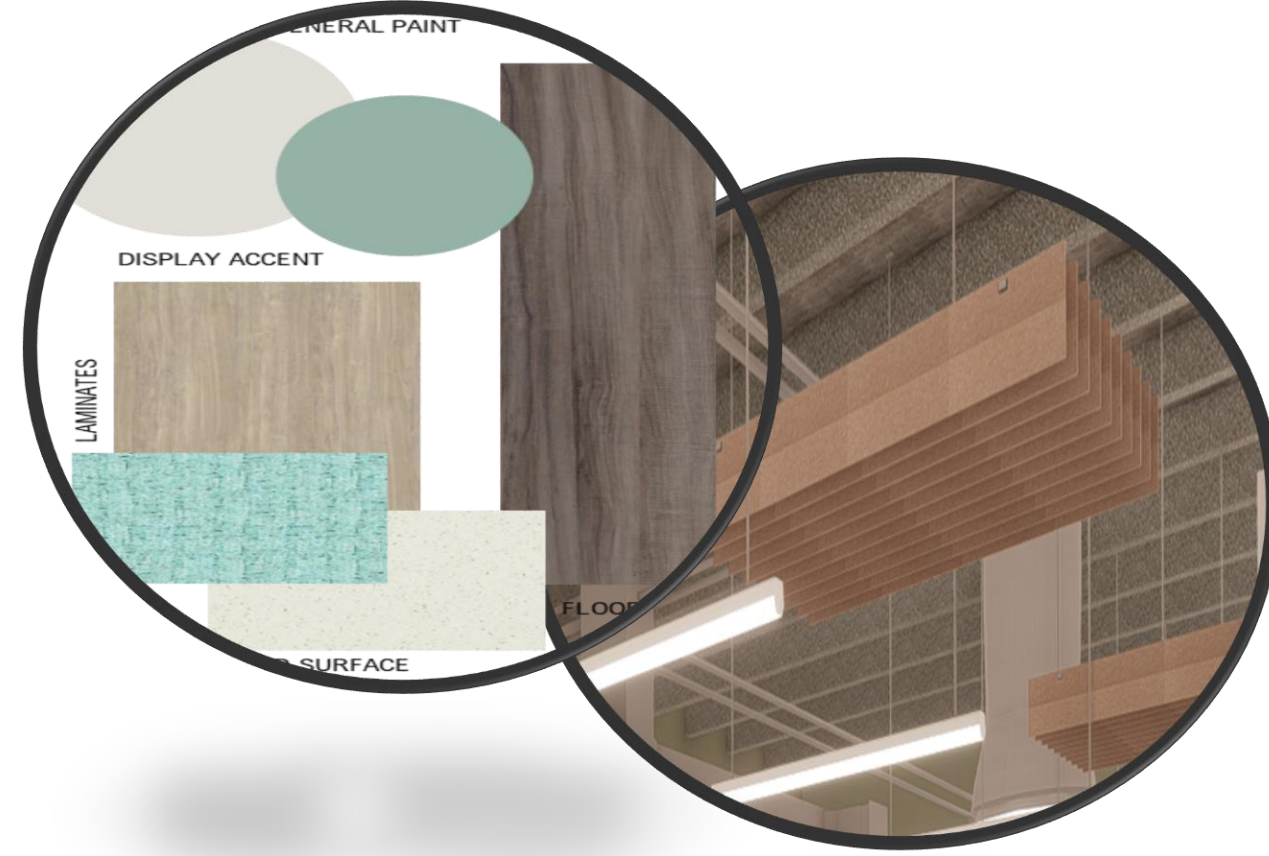
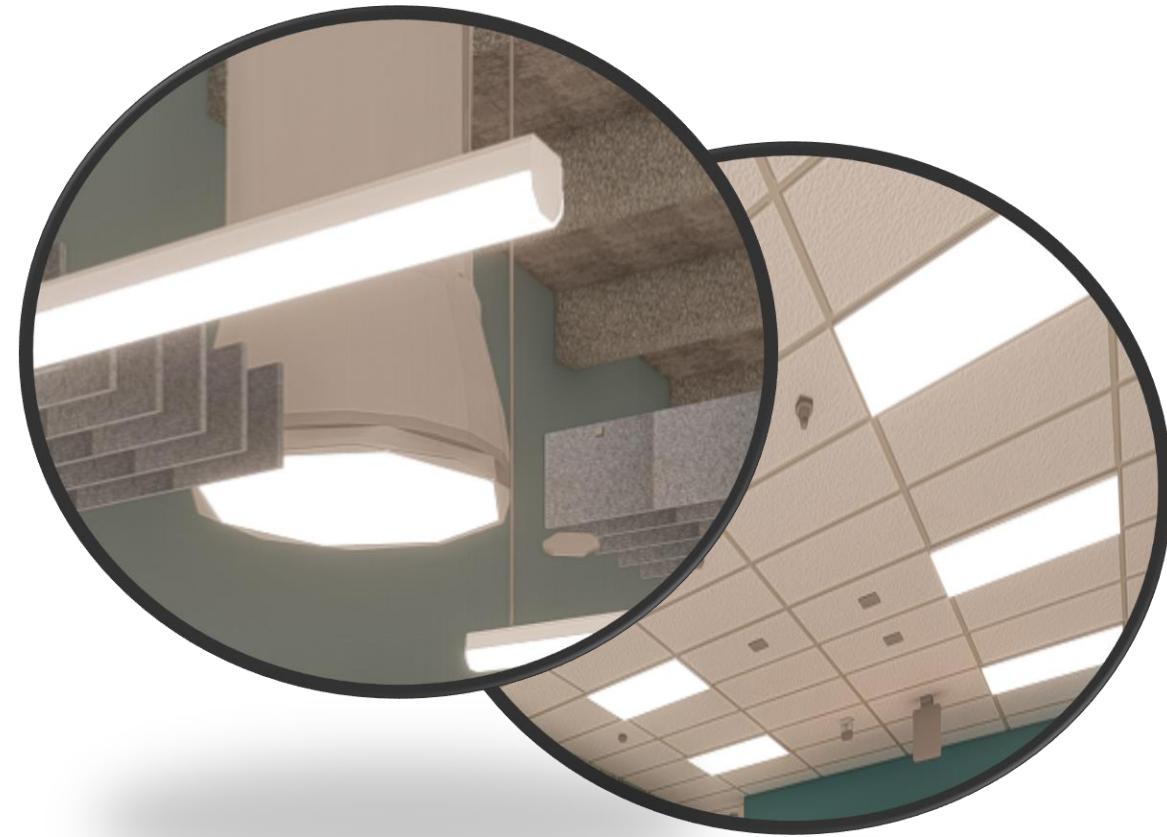


FINISHES



SUSTAINABILITY

HIGHLIGHTS THROUGHOUT THE NEW STUDIOS



Indoor Lighting Quality - LED Lighting / Daylighting

- Sky Vault – to provide ample daylighting throughout the large space
- New Window Walls in renovated studio*
- New LED Light Fixtures

Indoor Air Quality - Low Emitting Materials (per LEED v4)

- LVT Flooring _ FloorScore Certified (100% Recyclable)
- Wallcoverings (Free of phthalates & Printed with HAP-free inks)
- Solid Surface Countertops (GREENGUARD Certified – FDA Approved)
- Laminate (GREENGUARD Gold Certified, SCS Indoor Advantage Gold)
- Acoustic Ceiling Baffles (Red List Free; Declare label)

Efficient Equipment and “Recycled” Furniture

- Water Efficient Plumbing Fixtures
 - Low-Flow Plumbing in Restroom
 - Plaster Traps and Acid Neutralization for sinks provided
- Reusing existing furniture and equipment from existing facilities
- Building planning to switch to all electric power minus the one gas kiln for the ceramic studio

*This is a part of a separate project and not included in the Molesey Architects renovation



MOSELEYARCHITECTS

ARLINGTON
VIRGINIA

QUESTIONS?

THANKS FOR ATTENDING

CONTACT US



**3700 S. Four Mile Run
Arlington, VA**



**INSTAGRAM: @ARL_ARTSCENE
FACEBOOK: @ARTS.ARLINGTON**



**Joan Lynch – Director of
Arts Enterprise, Cultural
Affairs/Arlington Arts**



Arlingtonarts.org

Jmlynch@arlingtonva.us

