

# Cardinal School Stormwater Detention Vault

Watershed Scale Anchor Project

## County-APS Partnership

November 9, 2021



# Cardinal School Site



# Key Engagement Meetings to Date

- County/School Board – December, 2020
- Four CAs and PTA in January/February, 2021 with 30% plans
- Civic Federation – February 16, 2021
- Sports Commission – February 25, 2021
- Use Permit Hearing – March 2, 2021
- County/School Board – March, 2021
- C2E2 – May 17, 2021
- 65% Design Public meeting – May 26, 2021
- Final Design Public meeting – July 28, 2021
- County Board/School Board Meetings – September
- Lexington neighbors on-site meeting – September 15, 2021
- Pre-construction meeting – September 22, 2021
- PTA Meeting – November 9, 2021
- Public engagement/outreach will continue through project completion

# Phase 2 – vault construction

StormTrap modules were selected for the project



## Detention

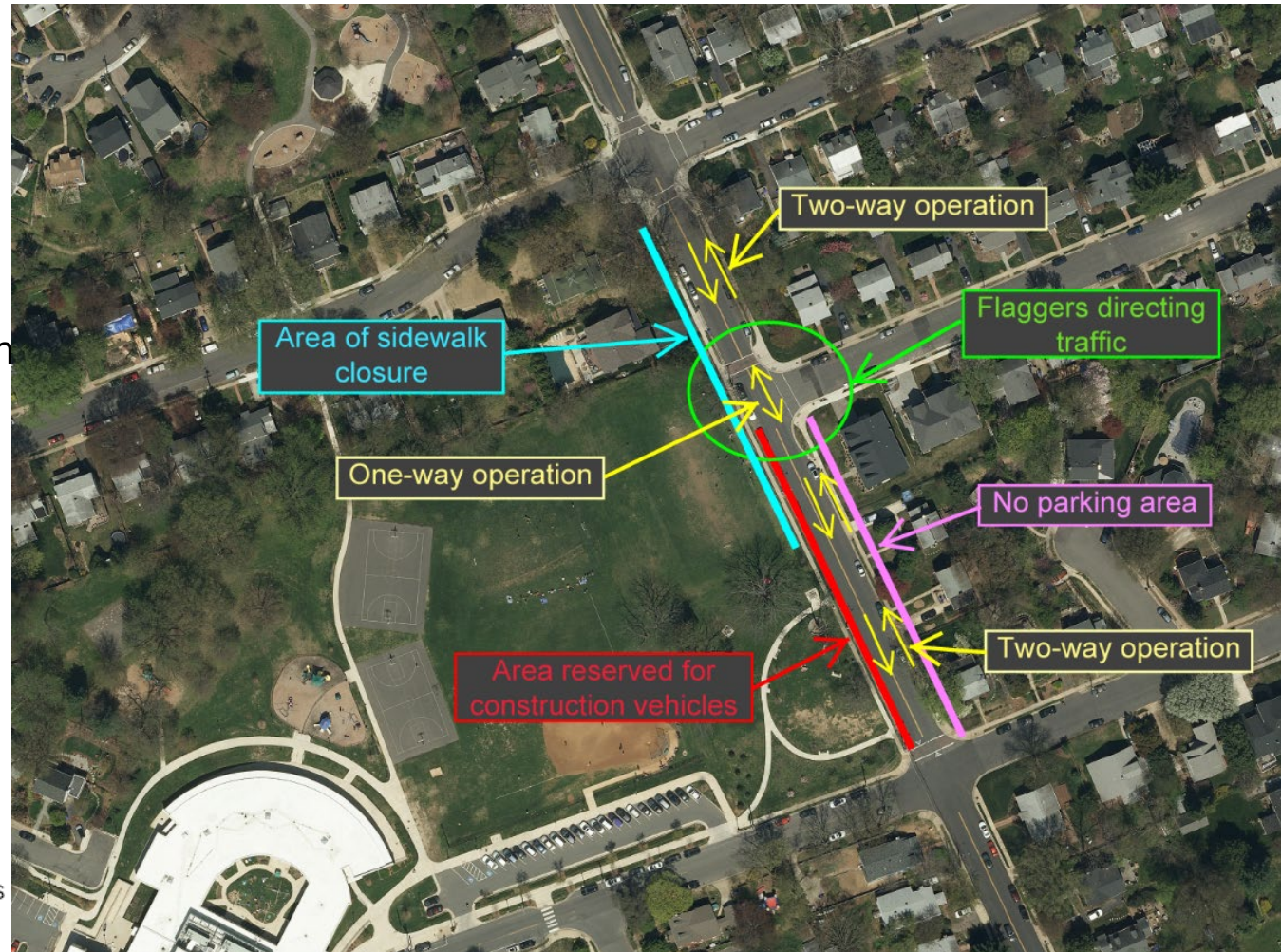
StormTrap underground stormwater detention systems temporarily store runoff in large underground chambers before releasing it at a controlled rate. This mitigates erosion, flooding and many of the other harmful effects of high volumes of stormwater runoff.

# Maintenance of Transportation (MOT) Plan

## During Working Hours

### Highlights:

- Left side of Lexington below 18<sup>th</sup> road will be reserved for construction
- 2-way traffic on Lexington (except by 18<sup>th</sup> road)
- Flaggers on Lexington near 18<sup>th</sup> Road
- No parking on Lexington between 18<sup>th</sup> St and 18<sup>th</sup> Road
- Upper part of Lexington sidewalk closed (part by park open)
- ROW hours are 9-4



PARKING OF CONSTRUCTION AND STAFF VEHICLES IS PROHIBITED WITHIN THE PROPOSED EMERGENCY VEHICLE ZONE.

# Alternate Routes

- If possible, walkers should avoid intersection of 18<sup>th</sup> St and N. Lexington
- Alternate routes:
  - 19<sup>th</sup> St to north side of school
  - 16<sup>th</sup> St to Longfellow St
- Please avoid driving on N. Lexington between 18<sup>th</sup> St and 18<sup>th</sup> Road, if possible

which afford access to within fifty (50) feet of all booths, tents, rides, and any other equipment, buildings, or structures used as part of, or in conjunction with, the special event.

# MOT Plan

## During Non-Working Hours

### Highlights:

- 2-way traffic along entire length of Lexington
- Left side of Lexington below 18<sup>th</sup> road will be reserved for construction
- Upper part of Lexington sidewalk closed (part by park open)

PARKING OF CONSTRUCTION AND STAFF VEHICLES IS PROHIBITED WITHIN THE PROPOSED EMERGENCY VEHICLE ZONE.

SAFETY FENCE TO BE MOVED BACK, AFTER CONSTRUCTION HOURS, TO ALLOW FOR 2-WAY TRAFFIC (10' MIN LANE WIDTH) AT THE INTERSECTION OF NORTH LEXINGTON STREET AND 18TH ROAD NORTH. FENCE TO BE RESET, AS SHOWN ON SHEET C-14.00, AT THE BEGINNING OF THE DAY AND INTERSECTION TRAFFIC TO BE GUIDED BY FLAGGERS AT ALL TIMES DURING CONSTRUCTION HOURS.



# Schedule and Next Steps

- Construction start date – late November/early December. Community will be notified of exact start date before construction starts.
- December 8, 2021 – Next community meeting (tentative)



# Questions?

## Project Team

Demetra McBride, OSEM Bureau Chief, [dmcbride@arlingtonva.us](mailto:dmcbride@arlingtonva.us)

Elizabeth Thurber, Infrastructure Team Leader, [ethurber@arlingtonva.us](mailto:ethurber@arlingtonva.us)

Aileen Winqvist, Communications Manager, [awinqvist@arlingtonva.us](mailto:awinqvist@arlingtonva.us)

## Project Manager

Ajibola (Aji) Robinson PMP. Project Manager,

C. 571-238-0334

E. [ajibola.robinson@apsva.us](mailto:ajibola.robinson@apsva.us)

## Project Websites

<https://www.arlingtonva.us/Government/Projects/Project-Types/Water-Utilities/Reed-School-Stormwater-Vault>

<https://www.apsva.us/design-and-construction/cardinal-elementary/>