

Report Summary

Approvals: In 2022, the County Board approved six (6) special exception development projects, totaling over 3 million SF of office, 191,677 SF of retail, 43,261 SF of other space, and 1,625 residential units. Three residential projects were approved in the Rosslyn-Ballston Corridor, accounting for 1,345 residential units (83% of total units approved) and 47,076 SF of retail space (25% of total retail space approved). PenPlace, the next phase of Amazon's development broken into five phases, was approved in the Richmond Highway Corridor. Over 3 million SF of office space was approved at this site, which is over three times the 10-year average. Retail approved county-wide was also slightly higher than the 10-year average.

Construction Starts: Construction started on 17 projects, totaling 195,281 SF of office space, 199,496 SF of retail, 192,398 SF of other space, 3,399 residential units, and 375 hotel rooms. Eight (8) mixed-use, multi-family residential projects located within the planning corridors started construction, accounting for 3,206 residential units (94% of total units that started construction). This is over twice as many units that started construction on average between 2012 and 2021. The retail within these mixed-use projects is double the 10-year average. The number of single family homes that started construction in 2022 is 12 units less than the 10-year average. Twenty-five (25) accessory dwellings have started construction on average over the past two years. This year was slightly lower, with 19 units starting construction.

Note: Planning Corridors include the Rosslyn-Ballston Corridor, the Richmond Highway Corridor, and the Columbia Pike Corridor.

Completions: This past year, 10 projects were completed, adding 40,519 SF of retail, 364,862 SF of other space, and 1,122 residential units to the County. Outside of the planning corridors, the amount of other space completed was nearly double the 10-year average, primarily attributed to the completion of 358,112 SF of classroom space at Washington-Liberty High School. An additional 6,750 SF of community space was completed at the American Legion/APAH site. For the second year in a row, no office space has been completed. The number of single family homes completed in 2022 is 8 units less than the 10-year average. In 2022, 16 accessory dwellings were completed, slightly lower than the 21 units completed the year before.

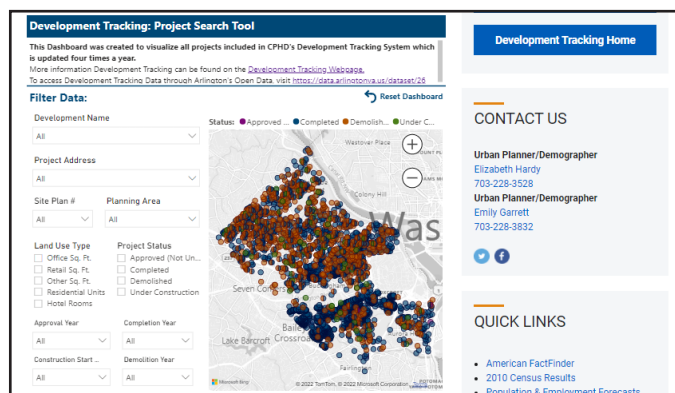
Demolitions: There were 10 major demolitions. Future development is planned for most of these sites throughout the County. In Clarendon, the 10,272 SF Red Top Office was demolished for the construction of Clarendon West (West Block), where 267 residential units are currently under construction. Two Ballston Baptist Church buildings containing 10,456 SF of other space were demolished for the future construction of 84 residential units at 11th and Vermont. Crystal Plaza Office Building 1 in Crystal City was also demolished. This site is approved for 22,059 SF of retail and 758 residential units. Additionally, Hall's Hill Fire Station No. 8 was demolished and the new fire station is currently under construction. The amount of other space and single family homes demolished exceeded the 10-year average by 77,691 SF and 22 units respectively.

Summary of 2022 Development Activity

| | Office (GFA) | Retail (GFA) | Other (GFA) | Residential: Total (Units) | Residential: Multifamily (Units) | Residential: Single Family (Units) | Hotel Rooms |
|----------------------------|--------------|--------------|-------------|----------------------------|----------------------------------|------------------------------------|-------------|
| Approvals | 3,158,529 | 191,677 | 43,261 | 1,625 | 1,625 | - | - |
| Construction Starts | 195,281 | 199,496 | 192,398 | 3,399 | 3,233 | 166 | 375 |
| Completions | - | 40,519 | 364,862 | 1,122 | 953 | 169 | - |
| Demolitions | 174,887 | 18,472 | 154,127 | 248 | 63 | 185 | - |

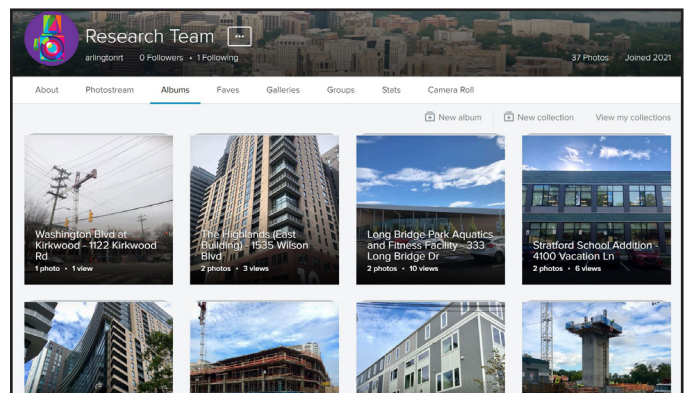
Development Tracking: Project Search Tool

Search for and interact with development data:
<https://www.arlingtonva.us/Government/Projects/Data-Research/Development/Project-Search>



Project Photos

View project photos from staff site visits:
www.flickr.com/photos/arlingtonrt/



Approvals

A project that is administratively approved and built per the site’s current zoning requirements is called a by-right (B-R) project. Within certain zoning districts, developers may apply for a “special exception” that allows for more flexibility in development form, use, and density than is permitted by-right. These special exceptions must go through public review and be approved by the County Board. The primary special exception process for large projects is the “site plan” process. Other special exceptions are granted through use permits, including unified residential and unified commercial mixed-use developments. In 2003, the County Board adopted a Form Based Code for Columbia Pike; these Form Based Code projects are typically approved either by-right or through the use permit process.

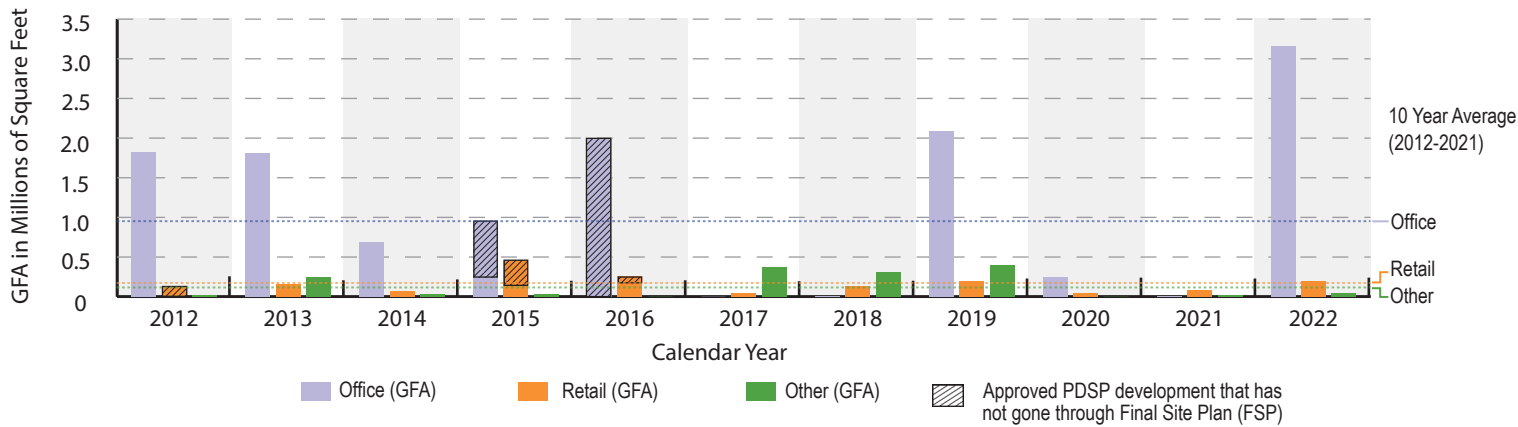
The following tables and charts display all major projects (site plan or use permit) that were approved by the County Board in 2022 as well as all Form Based Code projects approved (either by-right or as a use permit) in 2022. Other, administratively approved, by-right projects are not listed in this section. The summary table and detailed projects table for approved projects only include special exception site plan and use permit development projects. Phased development site plans (PDSP) that have not gone through a final site plan (FSP) are shown in cross-hatching on the following charts and are not included in the 2022 amount or 10-year annual average.

Summary

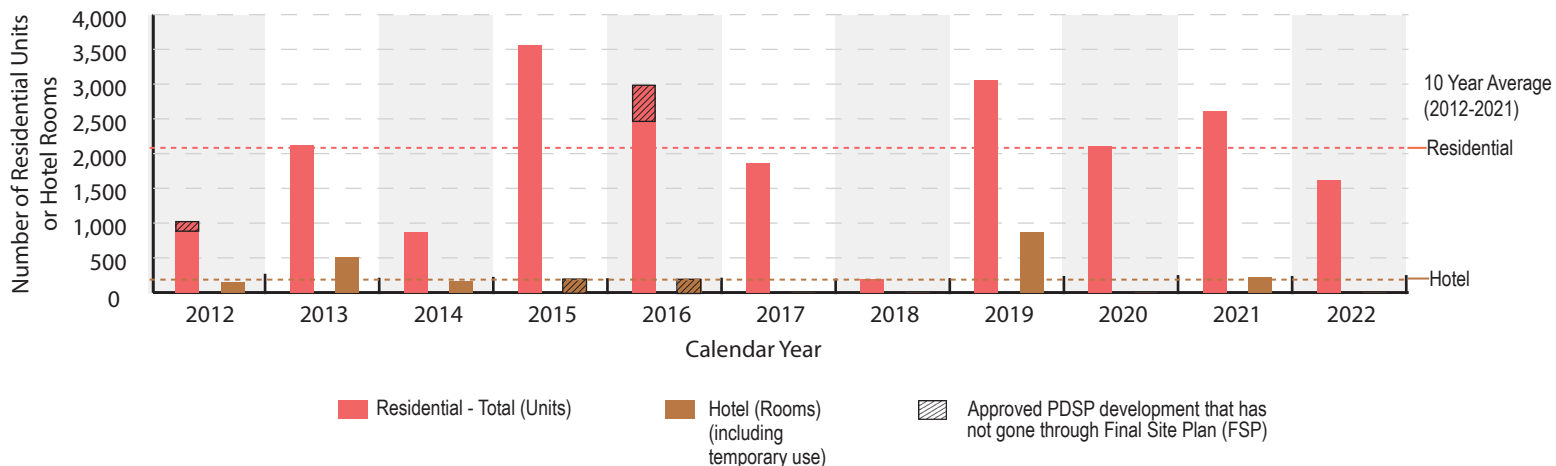
| | Office (GFA) | Retail (GFA) | Other (GFA) | Residential: Total (Units) | Residential: Multifamily (Units) | Residential: Single Family (Units) | Hotel Rooms* |
|---|--------------|--------------|-------------|----------------------------|----------------------------------|------------------------------------|--------------|
| 2022 Amount | 3,158,529 | 191,677 | 43,261 | 1,625 | 1,625 | - | - |
| 10 Year Annual Average (2012-2021) | 962,851 | 156,821 | 142,518 | 2,040 | 2,039 | 1 | 233 |

*Includes temporary conversion of residential unit to hotel room for up to 24 months

Office, Retail, and Other Space Approved by Year (2012-2022)



Residential Units and Hotel Rooms Approved by Year (2012-2022)



Major Projects Approved in 2022

| Development Name | Area | Site Plan Number | Office (GFA) | Retail (GFA) | Other (GFA) | Residential Units | Hotel Rooms |
|------------------------------------|---------------|------------------|------------------|----------------|---------------|-------------------|-------------|
| Rosslyn-Ballston Corridor | | | | | | | |
| Marbella Apartments - Phase I | Rosslyn | 463 | - | - | - | 325 | - |
| Marbella Apartments - Phase II | Rosslyn | 463 | - | - | - | 236 | - |
| Wendy's Site | Courthouse | 435 | - | 4,000 | - | 231 | - |
| Ballston Macy's Site | Ballston | 193 | - | 43,076 | - | 553 | - |
| <i>Subtotal</i> | | | - | 47,076 | - | 1,345 | - |
| Richmond Highway Corridor | | | | | | | |
| PenPlace - Below Grade | Pentagon City | 105 | 178,080 | - | - | - | - |
| PenPlace - Helix Building | Pentagon City | 105 | 213,683 | 13,490 | - | - | - |
| PenPlace - Tower 1 and Pavilions 1 | Pentagon City | 105 | 937,572 | 47,566 | - | - | - |
| PenPlace - Tower 2 and Pavilion 2 | Pentagon City | 105 | 909,485 | 33,302 | - | - | - |
| PenPlace - Tower 3 | Pentagon City | 105 | 919,709 | - | 43,261 | - | - |
| <i>Subtotal</i> | | | 3,158,529 | 94,358 | 43,261 | - | - |
| Columbia Pike Corridor | | | | | | | |
| The Elliott | Columbia Pike | FBC | - | 50,243 | - | 250 | - |
| <i>Subtotal</i> | | | - | 50,243 | - | 250 | - |
| Other Areas | | | | | | | |
| 2608 Shirlington Rd | Green Valley | UCMUD | - | - | - | 30 | - |
| <i>Subtotal</i> | | | - | - | - | 30 | - |
| Arlington County Total | | | 3,158,529 | 191,677 | 43,261 | 1,625 | - |

Construction Starts

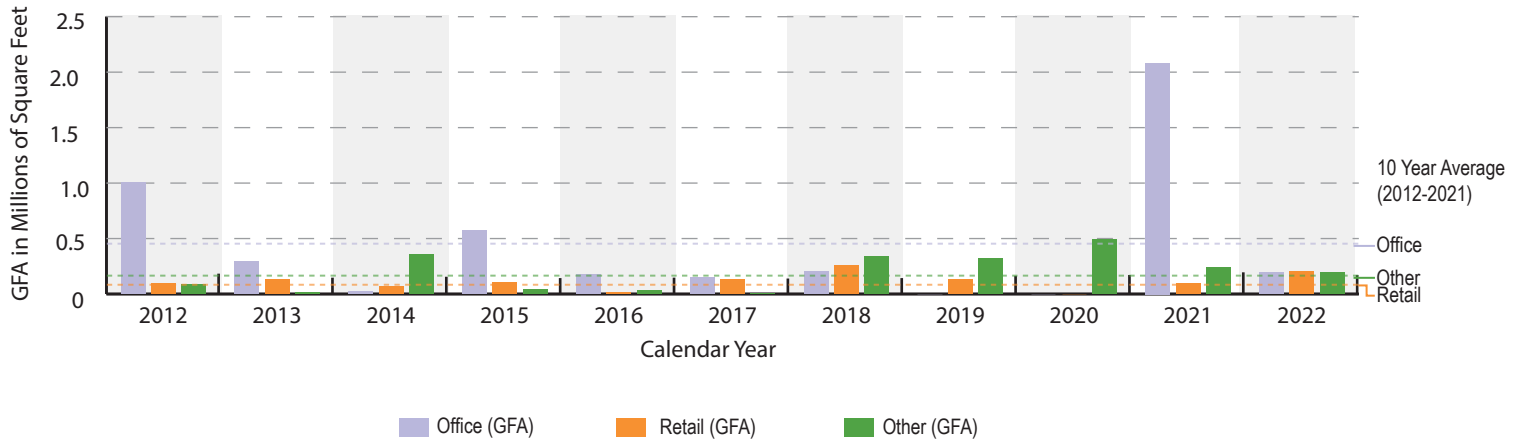
This section displays construction starts, those projects which have started construction, for all development types in 2022. Single Family Home projects are defined as starting construction when their building permits are issued. All major projects are defined as starting construction when building permits are issued and construction activity proceeds above grade.

Summary

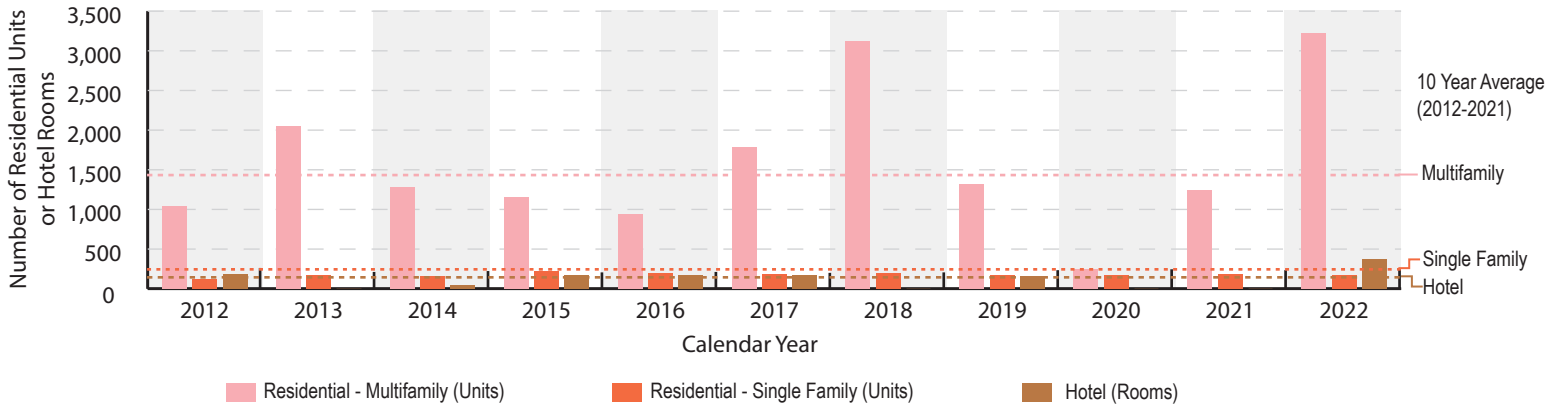
| | Office (GFA) | Retail (GFA) | Other (GFA) | Residential: Total (Units) | Residential: Multifamily (Units) | Residential: Single Family (Units) | Hotel Rooms* |
|---|--------------|--------------|-------------|----------------------------|----------------------------------|------------------------------------|--------------|
| 2022 Amount | 195,281 | 199,496 | 192,398 | 3,399 | 3,233 | 166 | 375 |
| 10 Year Annual Average (2012-2021) | 450,512 | 101,830 | 192,640 | 1,597 | 1,419 | 178 | 90 |

*Includes temporary conversion of residential unit to hotel room for up to 24 months

Office, Retail, and Other Space Construction Starts by Year (2012-2022)



Residential Unit and Hotel Room Construction Starts by Year (2012-2022)



Major Projects Started Construction in 2022

| Development Name | Area | Site Plan Number | Office (GFA) | Retail (GFA) | Other (GFA) | Residential Units | Hotel Rooms |
|---|-----------------------|------------------|----------------|----------------|----------------|-------------------|-------------|
| Rosslyn-Ballston Corridor | | | | | | | |
| Rosslyn Holiday Inn | Rosslyn | 79 | - | 14,412 | 37,417 | 502 | 375 |
| The Commodore (Courthouse Landmark Block) | Courthouse | 457 | - | 17,000 | - | 423 | - |
| Clarendon West (West Block) | Clarendon | 438 | - | - | - | 267 | - |
| 3901 Fairfax Drive | Virginia Square | 386 | 178,131 | 16,185 | 7,311 | - | - |
| Ballston Station/Ballston Central United Methodist Church | Ballston | 443 | - | - | 23,499 | 144 | - |
| Harris Teeter Site | Ballston | 315 | - | 77,575 | - | 732 | - |
| <i>Subtotal</i> | | | <i>178,131</i> | <i>125,172</i> | <i>68,227</i> | <i>2,068</i> | <i>375</i> |
| Richmond Highway Corridor | | | | | | | |
| 1900 Crystal Drive | Crystal City | 56 & 421 | - | 39,890 | - | 811 | - |
| Crystal City Water Park | Crystal City | B-R | - | - | 18,602 | - | - |
| Rosenthal Porsche | Crystal City | B-R | - | 11,434 | - | - | - |
| <i>Subtotal</i> | | | <i>-</i> | <i>51,324</i> | <i>18,602</i> | <i>811</i> | <i>-</i> |
| Columbia Pike Corridor | | | | | | | |
| Arlington View Terrace | Columbia Pike | FBC | - | - | - | 77 | - |
| Westmont Shopping Center | Columbia Pike | FBC | - | 23,000 | - | 250 | - |
| <i>Subtotal</i> | | | <i>-</i> | <i>23,000</i> | <i>-</i> | <i>327</i> | <i>-</i> |
| Other Areas | | | | | | | |
| St. Timothy and St. Anthanasius Coptic Orthodox Church | Green Valley | B-R | - | - | 103,546 | - | - |
| 2019 S Kenmore St | Green Valley | B-R | - | - | - | 4 | - |
| Fire Station No. 8 | Langston Boulevard | B-R | - | - | 2,023 | - | - |
| WETA | Shirlington | 106 | 17,150 | - | - | - | - |
| Vernon Street Duplex | Outside Planning Area | 461 | - | - | - | 2 | - |
| 2101/2103 S Monroe St Townhomes | Outside Planning Area | B-R | - | - | - | 2 | - |
| <i>Subtotal</i> | | | <i>17,150</i> | <i>-</i> | <i>105,569</i> | <i>8</i> | <i>-</i> |
| Accessory Dwelling Units | | | - | - | - | 19 | - |
| Single Family Homes | | | - | - | - | 166 | - |
| Arlington County Total | | | 195,281 | 199,496 | 192,398 | 3,399 | 375 |

Completions

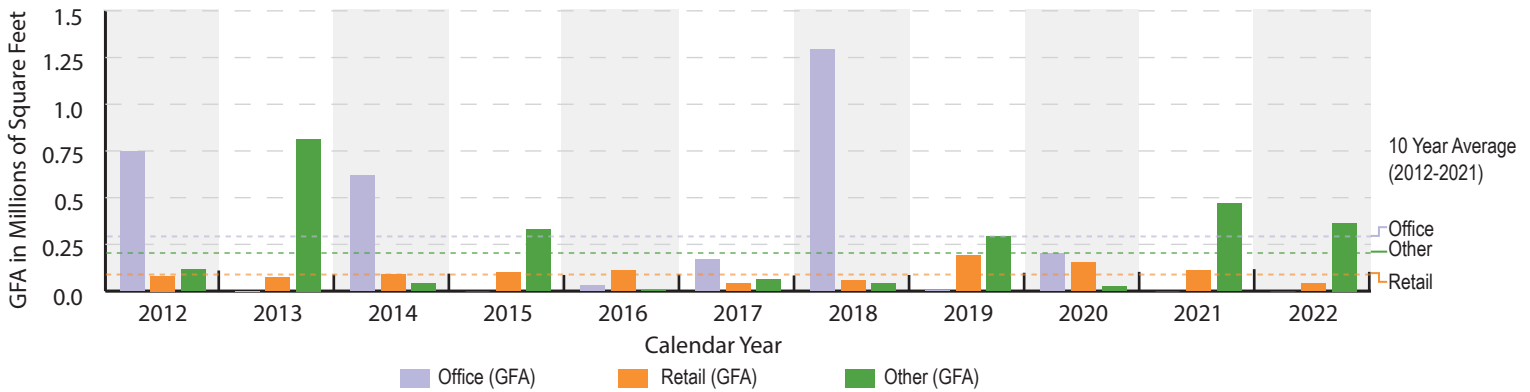
This section displays completions for all development types in 2022. Single Family Home and other minor projects are defined as complete when issued a Master Certificate of Occupancy Permit. Major projects are defined as complete when the certificate of occupancy permits have been issued for at least 50 percent of the project's total gross floor area (GFA) or number of residential units.

Summary

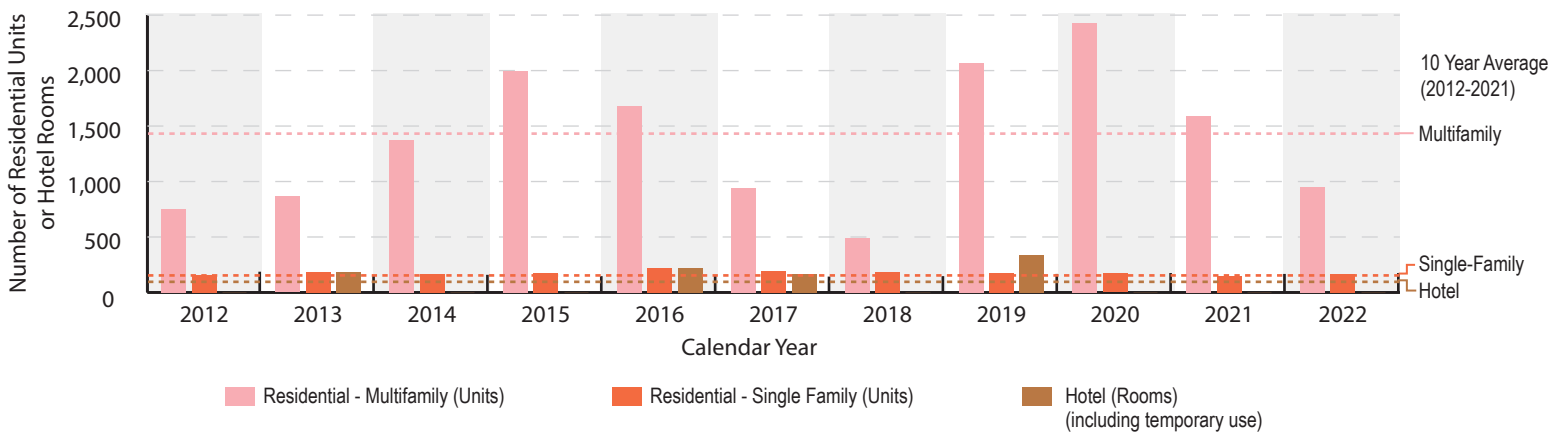
| | Office (GFA) | Retail (GFA) | Other (GFA) | Residential: Total (Units) | Residential: Multifamily (Units)* | Residential: Single Family (Units) | Hotel Rooms* |
|---|--------------|--------------|-------------|----------------------------|-----------------------------------|------------------------------------|--------------|
| 2022 Amount | - | 40,519 | 364,862 | 1,122 | 953 | 169 | - |
| 10 Year Annual Average (2012-2021) | 306,613 | 100,201 | 218,396 | 1,596 | 1,419 | 177 | 90 |

*Includes temporary conversion of residential unit to hotel room for up to 24 months

Office, Retail, and Other Space Completions by Year (2012-2022)



Residential Unit and Hotel Room Completions by Year (2012-2022)



Major Projects Completed in 2022

| Development Name | Area | Site Plan Number | Office (GFA) | Retail (GFA) | Other (GFA) | Residential Units | Hotel Rooms |
|--|-----------------------|------------------|--------------|---------------|----------------|-------------------|-------------|
| Rosslyn-Ballston Corridor | | | | | | | |
| 1500 Arlington Blvd | Rosslyn | UC | - | - | - | 261 | - |
| N. Veitch Street Townhomes | Courthouse | 453 | - | - | - | 7 | - |
| 2000 Clarendon Blvd | Courthouse | 441 | - | 1921 | - | 90 | - |
| Clarendon Market Common Phase II Amendment | Clarendon | 339 | - | 27945 | - | - | - |
| <i>Subtotal</i> | | | - | 29,866 | - | 358 | - |
| Richmond Highway Corridor | | | | | | | |
| Sage at National Landing | Crystal City | 244 | - | 10,653 | - | 306 | - |
| <i>Subtotal</i> | | | - | 10,653 | - | 306 | - |
| Other Areas | | | | | | | |
| American Legion/APAH | Outside Planning Area | 449 | - | - | 6,750 | 160 | - |
| Education Center | Outside Planning Area | UP | - | - | 358,112 | - | - |
| The Cadence (Garden Units) | Outside Planning Area | 446 | - | - | - | 97 | - |
| The Townes at South Glebe I | Outside Planning Area | B-R | - | - | - | 6 | - |
| The Townes at South Glebe II | Green Valley | B-R | - | - | - | 10 | - |
| <i>Subtotal</i> | | | - | - | 364,862 | 273 | - |
| Accessory Dwelling Units | | | - | - | - | 16 | - |
| Single Family Homes | | | - | - | - | 169 | - |
| Arlington County Total | | | - | 40,519 | 364,862 | 1,122 | - |

Demolitions

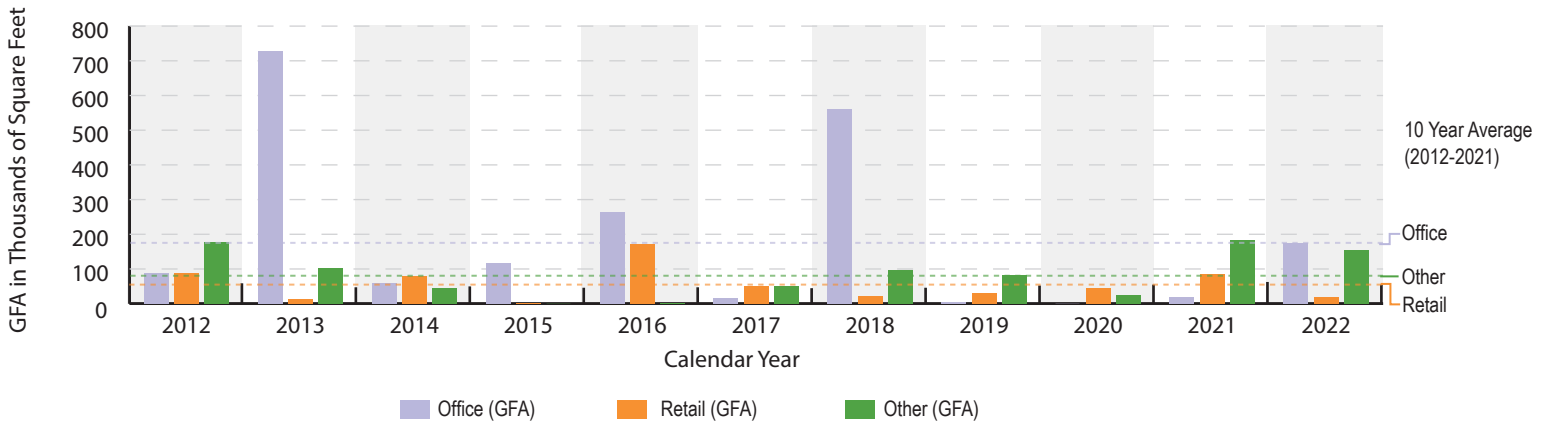
This section displays demolitions for all development types in 2022. Demolition permits are issued for the complete demolition of the building and demolition sheets are used for partial demolitions in cases of renovations or additions and are not tracked. All projects are defined as demolished when they receive their demolition permit.

Summary

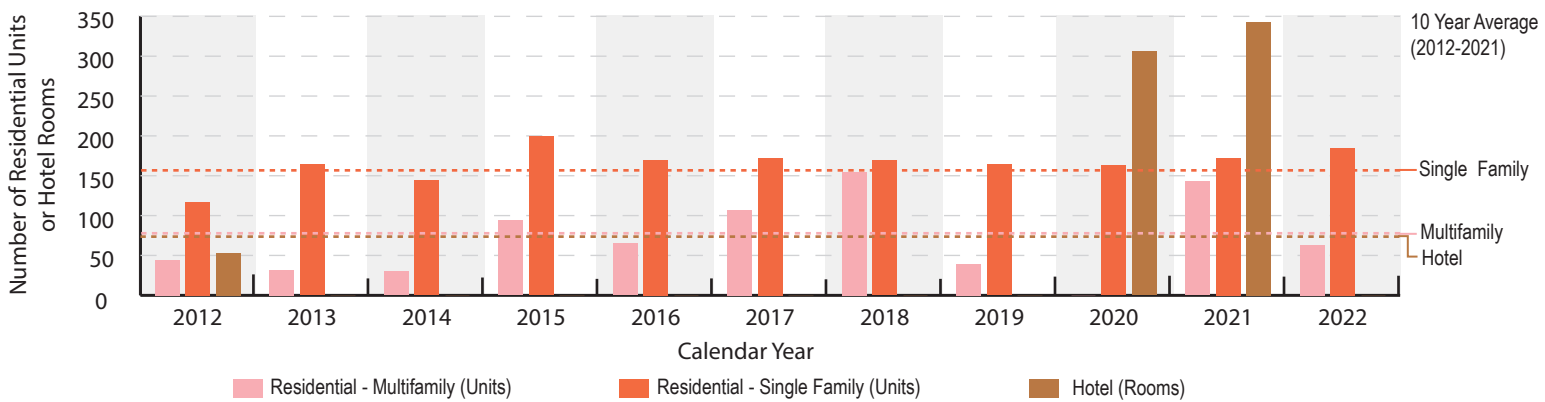
| | Office (GFA) | Retail (GFA) | Other (GFA) | Residential: Total (Units) | Residential: Multifamily (Units)* | Residential: Single Family (Units) | Hotel Rooms* |
|---------------------------------------|--------------|--------------|-------------|----------------------------|-----------------------------------|------------------------------------|--------------|
| 2022 Amount | 174,887 | 18,472 | 154,127 | 248 | 63 | 185 | - |
| 10 Year Annual Avg (2012-2021) | 185,286 | 58,794 | 76,436 | 234 | 71 | 163 | 70 |

*Includes temporary conversion of residential unit to hotel room for up to 24 months

Office, Retail, and Other Space Demolitions by Year (2012-2022)



Residential Unit and Hotel Room Demolitions by Year (2012-2022)



Major Projects Demolished in 2022

| Development Name | Area | Site Plan Number | Office (GFA) | Retail (GFA) | Other (GFA) | Residential Units | Hotel Rooms |
|---|-----------------------|------------------|----------------|---------------|----------------|-------------------|-------------|
| Rosslyn-Ballston Corridor | | | | | | | |
| Red Top Office | Clarendon | 392 & 438 | 10,272 | - | - | - | - |
| Ballston Baptist Church | Ballston | 447 | - | - | 8,223 | - | - |
| Ballston Baptist Church Rectory | Ballston | 232 & 447 | - | - | 2,233 | - | - |
| <i>Subtotal</i> | | | 10,272 | - | 10,456 | - | - |
| Richmond Highway Corridor | | | | | | | |
| 1601 Crystal Dr | Crystal City | 167 | - | 647 | - | - | - |
| Crystal Plaza: Office Bldg. 1 | Crystal City | 11 | 164,615 | 8,568 | - | - | - |
| <i>Subtotal</i> | | | 164,615 | 9,215 | - | - | - |
| Columbia Pike Corridor | | | | | | | |
| 601 S Carlin Springs Rd (Former VHC Urgent Care Facility) | Columbia Pike | UP | - | - | 138,405 | - | - |
| Columbia Garden Apartments | Columbia Pike | B-R | - | - | - | 62 | - |
| <i>Subtotal</i> | | | - | - | 138,405 | 62 | - |
| Other Areas | | | | | | | |
| Halls Hill Fire Station No. 8 | Langston Boulevard | B-R | - | - | 5,266 | - | - |
| 2726 S Uhle St | Outside Planning Area | B-R | - | - | - | 1 | - |
| Warehouse (2633 Shirlington Rd) | Outside Planning Area | B-R | - | 9,257 | - | - | - |
| <i>Subtotal</i> | | | - | 9,257 | 5,266 | 1 | - |
| Single Family Homes | | | | | | | |
| | | | - | - | - | 185 | - |
| Arlington County Total | | | 174,887 | 18,472 | 154,127 | 248 | - |

Data Table Overview

In addition to the above highlights, detailed tables showing completions, construction starts, approvals, and demolitions for residential units, office space, retail space, hotel rooms, and other space for calendar year 2022 accompany this document.

The attached tables are divided into four sections:

- Site Plan and other Approved Projects
- Completed Projects
- Projects Under Construction (including construction starts prior to 2022)
- Demolitions

Each section separately reports Major Projects and Single Family Houses. Data are reported for each of Arlington's Major Planning Areas and Other Planning Areas. Major Planning Areas include Rosslyn, Courthouse, Clarendon, Virginia Square, Ballston, Crystal City, Pentagon City, and Columbia Pike. Other Planning Areas include Green Valley (formerly Nauck), Shirlington, East Falls Church, Langston Boulevard, and Four Mile Run.

Interactive maps, pictures of development projects, and additional information are available at <https://www.arlingtonva.us/Government/Projects/Data-Research/Development>

Methodology

Annual development tracking reports are generated from County staff authored Board Reports, County Board minutes, and County data on Certificate of Occupancy (CO) permits, building permits, and demolitions permits.

The approval date is the date the project was approved by the County Board (by-right projects are not approved by the County Board). The Virginia State Legislature has extended the blanket expiration of approved site plans and special exception use permits beyond the terms of most final site plans approved by the County Board, with the most recent extension to July 2022. The construction start date is based on the date the first building permit was approved for the project, and projects are classified as under construction when construction activity commences above grade. In most cases, completed projects are those where a CO has been issued. In general, a project is determined to be complete if a Master CO has been issued or if partial COs have been issued for at least 50 percent of the gross floor area (GFA) or units in the project. In some cases, projects were determined to be complete or under construction based on site visits by Community Planning, Housing, and Development (CPHD) staff. The demolition date listed for demolished projects is the date the demolition permit was issued (not the date of actual demolition).

The projects contained in this report are only those that add or subtract new development potential (i.e., residential units, hotel rooms, or GFA) to current residential, hotel, office, retail and other space inventories in the County. This report does not include data on alterations or additions to single family attached or detached homes but does include information on demolition and new construction of such homes.

The multifamily residential unit subtotal includes high-rise buildings, garden style buildings, townhouses, and duplexes. Other space includes industrial, government, institutional, schools, churches, and other types of uses. The approval total only shows statistics for Final

About Research and Strategic Initiatives

The Research and Strategic Initiatives Group (RSIG) is situated in the Director's Office of the Department of Community Planning, Housing and Development. RSIG is responsible for a diverse portfolio of projects that spans three general bodies of work: land deals and joint development agreements, strategic planning efforts and special projects, as well as research and data analysis. The group's work in research and data primarily involves maintaining, analyzing, forecasting, and disseminating information related to planning, development and demographics.

If you have any questions or would like additional information, please contact the Research and Strategic Initiatives Group (RSIG) at (703) 228-3525.



Department of Community Planning, Housing and
Development (CPHD)
Research and Strategic Initiatives Group (RSIG)
(703) 228-3525

Summary of Site Plan and Other Projects

Arlington County, Virginia

Approved (Not Under Construction) As Of 12/31/2022

| Project Name | Address | Office (s.f.) | Retail (s.f.) | Other* (s.f.) | Residential Units | Hotel Rooms | Approval Date | Site Plan Number** |
|---|----------------------|------------------|------------------|------------------|----------------------|----------------|------------------|-----------------------|
| ROSSLYN | | | | | | | | |
| Marbella Apartments - Phase I | 1305 N PIERCE ST | 0 | 0 | 0 | 325 | 0 | 02/12/2022 | 463 |
| Marbella Apartments - Phase II | 1300 N PIERCE ST | 0 | 0 | 0 | 236 | 0 | 02/12/2022 | 463 |
| Rosslyn RCA Site | 1901 N MOORE ST | 0 | 12,130 | 0 | 423 | 0 | 06/12/2021 | 66 |
| Ames Center | 1820 FORT MYER DR | 8,291 | 18,001 | 16,733 | 515 | 225 | 01/23/2021 | 1 |
| Key Bridge Marriott | 1401 LANGSTON BLVD | 0 | 0 | 0 | 451 | 0 | 03/24/2020 | 53 |
| 1501 Arlington Blvd. - Best Western Site | 1501 ARLINGTON BLVD | 0 | 0 | 0 | 48 | 160 | 04/23/2019 | 233 |
| Rosslyn Plaza PDSP | 1001 WILSON BLVD | 1,810,173 | 45,000 | 0 | 550 | 200 | 03/12/2016 | 422 |
| 1401 Wilson Blvd | 1401 WILSON BLVD | 513,004 | 55,540 | 0 | 274 | 0 | 06/14/2014 | 429 |
| Rosslyn Gateway PDSP - FSP (Phase 1 - Office Building) | 1901 FT MYER DR | 490,056 | 8,688 | 0 | 0 | 0 | 07/21/2012 | 419 |
| Rosslyn Gateway PDSP - FSP (Phase 1 - Residential/Hotel Building) | 1901 FT MYER DR | 0 | 10,001 | 0 | 133 | 148 | 07/21/2012 | 419 |
| Rosslyn Gateway PDSP (Phase 2 - Remaining Allocation) | 1901 FT MYER DR | 0 | 7,687 | 0 | 140 | 0 | 07/21/2012 | 419 |
| ROSSLYN SUBTOTAL | | 2,821,524 | 157,047 | 16,733 | 3,095 | 733 | | |
| COURT HOUSE | | | | | | | | |
| Wendy's Site | 2025 CLARENDON BLVD | 0 | 4,000 | 0 | 231 | 0 | 03/19/2022 | 435 |
| Park Arlington at Courthouse | 1200 N COURTHOUSE RD | 0 | 0 | 0 | 180 | 0 | 10/17/2020 | 76 |
| Wakefield Manor | 2025 FAIRFAX DR | 0 | 0 | 0 | 104 | 0 | 10/15/2011 | 417 |
| NSTA Office Site Plan | 1840 WILSON BLVD | 107,920 | 10,000 | 0 | 0 | 0 | 11/15/2005 | 382 |
| COURT HOUSE SUBTOTAL | | 107,920 | 14,000 | 0 | 515 | 0 | | |
| VIRGINIA SQUARE | | | | | | | | |
| George Mason University - Phase III | 3401 FAIRFAX DR | 90,000 | 11,000 | 183,000 | 0 | 0 | 01/01/1994 | Sp. Ag. |
| VIRGINIA SQUARE SUBTOTAL | | 90,000 | 11,000 | 183,000 | 0 | 0 | | |
| BALLSTON | | | | | | | | |
| Ballston Macy's Site | 685 N GLEBE RD | 0 | 43,076 | 0 | 553 | 0 | 12/17/2022 | 193 |
| 11th and Vermont Residences | 1031 N VERMONT ST | 0 | 0 | 0 | 84 | 0 | 02/24/2018 | 447 |
| The Spire/Fairmont | 4420 FAIRFAX DR | 0 | 9,200 | 0 | 237 | 0 | 01/21/2006 | 331 |

| Project Name | Address | Office (s.f.) | Retail (s.f.) | Other* (s.f.) | Residential Units | Hotel Rooms | Approval Date | Site Plan Number** |
|--|----------------------|------------------|------------------|------------------|----------------------|----------------|------------------|-----------------------|
| BALLSTON SUBTOTAL | | 0 | 52,276 | 0 | 874 | 0 | | |
| CRYSTAL CITY | | | | | | | | |
| Hazel National Landing (Potomac Yard Land Bay C - East) | 2901 CRYSTAL DR | 0 | 8,246 | 0 | 491 | 0 | 06/15/2021 | 346 |
| Crystal Plaza 1 | 2001 S CLARK ST | 0 | 22,059 | 0 | 758 | 0 | 05/15/2021 | 458 |
| 101 12th Street South | 101 12TH ST S | 234,427 | 5,195 | 0 | 0 | 0 | 11/14/2020 | 229 & 456 |
| Crystal Houses III-VI | 1900 S EADS ST | 0 | 0 | 0 | 798 | 0 | 12/14/2019 | 451 |
| New Century Center Residential | 2351 RICHMOND HWY | 0 | 21,836 | 0 | 308 | 0 | 07/15/2017 | 442 |
| Boeing Site - Phase II | 608 S BALL ST | 131,338 | 0 | 0 | 0 | 0 | 10/15/2011 | 400 |
| Potomac Yard PDSP - Land Bay C - West (Remaining Allocation) | RICHMOND HWY | 561,271 | 26,170 | 0 | 0 | 0 | 12/18/2007 | 346 |
| Airport Plaza IV | 2600 CRYSTAL DR | 0 | 0 | 0 | 198 | 0 | 01/01/1981 | 145 |
| CRYSTAL CITY SUBTOTAL | | 927,036 | 83,506 | 0 | 2,553 | 0 | | |
| PENTAGON CITY | | | | | | | | |
| PenPlace - Below Grade | 535 12TH ST S | 178,080 | 0 | 0 | 0 | 0 | 04/23/2022 | 105 |
| PenPlace - Helix Building | 1080 S EADS ST | 213,683 | 13,490 | 0 | 0 | 0 | 04/23/2022 | 105 |
| PenPlace - Tower 1 and Pavilions 1 and 3 | 535 12TH ST S | 937,572 | 47,566 | 0 | 0 | 0 | 04/23/2022 | 105 |
| PenPlace - Tower 2 and Pavilion 2 | 1125 S FERN ST | 909,485 | 33,302 | 0 | 0 | 0 | 04/23/2022 | 105 |
| PenPlace - Tower 3 | 1075 S FERN ST | 919,709 | 0 | 43,261 | 0 | 0 | 04/23/2022 | 105 |
| Pentagon Centre PDSP - Phase II and III (Remaining Allocation) | 1201 S HAYES | 705,700 | 310,500 | 0 | 0 | 200 | 09/15/2015 | 297 |
| PENTAGON CITY SUBTOTAL | | 3,864,229 | 404,858 | 43,261 | 0 | 200 | | |
| COLUMBIA PIKE | | | | | | | | |
| The Elliott | 2607 COLUMBIA PIKE | 0 | 50,243 | 0 | 250 | 0 | 03/19/2022 | FBC |
| Merion Pike West - Phase I | 843 S GREENBRIER ST | 0 | 0 | 0 | 400 | 0 | 11/14/2020 | FBC |
| 2400 Columbia Pike | 2400 COLUMBIA PIKE | 0 | 12,997 | 0 | 105 | 0 | 06/18/2016 | FBC/UP |
| COLUMBIA PIKE SUBTOTAL | | 0 | 63,240 | 0 | 755 | 0 | | |
| LANGSTON BOULEVARD | | | | | | | | |
| Artis Senior Living | 2134 N TAYLOR ST | 0 | 0 | 0 | 175 | 0 | 04/25/2020 | 452 |
| 2515 Langston Blvd | 2515 LANGSTON BLVD | 0 | 12,200 | 0 | 22 | 0 | 07/08/2006 | UCMUD |
| 4601-4607 Old Dominion Dr | 4601 OLD DOMINION DR | 6,272 | 5,570 | 0 | 12 | 0 | 02/25/2006 | UCMUD |
| LANGSTON BOULEVARD SUBTOTAL | | 6,272 | 17,770 | 0 | 209 | 0 | | |
| GREEN VALLEY | | | | | | | | |
| 2608 Shirlington Rd | 2608 SHIRLINGTON RD | 0 | 0 | 0 | 30 | 0 | 06/18/2022 | UCMUD |
| GREEN VALLEY SUBTOTAL | | 0 | 0 | 0 | 30 | 0 | | |

| Project Name | Address | Office (s.f.) | Retail (s.f.) | Other* (s.f.) | Residential Units | Hotel Rooms | Approval Date | Site Plan Number** |
|---------------------------------------|--------------------|------------------|------------------|------------------|----------------------|----------------|------------------|-----------------------|
| SUBTOTAL | | 7,816,981 | 803,697 | 242,994 | 8,031 | 933 | | |
| <i>SINGLE-FAMILY HOUSES</i> | | | | | | | | |
| OUTSIDE PLANNING AREA | | | | | | | | |
| Honeysuckle Hills URD | 6122 LANGSTON BLVD | 0 | 0 | 0 | 3 | 0 | 02/22/2014 | URD |
| OUTSIDE PLANNING AREA SUBTOTAL | | 0 | 0 | 0 | 3 | 0 | | |
| SINGLE-FAMILY HOUSES SUBTOTAL | | 0 | 0 | 0 | 3 | 0 | | |
| ARLINGTON TOTAL | | 7,816,981 | 803,697 | 242,994 | 8,034 | 933 | | |

* Includes schools, health care facilities, recreation centers, fire houses, etc.

** Numbers listed refer to the site plan number. Other codes are as follows: B-R = By-right; FBC = Formed Based Code; PROF = Proffer; UP = Use Permit; URD = Unified Residential Development; UCMUD = Unified Commercial Mixed Use Development; Sp. Ag. = Special Agreement. ADU = Accessory Dwelling Unit.

Projects Under Construction

Arlington County, Virginia

Through 12/31/2022

| Project Name | Address | Office (s.f.) | Retail (s.f.) | Other* (s.f.) | Residential Units | Hotel Rooms | Start Date | Site Plan Number** |
|---|--------------------|------------------|------------------|------------------|----------------------|----------------|---------------|-----------------------|
| ROSSLYN | | | | | | | | |
| Rosslyn Holiday Inn | 1900 FORT MYER DR | 0 | 14,412 | 37,417 | 502 | 375 | 06/01/2022 | 79 |
| 1201 N Quinn St | 1201 N QUINN ST | 0 | 0 | 0 | 12 | 0 | 05/02/2018 | |
| ROSSLYN SUBTOTAL | | 0 | 14,412 | 37,417 | 514 | 375 | | |
| COURT HOUSE | | | | | | | | |
| The Commodore (Courthouse Landmark Block) | 2050 WILSON BLVD | 0 | 17,000 | 0 | 423 | 0 | 06/22/2022 | 457 |
| COURT HOUSE SUBTOTAL | | 0 | 17,000 | 0 | 423 | 0 | | |
| CLARENDON | | | | | | | | |
| Clarendon West (West Block) | 1200 N HUDSON ST | 0 | | 0 | 267 | 0 | 06/21/2022 | 438 |
| CLARENDON SUBTOTAL | | 0 | | 0 | 267 | 0 | | |
| VIRGINIA SQUARE | | | | | | | | |
| 3901 Fairfax Drive | 3901 FAIRFAX DR | 178,131 | 16,185 | 7,311 | 0 | 0 | 11/22/2022 | 386 |
| VIRGINIA SQUARE SUBTOTAL | | 178,131 | 16,185 | 7,311 | 0 | 0 | | |
| BALLSTON | | | | | | | | |
| Ballston Station/Ballston Central United Methodist Church | 4223 N FAIRFAX DR | 0 | 0 | 23,499 | 144 | 0 | 08/01/2022 | 443 |
| Harris Teeter Site | 600 N GLEBE RD | 0 | 77,575 | 0 | 732 | 0 | 01/28/2022 | 315 |
| BALLSTON SUBTOTAL | | 0 | 77,575 | 23,499 | 876 | 0 | | |
| CRYSTAL CITY | | | | | | | | |
| Rosenthal Porsche | 3150 RICHMOND HWY | 0 | 11,434 | 0 | 0 | 0 | 08/07/2022 | |
| Crystal City Water Park | 1601 CRYSTAL DR | 0 | 0 | 18,602 | 0 | 0 | 05/18/2022 | |
| 1900 Crystal Drive | 1900 CRYSTAL DRIVE | 0 | 39,890 | 0 | 811 | 0 | 03/10/2022 | 56 & 421 |
| CRYSTAL CITY SUBTOTAL | | 0 | 51,324 | 18,602 | 811 | 0 | | |
| PENTAGON CITY | | | | | | | | |
| The Milton (Pentagon Centre PDSP FSP) | 719 15TH ST S | 0 | 15,541 | 0 | 253 | 0 | 08/04/2021 | 297 |
| Metropolitan Park Phases 6 & 7/8 | 1400 S EADS ST | 2,082,566 | 69,545 | 0 | 0 | 0 | 01/21/2021 | 105-9 |

| Project Name | Address | Office (s.f.) | Retail (s.f.) | Other* (s.f.) | Residential Units | Hotel Rooms | Start Date | Site Plan Number** |
|--|------------------------|------------------|------------------|------------------|----------------------|----------------|---------------|-----------------------|
| PENTAGON CITY SUBTOTAL | | 2,082,566 | 85,086 | 0 | 253 | 0 | | |
| COLUMBIA PIKE | | | | | | | | |
| Arlington View Terrace | 1420 S. ROLFE ST | 0 | 0 | 0 | 77 | 0 | 03/31/2022 | FBC |
| Westmont Shopping Center | 3233 COLUMBIA PIKE | 0 | 23,000 | 0 | 250 | 0 | 01/12/2022 | FBC |
| 1010 S Taylor Ct | 1010 S TAYLOR CT | 0 | 0 | 0 | 17 | 0 | 01/14/2021 | B-R |
| COLUMBIA PIKE SUBTOTAL | | 0 | 23,000 | 0 | 344 | 0 | | |
| SHIRLINGTON | | | | | | | | |
| WETA | 3939 CAMPBELL AVE | 17,150 | 0 | 0 | 0 | 0 | 08/29/2022 | 106 |
| SHIRLINGTON SUBTOTAL | | 17,150 | 0 | 0 | 0 | 0 | | |
| LANGSTON BOULEVARD | | | | | | | | |
| Fire Station No. 8 | 4845 LANGSTON BLVD | 0 | 0 | 2,023 | 0 | 0 | 08/17/2022 | |
| 4770 Langston Blvd | 4770 LANGSTON BLVD | 0 | 0 | 0 | 1 | 0 | 01/14/2021 | |
| LANGSTON BOULEVARD SUBTOTAL | | 0 | 0 | 2,023 | 1 | 0 | | |
| GREEN VALLEY | | | | | | | | |
| 2019 S Kenmore St | 2019 S KENMORE ST | 0 | 0 | 0 | 4 | 0 | 08/26/2022 | |
| St. Timothy and St. Anthonasius Coptic Orthodox Church | 2640 SHIRLINGTON RD | 0 | 0 | 103,546 | 0 | 0 | 02/01/2022 | |
| GREEN VALLEY SUBTOTAL | | 0 | 0 | 103,546 | 4 | 0 | | |
| OUTSIDE PLANNING AREA | | | | | | | | |
| 2101/2103 S Monroe St | 2101 S MONROE ST | 0 | 0 | 0 | 2 | 0 | 10/28/2022 | |
| Vernon Street Duplex | 1201 N VERNON ST | 0 | 0 | 0 | 2 | 0 | 10/20/2022 | 461 |
| 1122 N Kirkwood Road - Washington Blvd at Kirkwood | 1122 N KIRKWOOD RD | 0 | 0 | 0 | 255 | 0 | 10/12/2021 | 450 |
| Virginia Hospital Center Expansion | 1625 N GEORGE MASON DR | 0 | 0 | 239,086 | 0 | 0 | 07/15/2021 | 177 |
| 2134 S Nelson St | 2134 S NELSON ST | 0 | 0 | 0 | 3 | 0 | 09/12/2019 | |
| OUTSIDE PLANNING AREA SUBTOTAL | | 0 | 0 | 239,086 | 262 | 0 | | |
| SUBTOTAL | | 2,277,847 | 284,582 | 431,484 | 3,755 | 375 | | |
| SINGLE-FAMILY HOUSES | | | | | | | | |
| COURT HOUSE | | | | | | | | |
| 2503 16th St N | 2503 16th ST N | 0 | 0 | 0 | 1 | 0 | 10/19/2022 | |
| 1630 N Barton St | 1630 N BARTON ST | 0 | 0 | 0 | 1 | 0 | 05/06/2022 | |
| 1608 N Cleveland St | 1608 N CLEVELAND ST | 0 | 0 | 0 | 1 | 0 | 04/01/2022 | |
| 1730 N Wayne St | 1730 N WAYNE ST | 0 | 0 | 0 | 1 | 0 | 02/24/2022 | |
| COURT HOUSE SUBTOTAL | | 0 | 0 | 0 | 4 | 0 | | |

| Project Name | Address | Office (s.f.) | Retail (s.f.) | Other* (s.f.) | Residential Units | Hotel Rooms | Start Date | Site Plan Number** |
|---------------------------------|--------------------------|------------------|------------------|------------------|----------------------|----------------|---------------|-----------------------|
| CLARENDON | | | | | | | | |
| 3128 Key Blvd (AD) | 3128 KEY BLVD | 0 | 0 | 0 | 1 | 0 | 10/05/2022 | |
| 804 N Highland St | 804 N HIGHLAND ST | 0 | 0 | 0 | 1 | 0 | 04/25/2022 | |
| 2911 7th St N | 2911 7TH ST N | 0 | 0 | 0 | 1 | 0 | 04/18/2022 | |
| 727 N Highland St (AD) | 727 N HIGHLAND ST | 0 | 0 | 0 | 1 | 0 | 03/29/2022 | |
| 904 N Irving St | 904 N IRVING ST | 0 | 0 | 0 | 1 | 0 | 02/18/2022 | |
| 807 N Jackson St | 807 N JACKSON ST | 0 | 0 | 0 | 1 | 0 | 10/12/2021 | |
| 1308 N Irving St | 1308 N IRVING ST | 0 | 0 | 0 | 1 | 0 | 09/27/2021 | |
| 815 N Garfield St (AD) | 815 N GARFIELD ST | 0 | 0 | 0 | 1 | 0 | 08/18/2021 | |
| CLARENDON SUBTOTAL | | 0 | 0 | 0 | 8 | 0 | | |
| VIRGINIA SQUARE | | | | | | | | |
| 650 N Jackson St | 650 N JACKSON ST | 0 | 0 | 0 | 1 | 0 | 09/27/2022 | |
| 3336 Wilson Blvd | 3336 WILSON BLVD | 0 | 0 | 0 | 1 | 0 | 12/05/2021 | |
| VIRGINIA SQUARE SUBTOTAL | | 0 | 0 | 0 | 2 | 0 | | |
| BALLSTON | | | | | | | | |
| 735 N George Mason Dr | 735 N GEORGE MASON DR | 0 | 0 | 0 | 1 | 0 | 11/09/2022 | |
| 620 N Vermont St | 620 N VERMONT ST | 0 | 0 | 0 | 1 | 0 | 09/20/2022 | |
| 4611 N Carlin Springs Rd | 4611 N CARLIN SPRINGS RD | 0 | 0 | 0 | 1 | 0 | 03/28/2022 | |
| 829 N Buchanan St (AD) | 829 N BUCHANAN ST | 0 | 0 | 0 | 1 | 0 | 11/30/2021 | |
| BALLSTON SUBTOTAL | | 0 | 0 | 0 | 4 | 0 | | |
| COLUMBIA PIKE | | | | | | | | |
| 820 S Oakland St | 820 S OAKLAND ST | 0 | 0 | 0 | 1 | 0 | 12/22/2022 | |
| 3925 8th St S | 3925 8th ST S | 0 | 0 | 0 | 1 | 0 | 11/23/2022 | |
| 1118 S Emerson St | 1118 S EMERSON ST | 0 | 0 | 0 | 1 | 0 | 11/01/2022 | |
| 3903 9th St S | 3903 9TH ST S | 0 | 0 | 0 | 1 | 0 | 10/12/2022 | |
| 4504 6Th St S | 4504 6TH ST S | 0 | 0 | 0 | 1 | 0 | 08/30/2022 | |
| 4318 8Th St S | 4318 8TH ST S | 0 | 0 | 0 | 1 | 0 | 08/04/2022 | |
| 5618 5th St S (AD) | 5618 5th ST S | 0 | 0 | 0 | 1 | 0 | 05/31/2022 | |
| 619 S Quincy St (AD) | 619 S QUINCY ST | 0 | 0 | 0 | 1 | 0 | 04/27/2022 | |
| 1417 S Nelson St | 1417 S NELSON ST | 0 | 0 | 0 | 1 | 0 | 03/01/2022 | |
| 1212 S Irving St | 1212 S IRVING ST | 0 | 0 | 0 | 1 | 0 | 12/07/2021 | |
| 4029 9th St S | 4029 9TH ST S | 0 | 0 | 0 | 1 | 0 | 11/04/2021 | |
| 904 S Randolph St | 904 S RANDOLPH ST | 0 | 0 | 0 | 1 | 0 | 10/06/2021 | |
| 4025 9th St S | 4025 9TH ST S | 0 | 0 | 0 | 1 | 0 | 08/26/2021 | |
| 1411 S Nelson St | 1411 S NELSON ST | 0 | 0 | 0 | 1 | 0 | 08/13/2021 | |
| 3813 13th St S (AD) | 3813 13th ST S | 0 | 0 | 0 | 1 | 0 | 02/15/2021 | |
| 620 S Veitch St | 620 S VEITCH ST | 0 | 0 | 0 | 1 | 0 | 08/05/2020 | |
| 620 S Veitch St (AD) | 620 S VEITCH ST | 0 | 0 | 0 | 1 | 0 | 08/05/2020 | |
| COLUMBIA PIKE SUBTOTAL | | 0 | 0 | 0 | 17 | 0 | | |
| LANGSTON BOULEVARD | | | | | | | | |
| 4012 Vacation Ln | 4012 VACATION LN | 0 | 0 | 0 | 1 | 0 | 09/02/2022 | |
| 1821 N Jackson St | 1821 N JACKSON ST | 0 | 0 | 0 | 1 | 0 | 03/24/2022 | |
| 2134 N Stafford St | 2134 N STAFFORD ST | 0 | 0 | 0 | 1 | 0 | 01/30/2022 | |
| 5601 24Th St N | 5601 24TH ST N | 0 | 0 | 0 | 1 | 0 | 11/16/2021 | |

| Project Name | Address | Office (s.f.) | Retail (s.f.) | Other* (s.f.) | Residential Units | Hotel Rooms | Start Date | Site Plan Number** |
|------------------------------------|------------------|------------------|------------------|------------------|----------------------|----------------|---------------|-----------------------|
| 3504 21st Ave N (AD) | 3504 21st AVE N | 0 | 0 | 0 | 1 | 0 | 06/30/2021 | |
| 2211 Military Rd | 2211 MILITARY RD | 0 | 0 | 0 | 1 | 0 | 08/25/2020 | |
| LANGSTON BOULEVARD SUBTOTAL | | 0 | 0 | 0 | 6 | 0 | | |

OUTSIDE PLANNING AREA

| | | | | | | | | |
|--------------------------|----------------------|---|---|---|---|---|------------|--|
| 3800 26th St N | 3800 26th ST N | 0 | 0 | 0 | 1 | 0 | 12/22/2022 | |
| 5213 25th Rd N | 5213 25th RD N | 0 | 0 | 0 | 1 | 0 | 12/22/2022 | |
| 5231 32nd St N | 5231 32nd ST N | 0 | 0 | 0 | 1 | 0 | 12/22/2022 | |
| 6101 35th St N | 6101 35TH ST N | 0 | 0 | 0 | 1 | 0 | 12/21/2022 | |
| 3614 27th St N | 3614 27th ST N | 0 | 0 | 0 | 1 | 0 | 12/20/2022 | |
| 5208 Washington Blvd | 5208 WASHINGTON BLVD | 0 | 0 | 0 | 1 | 0 | 12/20/2022 | |
| 5117 33rd St N | 5117 33rd ST N | 0 | 0 | 0 | 1 | 0 | 12/19/2022 | |
| 848 N Madison St | 848 N MADISON ST | 0 | 0 | 0 | 1 | 0 | 12/19/2022 | |
| 3525 N Ohio St | 3525 N OHIO ST | 0 | 0 | 0 | 1 | 0 | 12/14/2022 | |
| 919 N Edgewood St | 919 N EDGEWOOD ST | 0 | 0 | 0 | 1 | 0 | 12/13/2022 | |
| 1075 N Ohio St | 1075 N OHIO ST | 0 | 0 | 0 | 1 | 0 | 12/08/2022 | |
| 3114 1st St N | 3114 1st ST N | 0 | 0 | 0 | 1 | 0 | 12/06/2022 | |
| 115 N Irving St | 115 N IRVING ST | 0 | 0 | 0 | 1 | 0 | 12/05/2022 | |
| 5119 Yorktown Blvd | 5119 YORKTOWN BLVD | 0 | 0 | 0 | 1 | 0 | 12/05/2022 | |
| 860 N Madison St | 860 N MADISON ST | 0 | 0 | 0 | 1 | 0 | 11/30/2022 | |
| 1150 N Ivanhoe St | 1150 N IVANHOE ST | 0 | 0 | 0 | 1 | 0 | 11/29/2022 | |
| 1154 N Ivanhoe St | 1154 N IVANHOE ST | 0 | 0 | 0 | 1 | 0 | 11/29/2022 | |
| 852 N Madison St | 852 N MADISON ST | 0 | 0 | 0 | 1 | 0 | 11/29/2022 | |
| 1740 N Culpeper St (AD) | 1740 N CULPEPER ST | 0 | 0 | 0 | 1 | 0 | 11/28/2022 | |
| 5205 2nd St N (AD) | 5205 2nd ST N | 0 | 0 | 0 | 1 | 0 | 11/28/2022 | |
| 2545 N Ridgeview Rd (AD) | 2545 N RIDGEVIEW RD | 0 | 0 | 0 | 1 | 0 | 11/22/2022 | |
| 5517 Yorktown Blvd | 5517 YORKTOWN BLVD | 0 | 0 | 0 | 1 | 0 | 11/21/2022 | |
| 3508 N Pocomoke St | 3508 N POCOMOKE ST | 0 | 0 | 0 | 1 | 0 | 11/14/2022 | |
| 5429 19th St N | 5429 19th ST N | 0 | 0 | 0 | 1 | 0 | 11/13/2022 | |
| 1305 N Tuckahoe St | 1305 N TUCKAHOE ST | 0 | 0 | 0 | 1 | 0 | 11/11/2022 | |
| 5130 26th Rd N | 5130 26TH RD N | 0 | 0 | 0 | 1 | 0 | 11/10/2022 | |
| 4311 15th St N | 4311 15TH ST N | 0 | 0 | 0 | 1 | 0 | 11/07/2022 | |
| 2232 N Quantico St | 2232 N QUANTICO ST | 0 | 0 | 0 | 1 | 0 | 10/31/2022 | |
| 5629 7th St N (AD) | 5629 7th ST N | 0 | 0 | 0 | 1 | 0 | 10/31/2022 | |
| 6704 31st St N | 6704 31ST ST N | 0 | 0 | 0 | 1 | 0 | 10/28/2022 | |
| 4612 2nd St S (AD) | 4612 2nd ST S | 0 | 0 | 0 | 1 | 0 | 10/25/2022 | |
| 5409 32nd St N | 5409 32nd ST N | 0 | 0 | 0 | 1 | 0 | 10/25/2022 | |
| 5607 32nd St N | 5607 32nd ST N | 0 | 0 | 0 | 1 | 0 | 10/21/2022 | |
| 3024 N Underwood St | 3024 N UNDERWOOD ST | 0 | 0 | 0 | 1 | 0 | 10/17/2022 | |
| 6300 29th St N | 6300 29th ST N | 0 | 0 | 0 | 1 | 0 | 10/11/2022 | |
| 4192 39th St N | 4192 39th ST N | 0 | 0 | 0 | 1 | 0 | 10/10/2022 | |
| 1244 N Utah St | 1244 N UTAH ST | 0 | 0 | 0 | 1 | 0 | 10/06/2022 | |
| 5935 16th St N | 5935 16TH ST N | 0 | 0 | 0 | 1 | 0 | 10/03/2022 | |
| 1005 17th St S | 1005 17TH ST S | 0 | 0 | 0 | 1 | 0 | 09/30/2022 | |
| 1018 19th St S | 1018 19TH ST S | 0 | 0 | 0 | 1 | 0 | 09/30/2022 | |
| 5407 36th St N | 5407 36TH ST N | 0 | 0 | 0 | 1 | 0 | 09/27/2022 | |
| 2009 S Randolph St | 2009 S RANDOLPH ST | 0 | 0 | 0 | 1 | 0 | 09/26/2022 | |
| 1940 N Roosevelt St | 1940 N ROOSEVELT ST | 0 | 0 | 0 | 1 | 0 | 09/22/2022 | |
| 2710 1st Rd S | 2710 1ST RD S | 0 | 0 | 0 | 1 | 0 | 09/22/2022 | |
| 5706 4th St N | 5706 4TH ST N | 0 | 0 | 0 | 1 | 0 | 09/22/2022 | |
| 2639 N Rockingham St | 2639 N ROCKINGHAM ST | 0 | 0 | 0 | 1 | 0 | 09/20/2022 | |

| Project Name | Address | Office (s.f.) | Retail (s.f.) | Other* (s.f.) | Residential Units | Hotel Rooms | Start Date | Site Plan Number** |
|--------------------------|----------------------|--------------------------|--------------------------|--------------------------|------------------------------|------------------------|-----------------------|-------------------------------|
| 856 N Madison St | 856 N MADISON ST | 0 | 0 | 0 | 1 | 0 | 09/20/2022 | |
| 5402 31st St N | 5402 31ST ST N | 0 | 0 | 0 | 1 | 0 | 09/19/2022 | |
| 5421 4th St S | 5421 4TH ST S | 0 | 0 | 0 | 1 | 0 | 09/19/2022 | |
| 6404 Washington Blvd | 6404 WASHINGTON BLVD | 0 | 0 | 0 | 1 | 0 | 09/19/2022 | |
| 1813 N Herndon St | 1813 N HERNDON ST | 0 | 0 | 0 | 1 | 0 | 09/12/2022 | |
| 2217 N Quincy St | 2217 N QUINCY ST | 0 | 0 | 0 | 1 | 0 | 09/02/2022 | |
| 252 N Bryan St | 252 N BRYAN ST | 0 | 0 | 0 | 1 | 0 | 09/01/2022 | |
| 2722 1st Rd S | 2722 1ST RD S | 0 | 0 | 0 | 1 | 0 | 08/30/2022 | |
| 3380 N Dickerson St | 3380 N DICKERSON ST | 0 | 0 | 0 | 1 | 0 | 08/30/2022 | |
| 3400 N Thomas St | 3400 N THOMAS ST | 0 | 0 | 0 | 1 | 0 | 08/30/2022 | |
| 2407 2nd St S | 2407 2ND ST S | 0 | 0 | 0 | 1 | 0 | 08/25/2022 | |
| 2600 3rd St N | 2600 3RD ST N | 0 | 0 | 0 | 1 | 0 | 08/24/2022 | |
| 2728 N Edison St | 2728 N EDISON ST | 0 | 0 | 0 | 1 | 0 | 08/24/2022 | |
| 866 N Lebanon St | 866 N LEBANON ST | 0 | 0 | 0 | 1 | 0 | 08/24/2022 | |
| 4912 17th St N | 4912 17TH ST N | 0 | 0 | 0 | 1 | 0 | 08/23/2022 | |
| 2620 N Powhatan St | 2620 N POWHATAN ST | 0 | 0 | 0 | 1 | 0 | 08/19/2022 | |
| 2618 S Joyce St | 2618 S JOYCE ST | 0 | 0 | 0 | 1 | 0 | 08/18/2022 | |
| 2785 N Wakefield St | 2785 N WAKEFIELD ST | 0 | 0 | 0 | 1 | 0 | 08/18/2022 | |
| 6305 36th St N | 6305 36TH ST N | 0 | 0 | 0 | 1 | 0 | 08/17/2022 | |
| 5027 30th St N | 5027 30TH ST N | 0 | 0 | 0 | 1 | 0 | 08/16/2022 | |
| 6044 26th Rd N | 6044 26TH RD N | 0 | 0 | 0 | 1 | 0 | 08/15/2022 | |
| 5828 Little Falls Rd | 5828 LITTLE FALLS RD | 0 | 0 | 0 | 1 | 0 | 08/11/2022 | |
| 1119 N Illinois St | 1119 N ILLINOIS ST | 0 | 0 | 0 | 1 | 0 | 08/10/2022 | |
| 1614 N Kenilworth St | 1614 N KENILWORTH ST | 0 | 0 | 0 | 1 | 0 | 08/10/2022 | |
| 3925 N Woodstock St | 3925 N WOODSTOCK ST | 0 | 0 | 0 | 1 | 0 | 08/10/2022 | |
| 5622 33rd St N | 5622 33RD ST N | 0 | 0 | 0 | 1 | 0 | 08/10/2022 | |
| 3401 N Peary St | 3401 N PEARY ST | 0 | 0 | 0 | 1 | 0 | 08/09/2022 | |
| 4007 N Stuart St | 4007 N STUART ST | 0 | 0 | 0 | 1 | 0 | 08/09/2022 | |
| 6072 26th St N | 6072 26TH ST N | 0 | 0 | 0 | 1 | 0 | 08/09/2022 | |
| 5120 25th Pl N | 5120 25TH PL N | 0 | 0 | 0 | 1 | 0 | 08/08/2022 | |
| 5425 22nd Rd N | 5425 22ND RD N | 0 | 0 | 0 | 1 | 0 | 08/08/2022 | |
| 1609 N Stafford St | 1609 N STAFFORD ST | 0 | 0 | 0 | 1 | 0 | 08/05/2022 | |
| 2744 N Wyoming St | 2744 N WYOMING ST | 0 | 0 | 0 | 1 | 0 | 08/04/2022 | |
| 1917 N Utah St | 1917 N UTAH ST | 0 | 0 | 0 | 1 | 0 | 07/28/2022 | |
| 3727 25th St N | 3727 25TH ST N | 0 | 0 | 0 | 1 | 0 | 07/26/2022 | |
| 1400 N Harrison St | 1400 N HARRISON ST | 0 | 0 | 0 | 1 | 0 | 07/22/2022 | |
| 3341 N Randolph St | 3341 N RANDOLPH ST | 0 | 0 | 0 | 1 | 0 | 07/22/2022 | |
| 3409 N Buchanan St | 3409 N BUCHANAN ST | 0 | 0 | 0 | 1 | 0 | 07/22/2022 | |
| 3601 N Potomac St | 3601 N POTOMAC ST | 0 | 0 | 0 | 1 | 0 | 07/21/2022 | |
| 6258 12th St N | 6258 12TH ST N | 0 | 0 | 0 | 1 | 0 | 07/21/2022 | |
| 4408 20th Rd N | 4408 20TH RD N | 0 | 0 | 0 | 1 | 0 | 07/19/2022 | |
| 2620 N Ohio St | 2620 N OHIO ST | 0 | 0 | 0 | 1 | 0 | 07/18/2022 | |
| 205 N Edgewood St | 205 N EDGEWOOD ST | 0 | 0 | 0 | 1 | 0 | 07/15/2022 | |
| 3716 N Nelson St | 3716 N NELSON ST | 0 | 0 | 0 | 1 | 0 | 07/14/2022 | |
| 2424 N Nelson St | 2424 N NELSON ST | 0 | 0 | 0 | 1 | 0 | 07/12/2022 | |
| 414 N Monroe St | 414 N MONROE ST | 0 | 0 | 0 | 1 | 0 | 07/12/2022 | |
| 806 N Greenbrier St (AD) | 806 N GREENBRIER ST | 0 | 0 | 0 | 1 | 0 | 06/29/2022 | |
| 3121 1st Rd N (AD) | 3121 1st RD N | 0 | 0 | 0 | 1 | 0 | 06/22/2022 | |
| 4283 38th St N | 4283 38TH ST N | 0 | 0 | 0 | 1 | 0 | 06/22/2022 | |
| 6023 21st St N | 6023 21ST ST N | 0 | 0 | 0 | 1 | 0 | 06/14/2022 | |
| 643 23rd St S | 643 23RD ST S | 0 | 0 | 0 | 1 | 0 | 06/13/2022 | |
| 4730 19th St N (AD) | 4730 19th ST N | 0 | 0 | 0 | 1 | 0 | 06/03/2022 | |

| Project Name | Address | Office (s.f.) | Retail (s.f.) | Other* (s.f.) | Residential Units | Hotel Rooms | Start Date | Site Plan Number** |
|------------------------------|------------------------|--------------------------|--------------------------|--------------------------|------------------------------|------------------------|-----------------------|-------------------------------|
| 5543 15th St N | 5543 15TH ST N | 0 | 0 | 0 | 1 | 0 | 06/03/2022 | |
| 5119 25th Rd N | 5119 25TH RD N | 0 | 0 | 0 | 1 | 0 | 05/23/2022 | |
| 2628 N Potomac St | 2628 N POTOMAC ST | 0 | 0 | 0 | 1 | 0 | 05/20/2022 | |
| 3205 23rd St N | 3205 23RD ST N | 0 | 0 | 0 | 1 | 0 | 05/20/2022 | |
| 4940 Little Falls Rd | 4940 LITTLE FALLS RD | 0 | 0 | 0 | 1 | 0 | 05/13/2022 | |
| 2009 N Kenilworth St | 2009 N KENILWORTH ST | 0 | 0 | 0 | 1 | 0 | 05/10/2022 | |
| 927 N Barton St | 927 N BARTON ST | 0 | 0 | 0 | 1 | 0 | 05/06/2022 | |
| 3611 Roberts Ln | 3611 ROBERTS LN | 0 | 0 | 0 | 1 | 0 | 05/05/2022 | |
| 6623 32nd St N | 6623 32ND ST N | 0 | 0 | 0 | 1 | 0 | 05/02/2022 | |
| 3011 19th St S | 3011 19TH ST S | 0 | 0 | 0 | 1 | 0 | 04/29/2022 | |
| 3452 N Emerson St | 3452 N EMERSON ST | 0 | 0 | 0 | 1 | 0 | 04/29/2022 | |
| 1127 28th St S | 1127 28TH ST S | 0 | 0 | 0 | 1 | 0 | 04/28/2022 | |
| 2727 S Lang St | 2727 S LANG ST | 0 | 0 | 0 | 1 | 0 | 04/28/2022 | |
| 4407 16th St N | 4407 16TH ST N | 0 | 0 | 0 | 1 | 0 | 04/18/2022 | |
| 2925 1st St N | 2925 1ST ST N | 0 | 0 | 0 | 1 | 0 | 04/13/2022 | |
| 4950 Little Falls Rd | 4950 LITTLE FALLS RD | 0 | 0 | 0 | 1 | 0 | 04/13/2022 | |
| 2320 S Fern St | 2320 S FERN ST | 0 | 0 | 0 | 1 | 0 | 04/11/2022 | |
| 1604 Patrick Henry Dr | 1604 PATRICK HENRY DR | 0 | 0 | 0 | 1 | 0 | 04/07/2022 | |
| 6020 26th Rd N | 6020 26TH RD N | 0 | 0 | 0 | 1 | 0 | 04/01/2022 | |
| 5732 2nd St S (AD) | 5732 2ND ST S | 0 | 0 | 0 | 1 | 0 | 03/29/2022 | |
| 3563 N Abingdon St | 3563 N ABINGDON ST | 0 | 0 | 0 | 1 | 0 | 03/23/2022 | |
| 1212 N Utah St | 1212 N UTAH ST | 0 | 0 | 0 | 1 | 0 | 03/14/2022 | |
| 4515 37th St N | 4515 37TH ST N | 0 | 0 | 0 | 1 | 0 | 03/14/2022 | |
| 4515 37th St N | 4515 37TH ST N | 0 | 0 | 0 | 1 | 0 | 03/14/2022 | |
| 412 N Cleveland St | 412 N CLEVELAND ST | 0 | 0 | 0 | 1 | 0 | 03/10/2022 | |
| 412 N Cleveland St | 412 N CLEVELAND ST | 0 | 0 | 0 | 1 | 0 | 03/10/2022 | |
| 2326 N Jackson St | 2326 N JACKSON ST | 0 | 0 | 0 | 1 | 0 | 03/04/2022 | |
| 6047 19th Rd N | 6047 19TH RD N | 0 | 0 | 0 | 1 | 0 | 02/28/2022 | |
| 1629 N Stafford St | 1629 N STAFFORD ST | 0 | 0 | 0 | 1 | 0 | 02/25/2022 | |
| 1204 N Sycamore St | 1204 N SYCAMORE ST | 0 | 0 | 0 | 1 | 0 | 02/16/2022 | |
| 1215 N Buchanan St | 1215 N BUCHANAN ST | 0 | 0 | 0 | 1 | 0 | 02/16/2022 | |
| 1504 N Powhatan St | 1504 N POWHATAN ST | 0 | 0 | 0 | 1 | 0 | 02/16/2022 | |
| 6033 Washington Blvd (AD) | 6033 WASHINGTON BLVD | 0 | 0 | 0 | 1 | 0 | 02/16/2022 | |
| 2300 N Richmond St | 2300 N RICHMOND ST | 0 | 0 | 0 | 1 | 0 | 02/04/2022 | |
| 1829 N Columbus St | 1829 N COLUMBUS ST | 0 | 0 | 0 | 1 | 0 | 02/03/2022 | |
| 3547 N Valley St | 3547 N VALLEY ST | 0 | 0 | 0 | 1 | 0 | 02/03/2022 | |
| 6592 Williamsburg Blvd | 6592 WILLIAMSBURG BLVD | 0 | 0 | 0 | 1 | 0 | 02/01/2022 | |
| 1919 N Edison St (AD) | 1919 N EDISON ST | 0 | 0 | 0 | 1 | 0 | 01/26/2022 | |
| 1833 N Columbus St | 1833 N COLUMBUS ST | 0 | 0 | 0 | 1 | 0 | 01/25/2022 | |
| 6704 31st St N | 6704 31ST ST N | 0 | 0 | 0 | 1 | 0 | 01/24/2022 | |
| 2918 18th St S (AD) | 2918 18TH ST S | 0 | 0 | 0 | 1 | 0 | 01/19/2022 | |
| 3401 N Albemarle St | 3401 N ALBEMARLE ST | 0 | 0 | 0 | 1 | 0 | 01/18/2022 | |
| 4102 40th St N | 4102 40TH ST N | 0 | 0 | 0 | 1 | 0 | 01/14/2022 | |
| 4018 N Stafford St | 4018 N STAFFORD ST | 0 | 0 | 0 | 1 | 0 | 01/12/2022 | |
| 5604 4th St S | 5604 4TH ST S | 0 | 0 | 0 | 1 | 0 | 01/12/2022 | |
| 1937 N Utah St | 1937 N UTAH ST | 0 | 0 | 0 | 1 | 0 | 01/04/2022 | |
| 2810 3rd St N | 2810 3RD ST N | 0 | 0 | 0 | 1 | 0 | 12/16/2021 | |
| 135 N Edgewood St | 135 N EDGEWOOD ST | 0 | 0 | 0 | 1 | 0 | 12/13/2021 | |
| 12 N Edison St (AD) | 12 N EDISON ST | 0 | 0 | 0 | 1 | 0 | 12/09/2021 | |
| 2320 S Fern St (AD) | 2320 S FERN ST | 0 | 0 | 0 | 1 | 0 | 12/09/2021 | |
| 2539 N Ridgeview Rd | 2539 N RIDGEVIEW RD | 0 | 0 | 0 | 1 | 0 | 12/07/2021 | |

| Project Name | Address | Office (s.f.) | Retail (s.f.) | Other* (s.f.) | Residential Units | Hotel Rooms | Start Date | Site Plan Number** |
|--------------------------------|--------------------------------|--------------------------|--------------------------|--------------------------|------------------------------|------------------------|-----------------------|-------------------------------|
| 2545 N Ridgeview Rd | 2545 N RIDGEVIEW RD | 0 | 0 | 0 | 1 | 0 | 12/07/2021 | |
| 2222 N Vermont St | 2222 N VERMONT ST | 0 | 0 | 0 | 1 | 0 | 12/01/2021 | |
| 5155 19th Rd N | 5155 19TH RD N | 0 | 0 | 0 | 1 | 0 | 11/24/2021 | |
| 4830 33rd Rd N | 4830 33RD RD N | 0 | 0 | 0 | 1 | 0 | 11/21/2021 | |
| 3812 N Nelson St | 3812 N NELSON ST | 0 | 0 | 0 | 1 | 0 | 11/16/2021 | |
| 3510 Lorcom Ln | 3510 LORCOM LN | 0 | 0 | 0 | 1 | 0 | 11/12/2021 | |
| 2727 N George Mason Dr | 2727 N GEORGE MASON DR | 0 | 0 | 0 | 1 | 0 | 11/10/2021 | |
| 1718 N Monroe St | 1718 N MONROE ST | 0 | 0 | 0 | 1 | 0 | 11/05/2021 | |
| 4111 18th Rd N (AD) | 4111 18th RD N | 0 | 0 | 0 | 1 | 0 | 11/01/2021 | |
| 2508 N Lexington St | 2508 N LEXINGTON ST | 0 | 0 | 0 | 1 | 0 | 10/30/2021 | |
| 1244 N Utah St (AD) | 1244 N UTAH ST | 0 | 0 | 0 | 1 | 0 | 10/25/2021 | |
| 2251 N Burlington St (AD) | 2251 N BURLINGTON ST | 0 | 0 | 0 | 1 | 0 | 10/15/2021 | |
| 4620 36th St N | 4620 36TH ST N | 0 | 0 | 0 | 1 | 0 | 10/04/2021 | |
| 1007 18th St S | 1007 18TH ST S | 0 | 0 | 0 | 1 | 0 | 09/29/2021 | |
| 1809 N Cameron St | 1809 N CAMERON ST | 0 | 0 | 0 | 1 | 0 | 09/29/2021 | |
| 1904 N Harvard St | 1904 N HARVARD ST | 0 | 0 | 0 | 1 | 0 | 09/28/2021 | |
| 2549 N Ridgeview Rd | 2549 N RIDGEVIEW RD | 0 | 0 | 0 | 1 | 0 | 09/28/2021 | |
| 2008 S Quebec St (AD) | 2008 S QUEBEC ST | 0 | 0 | 0 | 1 | 0 | 09/23/2021 | |
| 1114 17th St S (AD) | 1114 17th ST S | 0 | 0 | 0 | 1 | 0 | 09/20/2021 | |
| 2810 S Arlington Ridge Rd (AD) | 2810 S ARLINGTON RIDGE RL (AD) | 0 | 0 | 0 | 1 | 0 | 09/16/2021 | |
| 5208 Washington Blvd (AD) | 5208 WASHINGTON BLVD (AD) | 0 | 0 | 0 | 1 | 0 | 09/15/2021 | |
| 2945 N Westmoreland St | 2945 N WESTMORELAND ST | 0 | 0 | 0 | 1 | 0 | 09/13/2021 | |
| 2521 3rd St S (AD) | 2521 3RD ST S | 0 | 0 | 0 | 1 | 0 | 09/10/2021 | |
| 201 N Jackson St | 201 N JACKSON ST | 0 | 0 | 0 | 1 | 0 | 08/31/2021 | |
| 2658 N Marcey Rd | 2658 N MARCEY RD | 0 | 0 | 0 | 1 | 0 | 08/25/2021 | |
| 5815 Little Falls Rd | 5815 LITTLE FALLS RD | 0 | 0 | 0 | 1 | 0 | 08/19/2021 | |
| 5645 8th St N | 5645 8TH ST N | 0 | 0 | 0 | 1 | 0 | 08/16/2021 | |
| 5301 18th St N | 5301 18TH ST N | 0 | 0 | 0 | 1 | 0 | 08/13/2021 | |
| 5303 18th St N | 5303 18TH ST N | 0 | 0 | 0 | 1 | 0 | 08/13/2021 | |
| 3306 N Peary St | 3306 N PEARY ST | 0 | 0 | 0 | 1 | 0 | 08/05/2021 | |
| 3524 N Valley St (AD) | 3524 N VALLEY ST | 0 | 0 | 0 | 1 | 0 | 07/09/2021 | |
| 3577 N Powhatan St | 3577 N POWHATAN ST | 0 | 0 | 0 | 1 | 0 | 06/15/2021 | |
| 2155 S Ives St (AD) | 2155 S IVES ST | 0 | 0 | 0 | 1 | 0 | 06/08/2021 | |
| 424 N Lincoln St (AD) | 424 N LINCOLN ST | 0 | 0 | 0 | 1 | 0 | 06/01/2021 | |
| 6606 31st St N | 6606 31ST ST N | 0 | 0 | 0 | 1 | 0 | 04/15/2021 | |
| 3308 N George Mason Dr | 3308 N GEORGE MASON DR | 0 | 0 | 0 | 1 | 0 | 04/13/2021 | |
| 5408 23rd St N | 5408 23RD ST N | 0 | 0 | 0 | 1 | 0 | 03/23/2021 | |
| 303 S Illinois St (AD) | 303 S ILLINOIS ST | 0 | 0 | 0 | 1 | 0 | 03/03/2021 | |
| 2437 N Utah St | 2437 N UTAH ST | 0 | 0 | 0 | 1 | 0 | 02/05/2021 | |
| 2906 20th St S (AD) | 2906 20th ST S | 0 | 0 | 0 | 1 | 0 | 02/01/2021 | |
| 5001 26th St N | 5001 26TH ST N | 0 | 0 | 0 | 1 | 0 | 01/26/2021 | |
| 6033 6th St N | 6033 6TH ST N | 0 | 0 | 0 | 1 | 0 | 01/13/2021 | |
| 5401 27th St N | 5401 27TH ST N | 0 | 0 | 0 | 1 | 0 | 12/13/2020 | |
| 2628 N Upland St | 2628 N UPLAND ST | 0 | 0 | 0 | 1 | 0 | 12/07/2020 | |
| 1202 N Columbus St (AD) | 1202 N COLUMBUS ST | 0 | 0 | 0 | 1 | 0 | 09/09/2020 | |
| 1523 N Randolph St | 1523 N RANDOLPH ST | 0 | 0 | 0 | 1 | 0 | 07/16/2020 | |
| 624 N Harrison St | 624 N HARRISON ST | 0 | 0 | 0 | 1 | 0 | 06/24/2020 | |
| 4645 4th St S | 4645 4TH ST S | 0 | 0 | 0 | 1 | 0 | 03/30/2020 | |
| 508 N Highland St | 508 N HIGHLAND ST | 0 | 0 | 0 | 1 | 0 | 12/23/2019 | |
| 3400 N Vermont St | 3400 N VERMONT ST | 0 | 0 | 0 | 1 | 0 | 02/11/2019 | |

| Project Name | Address | Office (s.f.) | Retail (s.f.) | Other* (s.f.) | Residential Units | Hotel Rooms | Start Date | Site Plan Number** |
|---------------------------------------|--------------------|------------------|------------------|------------------|----------------------|----------------|---------------|-----------------------|
| 919 N Cleveland St | 919 N CLEVELAND ST | 0 | 0 | 0 | 1 | 0 | 09/17/2018 | |
| OUTSIDE PLANNING AREA SUBTOTAL | | 0 | 0 | 0 | 200 | 0 | | |
| SINGLE-FAMILY HOUSES SUBTOTAL | | 0 | 0 | 0 | 241 | 0 | | |
| ARLINGTON TOTAL | | 2,277,847 | 284,582 | 431,484 | 3,996 | 375 | | |

* Includes schools, health care facilities, recreation centers, fire houses, etc.

** Numbers listed refer to the site plan number. Other codes are as follows: B-R = By-right; FBC = Formed Based Code; PROF = Proffer; UP = Use Permit; URD = Unified Residential Development; UCMUD = Unified Commercial Mixed Use Development; Sp. Ag. = Special Agreement. ADU = Accessory Dwelling Unit.

Completed Projects

Arlington County, Virginia

01/01/2022 Through 12/31/2022

| Project Name | Address | Office (s.f.) | Retail (s.f.) | Other* (s.f.) | Residential Units | Hotel Rooms | Completion Date | Site Plan Number** |
|--|----------------------|------------------|------------------|------------------|----------------------|----------------|--------------------|-----------------------|
| ROSSLYN | | | | | | | | |
| 1500 Arlington Blvd | 1500 ARLINGTON BLVD | 0 | 0 | 0 | 261 | 0 | 01/24/2022 | |
| ROSSLYN SUBTOTAL | | 0 | 0 | 0 | 261 | 0 | | |
| COURT HOUSE | | | | | | | | |
| 2000 Clarendon Blvd | 2000 CLARENDON BLVD | 0 | 1,921 | 0 | 90 | 0 | 10/24/2022 | 441 |
| N. Veitch Street Townhomes | 1731 N VEITCH ST | 0 | 0 | 0 | 7 | 0 | 04/06/2022 | 453 |
| COURT HOUSE SUBTOTAL | | 0 | 1,921 | 0 | 97 | 0 | | |
| CLARENDON | | | | | | | | |
| Clarendon Market Common Phase II Amendment | 2801 CLARENDON BLVD | 0 | 27,945 | 0 | 0 | 0 | 09/09/2022 | 339 |
| CLARENDON SUBTOTAL | | 0 | 27,945 | 0 | 0 | 0 | | |
| CRYSTAL CITY | | | | | | | | |
| Sage at National Landing | 480 11TH ST S | 0 | 10,653 | 0 | 306 | 0 | 12/14/2022 | 244 |
| CRYSTAL CITY SUBTOTAL | | 0 | 10,653 | 0 | 306 | 0 | | |
| GREEN VALLEY | | | | | | | | |
| The Townes at South Glebe II | 2220 S GLEBE RD | 0 | 0 | 0 | 10 | 0 | 06/13/2022 | |
| GREEN VALLEY SUBTOTAL | | 0 | 0 | 0 | 10 | 0 | | |
| OUTSIDE PLANNING AREA | | | | | | | | |
| Education Center | 1426 N QUINCY ST | 0 | 0 | 358,112 | 0 | 0 | 12/16/2022 | UP |
| The Cadence (Garden Units) | 4333 ARLINGTON BLVD | 0 | 0 | 0 | 97 | 0 | 11/30/2022 | 446 |
| American Legion/APAH | 3445 WASHINGTON BLVD | 0 | 0 | 6,750 | 160 | 0 | 07/28/2022 | 449 |
| The Townes at South Glebe I | 3036 20TH ST S | 0 | 0 | 0 | 6 | 0 | 03/15/2022 | B-R |
| OUTSIDE PLANNING AREA SUBTOTAL | | 0 | 0 | 364,862 | 263 | 0 | | |
| SUBTOTAL | | 0 | 40,519 | 364,862 | 937 | 0 | | |
| SINGLE-FAMILY HOUSES | | | | | | | | |
| COURT HOUSE | | | | | | | | |
| 1718 N Wayne St | 1718 N WAYNE ST | 0 | 0 | 0 | 1 | 0 | 11/07/2022 | |

| Project Name | Address | Office (s.f.) | Retail (s.f.) | Other* (s.f.) | Residential Units | Hotel Rooms | Completion Date | Site Plan Number** |
|------------------------------------|--------------------|------------------|------------------|------------------|----------------------|----------------|--------------------|-----------------------|
| 1730 N Wayne St (AD) | 1730 N WAYNE ST | 0 | 0 | 0 | 1 | 0 | 11/07/2022 | |
| 2607 Franklin Rd | 2607 FRANKLIN RD | 0 | 0 | 0 | 1 | 0 | 09/14/2022 | |
| 2423 16th St N | 2423 16TH ST N | 0 | 0 | 0 | 1 | 0 | 06/03/2022 | |
| COURT HOUSE SUBTOTAL | | 0 | 0 | 0 | 4 | 0 | | |
| CLARENDON | | | | | | | | |
| 1618 N Danville St | 1618 N DANVILLE ST | 0 | 0 | 0 | 1 | 0 | 09/21/2022 | |
| 2714 Franklin Rd | 2714 FRANKLIN RD | 0 | 0 | 0 | 1 | 0 | 09/21/2022 | |
| 1031 N Edgewood St | 1031 N EDGEWOOD ST | 0 | 0 | 0 | 1 | 0 | 01/07/2022 | |
| CLARENDON SUBTOTAL | | 0 | 0 | 0 | 3 | 0 | | |
| VIRGINIA SQUARE | | | | | | | | |
| 514 N Monroe St | 514 N MONROE ST | 0 | 0 | 0 | 1 | 0 | 12/22/2022 | |
| 520 N Monroe St | 520 N MONROE ST | 0 | 0 | 0 | 1 | 0 | 10/06/2022 | |
| VIRGINIA SQUARE SUBTOTAL | | 0 | 0 | 0 | 2 | 0 | | |
| COLUMBIA PIKE | | | | | | | | |
| 5430 5th St S (AD) | 5430 5TH ST S | 0 | 0 | 0 | 1 | 0 | 09/16/2022 | |
| 3312 6th St S (AD) | 3312 6TH ST S | 0 | 0 | 0 | 1 | 0 | 08/11/2022 | |
| 4316 6th St S | 4316 6TH ST S | 0 | 0 | 0 | 1 | 0 | 06/02/2022 | |
| 802 S Glebe Rd (AD) | 802 S GLEBE RD | 0 | 0 | 0 | 1 | 0 | 06/01/2022 | |
| 803 S Barton St | 803 S BARTON ST | 0 | 0 | 0 | 1 | 0 | 06/01/2022 | |
| 1001 S Rolfe St | 1001 S ROLFE ST | 0 | 0 | 0 | 1 | 0 | 04/11/2022 | |
| 2621 12th St S | 2621 12TH ST S | 0 | 0 | 0 | 1 | 0 | 03/14/2022 | |
| 4406 9th St S | 4406 9TH ST S | 0 | 0 | 0 | 1 | 0 | 03/09/2022 | |
| 1550 13th St S | 1550 13TH ST S | 0 | 0 | 0 | 1 | 0 | 03/04/2022 | |
| 3619 8th St S | 3619 8TH ST S | 0 | 0 | 0 | 1 | 0 | 03/03/2022 | |
| COLUMBIA PIKE SUBTOTAL | | 0 | 0 | 0 | 10 | 0 | | |
| LANGSTON BOULEVARD | | | | | | | | |
| 2537 N Granada St | 2537 N GRANADA ST | 0 | 0 | 0 | 1 | 0 | 06/13/2022 | |
| 1920 N Nelson St | 1920 N NELSON ST | 0 | 0 | 0 | 1 | 0 | 04/22/2022 | |
| LANGSTON BOULEVARD SUBTOTAL | | 0 | 0 | 0 | 2 | 0 | | |
| GREEN VALLEY | | | | | | | | |
| 2415 S Monroe St | 2415 S MONROE ST | 0 | 0 | 0 | 1 | 0 | 07/29/2022 | |
| GREEN VALLEY SUBTOTAL | | 0 | 0 | 0 | 1 | 0 | | |
| OUTSIDE PLANNING AREA | | | | | | | | |
| 6708 31st St N | 6708 31ST ST N | 0 | 0 | 0 | 1 | 0 | 12/29/2022 | |
| 4933 18Th St N | 4933 18TH ST N | 0 | 0 | 0 | 1 | 0 | 12/27/2022 | |
| 2506 N Quincy St | 2506 N QUINCY ST | 0 | 0 | 0 | 1 | 0 | 12/22/2022 | |
| 1700 N Potomac St | 1700 N POTOMAC ST | 0 | 0 | 0 | 1 | 0 | 12/20/2022 | |
| 719 21st St S | 719 21ST ST S | 0 | 0 | 0 | 1 | 0 | 12/20/2022 | |
| 4771 33rd St N | 4771 33RD ST N | 0 | 0 | 0 | 1 | 0 | 12/08/2022 | |
| 4902 14th St N | 4902 14TH ST N | 0 | 0 | 0 | 1 | 0 | 12/07/2022 | |

| Project Name | Address | Office (s.f.) | Retail (s.f.) | Other* (s.f.) | Residential Units | Hotel Rooms | Completion Date | Site Plan Number** |
|------------------------------|-----------------------|--------------------------|--------------------------|--------------------------|------------------------------|------------------------|----------------------------|-------------------------------|
| 1904 N Taylor St | 1904 N TAYLOR ST | 0 | 0 | 0 | 1 | 0 | 12/05/2022 | |
| 5331 32nd St N | 5331 32ND ST N | 0 | 0 | 0 | 1 | 0 | 12/01/2022 | |
| 3433 N Edison St | 3433 N EDISON ST | 0 | 0 | 0 | 1 | 0 | 11/29/2022 | |
| 815 N Cleveland St | 815 N CLEVELAND ST | 0 | 0 | 0 | 1 | 0 | 11/29/2022 | |
| 1811 N Harvard St | 1811 N HARVARD ST | 0 | 0 | 0 | 1 | 0 | 11/17/2022 | |
| 4414 Dittmar Rd | 4414 DITTMAR RD | 0 | 0 | 0 | 1 | 0 | 11/17/2022 | |
| 1819 N Lincoln St | 1819 N LINCOLN ST | 0 | 0 | 0 | 1 | 0 | 11/15/2022 | |
| 1413 N Lancaster St | 1413 N LANCASTER ST | 0 | 0 | 0 | 1 | 0 | 11/07/2022 | |
| 2133 Patrick Henry Dr | 2133 PATRICK HENRY DR | 0 | 0 | 0 | 1 | 0 | 11/07/2022 | |
| 5433 37th St N | 5433 37TH ST N | 0 | 0 | 0 | 1 | 0 | 11/07/2022 | |
| 1825 N Quesada St | 1825 N QUESADA ST | 0 | 0 | 0 | 1 | 0 | 11/02/2022 | |
| 509 N Hudson St | 509 N HUDSON ST | 0 | 0 | 0 | 1 | 0 | 11/02/2022 | |
| 904 21st St S (AD) | 904 21st ST S | 0 | 0 | 0 | 1 | 0 | 10/28/2022 | |
| 1817 N Tuckahoe St | 1817 N TUCKAHOE ST | 0 | 0 | 0 | 1 | 0 | 10/27/2022 | |
| 4914 25th Rd N | 4914 25TH RD N | 0 | 0 | 0 | 1 | 0 | 10/26/2022 | |
| 1912 N Hollister St | 1912 N HOLLISTER ST | 0 | 0 | 0 | 1 | 0 | 10/25/2022 | |
| 4150 41st St N | 4150 41ST ST N | 0 | 0 | 0 | 1 | 0 | 10/24/2022 | |
| 4112 N Richmond St | 4112 N RICHMOND ST | 0 | 0 | 0 | 1 | 0 | 10/20/2022 | |
| 4719 17th St N | 4719 17TH ST N | 0 | 0 | 0 | 1 | 0 | 10/20/2022 | |
| 904 21st St S | 904 21ST ST S | 0 | 0 | 0 | 1 | 0 | 10/20/2022 | |
| 926 16th St S | 926 16TH ST S | 0 | 0 | 0 | 1 | 0 | 10/18/2022 | |
| 813 N Cleveland St | 813 N CLEVELAND ST | 0 | 0 | 0 | 1 | 0 | 10/17/2022 | |
| 2621 N Quantico St | 2621 N QUANTICO ST | 0 | 0 | 0 | 1 | 0 | 10/12/2022 | |
| 3206 N Kensington St | 3206 N KENSINGTON ST | 0 | 0 | 0 | 1 | 0 | 10/12/2022 | |
| 6201 Little Falls Rd | 6201 LITTLE FALLS RD | 0 | 0 | 0 | 1 | 0 | 10/12/2022 | |
| 1126 17th St S | 1126 17TH ST S | 0 | 0 | 0 | 1 | 0 | 10/10/2022 | |
| 4734 34th St N | 4734 34TH ST N | 0 | 0 | 0 | 1 | 0 | 10/07/2022 | |
| 2442 N Lexington St | 2442 N LEXINGTON ST | 0 | 0 | 0 | 1 | 0 | 10/06/2022 | |
| 4605 26th St N | 4605 26TH ST N | 0 | 0 | 0 | 1 | 0 | 10/05/2022 | |
| 6008 27th St N | 6008 27TH ST N | 0 | 0 | 0 | 1 | 0 | 09/27/2022 | |
| 4501 32nd Rd N | 4501 32ND RD N | 0 | 0 | 0 | 1 | 0 | 09/22/2022 | |
| 1611 N Lexington St | 1611 N LEXINGTON ST | 0 | 0 | 0 | 1 | 0 | 09/15/2022 | |
| 4023 25th Rd N | 4023 25TH RD N | 0 | 0 | 0 | 1 | 0 | 09/15/2022 | |
| 4312 18th St N | 4312 18TH ST N | 0 | 0 | 0 | 1 | 0 | 09/14/2022 | |
| 5601 23rd St N | 5601 23RD ST N | 0 | 0 | 0 | 1 | 0 | 09/12/2022 | |
| 6549 36th St N | 6549 36TH ST N | 0 | 0 | 0 | 1 | 0 | 09/12/2022 | |
| 5031 34th Rd N | 5031 34TH RD N | 0 | 0 | 0 | 1 | 0 | 09/07/2022 | |
| 5216 Washington Blvd (AD) | 5216 WASHINGTON BLVD | 0 | 0 | 0 | 1 | 0 | 09/06/2022 | |
| 1210 N Vermont St | 1210 N VERMONT ST | 0 | 0 | 0 | 1 | 0 | 09/02/2022 | |
| 2806 1st Rd N | 2806 1ST RD N | 0 | 0 | 0 | 1 | 0 | 09/02/2022 | |
| 102 S Highland St | 102 S HIGHLAND ST | 0 | 0 | 0 | 1 | 0 | 09/01/2022 | |
| 5115 25th Rd N | 5115 25TH RD N | 0 | 0 | 0 | 1 | 0 | 09/01/2022 | |
| 6619 31st St N | 6619 31ST ST N | 0 | 0 | 0 | 1 | 0 | 08/30/2022 | |
| 5907 35th St N | 5907 35TH ST N | 0 | 0 | 0 | 1 | 0 | 08/29/2022 | |
| 3619 N Peary St | 3619 N PEARY ST | 0 | 0 | 0 | 1 | 0 | 08/24/2022 | |
| 2628 N Upshur St | 2628 N UPSHUR ST | 0 | 0 | 0 | 1 | 0 | 08/19/2022 | |
| 2909 18TH St S | 2909 18TH ST S | 0 | 0 | 0 | 1 | 0 | 08/18/2022 | |
| 4826 33rd Rd N | 4826 33RD RD N | 0 | 0 | 0 | 1 | 0 | 08/16/2022 | |
| 5678 18th Rd N | 5678 18TH RD N | 0 | 0 | 0 | 1 | 0 | 08/15/2022 | |
| 4006 24th Rd R | 4006 24TH RD R | 0 | 0 | 0 | 1 | 0 | 08/11/2022 | |
| 3882 30th St N | 3882 30TH ST N | 0 | 0 | 0 | 1 | 0 | 08/08/2022 | |

| Project Name | Address | Office (s.f.) | Retail (s.f.) | Other* (s.f.) | Residential Units | Hotel Rooms | Completion Date | Site Plan Number** |
|-------------------------|------------------------|--------------------------|--------------------------|--------------------------|------------------------------|------------------------|----------------------------|-------------------------------|
| 4101 35th St N | 4101 35TH ST N | 0 | 0 | 0 | 1 | 0 | 08/08/2022 | |
| 6026 22nd Rd N | 6026 22ND RD N | 0 | 0 | 0 | 1 | 0 | 08/08/2022 | |
| 5545 32nd St N | 5545 32ND ST N | 0 | 0 | 0 | 1 | 0 | 08/05/2022 | |
| 5516 23rd St N | 5516 23RD ST N | 0 | 0 | 0 | 1 | 0 | 08/03/2022 | |
| 1212 N Stafford St | 1212 N STAFFORD ST | 0 | 0 | 0 | 1 | 0 | 07/28/2022 | |
| 1812 S Nelson St | 1812 S NELSON ST | 0 | 0 | 0 | 1 | 0 | 07/28/2022 | |
| 3801 N Dickerson St | 3801 N DICKERSON ST | 0 | 0 | 0 | 1 | 0 | 07/28/2022 | |
| 3001 2nd Rd N | 3001 2ND RD N | 0 | 0 | 0 | 1 | 0 | 07/26/2022 | |
| 3119 Key Blvd | 3119 KEY BLVD | 0 | 0 | 0 | 1 | 0 | 07/25/2022 | |
| 5025 34th Rd N | 5025 34TH RD N | 0 | 0 | 0 | 1 | 0 | 07/25/2022 | |
| 2398 N Quincy St | 2398 N QUINCY ST | 0 | 0 | 0 | 1 | 0 | 07/21/2022 | |
| 6601 31st St N | 6601 31ST ST N | 0 | 0 | 0 | 1 | 0 | 07/21/2022 | |
| 1623 N Roosevelt St | 1623 N ROOSEVELT ST | 0 | 0 | 0 | 1 | 0 | 07/20/2022 | |
| 1731 S Glebe Rd | 1731 S GLEBE RD | 0 | 0 | 0 | 1 | 0 | 07/19/2022 | |
| 3300 N Kensington St | 3300 N KENSINGTON ST | 0 | 0 | 0 | 1 | 0 | 07/18/2022 | |
| 1017 21st St S (AD) | 1017 21ST ST S | 0 | 0 | 0 | 1 | 0 | 07/13/2022 | |
| 6007 Williamsburg Blvd | 6007 WILLIAMSBURG BLVD | 0 | 0 | 0 | 1 | 0 | 07/12/2022 | |
| 1916 N Underwood St | 1916 N UNDERWOOD ST | 0 | 0 | 0 | 1 | 0 | 07/11/2022 | |
| 2939 John Marshall Dr | 2939 JOHN MARSHALL DR | 0 | 0 | 0 | 1 | 0 | 07/11/2022 | |
| 3050 Military Rd | 3050 MILITARY RD | 0 | 0 | 0 | 1 | 0 | 07/08/2022 | |
| 3150 N Pollard St | 3150 N POLLARD ST | 0 | 0 | 0 | 1 | 0 | 07/08/2022 | |
| 2408 N Rockingham St | 2408 N ROCKINGHAM ST | 0 | 0 | 0 | 1 | 0 | 07/07/2022 | |
| 515 S Taylor St | 515 S TAYLOR ST | 0 | 0 | 0 | 1 | 0 | 07/07/2022 | |
| 4010 20th St N | 4010 20TH ST N | 0 | 0 | 0 | 1 | 0 | 07/06/2022 | |
| 313 N Fillmore St | 313 N FILLMORE ST | 0 | 0 | 0 | 1 | 0 | 07/05/2022 | |
| 5741 4th St N | 5741 4TH ST N | 0 | 0 | 0 | 1 | 0 | 07/05/2022 | |
| 1800 N Hartford St | 1800 N HARTFORD ST | 0 | 0 | 0 | 1 | 0 | 07/01/2022 | |
| 4026 21st St S | 4026 21ST ST S | 0 | 0 | 0 | 1 | 0 | 07/01/2022 | |
| 4519 19th Rd R | 4519 19TH RD R | 0 | 0 | 0 | 1 | 0 | 06/30/2022 | |
| 1807 N Hollister St | 1807 N HOLLISTER ST | 0 | 0 | 0 | 1 | 0 | 06/29/2022 | |
| 5619 8th St N | 5619 8TH ST N | 0 | 0 | 0 | 1 | 0 | 06/29/2022 | |
| 2037 N Utah St | 2037 N UTAH ST | 0 | 0 | 0 | 1 | 0 | 06/28/2022 | |
| 3443 N Venice St | 3443 N VENICE ST | 0 | 0 | 0 | 1 | 0 | 06/28/2022 | |
| 5133 37th St N | 5133 37TH ST N | 0 | 0 | 0 | 1 | 0 | 06/22/2022 | |
| 708 N Jefferson St (AD) | 708 N JEFFERSON ST | 0 | 0 | 0 | 1 | 0 | 06/22/2022 | |
| 1711 N Barton St | 1711 N BARTON ST | 0 | 0 | 0 | 1 | 0 | 06/21/2022 | |
| 5661 8th Rd N | 5661 8TH RD N | 0 | 0 | 0 | 1 | 0 | 06/17/2022 | |
| 6325 36th St N | 6325 36TH ST N | 0 | 0 | 0 | 1 | 0 | 06/17/2022 | |
| 6128 35th St N | 6128 35TH ST N | 0 | 0 | 0 | 1 | 0 | 06/15/2022 | |
| 862 N Frederick St | 862 N FREDERICK ST | 0 | 0 | 0 | 1 | 0 | 06/15/2022 | |
| 1904 N Tuckahoe St | 1904 N TUCKAHOE ST | 0 | 0 | 0 | 1 | 0 | 06/13/2022 | |
| 2704 1st Rd N | 2704 1ST RD N | 0 | 0 | 0 | 1 | 0 | 06/13/2022 | |
| 5743 4th St N | 5743 4TH ST N | 0 | 0 | 0 | 1 | 0 | 06/10/2022 | |
| 4132 34th Rd R | 4132 34TH RD R | 0 | 0 | 0 | 1 | 0 | 06/09/2022 | |
| 2415 1st St S | 2415 1ST ST S | 0 | 0 | 0 | 1 | 0 | 06/06/2022 | |
| 924 28th St S | 924 28TH ST S | 0 | 0 | 0 | 1 | 0 | 06/06/2022 | |
| 3630 N Nelson St | 3630 N NELSON ST | 0 | 0 | 0 | 1 | 0 | 06/01/2022 | |
| 1619 N Kenilworth St | 1619 N KENILWORTH ST | 0 | 0 | 0 | 1 | 0 | 05/25/2022 | |
| 2602 2nd St S (AD) | 2602 2ND ST S | 0 | 0 | 0 | 1 | 0 | 05/25/2022 | |
| 3433 N Albemarle St | 3433 N ALBEMARLE ST | 0 | 0 | 0 | 1 | 0 | 05/25/2022 | |
| 4810 23rd St N (AD) | 4810 23RD ST N | 0 | 0 | 0 | 1 | 0 | 05/25/2022 | |
| 879 N Jefferson St | 879 N JEFFERSON ST | 0 | 0 | 0 | 1 | 0 | 05/25/2022 | |

| Project Name | Address | Office (s.f.) | Retail (s.f.) | Other* (s.f.) | Residential Units | Hotel Rooms | Completion Date | Site Plan Number** |
|---------------------------|----------------------|------------------|------------------|------------------|----------------------|----------------|--------------------|-----------------------|
| 4009 25th St N | 4009 25TH ST N | 0 | 0 | 0 | 1 | 0 | 05/20/2022 | |
| 1719 S Garfield St (AD) | 1719 S GARFIELD ST | 0 | 0 | 0 | 1 | 0 | 05/19/2022 | |
| 5616 Yorktown Blvd (AD) | 5616 YORKTOWN BLVD | 0 | 0 | 0 | 1 | 0 | 05/19/2022 | |
| 926 28th St S | 926 28TH ST S | 0 | 0 | 0 | 1 | 0 | 05/18/2022 | |
| 1723 N Taylor St | 1723 N TAYLOR ST | 0 | 0 | 0 | 1 | 0 | 05/17/2022 | |
| 1139 N Ivanhoe St | 1139 N IVANHOE ST | 0 | 0 | 0 | 1 | 0 | 05/16/2022 | |
| 509 S Taylor St | 509 S TAYLOR ST | 0 | 0 | 0 | 1 | 0 | 05/13/2022 | |
| 3901 N Upland St | 3901 N UPLAND ST | 0 | 0 | 0 | 1 | 0 | 05/04/2022 | |
| 4812 Old Dominion Dr (AD) | 4812 OLD DOMINION DR | 0 | 0 | 0 | 1 | 0 | 05/03/2022 | |
| 922 N Cleveland St (AD) | 922 N CLEVELAND ST | 0 | 0 | 0 | 1 | 0 | 05/03/2022 | |
| 2914 N Edison St | 2914 N EDISON ST | 0 | 0 | 0 | 1 | 0 | 04/27/2022 | |
| 5337 26th St N | 5337 26TH ST N | 0 | 0 | 0 | 1 | 0 | 04/27/2022 | |
| 1135 N Ivanhoe St | 1135 N IVANHOE ST | 0 | 0 | 0 | 1 | 0 | 04/26/2022 | |
| 612 22nd St S | 612 22ND ST S | 0 | 0 | 0 | 1 | 0 | 04/26/2022 | |
| 1912 N Lexington St | 1912 N LEXINGTON ST | 0 | 0 | 0 | 1 | 0 | 04/22/2022 | |
| 3619 N Vernon St | 3619 N VERNON ST | 0 | 0 | 0 | 1 | 0 | 04/22/2022 | |
| 5240 11th St N | 5240 11TH ST N | 0 | 0 | 0 | 1 | 0 | 04/21/2022 | |
| 1922 N Quincy St | 1922 N QUINCY ST | 0 | 0 | 0 | 1 | 0 | 04/15/2022 | |
| 2827 N Somerset St | 2827 N SOMERSET ST | 0 | 0 | 0 | 1 | 0 | 04/14/2022 | |
| 5029 25th Pl N | 5029 25TH PL N | 0 | 0 | 0 | 1 | 0 | 04/13/2022 | |
| 2260 N Upton St | 2260 N UPTON ST | 0 | 0 | 0 | 1 | 0 | 04/08/2022 | |
| 2264 N Upton St | 2264 N UPTON ST | 0 | 0 | 0 | 1 | 0 | 04/08/2022 | |
| 2613 N Harrison St | 2613 N HARRISON ST | 0 | 0 | 0 | 1 | 0 | 03/30/2022 | |
| 4627 14th St S | 4627 14TH ST S | 0 | 0 | 0 | 1 | 0 | 03/30/2022 | |
| 4822 37th St N | 4822 37TH ST N | 0 | 0 | 0 | 1 | 0 | 03/22/2022 | |
| 3123 Key Blvd | 3123 KEY BLVD | 0 | 0 | 0 | 1 | 0 | 03/18/2022 | |
| 5717 6th St N | 5717 6TH ST N | 0 | 0 | 0 | 1 | 0 | 03/14/2022 | |
| 4156 39th St N | 4156 39TH ST N | 0 | 0 | 0 | 1 | 0 | 03/11/2022 | |
| 5231 19th St N | 5231 19TH ST N | 0 | 0 | 0 | 1 | 0 | 03/09/2022 | |
| 1912 N Kenilworth St | 1912 N KENILWORTH ST | 0 | 0 | 0 | 1 | 0 | 03/08/2022 | |
| 2126 N Hollister St | 2126 N HOLLISTER ST | 0 | 0 | 0 | 1 | 0 | 03/04/2022 | |
| 6412 27th St N | 6412 27TH ST N | 0 | 0 | 0 | 1 | 0 | 03/04/2022 | |
| 4534 15th St N | 4534 15TH ST N | 0 | 0 | 0 | 1 | 0 | 03/03/2022 | |
| 1222 N Livingston St (AD) | 1222 N LIVINGSTON ST | 0 | 0 | 0 | 1 | 0 | 03/02/2022 | |
| 3406 N Vermont St | 3406 N VERMONT ST | 0 | 0 | 0 | 1 | 0 | 03/02/2022 | |
| 3506 15th St N (AD) | 3506 15TH ST N | 0 | 0 | 0 | 1 | 0 | 03/02/2022 | |
| 620 21st St S | 620 21ST ST S | 0 | 0 | 0 | 1 | 0 | 02/28/2022 | |
| 4011 Vacation Ln | 4011 VACATION LN | 0 | 0 | 0 | 1 | 0 | 02/23/2022 | |
| 4701 37th St N | 4701 37TH ST N | 0 | 0 | 0 | 1 | 0 | 02/15/2022 | |
| 2135 S Oxford St | 2135 S OXFORD ST | 0 | 0 | 0 | 1 | 0 | 02/14/2022 | |
| 2100 N Quintana St | 2100 N QUINTANA ST | 0 | 0 | 0 | 1 | 0 | 02/07/2022 | |
| 1328 N Stafford St | 1328 N STAFFORD ST | 0 | 0 | 0 | 1 | 0 | 01/31/2022 | |
| 1703 N Edison St | 1703 N EDISON ST | 0 | 0 | 0 | 1 | 0 | 01/25/2022 | |
| 4021 19th St S | 4021 19TH ST S | 0 | 0 | 0 | 1 | 0 | 01/25/2022 | |
| 3822 30th Rd N | 3822 30TH RD N | 0 | 0 | 0 | 1 | 0 | 01/24/2022 | |
| 4200 40th St N | 4200 40TH ST N | 0 | 0 | 0 | 1 | 0 | 01/21/2022 | |
| 3532 N Ohio St | 3532 N OHIO ST | 0 | 0 | 0 | 1 | 0 | 01/20/2022 | |
| 935 N Edgewood St | 935 N EDGEWOOD ST | 0 | 0 | 0 | 1 | 0 | 01/20/2022 | |
| 5115 9th St N | 5115 9TH ST N | 0 | 0 | 0 | 1 | 0 | 01/18/2022 | |
| 6717 31st St N | 6717 31ST ST N | 0 | 0 | 0 | 1 | 0 | 01/13/2022 | |
| 3061 N Pollard St | 3061 N POLLARD ST | 0 | 0 | 0 | 1 | 0 | 01/07/2022 | |
| 6610 25th St N | 6610 25TH ST N | 0 | 0 | 0 | 1 | 0 | 01/07/2022 | |

| Project Name | Address | Office (s.f.) | Retail (s.f.) | Other* (s.f.) | Residential Units | Hotel Rooms | Completion Date | Site Plan Number** |
|---------------------------------------|---------------|------------------|------------------|------------------|----------------------|----------------|--------------------|-----------------------|
| 608 22nd St S | 608 22ND ST S | 0 | 0 | 0 | 1 | 0 | 01/06/2022 | |
| OUTSIDE PLANNING AREA SUBTOTAL | | 0 | 0 | 0 | 163 | 0 | | |
| SINGLE-FAMILY HOUSES SUBTOTAL | | 0 | 0 | 0 | 185 | 0 | | |
| ARLINGTON TOTAL | | 0 | 40,519 | 364,862 | 1,122 | 0 | | |

* Includes schools, health care facilities, recreation centers, fire houses, etc.

** Numbers listed refer to the site plan number. Other codes are as follows: B-R = By-right; FBC = Formed Based Code; PROF = Proffer; UP = Use Permit; URD = Unified Residential Development; UCMUD = Unified Commercial Mixed Use Development; Sp. Ag. = Special Agreement. ADU = Accessory Dwelling Unit.

Summary of Demolitions

Arlington County, Virginia

01/01/2022 Through 12/31/2022

| Project Name | Address | Office (s.f.) | Retail (s.f.) | Other* (s.f.) | Residential Units | Hotel Rooms | Demolition Date | Site Plan Number** |
|---|-------------------------|------------------|------------------|------------------|----------------------|----------------|--------------------|-----------------------|
| CLARENDON | | | | | | | | |
| Red Top Office | 3251 WASHINGTON BLVD | 10,272 | 0 | 0 | 0 | 0 | 01/06/2022 | |
| CLARENDON SUBTOTAL | | 10,272 | 0 | 0 | 0 | 0 | | |
| BALLSTON | | | | | | | | |
| Ballston Baptist Church Rectory | 4400 11th ST N | 0 | 0 | 2,233 | 0 | 0 | 04/08/2022 | |
| Ballston Baptist Church | 1031 N VERMONT ST | 0 | 0 | 8,223 | 0 | 0 | 04/05/2022 | |
| BALLSTON SUBTOTAL | | 0 | 0 | 10,456 | 0 | 0 | | |
| CRYSTAL CITY | | | | | | | | |
| 1601 Crystal Dr | 1601 CRYSTAL DR | 0 | 647 | 0 | 0 | 0 | 04/06/2022 | |
| Crystal Plaza: Office Bldg. 1 | 2001 S CLARK ST | 164,615 | 8,568 | 0 | 0 | 0 | 01/27/2022 | 11 |
| CRYSTAL CITY SUBTOTAL | | 164,615 | 9,215 | 0 | 0 | 0 | | |
| COLUMBIA PIKE | | | | | | | | |
| 601 S Carlin Springs Rd (Former VHC Urgent Care Facility) | 601 S CARLIN SPRINGS RD | 0 | 0 | 138,405 | 0 | 0 | 09/26/2022 | |
| Columbia Garden Apartments | 5309 8TH RD S | 0 | 0 | 0 | 62 | 0 | 07/06/2022 | |
| COLUMBIA PIKE SUBTOTAL | | 0 | 0 | 138,405 | 62 | 0 | | |
| LANGSTON BOULEVARD | | | | | | | | |
| HALLS HILL FIRE STA #8 | 4845 LANGSTON BLVD | 0 | 0 | 5,266 | 0 | 0 | 04/12/2022 | B-R |
| LANGSTON BOULEVARD SUBTOTAL | | 0 | 0 | 5,266 | 0 | 0 | | |
| OUTSIDE PLANNING AREA | | | | | | | | |
| 2726 S Uhle St Warehouse | 2726 S UHLE ST | 0 | 0 | 0 | 1 | 0 | 09/15/2022 | |
| | 2633 SHIRLINGTON RD | 0 | 9,257 | 0 | 0 | 0 | 09/03/2022 | |
| OUTSIDE PLANNING AREA SUBTOTAL | | 0 | 9,257 | 0 | 1 | 0 | | |
| SUBTOTAL | | 174,887 | 18,472 | 154,127 | 63 | 0 | | |
| SINGLE-FAMILY HOUSES | | | | | | | | |
| COURT HOUSE | | | | | | | | |
| 2503 16th St N | 2503 16th ST N | 0 | 0 | 0 | 1 | 0 | 10/18/2022 | |

| Project Name | Address | Office (s.f.) | Retail (s.f.) | Other* (s.f.) | Residential Units | Hotel Rooms | Demolition Date | Site Plan Number** |
|------------------------------------|-------------------------|------------------|------------------|------------------|----------------------|----------------|--------------------|-----------------------|
| 1608 N Cleveland St | 1608 N CLEVELAND ST | 0 | 0 | 0 | 1 | 0 | 05/12/2022 | |
| 1630 N Barton St | 1630 N BARTON ST | 0 | 0 | 0 | 1 | 0 | 05/10/2022 | |
| COURT HOUSE SUBTOTAL | | 0 | 0 | 0 | 3 | 0 | | |
| CLARENDON | | | | | | | | |
| 804 N Highland St | 804 N HIGHLAND ST | 0 | 0 | 0 | 1 | 0 | 05/15/2022 | |
| 2911 7th St N | 2911 7th ST N | 0 | 0 | 0 | 1 | 0 | 04/19/2022 | |
| 904 N Irving St | 904 N IRVING ST | 0 | 0 | 0 | 1 | 0 | 02/24/2022 | |
| CLARENDON SUBTOTAL | | 0 | 0 | 0 | 3 | 0 | | |
| VIRGINIA SQUARE | | | | | | | | |
| 650 N Jackson St | 650 N JACKSON ST | 0 | 0 | 0 | 1 | 0 | 07/25/2022 | |
| 520 N Monroe St | 520 N MONROE ST | 0 | 0 | 0 | 1 | 0 | 01/12/2022 | |
| 514 N Monroe St | 514 N MONROE ST | 0 | 0 | 0 | 1 | 0 | 01/11/2022 | |
| VIRGINIA SQUARE SUBTOTAL | | 0 | 0 | 0 | 3 | 0 | | |
| BALLSTON | | | | | | | | |
| 620 N Vermont St | 620 N VERMONT ST | 0 | 0 | 0 | 1 | 0 | 09/20/2022 | |
| BALLSTON SUBTOTAL | | 0 | 0 | 0 | 1 | 0 | | |
| COLUMBIA PIKE | | | | | | | | |
| 3925 8th St S | 3925 8th ST S | 0 | 0 | 0 | 1 | 0 | 11/28/2022 | |
| 820 S Oakland St | 820 S OAKLAND ST | 0 | 0 | 0 | 1 | 0 | 10/17/2022 | |
| 3903 9th St S | 3903 9th ST S | 0 | 0 | 0 | 1 | 0 | 10/12/2022 | |
| 3232 13th St S | 3232 13th ST S | 0 | 0 | 0 | 1 | 0 | 10/06/2022 | |
| 601 S Carlin Springs Rd | 601 S CARLIN SPRINGS RD | 0 | 0 | 0 | 1 | 0 | 09/26/2022 | |
| 4504 6th St S | 4504 6th ST S | 0 | 0 | 0 | 1 | 0 | 08/29/2022 | |
| 1118 S Emerson St | 1118 S EMERSON ST | 0 | 0 | 0 | 1 | 0 | 08/23/2022 | |
| 4318 8th St S | 4318 8th ST S | 0 | 0 | 0 | 1 | 0 | 07/27/2022 | |
| COLUMBIA PIKE SUBTOTAL | | 0 | 0 | 0 | 8 | 0 | | |
| LANGSTON BOULEVARD | | | | | | | | |
| 1827 N Culpeper St | 1827 N CULPEPER ST | 0 | 0 | 0 | 1 | 0 | 12/16/2022 | |
| 5601 24Th St N | 5601 24th ST N | 0 | 0 | 0 | 1 | 0 | 07/29/2022 | |
| 1821 N Jackson St | 1821 N JACKSON ST | 0 | 0 | 0 | 1 | 0 | 03/23/2022 | |
| 2134 N Stafford St | 2134 N STAFFORD ST | 0 | 0 | 0 | 1 | 0 | 03/15/2022 | |
| LANGSTON BOULEVARD SUBTOTAL | | 0 | 0 | 0 | 4 | 0 | | |
| OUTSIDE PLANNING AREA | | | | | | | | |
| 6101 35th St N | 6101 35TH ST N | 0 | 0 | 0 | 1 | 0 | 12/22/2022 | |
| 5117 33rd St N | 5117 33RD ST N | 0 | 0 | 0 | 1 | 0 | 12/19/2022 | |
| 3614 27th St N | 3614 27TH ST N | 0 | 0 | 0 | 1 | 0 | 12/16/2022 | |
| 3525 N Ohio St | 3525 N OHIO ST | 0 | 0 | 0 | 1 | 0 | 12/15/2022 | |
| 5213 25th rd N | 5213 25TH RD N | 0 | 0 | 0 | 1 | 0 | 12/15/2022 | |
| 5231 32nd St N | 5231 32ND ST N | 0 | 0 | 0 | 1 | 0 | 12/15/2022 | |
| 919 N Edgewood St | 919 N EDGEWOOD ST | 0 | 0 | 0 | 1 | 0 | 12/15/2022 | |

| Project Name | Address | Office (s.f.) | Retail (s.f.) | Other* (s.f.) | Residential Units | Hotel Rooms | Demolition Date | Site Plan Number** |
|----------------------|----------------------|------------------|------------------|------------------|----------------------|----------------|--------------------|-----------------------|
| 3514 N Quebec St | 3514 N QUEBEC ST | 0 | 0 | 0 | 1 | 0 | 12/13/2022 | |
| 4955 Old Dominion Dr | 4955 OLD DOMINION DR | 0 | 0 | 0 | 1 | 0 | 12/11/2022 | |
| 628 20th St S | 628 20TH ST S | 0 | 0 | 0 | 1 | 0 | 12/09/2022 | |
| 3508 N Pocomoke St | 3508 N POCOMOKE ST | 0 | 0 | 0 | 1 | 0 | 12/08/2022 | |
| 6512 36th St N | 6512 36TH ST N | 0 | 0 | 0 | 1 | 0 | 12/08/2022 | |
| 3400 N Ohio St | 3400 N OHIO ST | 0 | 0 | 0 | 1 | 0 | 12/06/2022 | |
| 5517 Yorktown Blvd | 5517 YORKTOWN BLVD | 0 | 0 | 0 | 1 | 0 | 12/06/2022 | |
| 252 N Bryan St | 252 N BRYAN ST | 0 | 0 | 0 | 1 | 0 | 12/05/2022 | |
| 1075 N Ohio St | 1075 N OHIO ST | 0 | 0 | 0 | 1 | 0 | 12/01/2022 | |
| 1150 N Ivanhoe St | 1150 N IVANHOE ST | 0 | 0 | 0 | 1 | 0 | 11/30/2022 | |
| 2710 1st rd S | 2710 1ST RD S | 0 | 0 | 0 | 1 | 0 | 11/28/2022 | |
| 5119 Yorktown Blvd | 5119 YORKTOWN BLVD | 0 | 0 | 0 | 1 | 0 | 11/27/2022 | |
| 115 N Irving St | 115 N IRVING ST | 0 | 0 | 0 | 1 | 0 | 11/15/2022 | |
| 1719 N Bryan St | 1719 N BRYAN ST | 0 | 0 | 0 | 1 | 0 | 11/15/2022 | |
| 3800 26th St N | 3800 26TH ST N | 0 | 0 | 0 | 1 | 0 | 11/15/2022 | |
| 414 N Monroe St | 414 N MONROE ST | 0 | 0 | 0 | 1 | 0 | 11/15/2022 | |
| 1305 N Tuckahoe St | 1305 N TUCKAHOE ST | 0 | 0 | 0 | 1 | 0 | 11/11/2022 | |
| 3024 N Underwood St | 3024 N UNDERWOOD ST | 0 | 0 | 0 | 1 | 0 | 11/10/2022 | |
| 1018 19th St S | 1018 19TH ST S | 0 | 0 | 0 | 1 | 0 | 11/08/2022 | |
| 1712 N Quebec St | 1712 N QUEBEC ST | 0 | 0 | 0 | 1 | 0 | 11/08/2022 | |
| 4765 33rd St N | 4765 33RD ST N | 0 | 0 | 0 | 1 | 0 | 11/07/2022 | |
| 5429 19th St N | 5429 19TH ST N | 0 | 0 | 0 | 1 | 0 | 11/07/2022 | |
| 2232 N Quantico St | 2232 N QUANTICO ST | 0 | 0 | 0 | 1 | 0 | 11/03/2022 | |
| 4311 15th St N | 4311 15TH ST N | 0 | 0 | 0 | 1 | 0 | 11/03/2022 | |
| 2600 3rd St N | 2600 3RD ST N | 0 | 0 | 0 | 1 | 0 | 10/31/2022 | |
| 5409 32nd St N | 5409 32ND ST N | 0 | 0 | 0 | 1 | 0 | 10/24/2022 | |
| 5607 32nd St N | 5607 32ND ST N | 0 | 0 | 0 | 1 | 0 | 10/21/2022 | |
| 3114 1st St N | 3114 1ST ST N | 0 | 0 | 0 | 1 | 0 | 10/07/2022 | |
| 4701 Dittmar rd | 4701 DITTMAR RD | 0 | 0 | 0 | 1 | 0 | 10/06/2022 | |
| 6300 29th St N | 6300 29TH ST N | 0 | 0 | 0 | 1 | 0 | 10/06/2022 | |
| 6593 Little Falls Rd | 6593 LITTLE FALLS RD | 0 | 0 | 0 | 1 | 0 | 10/05/2022 | |
| 5828 Little Falls Rd | 5828 LITTLE FALLS RD | 0 | 0 | 0 | 1 | 0 | 10/04/2022 | |
| 1005 17th St S | 1005 17TH ST S | 0 | 0 | 0 | 1 | 0 | 10/03/2022 | |
| 2009 S Randolph St | 2009 S RANDOLPH ST | 0 | 0 | 0 | 1 | 0 | 10/03/2022 | |
| 3830 30th rd N | 3830 30TH RD N | 0 | 0 | 0 | 1 | 0 | 10/03/2022 | |
| 866 N Lebanon St | 866 N LEBANON ST | 0 | 0 | 0 | 1 | 0 | 09/29/2022 | |
| 2639 N Rockingham St | 2639 N ROCKINGHAM ST | 0 | 0 | 0 | 1 | 0 | 09/28/2022 | |
| 3925 N Woodstock St | 3925 N WOODSTOCK ST | 0 | 0 | 0 | 1 | 0 | 09/28/2022 | |
| 5421 4Th St S | 5421 4th ST S | 0 | 0 | 0 | 1 | 0 | 09/21/2022 | |
| 5935 16th St N | 5935 16TH ST N | 0 | 0 | 0 | 1 | 0 | 09/20/2022 | |
| 4192 39Th St N | 4192 39th ST N | 0 | 0 | 0 | 1 | 0 | 09/16/2022 | |
| 2217 N Quincy St | 2217 N QUINCY ST | 0 | 0 | 0 | 1 | 0 | 09/14/2022 | |
| 1609 N Stafford St | 1609 N STAFFORD ST | 0 | 0 | 0 | 1 | 0 | 09/13/2022 | |
| 1813 N Herndon St | 1813 N HERNDON ST | 0 | 0 | 0 | 1 | 0 | 09/12/2022 | |
| 4912 17Th St N | 4912 17th ST N | 0 | 0 | 0 | 1 | 0 | 09/08/2022 | |
| 5130 26th Rd N | 5130 26TH RD N | 0 | 0 | 0 | 1 | 0 | 09/08/2022 | |
| 2620 N Powhatan St | 2620 N POWHATAN ST | 0 | 0 | 0 | 1 | 0 | 09/07/2022 | |
| 4918 16Th St N | 4918 16th ST N | 0 | 0 | 0 | 1 | 0 | 09/07/2022 | |
| 2744 N Wyoming St | 2744 N WYOMING ST | 0 | 0 | 0 | 1 | 0 | 09/06/2022 | |
| 2407 2Nd St S | 2407 2nd ST S | 0 | 0 | 0 | 1 | 0 | 08/29/2022 | |
| 1614 N Kenilworth St | 1614 N KENILWORTH ST | 0 | 0 | 0 | 1 | 0 | 08/24/2022 | |
| 3914 17Th St N | 3914 17th ST N | 0 | 0 | 0 | 1 | 0 | 08/24/2022 | |

| Project Name | Address | Office (s.f.) | Retail (s.f.) | Other* (s.f.) | Residential Units | Hotel Rooms | Demolition Date | Site Plan Number** |
|----------------------|----------------------|------------------|------------------|------------------|----------------------|----------------|--------------------|-----------------------|
| 6044 26Th Rd N | 6044 26th RD N | 0 | 0 | 0 | 1 | 0 | 08/24/2022 | |
| 1244 N Utah St | 1244 N UTAH ST | 0 | 0 | 0 | 1 | 0 | 08/23/2022 | |
| 3046 N Harrison St | 3046 N HARRISON ST | 0 | 0 | 0 | 1 | 0 | 08/23/2022 | |
| 705 31St St S | 705 31st ST S | 0 | 0 | 0 | 1 | 0 | 08/23/2022 | |
| 1119 N Illinois St | 1119 N ILLINOIS ST | 0 | 0 | 0 | 1 | 0 | 08/22/2022 | |
| 3400 N Thomas St | 3400 N THOMAS ST | 0 | 0 | 0 | 1 | 0 | 08/22/2022 | |
| 4509 39Th St N | 4509 39th ST N | 0 | 0 | 0 | 1 | 0 | 08/20/2022 | |
| 5120 25Th Pl N | 5120 25th PL N | 0 | 0 | 0 | 1 | 0 | 08/19/2022 | |
| 2785 N Wakefield St | 2785 N WAKEFIELD ST | 0 | 0 | 0 | 1 | 0 | 08/18/2022 | |
| 3409 N Buchanan St | 3409 N BUCHANAN ST | 0 | 0 | 0 | 1 | 0 | 08/18/2022 | |
| 3401 N Peary St | 3401 N PEARY ST | 0 | 0 | 0 | 1 | 0 | 08/17/2022 | |
| 3380 N Dickerson St | 3380 N DICKERSON ST | 0 | 0 | 0 | 1 | 0 | 08/16/2022 | |
| 6072 26Th St N | 6072 26th ST N | 0 | 0 | 0 | 1 | 0 | 08/16/2022 | |
| 4408 20Th Rd N | 4408 20th RD N | 0 | 0 | 0 | 1 | 0 | 08/15/2022 | |
| 5027 30Th St N | 5027 30th ST N | 0 | 0 | 0 | 1 | 0 | 08/15/2022 | |
| 3908 Military Rd | 3908 MILITARY RD | 0 | 0 | 0 | 1 | 0 | 08/10/2022 | |
| 2728 N Edison St | 2728 N EDISON ST | 0 | 0 | 0 | 1 | 0 | 08/08/2022 | |
| 5425 22Nd Rd N | 5425 22nd RD N | 0 | 0 | 0 | 1 | 0 | 08/08/2022 | |
| 5622 33Rd St N | 5622 33rd ST N | 0 | 0 | 0 | 1 | 0 | 08/08/2022 | |
| 6305 36Th St N | 6305 36th ST N | 0 | 0 | 0 | 1 | 0 | 08/05/2022 | |
| 2024 S Monroe St | 2024 S MONROE ST | 0 | 0 | 0 | 1 | 0 | 08/04/2022 | |
| 3341 N Randolph St | 3341 N RANDOLPH ST | 0 | 0 | 0 | 1 | 0 | 08/04/2022 | |
| 4007 N Stuart St | 4007 N STUART ST | 0 | 0 | 0 | 1 | 0 | 08/04/2022 | |
| 5407 36Th St N | 5407 36th ST N | 0 | 0 | 0 | 1 | 0 | 08/03/2022 | |
| 2321 N Richmond St | 2321 N RICHMOND ST | 0 | 0 | 0 | 1 | 0 | 07/26/2022 | |
| 5706 4Th St N | 5706 4th ST N | 0 | 0 | 0 | 1 | 0 | 07/26/2022 | |
| 1400 N Harrison St | 1400 N HARRISON ST | 0 | 0 | 0 | 1 | 0 | 07/22/2022 | |
| 205 N Edgewood St | 205 N EDGEWOOD ST | 0 | 0 | 0 | 1 | 0 | 07/21/2022 | |
| 2424 N Nelson St | 2424 N NELSON ST | 0 | 0 | 0 | 1 | 0 | 07/21/2022 | |
| 6258 12Th St N | 6258 12th ST N | 0 | 0 | 0 | 1 | 0 | 07/21/2022 | |
| 3727 25Th St N | 3727 25th ST N | 0 | 0 | 0 | 1 | 0 | 07/20/2022 | |
| 3716 N Nelson St | 3716 N NELSON ST | 0 | 0 | 0 | 1 | 0 | 07/19/2022 | |
| 3601 N Potomac St | 3601 N POTOMAC ST | 0 | 0 | 0 | 1 | 0 | 07/13/2022 | |
| 1917 N Utah St | 1917 N UTAH ST | 0 | 0 | 0 | 1 | 0 | 07/12/2022 | |
| 5208 Washington Blvd | 5208 WASHINGTON BLVD | 0 | 0 | 0 | 1 | 0 | 07/11/2022 | |
| 4933 18Th St N | 4933 18th ST N | 0 | 0 | 0 | 1 | 0 | 07/07/2022 | |
| 2618 S Joyce St | 2618 S JOYCE ST | 0 | 0 | 0 | 1 | 0 | 07/06/2022 | |
| 2628 N Potomac St | 2628 N POTOMAC ST | 0 | 0 | 0 | 1 | 0 | 06/30/2022 | |
| 4283 38th St N | 4283 38TH ST N | 0 | 0 | 0 | 1 | 0 | 06/22/2022 | |
| 6023 21st St N | 6023 21ST ST N | 0 | 0 | 0 | 1 | 0 | 06/15/2022 | |
| 5604 4th St S | 5604 4TH ST S | 0 | 0 | 0 | 1 | 0 | 06/14/2022 | |
| 1718 N Monroe St | 1718 N MONROE ST | 0 | 0 | 0 | 1 | 0 | 06/13/2022 | |
| 4192 39th St N | 4192 39th ST N | 0 | 0 | 0 | 1 | 0 | 06/06/2022 | |
| 2101 N Inglewood St | 2101 N INGLEWOOD ST | 0 | 0 | 0 | 1 | 0 | 06/02/2022 | |
| 3611 Roberts Ln | 3611 ROBERTS LN | 0 | 0 | 0 | 1 | 0 | 06/02/2022 | |
| 4515 37th St N | 4515 37TH ST N | 0 | 0 | 0 | 1 | 0 | 06/01/2022 | |
| 5543 15th St N | 5543 15TH ST N | 0 | 0 | 0 | 1 | 0 | 06/01/2022 | |
| 828 25th St S | 828 25TH ST S | 0 | 0 | 0 | 1 | 0 | 06/01/2022 | |
| 5725 16th St N | 5725 16TH ST N | 0 | 0 | 0 | 1 | 0 | 05/27/2022 | |
| 3205 23rd St N | 3205 23RD ST N | 0 | 0 | 0 | 1 | 0 | 05/24/2022 | |
| 3011 19th St S | 3011 19TH ST S | 0 | 0 | 0 | 1 | 0 | 05/17/2022 | |
| 1904 N Taylor St | 1904 N TAYLOR ST | 0 | 0 | 0 | 1 | 0 | 05/16/2022 | |

| Project Name | Address | Office (s.f.) | Retail (s.f.) | Other* (s.f.) | Residential Units | Hotel Rooms | Demolition Date | Site Plan Number** |
|---------------------------|---------------------------|------------------|------------------|------------------|----------------------|----------------|--------------------|-----------------------|
| 2009 N Kenilworth St | 2009 N KENILWORTH ST | 0 | 0 | 0 | 1 | 0 | 05/16/2022 | |
| 719 21st St S | 719 21ST ST S | 0 | 0 | 0 | 1 | 0 | 05/16/2022 | |
| 927 N Barton St | 927 N BARTON ST | 0 | 0 | 0 | 1 | 0 | 05/16/2022 | |
| 4940 Little Falls Rd | 4940 LITTLE FALLS RD | 0 | 0 | 0 | 1 | 0 | 05/12/2022 | |
| 4018 N Stafford St | 4018 N STAFFORD ST | 0 | 0 | 0 | 1 | 0 | 05/11/2022 | |
| 1127 28th St S | 1127 28TH ST S | 0 | 0 | 0 | 1 | 0 | 05/10/2022 | |
| 6623 32nd St N | 6623 32ND ST N | 0 | 0 | 0 | 1 | 0 | 05/10/2022 | |
| 4771 33rd St N | 4771 33RD ST N | 0 | 0 | 0 | 1 | 0 | 05/06/2022 | |
| 1829 N Columbus St | 1829 N COLUMBUS ST | 0 | 0 | 0 | 1 | 0 | 05/05/2022 | |
| 2925 1st St N | 2925 1ST ST N | 0 | 0 | 0 | 1 | 0 | 05/05/2022 | |
| 3452 N Emerson St | 3452 N EMERSON ST | 0 | 0 | 0 | 1 | 0 | 05/02/2022 | |
| 1020 19th St S | 1020 19TH ST S | 0 | 0 | 0 | 1 | 0 | 04/27/2022 | |
| 4950 Little Falls Rd | 4950 LITTLE FALLS RD | 0 | 0 | 0 | 1 | 0 | 04/26/2022 | |
| 5119 25th Rd N | 5119 25TH RD N | 0 | 0 | 0 | 1 | 0 | 04/21/2022 | |
| 4407 16th St N | 4407 16TH ST N | 0 | 0 | 0 | 1 | 0 | 04/19/2022 | |
| 2620 N Ohio St | 2620 N OHIO ST | 0 | 0 | 0 | 1 | 0 | 04/13/2022 | |
| 6020 26th Rd N | 6020 26TH RD N | 0 | 0 | 0 | 1 | 0 | 04/13/2022 | |
| 412 N Cleveland St | 412 N CLEVELAND ST | 0 | 0 | 0 | 1 | 0 | 04/12/2022 | |
| 5303 10th St N | 5303 10TH ST N | 0 | 0 | 0 | 1 | 0 | 04/08/2022 | |
| 2320 S Fern St | 2320 S FERN ST | 0 | 0 | 0 | 1 | 0 | 04/01/2022 | |
| 3563 N Abingdon St | 3563 N ABINGDON ST | 0 | 0 | 0 | 1 | 0 | 03/28/2022 | |
| 1212 N Utah St | 1212 N UTAH ST | 0 | 0 | 0 | 1 | 0 | 03/24/2022 | |
| 1907 N Roosevelt St | 1907 N ROOSEVELT ST | 0 | 0 | 0 | 1 | 0 | 03/16/2022 | |
| 2101 S Monroe St | 2101 S MONROE ST | 0 | 0 | 0 | 1 | 0 | 03/15/2022 | |
| 1204 N Sycamore St | 1204 N SYCAMORE ST | 0 | 0 | 0 | 1 | 0 | 03/13/2022 | |
| 6415 24th St N | 6415 24TH ST N | 0 | 0 | 0 | 1 | 0 | 03/10/2022 | |
| 1504 N Powhatan St | 1504 N POWHATAN ST | 0 | 0 | 0 | 1 | 0 | 03/09/2022 | |
| 6047 19th Rd N | 6047 19TH RD N | 0 | 0 | 0 | 1 | 0 | 03/07/2022 | |
| 1316 N Taylor St | 1316 N TAYLOR ST | 0 | 0 | 0 | 1 | 0 | 03/02/2022 | |
| 1912 N Hollister St | 1912 N HOLLISTER ST | 0 | 0 | 0 | 1 | 0 | 02/24/2022 | |
| 643 23rd St S | 643 23RD ST S | 0 | 0 | 0 | 1 | 0 | 02/24/2022 | |
| 135 N Edgewood St | 135 N EDGEWOOD ST | 0 | 0 | 0 | 1 | 0 | 02/22/2022 | |
| 6592 Williamsburg Blvd | 6592 WILLIAMSBURG BLVD | 0 | 0 | 0 | 1 | 0 | 02/18/2022 | |
| 2300 N Richmond St | 2300 N RICHMOND ST | 0 | 0 | 0 | 1 | 0 | 02/14/2022 | |
| 6201 Little Falls Rd | 6201 LITTLE FALLS RD | 0 | 0 | 0 | 1 | 0 | 02/14/2022 | |
| 1201 N Vernon St | 1201 N VERNON ST | 0 | 0 | 0 | 1 | 0 | 02/11/2022 | |
| 1413 N Lancaster St | 1413 N LANCASTER ST | 0 | 0 | 0 | 1 | 0 | 02/10/2022 | |
| 5115 25th Rd N | 5115 25TH RD N | 0 | 0 | 0 | 1 | 0 | 02/10/2022 | |
| 3206 N Kensington St | 3206 N KENSINGTON ST | 0 | 0 | 0 | 1 | 0 | 02/07/2022 | |
| 3547 N Valley St | 3547 N VALLEY ST | 0 | 0 | 0 | 1 | 0 | 02/04/2022 | |
| 1629 N Stafford St | 1629 N STAFFORD ST | 0 | 0 | 0 | 1 | 0 | 01/27/2022 | |
| 3401 N Albemarle St | 3401 N ALBEMARLE ST | 0 | 0 | 0 | 1 | 0 | 01/24/2022 | |
| 6008 27th St N | 6008 27TH ST N | 0 | 0 | 0 | 1 | 0 | 01/24/2022 | |
| 1722 S Arlington Ridge Rd | 1722 S ARLINGTON RIDGE RL | 0 | 0 | 0 | 1 | 0 | 01/21/2022 | |
| 1817 N Tuckahoe St | 1817 N TUCKAHOE ST | 0 | 0 | 0 | 1 | 0 | 01/21/2022 | |
| 509 N Hudson St | 509 N HUDSON ST | 0 | 0 | 0 | 1 | 0 | 01/21/2022 | |
| 2387 N Edgewood St | 2387 N EDGEWOOD ST | 0 | 0 | 0 | 1 | 0 | 01/10/2022 | |
| 1937 N Utah St | 1937 N UTAH ST | 0 | 0 | 0 | 1 | 0 | 01/06/2022 | |
| 1825 N Quesada St | 1825 N QUESADA ST | 0 | 0 | 0 | 1 | 0 | 01/05/2022 | |
| 102 S Highland St | 102 S HIGHLAND ST | 0 | 0 | 0 | 1 | 0 | 01/04/2022 | |
| 2810 3rd St N | 2810 3RD ST N | 0 | 0 | 0 | 1 | 0 | 01/04/2022 | |
| 2909 18th St S | 2909 18TH ST S | 0 | 0 | 0 | 1 | 0 | 01/03/2022 | |

| Project Name | Address | Office (s.f.) | Retail (s.f.) | Other* (s.f.) | Residential Units | Hotel Rooms | Demolition Date | Site Plan Number** |
|---------------------------------------|---------|------------------|------------------|------------------|----------------------|----------------|--------------------|-----------------------|
| OUTSIDE PLANNING AREA SUBTOTAL | | 0 | 0 | 0 | 163 | 0 | | |
| SINGLE-FAMILY HOUSES SUBTOTAL | | 0 | 0 | 0 | 185 | 0 | | |
| ARLINGTON TOTAL | | 174,887 | 18,472 | 154,127 | 248 | 0 | | |

* Includes schools, health care facilities, recreation centers, fire houses, etc.

** Numbers listed refer to the site plan number. Other codes are as follows: B-R = By-right; FBC = Formed Based Code; PROF = Proffer; UP = Use Permit; URD = Unified Residential Development; UCMUD = Unified Commercial Mixed Use Development; Sp. Ag. = Special Agreement. ADU = Accessory Dwelling Unit.