

North Quincy Street Site

Landscaping and Buffer Area Improvements

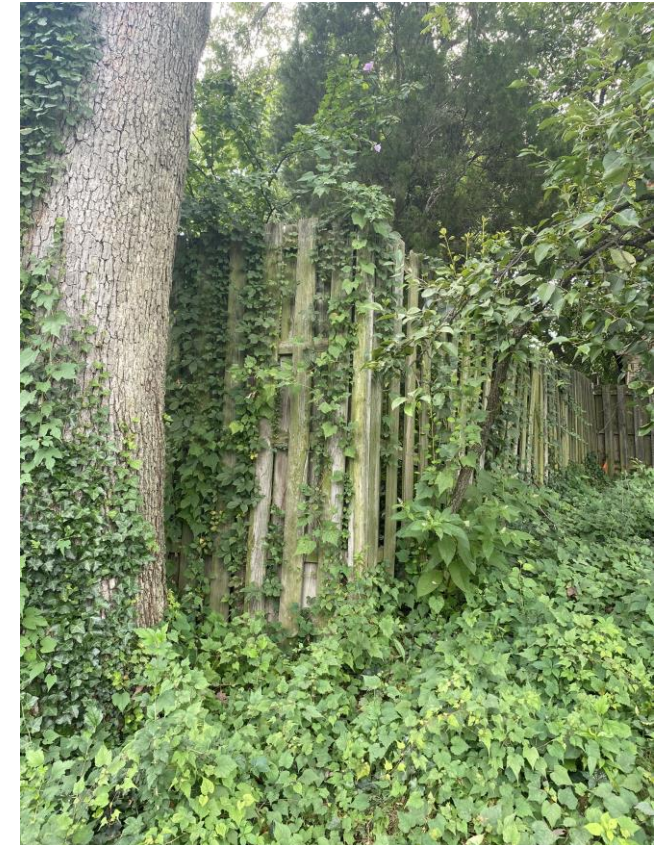
Facilities Design & Construction
Department of Environmental Services

October 12, 2022



Project Overview

- Replenish landscaping and improve buffer area along southern border of N. Quincy St. site, adjacent to residential properties
- Improvements are intended to preserve the natural resources and enhance the environment
- Establishes compliance within the intent of County Board approved site plan (via Administrative Change)
 - Planting distance in 1985 plan is not appropriate (white pines @ 10' on center)
 - Trees such as white pines should be planted 20 feet on center
 - Planting too close encourages decay, stunts growth, and decreases life expectancy



Existing conditions

Project Timeline



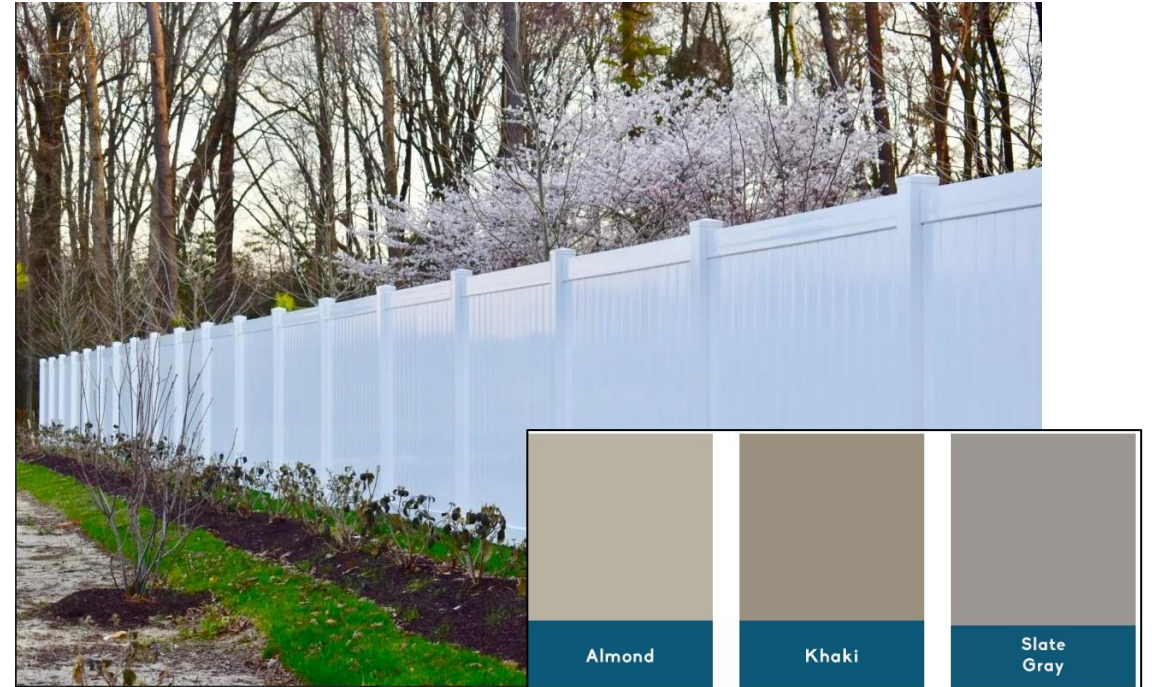
Fencing Alternatives – Seeking Feedback

- Remove deteriorated fence
- Install higher quality privacy fence along property line
- Note: The fence will be 7 feet high on average in most areas, depending on zoning.

Option 1: Cedar Privacy Fence



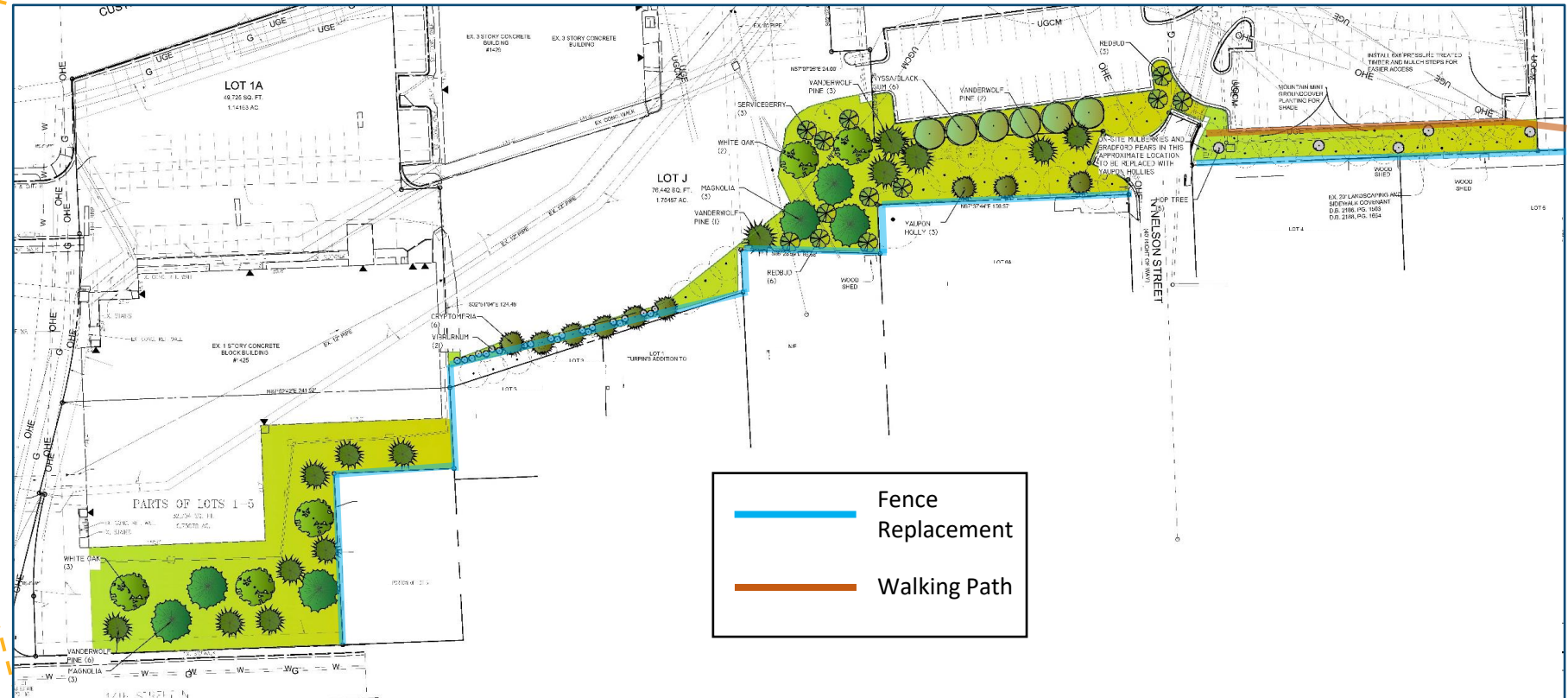
Option 2: Vinyl Fence & 3 Color Selections



Landscape Design Concept



- Invasive species removal
- Tree planting
 - 58 trees added
 - 45 existing trees to remain (approx.)
- Shrub and perennial plantings (71)
- Groundcover planting
- Existing tree removal
 - 6 invasive trees
 - ✓ 1 dead Oak Tree



**Draft concept design. Subject to change.*

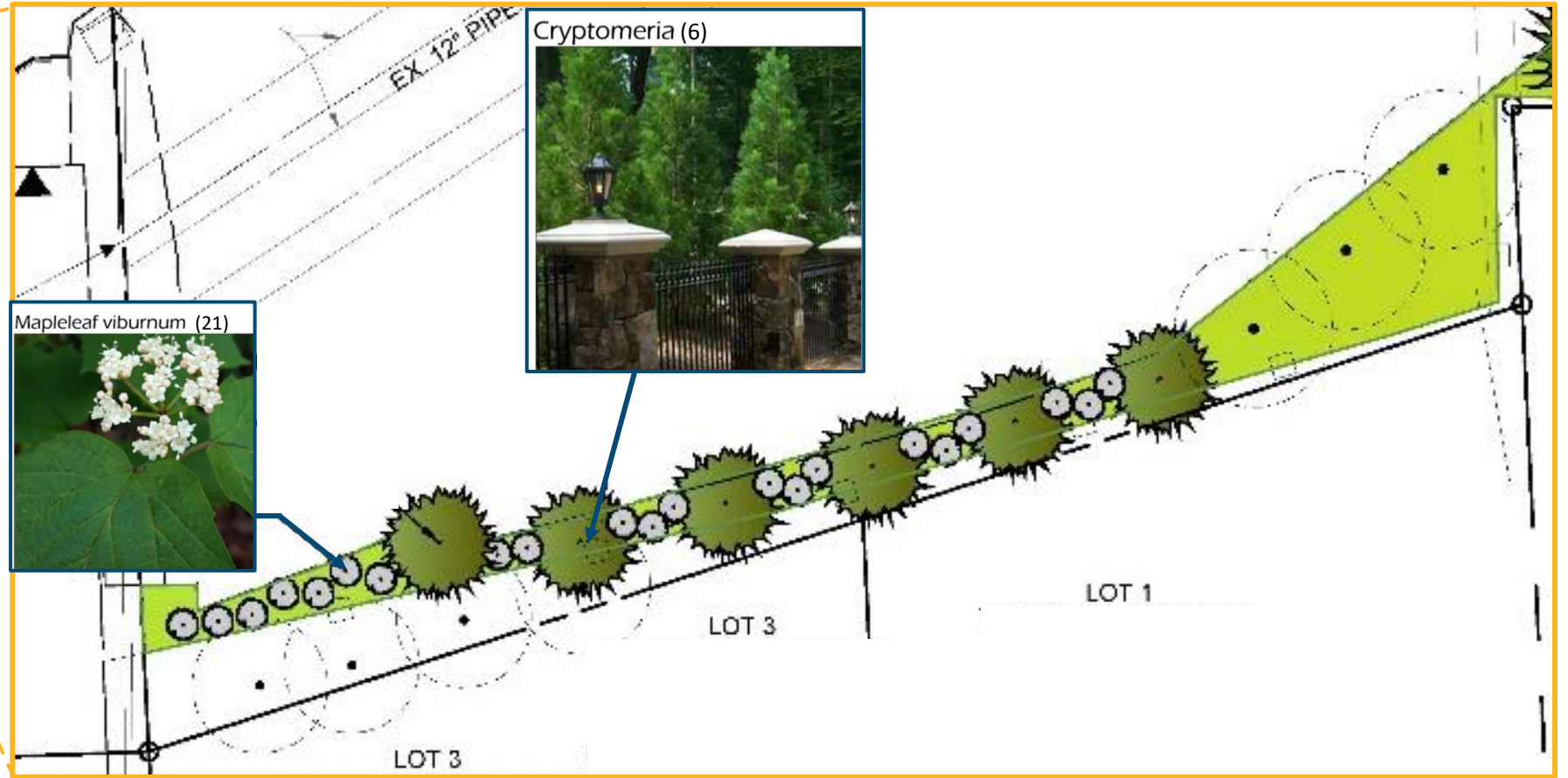
Landscaping Plan (section 1 of 4)



Landscaping Plan (section 2 of 4)





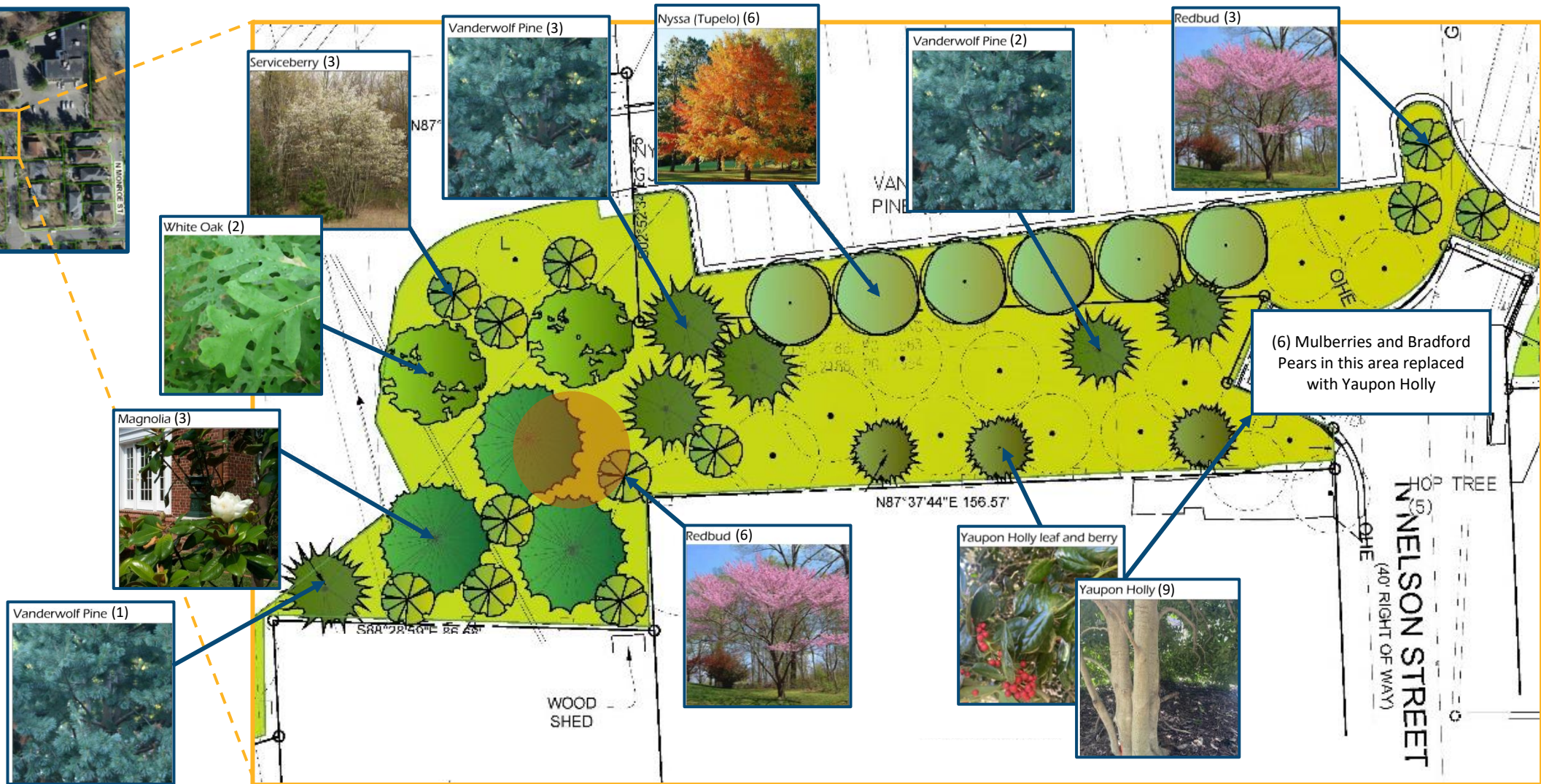
Existing Tree
To Remain



Landscaping Plan (section 3 of 4)



 Existing Tree to Remain
 Tree to be Removed

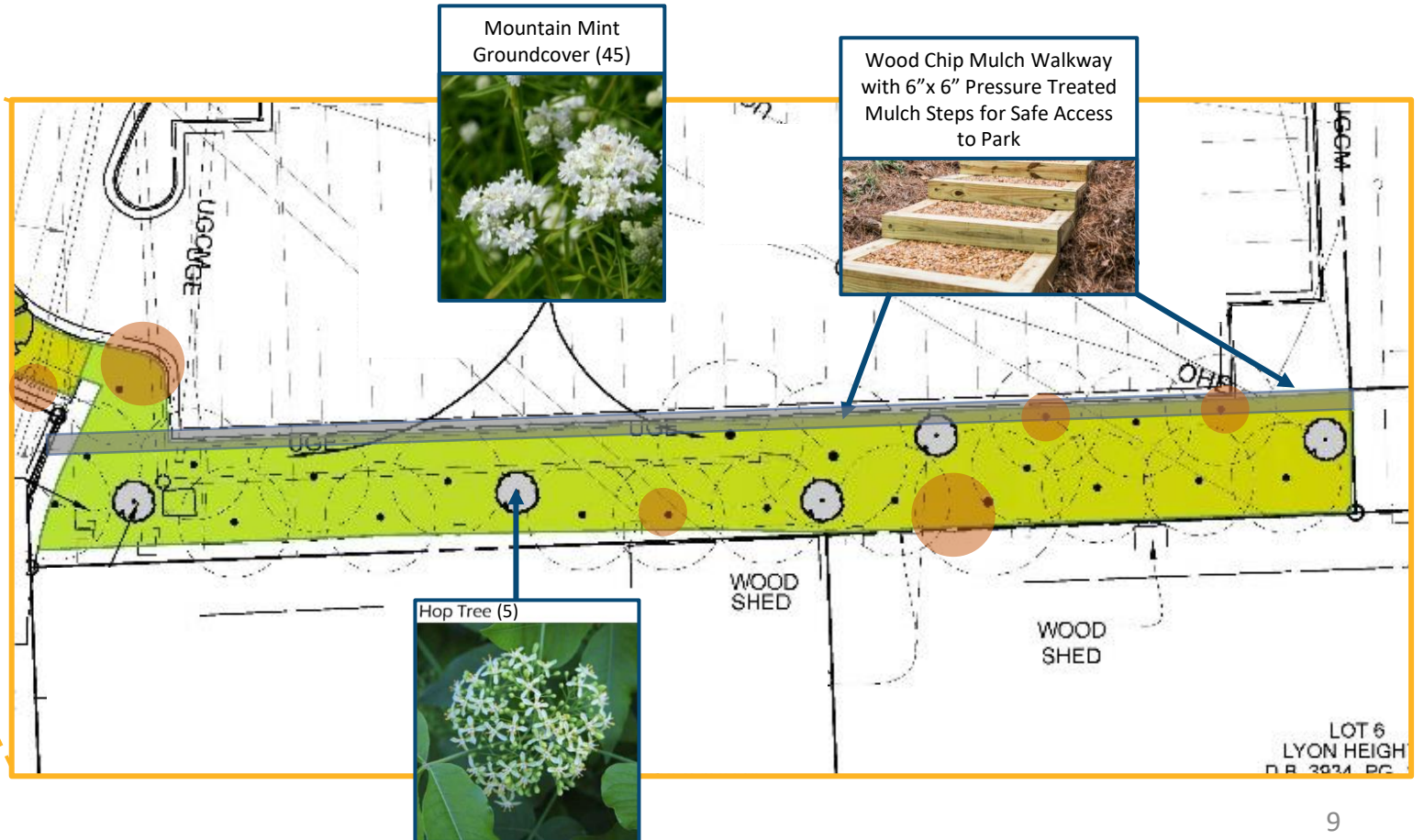


Landscaping Plan (section 4 of 4)



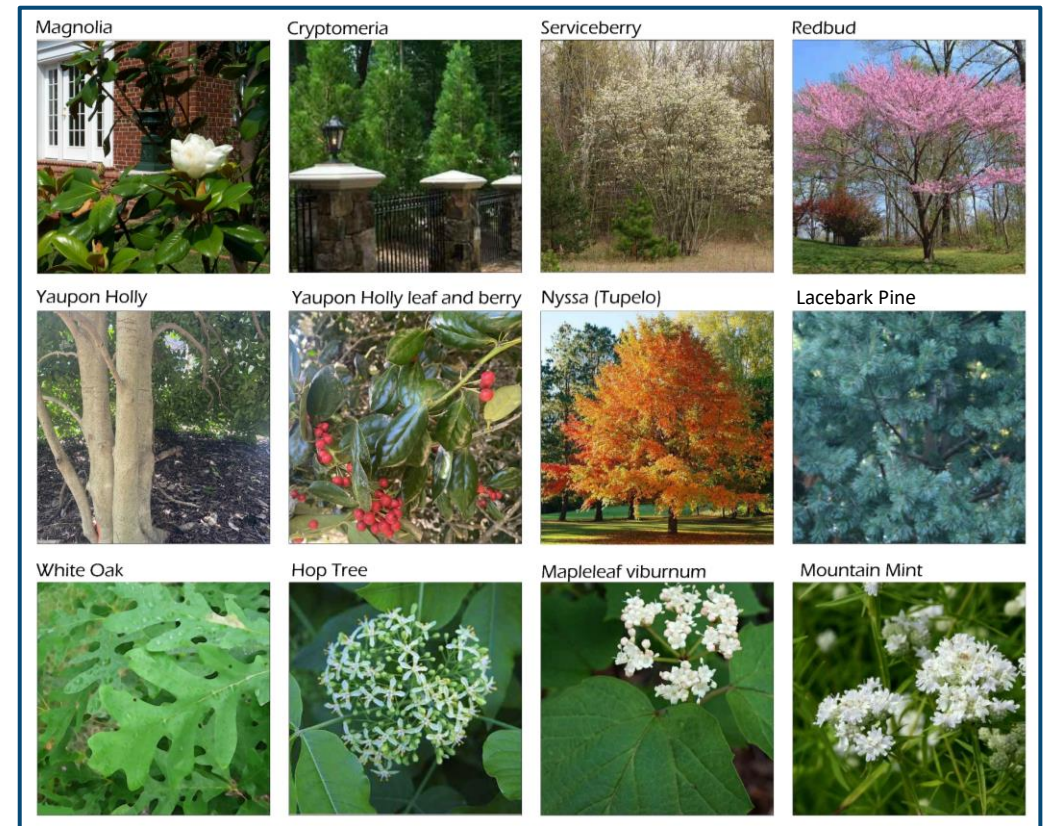
Existing Tree to Remain

Invasive Tree to be Removed



Planting Schedule

Qty.	Name	Mature Growth
Trees		
3	Serviceberry	15-25'
9	Redbud	20'
6	Cryptomeria	30-40'
9	Yaupon Holly	15-25'
6	Magnolia	60-80'
6	Nyssa/Black Gum	50-60'
14	Vanderwolf Pine	25-30'
5	White Oak	60-80'
Shrubs and Perennials		
5	Hop tree	10-15'
45	Mountain Mint	3'
21	Mapleleaf Viburnum	8-10'



**Trees and shrubs subject to change based on availability*

What to Expect

- **Invasive species removal**
 - Cut and treat invasive shrubs and vines
 - Remove six invasive tree species
- **Tree removal**
 - Chainsaw, stump grinding, and hauling activity
- **Fencing removal and replacement**
 - Land surveying and utility marking activity
 - Fence deconstruction, post-hole digging, light carpentry/sawing, concrete placement, delivery and hauling activity
- **Landscaping**
 - Planting layout and utility marking activity
 - Excavation, planting, landscaping, gardening, and delivery/staging activity

Next Steps

- The fence alternatives and landscaping plan will also be posted on the project website at <https://bit.ly/3U7X3xL>
 - Please submit any additional comments **by Friday, October 21**
- Feedback will be reviewed, incorporated into final design/plan, and posted online.
- The community will be notified prior to start of work for fencing and landscaping updates.

Contacts

- Katie O'Brien
 - Community Liaison, Environmental Services
 - kobrien@arlingtonva.us
 - 703-228-4952

- Cynthia Wilson
 - Project Manager, Environmental Services
 - cwilson@arlingtonva.us
 - 703-228-4438

- **For more information, visit the project website at <https://bit.ly/3U7X3xL>**