

September 26, 2024

Crystal Houses 7+8

SPRC Meeting

THE NEIGHBORHOODS OF

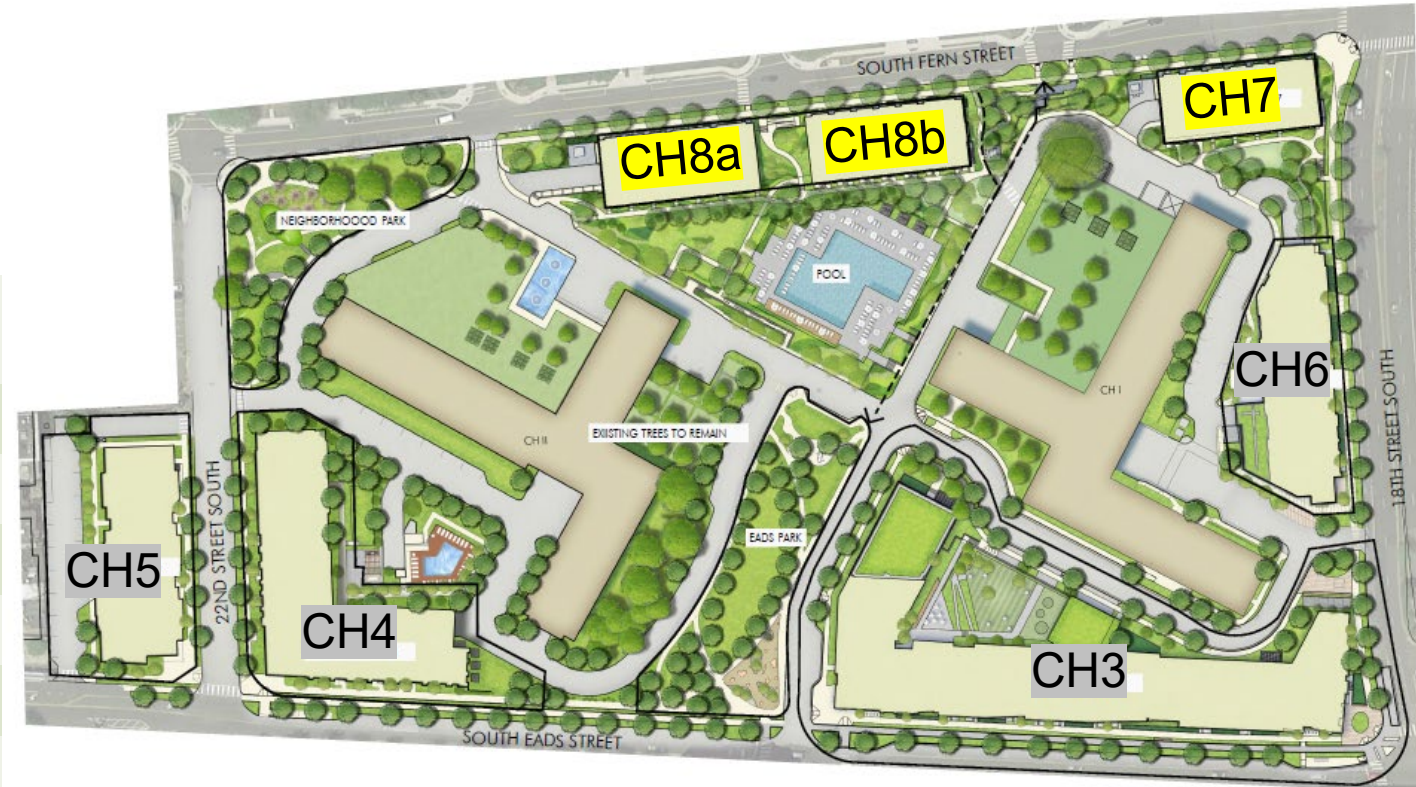
EYA *life within walking distance*[®]

Information, plans, imagery and renderings are subject to change, for illustrative purposes only, and should not be relied upon as definitive. References to "EYA" refer to EYA, LLC. EYA, LLC's development affiliates build homes in the Virginia, Maryland, and Washington, DC metropolitan area. Individual projects are developed and sold by EYA-affiliated entities, and all representations regarding the development, construction, or sale of any project or property refers to those affiliates. For CH7+8, the development affiliate entity is CH 1900 Associates LLC. No representations regarding the development, construction or sale of any portion of this community is made by EYA LLC or any EYA affiliate except CH 1900 Associates LLC.

Project Overview

- » Townhome-style multifamily
- » Underground Parking
- » Public Parks
- » Anticipated Construction Q1 2026 – Q1 2028

DEVELOPMENT PHASE	ESTIMATED CONSTRUCTION*
CH 3	Q3 2024 – Q1 2027
Eads Park	Q1 2027 – Q3 2027
CH 7+8	Q1 2026 – Q1 2028
CH 6	Q3 2026 – Q4 2028
CH 4	TBD –2030
Neighborhood Park	TBD –2030
CH 5	TBD –2030



* All dates subject to change

Project Details



42 for-sale townhomes



3 br / 2.5 ba units

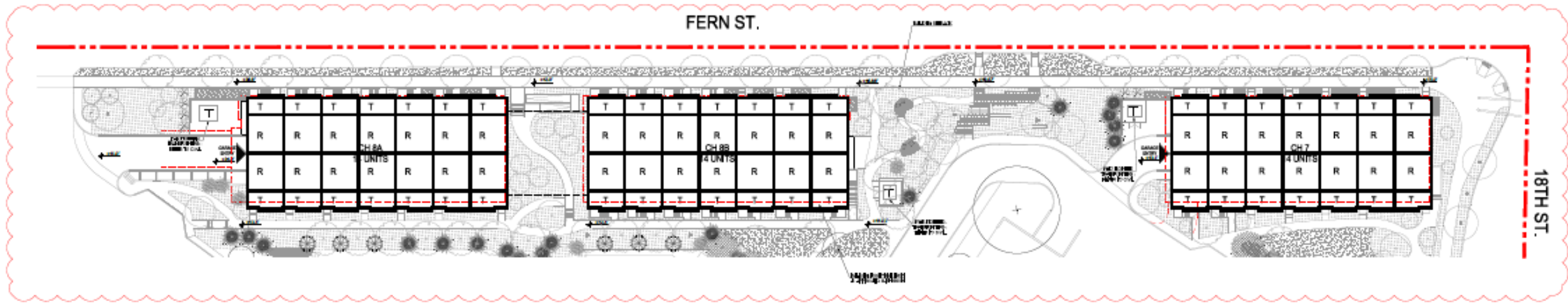


84 total resident & visitor spaces



24 total resident & visitor spaces





R • ROOF
T • TERRACE



THE NEIGHBORHOODS OF

EYA *life within walking distance*

Mid-Block Pathway to Fern

1900 South Eads





THE NEIGHBORHOODS OF

EYA *life within walking distance*

Lawn Perspective (looking to 18th)

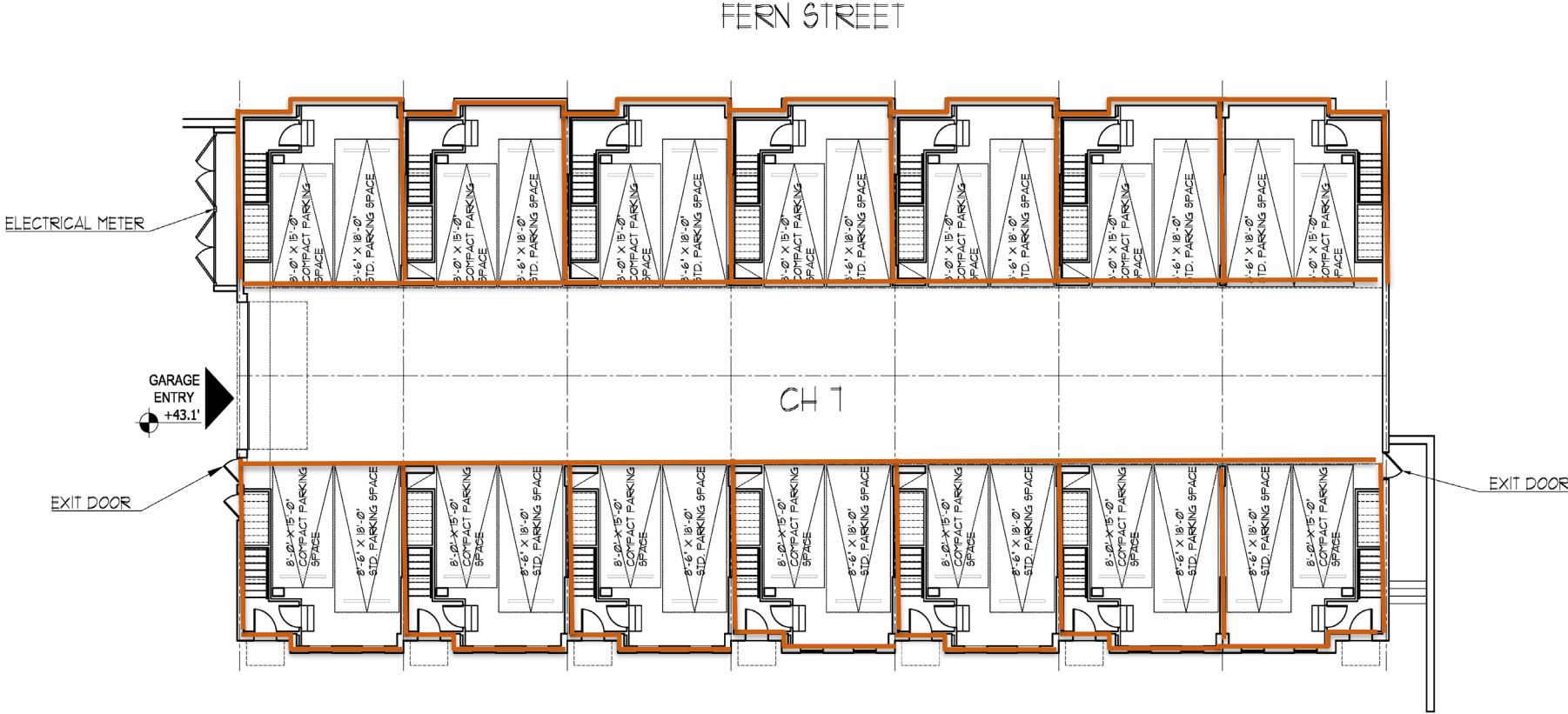
1900 South Eads





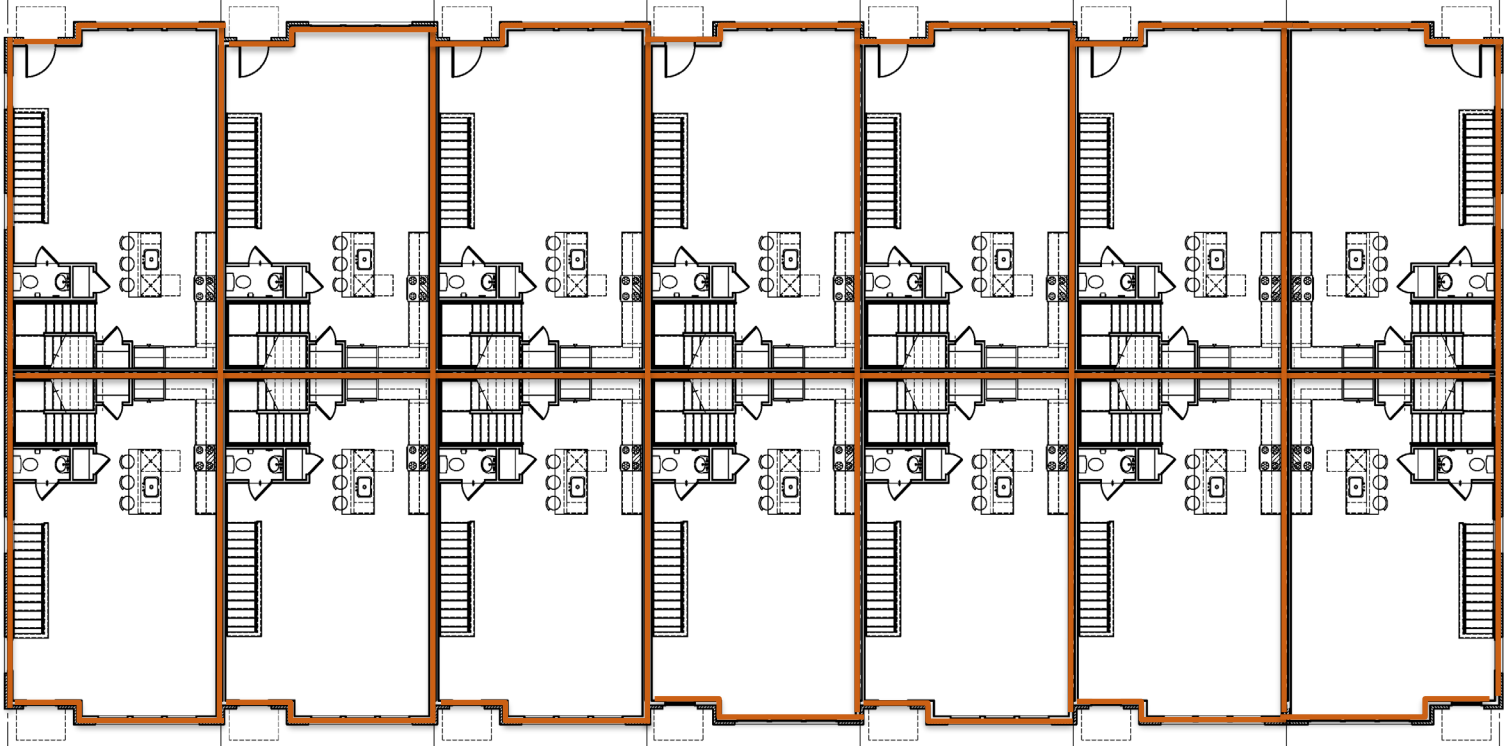


Garage Floor Plan



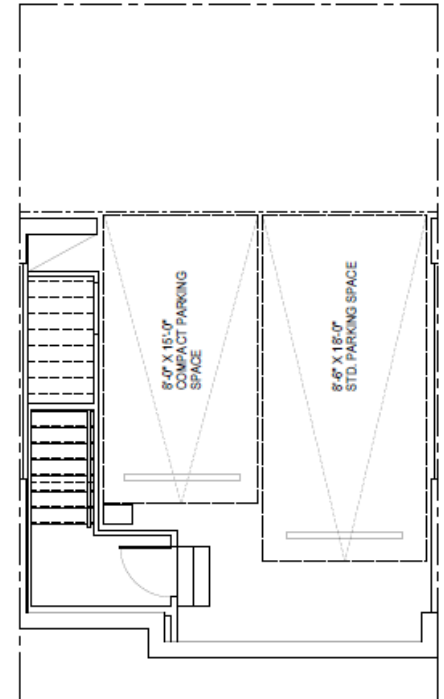
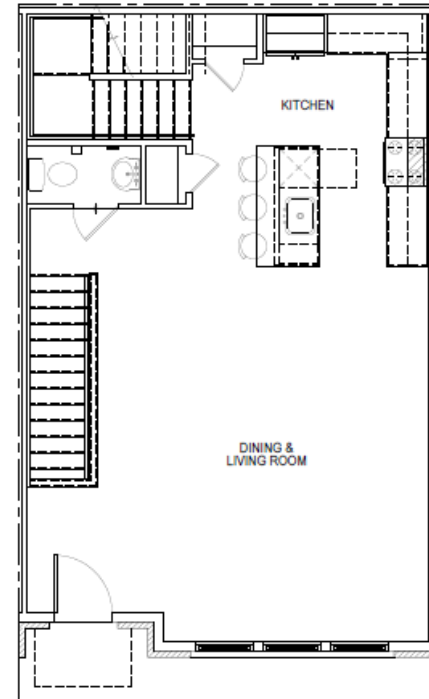
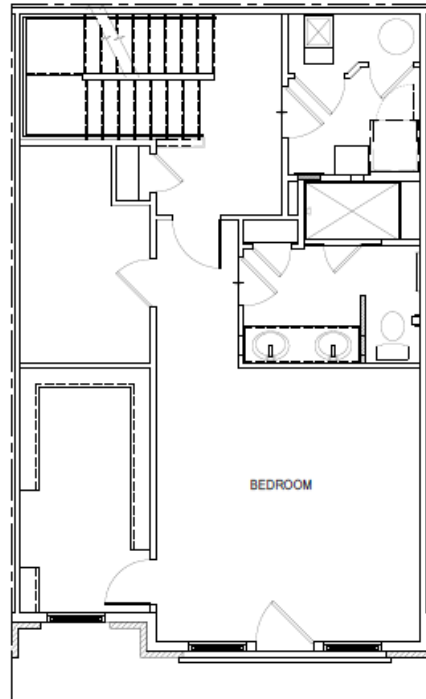
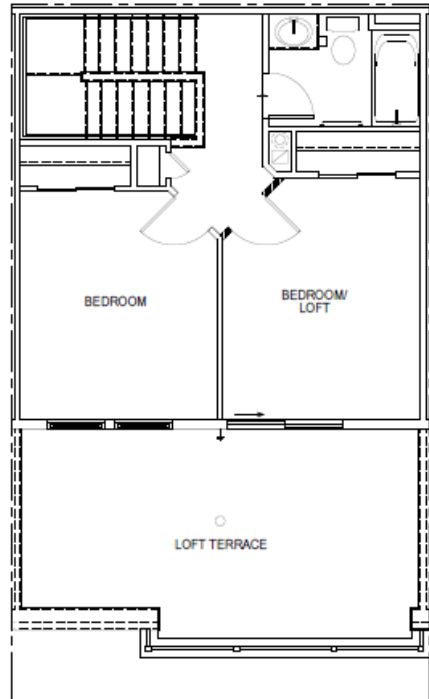
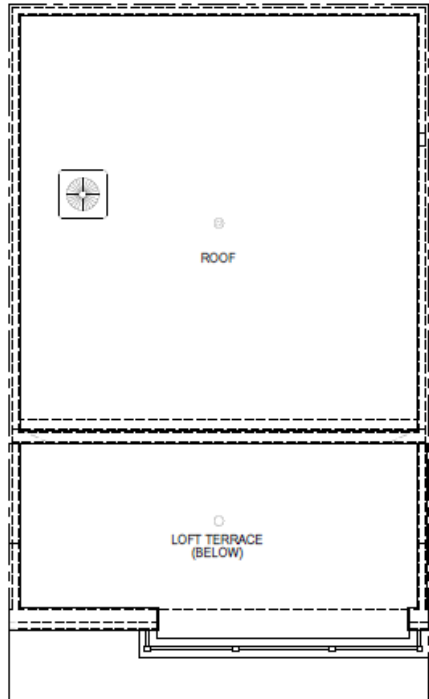
Ground Floor Plan

FERN STREET



CH 1 - GROUND FLOOR

Floor Plan | 3 BR / 2.5 BA



ROOF PLAN

LOFT FLOOR PLAN

SECOND FLOOR PLAN

GROUND FLOOR PLAN

GARAGE FLOOR PLAN

ALL ELECTRIC!!

Contact Us



Jack Lester
jlester@eya.com



Angelina Fuller
afuller@eya.com

THE NEIGHBORHOODS OF
 EYA

life within walking distance®