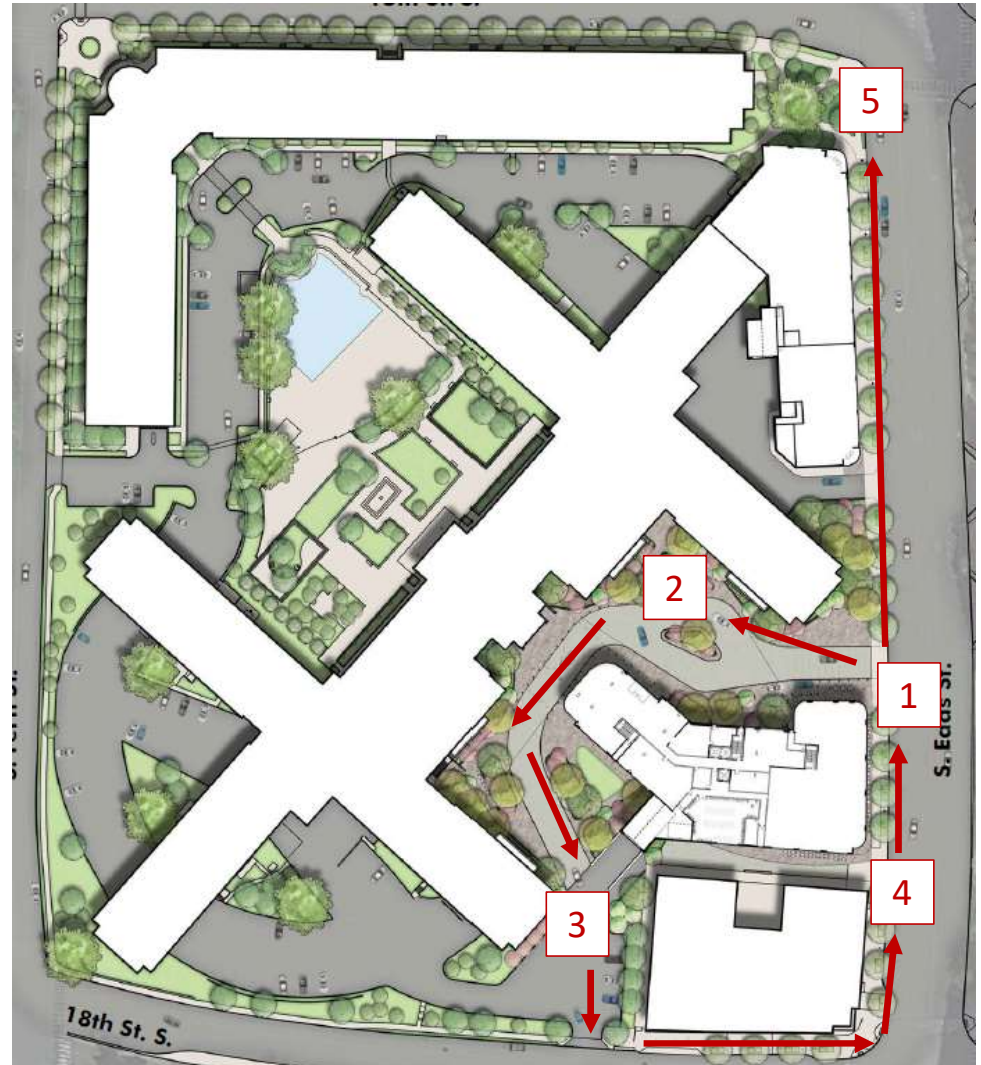


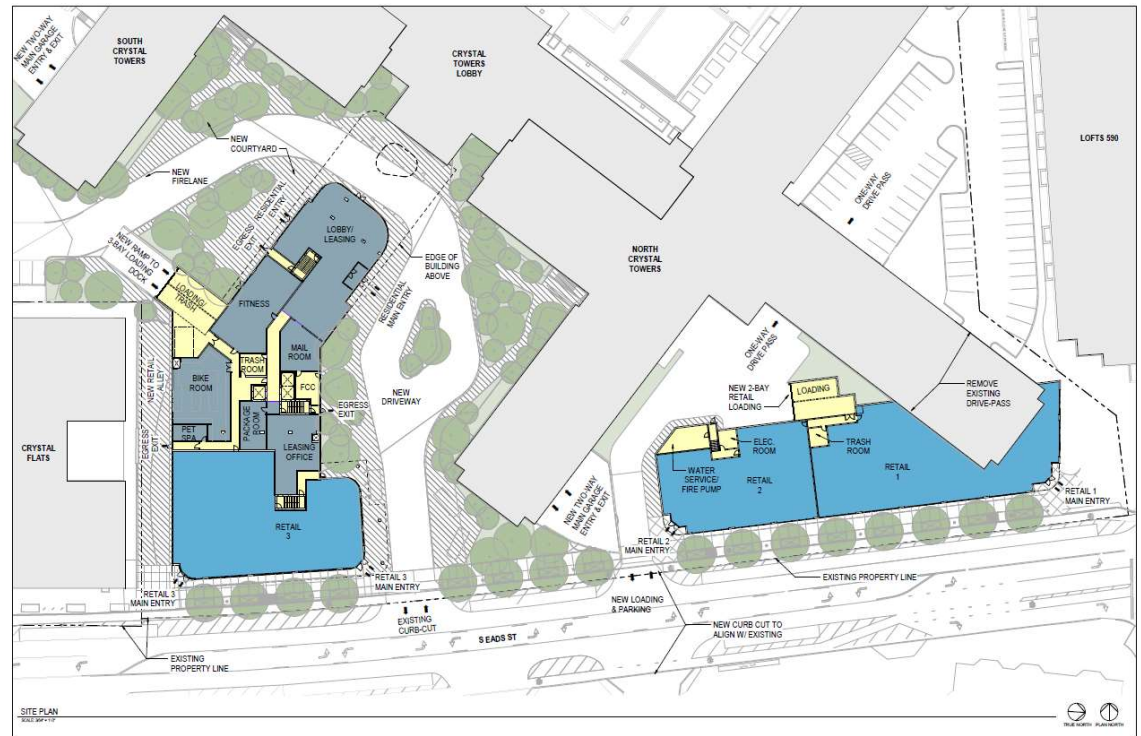
Crystal Towers Walking Tour Route

- 1 Eads St. Building Frontage
- 2 PUDO & Drop-off
- 3 South Side Facade
- 4 South Sidewalk
- 5 Retail at 15th & Eads St.



Proposed Program

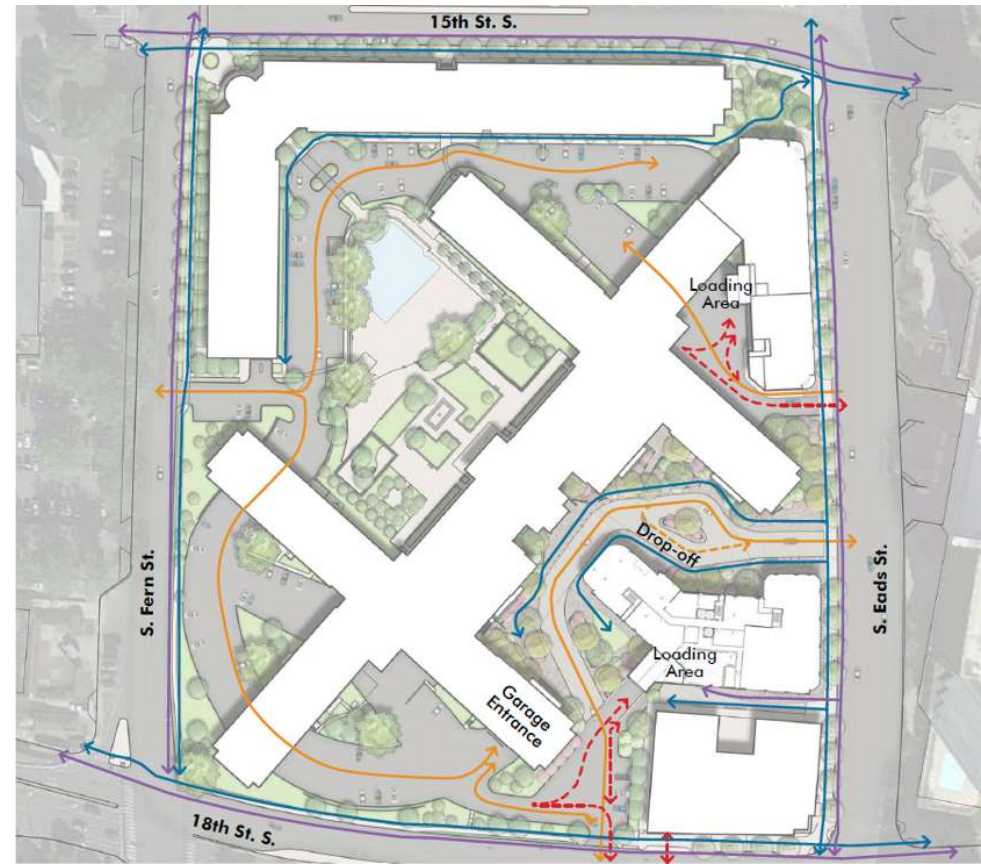
- › Proposed infill development of two existing surface parking lots off Eads St.
- › 11 Story, Mixed-Use Building
 - › 133' in height
- › 209 Multifamily Units
 - › 0.3 vehicle parking spaces per unit
 - › 127 bike parking spaces (0.6 spaces / unit)
- › 800 SF Average Unit Size
- › 27K SF of Ground Floor Retail
- › LEED Gold
 - › Intending to participate in the new Arlington County Green Building Incentive Program



Existing Site Circulation

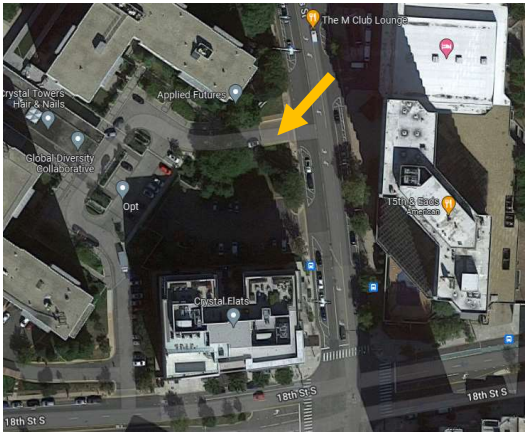


Proposed Site Circulation



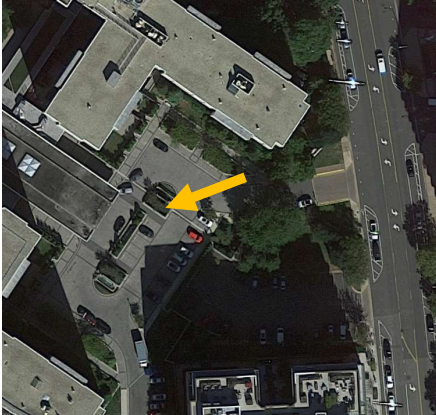
Proposed Eads St. Building Frontage

1



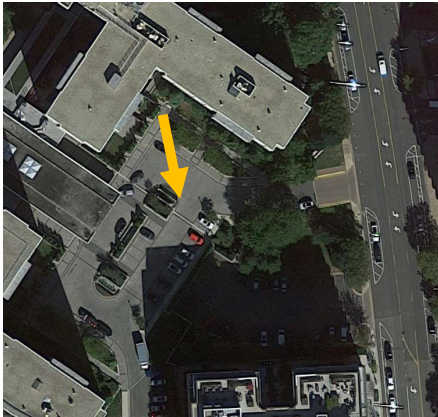
Proposed PUDO & Drop-off

2



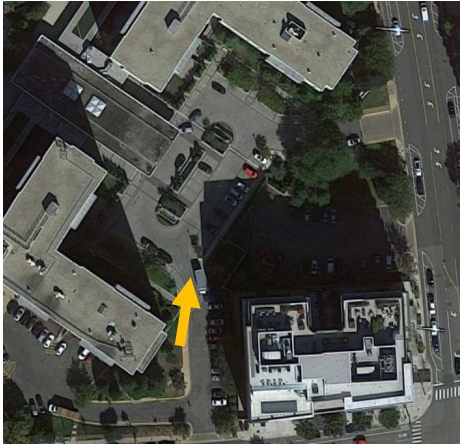
Proposed PUDO & Drop-off

2



Proposed South side of new lobby

3



Proposed South Sidewalk

4



Proposed Eads St. Retail

5

