

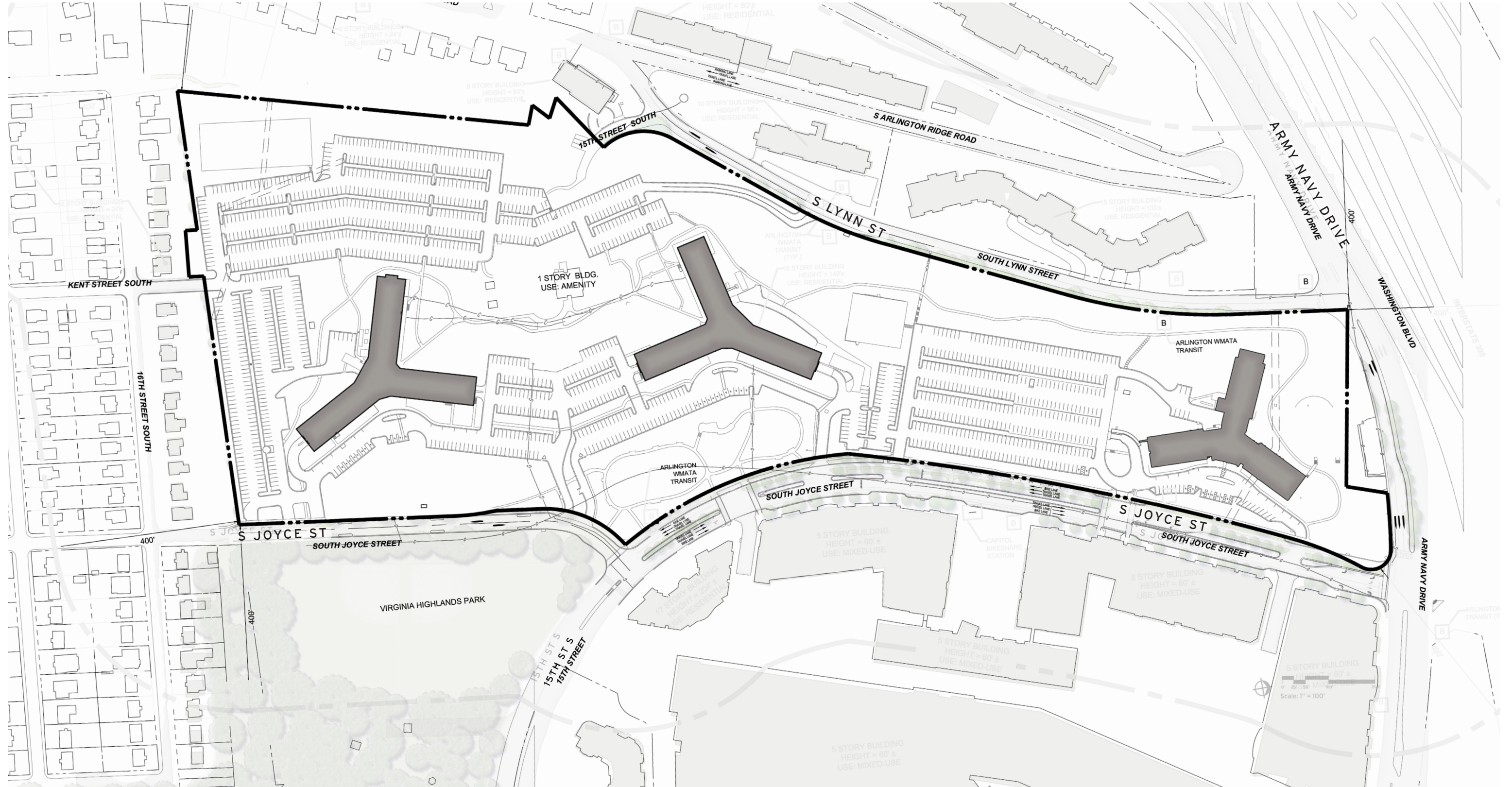


**TORTI
GALLAS +
PARTNERS**



RIVERHOUSE NEIGHBORHOOD

SITE PLAN



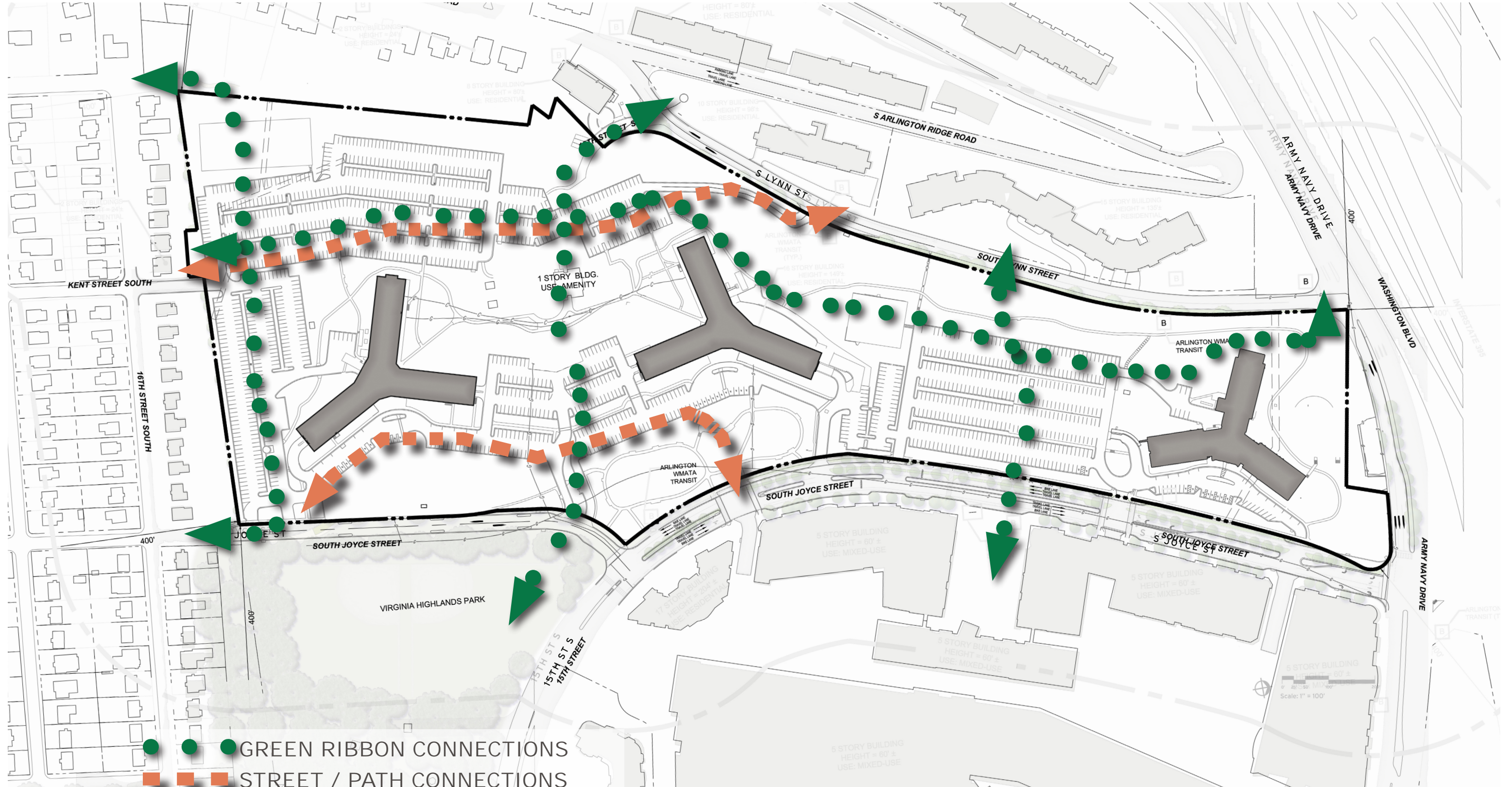
September 01, 2024 | ©2022 Tori Gallas + Partners | Grimke School, 1923 Vermont Ave NW, 2nd Floor | Washington, DC 20001 | 301.588.4800



RIVERHOUSE NEIGHBORHOOD

PRIMARY CONNECTIONS

RIVERHOUSE NEIGHBORHOOD



September 01, 2024 | ©2022 Torti Gallas + Partners | Grimke School, 1923 Vermont Ave NW, 2nd Floor | Washington, DC 20001 | 301.588.4800



RIVERHOUSE NEIGHBORHOOD

PRIMARY CONNECTIONS & OPEN SPACE

RIVERHOUSE NEIGHBORHOOD



September 01, 2024 | ©2022 Torti Gallas + Partners | Grimke School, 1923 Vermont Ave NW, 2nd Floor | Washington, DC 20001 | 301.588.4800



RIVERHOUSE NEIGHBORHOOD

SCULPTING THE EDGES

RIVERHOUSE NEIGHBORHOOD

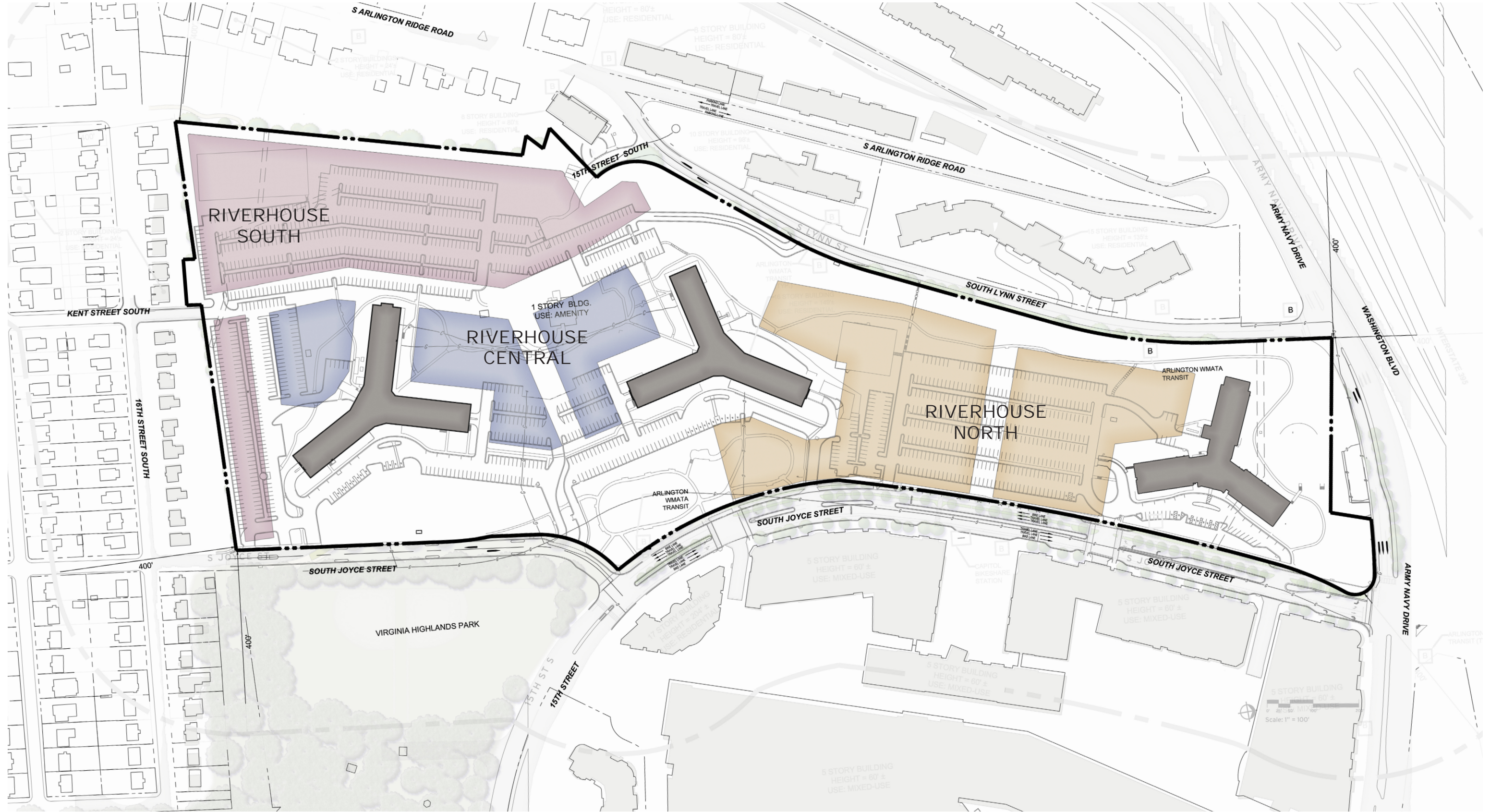


September 01, 2024 | ©2022 Torti Gallas + Partners | Grimke School, 1923 Vermont Ave NW, 2nd Floor | Washington, DC 20001 | 301.588.4800



RIVERHOUSE NEIGHBORHOOD

RIVERHOUSE NEIGHBORHOOD



September 01, 2024 | ©2022 Torti Gallas + Partners | Grimke School, 1923 Vermont Ave NW, 2nd Floor | Washington, DC 20001 | 301.588.4800



RIVERHOUSE NEIGHBORHOOD

RIVERHOUSE NEIGHBORHOOD

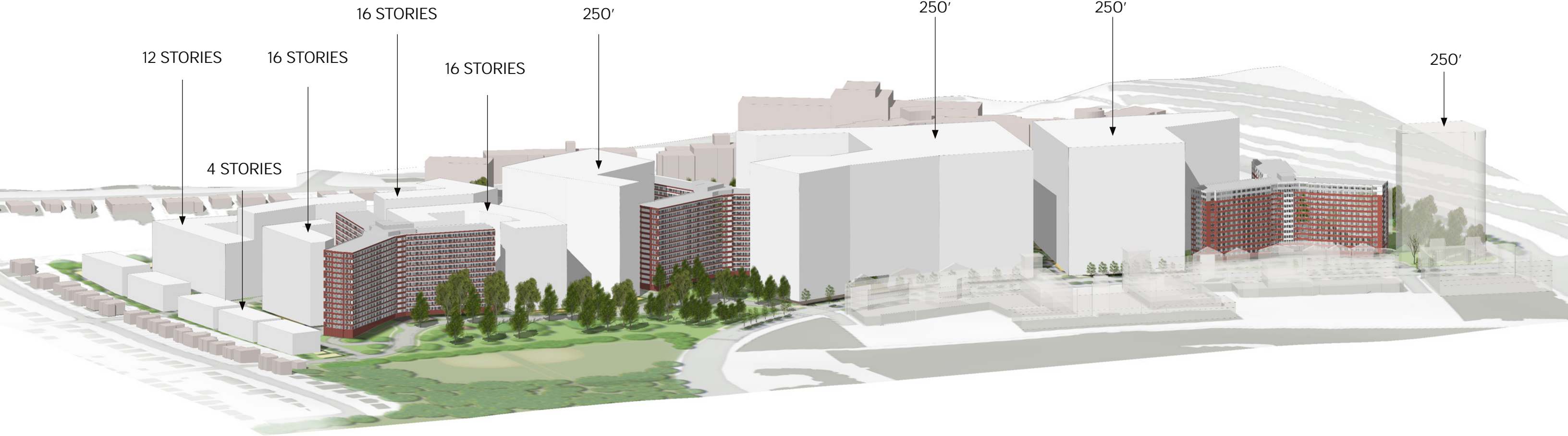


September 01, 2024 | ©2022 Torti Gallas + Partners | Grimke School, 1923 Vermont Ave NW, 2nd Floor | Washington, DC 20001 | 301.588.4800



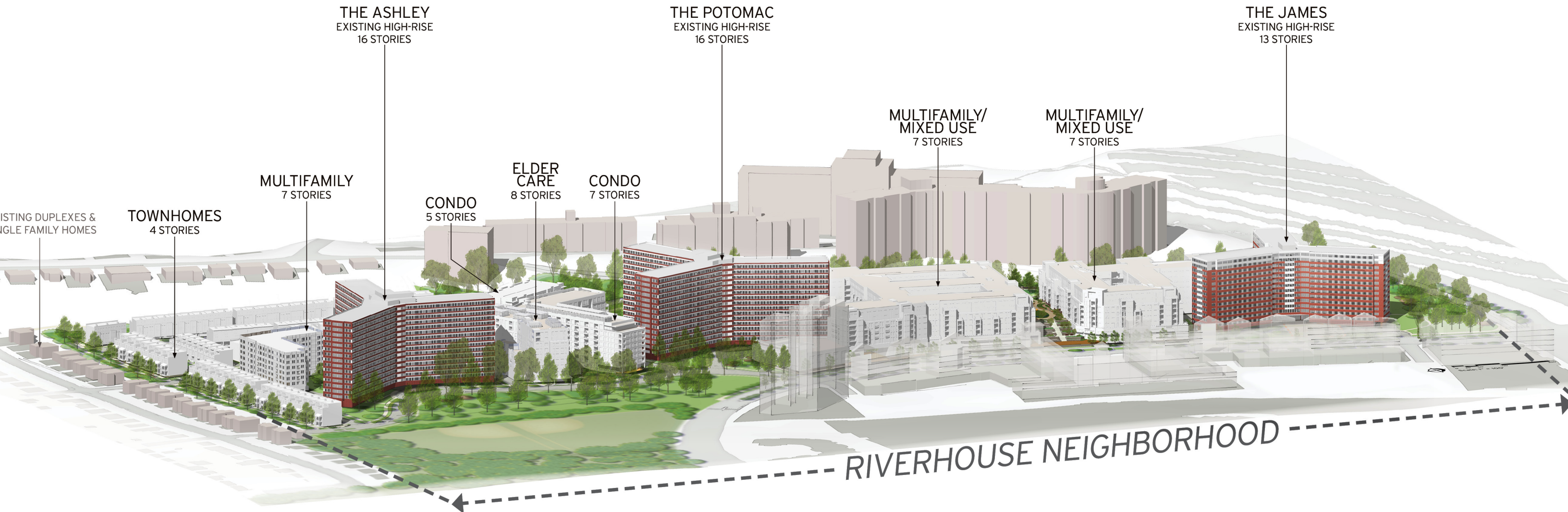
RIVERHOUSE NEIGHBORHOOD

MAXIMUM HEIGHTS RIVERHOUSE NEIGHBORHOOD



PROPOSED DESIGN

RIVERHOUSE NEIGHBORHOOD



September 01, 2024 | ©2022 Torti Gallas + Partners | Grimke School, 1923 Vermont Ave NW, 2nd Floor | Washington, DC 20001 | 301.588.4800



RIVERHOUSE NEIGHBORHOOD