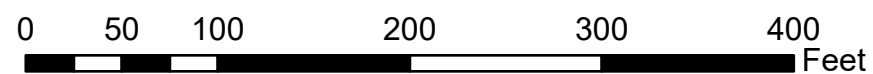


Commonwealth of Virginia, Maxar, Microsoft, Esri, Community Maps Contributors, Arlington County, VA, Fairfax County, VA, VGIN, © OpenStreetMap, Microsoft, Esri, TomTom, Garmin, SafeGraph, GeoTechnologies, Inc, METI/NASA, USGS, EPA, NPS, US Census Bureau, USDA, USFWS

OIPI GAP-TA Custis Trail

Short-Term Recommendation Map Series

Page 1 of 24



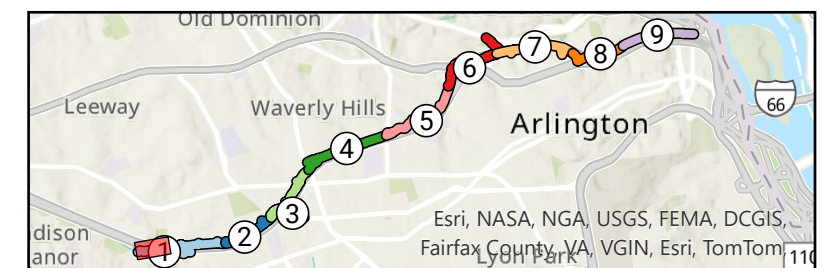
Segment

1 - Bon Air Park

Issue Type

● Curb Ramp (1)

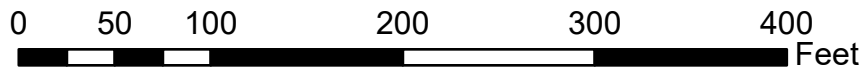
- Other Amenity (1)
- Pavement Condition (1)
- Signage/Wayfinding (3)
- Steep Slope (1)



Esri, NASA, NGA, USGS, FEMA, DCGIS, Fairfax County, VA, VGIN, Esri, TomTom

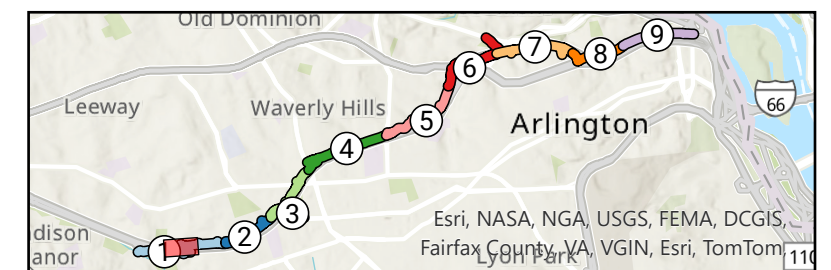


OIPI GAP-TA Custis Trail
 Short-Term Recommendation Map Series
 Page 2 of 24

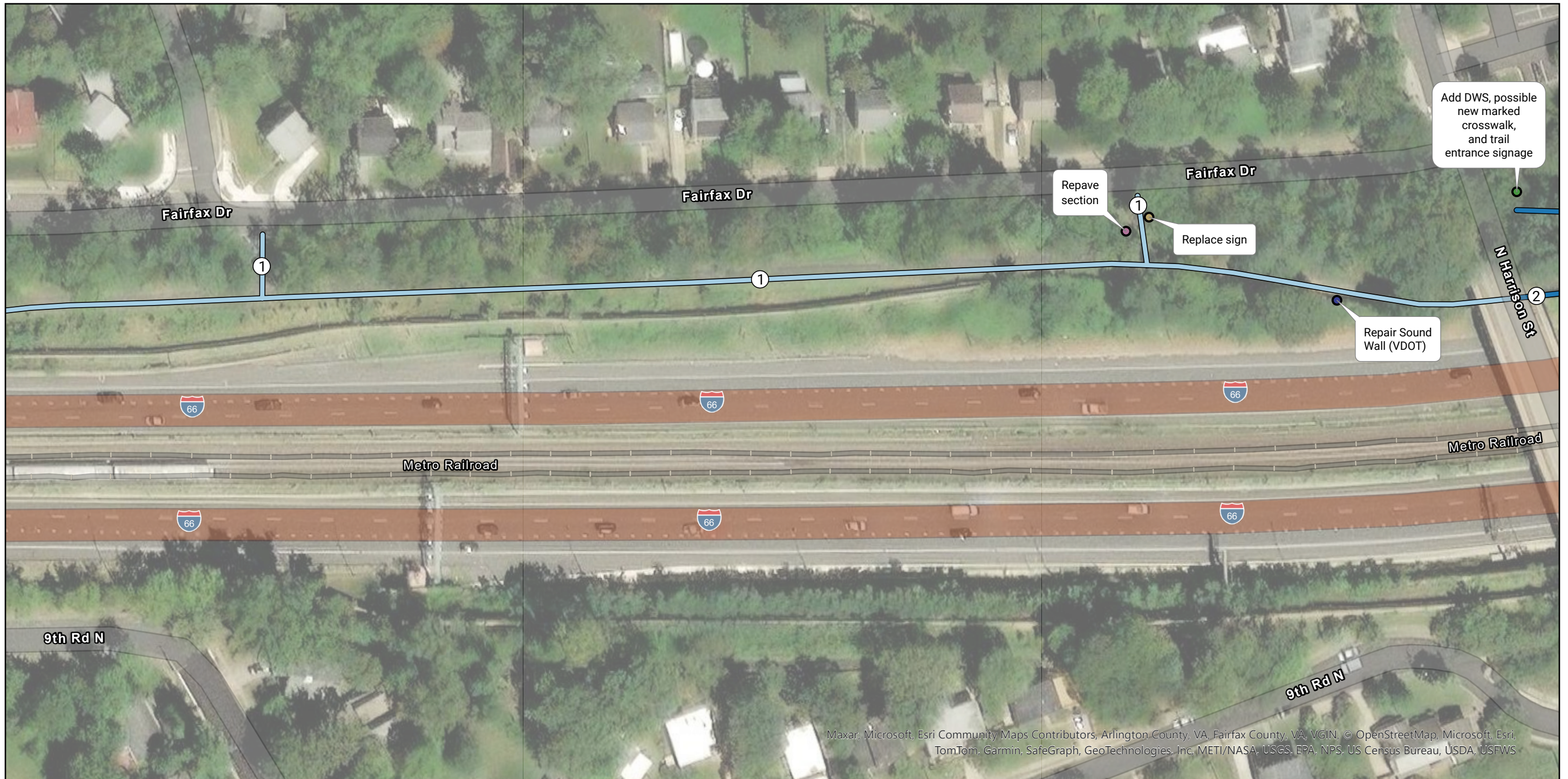


- Segment**
 1 - Bon Air Park
- Issue Type**
- Curb Ramp (2)

- Lighting (1)
- Pavement Condition (1)
- Signage/Wayfinding (3)
- Steep Slope (1)

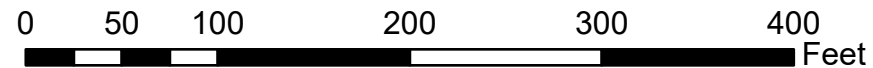


Commonwealth of Virginia, Microsoft, Esri Community Maps Contributors, Arlington County, VA, Fairfax County, VA, VGIN, © OpenStreetMap, Microsoft, Esri, TomTom, Garmin, SafeGraph, GeoTechnologies, Inc, METI/NASA, USGS, EPA, NPS, US Census Bureau, USDA, USFWS



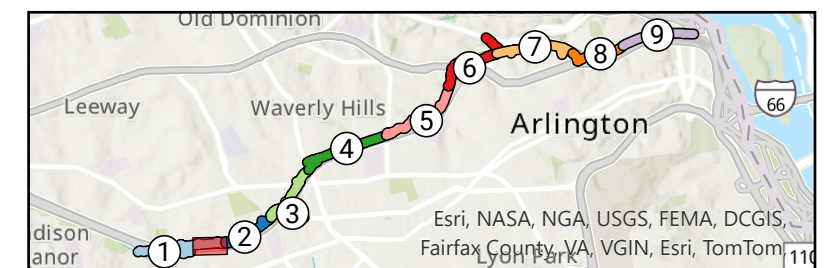
Maxar, Microsoft, Esri Community Maps Contributors, Arlington County, VA, Fairfax County, VA, VGIN, © OpenStreetMap, Microsoft, Esri, TomTom, Garmin, SafeGraph, GeoTechnologies, Inc, METI/NASA, USGS, EPA, NPS, US Census Bureau, USDA, USFWS

OIPI GAP-TA Custis Trail
 Short-Term Recommendation Map Series
 Page 3 of 24

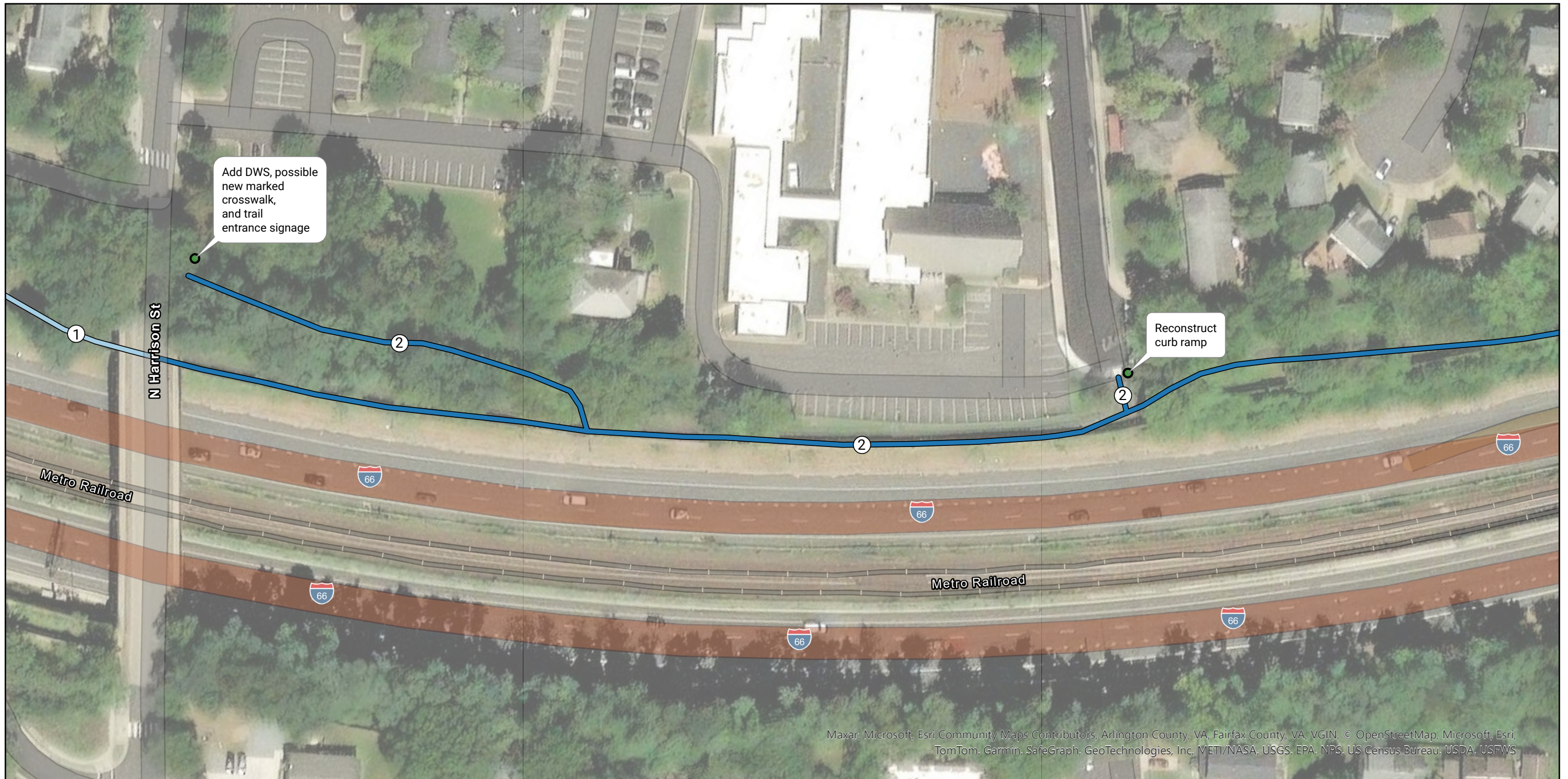


- Segment**
- 1 - Bon Air Park
 - 2 - Bluemont

- Issue Type**
- Curb Ramp (1)
 - Other Amenity (1)
 - Pavement Condition (1)
 - Signage/Wayfinding (1)

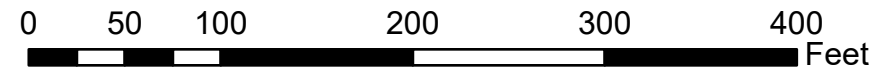


Esri, NASA, NGA, USGS, FEMA, DCGIS, Fairfax County, VA, VGIN, Esri, TomTom

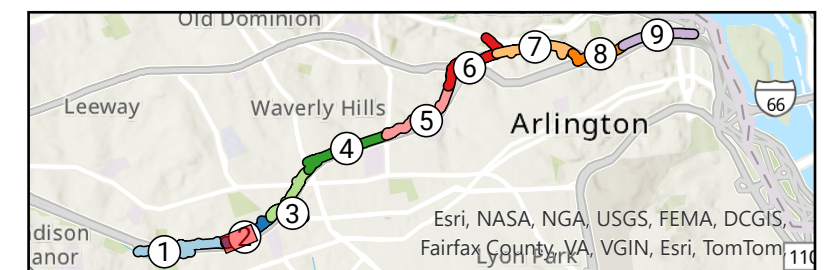


Maxar, Microsoft, Esri Community Maps Contributors, Arlington County, VA, Fairfax County, VA, VGIN, © OpenStreetMap, Microsoft, Esri, TomTom, Garmin, SafeGraph, GeoTechnologies, Inc, METI/NASA, USGS, EPA, NPS, US Census Bureau, USDA, USFWS

OIPI GAP-TA Custis Trail
 Short-Term Recommendation Map Series
 Page 4 of 24



- Segment**
- 1 - Bon Air Park
 - 2 - Bluemont
- Issue Type**
- Curb Ramp (2)

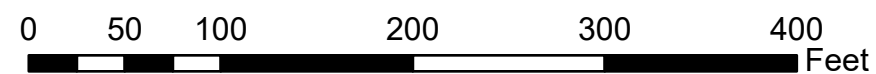


Esri, NASA, NGA, USGS, FEMA, DCGIS, Fairfax County, VA, VGIN, Esri, TomTom



Maxar, Microsoft, Esri Community Maps Contributors, Arlington County, VA, Fairfax County, VA, VGIN, © OpenStreetMap, Microsoft, Esri, TomTom, Garmin, SafeGraph, GeoTechnologies, Inc, METI/NASA, USGS, EPA, NPS, US Census Bureau, USDA, USFWS

OIPI GAP-TA Custis Trail
 Short-Term Recommendation Map Series
 Page 5 of 24

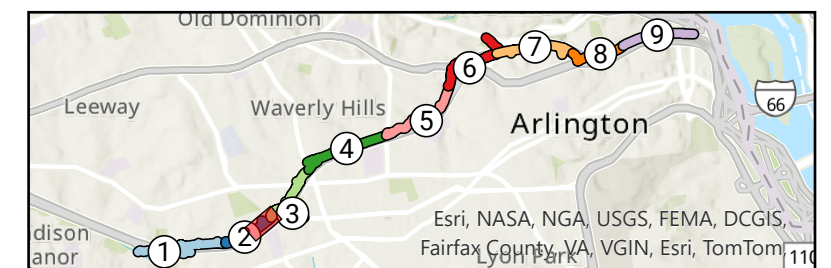


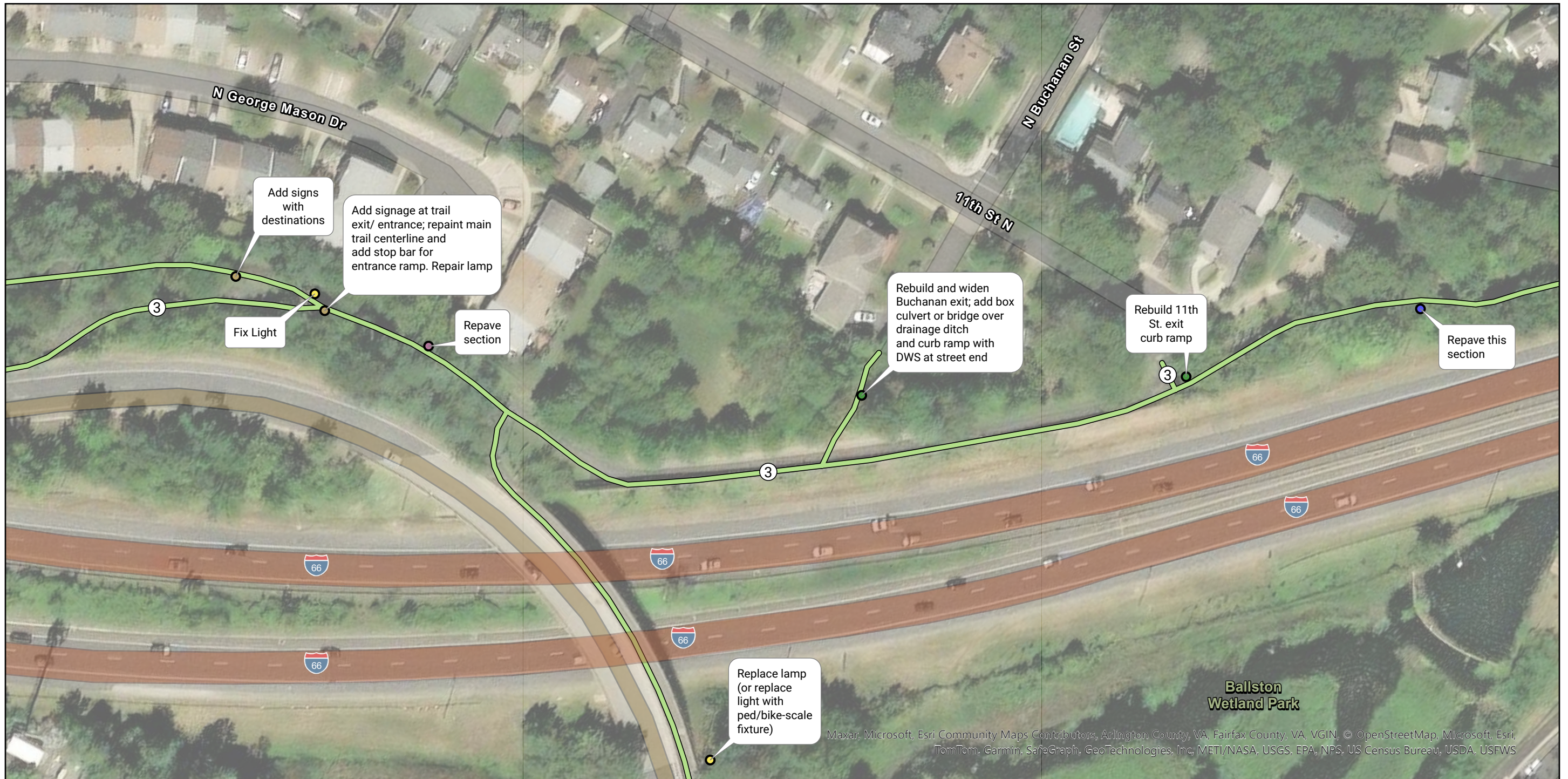
Segment

- 2 - Bluemont
- 3 - Waycroft-Woodlawn

Issue Type

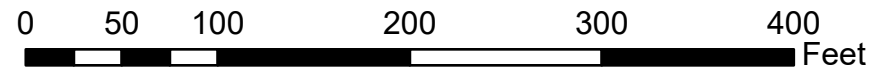
- Curb Ramp (2)
- Drainage/Ponding (1)
- Other Amenity (1)
- Signage/Wayfinding (2)





Maxar, Microsoft, Esri Community Maps Contributors, Arlington County, VA, Fairfax County, VA, VGIN, © OpenStreetMap, Microsoft, Esri, TomTom, Garmin, SafeGraph, GeoTechnologies, Inc, METI/NASA, USGS, EPA, NPS, US Census Bureau, USDA, USFWS

OIPI GAP-TA Custis Trail
 Short-Term Recommendation Map Series
 Page 6 of 24



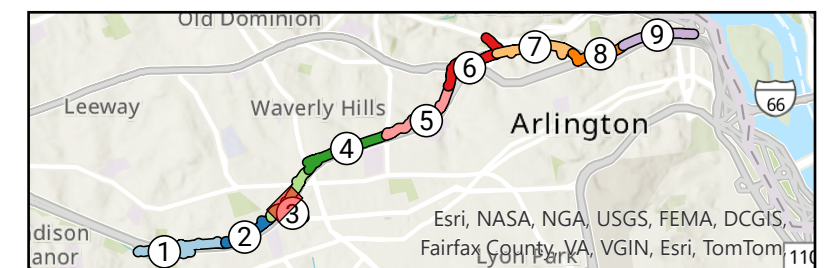
Segment

3 - Waycroft-Woodlawn

Issue Type

● Curb Ramp (2)

- Lighting (2)
- Pavement Condition (1)
- Signage/Wayfinding (2)
- Tree/Rooting (1)

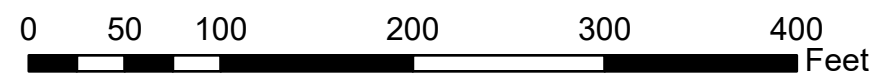


Esri, NASA, NGA, USGS, FEMA, DCGIS, Fairfax County, VA, VGIN, Esri, TomTom

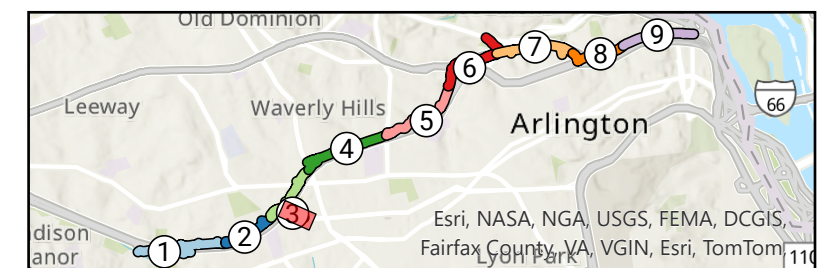


Esri Community Maps Contributors, DCGIS, Arlington County, VA, Fairfax County, VA, VGIN, © OpenStreetMap, Microsoft, Esri, TomTom, Garmin, SafeGraph, GeoTechnologies, Inc. METI/NASA, USGS, EPA, NPS, US Census Bureau, USDA, USFWS, Maxar, Microsoft

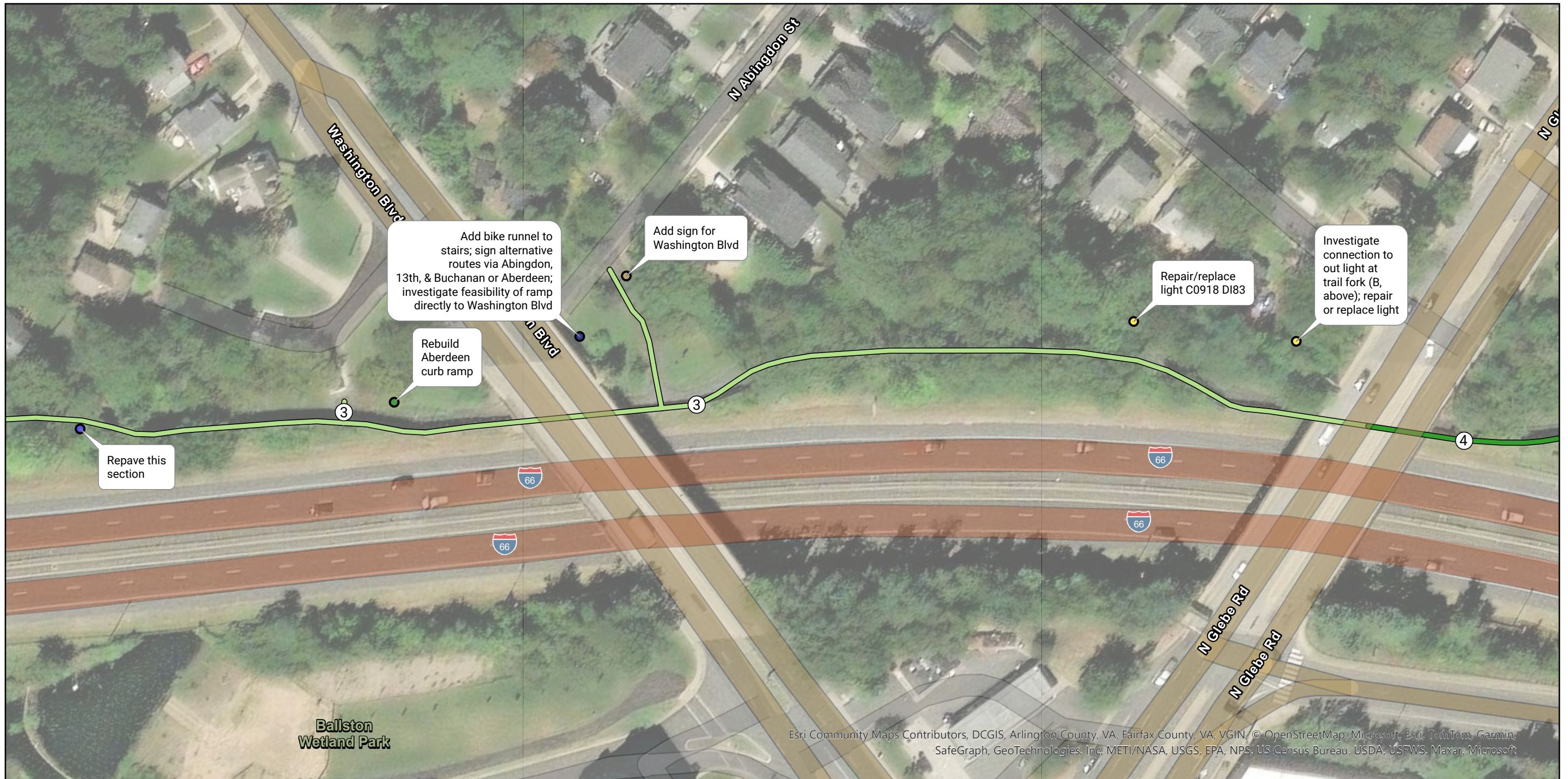
OIPI GAP-TA Custis Trail
 Short-Term Recommendation Map Series
 Page 7 of 24



- Segment**
 3 - Waycroft-Woodlawn
- Issue Type**
- Curb Ramp (1)
 - Lighting (1)



Esri, NASA, NGA, USGS, FEMA, DCGIS, Fairfax County, VA, VGIN, Esri, TomTom

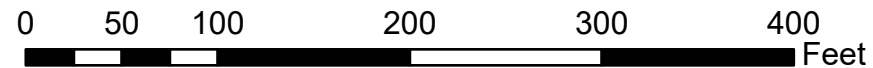


Esri Community Maps Contributors, DCGIS, Arlington County, VA, Fairfax County, VA, VGIN, © OpenStreetMap, Microsoft, Esri, TomTom, Garmin, SafeGraph, GeoTechnologies, Inc, METI/NASA, USGS, EPA, NPS, US Census Bureau, USDA, USFWS, Maxar, Microsoft

OIPI GAP-TA Custis Trail

Short-Term Recommendation Map Series

Page 8 of 24



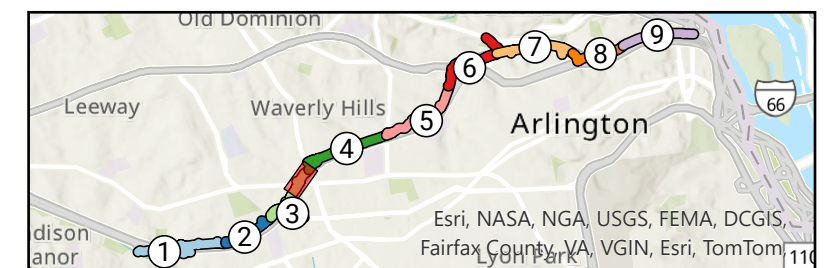
Segment

- 3 - Waycroft-Woodlawn
- 4 - Waverly Hills

Issue Type

- Curb Ramp (1)

- Lighting (2)
- Other Amenity (1)
- Signage/Wayfinding (1)
- Tree/Rooting (1)



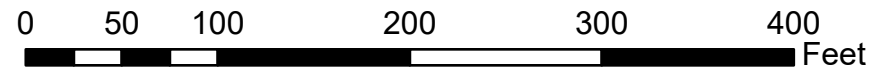
Esri, NASA, NGA, USGS, FEMA, DCGIS, Fairfax County, VA, VGIN, Esri, TomTom



OIPI GAP-TA Custis Trail

Short-Term Recommendation Map Series

Page 9 of 24

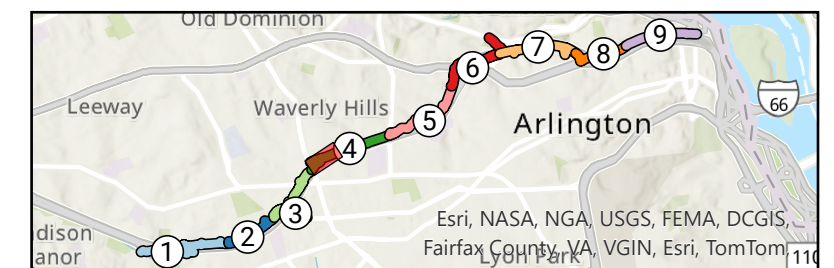


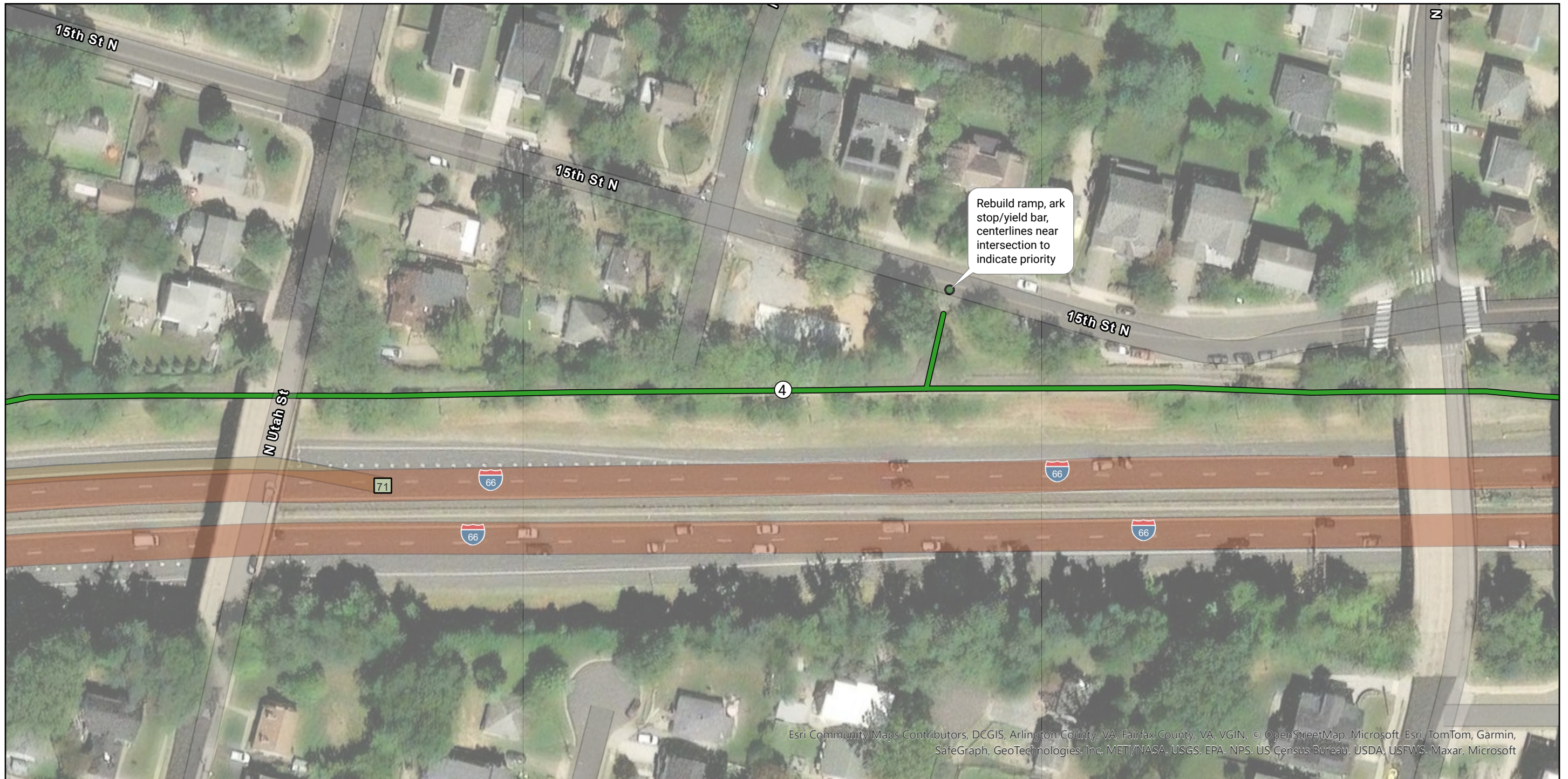
Segment

- 3 - Waycroft-Woodlawn
- 4 - Waverly Hills

Issue Type

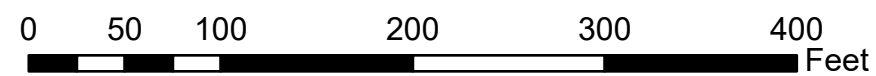
- Curb Ramp (5)
- Lighting (2)
- Other Amenity (1)
- Pavement Condition (1)
- Signage/Wayfinding (2)
- Other (2)



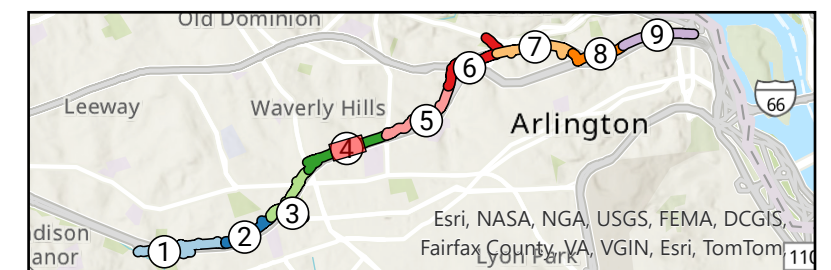


Esri Community Maps Contributors, DCGIS, Arlington County, VA, Fairfax County, VA, VGIN, © OpenStreetMap, Microsoft, Esri, TomTom, Garmin, SafeGraph, GeoTechnologies, Inc. METI/NASA, USGS, EPA, NPS, US Census Bureau, USDA, USFWS, Maxar, Microsoft

OIPI GAP-TA Custis Trail
 Short-Term Recommendation Map Series
 Page 10 of 24



- Segment**
 — 4 - Waverly Hills
- Issue Type**
 ● Curb Ramp (1)

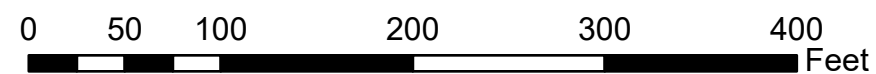


Esri, NASA, NGA, USGS, FEMA, DCGIS, Fairfax County, VA, VGIN, Esri, TomTom



Esri Community Maps Contributors, DCGIS, Arlington County, VA, Fairfax County, VA, VGIN, © OpenStreetMap, Microsoft, Esri, TomTom, Garmin, SafeGraph, GeoTechnologies, Inc, METI/NASA, USGS, EPA, NPS, US Census Bureau, USDA, USFWS, Maxar, Microsoft

OIPI GAP-TA Custis Trail
 Short-Term Recommendation Map Series
 Page 11 of 24

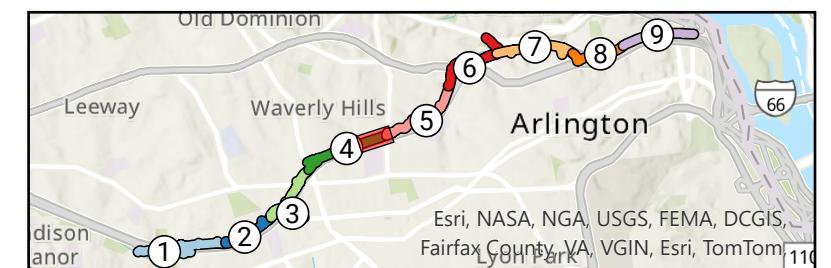


Segment

- 4 - Waverly Hills
- 5 - Cherry Valley Park

Issue Type

- Dropoff/Sewer Grates (1)
- Lighting (1)
- Tree/Rooting (1)

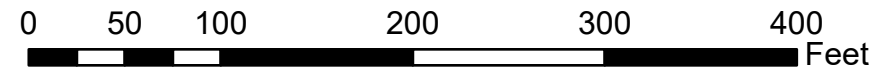


Esri, NASA, NGA, USGS, FEMA, DCGIS, Fairfax County, VA, VGIN, Esri, TomTom, 110



Esri Community Maps Contributors, DCGIS, Arlington County, VA, Fairfax County, VA, VGIN, © OpenStreetMap, Microsoft, Esri, TomTom, Garmin, SafeGraph, GeoTechnologies, Inc. METI/NASA, USGS, EPA, NPS, US Census Bureau, USDA, USFWS, Maxar, Microsoft

OIPI GAP-TA Custis Trail
 Short-Term Recommendation Map Series
 Page 12 of 24

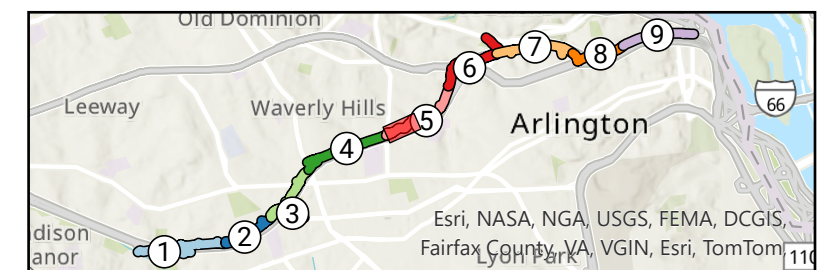


Segment

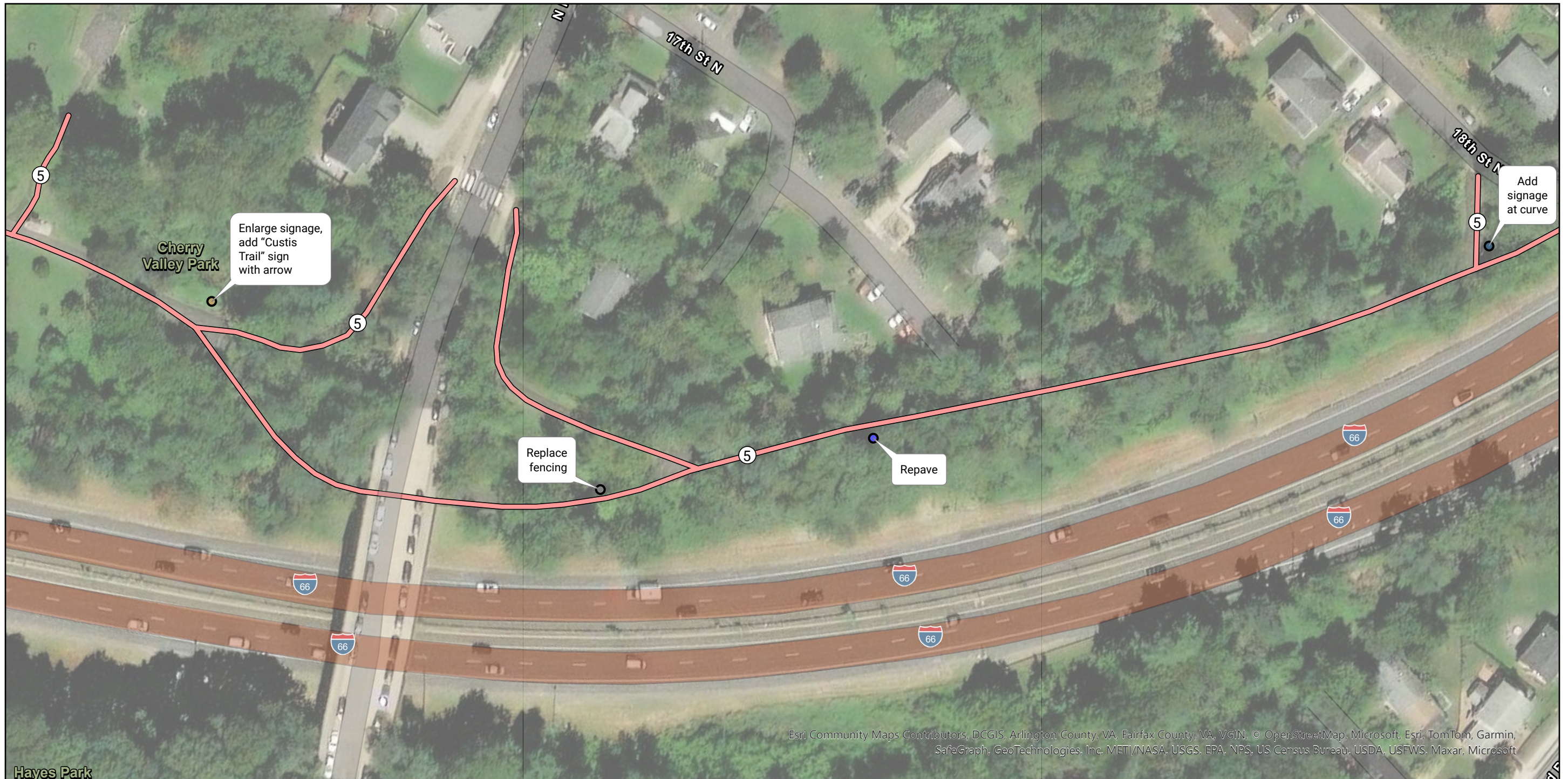
— 5 - Cherry Valley Park

Issue Type

- Dropoff/Sewer Grates (1)
- Signage/Wayfinding (2)
- Tree/Rooting (1)

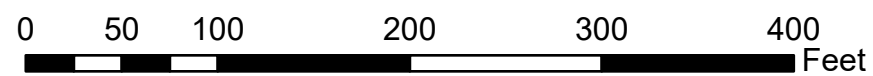


Esri, NASA, NGA, USGS, FEMA, DCGIS, Fairfax County, VA, VGIN, Esri, TomTom



Esri Community Maps Contributors, DCGIS, Arlington County, VA, Fairfax County, VA, VGIN, © OpenStreetMap, Microsoft, Esri, TomTom, Garmin, SafeGraph, GeoTechnologies, Inc. METI/NASA, USGS, EPA, NPS, US Census Bureau, USDA, USFWS, Maxar, Microsoft

OIPI GAP-TA Custis Trail
 Short-Term Recommendation Map Series
 Page 13 of 24



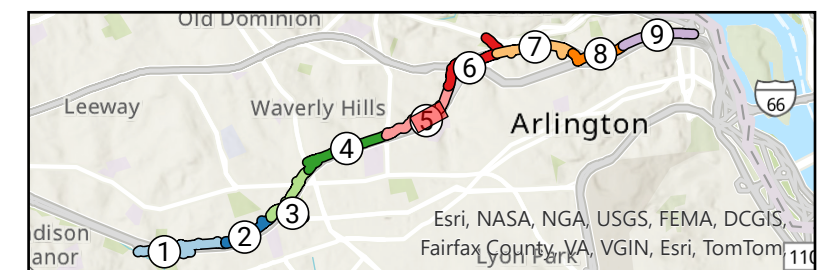
Segment

— 5 - Cherry Valley Park

Issue Type

● Signage/Wayfinding (1)

- Tree/Rooting (1)
- Visibility/Blind Spots (1)
- Other (1)



Esri, NASA, NGA, USGS, FEMA, DCGIS, Fairfax County, VA, VGIN, Esri, TomTom

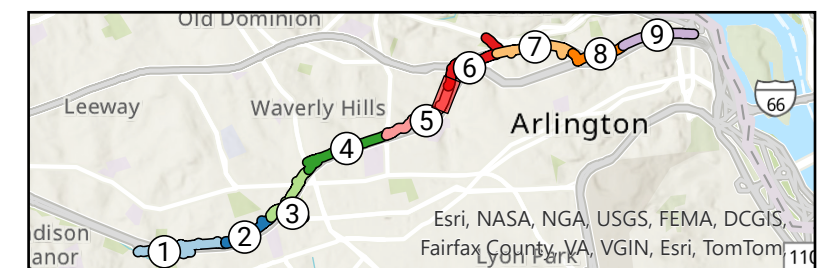


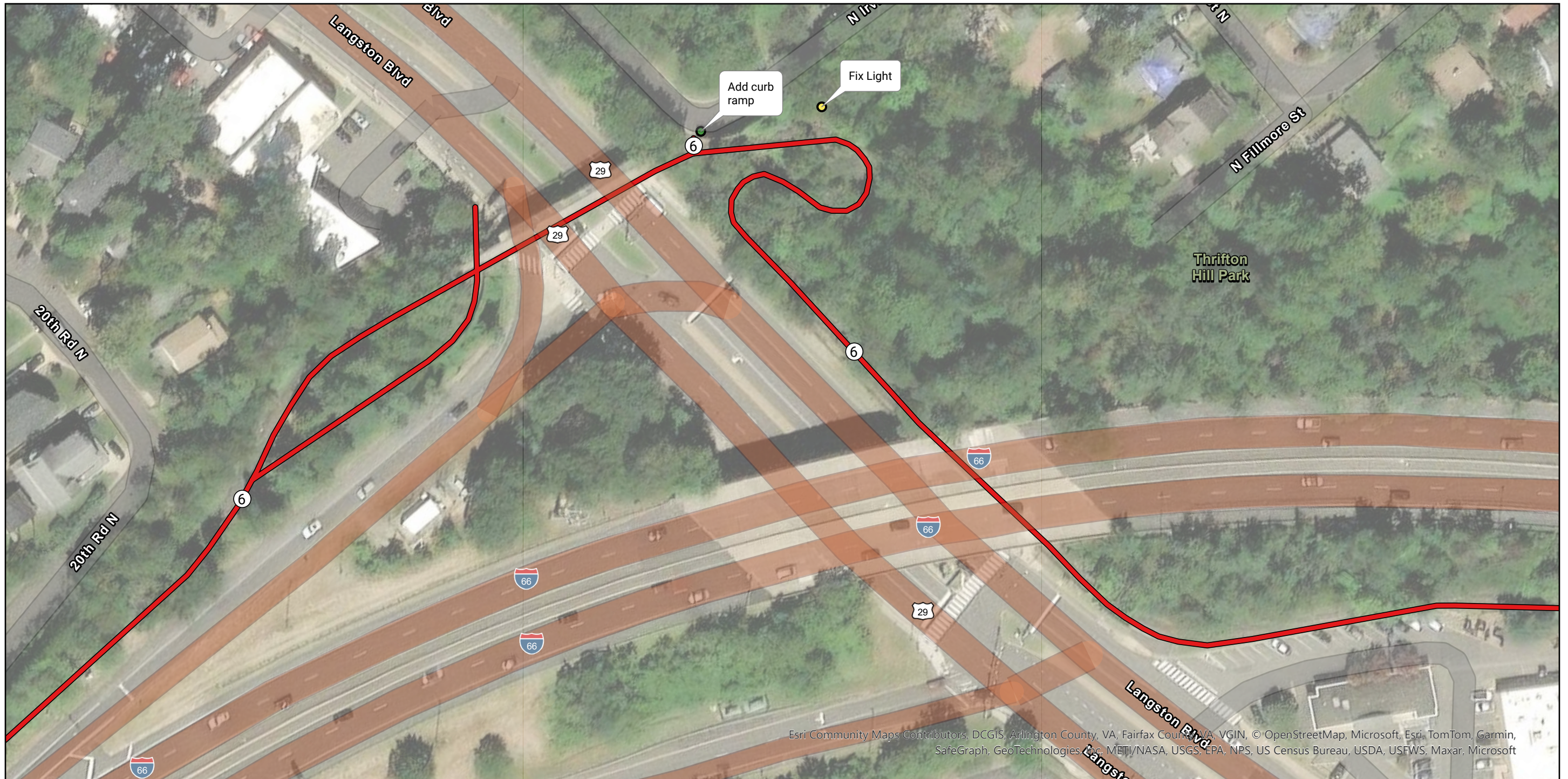
Esri Community Maps Contributors, DCGIS, Arlington County, VA, Fairfax County, VA, VGIN, © OpenStreetMap, Microsoft, Esri, TomTom, Garmin, SafeGraph, GeoTechnologies, Rd METI/NASA, USGS, EPA, NPS, US Census Bureau, USDA, USFWS, Maxar, Microsoft

OIPI GAP-TA Custis Trail
 Short-Term Recommendation Map Series
 Page 14 of 24



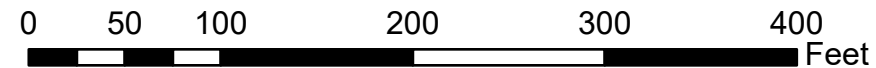
- Segment**
- 5 - Cherry Valley Park
 - 6 - Thrifton Hill Park
- Issue Type**
- Visibility/Blind Spots (1)



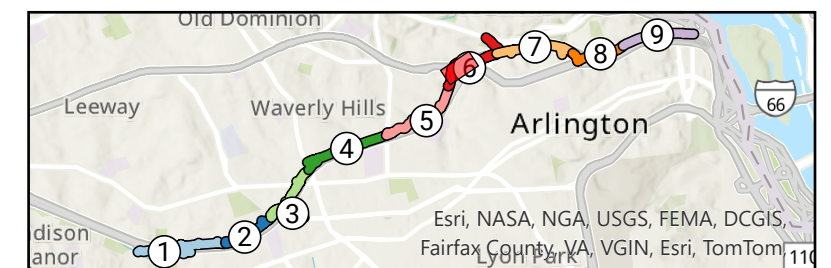


Esri Community Maps Contributors, DCGIS, Arlington County, VA, Fairfax County, VA, VGIN, © OpenStreetMap, Microsoft, Esri, TomTom, Garmin, SafeGraph, GeoTechnologies, Inc, METI/NASA, USGS, EPA, NPS, US Census Bureau, USDA, USFWS, Maxar, Microsoft

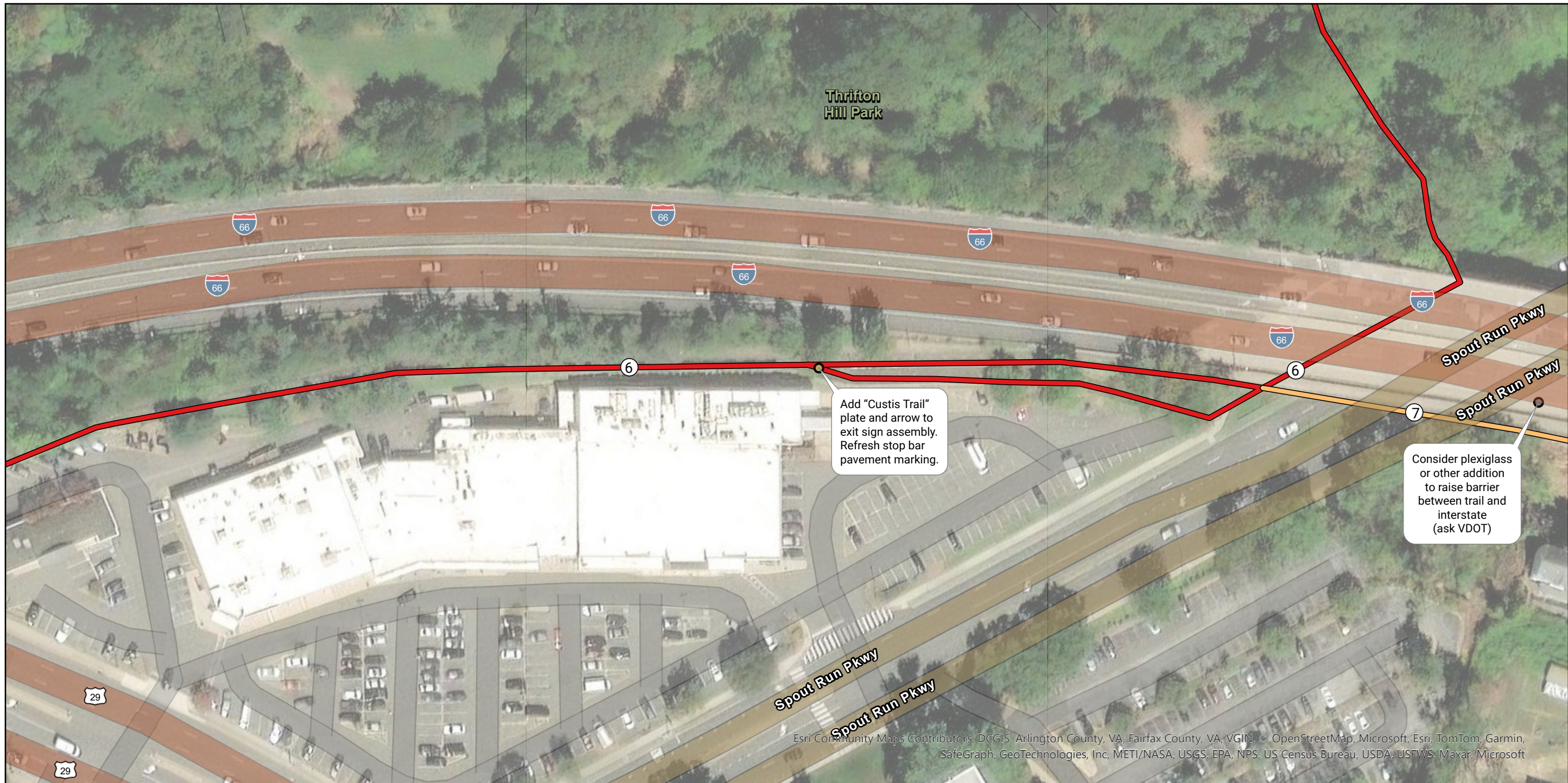
OIPI GAP-TA Custis Trail
 Short-Term Recommendation Map Series
 Page 15 of 24



- Segment**
 — 6 - Thrifton Hill Park
- Issue Type**
- Curb Ramp (1)
 - Lighting (1)

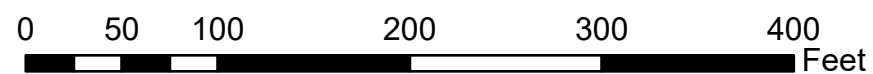


Esri, NASA, NGA, USGS, FEMA, DCGIS, Fairfax County, VA, VGIN, Esri, TomTom



Esri Community Maps Contributors, DCGIS, Arlington County, VA, Fairfax County, VA, VGIN, © OpenStreetMap, Microsoft, Esri, TomTom, Garmin, SafeGraph, GeoTechnologies, Inc, METI/NASA, USGS, EPA, NPS, US Census Bureau, USDA, USEFWS, Maxar, Microsoft

OIPI GAP-TA Custis Trail Short-Term Recommendation Map Series Page 16 of 24

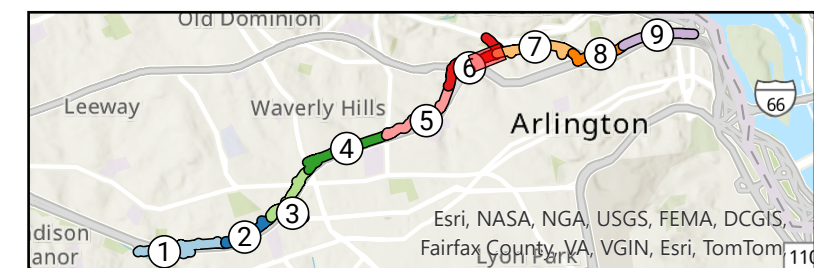


Segment

- 6 - Thrifton Hill Park
- 7 - Spout Run

Issue Type

- Signage/Wayfinding (1)
- Other (1)



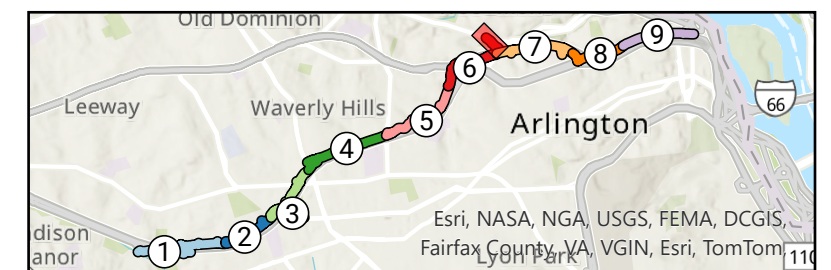
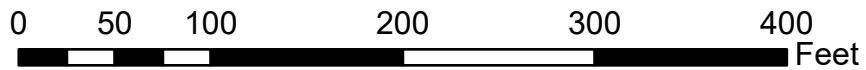
Esri, NASA, NGA, USGS, FEMA, DCGIS, Fairfax County, VA, VGIN, Esri, TomTom



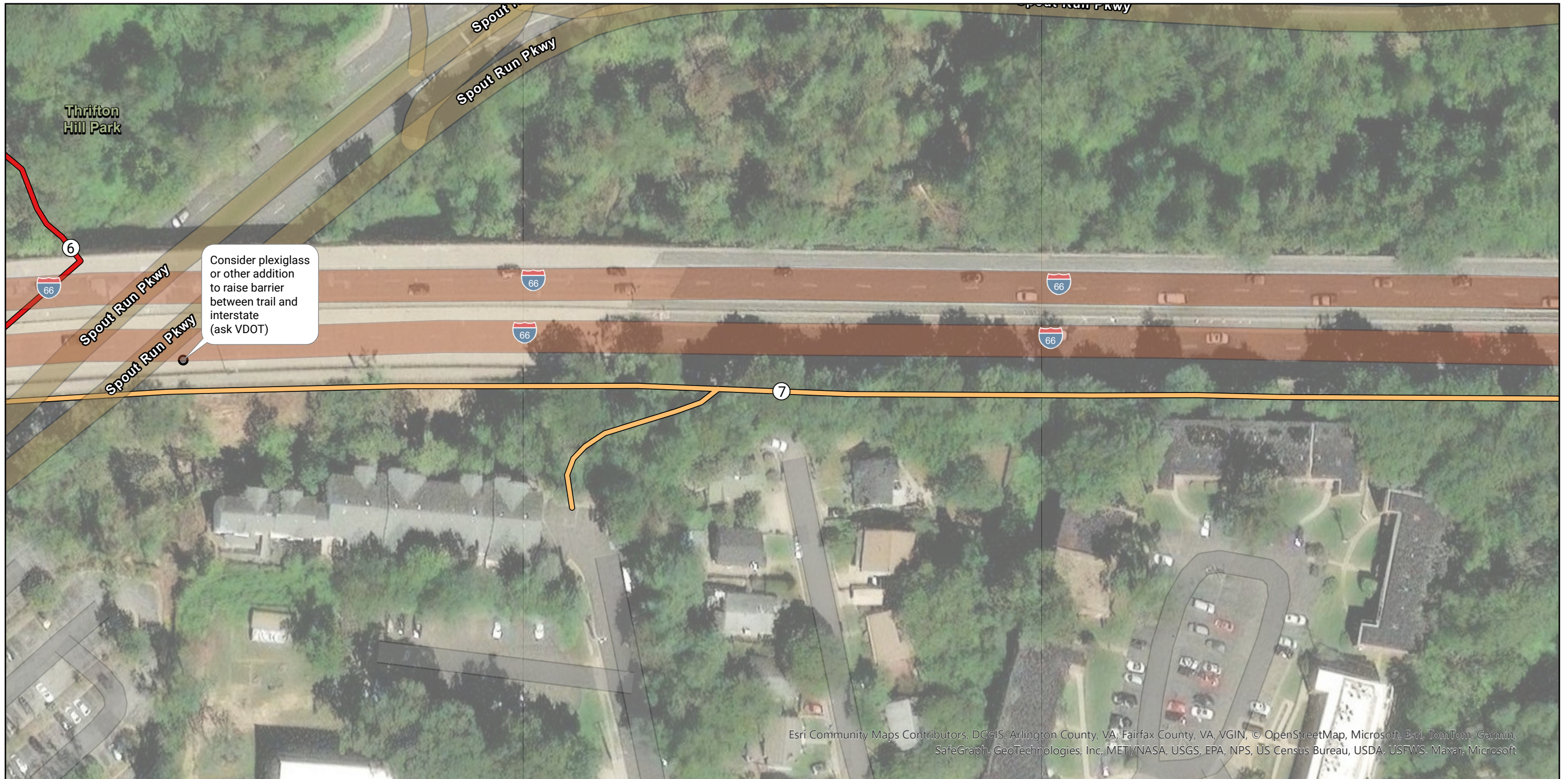
OIPI GAP-TA Custis Trail
 Short-Term Recommendation Map Series
 Page 17 of 24



- Segment**
- 6 - Thrifton Hill Park
 - 7 - Spout Run
 - Other (1)



Esri Community Maps Contributors, DCGIS, Arlington County, VA, Fairfax County, VA, VGIN, © OpenStreetMap, Microsoft, Esri, TomTom, Garmin, SafeGraph, GeoTechnologies, Inc. METI/NASA, USGS, EPA, NPS, US Census Bureau, USDA, USFWS, Maxar, Microsoft

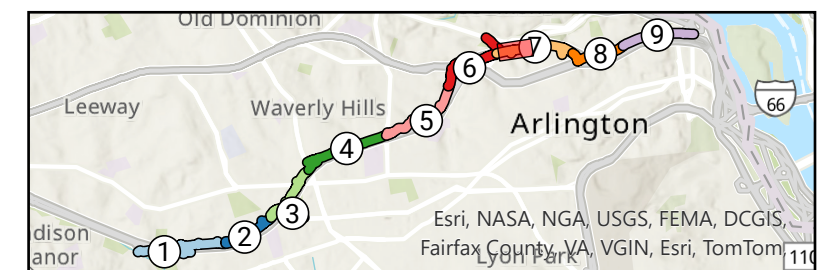
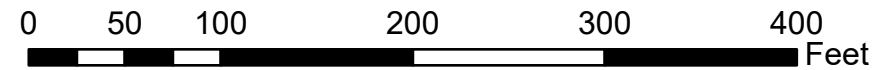


Esri Community Maps Contributors, DCGIS, Arlington County, VA, Fairfax County, VA, VGIN, © OpenStreetMap, Microsoft, Esri, TomTom, Garmin, SafeGraph, GeoTechnologies, Inc., METI/NASA, USGS, EPA, NPS, US Census Bureau, USDA, USFWS, Maxar, Microsoft

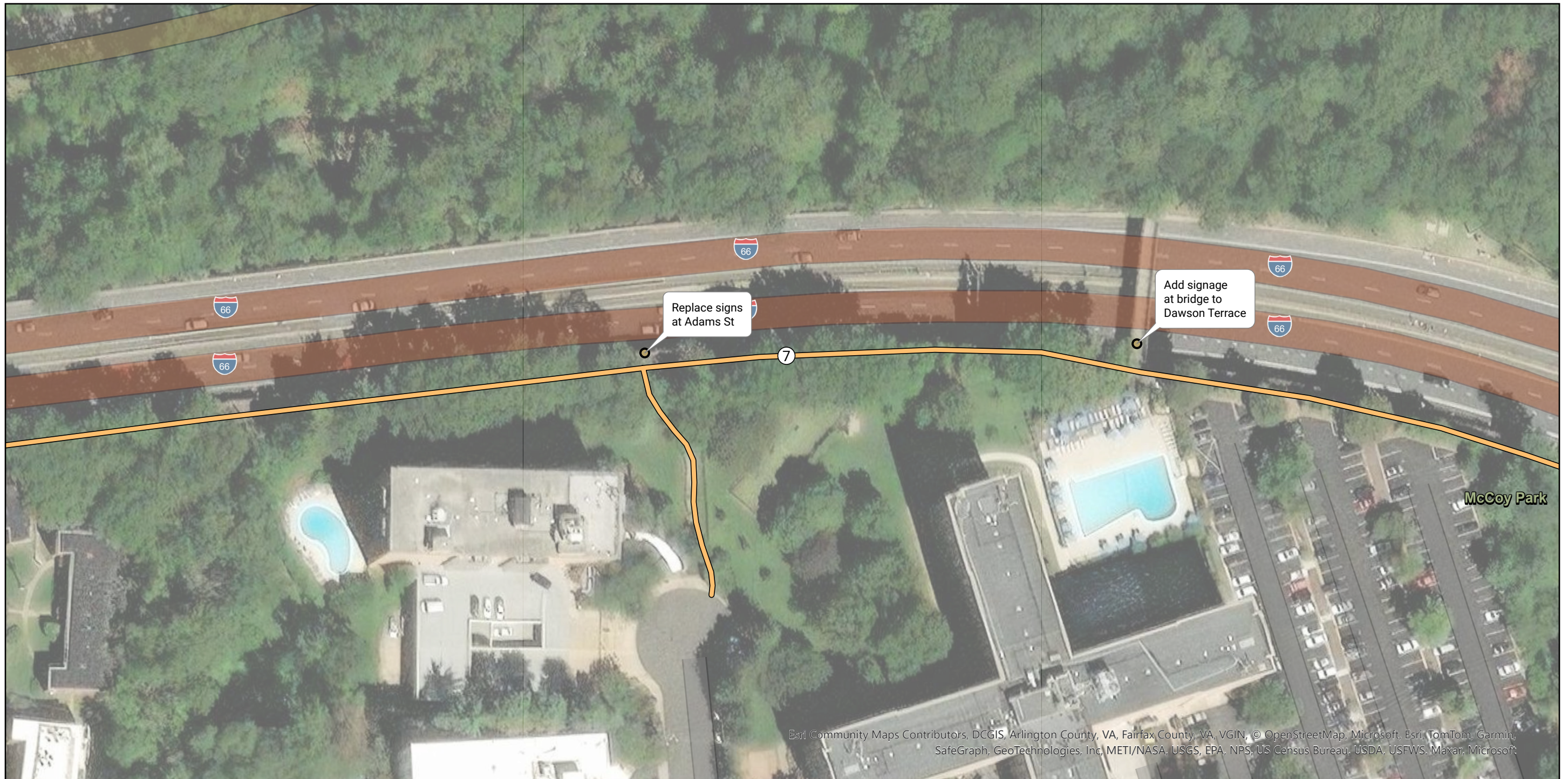
OIPI GAP-TA Custis Trail
 Short-Term Recommendation Map Series
 Page 18 of 24



- Segment**
- 6 - Thrifton Hill Park
 - 7 - Spout Run
 - Other (1)



Esri, NASA, NGA, USGS, FEMA, DCGIS, Fairfax County, VA, VGIN, Esri, TomTom



Esri, Community Maps Contributors, DCGIS, Arlington County, VA, Fairfax County, VA, VGIN, © OpenStreetMap, Microsoft, Esri, TomTom, Garmin, SafeGraph, GeoTechnologies, Inc, METI/NASA, USGS, EPA, NPS, US Census Bureau, USDA, USFWS, Maxar, Microsoft

OIPI GAP-TA Custis Trail
 Short-Term Recommendation Map Series
 Page 19 of 24

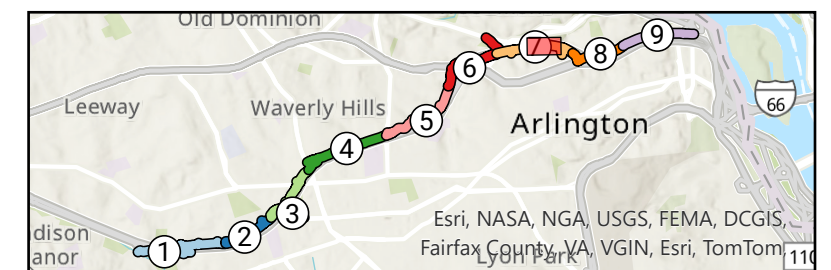


Segment

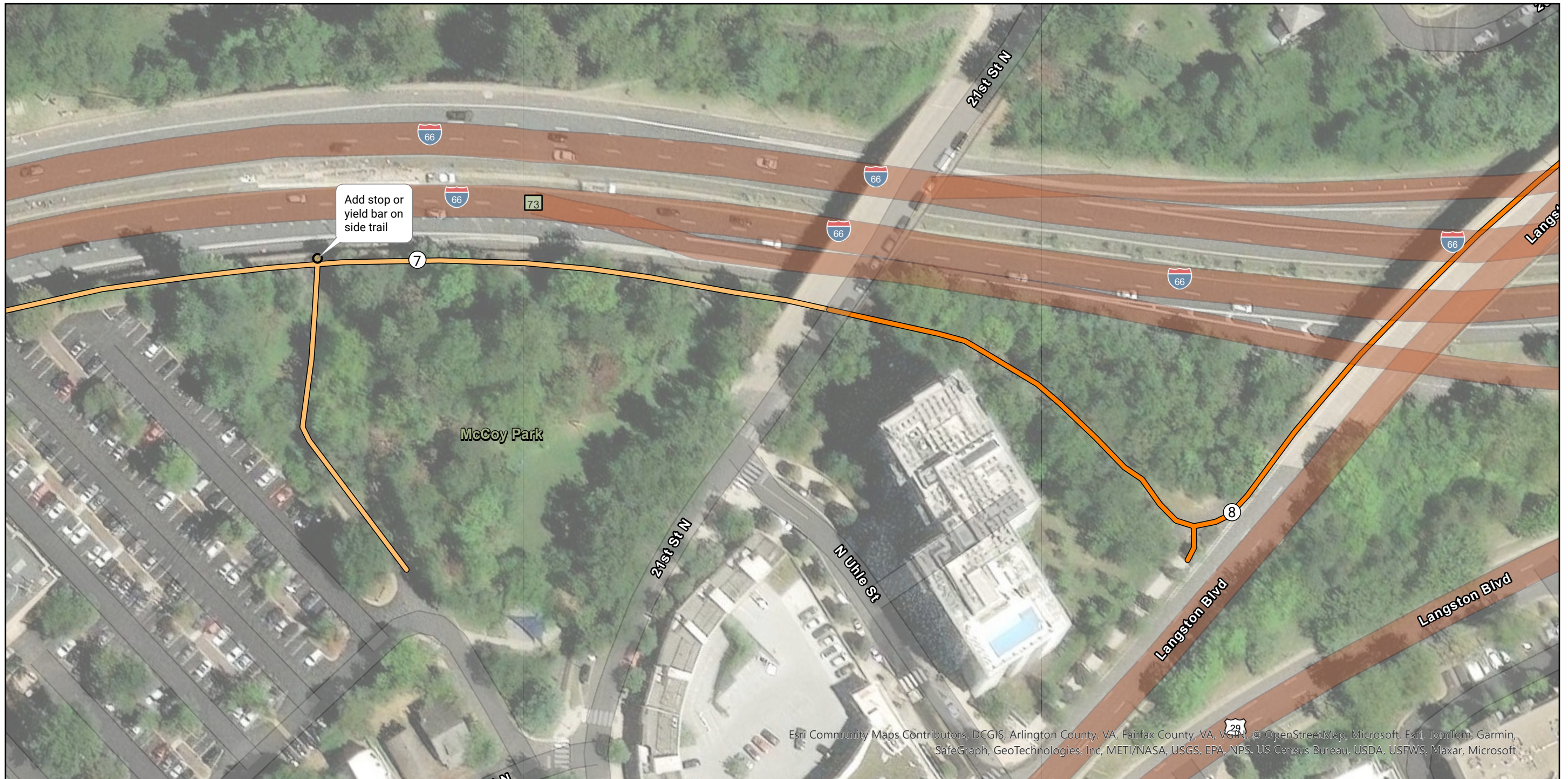
— 7 - Spout Run

Issue Type

● Signage/Wayfinding (2)



Esri, NASA, NGA, USGS, FEMA, DCGIS, Fairfax County, VA, VGIN, Esri, TomTom

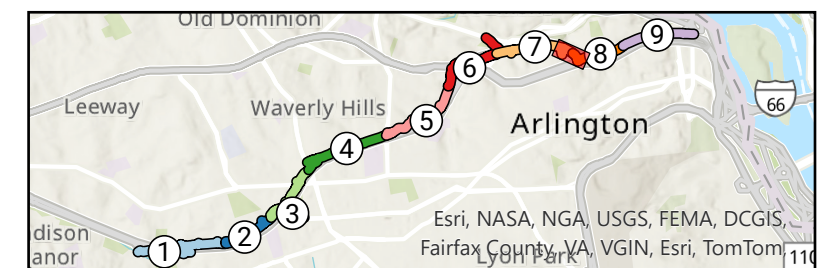
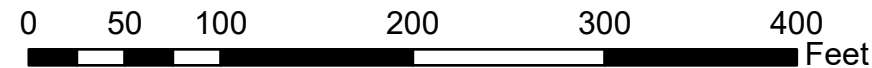


Esri Community Maps Contributors, DCGIS, Arlington County, VA, Fairfax County, VA, VGIN, © OpenStreetMap, Microsoft, Esri, TomTom, Garmin, SafeGraph, GeoTechnologies, Inc, METI/NASA, USGS, EPA, NPS, US Census Bureau, USDA, USFWS, Maxar, Microsoft

OIPI GAP-TA Custis Trail
 Short-Term Recommendation Map Series
 Page 20 of 24



- Segment**
- 7 - Spout Run
 - 8 - North Highlands
- Issue Type**
- Signage/Wayfinding (1)

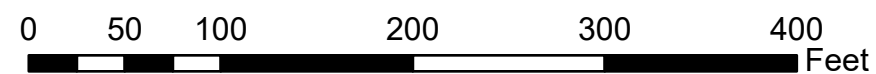


Esri, NASA, NGA, USGS, FEMA, DCGIS, Fairfax County, VA, VGIN, Esri, TomTom

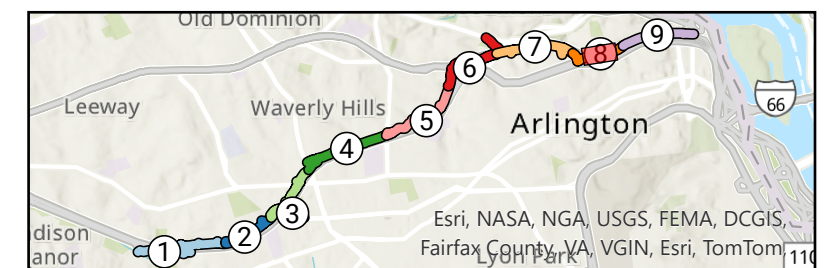


Esri Community Maps Contributors, DCGIS, Arlington County, VA, Fairfax County, VA, VGIN, OpenStreetMap, Microsoft, Esri, TomTom, Garmin, SafeGraph, GeoTechnologies, Inc. METI/NASA, USGS, EPA, NPS, US Census Bureau, USDA, USFWS, Maxar, Microsoft

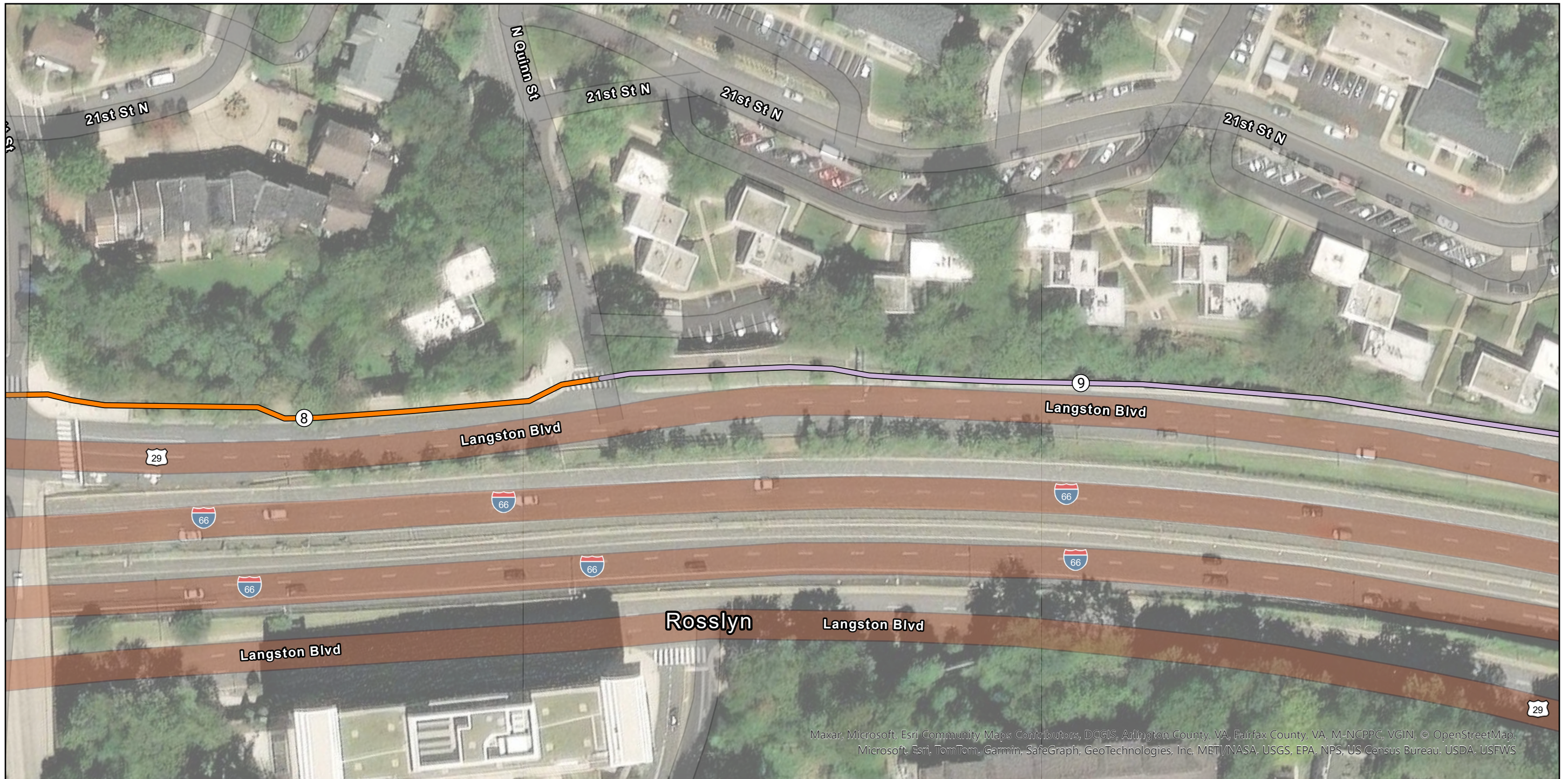
OIPI GAP-TA Custis Trail
 Short-Term Recommendation Map Series
 Page 21 of 24



- Segment**
 — 8 - North Highlands
- Issue Type**
 ● Curb Ramp (1)



Esri, NASA, NGA, USGS, FEMA, DCGIS, Fairfax County, VA, VGIN, Esri, TomTom

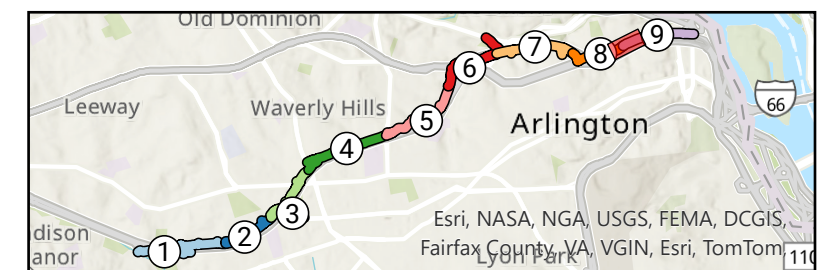
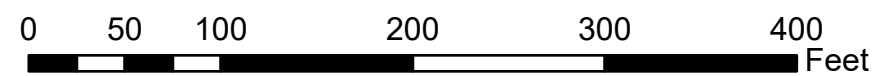


Maxar, Microsoft, Esri, Community Maps Contributors, DCGIS, Arlington County, VA, Fairfax County, VA, M-NCPPC, VGIN, © OpenStreetMap, Microsoft, Esri, TomTom, Garmin, SafeGraph, GeoTechnologies, Inc, METI/NASA, USGS, EPA, NPS, US Census Bureau, USDA, USFWS

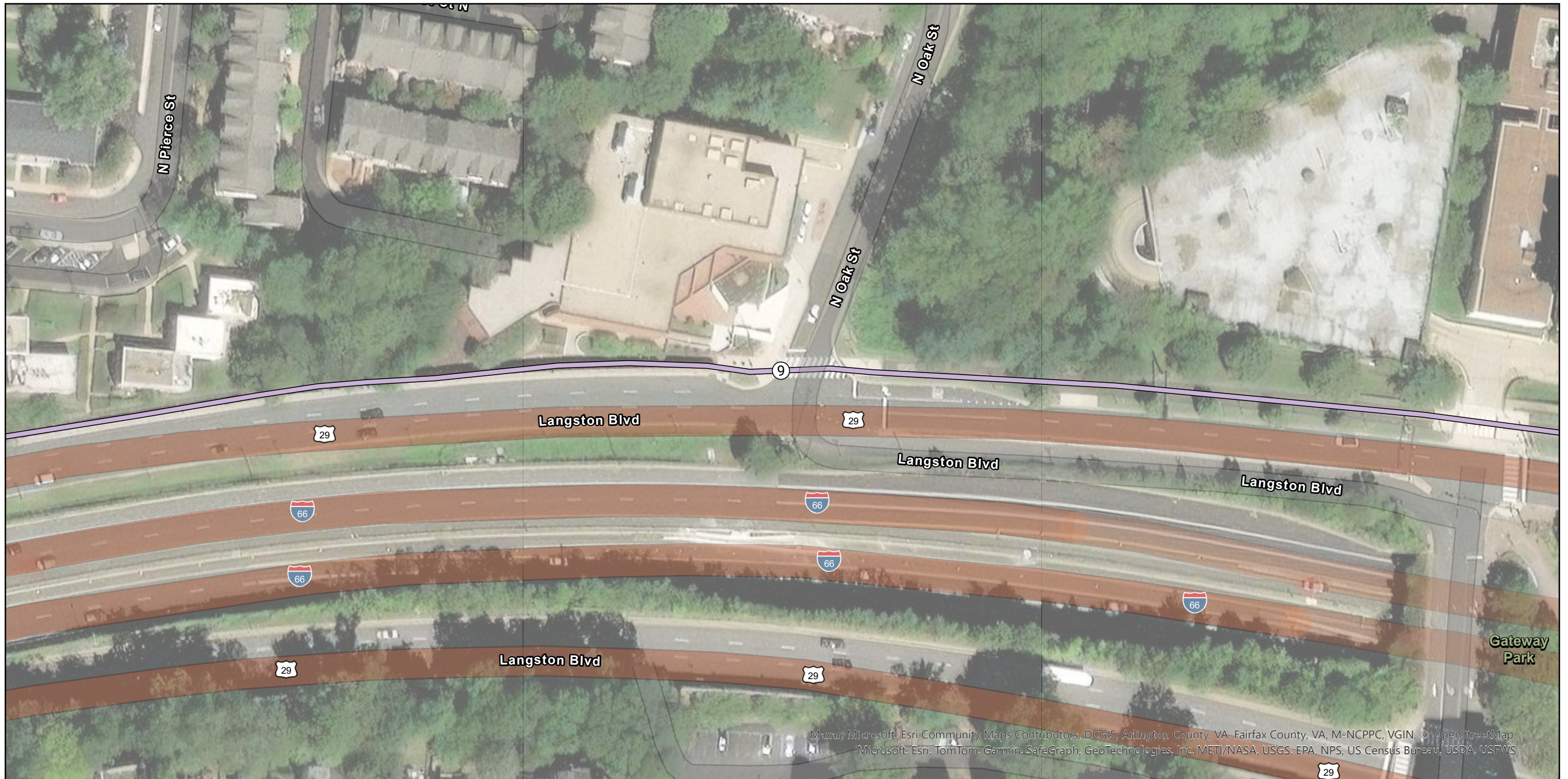
OIPI GAP-TA Custis Trail
 Short-Term Recommendation Map Series
 Page 22 of 24



- Segment**
- 8 - North Highlands
 - 9 - Rosslyn



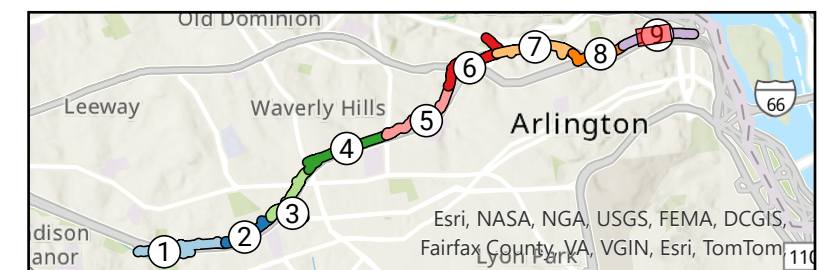
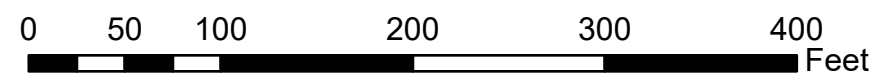
Esri, NASA, NGA, USGS, FEMA, DCGIS, Fairfax County, VA, VGIN, Esri, TomTom

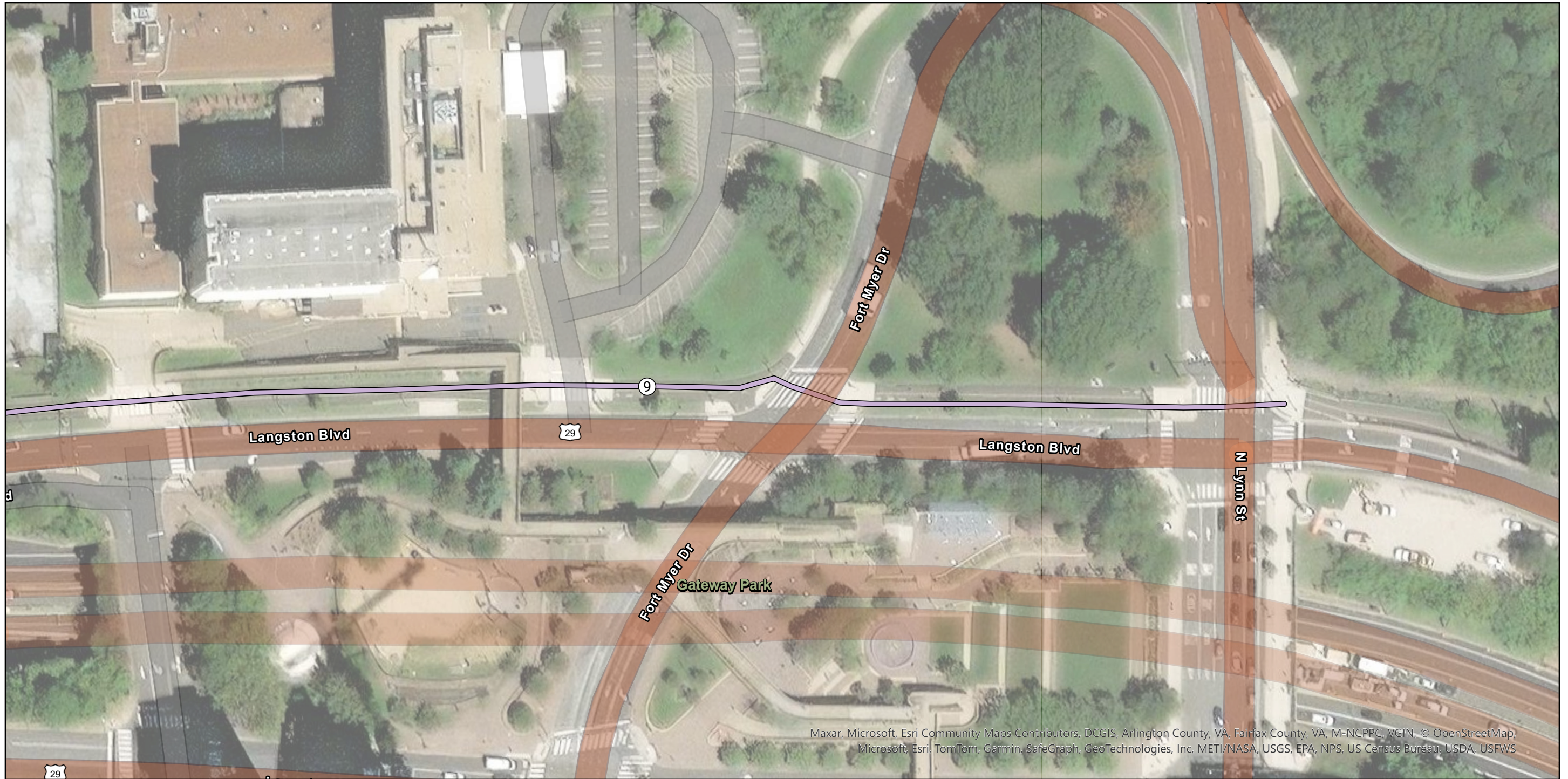


OIPI GAP-TA Custis Trail
 Short-Term Recommendation Map Series
 Page 23 of 24



Segment
 9 - Rosslyn



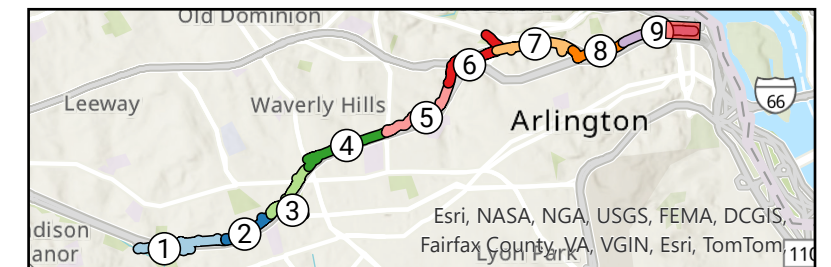
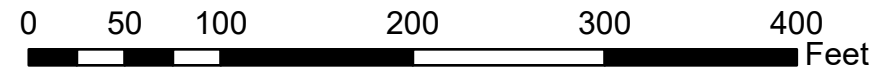


Maxar, Microsoft, Esri Community Maps Contributors, DCGIS, Arlington County, VA, Fairfax County, VA, M-NCPPC, VGIN, © OpenStreetMap, Microsoft, Esri, TomTom, Garmin, SafeGraph, GeoTechnologies, Inc, METI/NASA, USGS, EPA, NPS, US Census Bureau, USDA, USFWS

OIPI GAP-TA Custis Trail
 Short-Term Recommendation Map Series
 Page 24 of 24



Segment
 9 - Rosslyn



Esri, NASA, NGA, USGS, FEMA, DCGIS, Fairfax County, VA, VGIN, Esri, TomTom