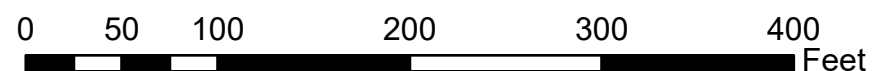


**OIPI GAP-TA Custis Trail**  
 Long-Term Recommendation Map Series  
 Page 1 of 24

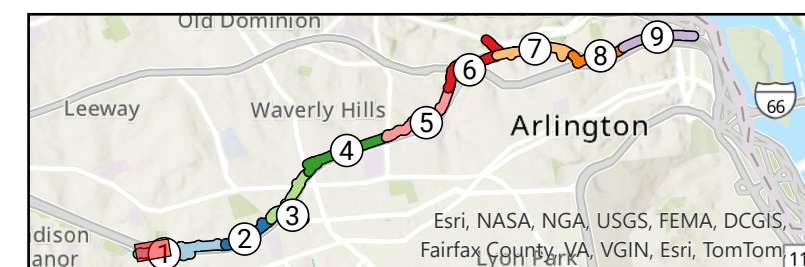


**Segment**

1 - Bon Air Park

**Issue Type**

- Steep Slope (1)
- Trail Width (1)



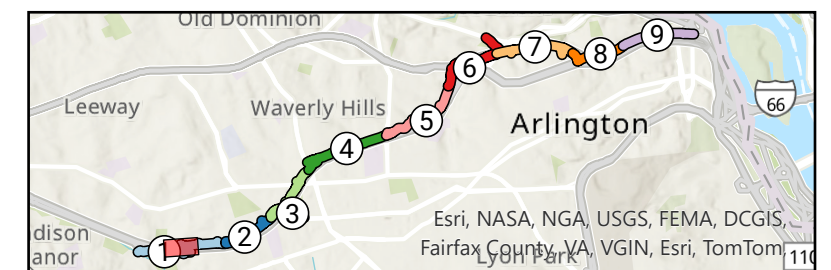
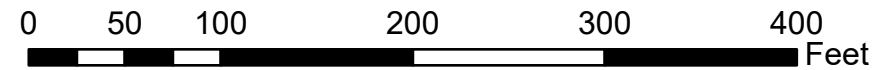


Maxar, Microsoft, Esri Community Maps Contributors, Arlington County, VA, Fairfax County, VA, VGIN, © OpenStreetMap, Microsoft, Esri, TomTom, Garmin, SafeGraph, GeoTechnologies, Inc, METI/NASA, USGS, EPA, NPS, US Census Bureau, USDA, USFWS

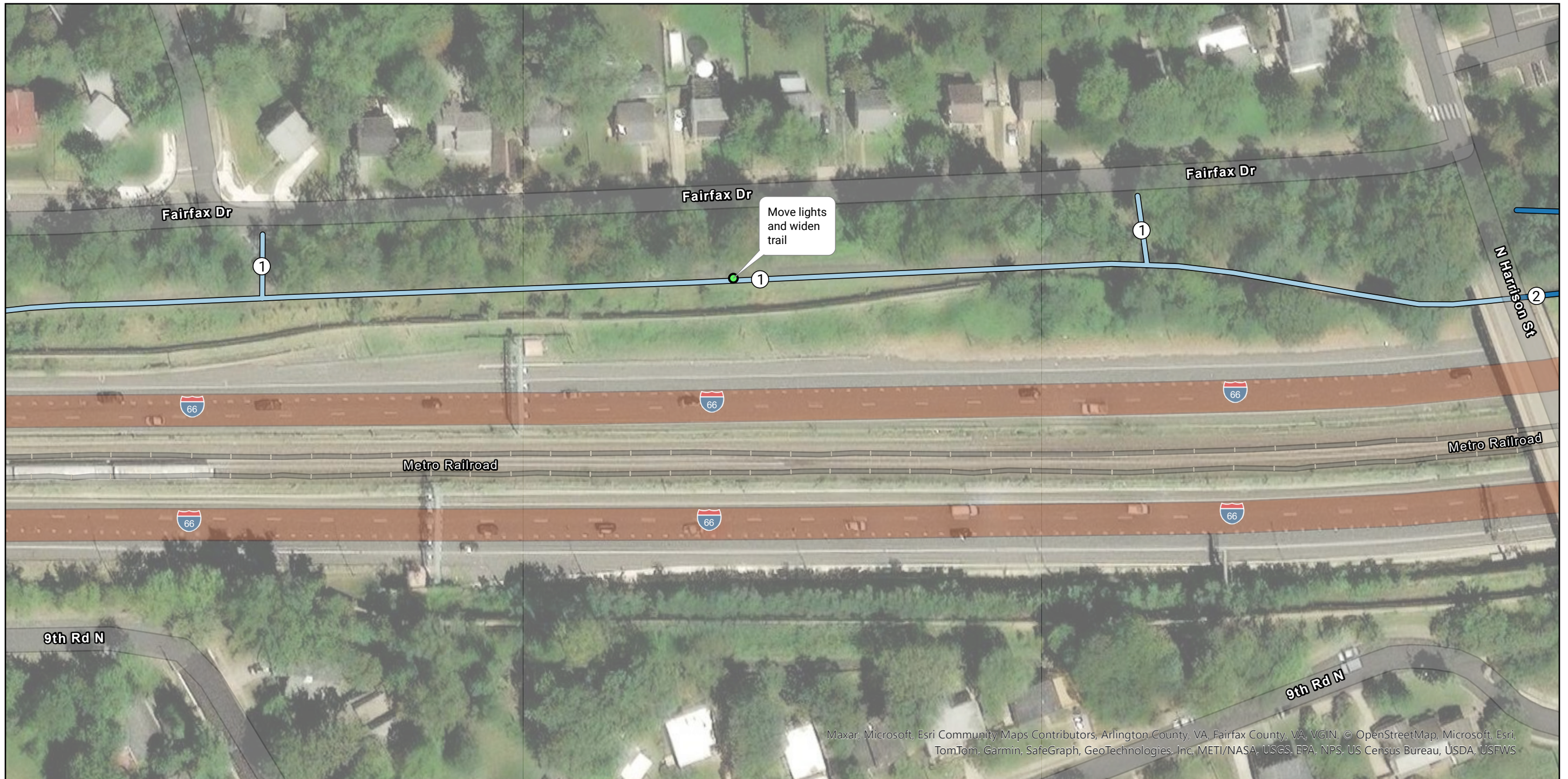
**OIPI GAP-TA Custis Trail**  
 Long-Term Recommendation Map Series  
 Page 2 of 24



- Segment**  
 1 - Bon Air Park
- Issue Type**  
 ● Trail Width (2)

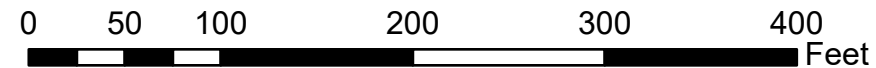


Esri, NASA, NGA, USGS, FEMA, DCGIS, Fairfax County, VA, VGIN, Esri, TomTom

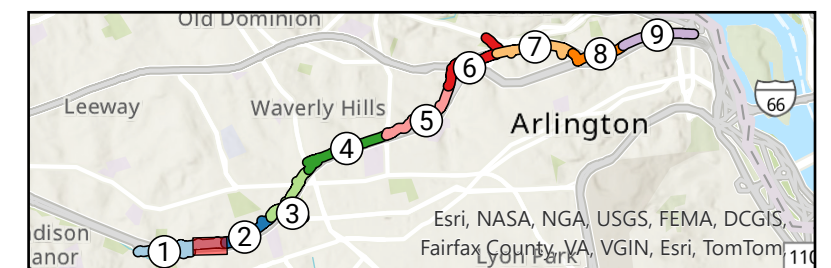


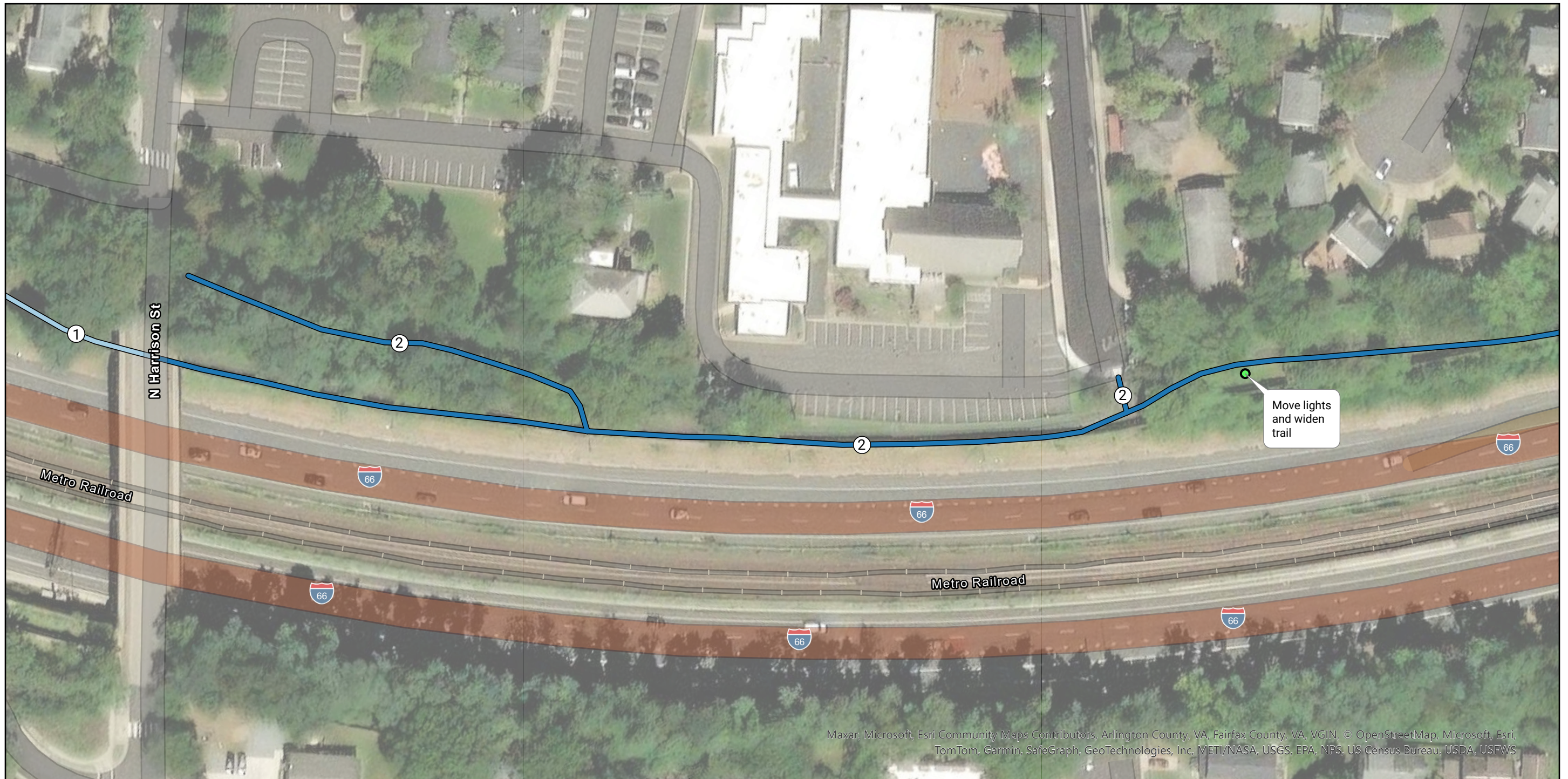
Maxar, Microsoft, Esri Community Maps Contributors, Arlington County, VA, Fairfax County, VA, VGIN, © OpenStreetMap, Microsoft, Esri, TomTom, Garmin, SafeGraph, GeoTechnologies, Inc, METI/NASA, USGS, EPA, NPS, US Census Bureau, USDA, USFWS

**OIPI GAP-TA Custis Trail**  
 Long-Term Recommendation Map Series  
 Page 3 of 24



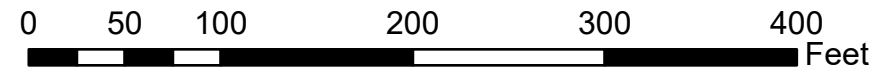
- Segment**
- 1 - Bon Air Park
  - 2 - Bluemont
- Issue Type**
- Trail Width (1)



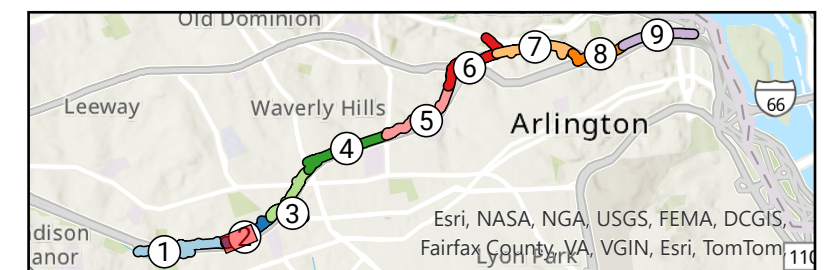


Maxar, Microsoft, Esri Community Maps Contributors, Arlington County, VA, Fairfax County, VA, VGIN, © OpenStreetMap, Microsoft, Esri, TomTom, Garmin, SafeGraph, GeoTechnologies, Inc, METI/NASA, USGS, EPA, NPS, US Census Bureau, USDA, USFWS

**OIPI GAP-TA Custis Trail**  
 Long-Term Recommendation Map Series  
 Page 4 of 24



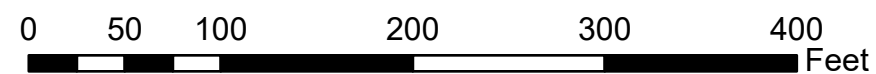
- Segment**
- 1 - Bon Air Park
  - 2 - Bluemont
- Issue Type**
- Trail Width (1)



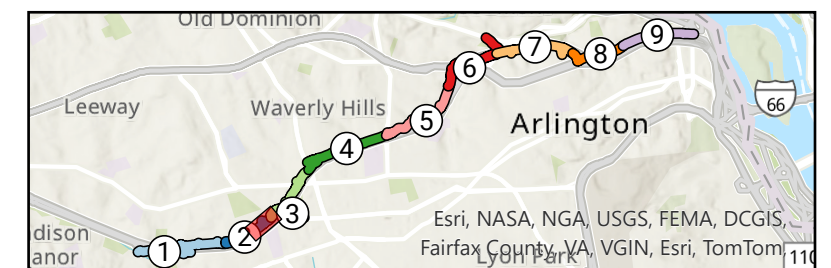


Maxar, Microsoft, Esri Community Maps Contributors, Arlington County, VA, Fairfax County, VA, VGIN, © OpenStreetMap, Microsoft, Esri, TomTom, Garmin, SafeGraph, GeoTechnologies, Inc, METI/NASA, USGS, EPA, NPS, US Census Bureau, USDA, USFWS

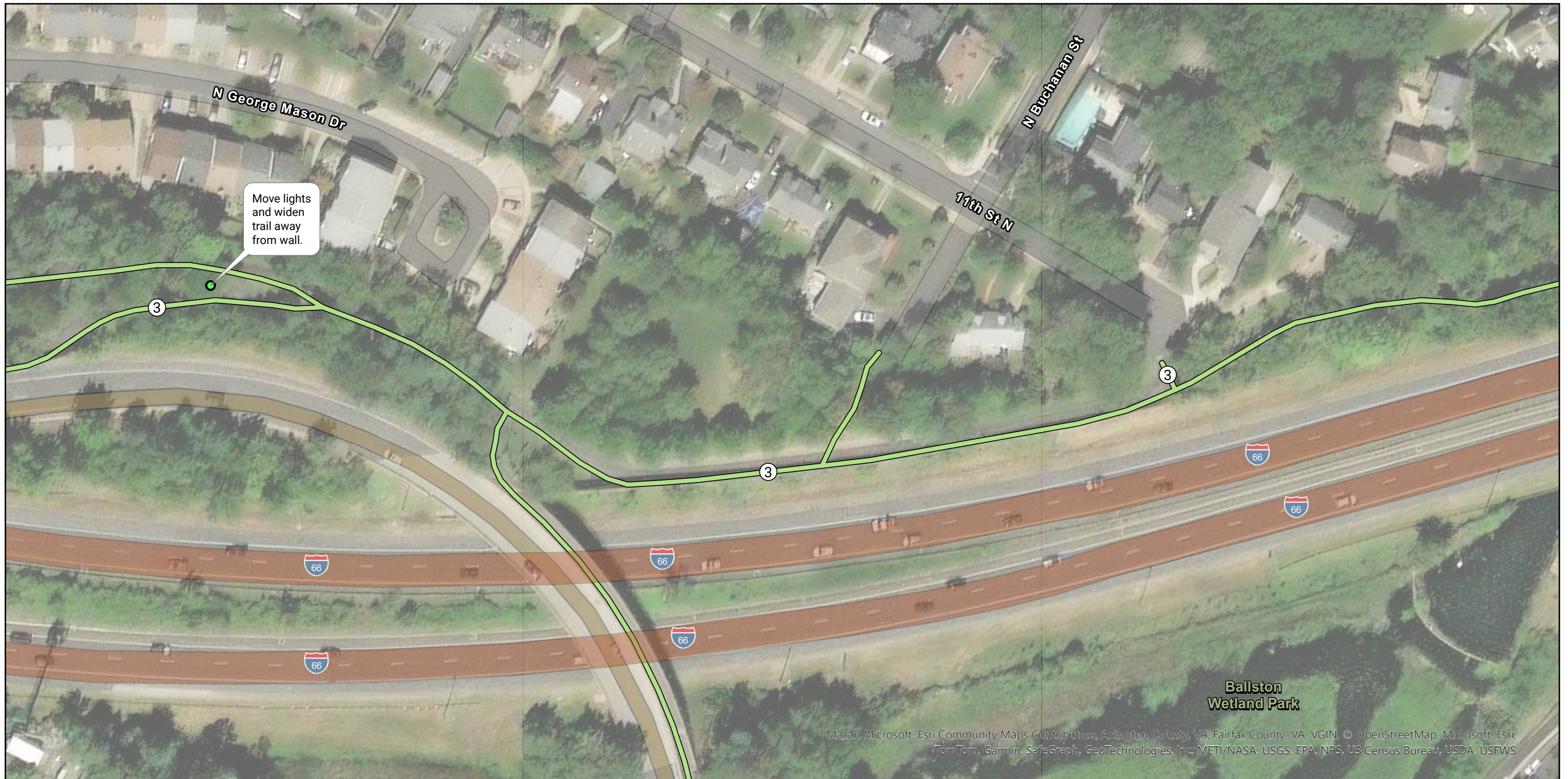
**OIPI GAP-TA Custis Trail**  
 Long-Term Recommendation Map Series  
 Page 5 of 24



- Segment**
- 2 - Bluemont
  - 3 - Waycroft-Woodlawn
- Issue Type**
- Trail Width (2)

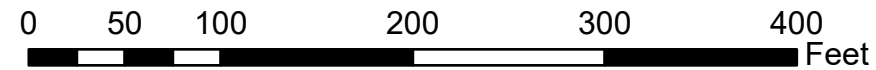


Esri, NASA, NGA, USGS, FEMA, DCGIS, Fairfax County, VA, VGIN, Esri, TomTom

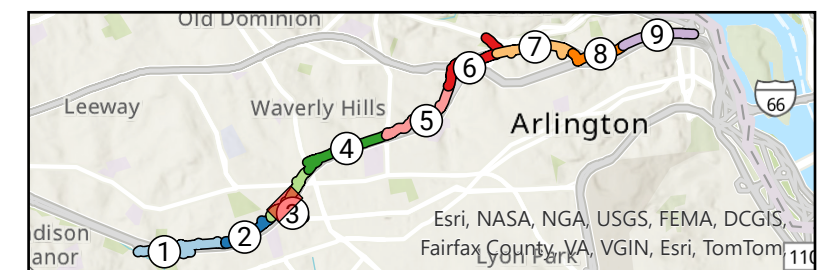


Maxar, Microsoft, Esri Community Maps Contributors, Arlington County, VA, Fairfax County, VA, VGIN, © OpenStreetMap, Microsoft, Esri, TomTom, Garmin, SafeGraph, GeoTechnologies, Inc, METI/NASA, USGS, EPA, NPS, US Census Bureau, USDA, USFWS

**OIPI GAP-TA Custis Trail**  
 Long-Term Recommendation Map Series  
 Page 6 of 24



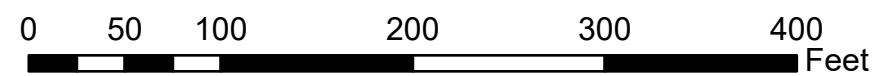
- Segment**  
 — 3 - Waycroft-Woodlawn
- Issue Type**  
 ● Trail Width (1)



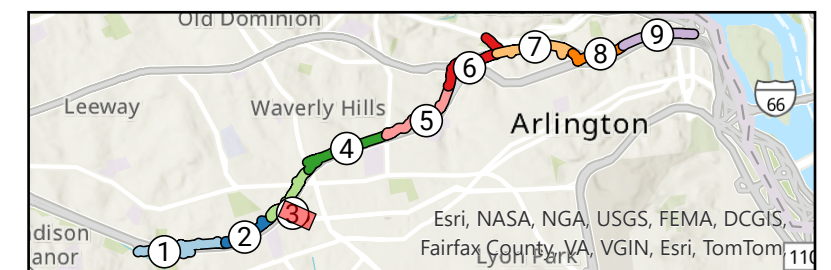
Esri, NASA, NGA, USGS, FEMA, DCGIS, Fairfax County, VA, VGIN, Esri, TomTom

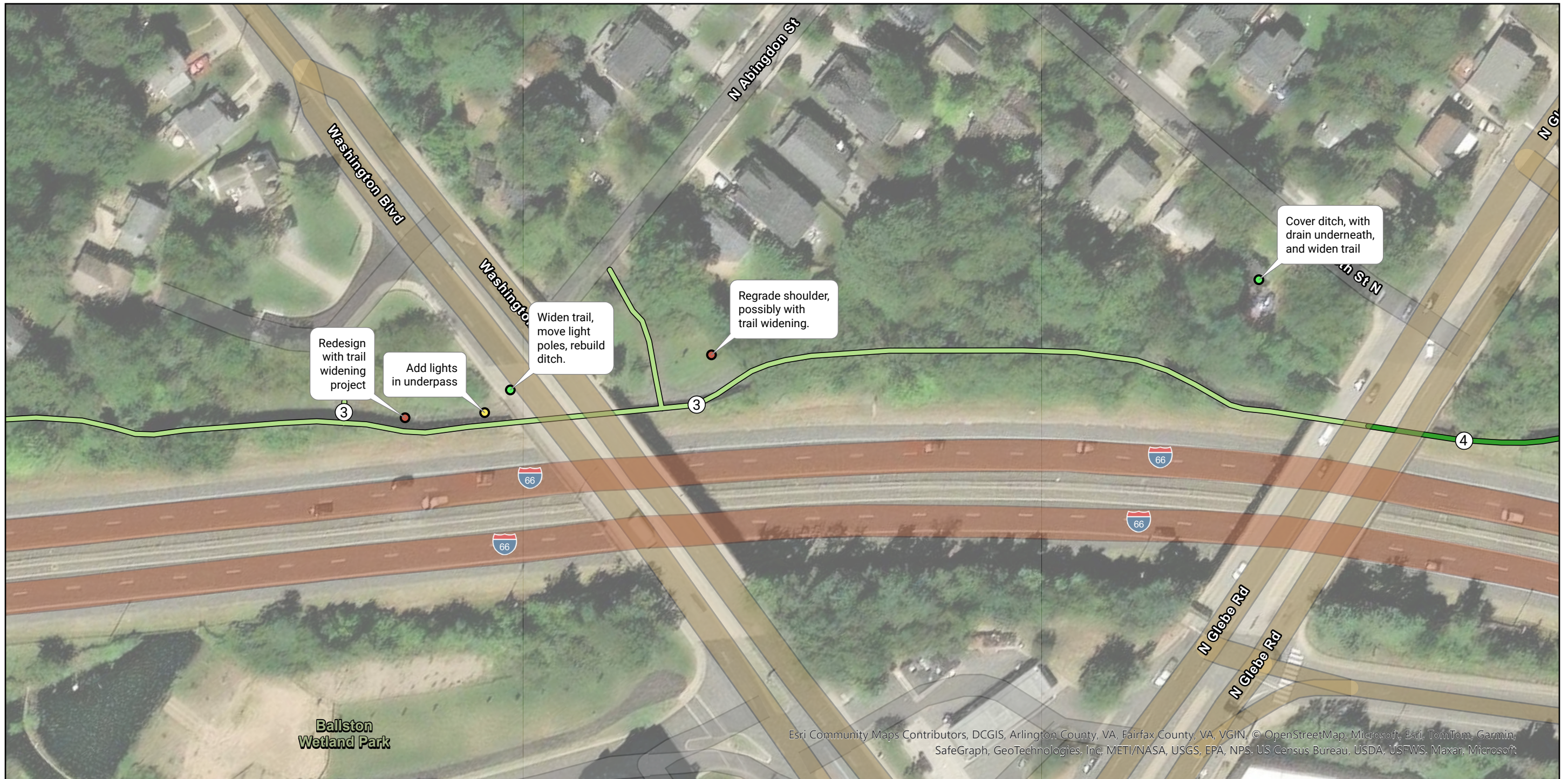


**OIPI GAP-TA Custis Trail**  
 Long-Term Recommendation Map Series  
 Page 7 of 24



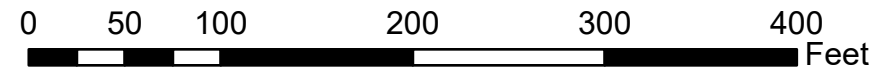
- Segment**  
 3 - Waycroft-Woodlawn
- Issue Type**  
 ● Trail Width (1)





Esri Community Maps Contributors, DCGIS, Arlington County, VA, Fairfax County, VA, VGIN, © OpenStreetMap, Microsoft, Esri, TomTom, Garmin, SafeGraph, GeoTechnologies, Inc, METI/NASA, USGS, EPA, NPS, US Census Bureau, USDA, USFWS, Maxar, Microsoft

**OIPI GAP-TA Custis Trail**  
 Long-Term Recommendation Map Series  
 Page 8 of 24

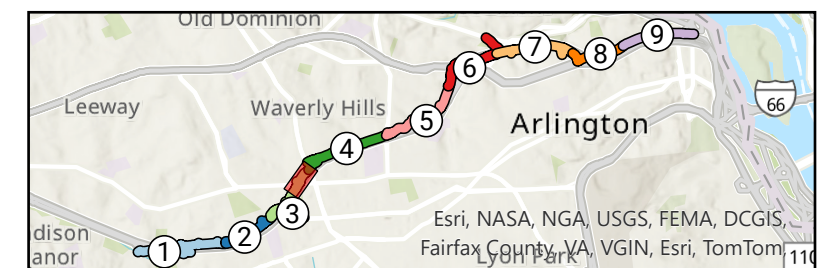


**Segment**

- 3 - Waycroft-Woodlawn
- 4 - Waverly Hills

**Issue Type**

- Dropoff/Sewer Grates (2)
- Lighting (1)
- Trail Width (2)



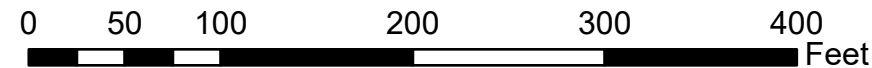
Esri, NASA, NGA, USGS, FEMA, DCGIS, Fairfax County, VA, VGIN, Esri, TomTom





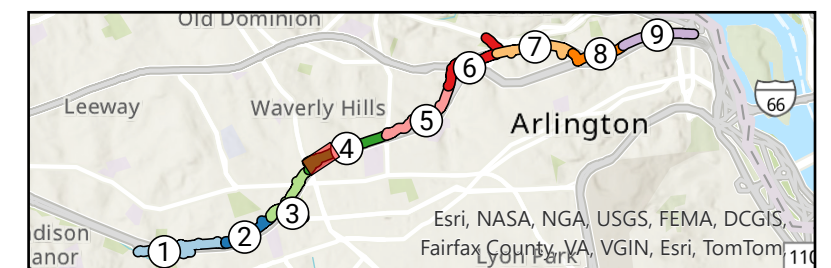
Esri Community Maps Contributors, DCGIS, Arlington County, VA, Fairfax County, VA, VGIN, © OpenStreetMap, Microsoft, Esri, TomTom, Garmin, SafeGraph, GeoTechnologies, Inc. METI/NASA, USGS, EPA, NPS, US Census Bureau, USDA, USFWS, Maxar, Microsoft

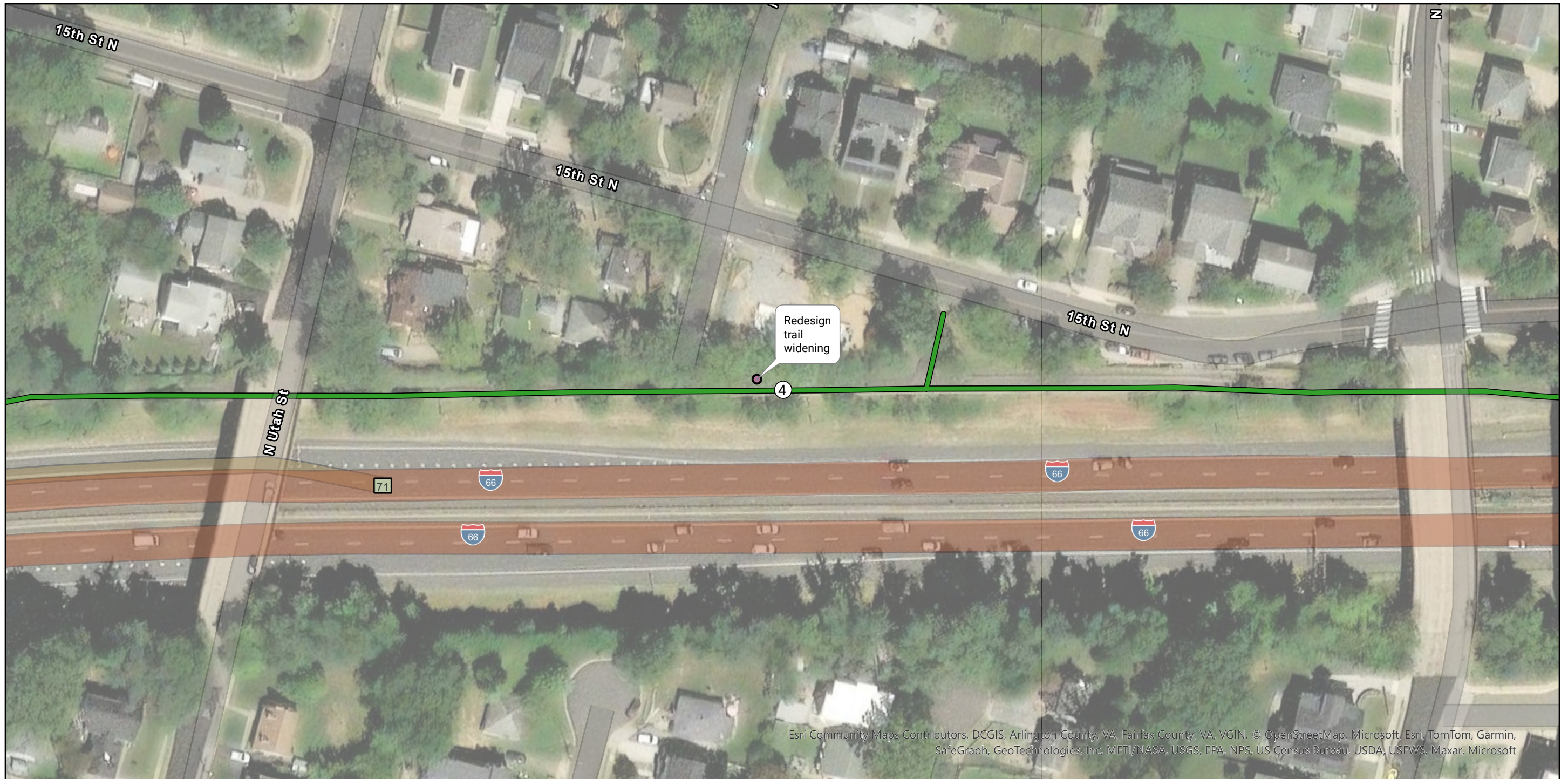
**OIPI GAP-TA Custis Trail**  
 Long-Term Recommendation Map Series  
 Page 9 of 24



- Segment**
- 3 - Waycroft-Woodlawn
  - 4 - Waverly Hills

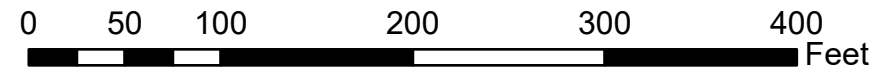
- Issue Type**
- Fixed Object (1)



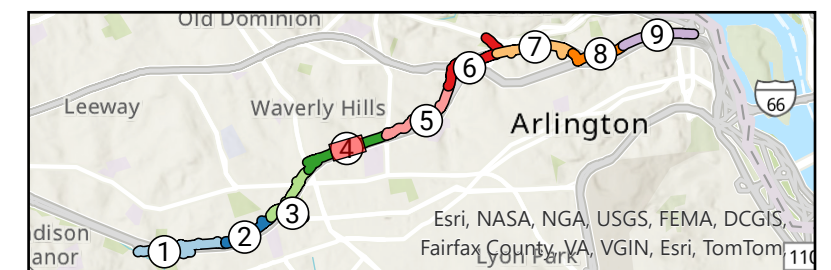


Esri Community Maps Contributors, DCGIS, Arlington County, VA, Fairfax County, VA, VGIN, © OpenStreetMap, Microsoft, Esri, TomTom, Garmin, SafeGraph, GeoTechnologies, Inc. METI/NASA, USGS, EPA, NPS, US Census Bureau, USDA, USFWS, Maxar, Microsoft

**OIPI GAP-TA Custis Trail**  
 Long-Term Recommendation Map Series  
 Page 10 of 24



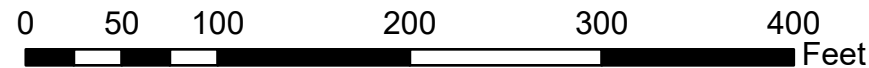
- Segment**  
 — 4 - Waverly Hills
- Issue Type**  
 ● Pavement Condition (1)





Esri Community Maps Contributors, DCGIS, Arlington County, VA, Fairfax County, VA, VGIN, © OpenStreetMap, Microsoft, Esri, TomTom, Garmin, SafeGraph, GeoTechnologies, Inc, METI/NASA, USGS, EPA, NPS, US Census Bureau, USDA, USFWS, Maxar, Microsoft

**OIPI GAP-TA Custis Trail**  
 Long-Term Recommendation Map Series  
 Page 11 of 24

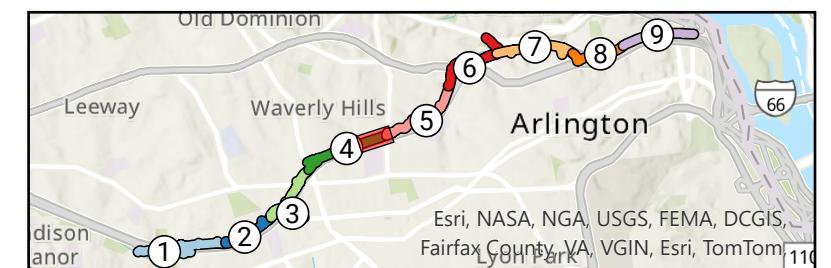


**Segment**

- 4 - Waverly Hills
- 5 - Cherry Valley Park

**Issue Type**

- Lighting (1)
- Steep Slope (1)
- Trail Width (1)



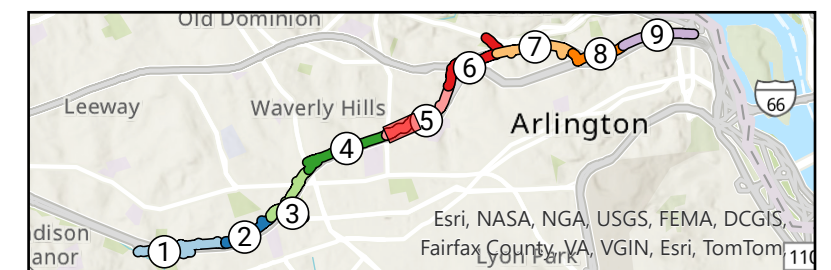


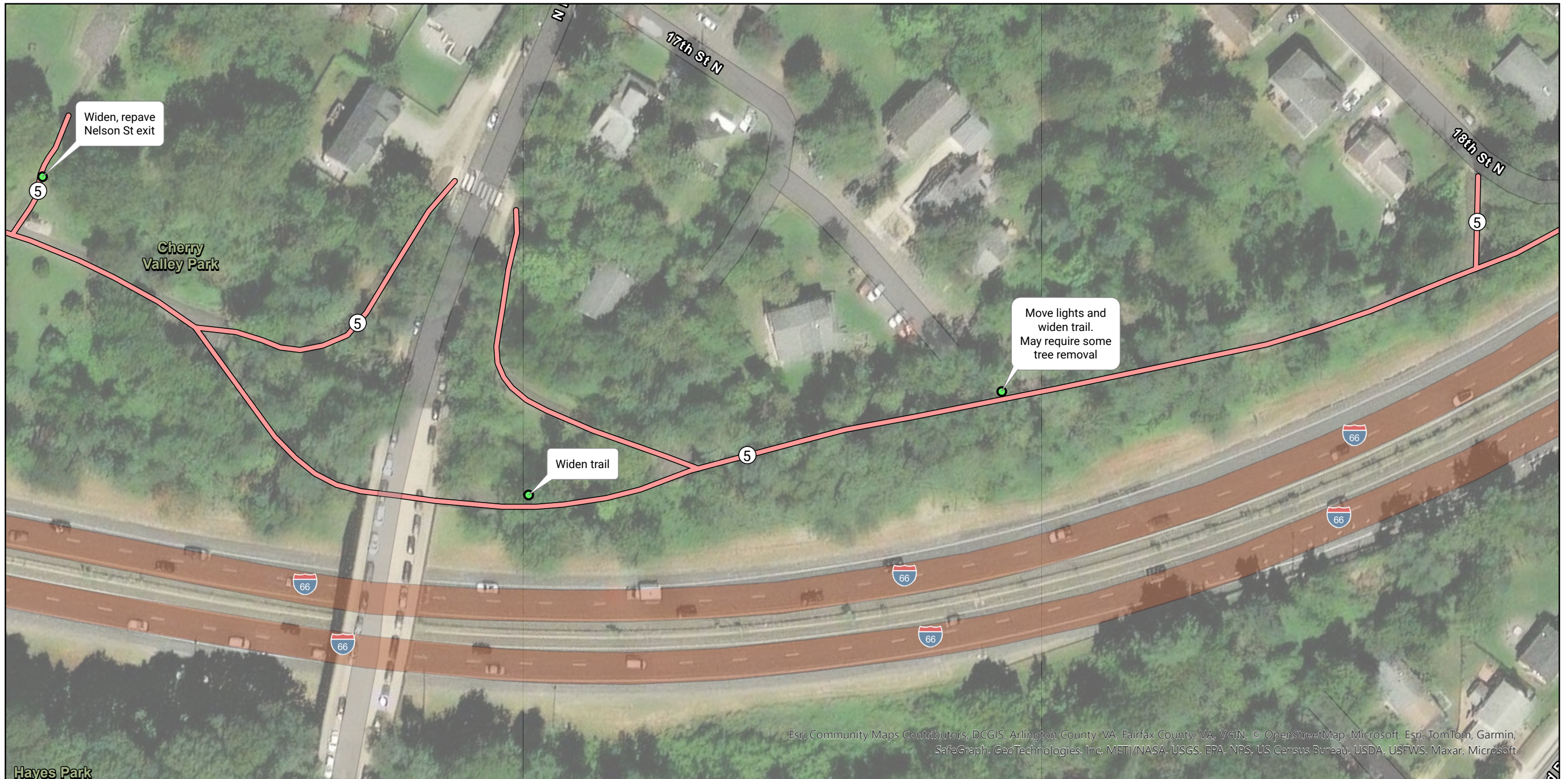
Esri Community Maps Contributors, DCGIS, Arlington County, VA, Fairfax County, VA, VGIN, © OpenStreetMap, Microsoft, Esri, TomTom, Garmin, SafeGraph, GeoTechnologies, Inc. METI/NASA, USGS, EPA, NPS, US Census Bureau, USDA, USFWS, Maxar, Microsoft

**OIPI GAP-TA Custis Trail**  
 Long-Term Recommendation Map Series  
 Page 12 of 24



- Segment**  
 — 5 - Cherry Valley Park
- Issue Type**
- Lighting (1)
  - Trail Width (2)



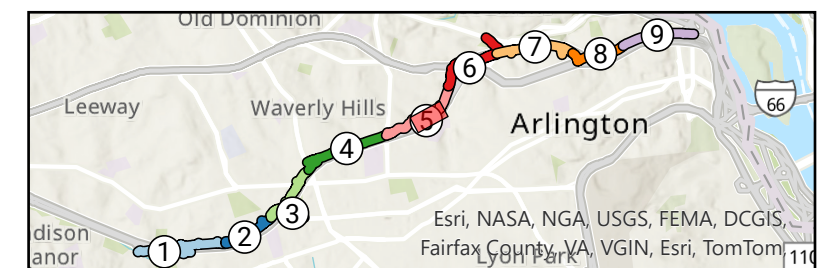
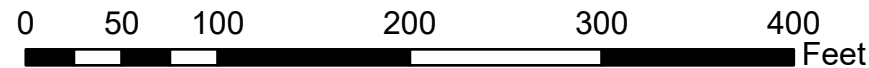


Esri Community Maps Contributors, DCGIS, Arlington County, VA, Fairfax County, VA, VGIN, © OpenStreetMap, Microsoft, Esri, TomTom, Garmin, SafeGraph, GeoTechnologies, Inc. METI/NASA, USGS, EPA, NPS, US Census Bureau, USDA, USFWS, Maxar, Microsoft

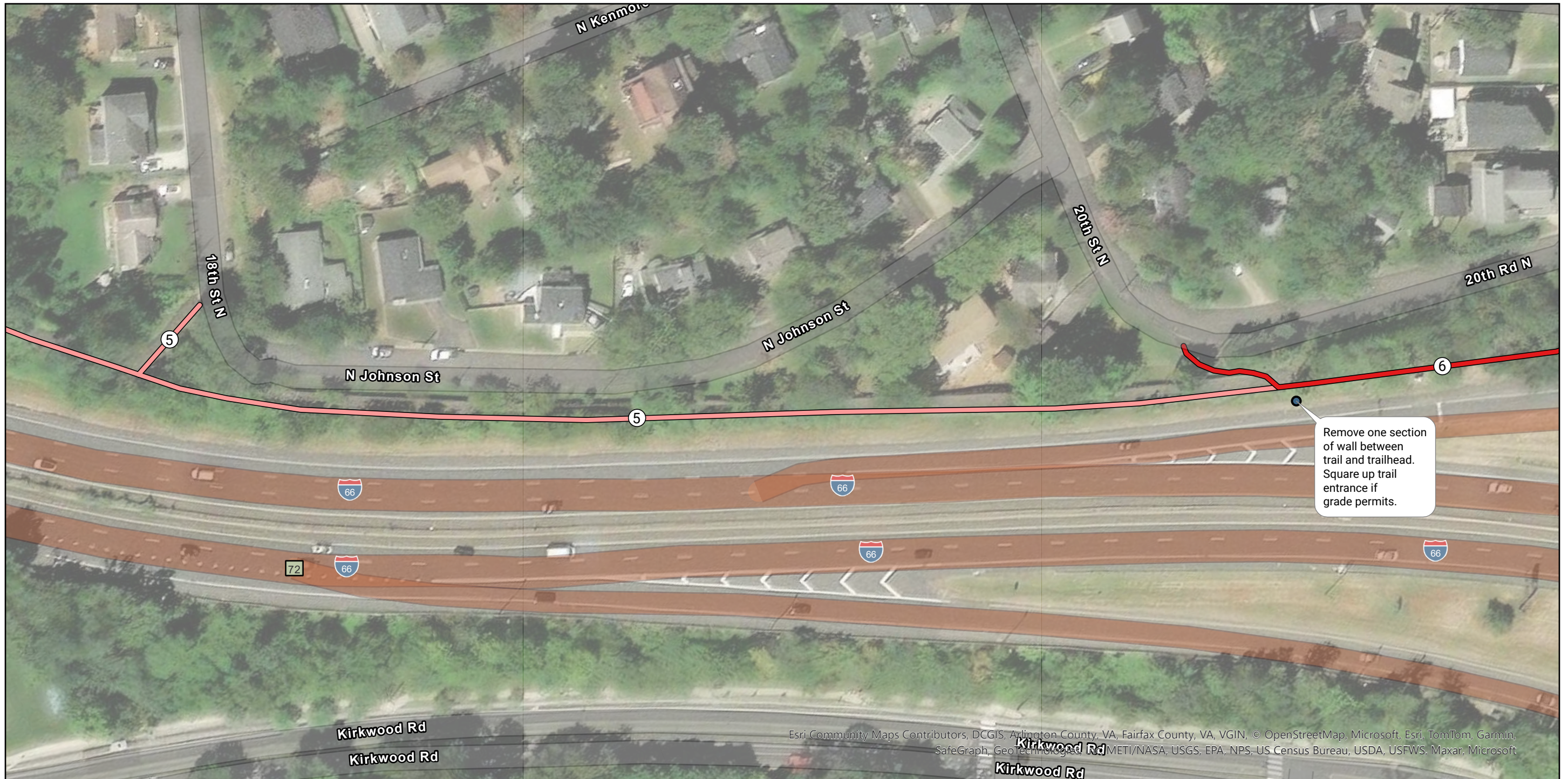
**OIPI GAP-TA Custis Trail**  
 Long-Term Recommendation Map Series  
 Page 13 of 24



- Segment**  
 — 5 - Cherry Valley Park
- Issue Type**  
 ● Trail Width (3)

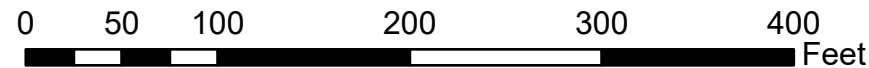


Esri, NASA, NGA, USGS, FEMA, DCGIS, Fairfax County, VA, VGIN, Esri, TomTom

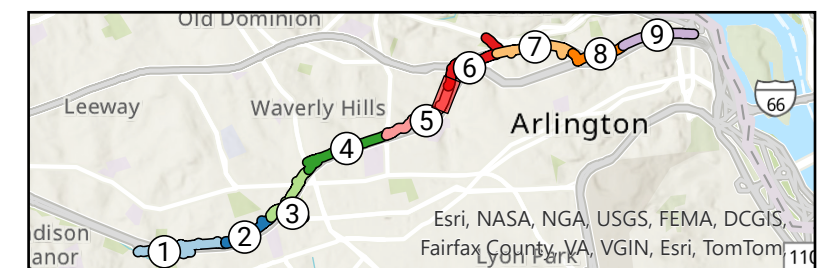


Esri Community Maps Contributors, DCGIS, Arlington County, VA, Fairfax County, VA, VGIN, © OpenStreetMap, Microsoft, Esri, TomTom, Garmin, SafeGraph, GeoTechnologies, Rd METI/NASA, USGS, EPA, NPS, US Census Bureau, USDA, USFWS, Maxar, Microsoft

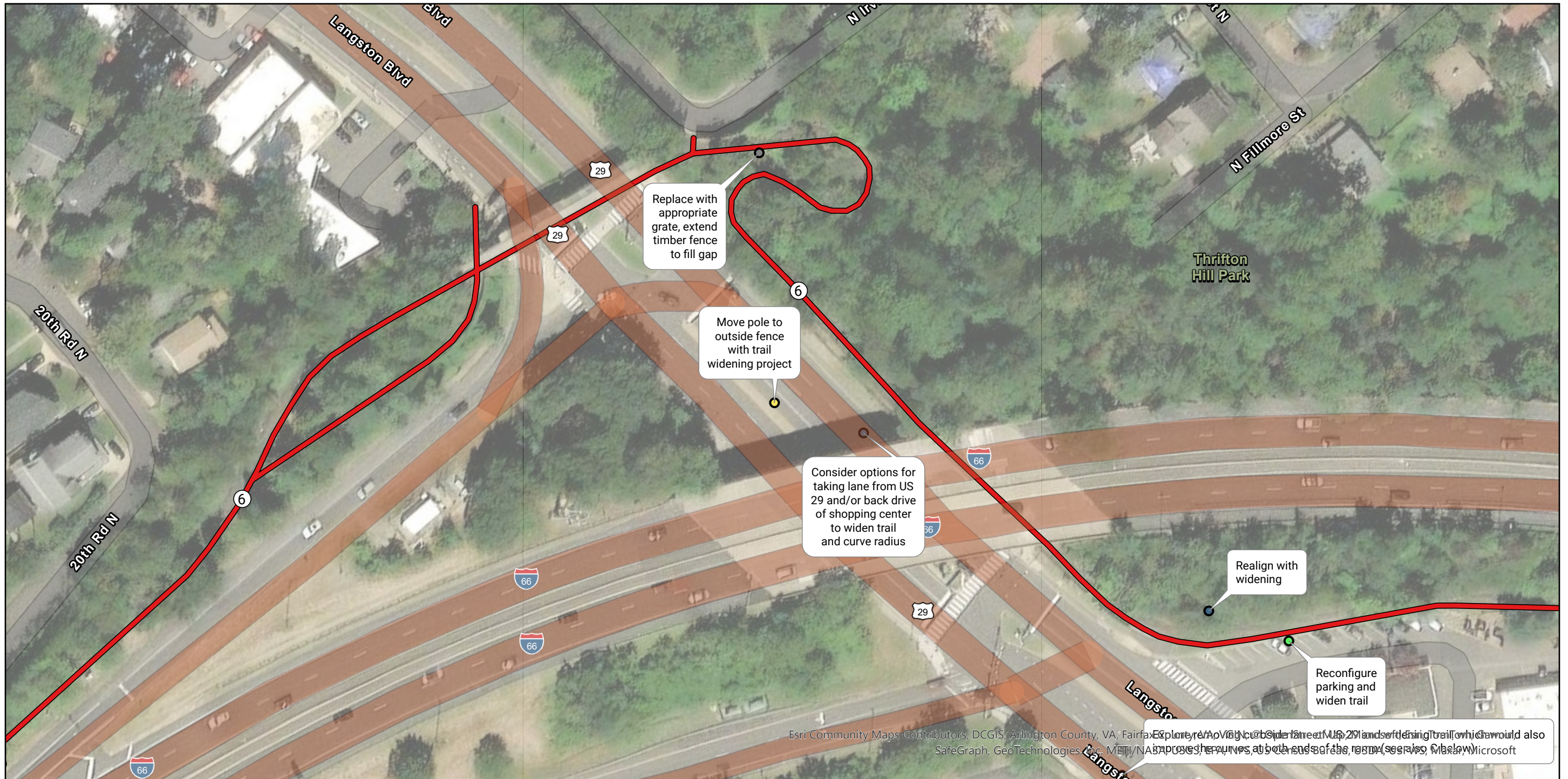
**OIPI GAP-TA Custis Trail**  
 Long-Term Recommendation Map Series  
 Page 14 of 24



- Segment**
- 5 - Cherry Valley Park
  - 6 - Thrifton Hill Park
- Issue Type**
- Visibility/Blind Spots (1)



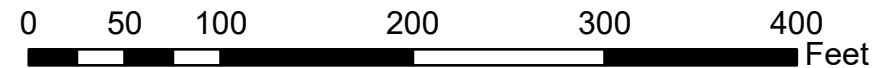
Remove one section of wall between trail and trailhead. Square up trail entrance if grade permits.



# OIPI GAP-TA Custis Trail

## Long-Term Recommendation Map Series

Page 15 of 24



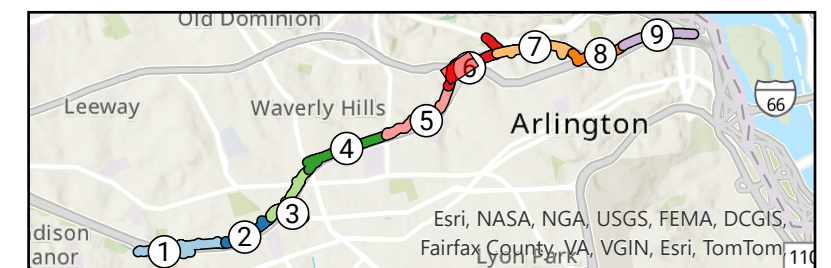
### Segment

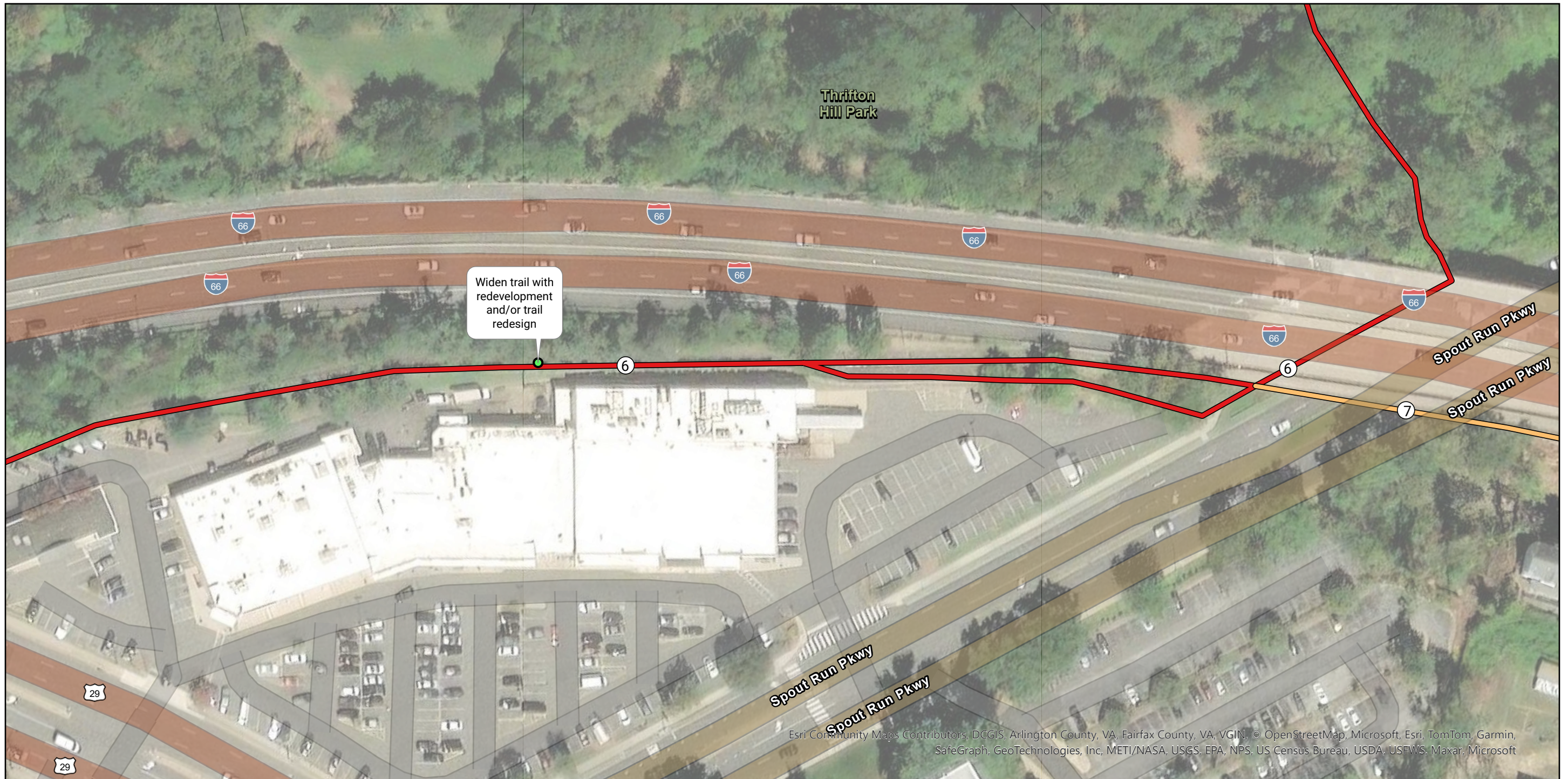
6 - Thrifton Hill Park

### Issue Type

● Lighting (1)

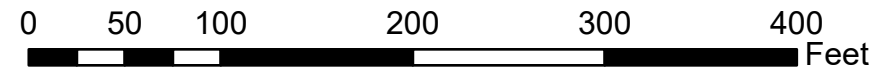
- Trail Width (2)
- Visibility/Blind Spots (3)
- Other (1)



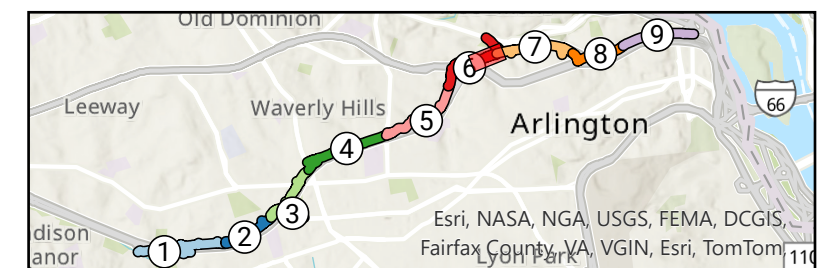


Esri Community Maps Contributors: DCGIS, Arlington County, VA, Fairfax County, VA, VGIN, © OpenStreetMap, Microsoft, Esri, TomTom, Garmin, SafeGraph, GeoTechnologies, Inc, METI/NASA, USGS, EPA, NPS, US Census Bureau, USDA, USEFWS, Maxar, Microsoft

**OIPI GAP-TA Custis Trail**  
 Long-Term Recommendation Map Series  
 Page 16 of 24



- Segment**
- 6 - Thrifton Hill Park
  - 7 - Spout Run
- Issue Type**
- Trail Width (1)



Esri, NASA, NGA, USGS, FEMA, DCGIS, Fairfax County, VA, VGIN, Esri, TomTom



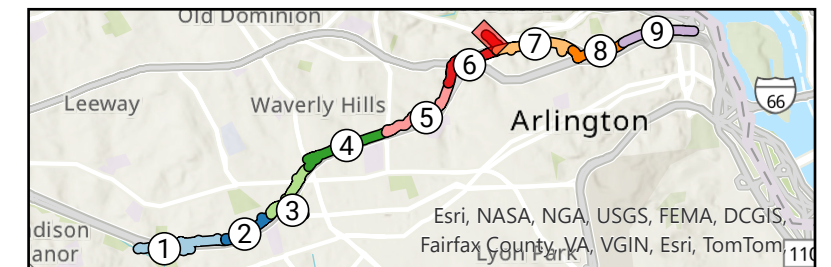
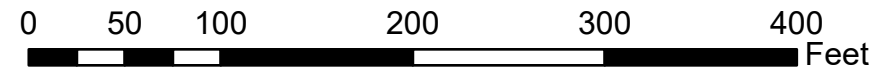


Esri Community Maps Contributors, DCGIS, Arlington County, VA, Fairfax County, VA, VGIN, © OpenStreetMap, Microsoft, Esri, TomTom, Garmin, SafeGraph, GeoTechnologies, Inc. METI/NASA, USGS, EPA, NPS, US Census Bureau, USDA, USFWS, Maxar, Microsoft

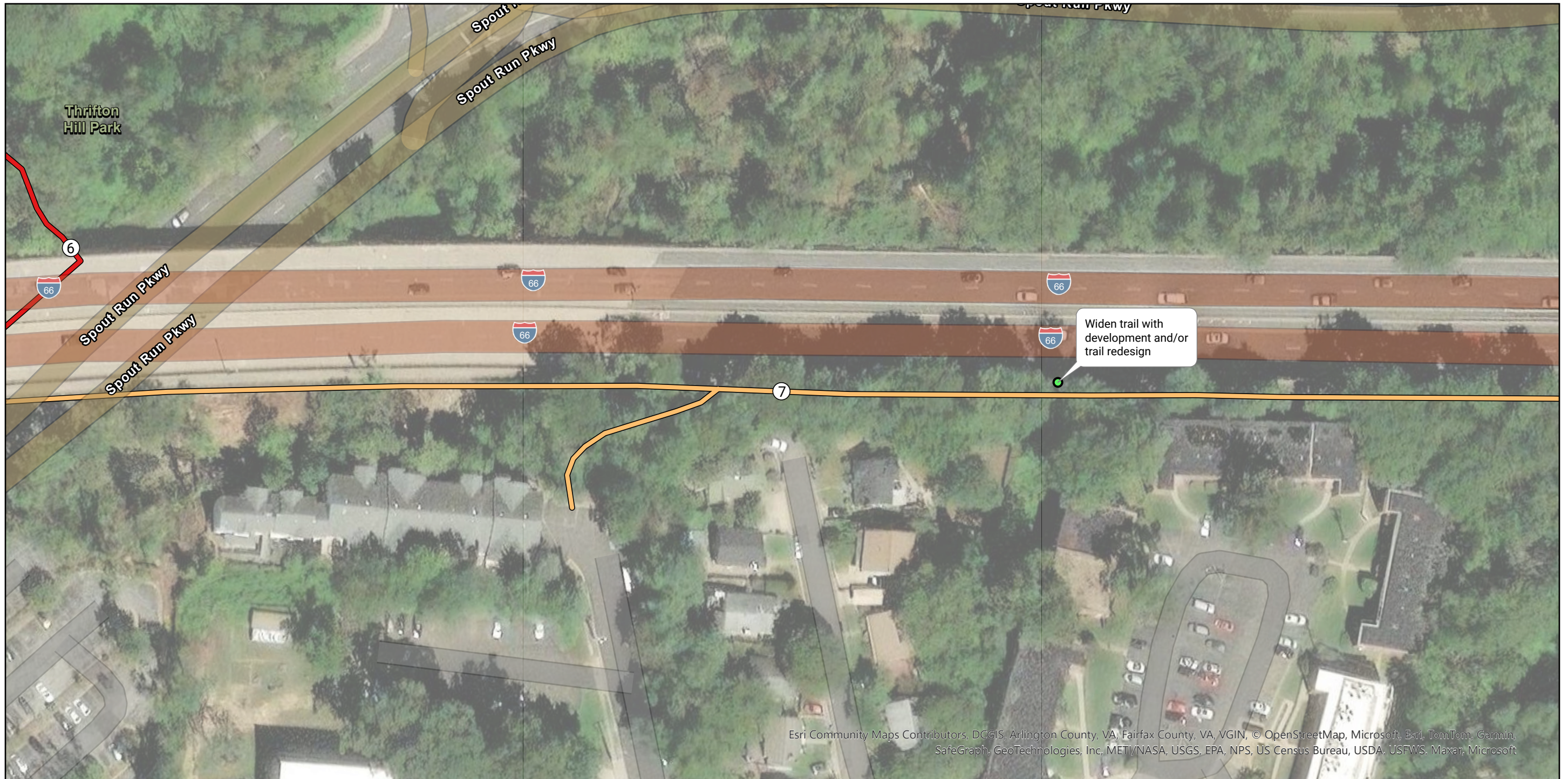
**OIPI GAP-TA Custis Trail**  
 Long-Term Recommendation Map Series  
 Page 17 of 24



- Segment**
- 6 - Thrifton Hill Park
  - 7 - Spout Run



Esri, NASA, NGA, USGS, FEMA, DCGIS, Fairfax County, VA, VGIN, Esri, TomTom

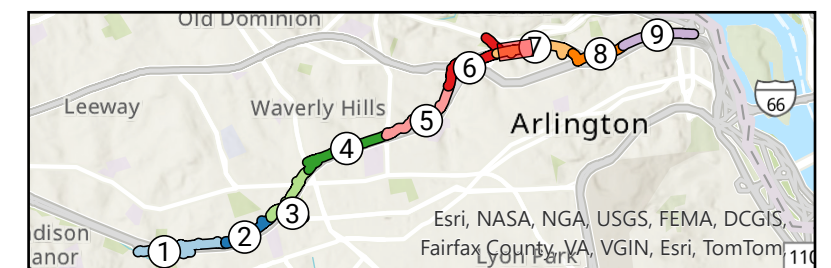


Esri Community Maps Contributors, DCGIS, Arlington County, VA, Fairfax County, VA, VGIN, © OpenStreetMap, Microsoft, Esri, TomTom, Garmin, SafeGraph, GeoTechnologies, Inc., METI/NASA, USGS, EPA, NPS, US Census Bureau, USDA, USFWS, Maxar, Microsoft

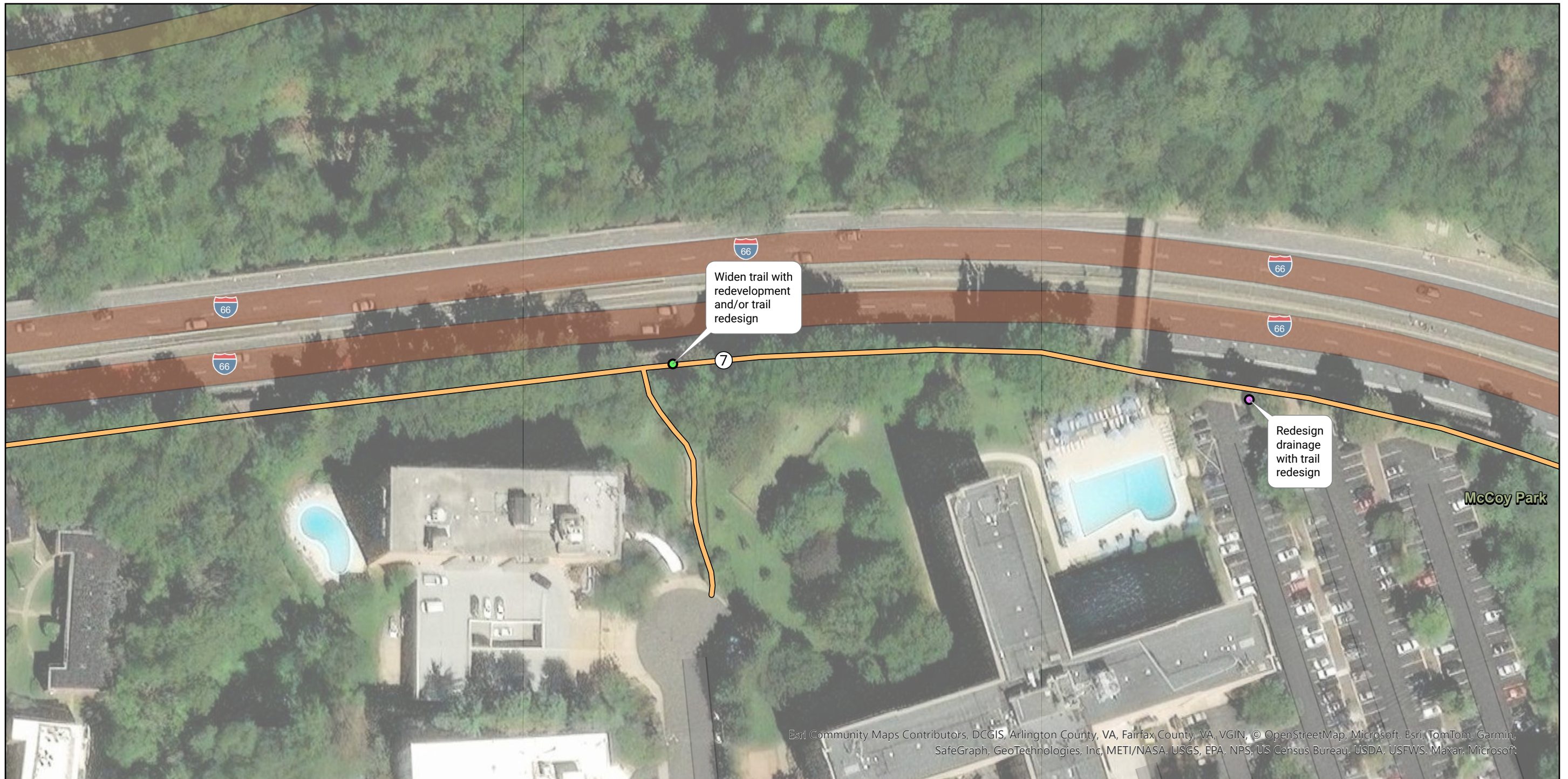
**OIPI GAP-TA Custis Trail**  
 Long-Term Recommendation Map Series  
 Page 18 of 24



- Segment**
- 6 - Thrifton Hill Park
  - 7 - Spout Run
- Issue Type**
- Trail Width (1)



Esri, NASA, NGA, USGS, FEMA, DCGIS, Fairfax County, VA, VGIN, Esri, TomTom



Esri, Community Maps Contributors, DCGIS, Arlington County, VA, Fairfax County, VA, VGIN, © OpenStreetMap, Microsoft, Esri, TomTom, Garmin, SafeGraph, GeoTechnologies, Inc, METI/NASA, USGS, EPA, NPS, US Census Bureau, USDA, USFWS, Maxar, Microsoft

**OIPI GAP-TA Custis Trail**  
 Long-Term Recommendation Map Series  
 Page 19 of 24



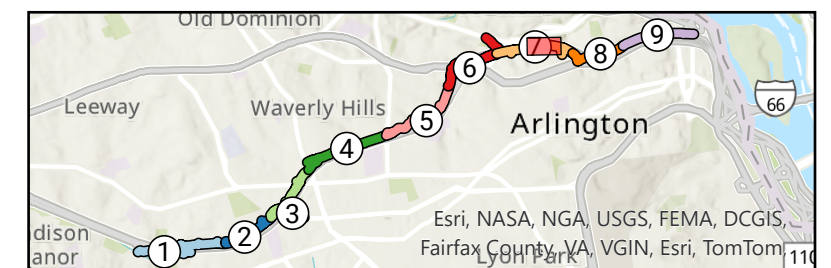
0 50 100 200 300 400 Feet

**Segment**

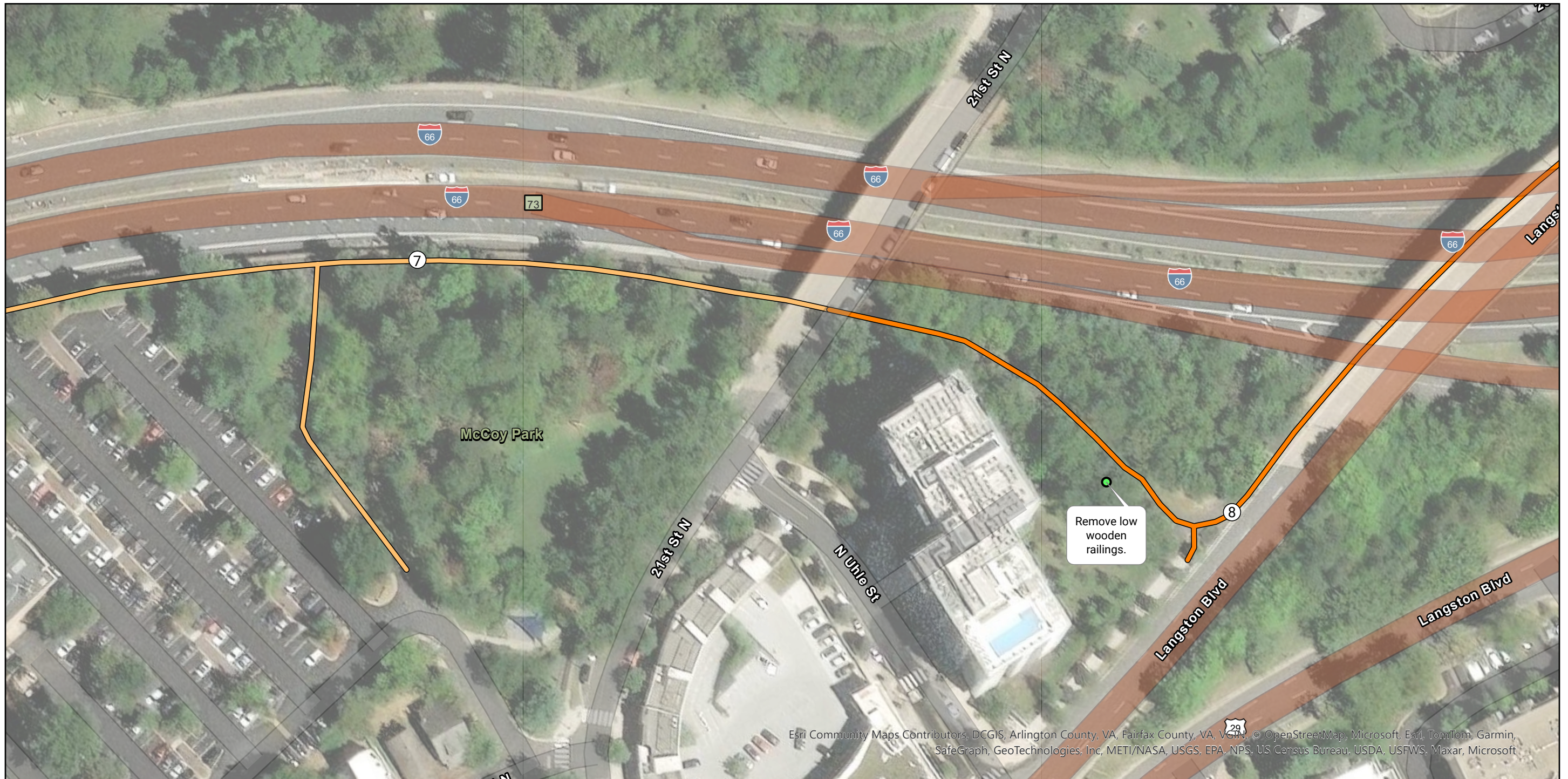
— 7 - Spout Run

**Issue Type**

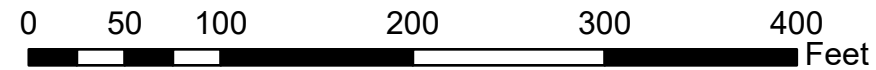
- Drainage/Ponding (1)
- Trail Width (1)



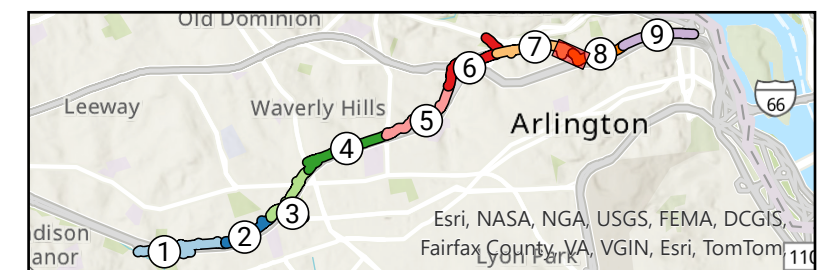
Esri, NASA, NGA, USGS, FEMA, DCGIS, Fairfax County, VA, VGIN, Esri, TomTom

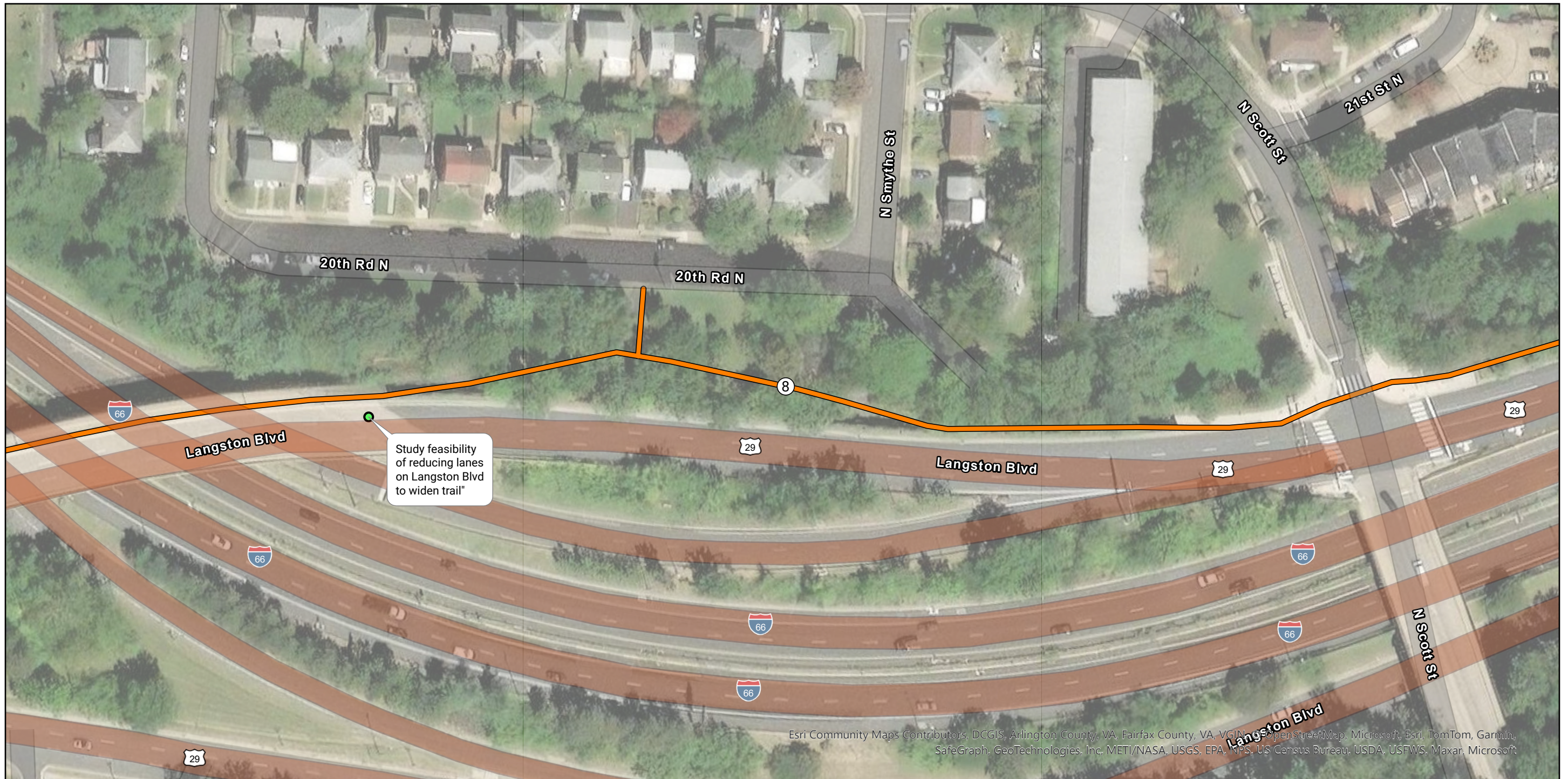


**OIPI GAP-TA Custis Trail**  
 Long-Term Recommendation Map Series  
 Page 20 of 24



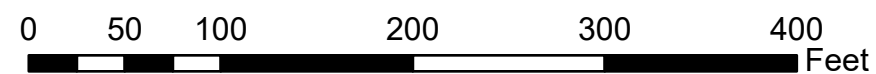
- Segment**
- 7 - Spout Run
  - 8 - North Highlands
- Issue Type**
- Trail Width (1)



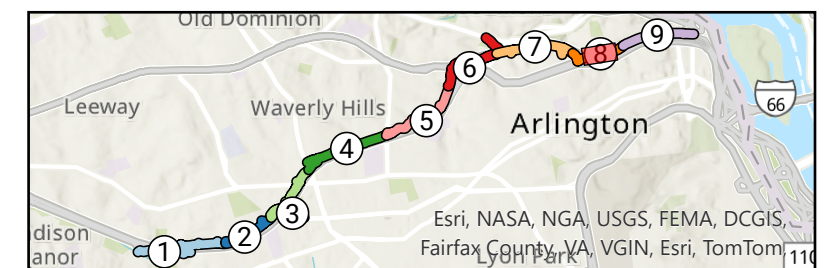


Esri Community Maps Contributors, DCGIS, Arlington County, VA, Fairfax County, VA, VGIN, OpenStreetMap, Microsoft, Esri, TomTom, Garmin, SafeGraph, GeoTechnologies, Inc. METI/NASA, USGS, EPA, NPS, US Census Bureau, USDA, USFWS, Maxar, Microsoft

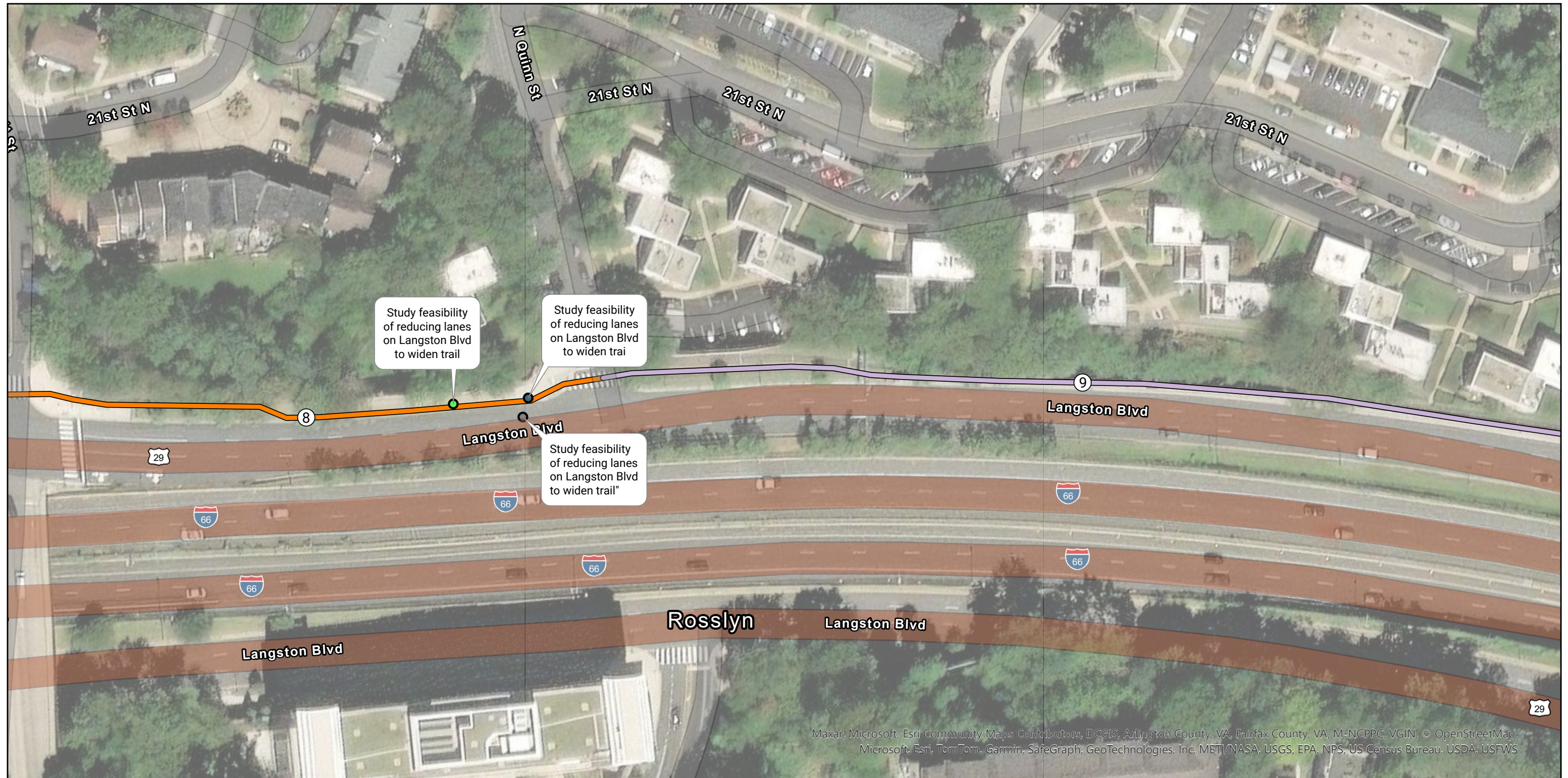
**OIPI GAP-TA Custis Trail**  
 Long-Term Recommendation Map Series  
 Page 21 of 24



- Segment**  
 — 8 - North Highlands
- Issue Type**  
 ● Trail Width (1)

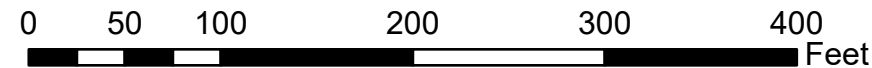


Esri, NASA, NGA, USGS, FEMA, DCGIS, Fairfax County, VA, VGIN, Esri, TomTom



Maxar, Microsoft, Esri, Community Maps Contributors, DCGIS, Arlington County, VA, Fairfax County, VA, M-NCPPC, VGIN, © OpenStreetMap, Microsoft, Esri, TomTom, Garmin, SafeGraph, GeoTechnologies, Inc, METI/NASA, USGS, EPA, NPS, US Census Bureau, USDA, USFWS

**OIPI GAP-TA Custis Trail**  
 Long-Term Recommendation Map Series  
 Page 22 of 24

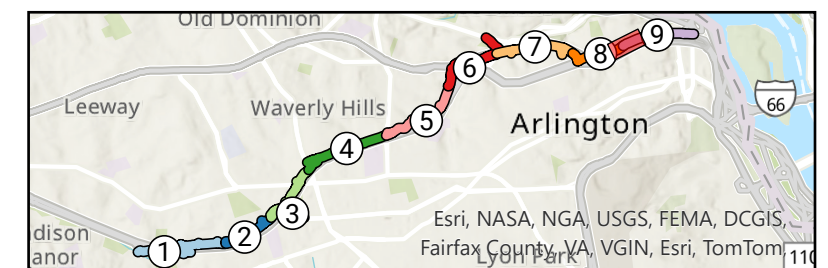


**Segment**

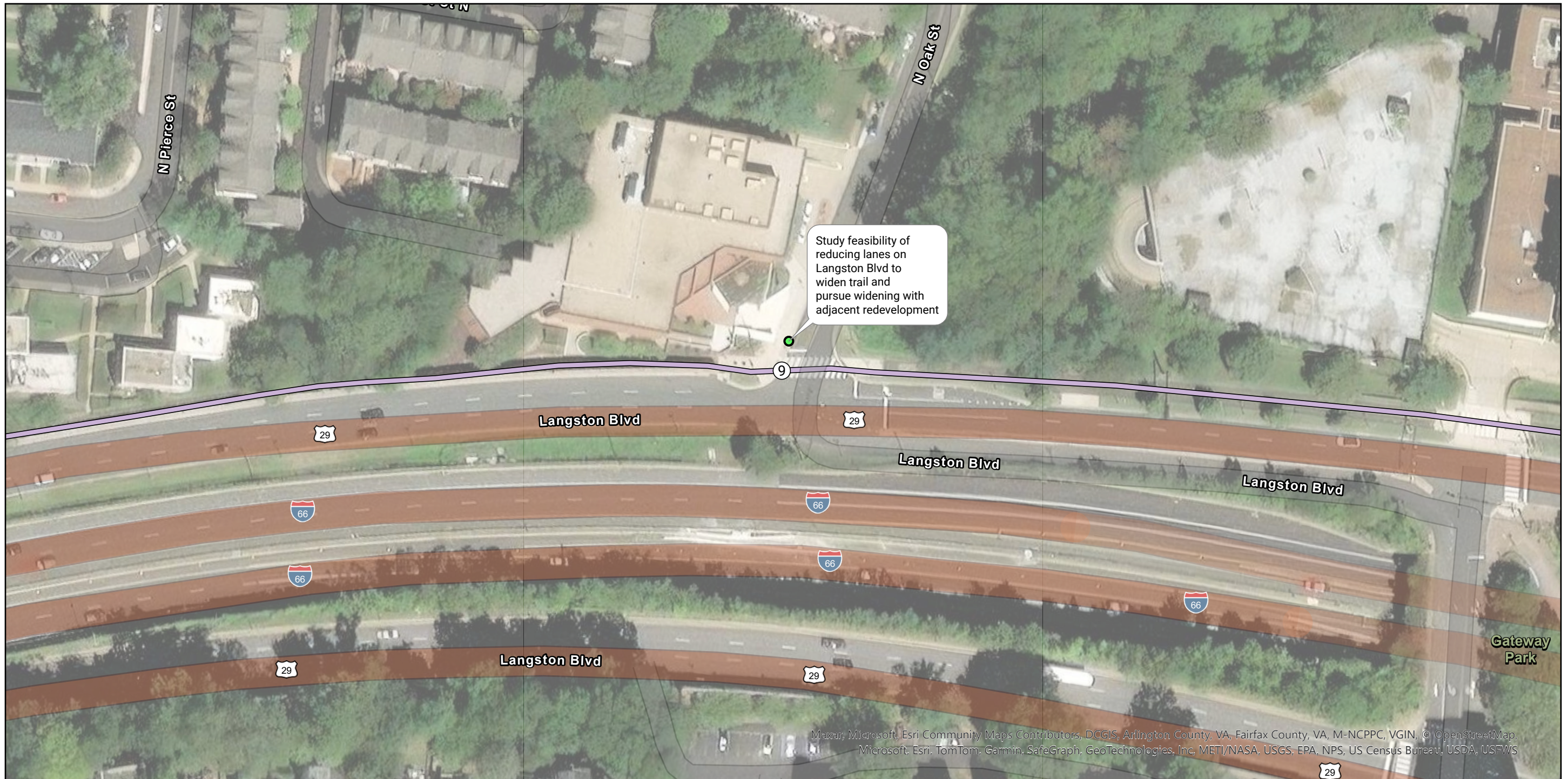
- 8 - North Highlands
- 9 - Rosslyn

**Issue Type**

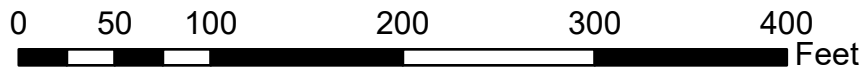
- Trail Width (1)
- Visibility/Blind Spots (1)
- Other (1)



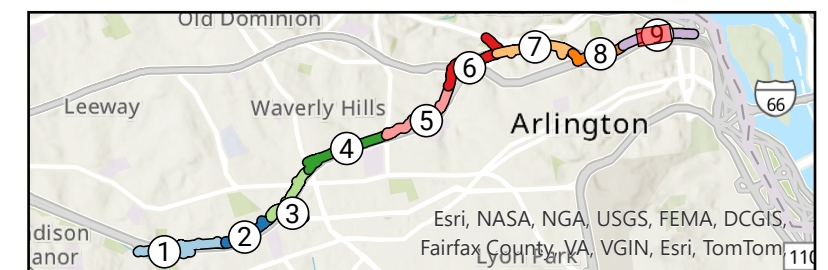
Esri, NASA, NGA, USGS, FEMA, DCGIS, Fairfax County, VA, VGIN, Esri, TomTom



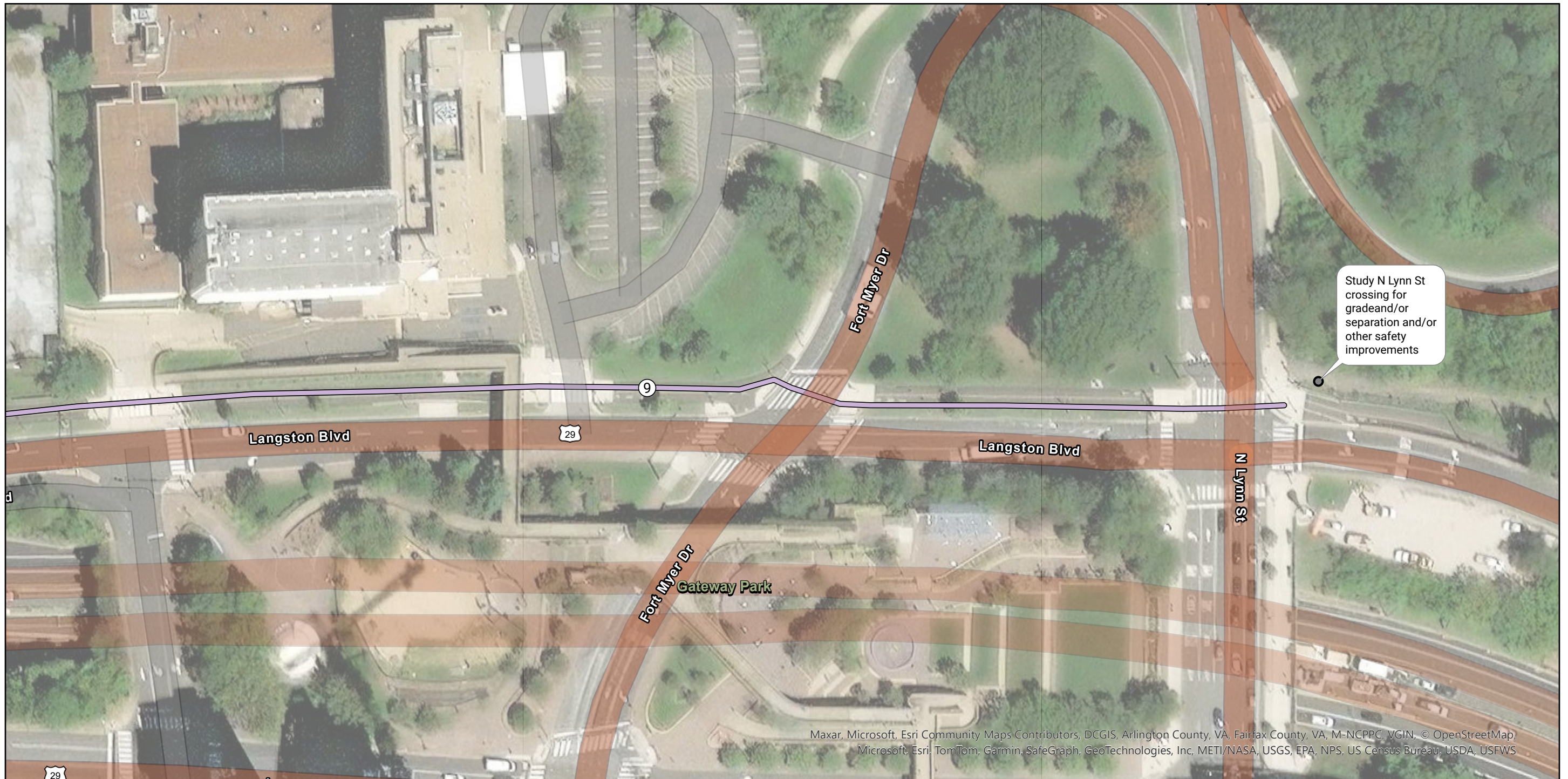
OIPI GAP-TA Custis Trail  
 Long-Term Recommendation Map Series  
 Page 23 of 24



- Segment
- 9 - Rosslyn
- Issue Type
- Trail Width (1)



Maxar, Microsoft, Esri Community Maps Contributors, DCGIS, Arlington County, VA, Fairfax County, VA, M-NCPPC, VGIN, © OpenStreetMap, Microsoft, Esri, TomTom, Garmin, SafeGraph, GeoTechnologies, Inc, METI/NASA, USGS, EPA, NPS, US Census Bureau, USDA, USFWS



**OIPI GAP-TA Custis Trail**  
 Long-Term Recommendation Map Series  
 Page 24 of 24



**Segment**

- 9 - Rosslyn
- Other (1)

