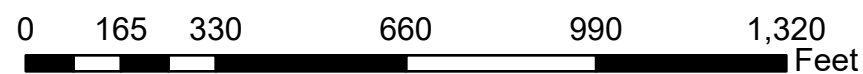


Maxar, Microsoft, WSS, OSEM, Esri Community Maps Contributors, Arlington County, VA, Fairfax County, VA, © OpenStreetMap, Microsoft, Esri, TomTom, Garmin, SafeGraph, GeoTechnologies, Inc. METI/NASA, USGS, EPA, NPS, US Census Bureau, USDA, USFWS

# OIPI GAP-TA Custis Trail

Stormwater Map Series  
Page 1 of 9



## Custis Trail Segments

- 1 - Bon Air Park
- 2 - Bluemont

## Flood Hazard Zones

- 1% Annual Chance Flood Hazard
- Regulatory Floodway
- 0.2% Annual Chance Flood Hazard

## Resource Protection Areas

- Resource Protection Areas

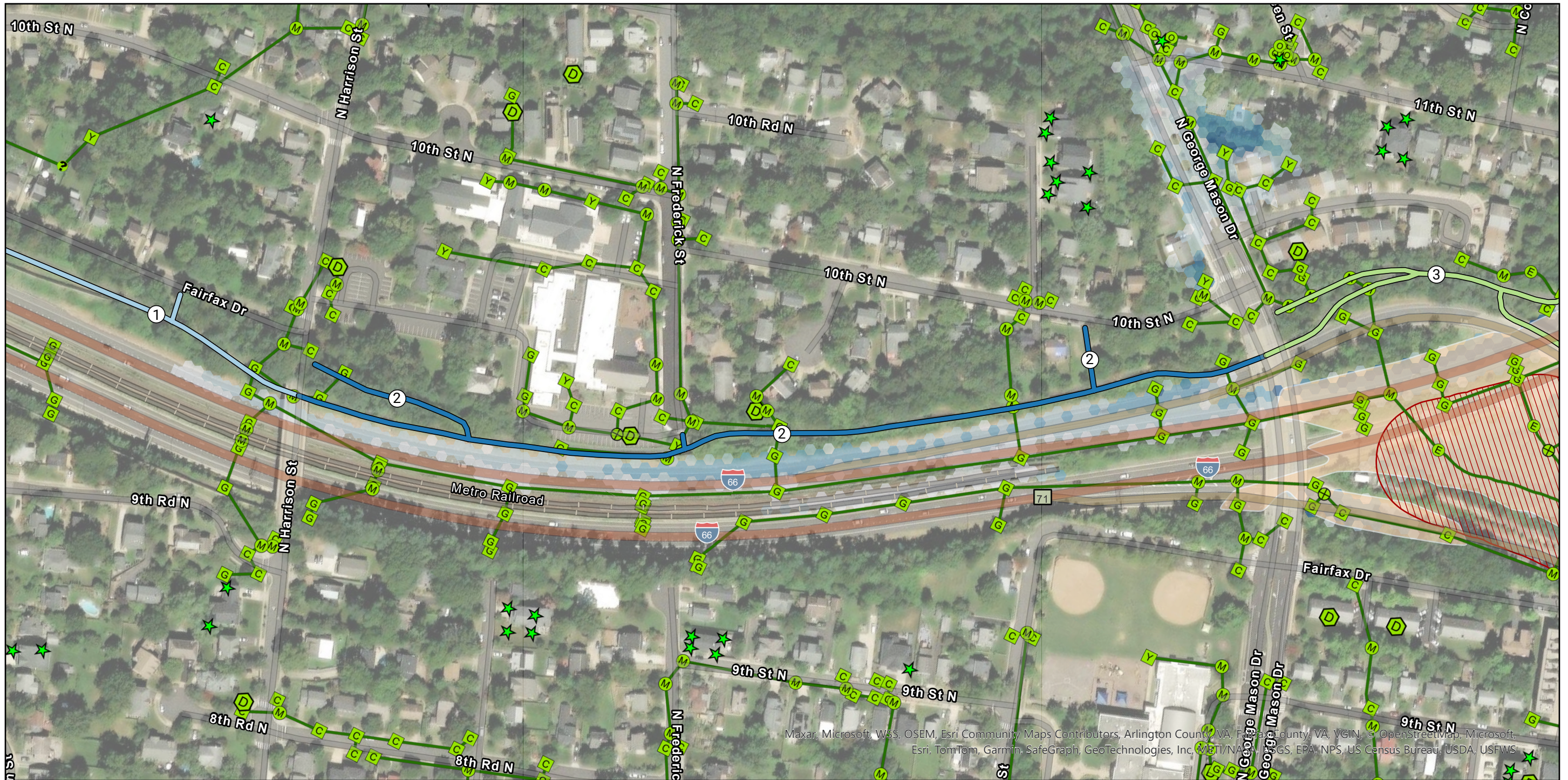
## RAMP 2040 100-Yr Flood

- <0.33 ft
- 0.33 - 1 ft
- 1 - 2 ft

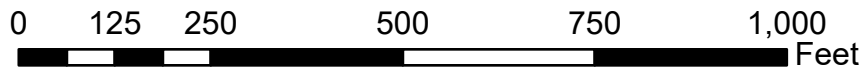
## Stormwater Junctions

- Catch Basin
- Detention Facility
- End Wall / End Section
- Grate Inlet
- Junction No Structure
- Manhole

- Other
- Yard Inlet
- Discharge Point
- Stormwater Management Facility
- Unknown
- Stormwater Mains



**OIPI GAP-TA Custis Trail**  
 Stormwater Map Series  
 Page 2 of 9



**Custis Trail Segments**

- 1 - Bon Air Park
- 2 - Bluemont
- 3 - Waycroft-Woodlawn

**Flood Hazard Zones**

- 0.2% Annual Chance Flood Hazard

**Resource Protection Areas**

- Resource Protection Areas

**RAMP 2040 100-Yr Flood**

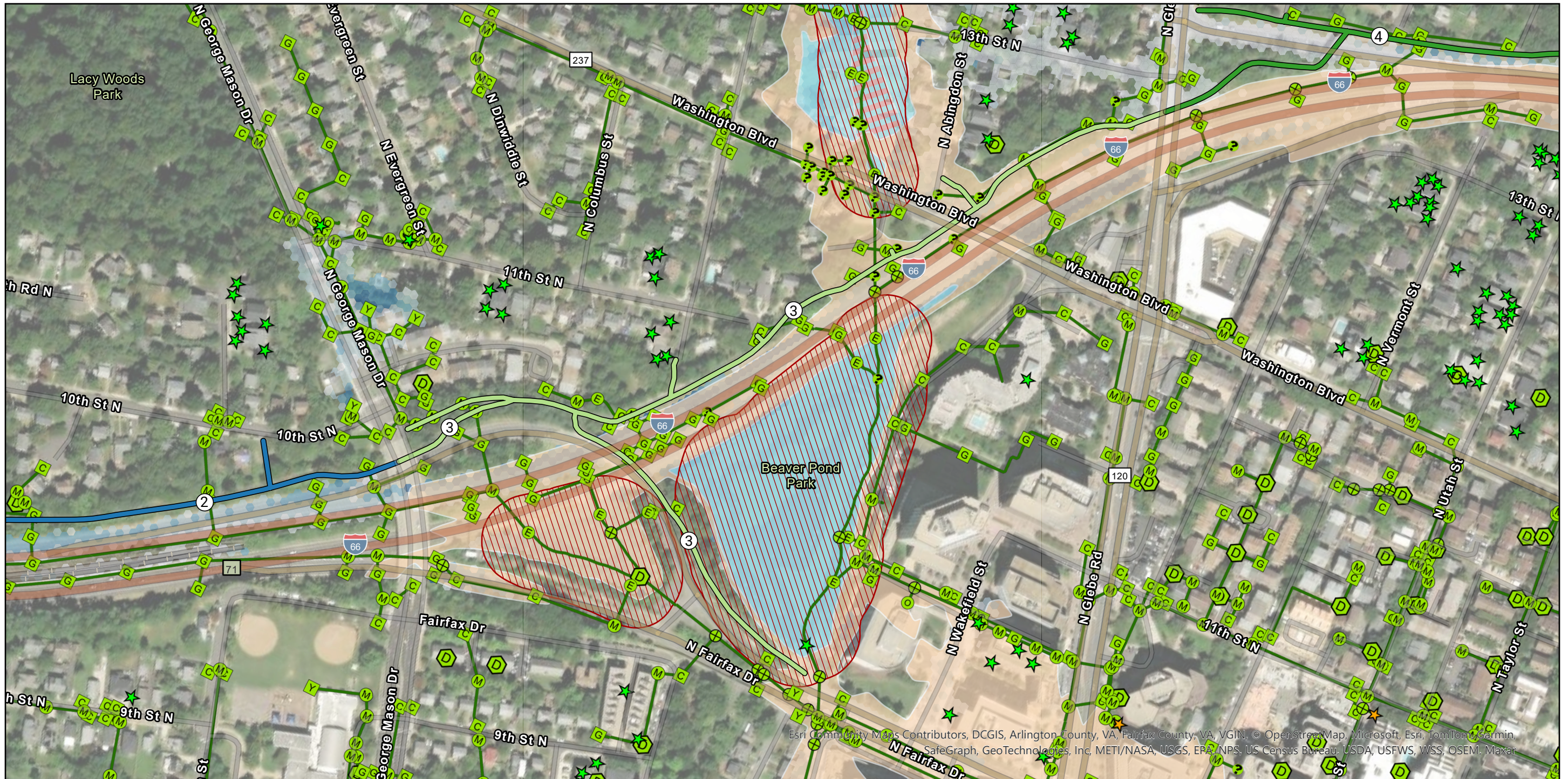
- <0.33 ft
- 0.33 - 1 ft
- 1 - 2 ft
- 2 - 3 ft
- 3+ ft

**Stormwater Junctions**

- Catch Basin
- Detention Facility
- End Wall / End Section
- Grate Inlet
- Junction No Structure
- Manhole
- Other

- Yard Inlet
- ★ Stormwater Management Facility
- Unknown
- Stormwater Mains

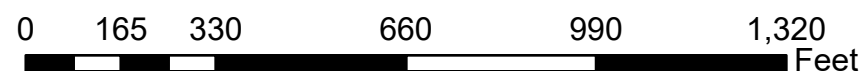
Maxar, Microsoft, WSS, OSEM, Esri Community Maps Contributors, Arlington County, VA, Fairfax County, VA, VGIN, © OpenStreetMap, Microsoft, Esri, TomTom, Garmin, SafeGraph, GeoTechnologies, Inc., MET/NA, USGS, EPA, NPS, US Census Bureau, USDA, USFWS



Esri Community Maps Contributors, DCGIS, Arlington County, VA, Fairfax County, VA, VGIN, © OpenStreetMap, Microsoft, Esri, TomTom, Garmin, SafeGraph, GeoTechnologies, Inc, METI/NASA, USGS, EPA/NPS, US Census Bureau, USDA, USFWS, WSS, OSEM, Maxar

# OIPI GAP-TA Custis Trail

Stormwater Map Series  
Page 3 of 9



## Custis Trail Segments

- 2 - Bluement
- 3 - Waycroft-Woodlawn
- 4 - Waverly Hills

## Flood Hazard Zones

- 1% Annual Chance Flood Hazard
- Regulatory Floodway
- 0.2% Annual Chance Flood Hazard

## Resource Protection Areas

- Resource Protection Areas

## RAMP 2040 100-Yr Flood

- <0.33 ft
- 0.33 - 1 ft
- 1 - 2 ft
- 2 - 3 ft
- 3+ ft

## Stormwater Junctions

- C Catch Basin
- D Detention Facility
- E End Wall / End Section
- G Grate Inlet
- + Junction No Structure
- M Manhole
- O Other

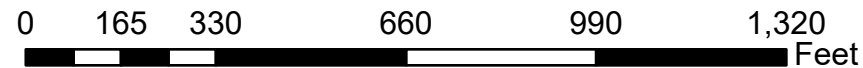
- Y Yard Inlet
- ★ Discharge Point
- ★ Stormwater Management Facility
- ? Unknown
- Stormwater Mains



Esri, Community Maps Contributors, DC GIS, Arlington High School, VA, Fairfax County, VA, VGIN, © OpenStreetMap, Microsoft, Esri, TomTom, Garmin, SafeGraph, GeoTechnologies, Inc, METI/NASA, USGS, EPA, NPS, US Census Bureau, USDA, USFWS, Maxar, Microsoft, WSS, OSEM

# OIPI GAP-TA Custis Trail

Stormwater Map Series  
Page 4 of 9



## Custis Trail Segments

- 3 - Waycroft-Woodlawn
- 4 - Waverly Hills
- 5 - Cherry Valley Park

## Flood Hazard Zones

- 0.2% Annual Chance Flood Hazard

## RAMP 2040 100-Yr Flood

- <0.33 ft
- 0.33 - 1 ft
- 1 - 2 ft
- 2 - 3 ft
- 3+ ft

## Stormwater Junctions

- C Catch Basin
- D Detention Facility
- E End Wall / End Section
- G Grate Inlet
- + Junction No Structure
- M Manhole

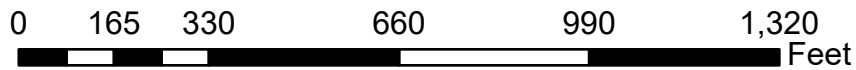
- O Other
- Y Yard Inlet
- ★ Discharge Point
- ★ Stormwater Management Facility
- ? Unknown
- Stormwater Mains



# OIPI GAP-TA Custis Trail

## Stormwater Map Series

Page 5 of 9



### Custis Trail Segments

- 4 - Waverly Hills
- 5 - Cherry Valley Park
- 6 - Thrifton Hill Park

### Flood Hazard Zones

- 1% Annual Chance Flood Hazard
- 0.2% Annual Chance Flood Hazard

### Resource Protection Areas

- Resource Protection Areas

### RAMP 2040 100-Yr Flood

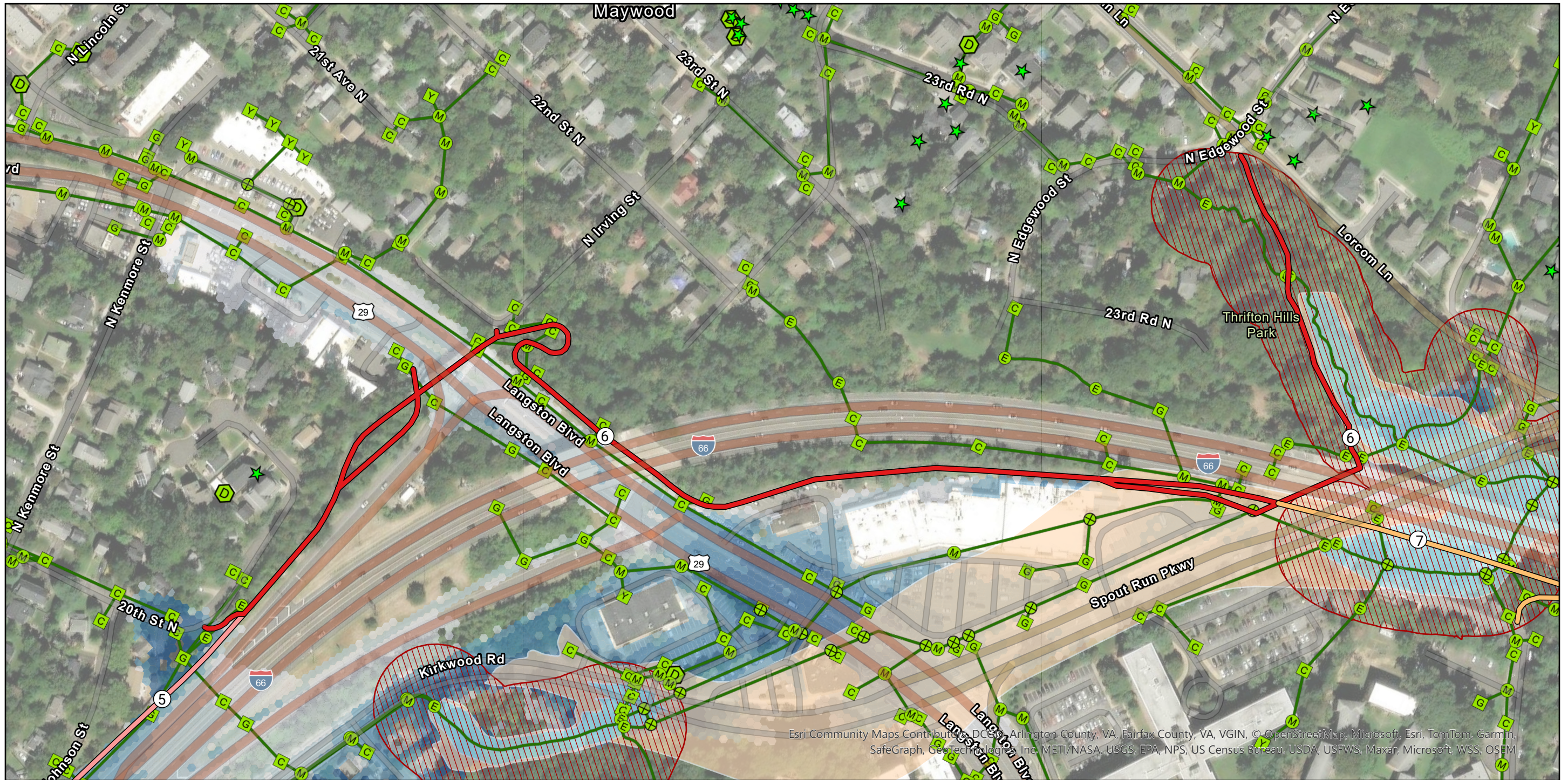
- <0.33 ft
- 0.33 - 1 ft
- 1 - 2 ft
- 2 - 3 ft
- 3+ ft

### Stormwater Junctions

- Catch Basin
- Detention Facility
- End Wall / End Section
- Grate Inlet
- Junction No Structure
- Manhole
- Other

- Yard Inlet
- ★ Discharge Point
- ★ Stormwater Management Facility
- Stormwater Mains

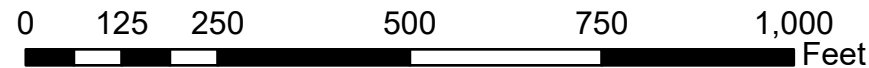
Esri Community Maps Contributors, DCGIS, Arlington County, VA, Fairfax County, VA, VGIN, © OpenStreetMap, Microsoft, Esri, TomTom, Garmin, SafeGraph, GeoTechnologies, Inc, METI/NASA, USGS, EPA, NPS, US Census Bureau, USDA, USFWS, Maxar, Microsoft, WSS, OSEM



Esri, Community Maps Contributor, DCIS, Arlington County, VA, Fairfax County, VA, VGIN, © OpenStreetMap, Microsoft, Esri, TomTom, Garmin, SafeGraph, GeoTechnologies, Inc, METI/NASA, USGS, EPA, NPS, US Census Bureau, USDA, USFWS, Maxar, Microsoft, WSS, OSEM

# OIPI GAP-TA Custis Trail

Stormwater Map Series  
Page 6 of 9



## Custis Trail Segments

- 5 - Cherry Valley Park
- 6 - Thrifton Hill Park
- 7 - Spout Run

## Flood Hazard Zones

- 1% Annual Chance Flood Hazard
- 0.2% Annual Chance Flood Hazard

## Resource Protection Areas

- Resource Protection Areas

## RAMP 2040 100-Yr Flood

- <0.33 ft
- 0.33 - 1 ft
- 1 - 2 ft
- 2 - 3 ft
- 3+ ft

## Stormwater Junctions

- Catch Basin
- Detention Facility
- End Wall / End Section
- Grate Inlet
- + Junction No Structure
- Manhole
- Other

- Yard Inlet
- ★ Stormwater Management Facility
- Unknown
- Stormwater Mains

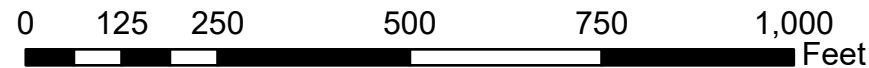


Esri Community Maps Contributors, DCGIS, Arlington County, VA, Fairfax County, VA, VGIN, © OpenStreetMap, Microsoft, Esri, TomTom, Garmin, SafeGraph, GeoTechnologies, Inc, METI/NASA, USGS, EPA, NPS, US Census Bureau, USDA, USFWS, Maper, Microsoft, WSS, OSEM

# OIPI GAP-TA Custis Trail

## Stormwater Map Series

Page 7 of 9



### Custis Trail Segments

- 6 - Thrifton Hill Park
- 7 - Spout Run
- 8 - North Highlands

### Flood Hazard Zones

- 1% Annual Chance Flood Hazard
- 0.2% Annual Chance Flood Hazard

### Resource Protection Areas

- Resource Protection Areas

### RAMP 2040 100-Yr Flood

- <0.33 ft
- 0.33 - 1 ft
- 1 - 2 ft
- 2 - 3 ft
- 3+ ft

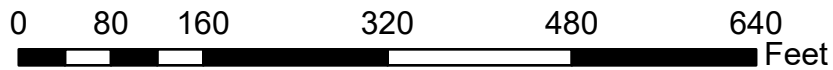
### Stormwater Junctions

- Catch Basin
- Detention Facility
- End Wall / End Section
- Grate Inlet
- + Junction No Structure
- Manhole
- Other

- Yard Inlet
- ★ Stormwater Management Facility
- Unknown
- Stormwater Mains



**OIPI GAP-TA Custis Trail**  
 Stormwater Map Series  
 Page 8 of 9



- Custis Trail Segments**
- 7 - Spout Run
  - 8 - North Highlands
  - 9 - Rosslyn

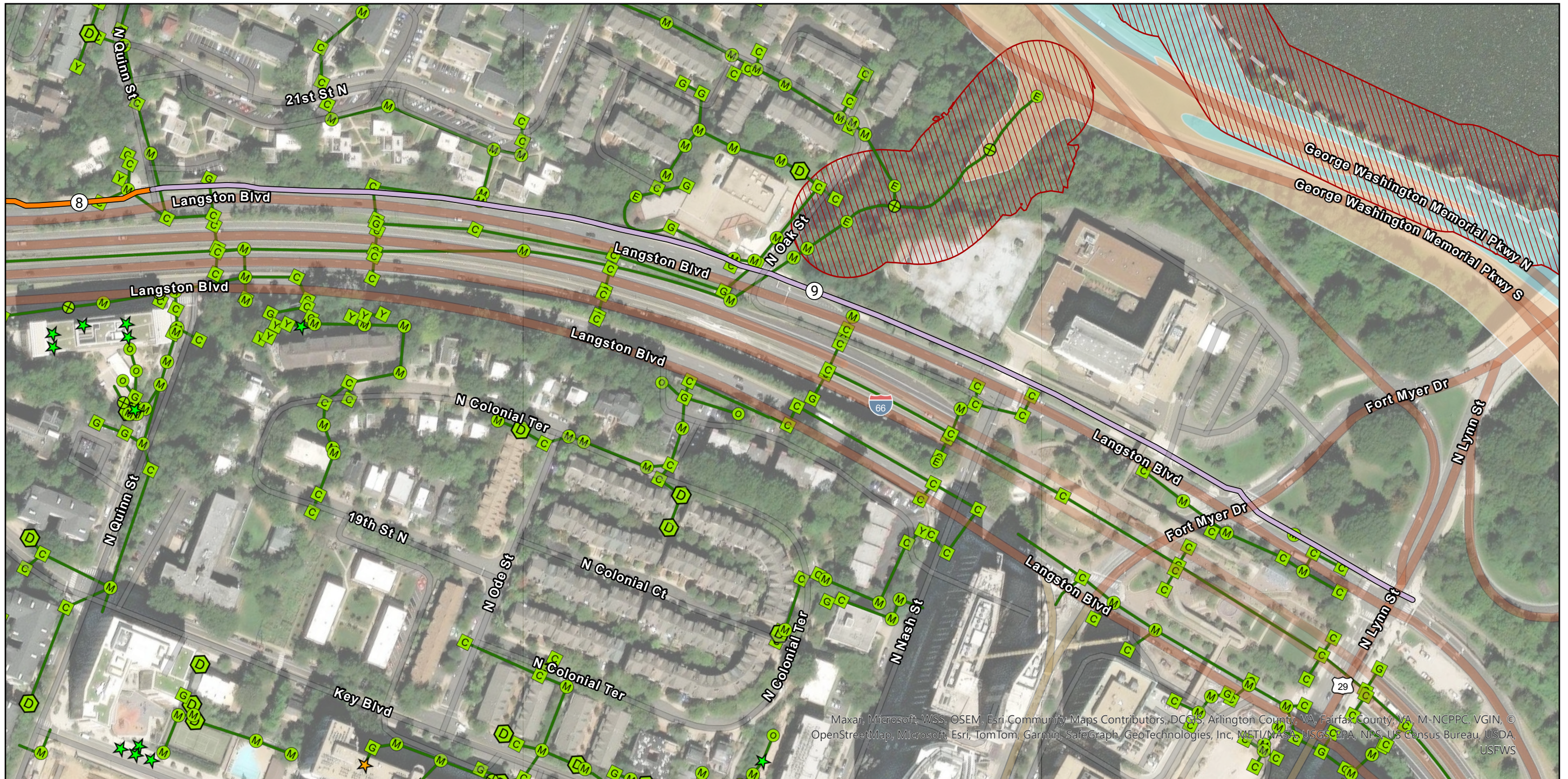
- Resource Protection Areas**
- Resource Protection Areas
- Stormwater Junctions**
- C Catch Basin
  - D Detention Facility

- E End Wall / End Section
- G Grate Inlet
- + Junction No Structure
- M Manhole
- O Other

- Y Yard Inlet
- ★ Stormwater Management Facility
- Unknown
- Stormwater Mains

Esri, Community Maps Contributors, BCGIS, Arlington County, VA, Fairfax County, VA, VGIN, © OpenStreetMap, Microsoft, Esri, TomTom, Garmin, SafeGraph, GeoTechnologies, Inc. METI/NOAA, USGS, EPA, NPS, US Census Bureau, USDA, USFWS, Maxar, Microsoft, WSS, OSEM

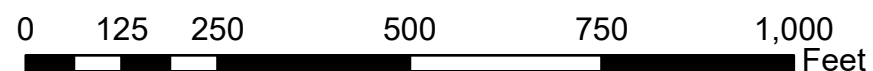




Maxar, Microsoft, WSS, OSEM, Esri, Community Maps Contributors, DCGIS, Arlington County, VA, Fairfax County, VA, M-NCPPC, VGIN, © OpenStreetMap, Microsoft, Esri, TomTom, Garmin, SafeGraph, GeoTechnologies, Inc, METI/NASA, USGS, EPA, NPS, US Census Bureau, USDA, USFWS

# OIPI GAP-TA Custis Trail

Stormwater Map Series  
Page 9 of 9



## Custis Trail Segments

- 8 - North Highlands
- 9 - Rosslyn

## Flood Hazard Zones

- 1% Annual Chance Flood Hazard
- 0.2% Annual Chance Flood Hazard

## Resource Protection Areas

- Resource Protection Areas

## Stormwater Junctions

- Catch Basin
- Detention Facility

- End Wall / End Section
- Grate Inlet
- Junction No Structure
- Manhole
- Other
- Yard Inlet

- Discharge Point
- Stormwater Management Facility
- Unknown
- Stormwater Mains