

# Arlington PhotoSPEED Program Expansion 2025

Arlington is expanding our Speed Safety Camera Program (PhotoSPEED) in January 2025 to eight (8) additional school zone locations:

## PhotoSPEED Existing Locations (Installed August 2024):

1. SB 600 block of S Carlin Springs Rd
2. SB 400 block of N George Mason Dr
3. EB 4500 block of Washington Blvd
4. SB Unit block of S Carlin Springs Rd
5. SB 1900 block of S George Mason Dr
6. EB 5200 block of Yorktown Blvd
7. SB 1200 block of S George Mason Dr
8. NB 1300 block of Kirkwood Rd
9. WB 5800 block of Wilson Blvd
10. NB 1900 block of S George Mason Dr

## PhotoSPEED Expansion Locations (Coming January 2025):

11. NB 700 block of N George Mason Dr
12. NB 1600 block of N Glebe Rd
13. WB 4100 block of Lorcom Ln
14. SB 2500 block of S Arlington Ridge Rd
15. EB 5800 block of Williamsburg Blvd
16. SB 1000 block of N McKinley Rd
17. EB 3500 block of 2nd St S
18. NB 1600 block of N Veitch St

*NB: Northbound | SB: Southbound | EB: Eastbound | WB: Westbound  
See PhotoSPEED locations on a map on the following page of this info sheet.*



**Warnings at the eight expansion locations will start Monday, January 6, 2025, the first day back to school for Arlington Public Schools.**

**Tickets and fines will begin February 5, 2024.**

### What is a speed safety camera?

- Speed safety cameras record images of vehicles traveling over the posted speed limit.
- These cameras are a safety tool, as they have been found to decrease speeding by 50% and reduce serious injury crashes by 35%.
- Virginia law limits speed safety cameras to school and work zones.
- Arlington selects locations for PhotoSPEED using safety data sources.

### How do PhotoSPEED tickets work?


- Warning signs are posted within 1,000 ft.
- The device uses radar to detect vehicle speeds, then the camera records video/photos of those speeding.
- Potential violations are reviewed by law enforcement, who issues a ticket to the registered owner of the vehicle.
- A speed camera ticket is a \$100 fine.
- A ticket does not add driver license points or affect insurance.

# Arlington PhotoSPEED Program Expansion 2025

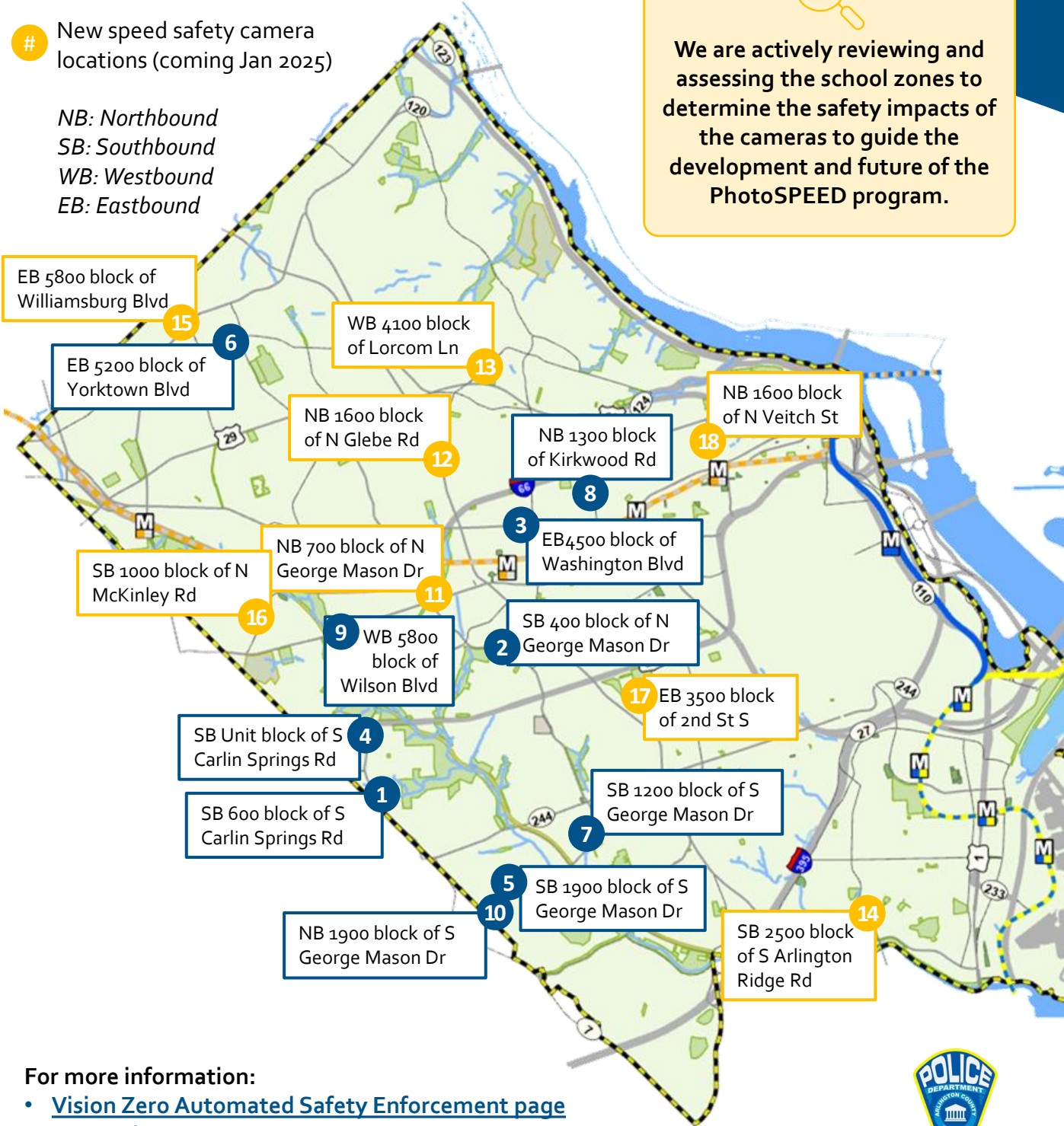
**#** Existing speed safety camera locations (installed Aug 2024)

**#** New speed safety camera locations (coming Jan 2025)

*NB: Northbound*  
*SB: Southbound*  
*WB: Westbound*  
*EB: Eastbound*



We are actively reviewing and assessing the school zones to determine the safety impacts of the cameras to guide the development and future of the PhotoSPEED program.



For more information:

- [Vision Zero Automated Safety Enforcement page](#)
- [ACPD PhotoSPEED page](#)

