



ARLINGTON VIRGINIA

2023

Lighting Standards

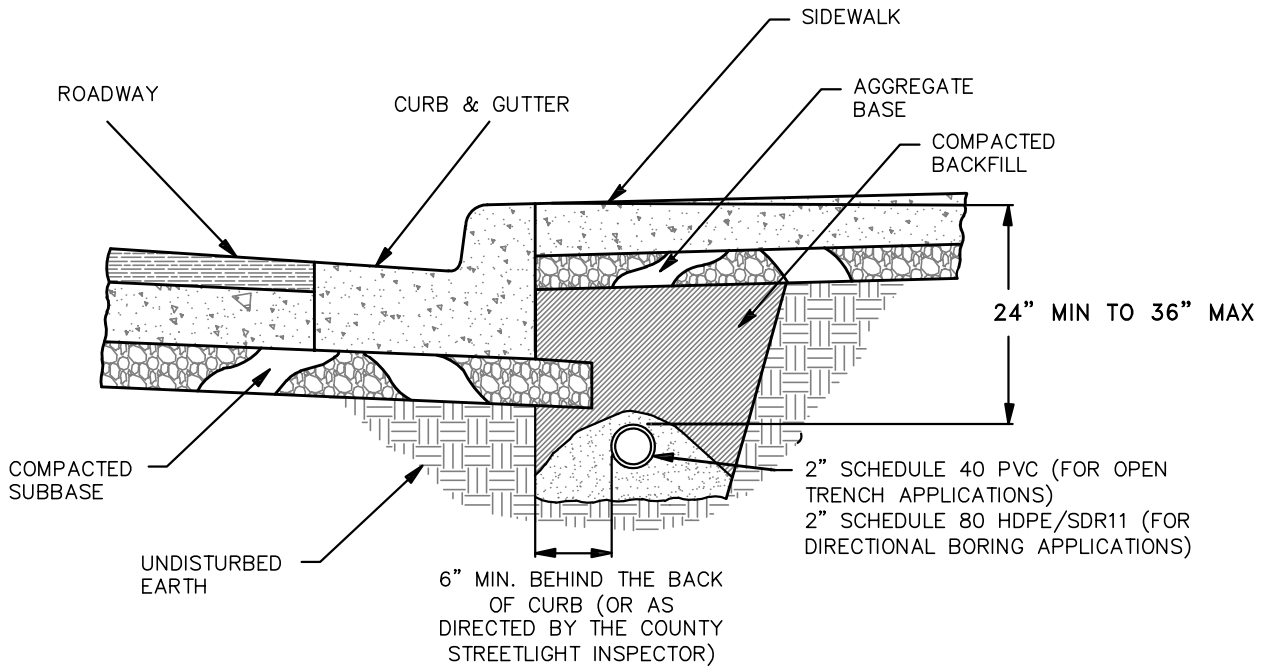
This document contains the construction detail drawings for lighting within Arlington County. Individual drawings may be updated periodically. Please refer to the table of contents for the latest published version.

The standards in this document refer to two main categories of lighting:

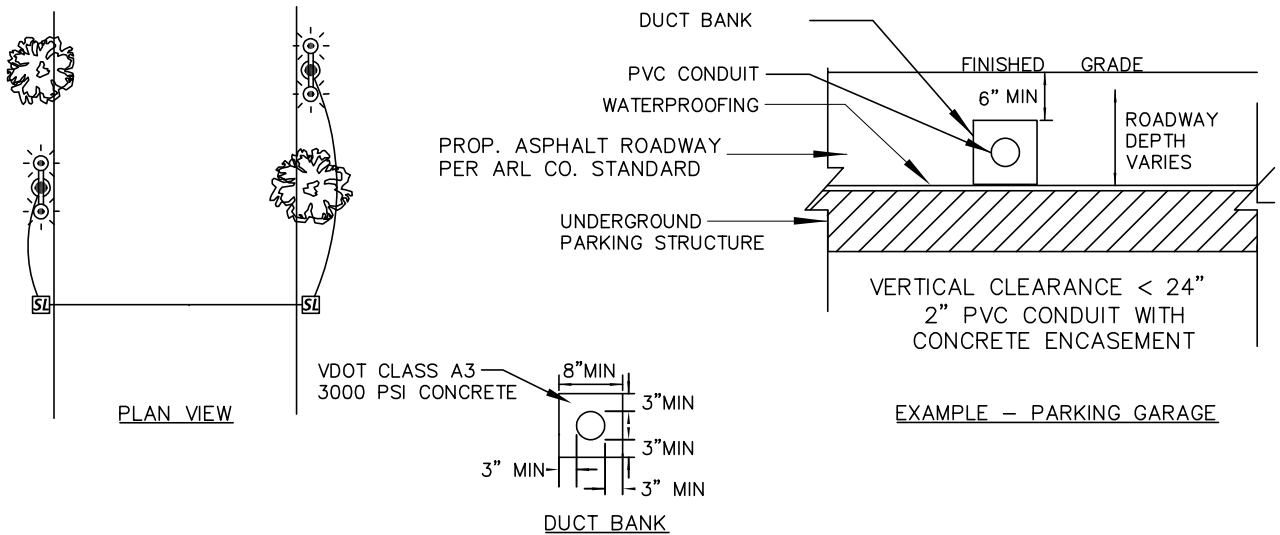
- (1) Roadway lighting which typically includes Cobra heads and teardrops with a luminaire mounting height of 25'-30'
- (2) Streetlights which typically includes decorative post-tops with a luminaire mounting height of 12'-16'.

Standard	Description	Latest Version
14030-01	Lighting Conduit Installation	September 2023
14040-01	Small Junction Box	September 2023
14040-02	Large Junction Box	September 2023
14050-01	Light Pole Wiring Detail	September 2020
14060-01	Streetlight Pole Foundation Standard Depth	September 2023
14060-02	Streetlight Pole Foundation Shallow Depth	September 2023
14060-03	Roadway Light Pole Foundation	September 2023
14060-04	Roadway Light Pole Foundation Shallow Depth - Option 1	September 2023
14060-05	Roadway Light Pole Foundation Shallow Depth - Option 2	September 2023
14070-01	Transformer Base	September 2023
14080-01	Decorative Post-Top Composite Streetlight Pole (Direct-Buried)	September 2020
14080-02	Decorative Post-Top Composite Streetlight Pole	September 2023
14080-03	Decorative Post-Top Aluminum Streetlight Pole	September 2023
14080-04	Octaflute Aluminum Roadway Light Pole	September 2020
14080-05	Octaflute Aluminum Roadway Light Pole Details	September 2020
14080-06	Round Tapered Composite Roadway Light Pole (Direct-Buried)	September 2023
14080-07	Round Tapered Composite Roadway Light Pole	September 2023
14090-01	Roadway Luminaire Arm Types	September 2020
14090-02	Decorative Single Arm for Rear Mount Octaflute Poles	September 2020
14090-03	Decorative Post-Top Dual Arm	September 2023
14090-04	Arm Adaptor for Teardrop	September 2020
14100-01	Electrical Service	September 2023
14110-01	Decorative Post-Top Luminaire	September 2020
14110-02	Decorative Post-Top LED Engine	September 2020
14110-03	Cobra Head LED Luminaire	September 2023
14110-04	Teardrop Luminaire	September 2020
14112-01	Decorative Post-Top Aluminum Streetlight Pole with Single Post-Top Luminaire	September 2020
14112-02	Decorative Post-Top Aluminum Streetlight Pole with Double Post-Top Luminaires	September 2020
14112-03	Round Tapered Composite Roadway Light Pole on Foundation with Single Cobra Head Luminaire	September 2020
14112-04	Round Tapered Composite Roadway Light Pole on Foundation with Double Cobra Head Luminaires	September 2020
14112-05	Octaflute Aluminum Roadway Light Pole with Single Cobra Head Luminaire	September 2020
14112-06	Octaflute Aluminum Dual Arm Roadway Light Pole with Double Cobra Head Luminaires	September 2020

14112-07	Octaflute Aluminum Roadway Light Pole with Single Teardrop Luminaire	September 2020
14112-08	Octaflute Aluminum Roadway Light Pole with Double Teardrop Luminaires	September 2020
14120-01	Pole Decals	September 2023
14130-01	As-Built Drawing (Typical)	September 2020
14140-01	Typical Lighting Layout	September 2020
14140-02	Typical Pole Configurations	September 2020
14140-03	Lighting Equipment Schedules	September 2023



TYPICAL CONDUIT INSTALLATION



NOTES:

1. TYPICAL CONDUIT INSTALLATION SHALL BE INSTALLED A MINIMUM OF 24" & NO MORE THAN 36" BELOW FINISH GRADE.

LIGHTING CONDUIT INSTALLATION

1 09/23

REVISION & DATE



ARLINGTON COUNTY, VIRGINIA
DEPARTMENT OF ENVIRONMENTAL SERVICES

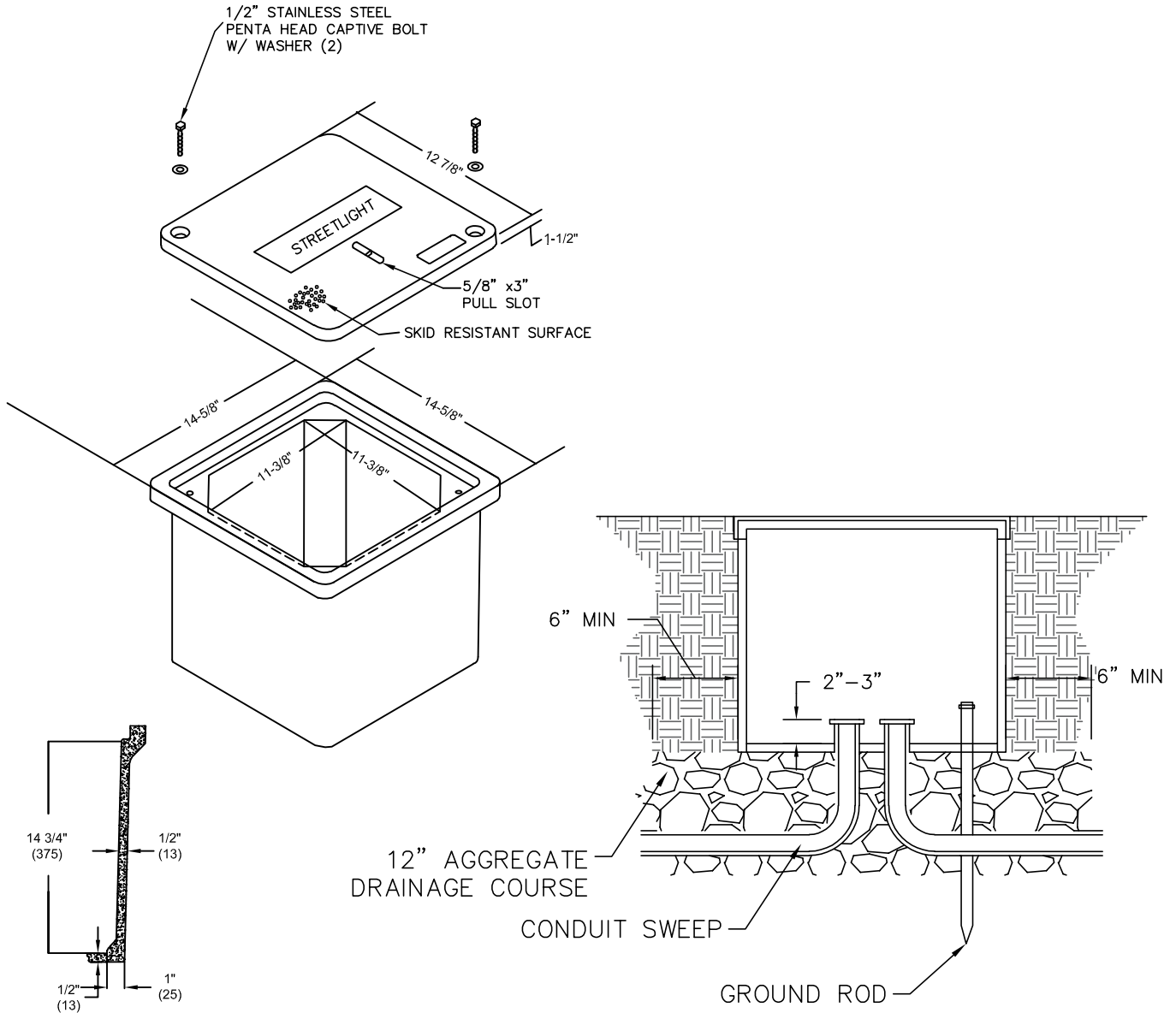
DRAWING NO.
14030-01

BOXES (STACKABLE)
COVERS

	DESCRIPTION	DIMENSION A	DESIGN/TEST LOAD #	ANSI TIER*
JUNCTION BOX	OPEN BOTTOM	12-7/8"	22,500/33,750	22
COVER	HEAVY DUTY W/2 BOLTS	N/A	22,500/33,750	22

DIMENSIONS & WEIGHTS IN PARENTHESES ARE METRIC EQUIVALENT.

* LOADINGS COMPLY WITH ANSCI/SCTE 77



NOTES:

1. ALL CONDUIT SHALL HAVE 2" SEPARATION AND WITH GROUNDING END BUSHING INSTALLED.
2. JUNCTION BOX SHALL HAVE MIN. 4" CLEARANCE NEAR THE CURB.
3. JUNCTION BOX SHALL INCLUDE A 5/8" DIA CU. GROUND ROD INSTALLED PER NEC ARTICLE 250 WITH A MINIMUM OF 8 FEET OF CONTACT WITH SOIL.

SMALL JUNCTION BOX

1 09/23

REVISION & DATE



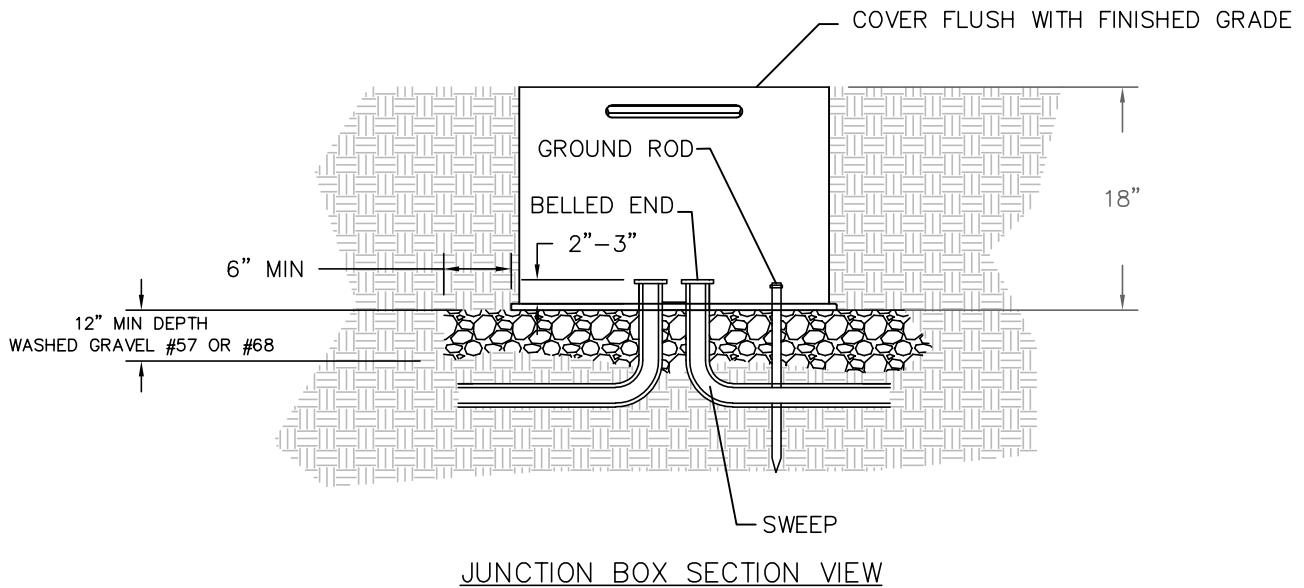
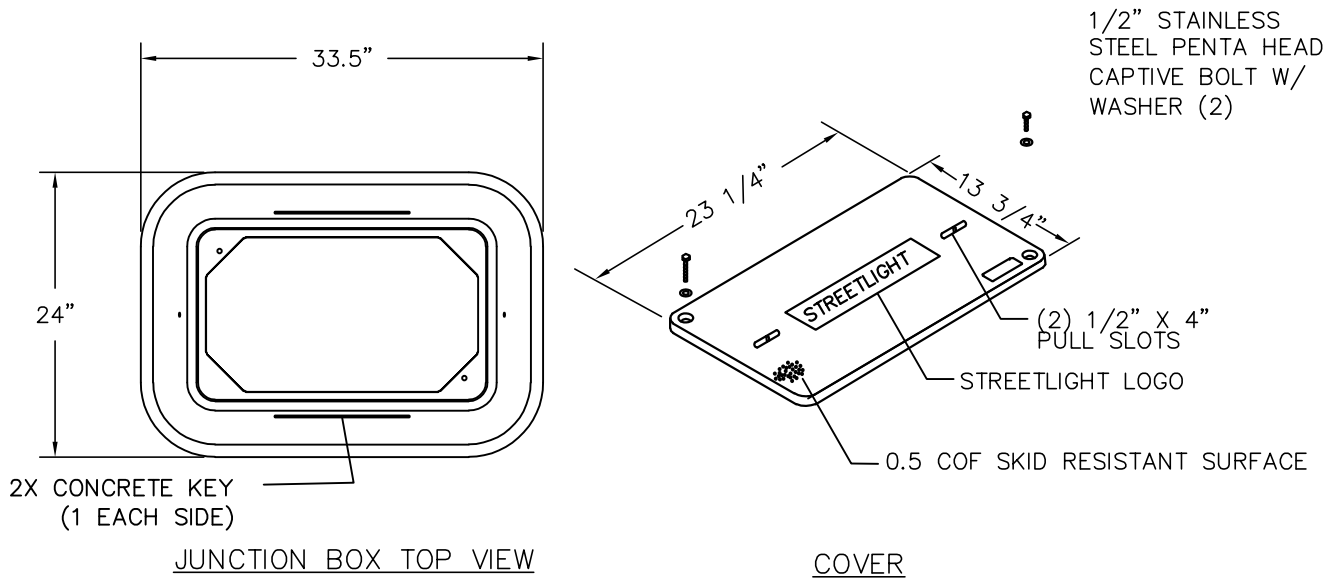
ARLINGTON COUNTY, VIRGINIA
DEPARTMENT OF ENVIRONMENTAL SERVICES

DRAWING NO.
14040-01

BOXES (NESTABLE)

	DESCRIPTION	DESIGN/TEST LOAD #	ANSI TIER*
JUNCTION BOX	OPEN BOTTOM	22,500/33,750	22
COVER	HEAVY DUTY W/2 BOLTS	22,500/33,750	22

* LOADINGS COMPLY WITH ANSCI/SCTE 77



NOTES:

1. ALL CONDUIT SHALL HAVE 2" SEPARATION AND WITH GROUNDING END BUSHING INSTALLED.
2. JUNCTION BOX SHALL HAVE MIN. 4" CLEARANCE NEAR THE CURB.
3. JUNCTION BOX SHALL INCLUDE A 5/8" DIA CU. GROUND ROD INSTALLED PER NEC ARTICLE 250 WITH A MINIMUM OF 8 FEET OF CONTACT WITH SOIL.

LARGE JUNCTION BOX

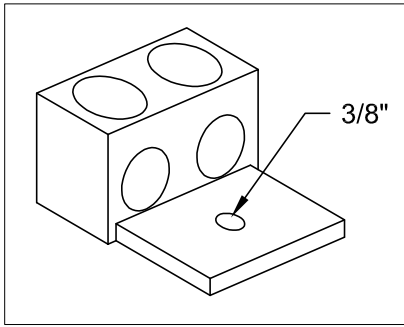
1 09/23

REVISION & DATE

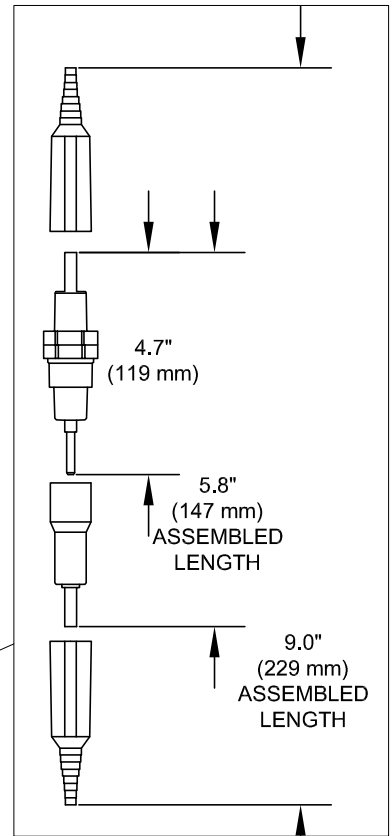


ARLINGTON COUNTY, VIRGINIA
DEPARTMENT OF ENVIRONMENTAL SERVICES

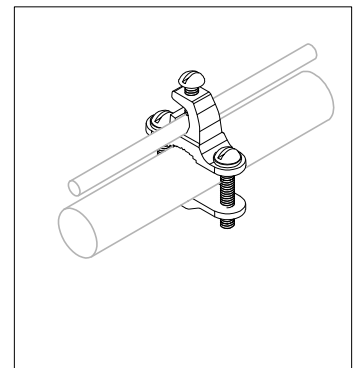
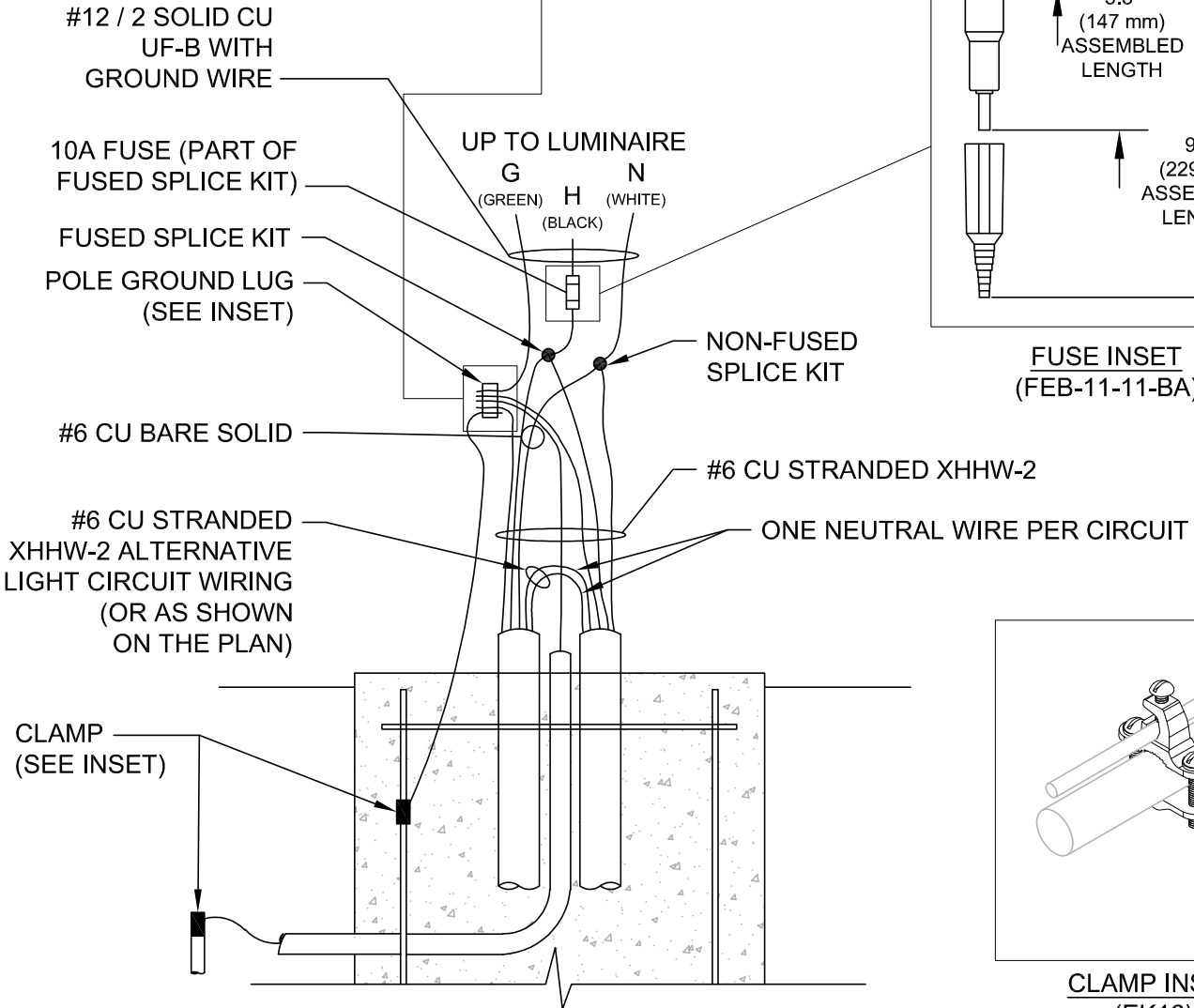
DRAWING NO.
14040-02



GROUND LUG INSET
(PART # AU-250)



FUSE INSET
(FEB-11-11-BA)



CLAMP INSET
(EK16)

NOTES:

1. CONTRACTOR SHALL INSTALL 4' SLACK OF ALTERNATE CIRCUIT CONDUCTOR IN THE BASE OF THE POLES WHERE THERE IS NO JUNCTION BOX PRESENT BETWEEN ALTERNATE POLES.

LIGHT POLE WIRING DETAIL

REVISION & DATE



ARLINGTON COUNTY, VIRGINIA
DEPARTMENT OF ENVIRONMENTAL SERVICES

DRAWING NO.
14050-01

*THIS BOLT CIRCLE AND FOUNDATION TYPE ARE GENERALLY USED FOR STREET LIGHTS UP TO 16' IN HEIGHT.

(4) 3/4"x27"x3" ELL H.D. GALV. ANCHOR BOLTS W/ (2) HEX NUTS, 2" O.D. FLAT WASHERS PER BOLT

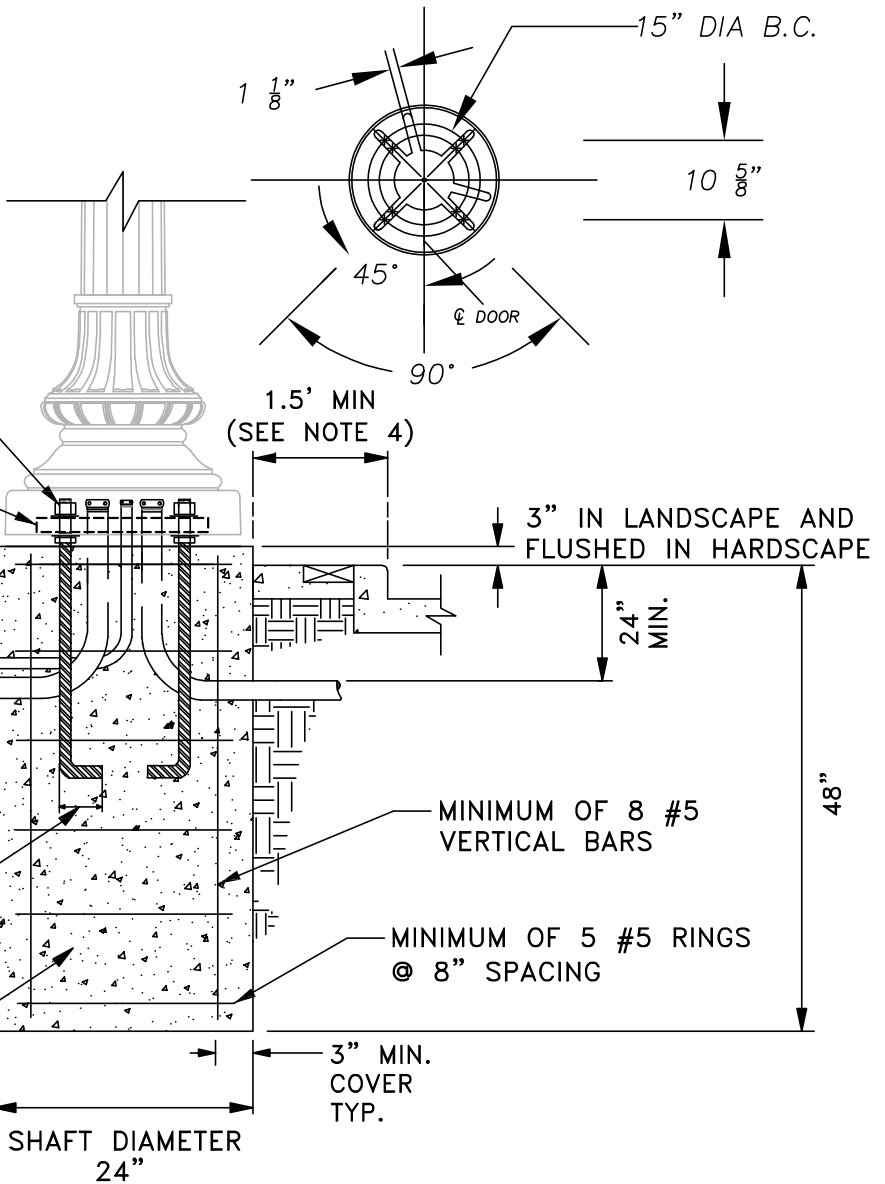
POLE BASE PLATE

FINISHED GRADE

1" PVC FOR GROUND ROD

5/8" DIA. CU. GROUND ROD PER NEC REQUIREMENTS. SEE NOTE 5 FOR WIRING DETAILS

VDOT CLASS A3 GENERAL CONCRETE



NOTES:

1. BOLT HOLE PATTERN SHALL BE PARALLEL TO THE CURB.
2. ALL BARS SHALL HAVE MINIMUM OF 3" OF CONCRETE COVER.
3. NO WIRING DETAILS ARE SHOWN IN THIS DRAWING. REFER TO DRAWING 14050-01 FOR WIRING DETAIL.
4. MINIMUM OFFSET FROM FACE OF CURB. REFER TO SPECIFIC STATION AND OFFSET DISTANCES ON PLANS. CONFIRM FIELD ADJUSTMENT AS REQUIRED.
5. THE CONTACT LENGTH SHALL BE PER NEC ARTICLE 250. GENERALLY, THE GROUND ROD SHALL BE BELOW MOISTURE LEVEL WITH MINIMUM SOIL CONTACT OF 8', OR 45 DEGREE ANGLE, OR LAID 30" DEEP HORIZONTALLY.
6. CONTRACTOR TO ENSURE ADEQUATE SPACING BETWEEN CONDUITS FOR INSTALLATION OF BUSHINGS/BELLED ENDS
7. THIS FOUNDATION IS DESIGNED BASED ON TYPICAL SOIL PARAMETERS AS DETAILED IN GENERAL PARAGRAPHS OF THE SECTION 14060 ARLINGTON COUNTY LIGHTING SPECS. IF ACTUAL SITE CONDITION VARY FROM THOSE ASSUMPTIONS, A SPECIAL FOUNDATION DESIGN MAY BE REQUIRED.
8. THE CONCRETE SHALL BE VDOT CLASS A3 GENERAL CLASS.

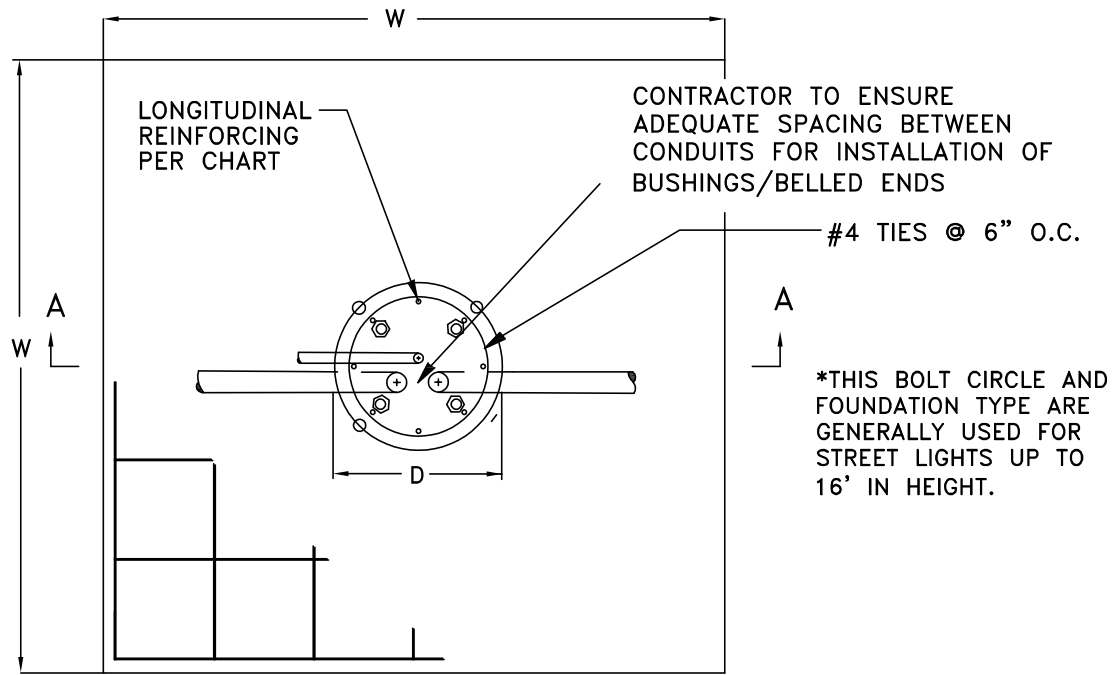
STREETLIGHT POLE FOUNDATION
STANDARD DEPTH

1	09/23
REVISION & DATE	



ARLINGTON COUNTY, VIRGINIA
DEPARTMENT OF ENVIRONMENTAL SERVICES

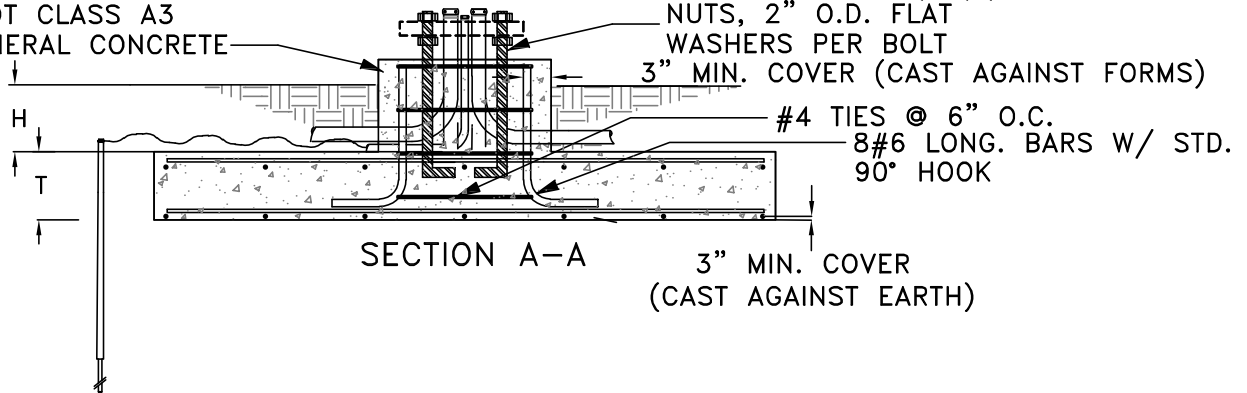
DRAWING NO.
14060-01



PLAN VIEW

* NOT TO SCALE

VDOT CLASS A3
GENERAL CONCRETE



SECTION A-A

3" MIN. COVER
(CAST AGAINST EARTH)

POLE ID	D	H	T	W	TOP (EACH WAY)	BOTTOM (EACH WAY)
16' POLE	2'-6"	1'-0"	1'-0"	5'-0"	7-#4	7-#4

NOTES:

1. THIS FOUNDATION IS DESIGNED BASED ON TYPICAL SOIL PARAMETERS AS DETAILED IN THE GENERAL PARAGRAPHS OF THE SECTION 14060 ARLINGTON COUNTY LIGHTING SPECS. IF ACTUAL SITE CONDITION VARY FROM THOSE ASSUMPTIONS, A SPECIAL FOUNDATION DESIGN MY BE REQUIRED.
2. PRE-APPROVAL FROM THE COUNTY IS REQUIRED.
3. ALL BARS SHALL HAVE MINIMUM OF 3" OF CONCRETE COVER.
4. FOUNDATION SHALL BE GROUNDED PER NEC USING CLAMPS AND WIRING OUTLINED IN DRAWING 14050-01.
5. THE CONTACT LENGTH SHALL BE PER NEC ARTICLE 250. GENERALLY, THE GROUND ROD SHALL BE BELOW MOISTURE LEVEL WITH MINIMUM SOIL CONTACT OF 8', OR 45 DEGREE ANGLE, OR LAID 30" DEEP HORIZONTALLY.
6. THE CONCRETE SHALL BE VDOT CLASS A3 GENERAL CLASS.

STREETLIGHT POLE FOUNDATION
SHALLOW DEPTH

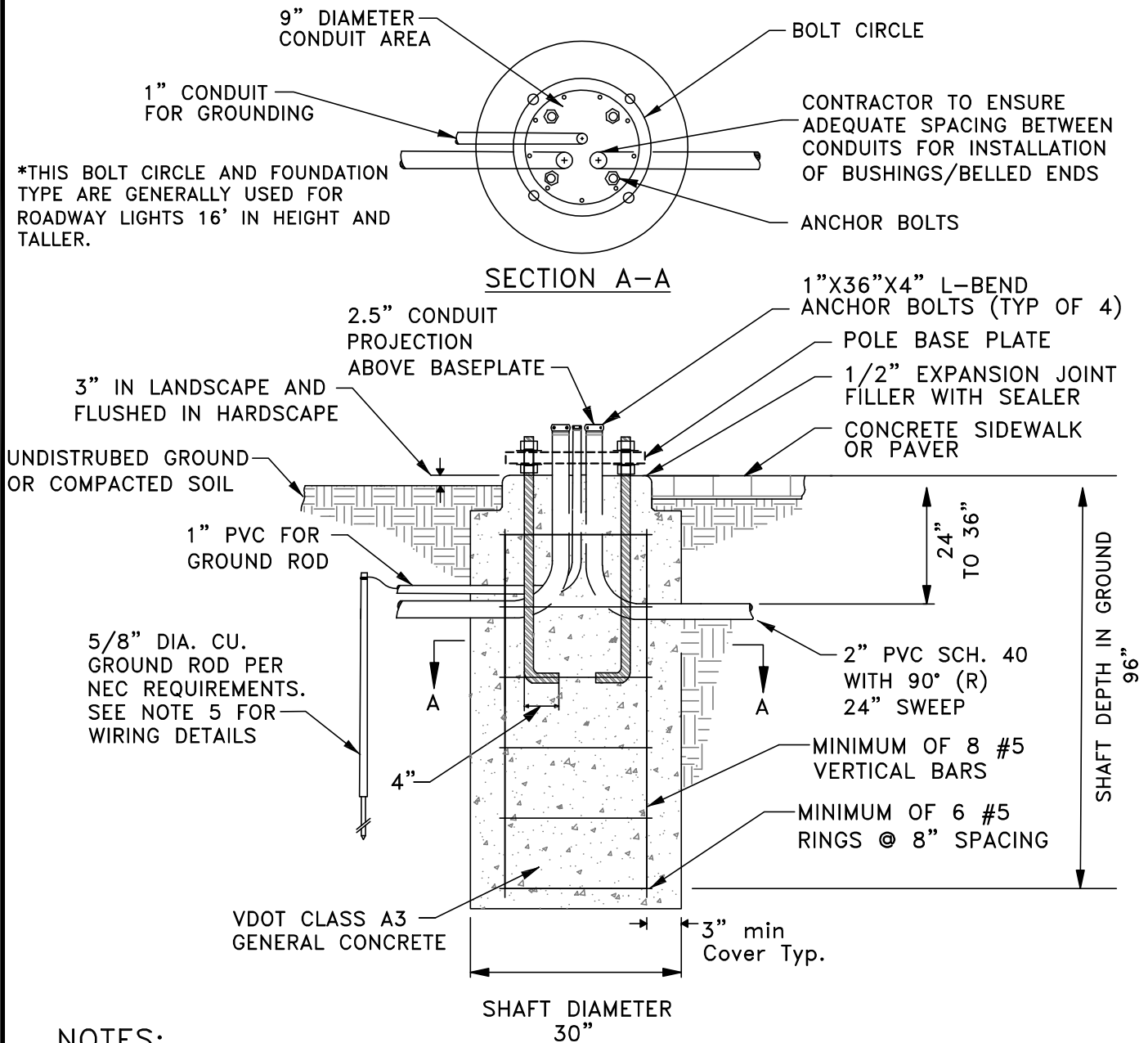
1 09/23

REVISION & DATE



ARLINGTON COUNTY, VIRGINIA
DEPARTMENT OF ENVIRONMENTAL SERVICES

DRAWING NO.
14060-02



NOTES:

1. FOUNDATION TOP SHALL BE FINISHED AND LEVEL.
2. BOLT PATTERN SHALL BE PARALLEL TO THE CURB.
3. ALL CONDUIT RADII ARE 90 (R) 24" SWEEPS.
4. ALL BARS SHALL HAVE MINIMUM OF 3" OF CONCRETE COVER.
5. NO WIRING DETAILS ARE SHOWN IN THIS DRAWING. REFER TO DRAWING 14050-1 FOR WIRING DETAIL.
6. THE CONTACT LENGTH SHALL BE PER NEC ARTICLE 250. GENERALLY, THE GROUND ROD SHALL BE BELOW MOISTURE LEVEL WITH MINIMUM SOIL CONTACT OF 8', OR 45 DEGREE ANGLE, OR LAID 30" DEEP HORIZONTALLY.
7. THIS FOUNDATION IS DESIGNED BASED ON TYPICAL SOIL PARAMETERS AS DETAILED IN THE GENERAL PARAGRAPHS OF THE SECTION 14060 ARLINGTON COUNTY LIGHTING SPECS. IF ACTUAL SITE CONDITION VARY FROM THOSE ASSUMPTIONS, A SPECIAL FOUNDATION DESIGN MAY BE REQUIRED.
8. THE CONCRETE SHALL BE VDOT CLASS A3 GENERAL CLASS.

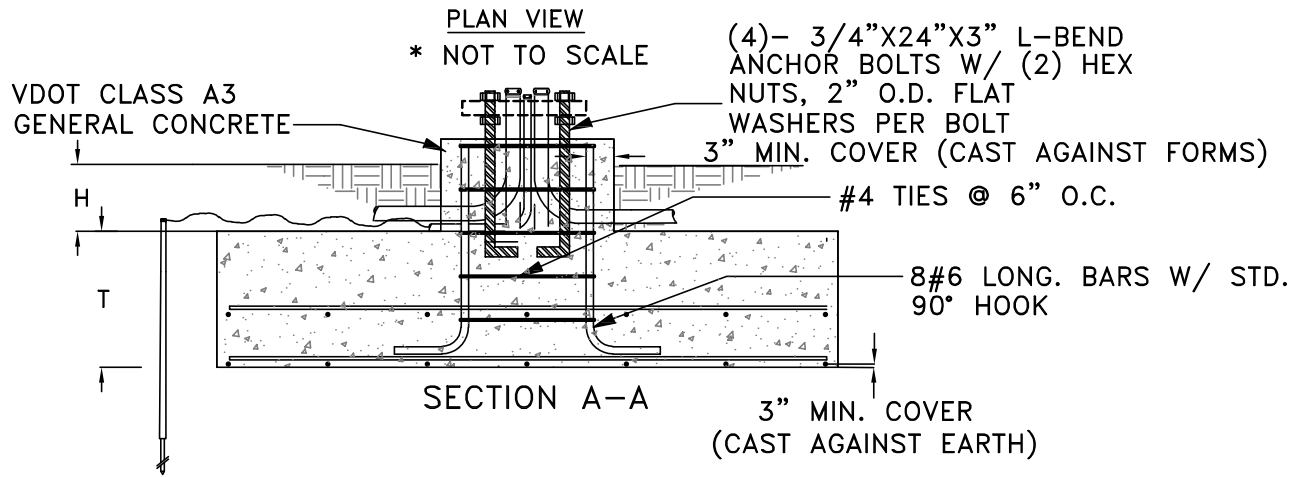
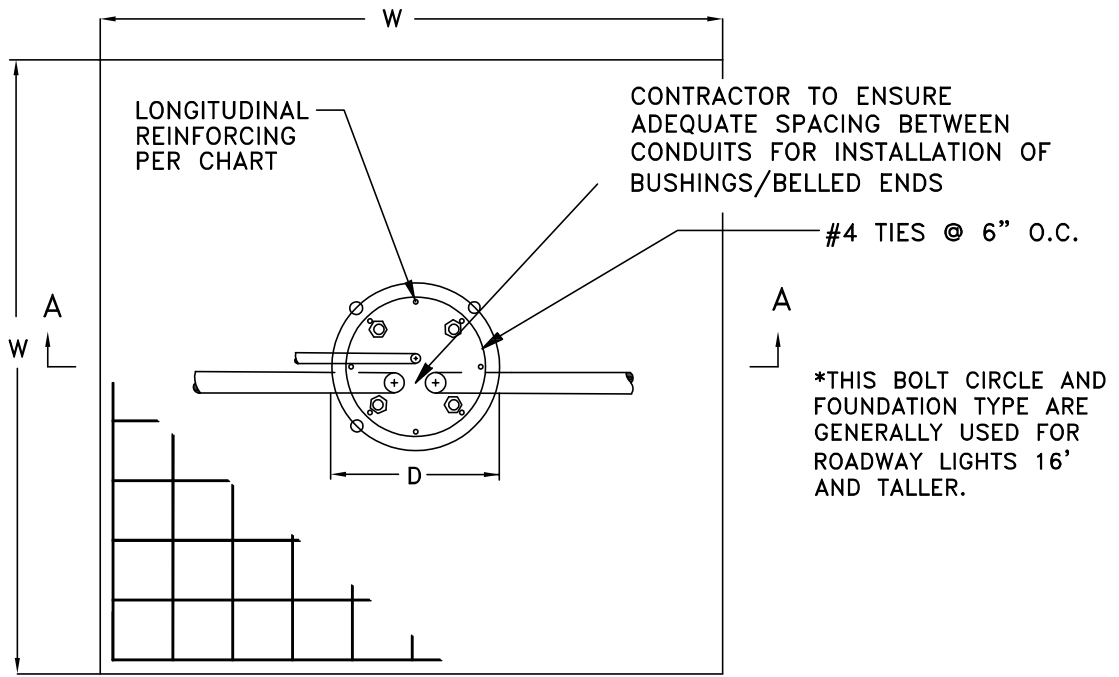
ROADWAY LIGHT POLE FOUNDATION

1	9/23
REVISION & DATE	



ARLINGTON COUNTY, VIRGINIA
DEPARTMENT OF ENVIRONMENTAL SERVICES

DRAWING NO.
14060-03



POLE ID	D	H	T	W	TOP E.W.	BOTTOM E.W.
30' POLE	2'-6"	1'-0"	2'-0"	6'-0"	11-#5	11-#5

NOTES:

- FOUNDATION IS BASED ON SOIL BEARING CAPACITY OF 2,000 PSF WITH LEVEL GROUND SURFACE.
- ALL BARS SHALL HAVE MINIMUM OF 3" OF CONCRETE COVER.
- FOUNDATION SHALL BE GROUNDED PER NEC USING CLAMPS AND WIRING OUTLINED IN DRAWING 14050-01.
- THE CONTACT LENGTH SHALL BE PER NEC ARTICLE 250. GENERALLY, THE GROUND ROD SHALL BE BELOW MOISTURE LEVEL WITH MINIMUM SOIL CONTACT OF 8', OR 45 DEGREE ANGLE, OR LAID 30" DEEP HORIZONTALLY.
- THIS FOUNDATION IS DESIGNED BASED ON TYPICAL SOIL PARAMETERS AS DETAILED IN THE GENERAL PARAGRAPHS OF THE SECTION 14060 ARLINGTON COUNTY LIGHTING SPECS. IF ACTUAL SITE CONDITION VARY FROM THOSE ASSUMPTIONS, A SPECIAL FOUNDATION DESIGN MAY BE REQUIRED.
- THE CONCRETE SHALL BE VDOT CLASS A3 GENERAL CLASS

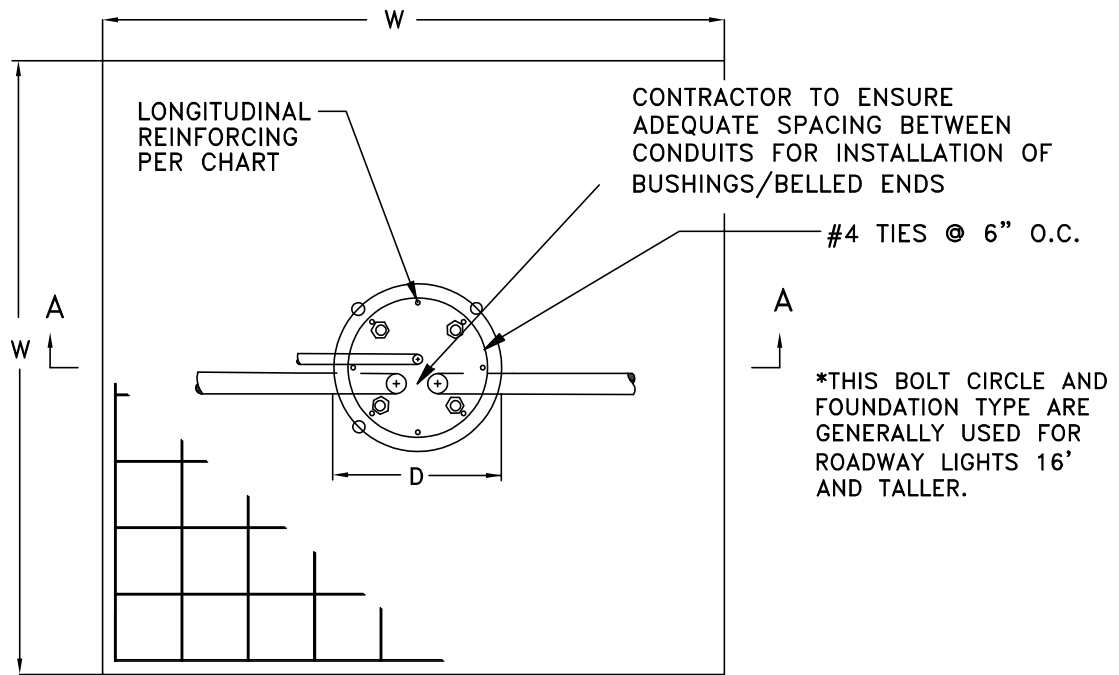
**ROADWAY LIGHT POLE FOUNDATION
SHALLOW DEPTH - OPTION 1**

1	09/23
REVISION & DATE	



ARLINGTON COUNTY, VIRGINIA
DEPARTMENT OF ENVIRONMENTAL SERVICES

DRAWING NO.
14060-04



PLAN VIEW

* NOT TO SCALE

(4)- 3/4"X26"X4" L-BEND ANCHOR BOLTS W/ (2) HEX NUTS, 2" O.D. FLAT WASHERS PER BOLT

3" MIN. COVER (CAST AGAINST FORMS)

VDOT CLASS A3 GENERAL CONCRETE

H

T

#4 TIES @ 6" O.C.

8#6 LONG. BARS W/ STD. 90° HOOK

SECTION A-A

3" MIN. COVER (CAST AGAINST EARTH)

POLE ID	D	H	T	W	TOP E.W.	BOTTOM E.W.
30' POLE	2'-6"	1'-0"	2'-0"	6'-0"	11-#5	11-#5

NOTES:

1. IF ACTUAL SITE CONDITIONS VARY FROM ABOVE ASSUMPTION, REDESIGN IS REQUIRED.
2. PRE-APPROVAL FROM THE COUNTY IS REQUIRED.
3. ALL BARS SHALL HAVE MINIMUM OF 3" OF CONCRETE COVER.
4. FOUNDATION SHALL BE GROUNDED PER NEC USING CLAMPS AND WIRING OUTLINED IN DRAWING 14050-01.
5. THE CONTACT LENGTH SHALL BE PER NEC ARTICLE 250. GENERALLY, THE GROUND ROD SHALL BE BELOW MOISTURE LEVEL WITH MINIMUM SOIL CONTACT OF 8', OR 45 DEGREE ANGLE, OR LAID 30" DEEP HORIZONTALLY.
6. THIS FOUNDATION IS DESIGNED BASED ON TYPICAL SOIL PARAMETERS AS DETAILED THE GENERAL PARAGRAPHS OF THE SECTION 14060 ARLINGTON COUNTY LIGHTING SPECS. IF ACTUAL SITE CONDITION VARY FROM THOSE ASSUMPTIONS, A SPECIAL FOUNDATION DESIGN MAY BE REQUIRED.
7. THE CONCRETE SHALL BE VDOT CLASS A3 GENERAL CLASS.

**ROADWAY LIGHT POLE FOUNDATION
SHALLOW DEPTH - OPTION 2**

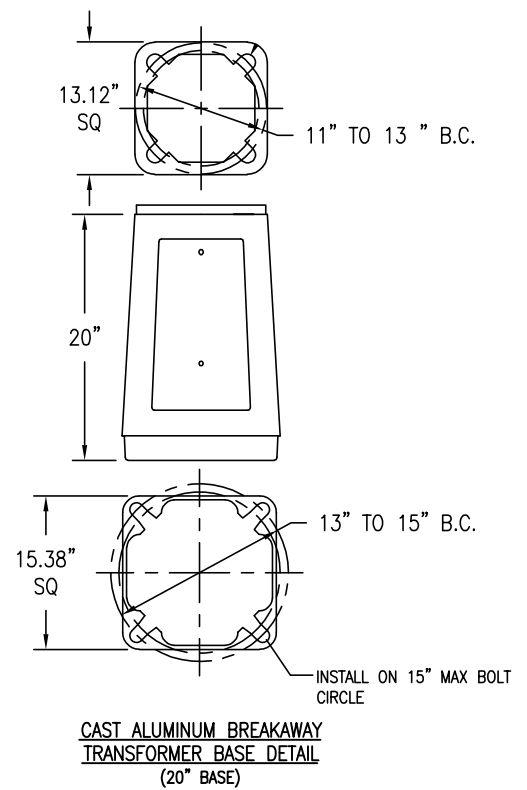
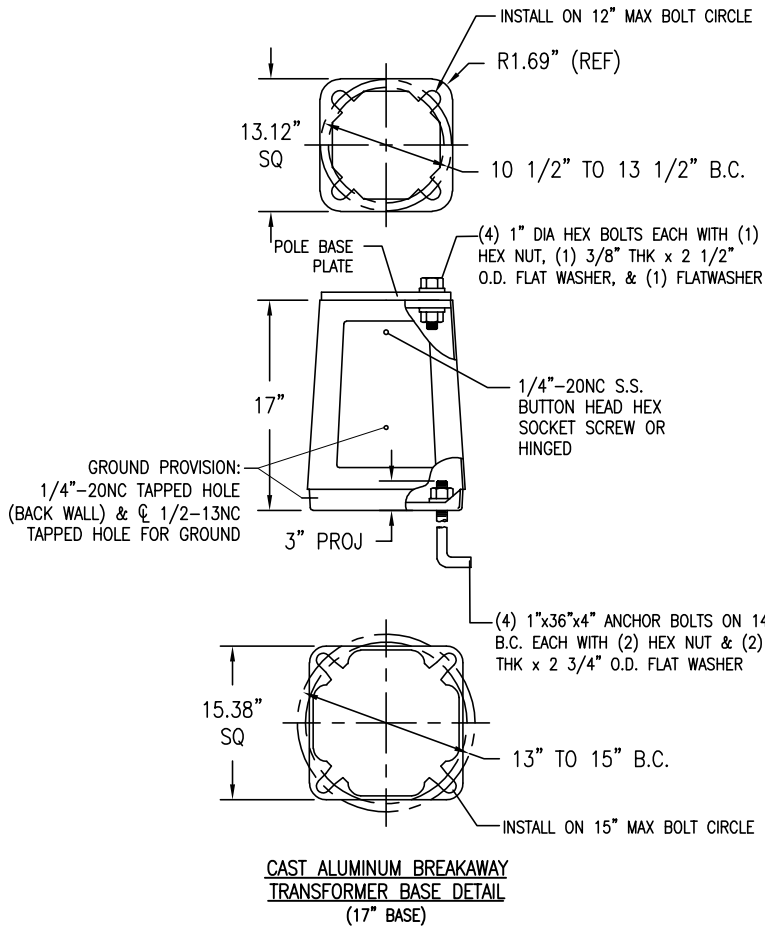
1 09/23

REVISION & DATE



ARLINGTON COUNTY, VIRGINIA
DEPARTMENT OF ENVIRONMENTAL SERVICES

DRAWING NO.
14060-05



TRANSFORMER BASE

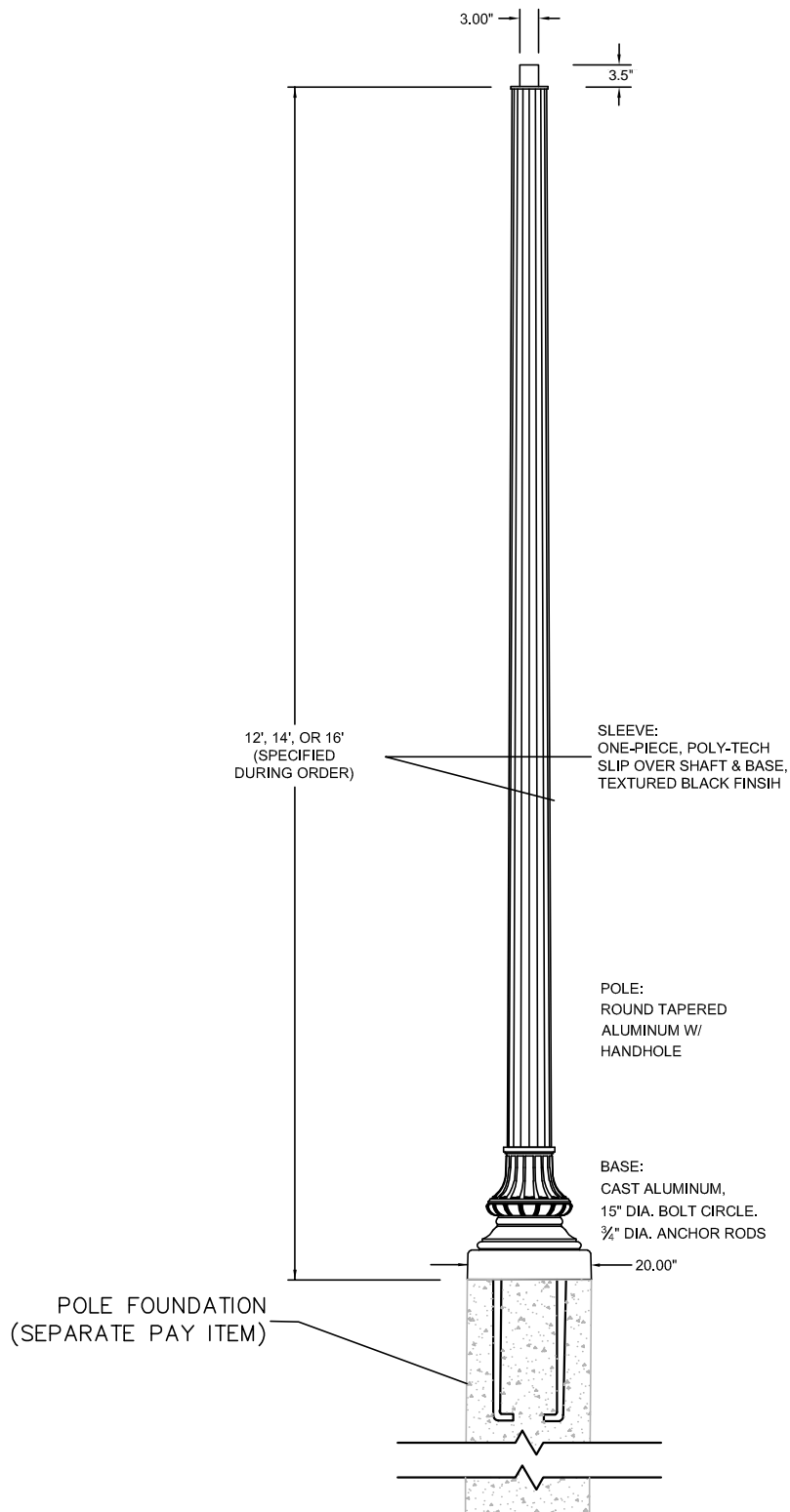
1 09/23

REVISION & DATE



ARLINGTON COUNTY, VIRGINIA
DEPARTMENT OF ENVIRONMENTAL SERVICES

DRAWING NO.
14070-01



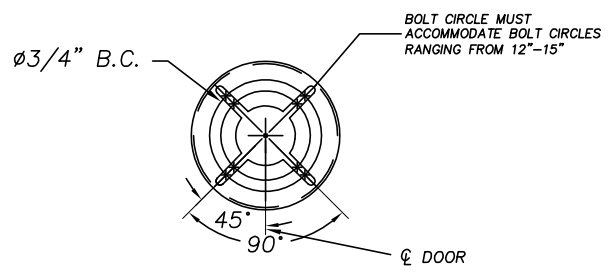
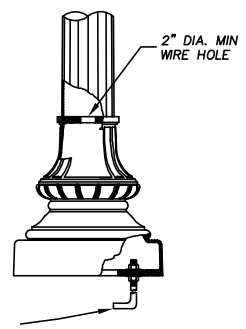
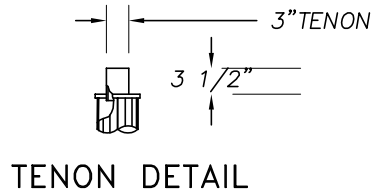
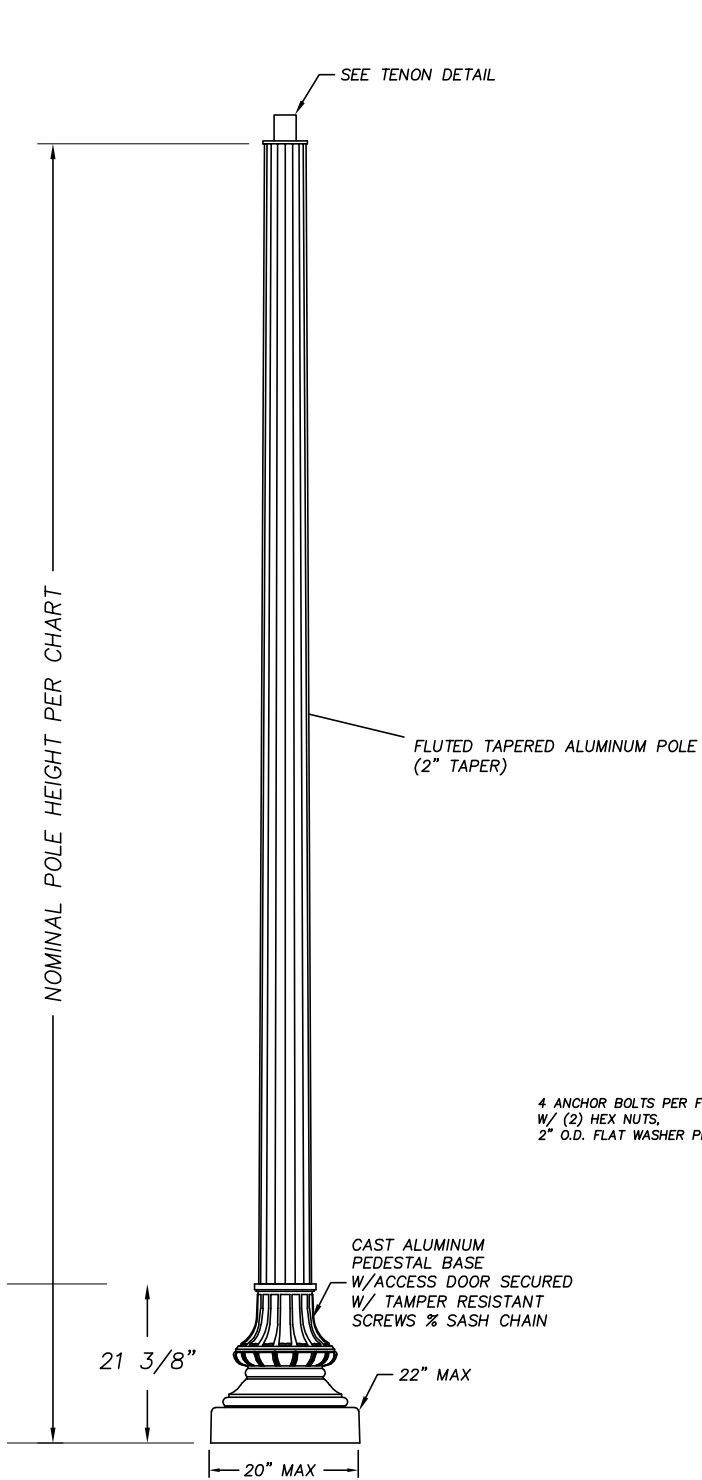
DECORATIVE POST-TOP COMPOSITE
STREET LIGHT POLE

1	09/23
REVISION & DATE	



ARLINGTON COUNTY, VIRGINIA
DEPARTMENT OF ENVIRONMENTAL SERVICES

DRAWING NO.
14080-02



POLE DETAIL

BASE DETAIL

- NOTES:
1. CONTRACTOR SHALL INSTALL POLE SO THAT THE ACCESS DOOR FACES AWAY FROM TRAFFIC.
 2. FOUNDATION SURFACE WITHIN MUST BE LEVEL.

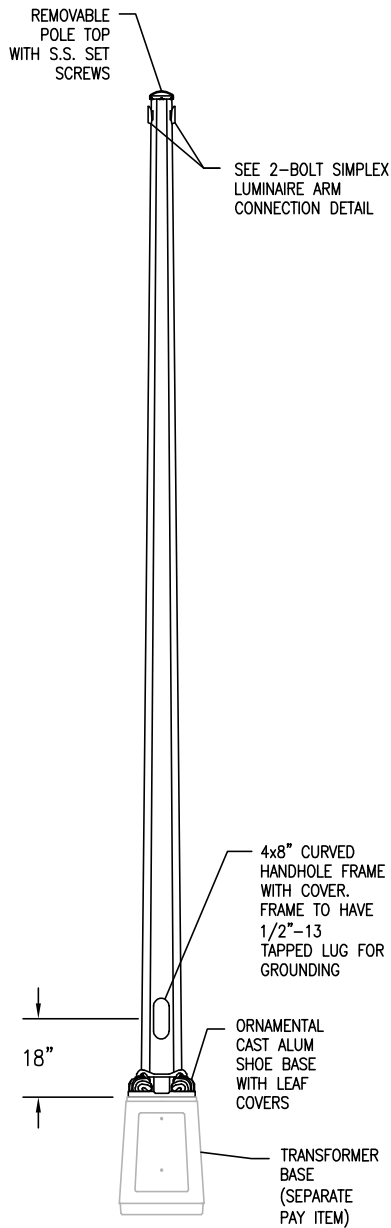
DECORATIVE POST-TOP ALUMINUM STREET LIGHT POLE

1	09/23
REVISION & DATE	



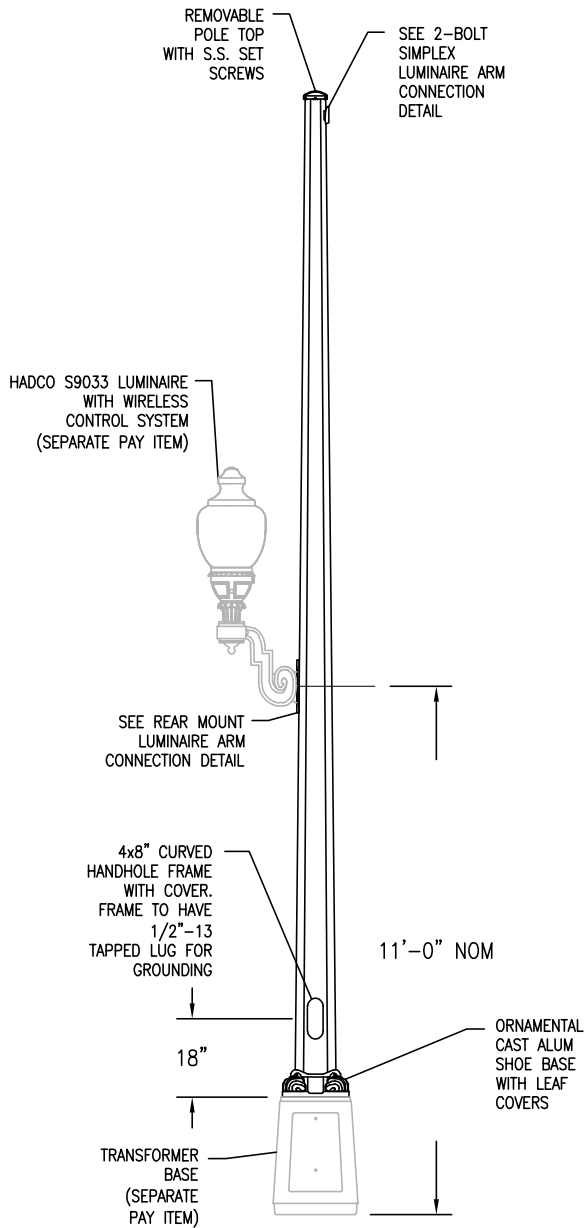
ARLINGTON COUNTY, VIRGINIA
DEPARTMENT OF ENVIRONMENTAL SERVICES

DRAWING NO.
14080-03



ALUMINUM OCTAFLUTE

(a)



ALUMINUM OCTAFLUTE WITH REAR MOUNT

(b)

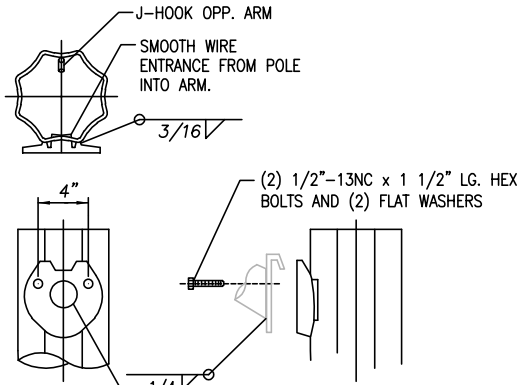
OCTAFLUTE ALUMINUM ROADWAY LIGHT POLES

REVISION & DATE



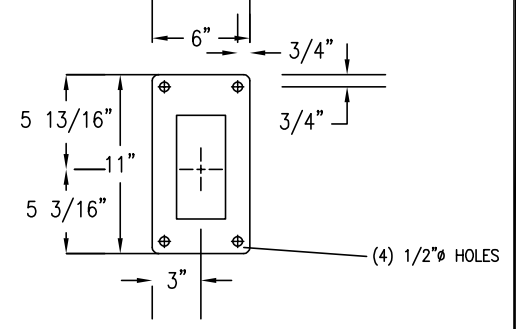
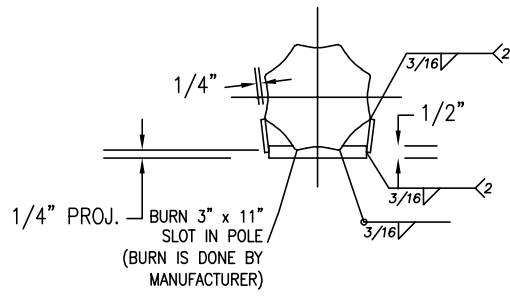
ARLINGTON COUNTY, VIRGINIA
DEPARTMENT OF ENVIRONMENTAL SERVICES

DRAWING NO.
14080-04

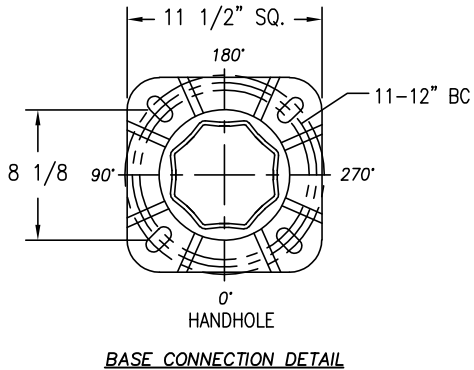
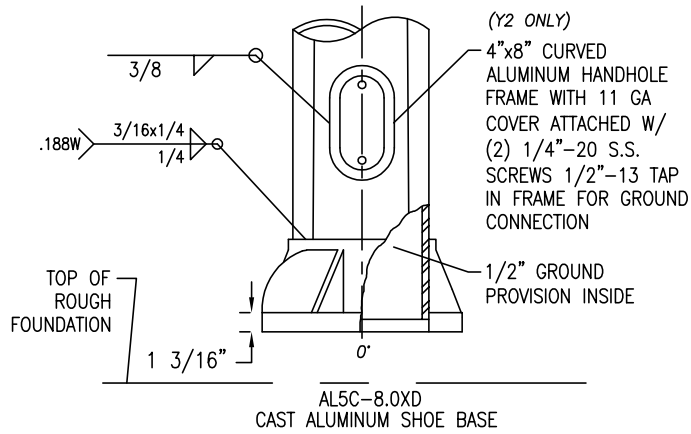


(1) 2 9/16" DIA HOLE IN POLE

2-BOLT SIMPLEX LUMINAIRE ARM CONNECTION DETAIL



REAR MOUNT LUMINAIRE ARM CONNECTION DETAIL



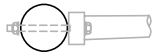
OCTAFLUTE ALUMINUM ROADWAY LIGHT POLE DETAILS

REVISION & DATE	



ARLINGTON COUNTY, VIRGINIA
DEPARTMENT OF ENVIRONMENTAL SERVICES

DRAWING NO.
14080-05



TOP VIEW

SLIP-ON
POLE CAP,
PAINTED TO
MATCH POLE

LUMINAIRE ARM
(SEPARATE PAY ITEM)

MOUNTING HEIGHT 25'
OR 30' (SPECIFIED
DURING ORDER)

4"X12"
HANDHOLE

12" FROM
FINISHED GRADE

24"

COMPACTED SOIL OR
UNDISTURBED GROUND

5'

2.375"
dia. cable
access hole
(2@180)

ROUND TAPERED COMPOSITE ROADWAY LIGHT POLE (DIRECT-BURIED)

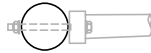
1 09/23

REVISION & DATE

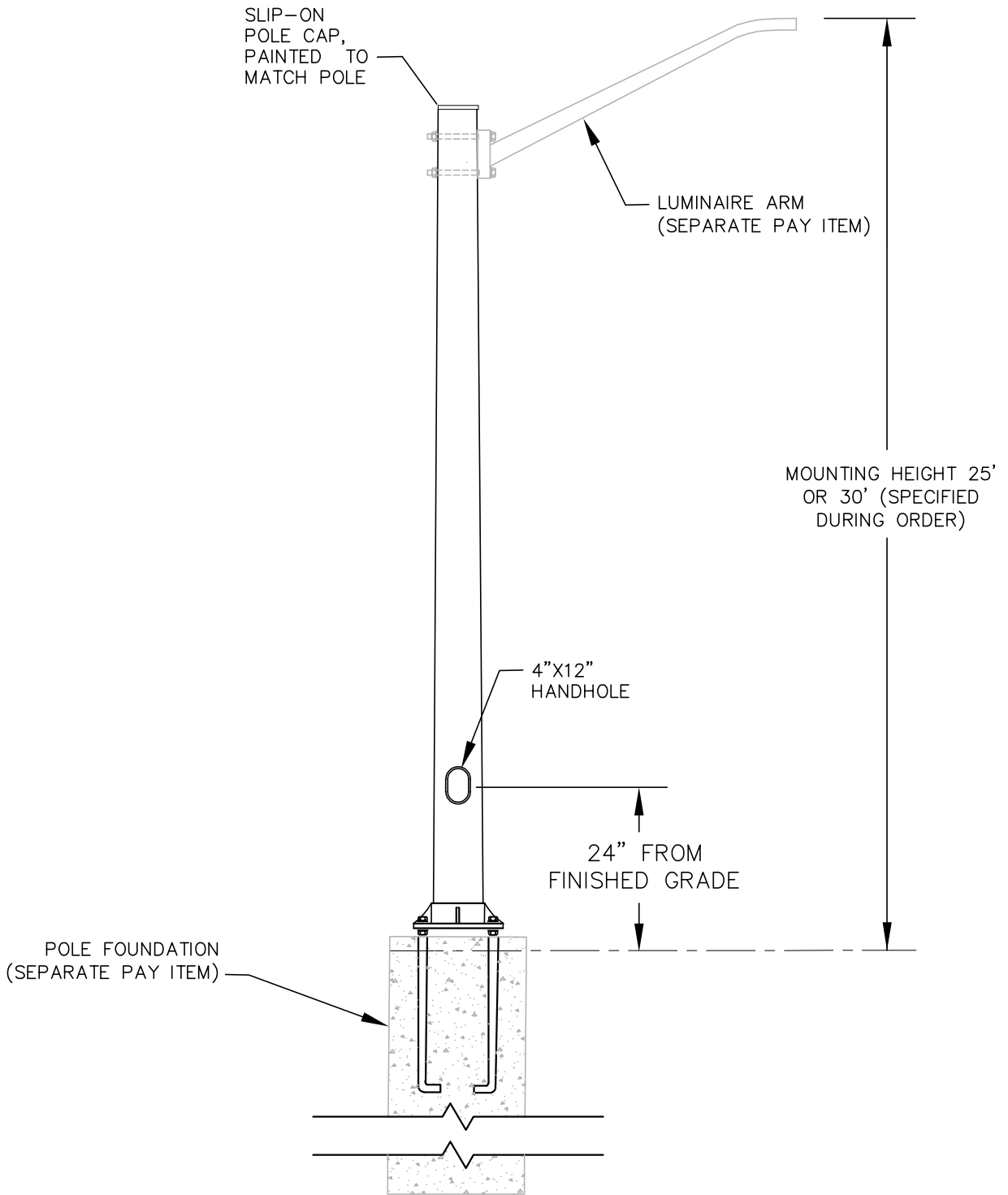


ARLINGTON COUNTY, VIRGINIA
DEPARTMENT OF ENVIRONMENTAL SERVICES

DRAWING NO.
14080-06



TOP VIEW



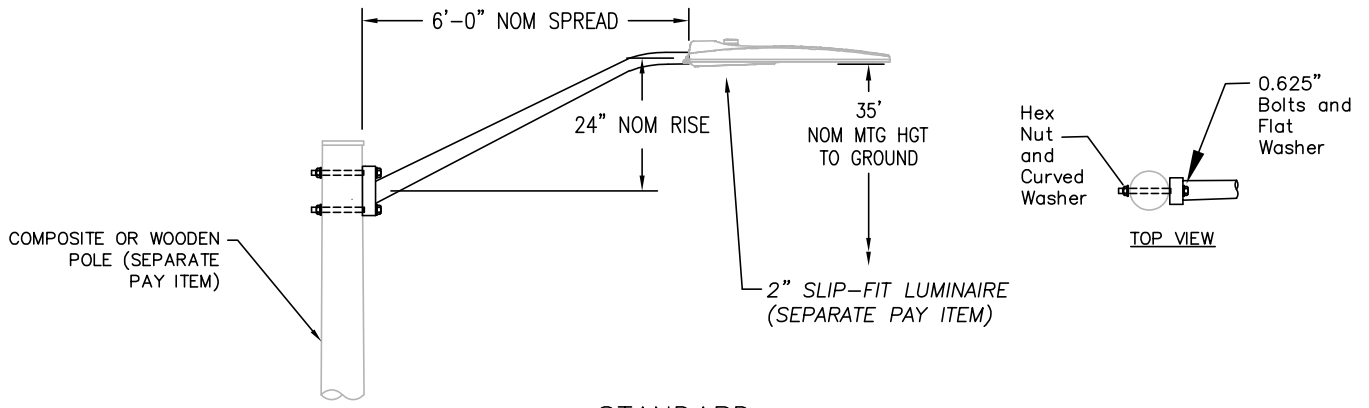
**ROUND TAPERED COMPOSITE ROADWAY
LIGHT POLE**

1	09/23
REVISION & DATE	

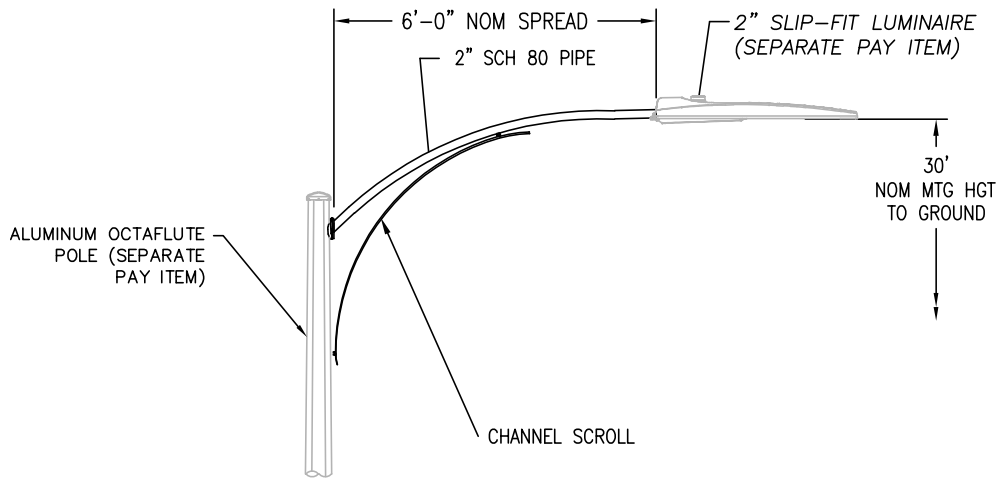


ARLINGTON COUNTY, VIRGINIA
DEPARTMENT OF ENVIRONMENTAL SERVICES

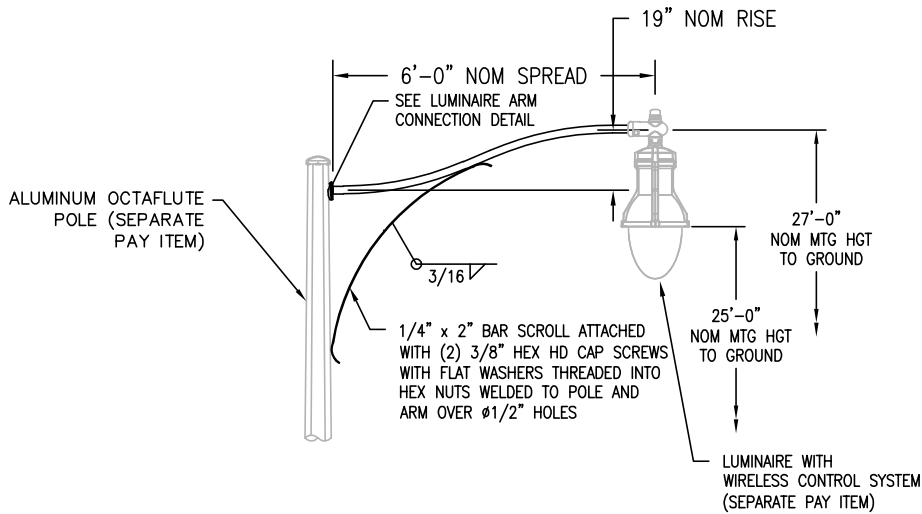
DRAWING NO.
14080-07



STANDARD



UPSWEEP



S-CURVE

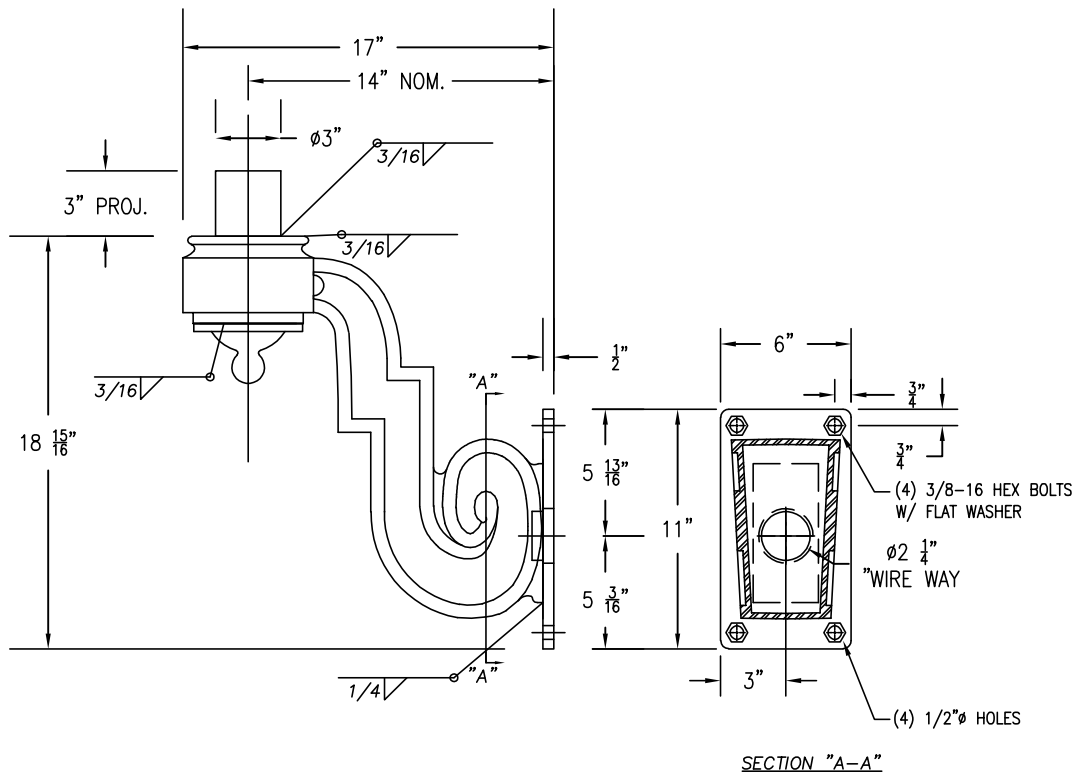
ROADWAY LUMINAIRE ARM TYPES

REVISION & DATE



ARLINGTON COUNTY, VIRGINIA
DEPARTMENT OF ENVIRONMENTAL SERVICES

DRAWING NO.
14090-01



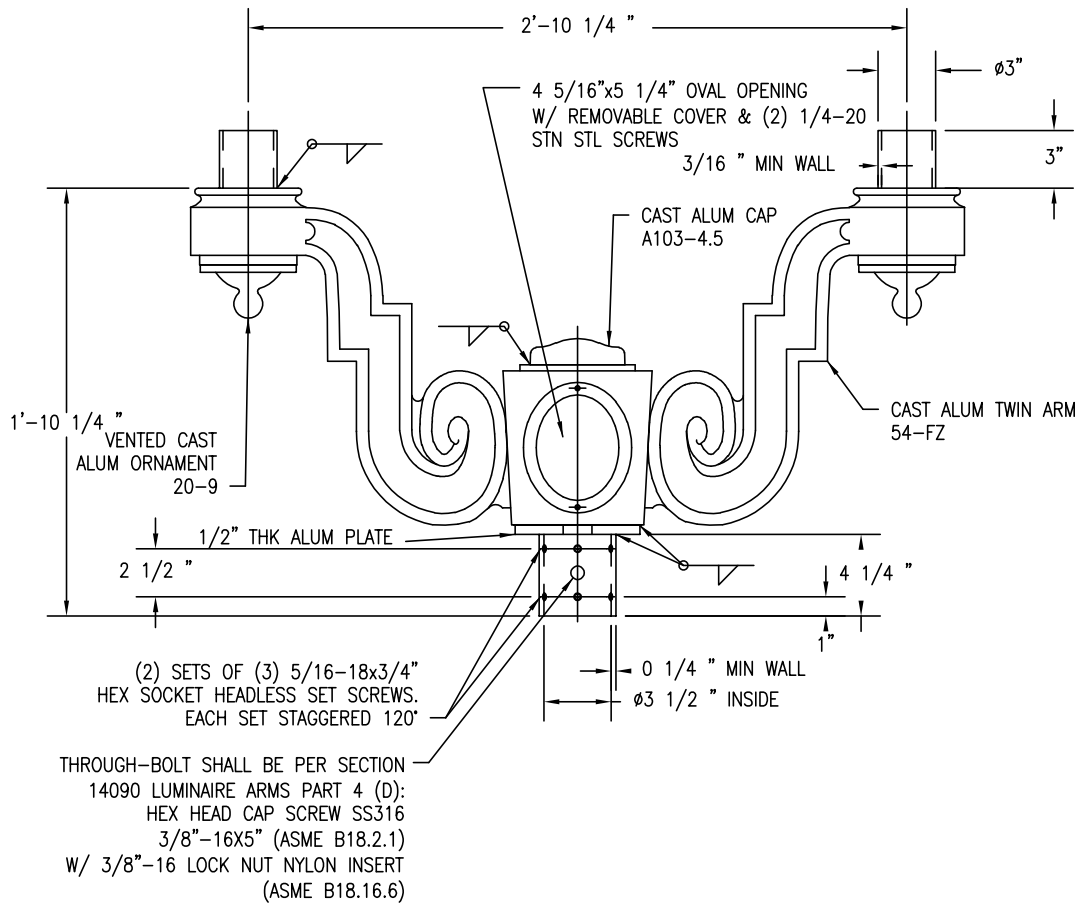
DECORATIVE SINGLE ARM FOR REAR
MOUNT OCTAFLUTE POLES

REVISION & DATE	



ARLINGTON COUNTY, VIRGINIA
DEPARTMENT OF ENVIRONMENTAL SERVICES

DRAWING NO.
14090-02



NOTES:
 1. WELDED ASSEMBLY HEAT TREATED TO -T6 TEMPER.

DECORATIVE POST-TOP DUAL ARM

1 09/23

REVISION & DATE



ARLINGTON COUNTY, VIRGINIA
 DEPARTMENT OF ENVIRONMENTAL SERVICES

DRAWING NO.
14090-03

**FOR MAINTENANCE
USE, ONLY**

SEE CENTRAL
STREETLIGHT CONTROL
CONFIGURATION
DETAIL

200 AMP
RINGLESS
METER SOCKET
(METER
SUPPLIED AND
INSTALLED BY
DE)

MIDWEST ELECTRIC
PRODUCTS INC.
MODEL R281C1P6H
METER PEDESTAL

COMPACTED SOIL OR
UNDISTURBED GROUND

JUNCTION BOX PER
14040-02

84"

4"

24"

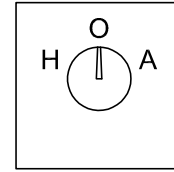
2" CONDUIT

CLAMP
(SEE INSET)

TO STREETLIGHTS

CLAMP
(SEE INSET)

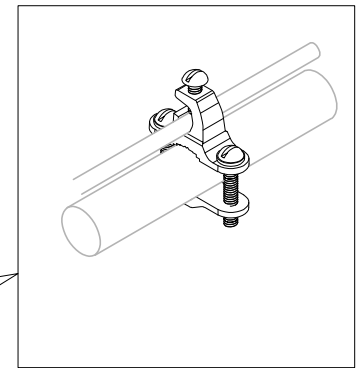
GROUND RODS
SEPARATED BY
6' MINIMUM



CONTACTOR



PHOTOCELL



CLAMP INSET
(EK16)

TO SERVICE
(MAINTAINED
BY DE)

NOTES:

1. RESISTANCE TEST SHALL BE CARRIED OUT BY THE LIGHTING CONTRACTOR DURING THE METER PEDESTAL INSTALLATION.
2. MAXIMUM RESISTANCE SHALL NOT EXCEED 25 OHMS.

ELECTRICAL SERVICE

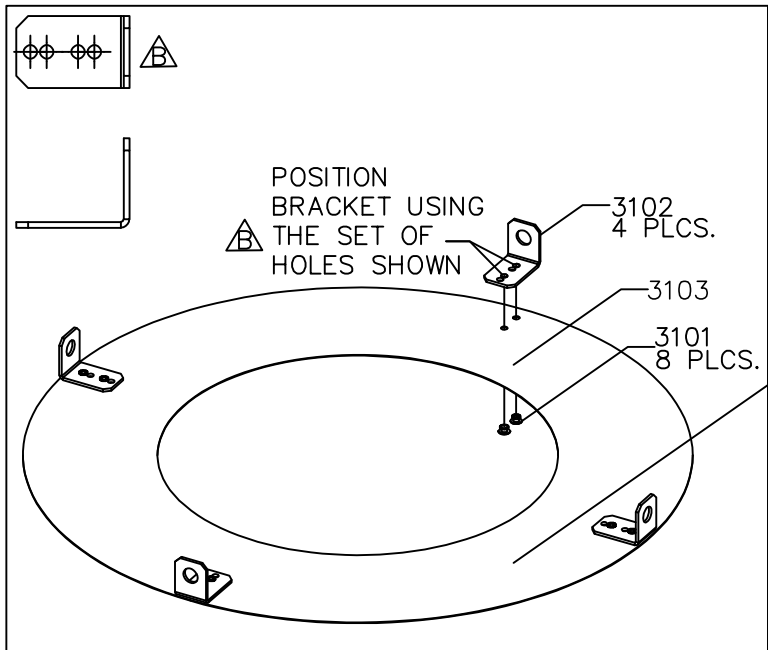
1 09/23

REVISION & DATE



ARLINGTON COUNTY, VIRGINIA
DEPARTMENT OF ENVIRONMENTAL SERVICES

DRAWING NO.
14100-01



- NOTE:
1. REFLECTIVE SURFACE (SIDE WITH PROTECTIVE COATING) OF 3103 MUST FACE AWAY FROM BRACKETS (3102).
 2. CONTRACTOR SHALL ENSURE CORRECT ORIENTATION OF THE GLOBE DURING INSTALLATION. THE STREET SIDE WILL HAVE A DIFFERENT PRISM THAN THE SIDEWALK/HOUSE SIDE.

NON-REFLECTIVE SIDE SEE NOTE 1

REFRACTOR GLOBE: PRISMATIC ACRYLIC, TYPE V OPTICS

DRIVER COVER: DIE-CAST ALUMINUM W/ TOOL-LESS ENTRY

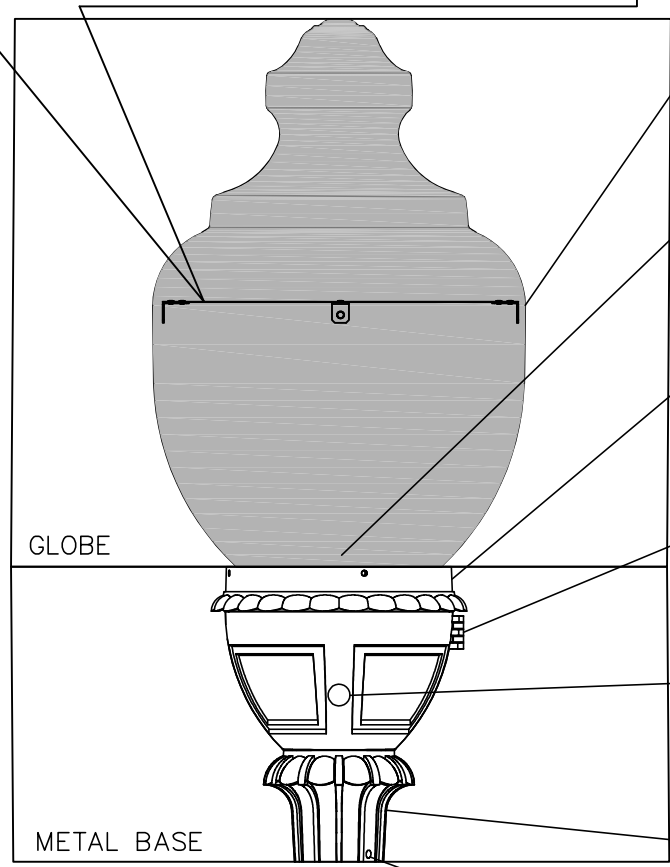
GLOBE HOLDER: DIE-CAST ALUMINUM W/ TWIST-LOCK RING

DRIVER ENCLOSURE: DIE-CAST ALUMINUM, WEATHERPROOF W/ TOOL-LESS ENTRY (ACCESS DOOR TO BE ON THE TRAFFIC SIDE OF POLE)

PHOTO CONTROL: TWIST-LOCK RECEPTACLE

SLIP FITTER: 3" I.D.

FASTENERS: STAINLESS STEEL HEX HEAD BOLTS



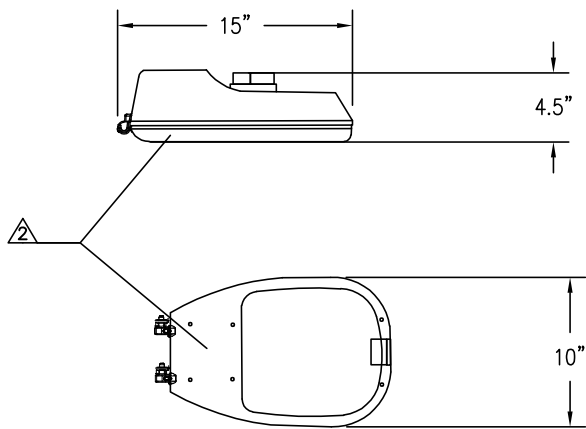
DECORATIVE POST-TOP LUMINAIRE

REVISION & DATE	

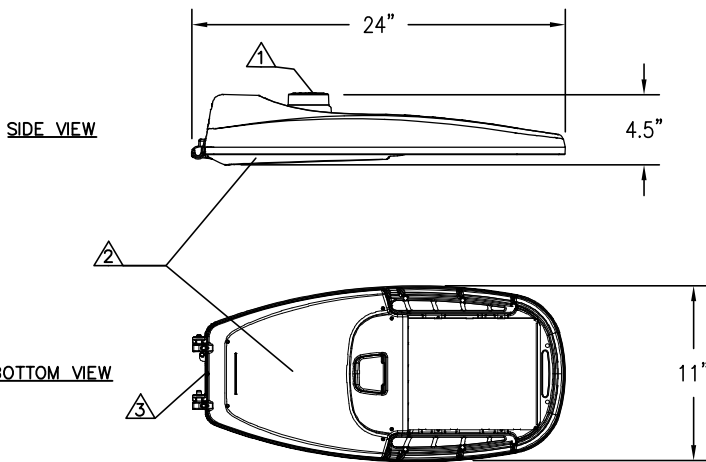


ARLINGTON COUNTY, VIRGINIA
DEPARTMENT OF ENVIRONMENTAL SERVICES

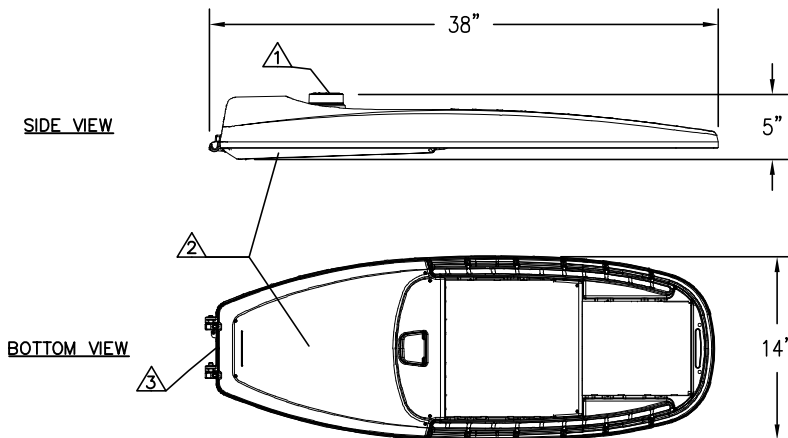
DRAWING NO.
14110-01



SMALL COBRA HEAD LUMINAIRE



MEDIUM COBRA HEAD LUMINAIRE






LARGE COBRA HEAD LUMINAIRE

NOTE:

1. DIMENSIONS ARE NOMINAL.
2. LUMINAIRE COLOR BLACK OR GREY (SPECIFIED DURING DESIGN/ORDER).

LEGEND:

-  7-PIN TWIST-LOCK ANSI 136.41 RECEPTACLE
-  TOOL-LESS ENTRY DOOR SECURED TO PREVENT ACCIDENTAL DISENGAGEMENT
-  MUST FIT ON A 2" OUTER DIAMETER AND A MINIMUM 4" LONG LUMINAIRE ARM TENON

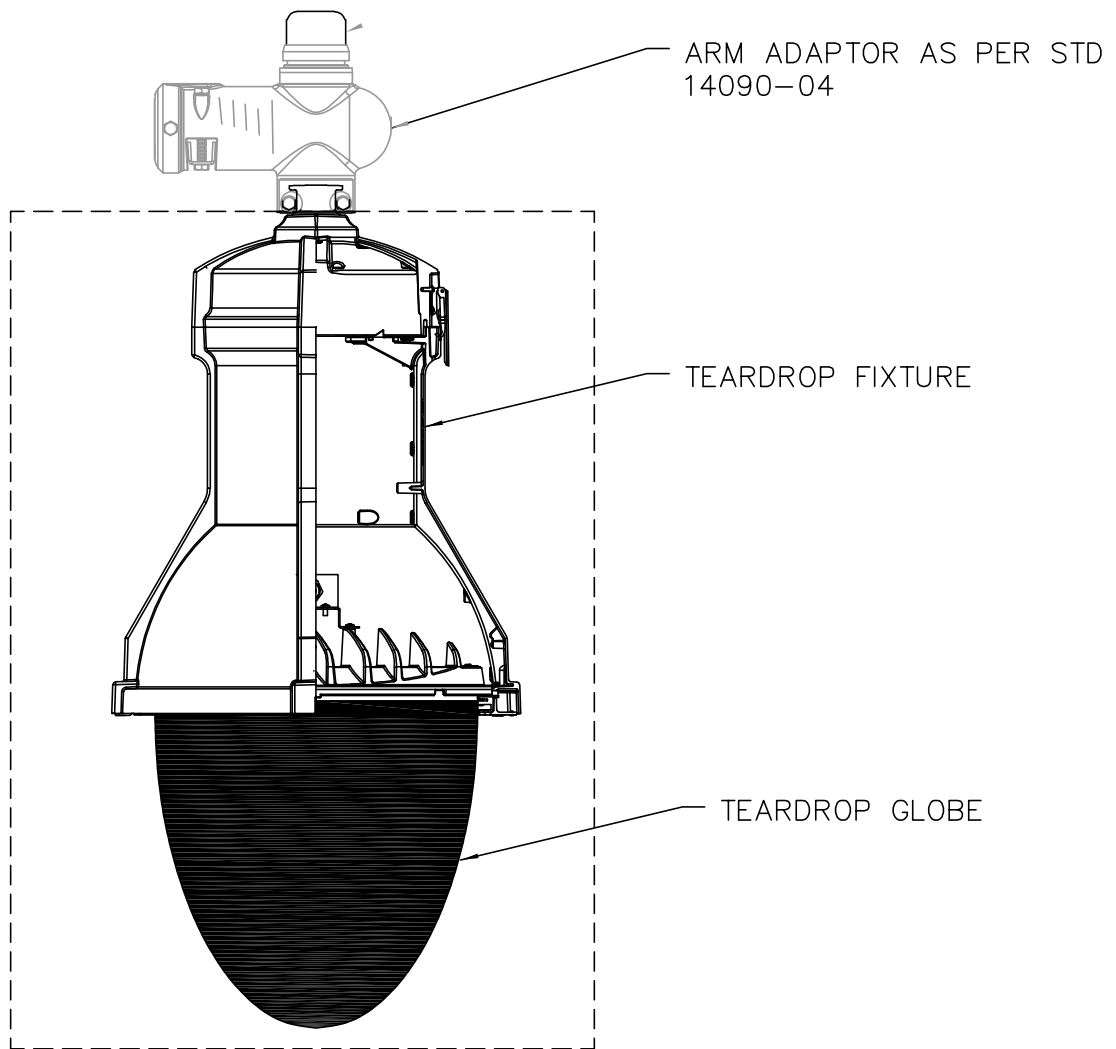
COBRA HEAD LED LUMINAIRE

1	09/23
REVISION & DATE	



ARLINGTON COUNTY, VIRGINIA
DEPARTMENT OF ENVIRONMENTAL SERVICES

DRAWING NO.
14110-03



NOTES:

1. THE LUMINAIRE TOP SHALL BE CAST-NECK TYPE.
2. THE CONTRACTOR SHALL MAKE THE CONNECTION USING THE DISCONNECT SUPPLIED AS PART OF THE ARM ADAPTOR.
3. THE CONTRACTOR SHALL ENSURE CORRECT LUMINAIRE ORIENTATION DURING INSTALLATION.

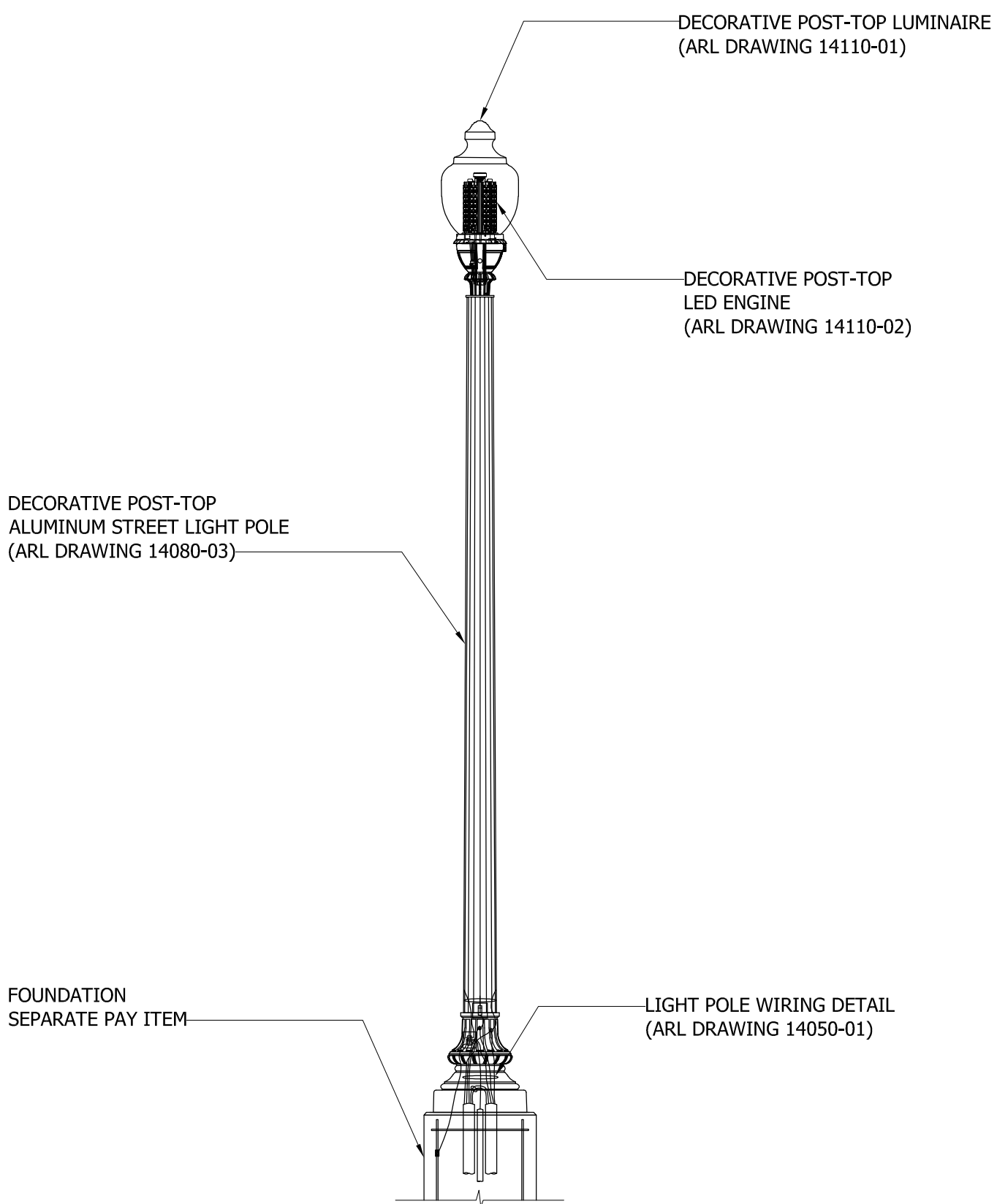
TEARDROP LUMINAIRE

REVISION & DATE	



ARLINGTON COUNTY, VIRGINIA
DEPARTMENT OF ENVIRONMENTAL SERVICES

DRAWING NO.
14110-04



**DECORATIVE POST-TOP ALUMINUM STREETLIGHT POLE
WITH SINGLE POST-TOP LUMINAIRE**

REVISION & DATE	



ARLINGTON COUNTY, VIRGINIA
DEPARTMENT OF ENVIRONMENTAL SERVICES

DRAWING NO.
14112-01

DECORATIVE POST-TOP
LED ENGINE
(ARL DRAWING 14110-02)

DECORATIVE POST-TOP LUMINAIRE
(ARL DRAWING 14110-01)

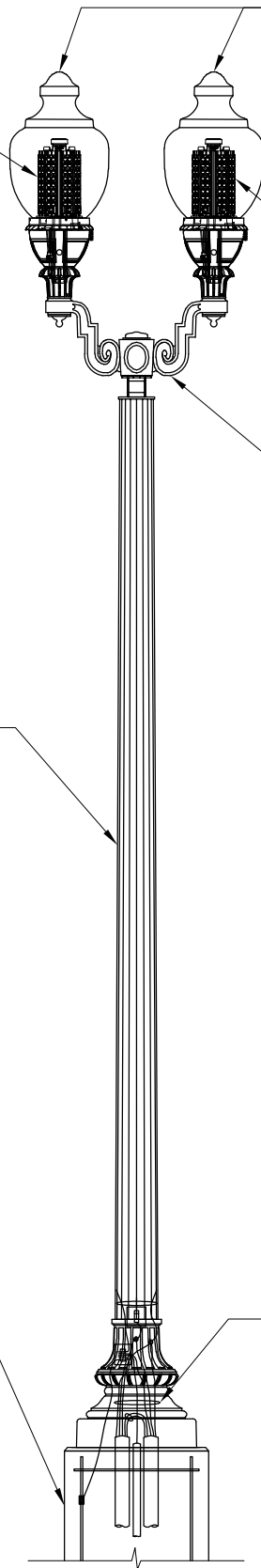
DECORATIVE POST-TOP
LED ENGINE
(ARL DRAWING 14110-02)

DECORATIVE POST-TOP
DUAL ARM
(ARL DRAWING 14090-03)

DECORATIVE POST-TOP
ALUMINUM STREET LIGHT POLE
(ARL DRAWING 14080-03)

FOUNDATION
SEPARATE PAY ITEM

LIGHT POLE WIRING DETAIL
(ARL DRAWING 14050-01)



**DECORATIVE POST-TOP ALUMINUM STREETLIGHT POLE
WITH DOUBLE POST-TOP LUMINAIRES**

REVISION & DATE



ARLINGTON COUNTY, VIRGINIA
DEPARTMENT OF ENVIRONMENTAL SERVICES

DRAWING NO.
14112-02

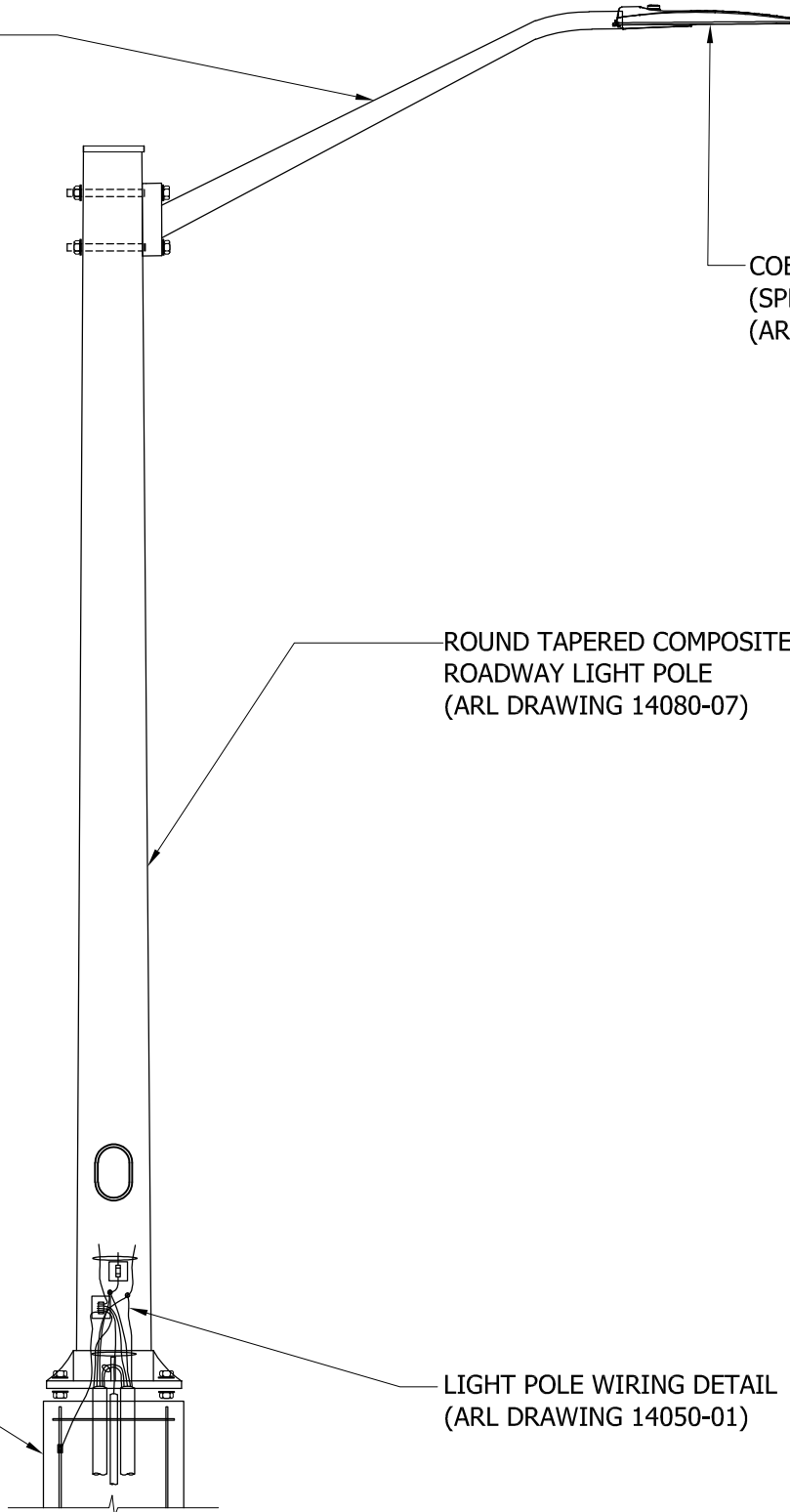
ROADWAY LUMINAIRE ARM
(GENERALLY STANDARD TYPE)
(ARL DRAWING 14090-01)

COBRA HEAD LUMINAIRE
(SPECIFY TYPE)
(ARL DRAWING 14110-03)

ROUND TAPERED COMPOSITE
ROADWAY LIGHT POLE
(ARL DRAWING 14080-07)

FOUNDATION
SEPARATE PAY ITEM

LIGHT POLE WIRING DETAIL
(ARL DRAWING 14050-01)



**ROUND TAPERED COMPOSITE ROADWAY LIGHT POLE ON
FOUNDATION WITH SINGLE COBRA HEAD LUMINAIRE**

REVISION & DATE



ARLINGTON COUNTY, VIRGINIA
DEPARTMENT OF ENVIRONMENTAL SERVICES

**DRAWING NO.
14112-03**

ROADWAY LUMINAIRE ARM
(GENERALLY STANDARD TYPE)
(ARL DRAWING 14090-01)

COBRA HEAD LUMINAIRE
(SPECIFY TYPE)
(ARL DRAWING 14110-03)

COBRA HEAD LUMINAIRE
(SPECIFY TYPE)
(ARL DRAWING 14110-03)

ROUND TAPERED COMPOSITE
ROADWAY LIGHT POLE
(ARL DRAWING 14080-07)

FOUNDATION
SEPARATE PAY ITEM

LIGHT POLE WIRING DETAIL
(ARL DRAWING 14050-01)

**ROUND TAPERED COMPOSITE ROADWAY LIGHT POLE ON
FOUNDATION WITH DOUBLE COBRA HEAD LUMINAIRES**

REVISION & DATE



ARLINGTON COUNTY, VIRGINIA
DEPARTMENT OF ENVIRONMENTAL SERVICES

DRAWING NO.
14112-04

ROADWAY LUMINAIRE ARM
 (UPSWEEP (SHOWN) OR S-CURVE)
 (ARL DRAWING 14090-01)

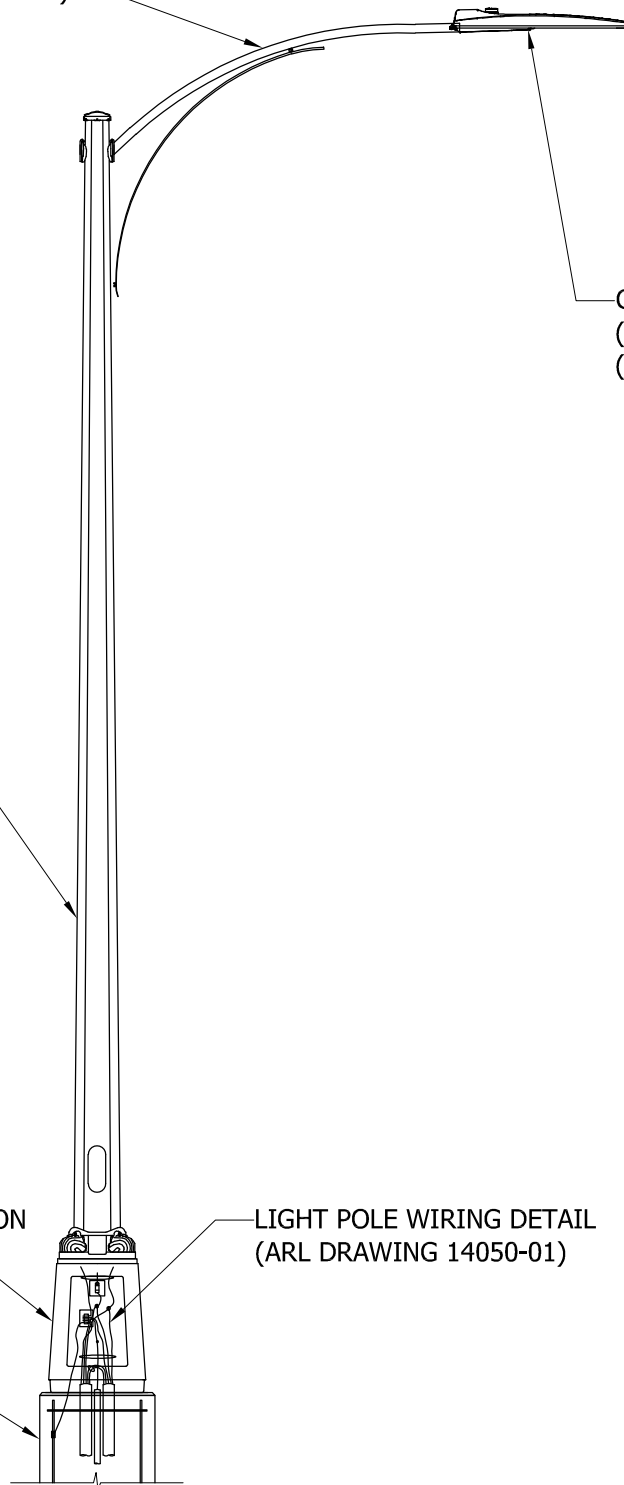
COBRA HEAD LUMINAIRE
 (SPECIFY TYPE)
 (ARL DRAWING 14110-03)

OCTAFLUTE ALUMINUM
 ROADWAY LIGHT POLE
 (ARL DRAWING 14080-04 (a))

CAST ALUMINUM BREAKAWAY
 TRANSFORMER BASE DETAIL
 (17" BASE) HINGED DOOR OPTION
 (ARL DRAWING 14070-01)

LIGHT POLE WIRING DETAIL
 (ARL DRAWING 14050-01)

FOUNDATION
 SEPARATE PAY ITEM



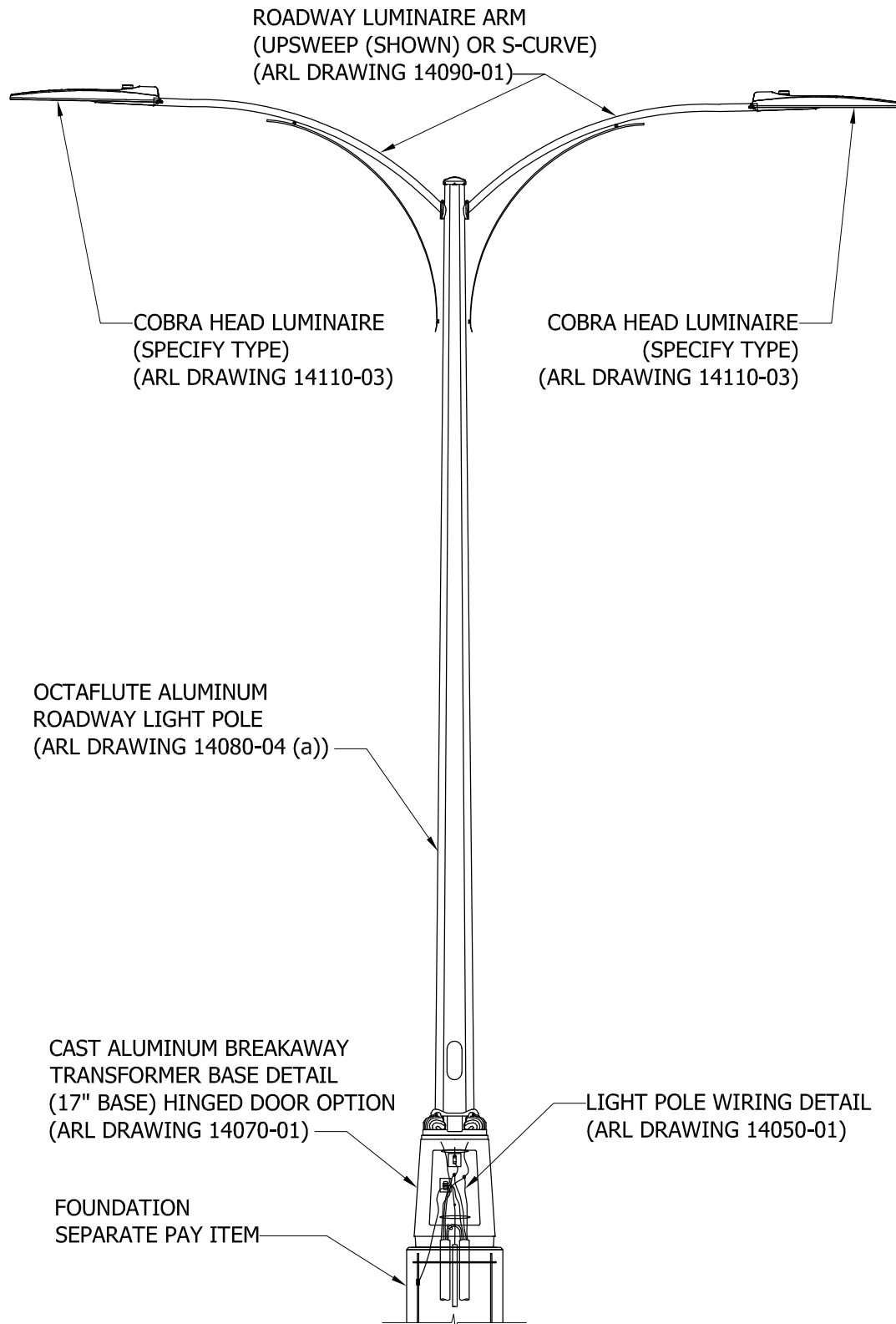
**OCTAFLUTE ALUMINUM ROADWAY LIGHT POLE
 WITH SINGLE COBRA HEAD LUMINAIRE**

REVISION & DATE



ARLINGTON COUNTY, VIRGINIA
 DEPARTMENT OF ENVIRONMENTAL SERVICES

DRAWING NO.
 14112-05



**OCTAFLUTE ALUMINUM ROADWAY LIGHT POLE
WITH DOUBLE COBRA HEAD LUMINAIRES**

REVISION & DATE	



ARLINGTON COUNTY, VIRGINIA
DEPARTMENT OF ENVIRONMENTAL SERVICES

DRAWING NO.
14112-06

ROADWAY LUMINAIRE ARM (S-CURVE)
(ARL DRAWING 14090-01)

ARM ADAPTOR FOR TEARDROP
(ARL DRAWING 14090-04)

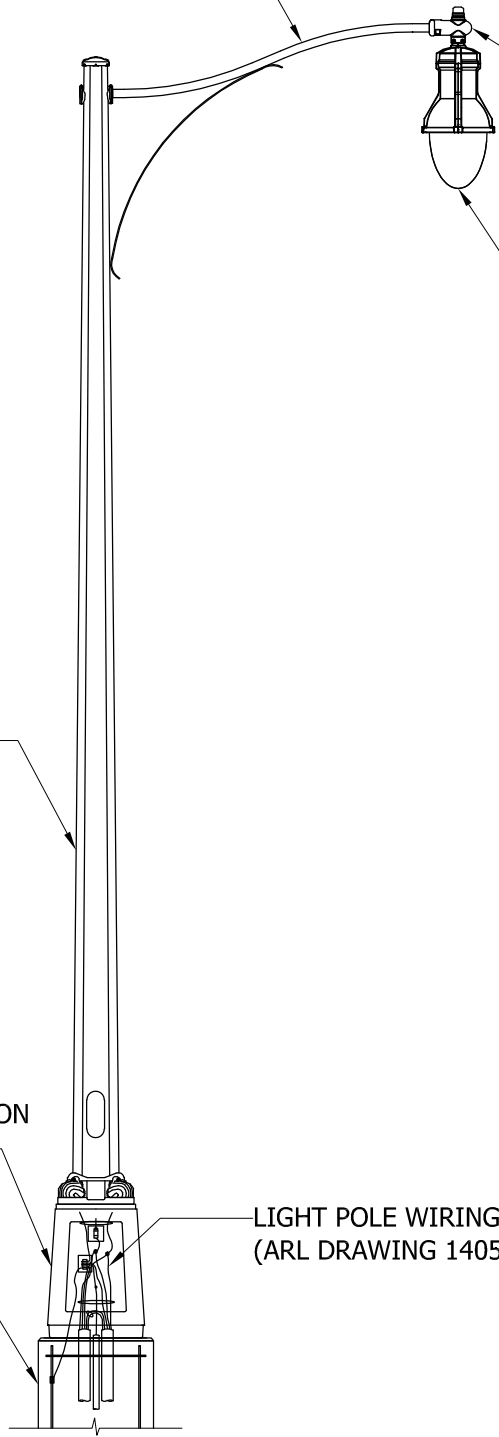
LUMINAIRE PER SPEC
SECTION 114110.04

OCTAFLUTE ALUMINUM
ROADWAY LIGHT POLE
(ARL DRAWING 14080-04 (a))

CAST ALUMINUM BREAKAWAY
TRANSFORMER BASE DETAIL
(17" BASE) HINGED DOOR OPTION
(ARL DRAWING 14070-01)

LIGHT POLE WIRING DETAIL
(ARL DRAWING 14050-01)

FOUNDATION
SEPARATE PAY ITEM



OCTAFLUTE ALUMINUM ROADWAY LIGHT POLE
WITH SINGLE TEARDROP LUMINAIRE

REVISION & DATE	



ARLINGTON COUNTY, VIRGINIA
DEPARTMENT OF ENVIRONMENTAL SERVICES

DRAWING NO.
14112-07

ROADWAY LUMINAIRE ARM (S-CURVE)
(ARL DRAWING 14090-01)

ARM ADAPTOR
FOR TEARDROP
(ARL DRAWING
14090-04)

ARM ADAPTOR
FOR TEARDROP
(ARL DRAWING
14090-04)

LUMINAIRE PER SPEC
SECTION 114110.04

LUMINAIRE PER SPEC
SECTION 114110.04

OCTAFLUTE ALUMINUM
ROADWAY LIGHT POLE
(ARL DRAWING 14080-04 (a))

CAST ALUMINUM BREAKAWAY
TRANSFORMER BASE DETAIL
(17" BASE) HINGED DOOR OPTION
(ARL DRAWING 14070-01)

LIGHT POLE WIRING DETAIL
(ARL DRAWING 14050-01)

FOUNDATION
SEPARATE PAY ITEM

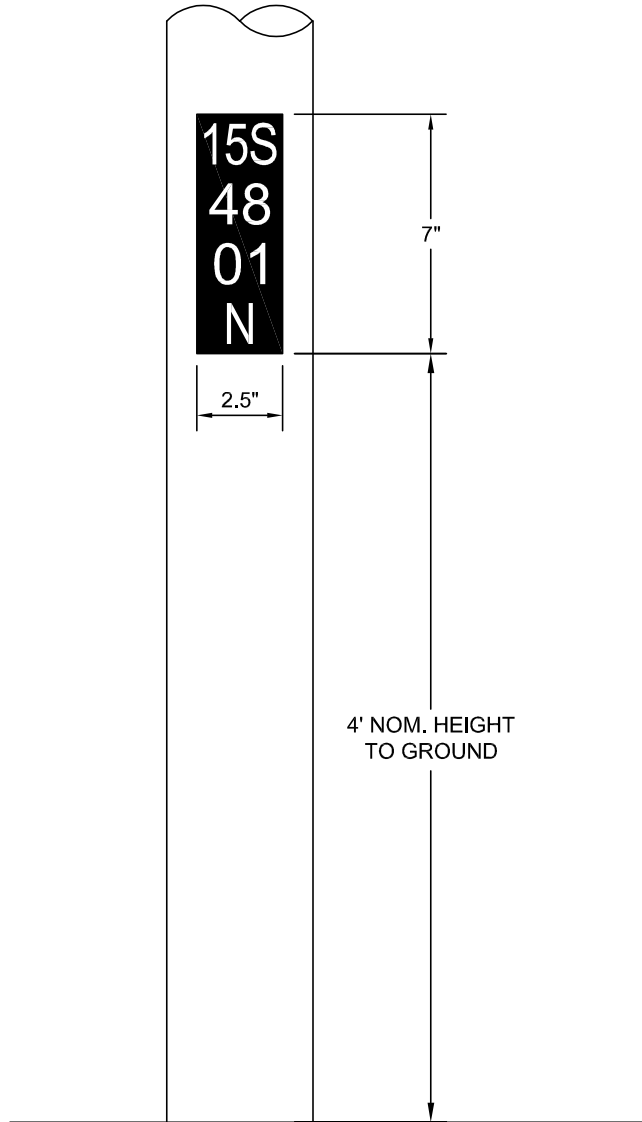
OCTAFLUTE ALUMINUM ROADWAY LIGHT POLE
WITH DOBLE TEARDROP LUMINAIRES

REVISION & DATE




ARLINGTON COUNTY, VIRGINIA
DEPARTMENT OF ENVIRONMENTAL SERVICES

DRAWING NO.
14112-08



NOTES:

1. ASTM TYPE I ENGINEER GRADE REFLECTIVE SHEETING
2. BLACK (NON-REFLECTIVE) BACKGROUND WITH YELLOW (REFLECTIVE) TEXT
3. TOP OF LINE LETTERS: HIGHWAY "C" FONT. NUMBERS AND CARDINAL DIRECTION: HIGHWAY "D" FONT.
4. DECALS SHALL BE PLACED ON THE STREET SIDE OF THE POLE AT APPROXIMATELY 45° FROM THE DIRECTION OF TRAVEL.
5. THE POLE NUMBERING PROTOCOL DOCUMENT CAN BE LOCATED HERE:
<https://www.arlingtonva.us/Government/Programs/Transportation/Streets/Streetlights/Streetlight-Pole-Identification-Protocol>

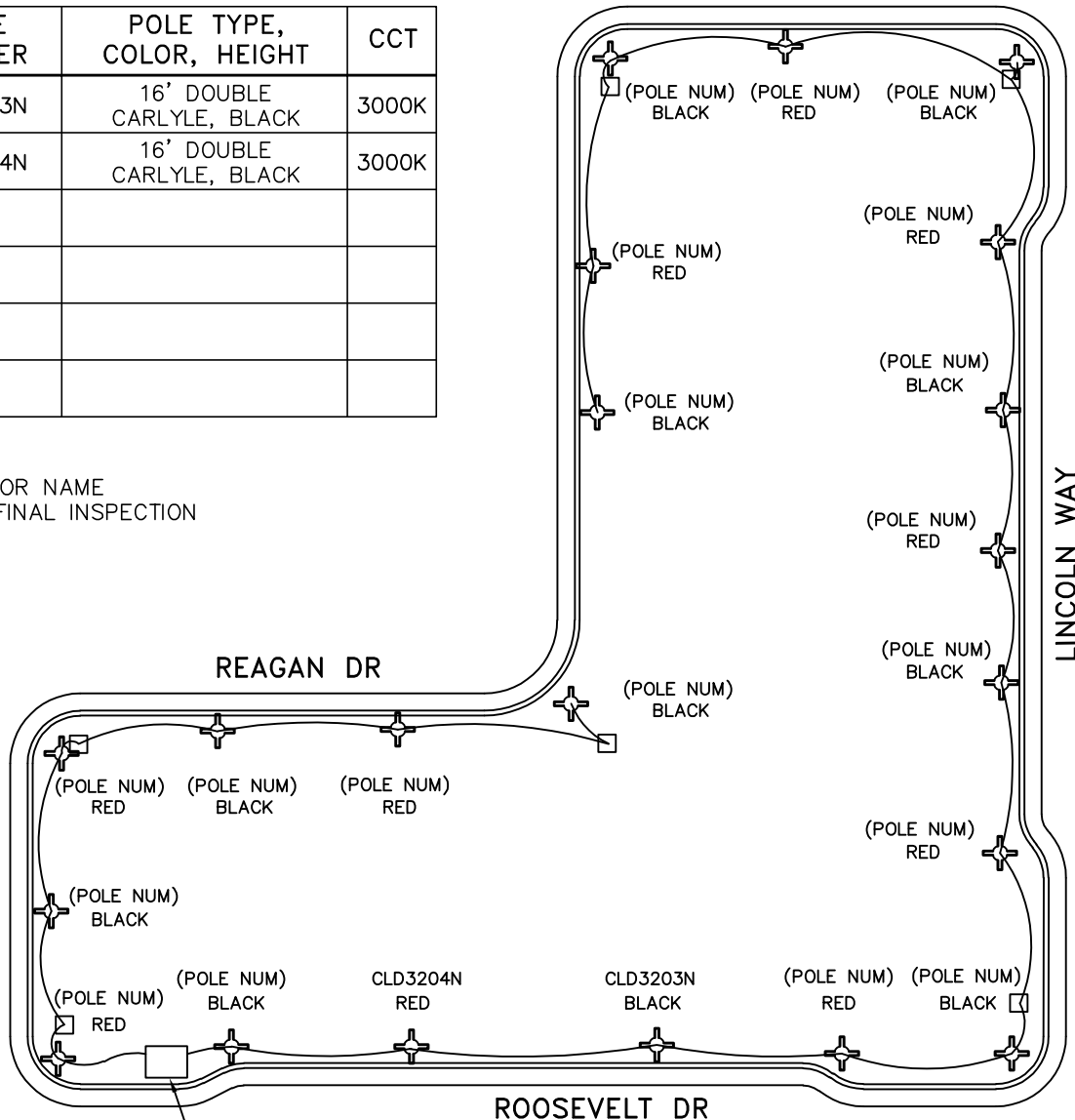
POLE DECALS	1	09/23
	REVISION & DATE	
 ARLINGTON VIRGINIA	ARLINGTON COUNTY, VIRGINIA DEPARTMENT OF ENVIRONMENTAL SERVICES	
		DRAWING NO. 14120-01

STREETLIGHT POLE AND FIXTURE SCHEDULE

POLE NUMBER	POLE TYPE, COLOR, HEIGHT	CCT
CLD3203N	16' DOUBLE CARLYLE, BLACK	3000K
CLD3204N	16' DOUBLE CARLYLE, BLACK	3000K






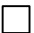
NIXON WAY

CONTRACTOR NAME
DATE OF FINAL INSPECTION



METER PEDESTAL
CIRCUIT BREAKER SIZE
WIRE SIZE
METER NUMBER

LEGEND

-  STREETLIGHT
-  POLE NUMBER
-  RED
-  CIRCUIT COLOR CODE
-  CONDUIT RUN
-  JUNCTION BOX

SKELETON OUTLINE OF STREET LIGHT CIRCUITS SHOULD BE DEVOID OF ALL OTHER INFRASTRUCTURE AND SHOULD ONLY SHOW BASIC STREET GEOMETRY.

*NOT TO SCALE

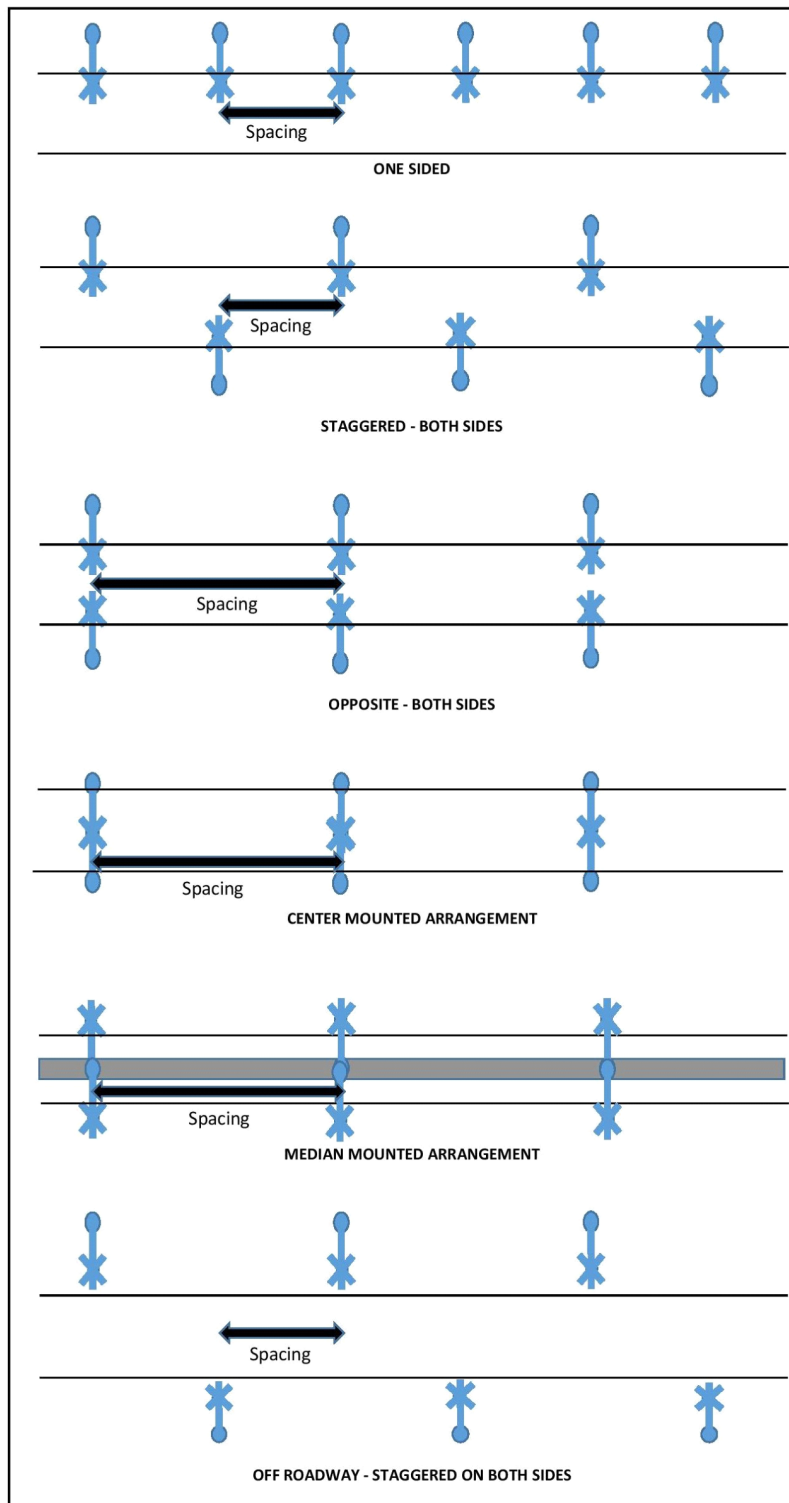
AS-BUILT DRAWING (TYPICAL)

REVISION & DATE



ARLINGTON COUNTY, VIRGINIA
DEPARTMENT OF ENVIRONMENTAL SERVICES

DRAWING NO.
14130-01



TYPICAL POLE CONFIGURATIONS

REVISION & DATE	



ARLINGTON COUNTY, VIRGINIA
DEPARTMENT OF ENVIRONMENTAL SERVICES

DRAWING NO.
14140-02

FOR COUNTY-OWNED STREETLIGHTS

POLE ID	POLE						ARM			LUMINAIRE				
	TYPE	HEIGHT (ft)	MATERIAL	COLOR	POLE STD #	FOUNDATION STD #	TYPE	LENGTH	STD #	TYPE	CCT	DISTRIBUTION TYPE	WATTS	STD #
CRD1502S	CARLYLE	16	ALUM.	BLK	14080-03	14060-01	DUAL	1.5	14090-03	CARLYLE	4000K	V	69	14110-01
CRD1504S	CARLYLE	16	ALUM.	BLK	14080-03	14060-02	DUAL	1.5	14090-03	CARLYLE	4000K	V	69	14110-01

RED TEXT INDICATES EXAMPLE DATA

FOR DOMINION-OWNED STREETLIGHTS

POLE					ARM			LUMINAIRE		
TYPE	ARM MOUNTING HEIGHT (ft)	MATERIAL	COLOR	STOCK #	TYPE	LENGTH (ft)	STOCK #	TYPE	WATTS	STOCK #
COBRA	23	COMPOSITE	GRY	50502000	UPSWEEP	6	42021269	COBRA	41	42323686
COBRA	23	COMPOSITE	GRY	50502000	UPSWEEP	8	42021270	COBRA	41	42323686

RED TEXT INDICATES EXAMPLE DATA

JUNCTION BOX SCHEDULE

JUNCTION BOX TYPE	STANDARD #	QUANTITY

LIGHTING EQUIPMENT SCHEDULES

1 09/23

REVISION & DATE



ARLINGTON COUNTY, VIRGINIA
DEPARTMENT OF ENVIRONMENTAL SERVICES

DRAWING NO.
14140-03