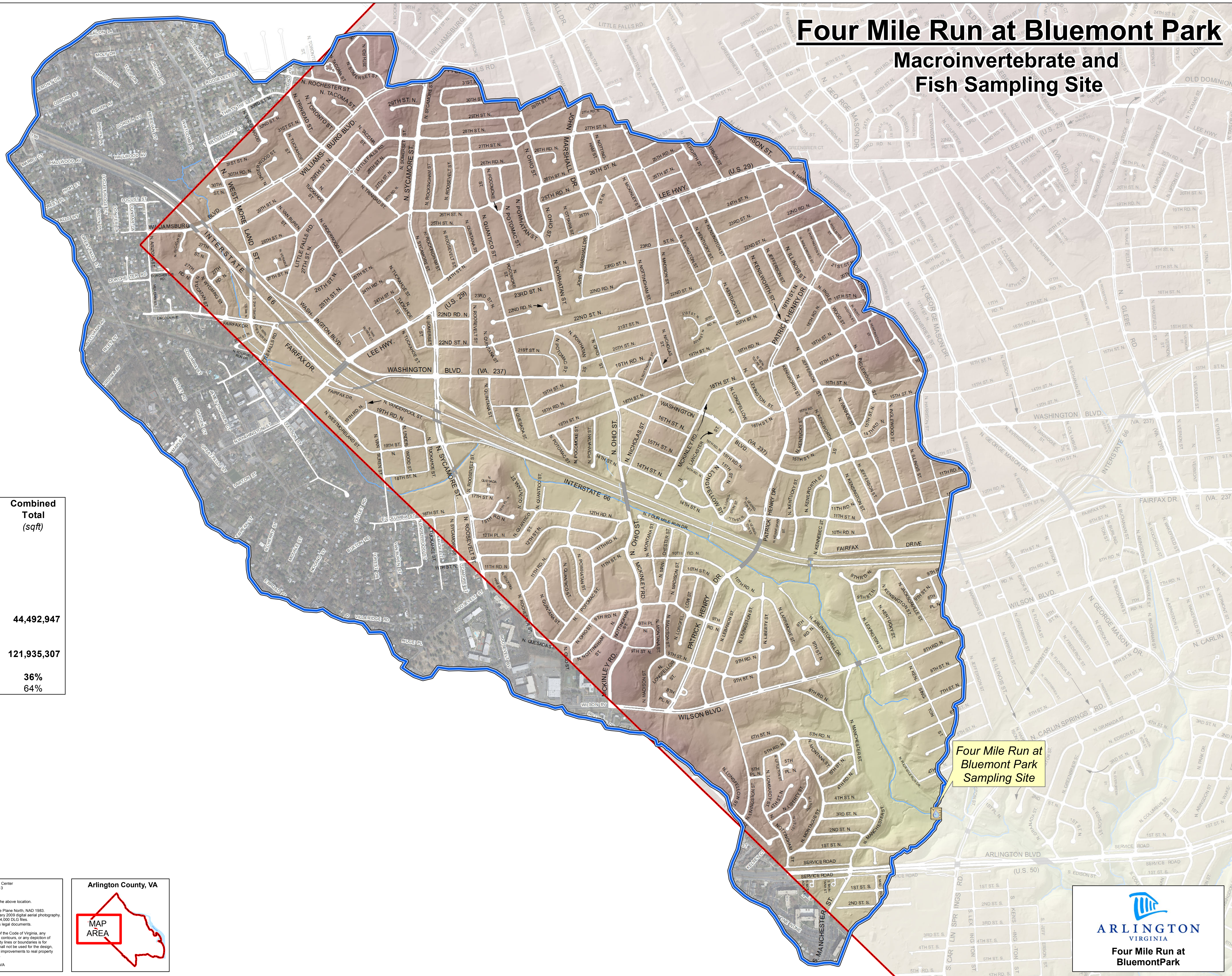


Four Mile Run at Bluemont Park

Macroinvertebrate and Fish Sampling Site



	Arlington County (sqft)	Fairfax County & City of Falls Church (sqft)	Combined Total (sqft)
Impervious Surface			
Building	11,279,825	-	
Alley	89,134	-	
Driveway	3,952,807	-	
Parking	2,445,723	-	
Road	14,191,209	-	
Sidewalk	2,633,791	-	
Paved Median	65,261	-	
Total Impervious	34,657,750	9,835,197	44,492,947
FMR, Bluemont Subwatershed	91,824,883	30,110,424	121,935,307
% Impervious	38%	33%	36%
% Non-Impervious	62%	67%	64%

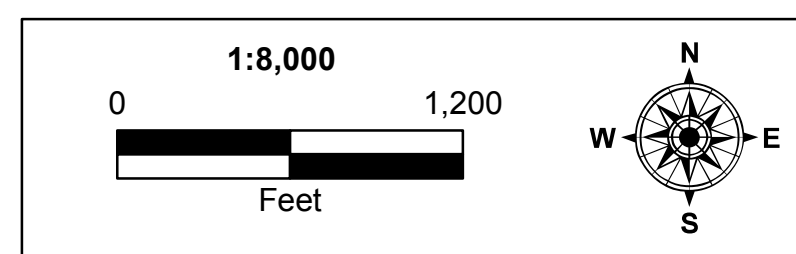
Legend

Sampling Sites
 Macroinvertebrate and Fish

Upstream Subwatershed
 Shed

Streams and Culverts
 Culvert
 Stream

County Line

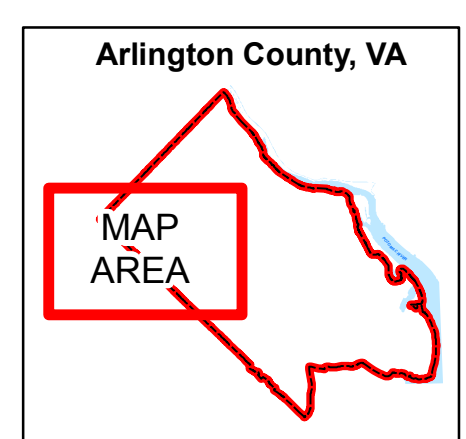


Map prepared by GIS Mapping Center
 2100 Clarendon Blvd., Suite 813
 Arlington, VA 22201
 Email: gisarc@arlingtonva.us
 Maps are available for sale at the above location.

Spatial reference: Virginia State Plane North, NAD 1983.
 Base map updated from February 2009 digital aerial photography.
 Potomac River from USGS 1:24,000 DLG files.
 Maps shall not be construed as legal documents.

Pursuant to Section 54.1-402 of the Code of Virginia, any determination of topography or contours, or any depiction of physical improvements, property lines or boundaries is for general information only and shall not be used for the design, modification, or construction of improvements to real property or for flood plain determination.

Map © 2012 Arlington County, VA
 Printed: January 2012



ARLINGTON VIRGINIA
 Four Mile Run at Bluemont Park