

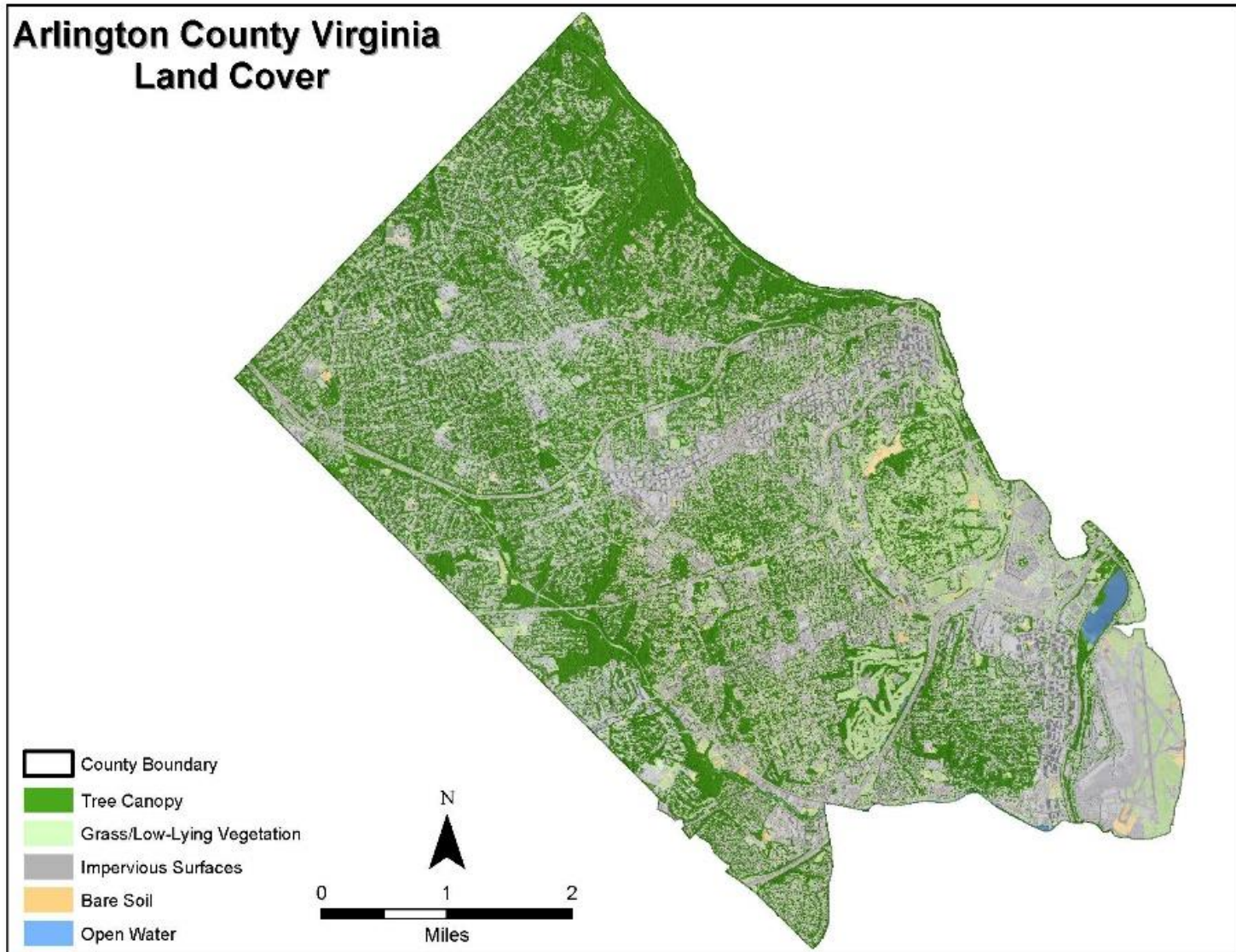
2017 Urban Tree Canopy Study

Department of Parks and Recreation

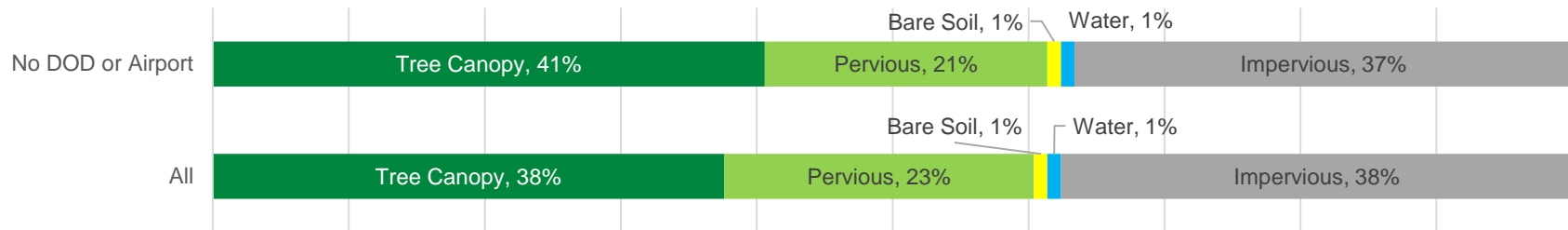
January 25, 2018

- **Study purpose**
 - Provide base-line data to measure ecological, social, and economic benefits that tree canopy provides Arlington.
 - Data will help to focus tree planting, tree preservation, and outreach activities related to promoting Arlington's tree canopy.
 - Compare data of previous studies for increase/decrease in canopy.
- **Study completed in December 2017**
 - Previous studies completed in 2008 and 2011
- **Strong public support for Arlington's tree canopy.**
- **Board direction for FY18 budget (March 2017)**

- Land cover analysis conducted for the entirety of Arlington County, including federal land.
- Study focused on tree canopy, which is the layer of leaves, branches, and stems of trees that cover the ground when viewed from above.
- Study used publicly available 2016 USDA National Agriculture Imagery Program data.
- Study used remote sensing and GIS software to calculate tree canopy at 1 meter resolution.



Results using 2016 data:

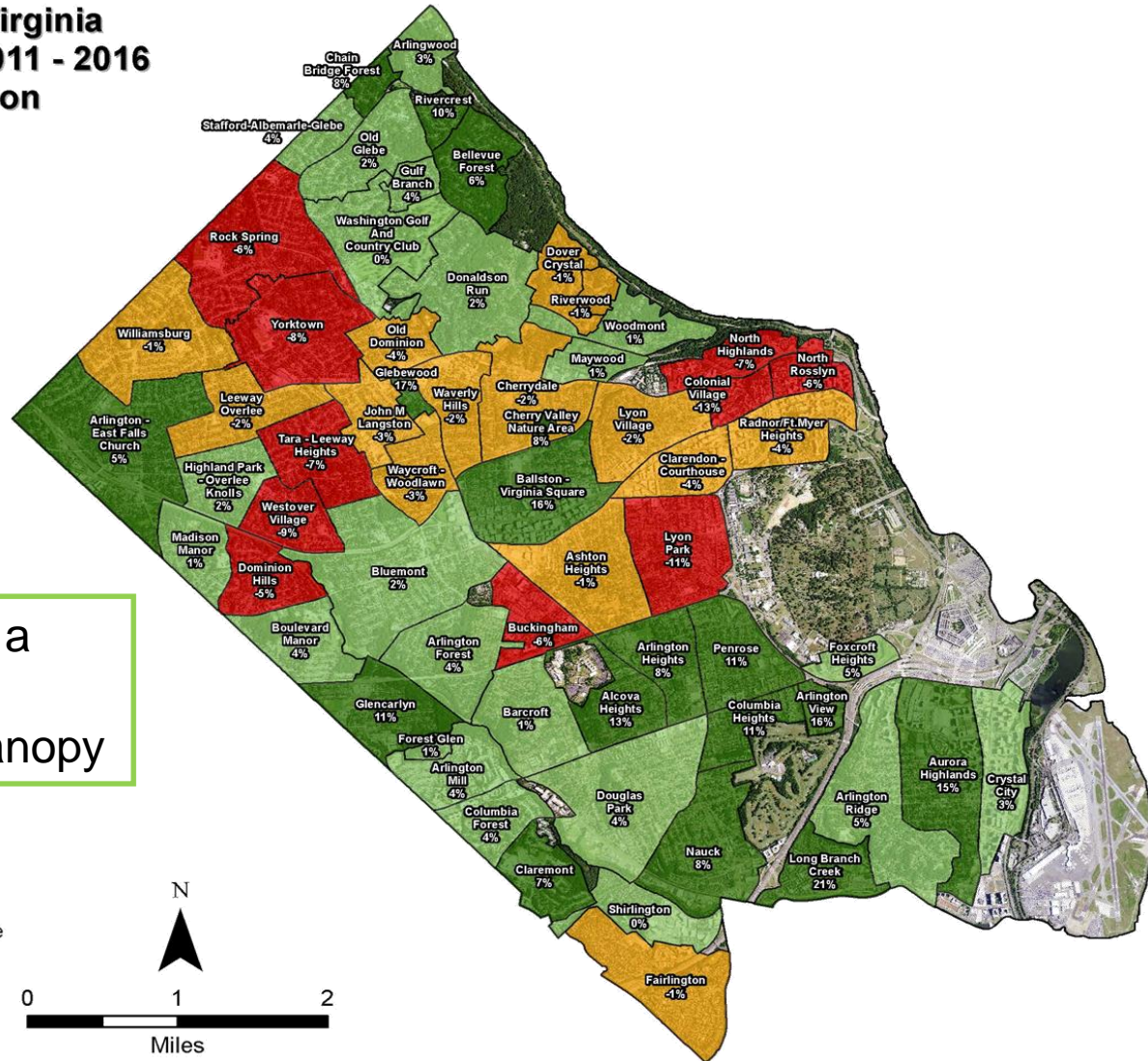


- 41% tree canopy, not including DOD and airport
- 38% tree canopy with all land included
- 1% increase in tree canopy since 2011 study
- Increase due to growth and planting
- Some areas of County have canopy reduction






Tree canopy results by year of data collection

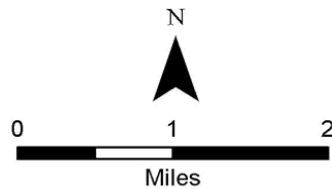
| | 2008 | | 2011 | | 2016 | |
|---------------------------------------|-------|---------|-------|---------|-------|------------|
| | Acres | Percent | Acres | Percent | Acres | Percent |
| Tree Canopy Excluding DOD and Airport | 6,349 | 43% | 5,883 | 40% | 6,015 | 41% |
| Tree Canopy Including DOD and Airport | N/A | N/A | 6,191 | 37% | 6,356 | 38% |

Arlington County Virginia Canopy Change 2011 - 2016 by Civic Association



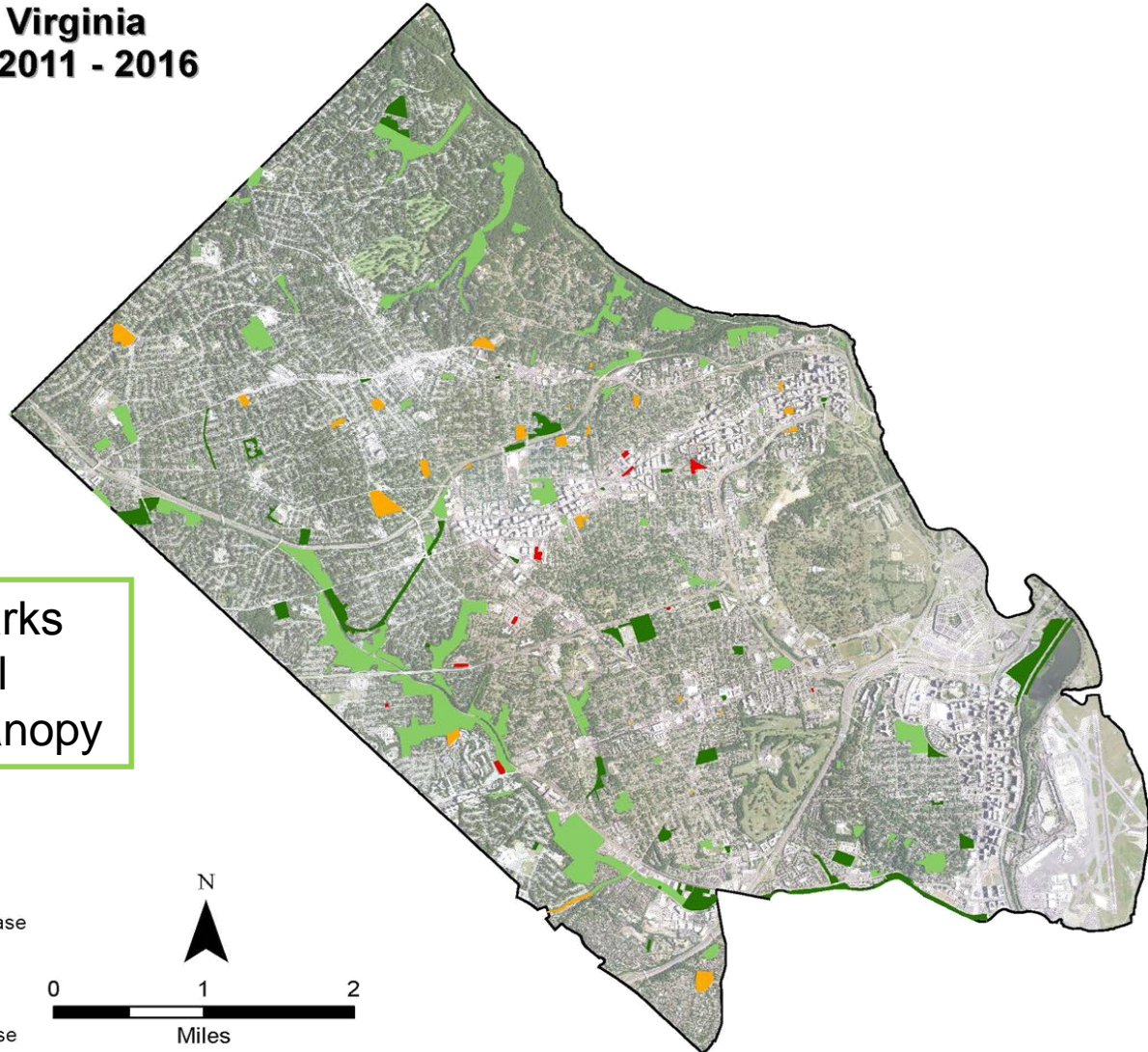
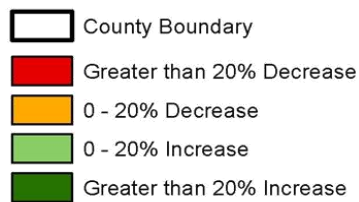
Arlington had a slight overall increase in canopy

-  County Boundary
-  Greater than 5% Decrease
-  0 - 5% Decrease
-  0 - 5% Increase
-  Greater than 5% Increase



Arlington County Virginia Canopy Change 2011 - 2016 By Parks

Arlington's Parks
had an overall
increase in canopy



- Support planting and preservation in areas of loss and low canopy.
- Target outreach efforts for the Tree Canopy Fund.
- Informs the Urban Forest Masterplan update.
- Informs planning activities county-wide.