

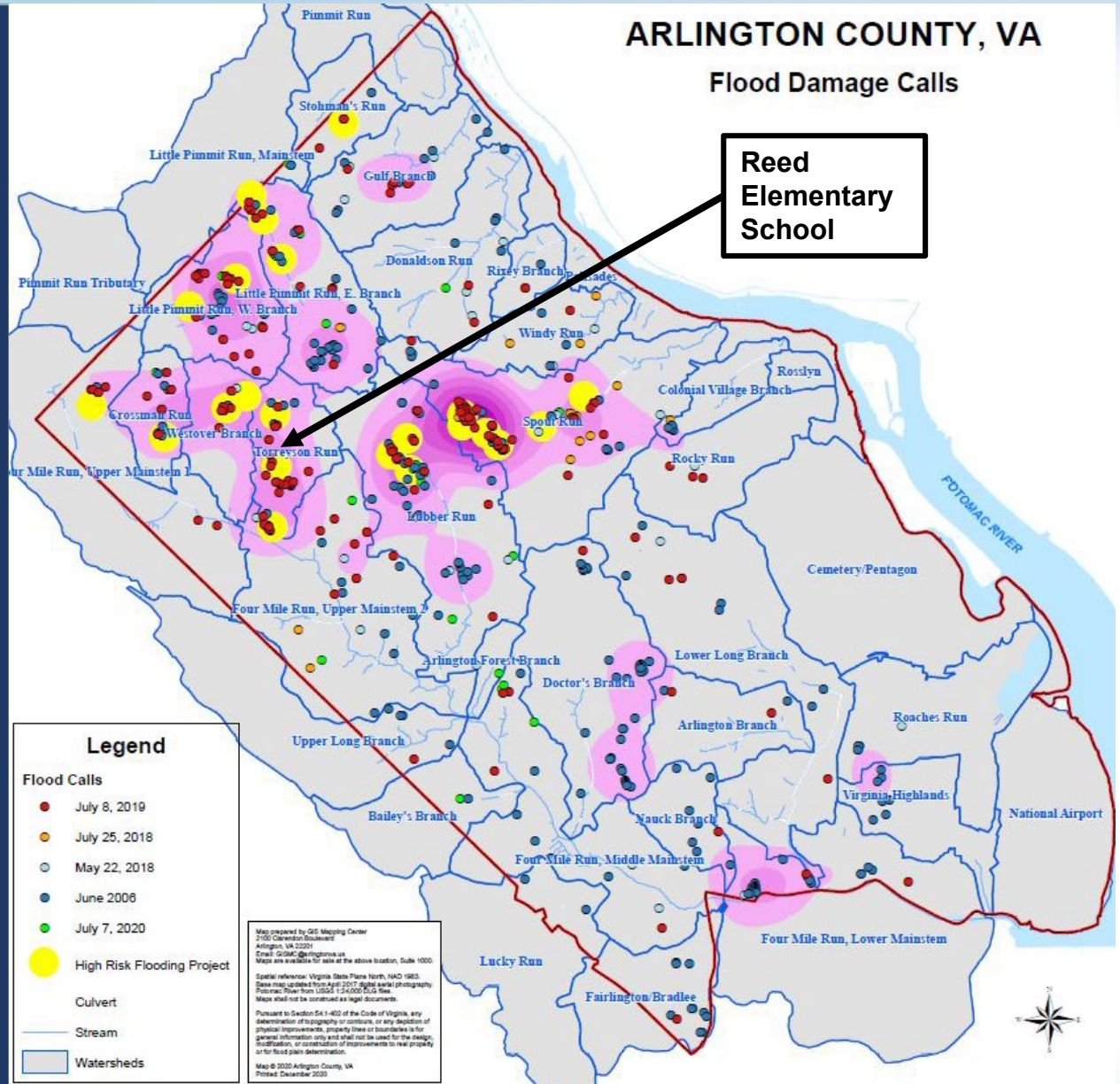
Reed School Detention Vault

County-APS Partnership

A Call for Action

Map demonstrates flood calls from the following storms in relation to high risk flooding projects identified in Stormwater Master Plan:

- July 7, 2020
- July 8, 2019
- July 25, 2018
- May 22, 2018
- June 2006



Moving Projects Towards Resilience

Moving Projects Forward

CIP focused on FY21 & FY22 to move forward current programs and projects in-progress

- \$14.6M in FY 2021
- \$21.1M in FY 2022

Blended Approach

Distributed detention, overland relief, and addition of tertiary system elements on multi-phase, watershed-scale projects

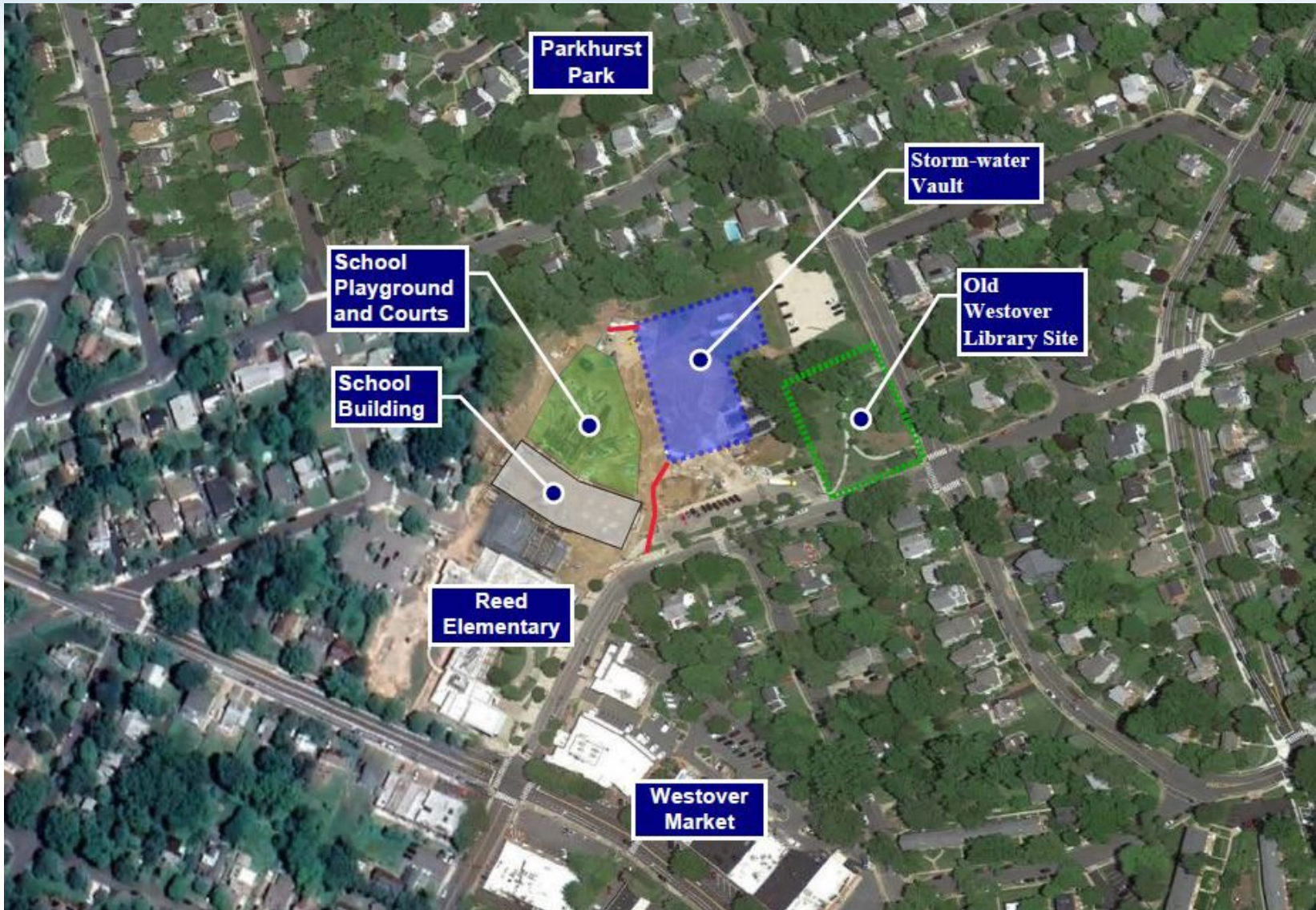
Goal is to reduce flooding so that it does not impact building / home integrity, or threaten public safety when combined with private investments

Design

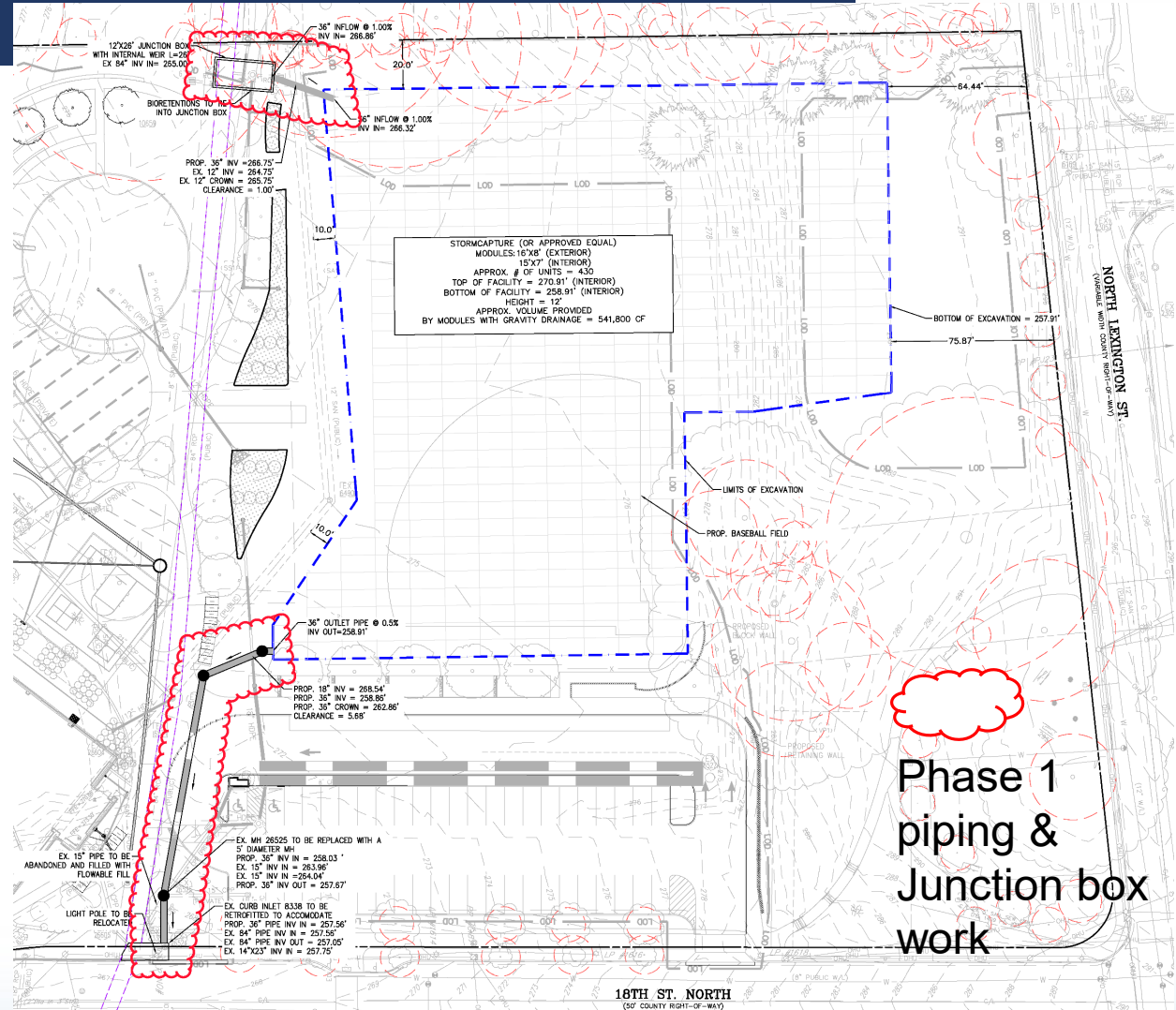
Use a minimum 10-year design standard that is updated to reflect impacts of climate change

Model 100-year flood plain in watersheds to mitigate storm impact

Reed School Site



Phasing of work

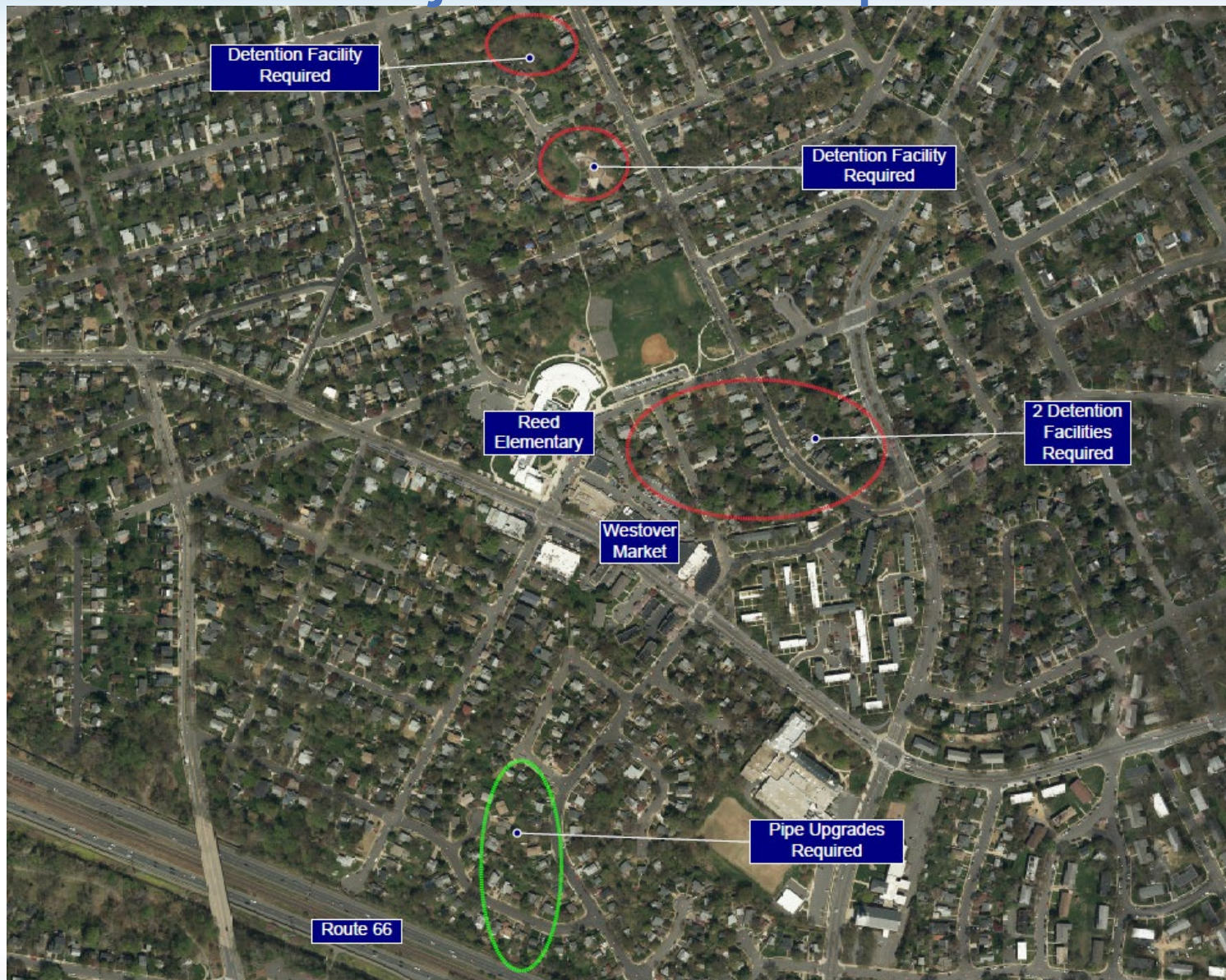


Phase 1
 piping &
 Junction box
 work

Value Proposition

- Detention at Reed
 - 635K cf storage needed to mitigate downstream impacts from the 10 year storm in Westover along with other piping improvements in CIP
 - New option (540K cf) provides 85% of watershed requirement for 10 year storm
- Larger Detention at Reed School will avoid:
 - Four additional underground stormwater detention facilities with approximate total cost of \$15M
 - Two in the Parkhurst park upstream of Reed school
 - Two downstream of Reed School requiring property acquisitions
 - Tree removals including two champion trees
 - Would take longer to implement multiple projects vs one project
 - Cost of possible utility relocations

Avoided Projects and Impacts



Project Overview

Schedule

Design and construction

- 100% design plans for Phase I from APS by end of 2020
- Phase 1 piping work – Jan 2021- Summer 2021
- Construction estimated completion Sept. 2021—before school start

Phase 2 construction of detention vault will follow and will require 9-12 months of construction

Cost

- Phase I: \$1.544M estimated (Design & Construction)
- Phase I & II Combined: \$14M - \$16M estimated (Design & Construction)

Issues to Manage on Project

- Tree impacts
- Cannot impact school opening Sept 1, 2021
- Fields will not be available when school is opened
 - School playground, old Westover library site and Parkhurst Park available
- Construction impacts vs significant stormwater benefit in Westover area
- Truck traffic will be significant during excavation

- Strong community and business support – assist in public engagement (4 CA's, CivFed Stormwater Committee)

Questions?

- **Demetra McBride**
- **Bureau Chief, Office of Sustainability and Environmental Management**
- **703-228-3612**
- **dmcbride@arlingtonva.us**

- **Aileen Winquist**
- **Stormwater Communications Manager**
- **703-228-3610**
- **awinquist@arlingtonva.us**