

**ARLINGTON COUNTY PROFILE**

**OVERVIEW OF ARLINGTON**

Arlington County is located in northern Virginia, directly across the Potomac River from Washington, D.C. The County encompasses 25.8 square miles of land, which was originally split off from Fairfax County in 1801 and ceded by Virginia to be included in the ten-mile square Federal District. In 1847, however, Congress allowed the land to return to the jurisdiction of Virginia following a vote in favor of retrocession by its members. This area was then known as Alexandria City and Alexandria County. In 1920, to avoid confusion, the county was renamed Arlington County.

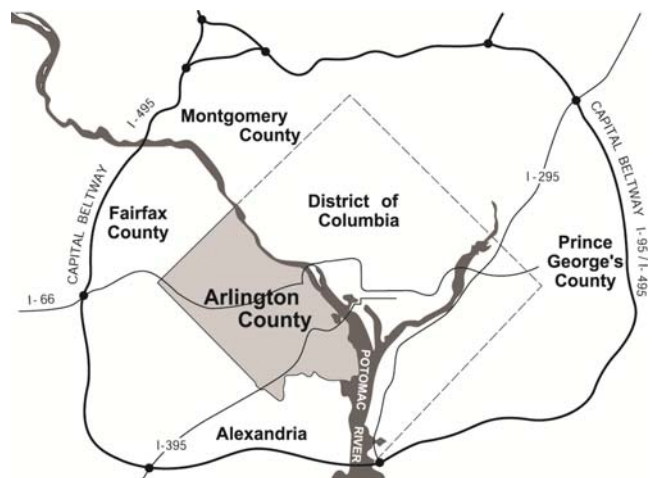
Annexation of any part of Arlington County by neighboring jurisdictions is prohibited by present law unless the entire County is annexed with the approval of County voters. There are no jurisdictions with overlapping debt or taxing powers. The water and sewage systems are operated on a self-supporting basis by the County government.

Arlington’s location in the center of the Washington metropolitan region, just five minutes from Washington by car or Metrorail, has made the County a highly desirable business and residential location. Arlington has maintained high-quality residential neighborhoods while supporting well-managed growth. High-density commercial and residential development is focused around Metro stations in the Rosslyn-Ballston corridor and the Jefferson Davis corridor, which includes both Pentagon City and Crystal City.

Arlington County has an estimated 2017 population of 222,800, an increase of 17.6 percent over the 2000 population. Additionally, Arlington is home to an estimated 222,300 jobs, as of January 1, 2017.

Almost all of the land in Arlington County has been developed. This development consists of extensive single-family residential areas, as well as commercial, office, and multi-family residential structures.

Economic activity in Arlington County has historically been closely associated with numerous governmental activities of the Washington Metropolitan region. In 2017 about 22.0 percent (or about 48,900) of the jobs in Arlington County are with the numerous federal, state or local government agencies. In recent years, however, the private employment base, particularly in the service sector, has increased substantially. The 2017 estimate is that 23.1 percent of total employment (about 51,300 jobs) is in the professional and technical services sector. An additional 30.3 percent of total employment (about 67,300 jobs) is in the accommodation, food, and other services sectors.



**ORGANIZATION OF ARLINGTON COUNTY GOVERNMENT**

The government of Arlington County has been organized according to the County Manager Plan of Government since 1932. Arlington County was the first jurisdiction in the United States to adopt a manager form of government by popular vote.

The five members of the County Board are elected at large for staggered, four-year terms. No more than two members are elected at one time. The Chairman of the County Board is elected annually by the members.

The County Board is responsible for several appointments. The County Board appoints a County Manager to serve as the chief executive and administrator of the County. The County Manager serves at the pleasure of the County Board, implements its policies, directs business and administrative procedures, and appoints department directors.

Assisting the County Manager are four Deputy County Managers, three Assistant County Managers and the Directors of 12 departments: Fire; Police; Emergency Management; Environmental Services; Human Services; Economic Development; Community Planning, Housing and Development; Parks and Recreation; Management and Finance; Libraries; Human Resources; and Technology Services.

The County Board also appoints an Auditor to complement and augment the County’s existing internal auditing program. The auditor, and an advisory committee, report directly to the County Board and focuses on tightening financial oversight and deepening program performance review.

Finally, the County Board appoints a County Attorney. The County Attorney provides legal services to the County Board, County agencies and personnel, elected County officials, independent County boards and commissions, and the Arlington School Board.

The operation of public schools in Arlington County is the responsibility of a five-member School Board. School Board members serve staggered, four-year terms in a sequence similar to that of County Board members.

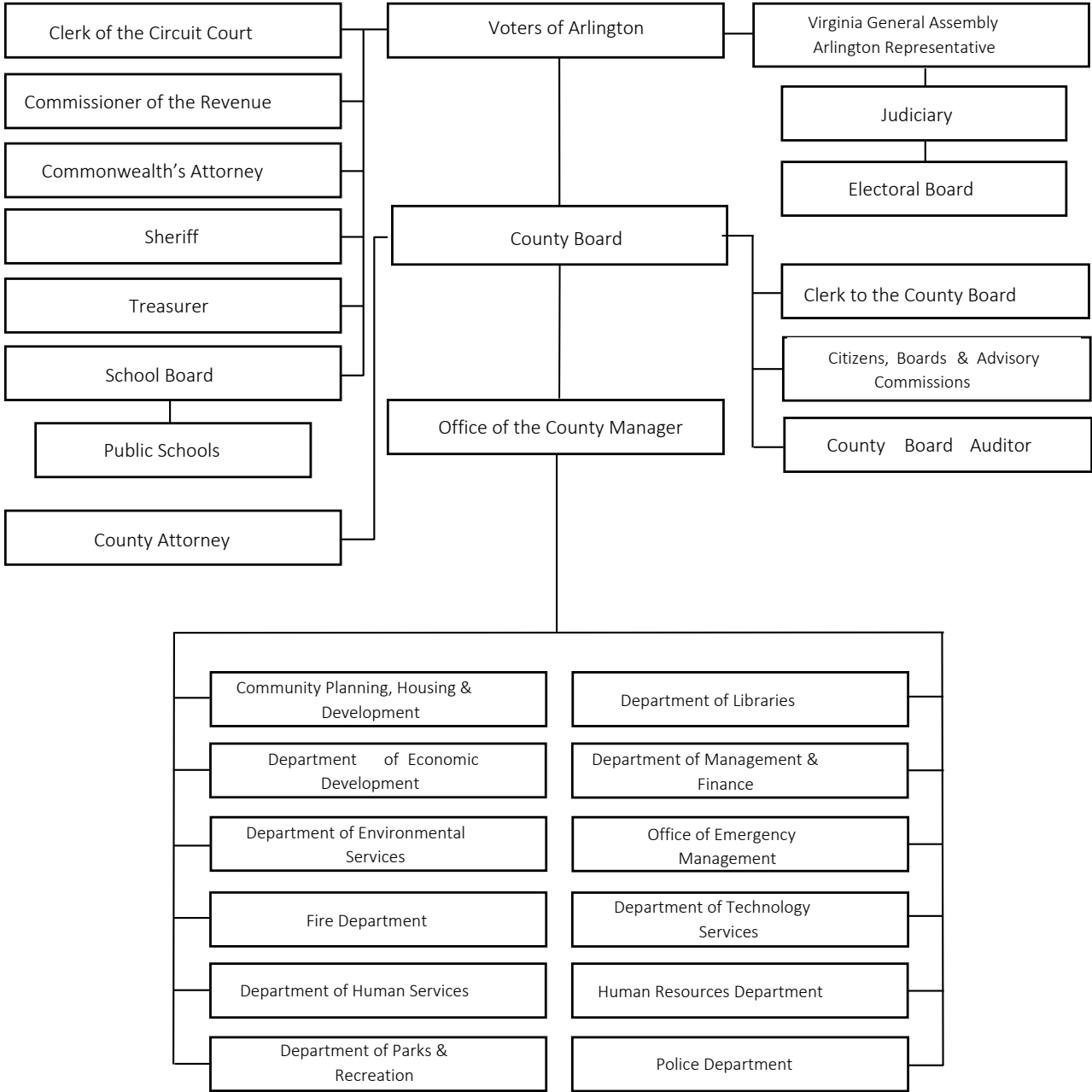
A 1992 revision of the State Code provided a local option to elect the School Board; Arlington voters chose to exercise that option via a November 1993 referendum. As of November 1994 and continuing each year thereafter, School Board members are elected.

The Superintendent of Schools is appointed by the School Board for a four-year term; the Superintendent administers the operations of the County’s public schools. The local share of the cost of operating public schools in the County is met with an appropriation and transfer by the County Board from the County’s General Fund. Operations of the School Board, however, are independent of the County Board and the County administration as prescribed by Virginia law.

In addition to the County Board, other elected County officials include the Commonwealth’s Attorney, Sheriff, Commissioner of the Revenue, Treasurer, and Clerk of the Circuit Court. The Judges of the Circuit Court, the General District Court and the Juvenile and Domestic Relations District Court are appointed by the State legislature.

The structure of Arlington County’s Government is depicted in an organizational chart on the following page.

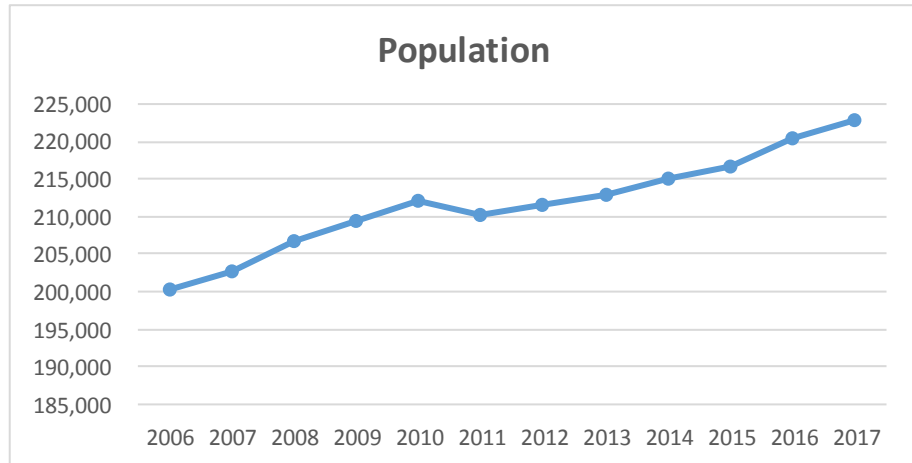
**ORGANIZATION OF ARLINGTON COUNTY GOVERNMENT**



**DEMOGRAPHICS**

The Planning Division of the Department of Community Planning, Housing and Development (CPHD) estimates Arlington County’s 2017 population to be 222,800. Arlington continues to be among the most densely populated jurisdictions in the country. The County’s population has grown over the past eleven years, as shown in the chart on the following page, and is projected to continue at a similar rate. The 2011 dip in population is due to the use of 2010 Census Data. The

population estimates for 2002-2009 used the 2000 Census as a base. The new 2010 Census data were used to recalibrate the Planning Division’s method for estimating Arlington’s population for 2011 and beyond. The Planning Division estimates that 18.9 percent (42,000 persons) of the population are under the age 20. Those between the ages of 25-34 make up the largest share of the population at 26.3 percent or 58,500 persons. Estimates for 2002-2009 and 2011-2013 are provided by the CPHD Planning Division, and are based on new residential construction and estimates of average household size and vacancy rates. The 2010 number is based on the 2010 Census.



**RACIAL/ETHNIC COMPOSITION**

Arlington County takes pride in, and gains vitality from, the diversity of its population. According to the 2010 Census, 64.0 percent of Arlington residents are white, 15.1 percent are Hispanic, 8.2 percent are black or African-American, 9.6 percent are Asian or Other Pacific Islanders, and 3.0 percent identified as another race or two or more races. (Note: percentages may not add due to rounding.)

The Planning Division estimates that the aggregate population of Arlington increased by 9.6 percent between 2000 and 2010. (Note that staff believes the Census 2000 figure to be a bit lower than the actual population.) From 2000 to 2010 the largest increase in population among the racial/ethnic groups was an increase of about 18,472 among the white population. Among other groups, the Asian-Pacific Islander population also increased substantially, by 3,549 persons. The Hispanic population decreased by 3,886 persons and the African-American population decreased by 156 persons between 2000 and 2010. The following table shows the change in population among various racial/ethnic groups from 2000 to 2010. The 2000 and 2010 figures are from the Decennial Censuses.

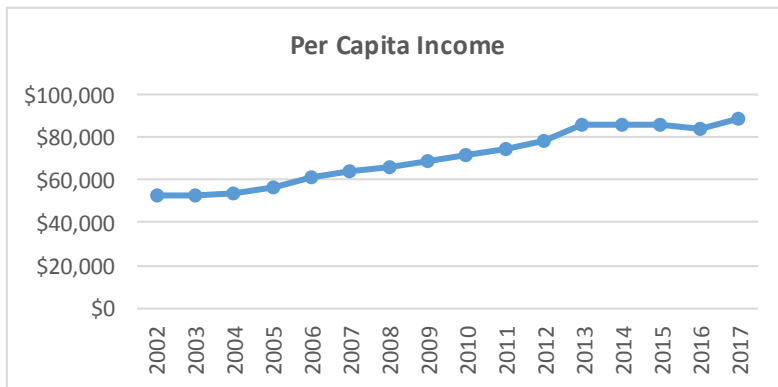
Racial/Ethnic Group	2000	2010	% Change
Non-Hispanic/Latino			
White alone	114,489	132,961	16.1%
Black or African American alone	17,244	17,088	-0.9%
Asian/Pacific Islander	16,346	19,895	21.7%
Other/MultiRacial	6,106	6,301	3.2%
<b>Total Non-Hispanic/Latino</b>	<b>154,185</b>	<b>176,245</b>	<b>14.3%</b>
Hispanic/Latino	35,268	31,382	-11.0%
<b>TOTAL</b>	<b>189,453</b>	<b>207,627</b>	<b>9.6%</b>

**EDUCATION**

Arlington’s population is among the most highly educated in the country. According to the U.S. Census Bureau 2014 American Community Survey, 93.5 percent of all household residents age 25 and older were high school graduates, 72.9 percent were college graduates, and 38.4 percent had graduate or professional degrees. Of the Arlington Public School (APS) class of 2016-2017, 93 percent planned to pursue higher education, and the average expenditure per pupil was expected to be \$18,957 in the 2017 fiscal year.

**PERSONAL INCOME**

The educational achievements of Arlington’s population are reflected in the County’s income statistics as well. In 2016, according to Planning Division estimates, Arlington’s per capita personal income was \$89,300. According to the U.S. Census American Community Survey, the median household income in Arlington County in 2015 was \$106,768. The Planning Division estimates that median household income in 2017 is \$110,655. According to ESRI, Arlington County had an effective buying power of \$10.24 billion in 2016.



The Per Capita Income graph above shows the growth in per capita personal income since 2002. Income figures for 2002 through 2006 are from the U.S. Bureau of Economic Analysis and the figures for 2007 through 2017 are estimated by the Arlington County Planning Division.

**HOUSING**

According to Planning Division estimates, there are 114,000 total housing units in Arlington as of January 2017. A housing unit is a multi-family dwelling or a single-family dwelling attached to other dwellings or a single-family detached dwelling. The majority (65.2 percent or 74,300) of housing units in Arlington are multi-family. There are an estimated 28,500 single-family detached (25.0 percent), and 11,100 single-family attached housing units (9.7 percent) in Arlington. Since 2000, growth in housing units has been largely due to multi-family development. Between 2000 and January 2017, 21,927 new multi-family units have been completed (an increase of 41.8 percent), compared to 816 single family attached units. There has been a net gain of 832 single family detached units during the same time span. In 2014, the Housing Division estimated that owners occupied 44.8 percent and renters occupied 55.2 percent of occupied housing units.

**HOUSEHOLD COMPOSITION**

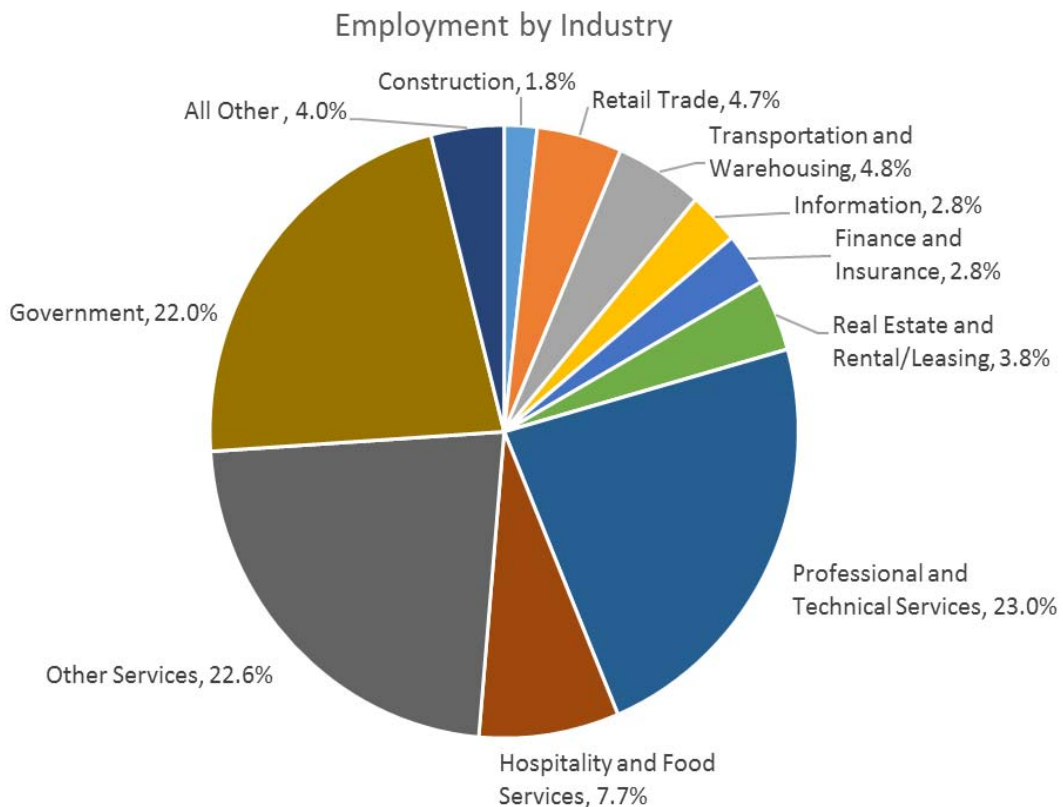
All persons living in a housing unit are termed a household. As of January 2017, the CPHD Planning Division estimates that there are 105,000 households in Arlington County. According to the 2010 Census the average household size is 2.09 persons. The 2010 Census also reports that an estimated 42.4 percent of Arlington households were family households and 57.6 percent were non-family households.

**COMMUNITY FACILITIES IN ARLINGTON**

▪ Acres of County Open Space	1,190	▪ Synthetic Fields	15
▪ Miles of Bicycle/Jogging Trails	89	▪ Nature Centers	3
▪ Parks	167	▪ Senior Centers	5
▪ Tennis and Basketball Courts	179	▪ Community Centers	14
▪ Natural Grass Fields	82	▪ Fire Stations	10
▪ Libraries	8		

**AT-PLACE EMPLOYMENT**

According to Arlington County estimates, the total number of jobs in the County increased by about 10.5 percent between 2000 and 2017. The service sector comprises a significant share of jobs in Arlington. About 23.1 percent of all jobs are in the professional and technical services sector. Another 22.6 percent of jobs are in other service sectors, including administrative, education, and health. The government sector also continues to comprise a large share of Arlington jobs. About 22.0 percent (48,900 jobs) of the County’s January 2017 employment is estimated to be in government. The percentage of jobs in the government and business services sectors is likely to change in the short term as the County adjusts to employment moves associated with relocation of Department of Defense facilities to other jurisdictions due to the Base Realignment and Closure Commission (BRAC) recommendations of 2005. The 2016 unemployment rate in Arlington was 2.6 percent.



Sector	Jobs
Construction	4,000
Retail Trade	10,400
Transportation	10,700
Information	6,200
Finance and insurance	6,200
Real estate and Rental/Leasing	8,400
Professional and technical services	51,300
Hospitality and Food Services	17,100
Other Services	50,200
Government	48,900
All other	8,900
<b>Total</b>	<b>222,300</b>

- Source: Sector employment are Arlington County Planning Division 2017 estimates based on data from the U.S. Bureau of Economic Analysis for the year 2015(most current available). Unemployment data is from the U.S. Bureau of Labor Statistics Local Area Unemployment Statistics (LAUS).
- Note: Jobs by sector may not add due to rounding

Arlington County has a solid economic base as evidenced by the presence of numerous major employers and the County's sophisticated blend of traditional commerce, such as health services and retail sales, and technological industries, such as telecommunications and software. Although the BRAC recommendations have decreased Arlington employment in the short term, anticipated upgrades to Arlington’s office stock in Crystal City, and the proximity of the County to Washington D.C. indicate that a quick recovery is likely.

**TOP 10 PRINCIPAL PRIVATE EMPLOYERS**

	COMPANY	NATURE OF BUSINESS	ARLINGTON EMPLOYEES
1	Accenture	Consulting Services	2,500-4,999
2	Deloitte	Consulting Services	2,500-4,999
3	Virginia Hospital Center	Healthcare	2,500-4,999
4	Booz Allen Hamilton	Consulting Services	1,500-1,999
5	Corporate Executive Board	Consulting Services	1,000-1,499
6	Marriott International, Inc.	Hotels	1,000-1,499
7	Bureau of National Affairs	Information Services	1,000-1,499
8	PAE Government Services	Services	600-999
9	Lockheed Martin Corp	Air Transportation Equipment/Defense Systems	600-999
10	Marymount University	Education	600-999
<b>TOTAL</b>			<b>13,800-24,490</b>

Source: Arlington Economic Development

SELECTED SERVICE INDICATORS

	<b>FY 2016 Actual</b>	<b>FY 2017 Estimate</b>	<b>FY 2018 Estimate</b>
General Obligation Bond Rating	Aaa/AAA/AAA	Aaa/AAA/AAA	Aaa/AAA/AAA
New Voters Registered by Electoral Board (Calendar Year)	23,500	7,500	10,000
Inspections Conducted for Fire Code Enforcement, fire protection system, and hazardous materials inspections	2,711	2,800	2,900
Percentage of Fire Emergencies Reached Within Four Minutes of Dispatch	58%	58%	58%
Fire/EMS/Public Service Responses	61,654	58,000	58,000
Refuse Collected on County and Contracted Routes (Tons)	31,573	28,000	27,100
Total Curbside Recycling Tonnage Collected	14,122	14,000	14,000
Licensed Child Care Facilities (Family Day Care Homes)	148	150	150
Number of registrations in Parks and Recreation programs	50,670	50,900	51,200
Number of individuals registered with the Office for Senior Adult Programs (OSAP)	6,779	6,000	6,500
Police response time for Priority 1 calls (minutes from dispatch to arrival)	4:49	4:50	4:50