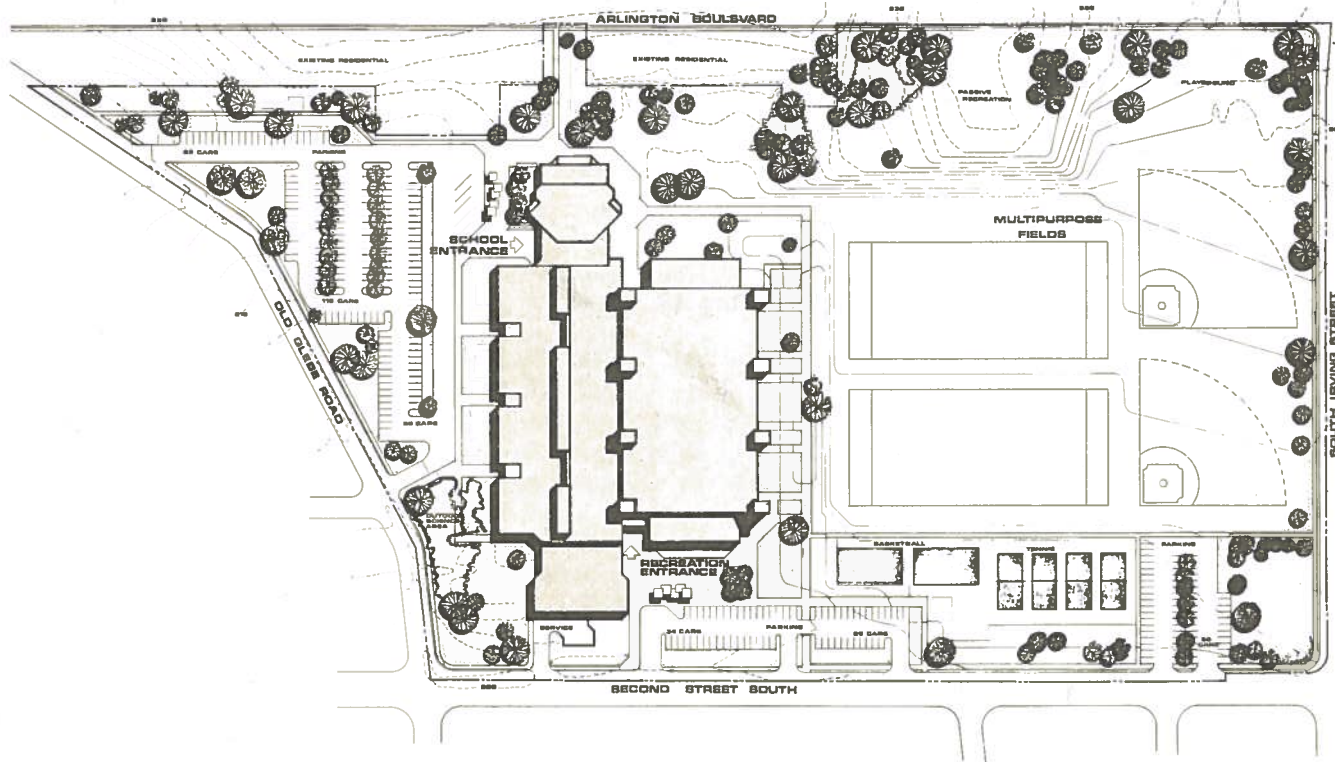


Thomas Jefferson Junior High School & Community Center

Change - technological advancement-innovation are synonymous with the educational and social climate of today. There is a growing need for education that extends beyond book learning—a need for a facility that aims at the total development of the community intellectually and physically. Solutions come through innovative planning—through new ideas, new concepts, education and community planning—through planning with imagination and vision.

Thomas Jefferson Junior High School and Community Center, Arlington, Virginia, has been planned to answer these growing needs. It has been planned as a junior high-school and a community center—a jointly used, jointly operated, jointly funded facility shared by both school and community. Thomas Jefferson is a place with interests for all ages. A community growth center. Day and night activities have been planned for preschoolers, teens, families, adults, senior citizens, artists, gymnasts and actors.



SITE PLAN

The Arlington County School and the Department of Environmental Affairs merged their funds to create a junior high school and community center able to serve the recreational, leisure, and educational needs of the entire community, from preschoolers to senior citizens.

Externally, existing natural contours have been preserved as much as possible, to provide outdoor park areas, lighted, multi-purpose fields, basketball courts and tennis courts for various outdoor recreation.

The firm of Vosbeck Vosbeck Kendrick Redinger, a comprehensive services architectural, engineering and planning firm based in Alexandria, Virginia planned and designed the new facility.

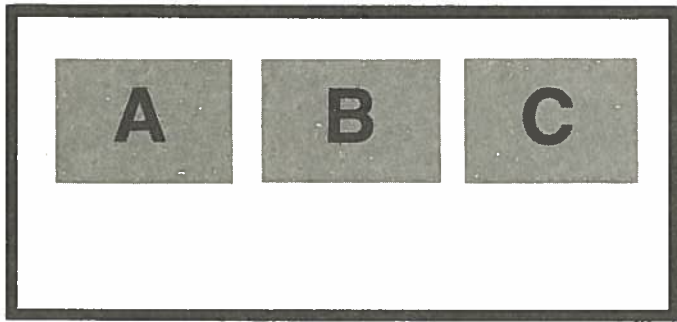
A grant from the Educational Facilities Laboratories, Inc., was used in the planning process. Through the use of "charrette", educators, students, recreational specialists, school administrators, parents, planners, and others were involved in the planning.

The design solution resulted in a two-level building of three schools-within-a-school. Each school has its own entrance on the upper floor. The schools were laid out on 5-foot modules which allow for flexibility through demountable partitions, and portable furnishings and equipment arrangements. To create a sense of identity for each "small school"—and as a practical method of directing students to the right area—each school is color coded by carpeting and wall colors.

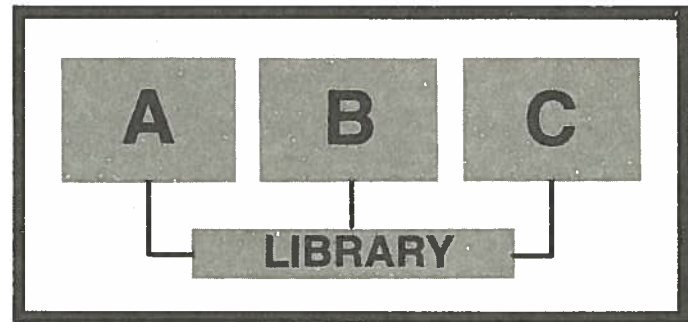
The Media Center, adjacent to all three schools on the upper level, is the focal point for the instructional program. It will contain 24,000 volumes as well as study carrels and viewing and typing areas. The completely open Media Center is designed specifically to encourage students to walk through and to use it.

Located on the lower level, are the dining-commons areas, one for each of the three schools. Student lockers are located in those areas. The commons areas provide an excellent informal gathering place for students.

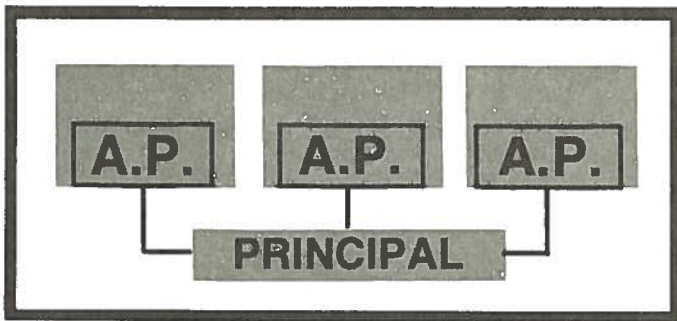
Other "shared" unstructured areas include labs for foreign languages, industrial arts, home economics, fine arts, and business education. The auditorium and CEF are not only shared by the schools, but also accommodate community use on a scheduled basis during the school day.



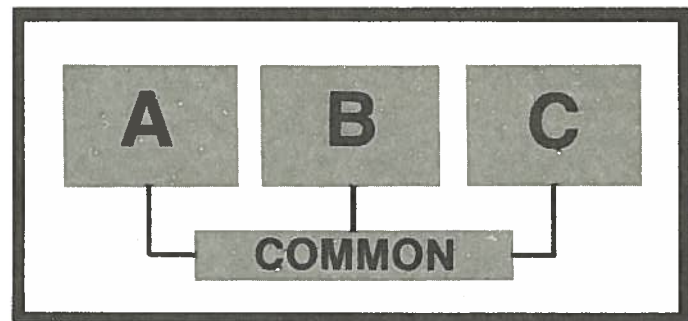
This is a school. Within this school are three "little schools". The school's design will allow flexibility in instruction by either grade or discipline.



The three schools will be closely related to the library. The library will be the focal point for the instructional program containing 24,000 volumes, study carrels and viewing and typing areas.



In addition to the academic areas, each school will contain its own teacher's work and preparation rooms, toilets, guidance offices, and administrative core. Each school administrator (assistant principal) will be responsible to the school principal.



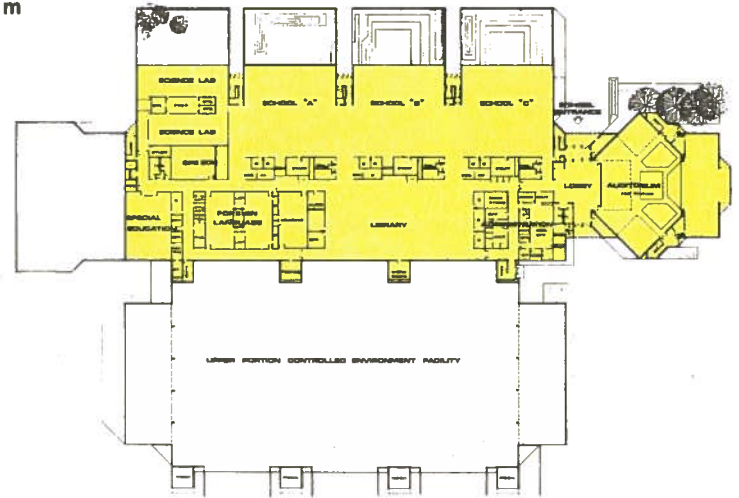
Students in the three schools will share common facilities. These facilities will include: science, art, home economics, and industrial arts labs; music rooms; dining commons, auditorium and the controlled environment facility.

SCHOOL WITHIN-A-SCHOOL CONCEPT

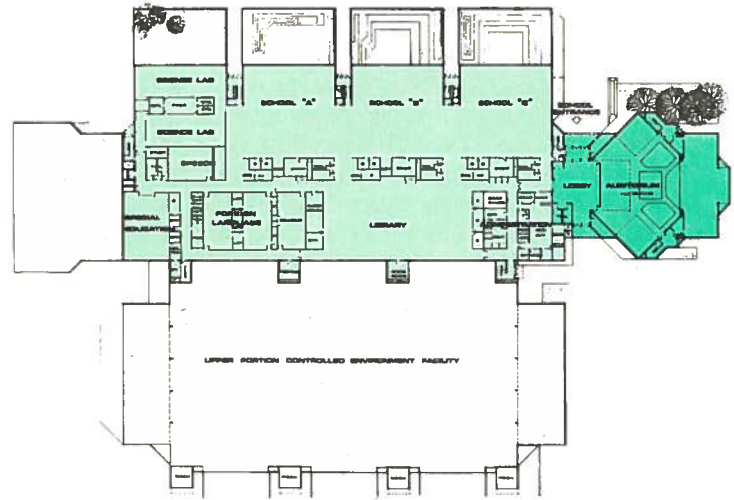
SPACE USAGE

6^{a.m.} 9 12ⁿ 3^{p.m.} 6 9 12^m

	6 ^{a.m.}	9	12 ⁿ	3 ^{p.m.}	6	9	12 ^m
SCHOOL A		Yellow	Yellow	Green	Green	Green	Green
SCHOOL B		Yellow	Yellow	Red	Green	Green	Green
SCHOOL C		Yellow	Yellow	Red	Green	Green	Green
CLASSROOMS & LABS		Yellow	Yellow	Red	Green	Green	Green
TYPING		Yellow	Yellow	Green	Green	Green	Green
MUSIC		Yellow	Yellow	Green	Green	Green	Green
HOME ECONOMICS		Yellow	Yellow	Green	Green	Green	Green
ART		Yellow	Yellow	Green	Green	Green	Green
INDUSTRIAL ARTS		Yellow	Yellow	Green	Green	Green	Green
AUDITORIUM		Yellow	Yellow	Red	Green	Green	Green
APPLIED ARTS		Green	Green	Green	Green	Green	Green
GAME ROOM		Green	Green	Green	Green	Green	Green
CANTEEN & CLUB ROOM	Green	Green	Green	Green	Green	Green	Green
MAIN GYM A		Yellow	Yellow	Red	Green	Green	Green
MAIN GYM B	Green	Green	Green	Green	Green	Green	Green
AUXILIARY GYM A		Yellow	Yellow	Red	Green	Green	Green
AUXILIARY GYM B	Green	Green	Green	Green	Green	Green	Green

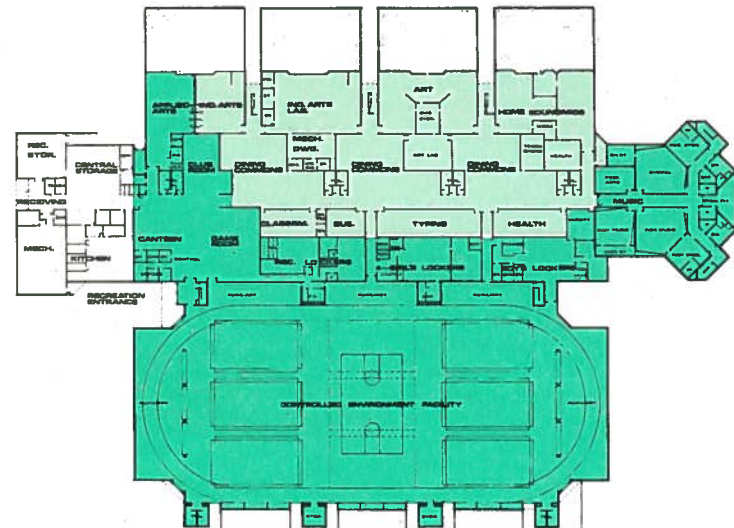
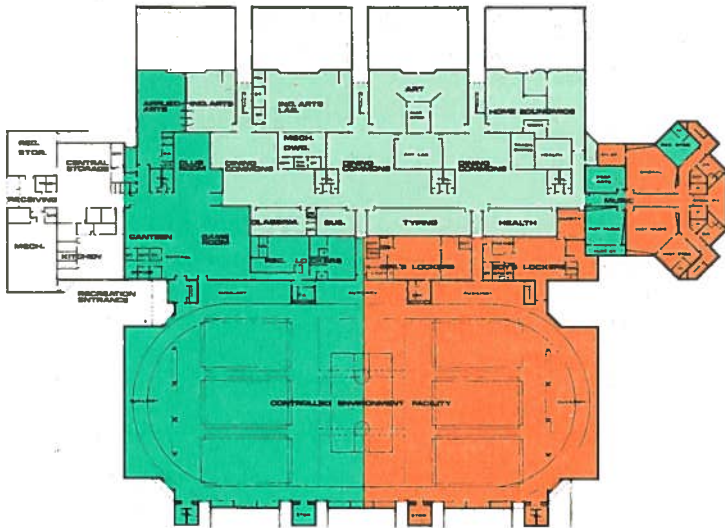


The chart projects maximum potential use of the building daily by both the school and the community. The floor plans reflect three typical time periods.



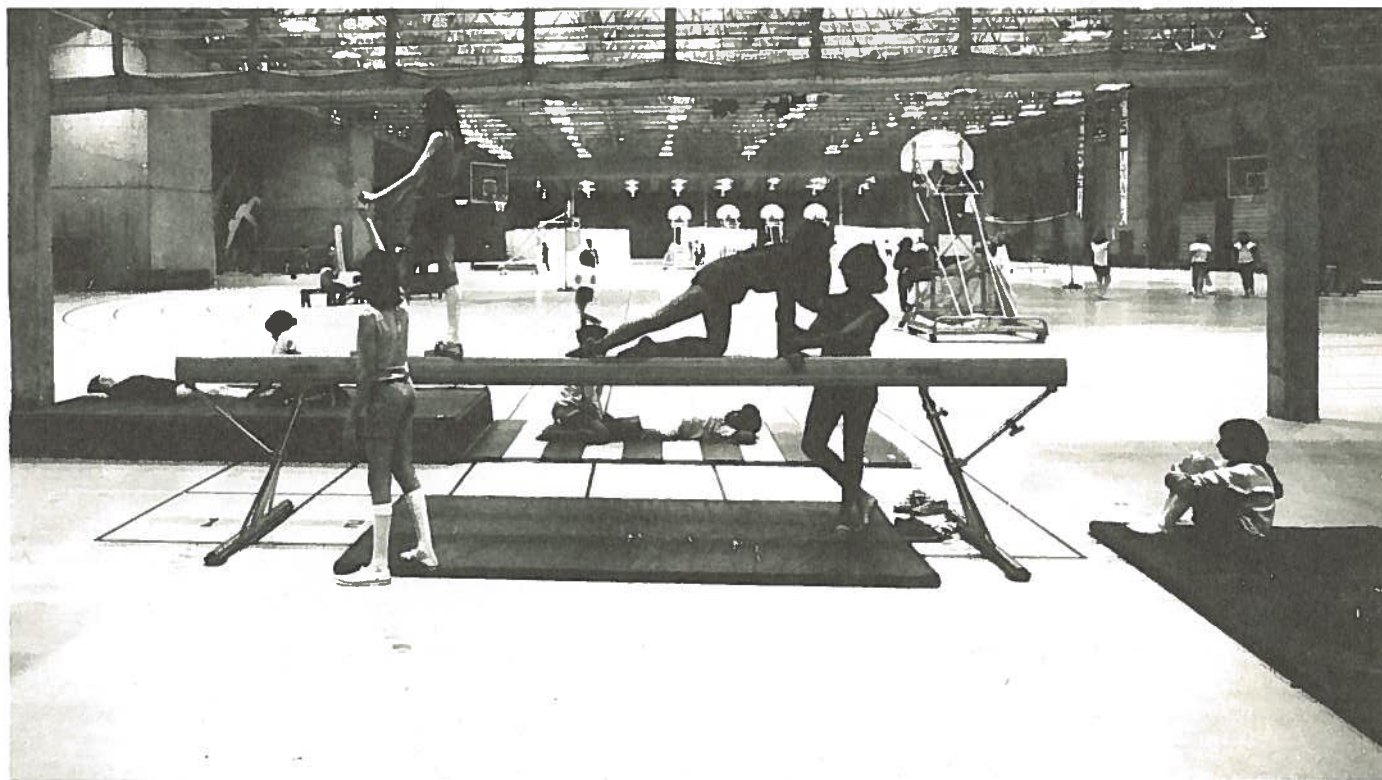
4 p.m.

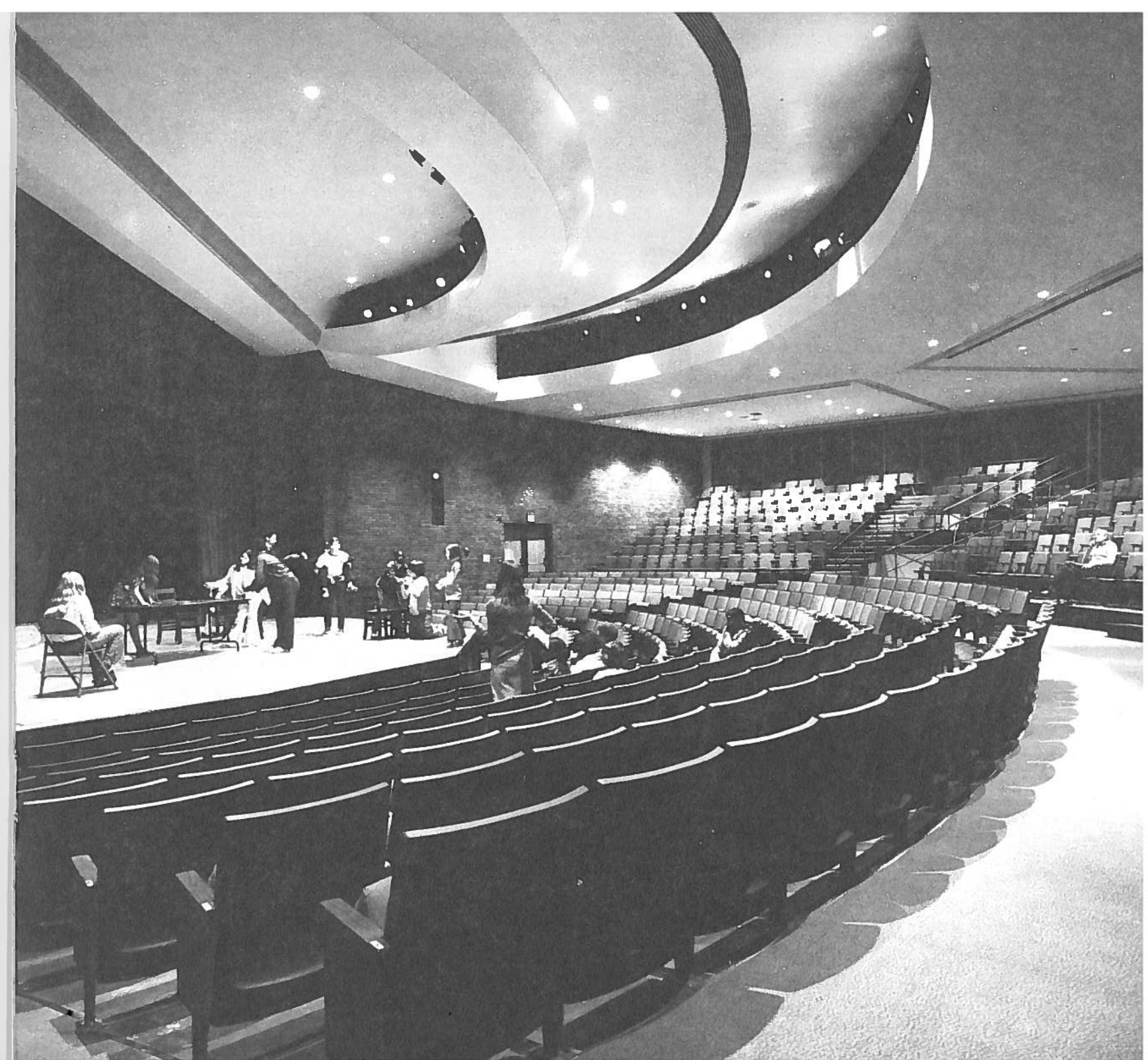
9 p.m.



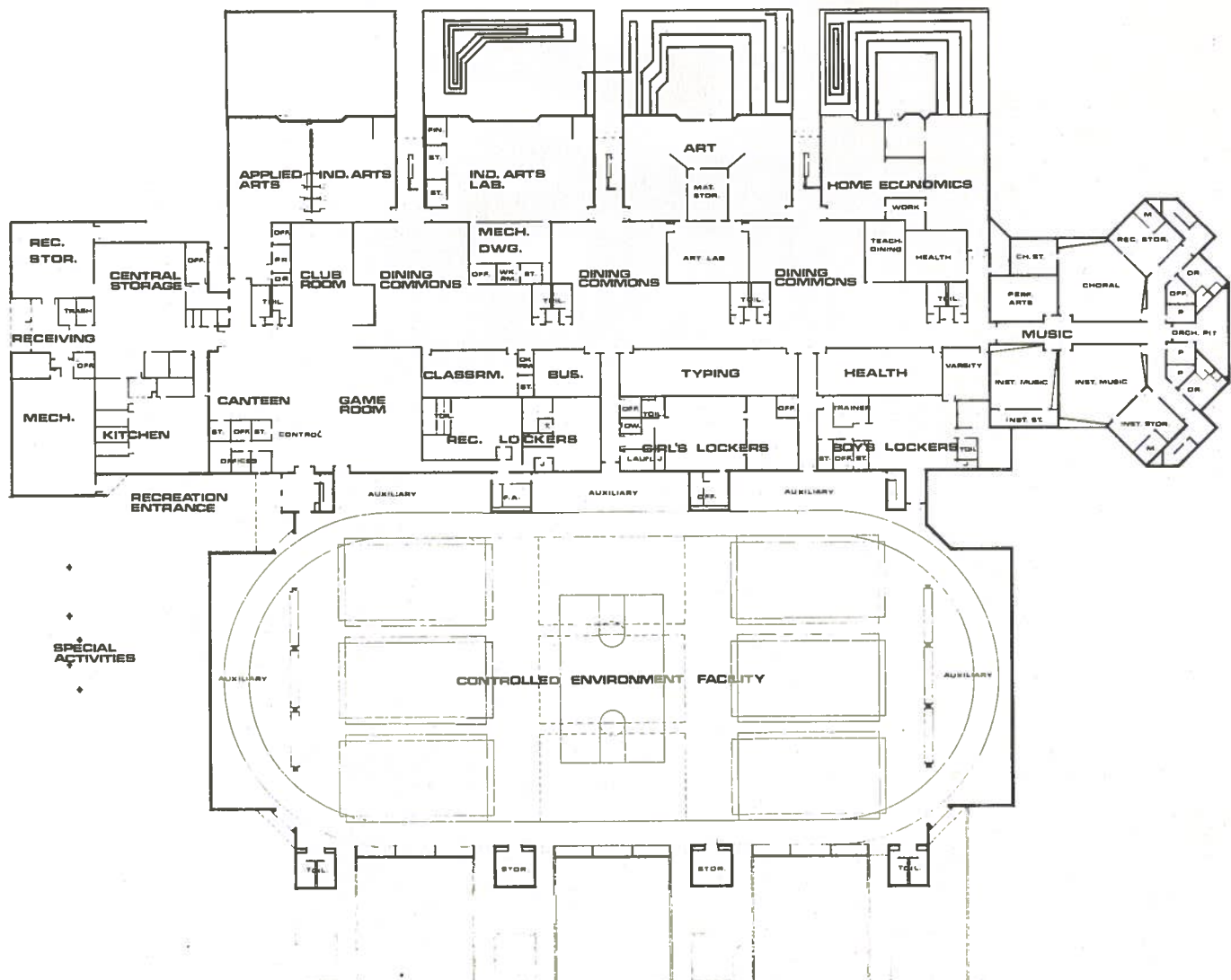
One of the most dramatic areas in the complex is a 68,000 square foot enclosed year-round Controlled Environment Facility which has come to be known as "1½ acres of June". The clear span portion of the facility (160 x 385) seats up to 6,000 people. The 30 foot ceiling and poured, synthetic floor makes virtually any athletic, recreation, or community activity possible. Folding bleachers and movable walls serve as seating and barriers to be used for area dividers.

The auditorium serves both school and community. When functional solely as an auditorium, the space provides seating for 717 people. The theater can be subdivided by movable partitions into three lecture areas, leaving one section as an "intimate theatre" for over 225 people. The three bleacher sections can also be folded back to allow the space to be used for special exhibitions. The music classrooms, dressing and storage are underneath the auditorium. The location of the auditorium allows it to function independently of other areas.

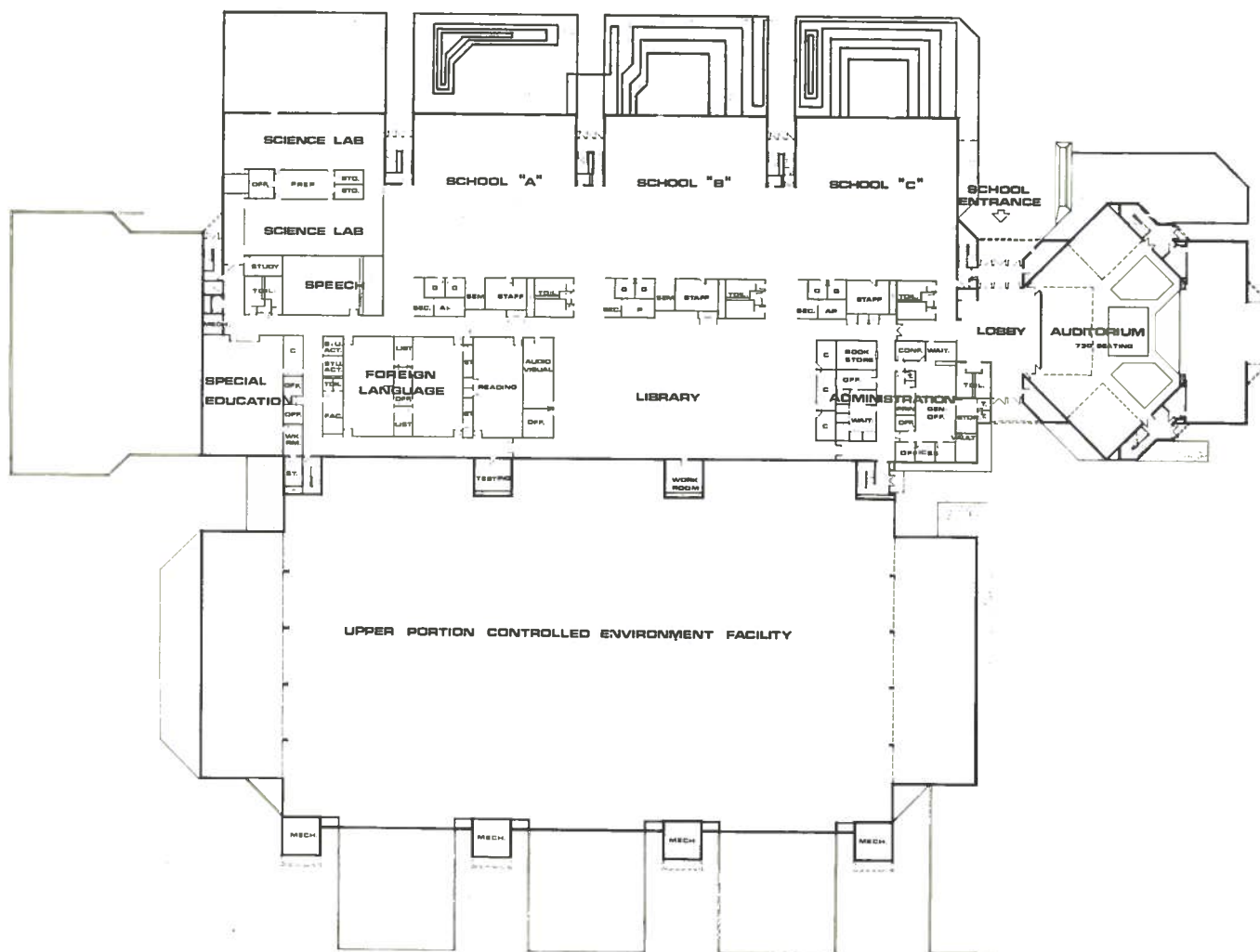




LOWER LEVEL



UPPER LEVEL



SUMMARY

ARLINGTON COUNTY, VIRGINIA

Population	175,000
Size	26 square miles
% Apt. Dwellers	55.4%
% Home Owners	44.6%

BOND ISSUE

Passed Nov. 5, 1968 by Voters	
School Bonds	\$4,150,000
Recreation Bonds	\$2,500,000
TOTAL	\$6,650,000

PLANNING GRANT

Educational Facilities Laboratories, Inc.

SITE

Size	26 acres
Location	Central Arlington
Facilities Provided	
Multi-Purpose Field	
Baseball	
Softball	
Football	
4 Tennis courts	
2 Basketball courts	
Passive Areas	
Family Areas	
Tot Lots	
Parking—333 cars	

BUILDING

Facilities Provided—235,000 Total S.F.
Jr. High School for 1400 students
Academic Classrooms
Library
 24,000 volumes
 Study carrels
 Viewing Areas
Auditorium
 717 seats
 3 Lecture Areas
 Exhibition Space
Special Education Classrooms
 County wide program
Science, Industrial Arts, Home Economics,
Music, Speech, Art Classrooms
Dining Commons
 Seating—175 students each
 Student lockers

Community Recreation Center
 Canteen
 Club Room
 Game Room
 Applied Arts Room
 Performing Arts Room

Controlled Environment Facility
 68,000 S.F. of Multi-use space for
 school and community use

Occupied Fall, 1972

Vosbeck Vosbeck Kendrick Redinger
Architecture Engineering Planning

Wayne Construction Co., Inc. and Earl K. Rosti, Inc.,
Joint Venture Contractors