

TJ Park and Community Center ::: General Information

Located within the Arlington Heights Civic Association at 3501 South 2nd Street, Arlington, VA 22204, County Board-owned TJ Park offers various outdoor and indoor recreational activities. The Community Center was built in 1972 and operates under a joint use agreement with Arlington Public Schools.

The TJ Community Center and Park contains a playground, two lighted basketball courts, four lighted tennis courts and practice wall, a diamond, lighted grass rectangular field, a lighted synthetic field, a community/auxiliary field, open space, fitness trail and exercise area. The site is also the location of the annual Arlington County Fair.

The park is open from sunrise to 10p.m. The community center is open from 6 a.m. –10 p.m. Monday –Friday, Saturday: 8 a.m. - 6 p.m. On Sunday the center is closed. The Va-821 Air Force Jr. ROTC has adopted the Thomas Jefferson park grounds. The Park & Community Center parking contains 329 spaces in four open lots, including 11 handicapped spaces.

TJ Park and Community Center ::: TJ Park Delineation



TJ Park ::: Recreational Amenities



- Playground
- Two lighted basketball courts
- Four lighted tennis courts and practice wall
- Diamond
- Lighted grass rectangular field
- Lighted synthetic field
- Community/auxiliary field
- Open space

- fitness trail and exercise area
- Arlington County Fair

Park and Community Center Use ::: Estimated Participations

Use - Sport and Fitness Leagues, Individuals Groups

Estimated Total Participations - Individuals Attending Facility for a Particular Purpose

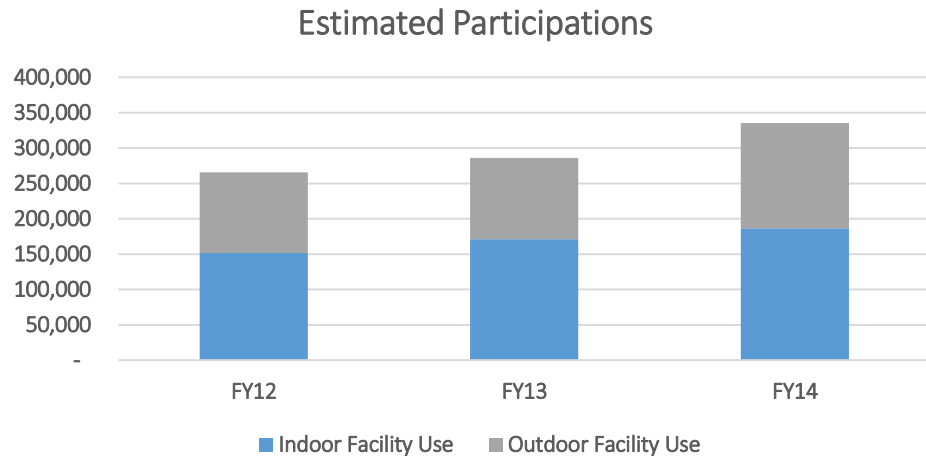
Indoor Facility Use Includes:

- Track
- 1-2 Basketball
- Theater
- Art Classes/Programs
- Teen
- Pass Swipes*
- Camp

Outdoor Facility Use Includes:

- Classes (most are tennis)
- Outdoor Leagues
- Drop-In Sports

*Pass Swipes include Teens, OSAP Exercise, Fitness Members, Clay studio



TJ Participations	FY12	FY13	FY14
Indoor Facility Use	151,672	171,381	186,416
Outdoor Facility Use	113,901	114,629	149,082
Totals	265,573	286,010	335,498

* Participations include all facility visits including new and recurring participants.

Park and Community Center Use ::: Estimated Participations

- Indoor Outdoor Facilities Used Year-round
 - Sport Leagues, Drop-in Play, Youth and Teen Programming
 - Classes, Art Studios/Workshops, and Theater Productions
- FY13 to FY14- Approximately 17% Growth
 - Increased Demand
 - Youth League, Indoor Facilities Drop-in, and Theater Increases
- Continued Demand Anticipated - Nearly Every Area FY12-14 Increase
- Large Uptick in Rectangular Field Use - Increasing Participation in Youth Soccer
- No Theater Participations FY12 – Earthquake
- Diamond Field Use Down FY12 - Field Renovation

Total Outdoor Participations	FY12	FY13	FY14
Rectangular Fields	76,725	66,600	93,750
Diamond Field(s)	11,985	23,715	30,398
Tennis Courts	5,801	4,923	5,544
Playground	19,391	19,391	19,391
Total	113,901	114,629	149,082

Indoor Facility Participations	FY12	FY13	FY14
Camp*	3,271	3,199	3,199
Art	377	625	745
Indoor Leagues	5,380	5,960	6,972
Fitness/Drop-In	130,644	125,597	130,155
Teen	12,000	12,000	12,000
Theater	-	24,000	33,345
Total	151,672	171,381	186,416

*Camp pending FY14 numbers

Park and Community Center Use ::: TJ Facility Users

Organized DPR Programs, Cultural Affairs programs (theater), Arlington Youth Sports Affiliated leagues Drop-in Community Users

DPR Programs	Affiliated User Groups	Other Communities
<ul style="list-style-type: none"> • Youth 1-2 Grade Basketball • Youth Track Program • Summer Camp • Family Skate Night • Teen Afterschool • Teen Sports Night • Teen DJ & TEAM Program • Art Classes, Workshops, Studios • Youth & Adult Tennis Classes • Youth Tennis Leagues • Senior Adult Fitness Program • Community Fitness 	<ul style="list-style-type: none"> • Arlington Soccer Association • Arlington Little League • Arlington Cal Ripken Babe Ruth • Arlington Travel Baseball • Arlington County Tennis Association 	<ul style="list-style-type: none"> • Arlington Middle School Tennis Programs • Arlington Cultural Affairs (Theater) • Potomac Valley Youth Track • Drop-In Outdoor Sports Users (Tennis, Basketball, Soccer, Track, Fitness, Playground)

Park and Community Center Use ::: Facility Revenue

Multiple Revenue Streams – Includes Pass Memberships, Program Fees, Rentals.

- Approximately 8% Increase FY13-14, Approximately 39% Increase FY12-FY13.
- Lower in FY12 - Theater Move Earthquake Damage.
- Rentals and Teen program Largest FY13-14 % Increase
- Followed by Youth Indoor Sport Leagues
- Rental Increase Driven by Tennis Court Rentals
- Field Assessment Fees Paid by Youth Affiliate Leagues Not Included

TJ Revenue Streams	FY12	FY13	FY14
Fitness Memberships	\$ 377,777	\$ 384,261	\$ 385,953
Camps	\$ 60,032	\$ 73,838	\$ 73,838
Outdoor Rentals	\$ 315	\$ 78	\$ 1,693
Classes	\$ 66,044	\$ 62,238	\$ 68,347
Theater	\$ -	\$ 220,000	\$ 262,277
Art	\$ 38,261	\$ 34,815	\$ 30,966
Teen	\$ 29,235	\$ 29,024	\$ 40,180
Indoor Leagues	\$ 55,139	\$ 64,274	\$ 73,111
Total	\$ 626,803	\$ 868,527	\$ 936,363

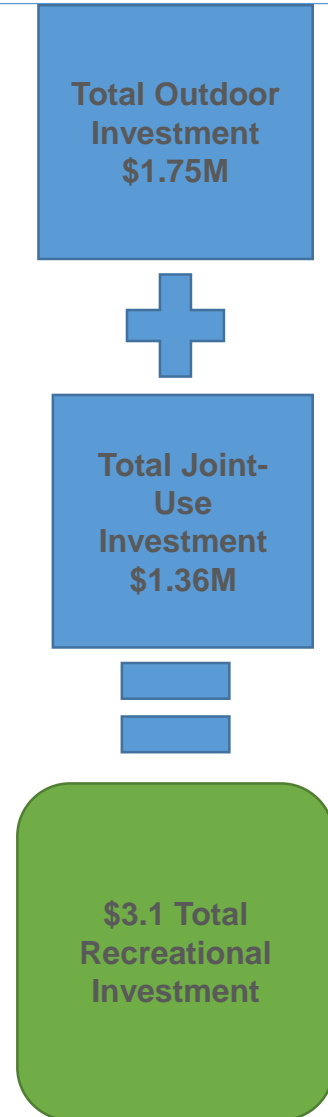
2014 Camp data is pending as a place holder we used FY13

Park/Recreation Investment ::: FY06-FY14

- **Deconstruction Houses S. Irving St.**
- **Lower field synthetic turf, lighting, accessible seating walkways**
- **60' baseball field irrigation, sod, furnishings accessible walkway.**
- **Bermuda sod and irrigation upper field.**
- **Upper field lights**
- **Gym floor, theatre seats & lighting**
- **Synthetic turf (installation/program)**
- **PEG: two benches, water spigot, kiosk**
- **PEG: Four new benches, path, garden design plan**

Park & Recreation Investment ::: FY06-FY14

- Deconstruction Houses S. Irving St.
- Lower field synthetic turf, lighting, accessible seating walkways
- 60' baseball field irrigation, sod, furnishings accessible walkway.
- Bermuda sod and irrigation upper field.
- upper field lights
- Gym floor, theatre seats & lighting
- Synthetic turf (installation/program)
- PEG: two benches, water spigot, kiosk
- PEG: Four new benches, path, garden design plan



TJ Park & Community Center ::: Long Range Planning Documents

- 2005 Public Spaces Master Plan

<http://projects.arlingtonva.us/plans-studies/comprehensive-plan/public-spaces-master-plan/>

- 2008 Arlington Heights Neighborhood Conservation Plan

http://arlingtonva.s3.amazonaws.com/wp-content/uploads/sites/31/2014/02/NC_ArlingtonHeights_Plan.pdf

- National Register of Historic Places - Arlington Heights Historic District

<http://projects.arlingtonva.us/plans-studies/historic-preservation/national-historic-places/>

Park & Community Center Use::: TJ Participant Demographic Analysis

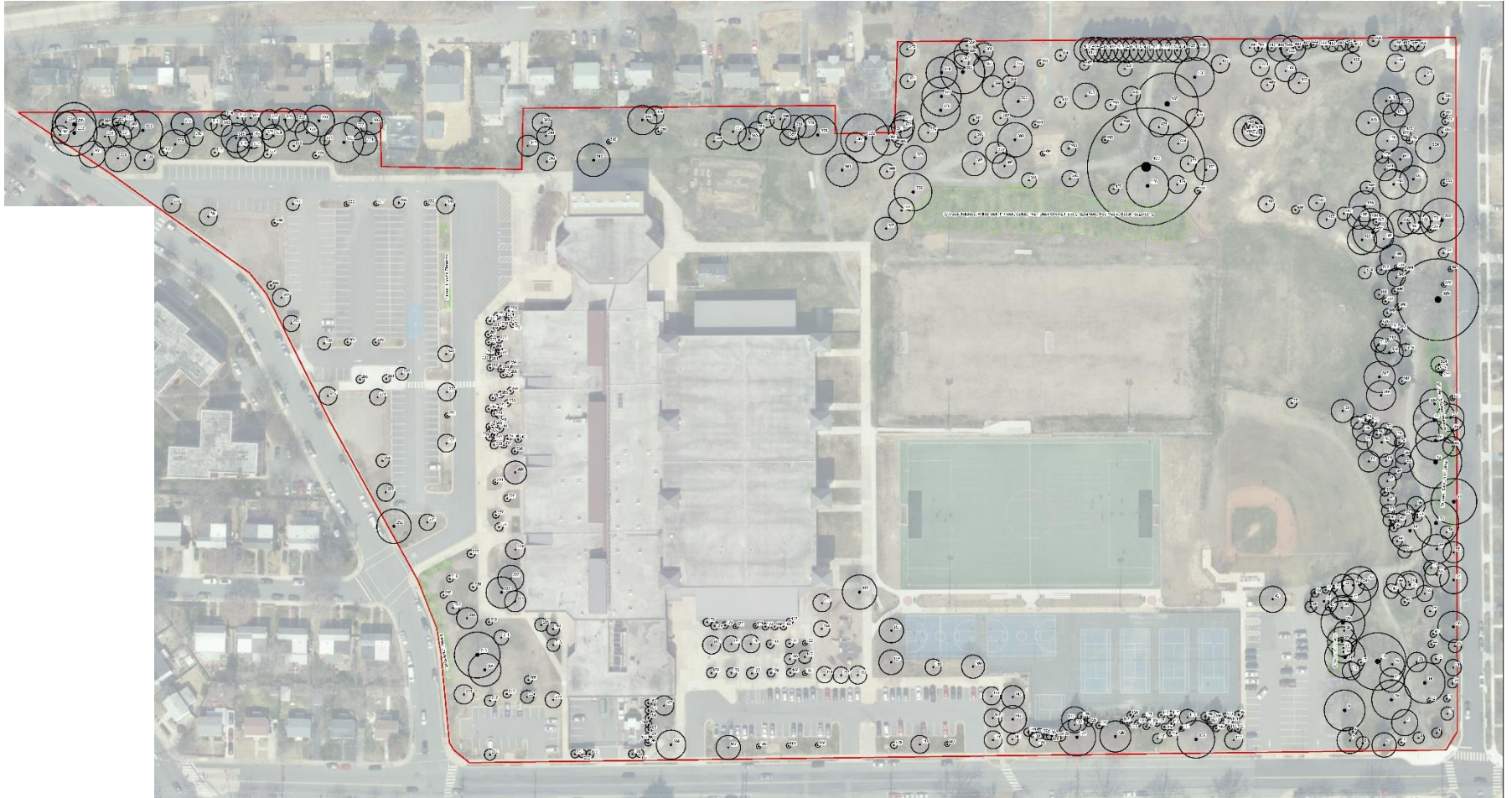
To be updated
Work in progress

TJ Site ::: Natural Resources Inventory

- **Mostly Landscaped Site Including Native Plantings**
- **Some Good Habitat Value**
- **Well Established Invasive Plant Species**
- **Native Trees Most Significant Natural Resource On Site**
 - **Notable Southern Red Oak**
 - **Dwarf Hackberry - County Champion for that species**
 - **Sugarberries Stand**
- **Alexandria Peer Assessment – Awaiting Results**
- **Plantings Could be Recreated, Trees Could Not**

TJ Site ::: Tree Survey

- 538 Trees Larger than 3" Diameter were Inventoried
- Large Stands of Smaller Trees Delineated
- 97 Trees Inventoried as a Wooded Area
- Native Trees Include Oak, Tuliptree, Black Cherry, Black Locust, and Hackberry
- Approximately 10% on County's Invasive Plant List



TJ Park & Community Center ::: Special Events

- **Arlington Home Show & Garden Expo**
 - **Estimated Attendance: 900 – 1,500**

- **April / May: Arlington's ECARE [Environmental Collection And Recycling Event]**
 - **Estimated Attendance: 1,000 – 1,500**

- **Kiwanis Club of Arlington Antique Show**
 - **Estimated Attendance: 2,000**

- **Northern Virginia Senior Olympics**
 - **Estimated Attendance: 150 – 300**

- **Additional events to be added**

TJ Park & Community Center ::: Arlington County Fair

- **Estimated Attendance: 40,000- 50,000**
- **Uses entire Community Center, Park & parking lots.**
- **In total, 12 days are needed to reserve the space for Fair activities.**
- **APS DPR each approximately 5-10 staff On-Site**
- **Multiple Utility Resources Used**
- **Fair Board Chair Indicates Increasing Ride Ticket Sales**
- **Anticipated Fair Income Increase**
- **590 Total Parking Spaces are Needed**
- **5K race added in 2013 Fair/FitArlington**