

## Transportation::: Public Transit Service in Vicinity

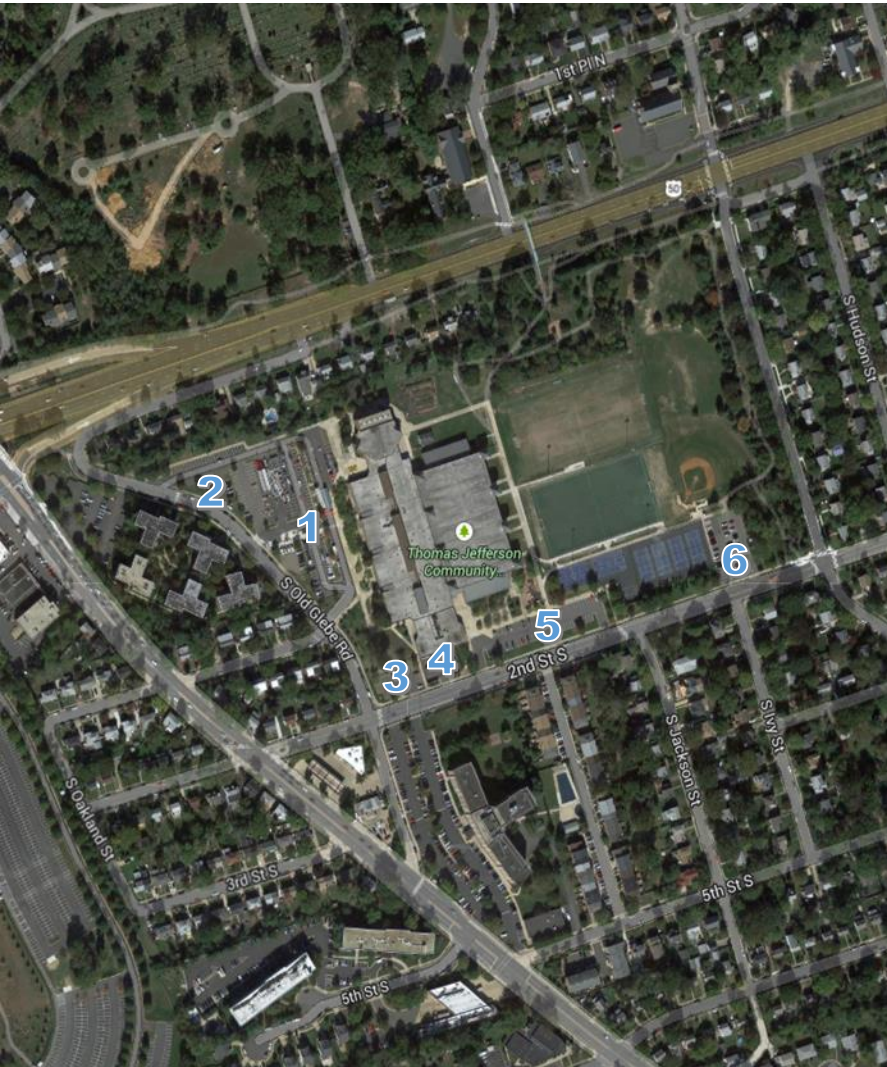


- **ART 41 -**  
S. Glebe Rd (Columbia Heights West to Court House)  
61 trips/direction/weekday
- **Metrobus 4AH -**  
Arlington Boulevard (Seven Corners to Rosslyn)  
31 trips/direction/weekday
- **Metrobus 10B -**  
S. Glebe Road & 2<sup>nd</sup> Street S. (Hunting Towers to Ballston)  
36 trips/direction/weekday
- **Metrobus 23AC -**  
S. Glebe Road (Crystal City Ballston)  
58 trips/direction/weekday

# Transportation ::: Public Transit Stop Locations & Use

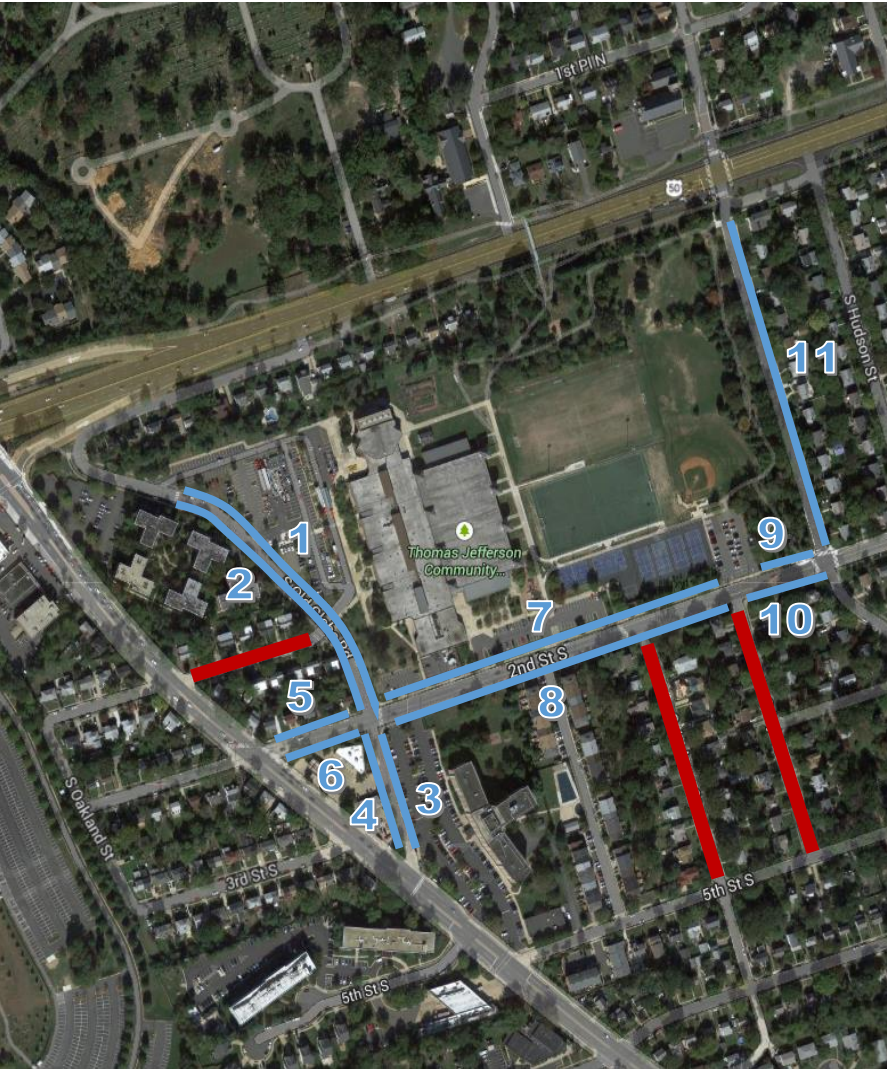


# Transportation::: Parking Lot Capacity and Occupancy



Public Parking Lots	Location	Capacity	Occupancy on Friday 9/05 8:30 – 8:50 AM	Occupancy on Monday 9/08 5:00 – 5:15 PM	Occupancy on Wednesday 9/10 Noon-12:15PM	Occupancy on Wednesday 9/17 7:55 – 8:10 AM
Old Glebe Rd Paved	1	186	104 (56%)	35 (19%)	98 (53%)	104 (56%)
Old Glebe Rd Pervious	2	27	11 (41%)	1 (4%)	12 (45%)	13 (48%)
Old Glebe Rd Corner	3	18	7 (39%)	6 (33%)	10 (56%)	10 (56%)
School Service	4	6	5 (83%)	3 (50%)	6 (100%)	9 (150%)
Second Street near Community Center	5	63	47 (75%)	37 (59%)	42 (67%)	39 (62%)
Second Street East End	6	60	2 (3%)	4 (7%)	3 (5%)	5 (8%)
<b>Totals</b>	-	360	176 (49%)	86 (24%)	171 (48%)	180 (50%)

# Transportation ::: On-Street Parking Capacity, Occupancy & Permit Zones



On-Street Parking Spaces	Location	Capacity	Occupancy on Friday 9/04 8:30 to 8:45 AM	Occupancy on Monday 9/08 5:00 to 5:15 PM	Occupancy on Wednesday 9/10 Noon -12:15 PM	Occupancy on Wednesday 9/17 7:55 – 8:10 AM
100 Block Old Glebe Road – school side	1	29	18 (62%)	19 (66%)	13 (45%)	16 (55%)
100 Block Old Glebe Road – residence side	2	31	22 (71%)	15 (48%)	15 (48%)	20 (65%)
200 Block Old Glebe Rd.- residence side	3	14	11 (79%)	9 (64%)	10 (71%)	12 (86%)
200 Block Old Glebe Rd. – commercial side	4	3	2 (67%)	3 (100%)	3 (100%)	3 (100%)
3600 Block 2nd Street – residence side	5	7	4 (57%)	4 (57%)	2 (28%)	5 (71%)
3600 Block 2 <sup>nd</sup> Street – commercial side	6	2	1 (50%)	1 (50%)	2 (100%)	3 (150%)
3300 -3500 Block 2 <sup>nd</sup> Street – park side	7	25	10 (40%)	6 (24%)	12 (48%)	9 (36%)
3300-3500 Block 2 <sup>nd</sup> St. - residence side	8	25	17 (68%)	12 (48%)	11 (44%)	18 72%
3200 Block 2 <sup>nd</sup> Street – park side	9	4	0 (0%)	0 (0%)	0 (0%)	0 (0%)
3200 Block 2 <sup>nd</sup> Street – residence side	10	4	2 (50%)	2 (50%)	1 (25%)	1 (25%)
100 Block S. Irving Street- residence side	11	27	2 (8%)	3 (11%)	2 (8%)	5 (19%)

**— Zone 2 Residential Permit Parking Only (M-F 8AM to 5PM)**

# Transportation::: Pedestrian Bridge Counts



<u>Pedestrian Count Date:</u>	<u>Daily Pedestrian Volumes</u>
Tuesday, August 26, 2014	359
Wednesday, August 27, 2014	356
Thursday, August 28, 2014	350
Friday, August 29, 2014	318
Saturday, August 30, 2014	291
Sunday, August 31, 2014	176
Monday, September 01, 2014	368
Tuesday, September 02, 2014	443
Wednesday, September 03, 2014	547
Thursday, September 04, 2014	509
Friday, September 05, 2014	420
Saturday, September 06, 2014	260
Sunday, September 07, 2014	497

Key:

Weekdays - School Out Off Session

Weekdays - School In Session

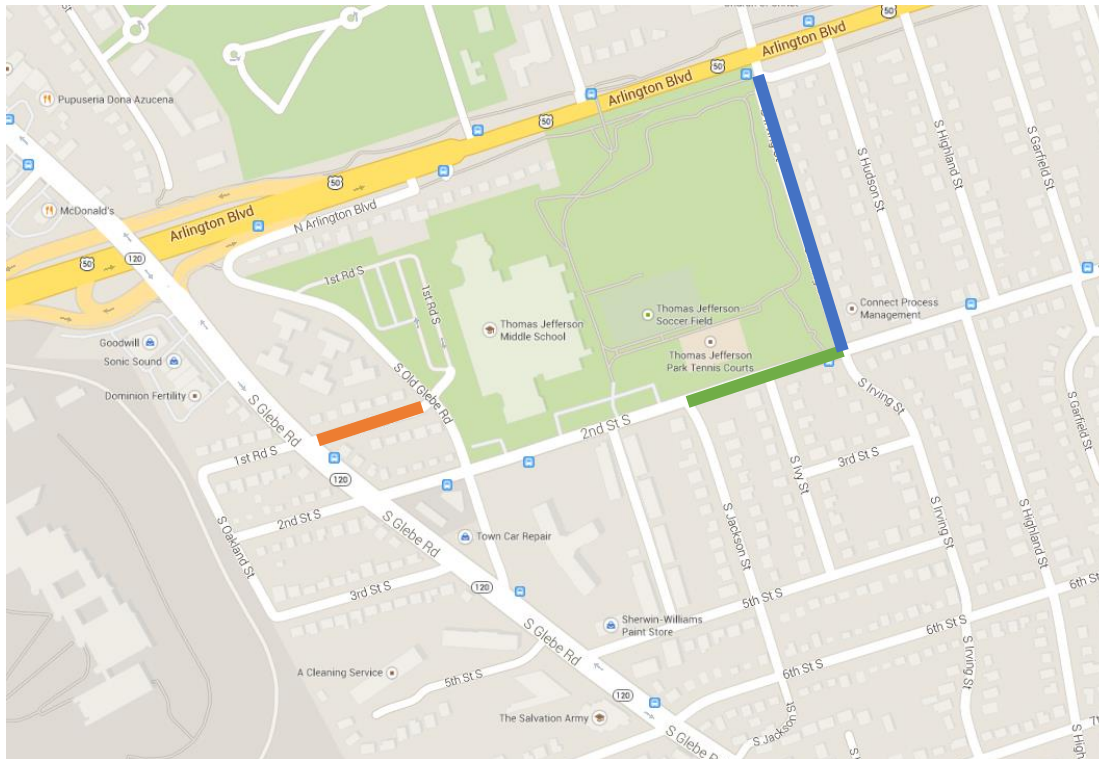
Weekends/Holidays

# Transportation ::: Traffic Counts

1<sup>st</sup> Road South, between S Glebe Rd and Old Glebe Rd – 667 vehicles per day  
(May 30 & 31, 2012)

2<sup>nd</sup> Street South, between S Jackson St and S Irving St – 5,981 vehicles per day  
(June 11 & 12, 2014)

South Irving Street, between Arlington Blvd and 2<sup>nd</sup> Street S – 2,359 vehicles per day  
(December 11 & 12, 2012)



# Transportation ::: Crash Data

---

## Reported Crashes in Past Three Years (2011-13):

- S. Glebe Road & 1st Road S. = 7
- S. Glebe Road & 2<sup>nd</sup> Street S. = 23 \*\*\*\*^
- Old Glebe Road & 1<sup>st</sup> Road S. = 1
- Old Glebe Road & 2<sup>nd</sup> Street S. = 4 \*^
- 2<sup>nd</sup> Street S. & S. Irving St. = 2
- 2<sup>nd</sup> Street S. & S. Highland St. = 2 \*
- 2<sup>nd</sup> Street S. & S. Ivy Street = 1
- 2<sup>nd</sup> Street S. & S. Fillmore St. = 10
- Arlington Blvd. & S. Irving St. = 13

Key: \* - involved pedestrian, ^ - involved bicyclist