

Arlington County Fire Department


Fire Station #10

Western Rosslyn Area Planning Study
Working Group Meeting
September 9, 2014


Fire Station #10 – Current Uses

Current Uses	Number of Staff Needed
Engine Company	4
Medic Unit	2
Technical Rescue Tractor Trailer	Unstaffed – in use as needed
Reserve Transport Unit (Ambulance)	Unstaffed

- **Future Capacity:** Other unstaffed or staffed resources may be relocated in future years




Technical Rescue Vehicle



Engine Vehicle

2



Fire Station #10 Service Area



3



Siting and Design Requirements

- Interior space will be similar to FS #3 and FS #5
 - Program requires ~15,100 square feet
 - 4 vehicle bays
 - Bay door openings – 14 feet tall
 - Design must allow for “Safe Haven” concept
- Additional Space & Design Criteria
 - Parking for up to 20 cars
 - ✓ Shifts overlap
 - ✓ Staffing can fluctuate
 - Min. of one drive-thru apparatus bay
 - Min. of a 45' front or rear apron so apparatus can be outside
 - Turning radius appropriate to enter/exit
 - Noise attenuation if built within mixed-use building

FS #3
(Lee Hwy)



FS #5
(Aurora Highlands)



4

Siting and Design Considerations

- Private development or school drop-off / pick-up lanes should not interfere with Fire Station entrance/exit
- Station can be co-located within a commercial or residential high-rise building with separate entrances
- Prefer prominent location

5



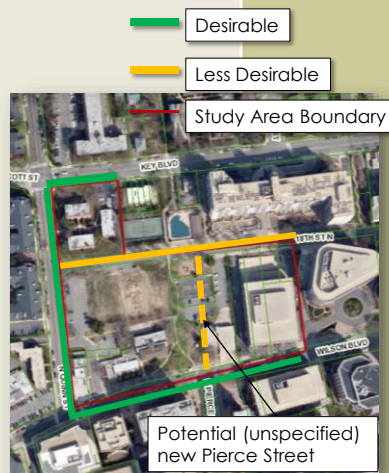
Siting Considerations & Preferences

Factors that influence Fire Response:

- Access to arterial street
- Interference from adjacent uses
 - Vehicles
 - School buses / school drop off
 - Pedestrians
 - Students
- Street width
- Turn radii

Siting Preferences (Egress)

1. Wilson Blvd frontage
2. Quinn Street frontage
3. Key Blvd Frontage



6



Fire Station Siting – Past Constraints

Recent Fire Station Projects



Fire Station #5 – Aurora Highlands



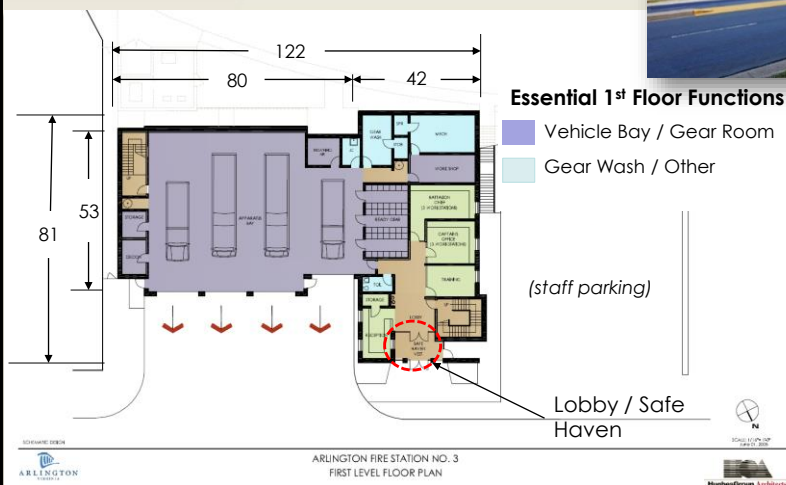
Fire Station #3 – Old Dominion Dr

- Fire Station #5:
 - site had space to allow bay drive-through layout

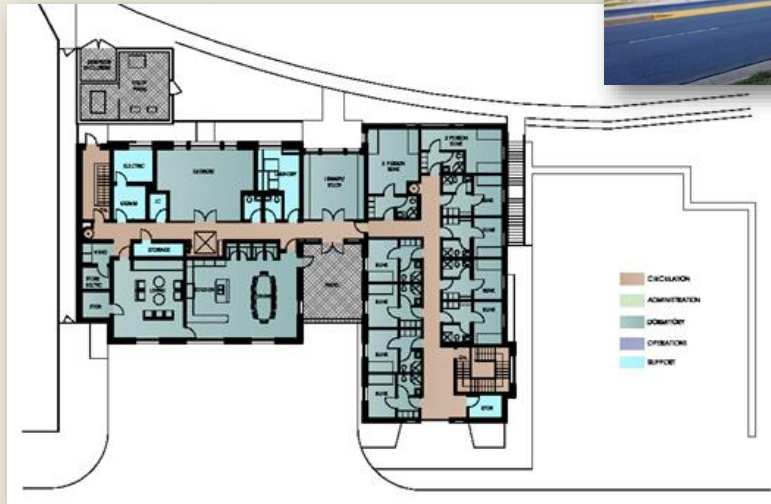
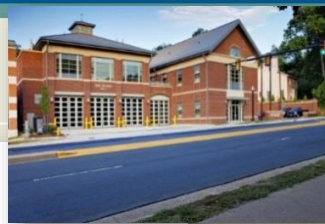
- Fire Station #3 –
 - land swap with adjacent property owner limited space
 - back of station next to 21st Street North
 - no room for drive-through



Floor Plan – Fire Station #3



Floor Plan – Fire Station #3



9

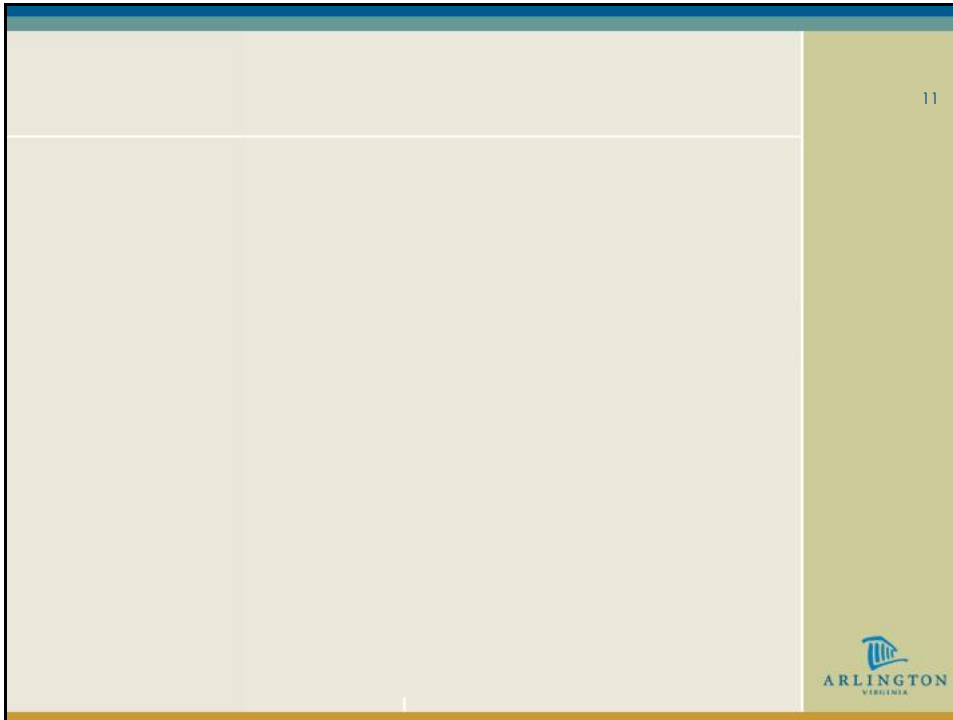
Summary

10

- ACFD Requirements
 - ~15,100 square feet
 - 4 vehicle bays (at least 1 pull thru)
 - Bay door openings – 14 feet tall
 - Design must allow for “Safe Haven” concept
 - 45-foot apron (front or back)
 - Noise attenuation, if co-located in mixed-use bldg

- ACFD Preferences
 - Frontage on Wilson, Quinn or Key
 - Prominent location

- Flexibility



WRAPS Working Group Considerations

- Location of fire station
 - Stand alone?
 - Co-location?

- Transportation network
 - Circulation / emergency access
 - Points of conflict

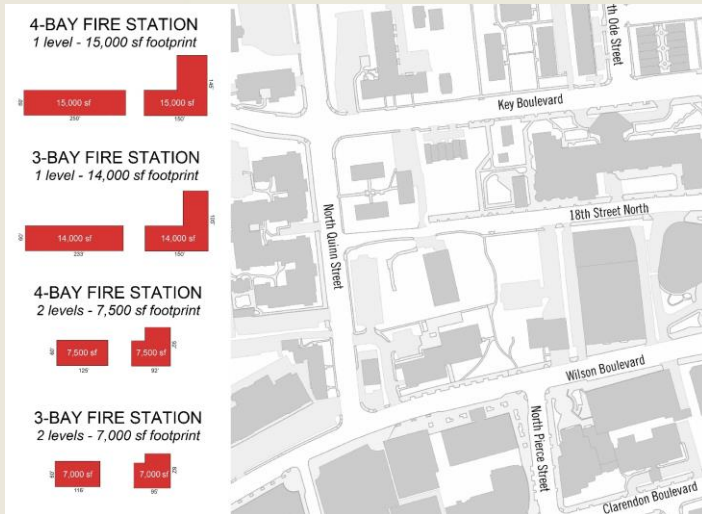
- Phasing

12

ARLINGTON
VIRGINIA

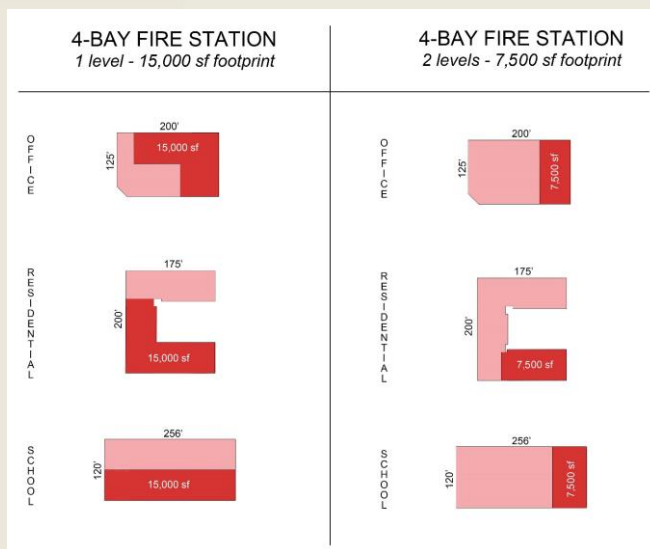
Floor Plan Options – Fire Station #10

13



Floor Plan Options – Fire Station #10

14



Floor Plan Options – Fire Station #10

15

