

Thomas Jefferson Working Group Meeting, November 20, 2014

Guide Sheet for Display Boards

The Toole Design Group team has developed a series of display boards in response to requests for additional information by Working Group members at the November 10 meeting. These boards are available for Working Group members to review during the November 20 meeting. Smaller versions of each board are also included with this handout.

Request 1: Be specific about parent drop off/pick-up and bus pick-up/drop-off, i.e., detail on the sketches.

Please refer to information from VMDO.

Request 2: Provide specific answer to some of the traffic calming and safety measure in and around the site, especially with regard to walkers and impacts on bikes and vehicular traffic.

We have developed three boards:

- *Board 1 – DRAFT Transportation Infrastructure Recommendations New TJ Campus, shows recommended improvements for adjacent streets as well as other improvements near the school. This board includes an inset of four walking routes we identified and assessed, Page 2*
 - *Board 1 supplement: Detail of intersection improvements for 2nd Street S & Old Glebe Rd and for Old Glebe Rd and 1 Rd St/School driveway entrance, Page 3*
- *Board 2 – Transportation, Education, and Recreational Facilities. This board shows current County plans for multi-modal improvements to streets within the Thomas Jefferson walk zone, locations of recommendations shown on Board 1, and locations of parents' concerns drawn from the spring 2014 parent survey, Page 4*
- *Board 3 – Current and Future School Travel Patterns, Page 5. This board shows current and future enrollment, bell times and instructional blocks, and travel modes for*
 - *Thomas Jefferson Middle School and a new elementary school on the TJ site*
 - *Patrick Henry Elementary School and the Career Center/Arlington Mill School and*

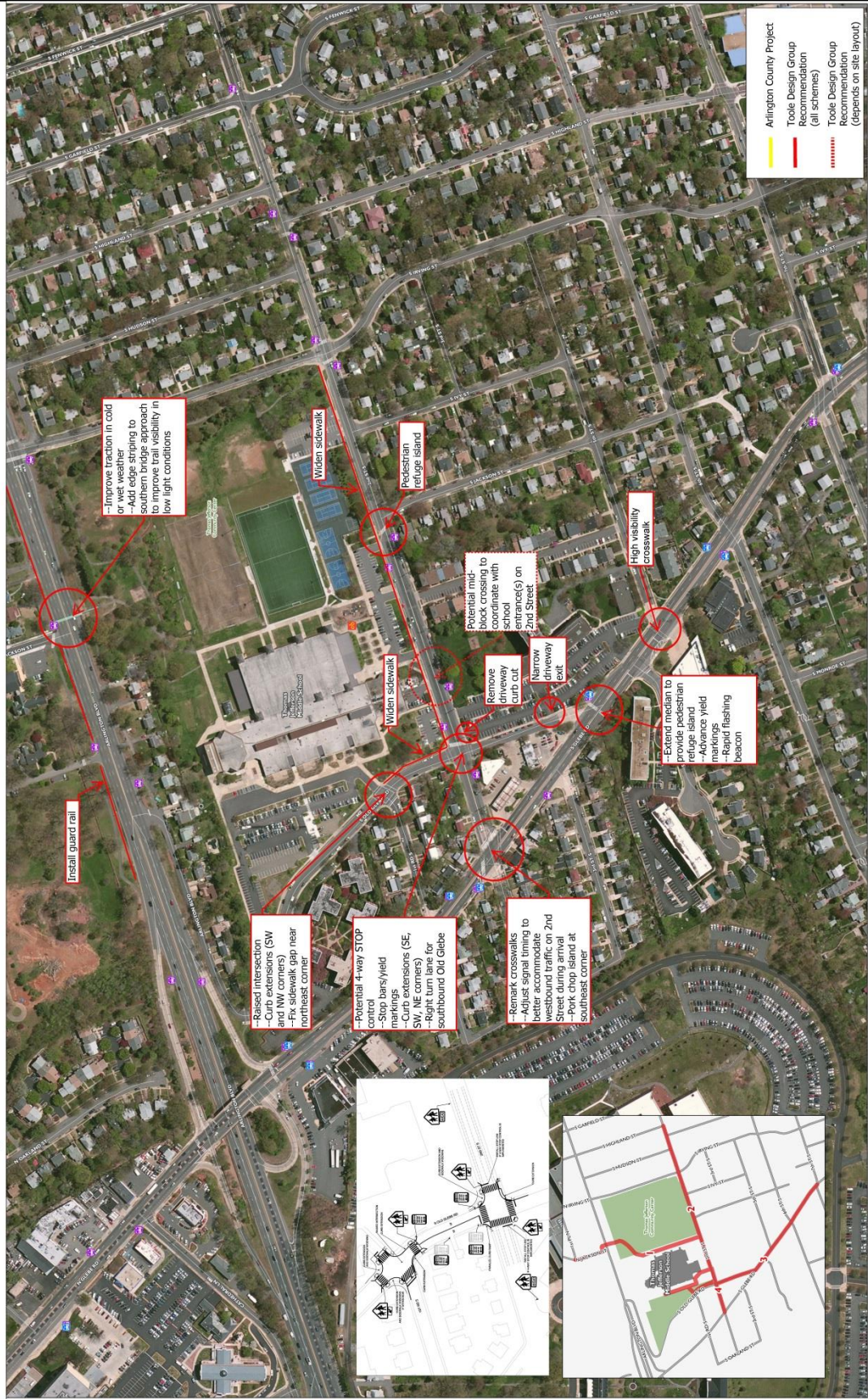
Request 3: Provide more detailed information about the nuances regarding a choice school vs a neighborhood school (i.e., # of riders, walkers, parent drop offs, etc.) and the impacts on the site.

We have developed two boards:

- *Board 4 – New elementary school mode split by type of school, page 6*
- *Board 5– New elementary school number of pedestrian, bicyclists, and motor vehicles during peak hour for arrival and dismissal, page 7*

DRAFT Transportation Infrastructure Recommendations Near TJ Campus

Board 1



Arlington Public Schools

Safe Routes to School

Thomas Jefferson Middle School
DRAFT Transportation Infrastructure Recommendations near TJ Campus

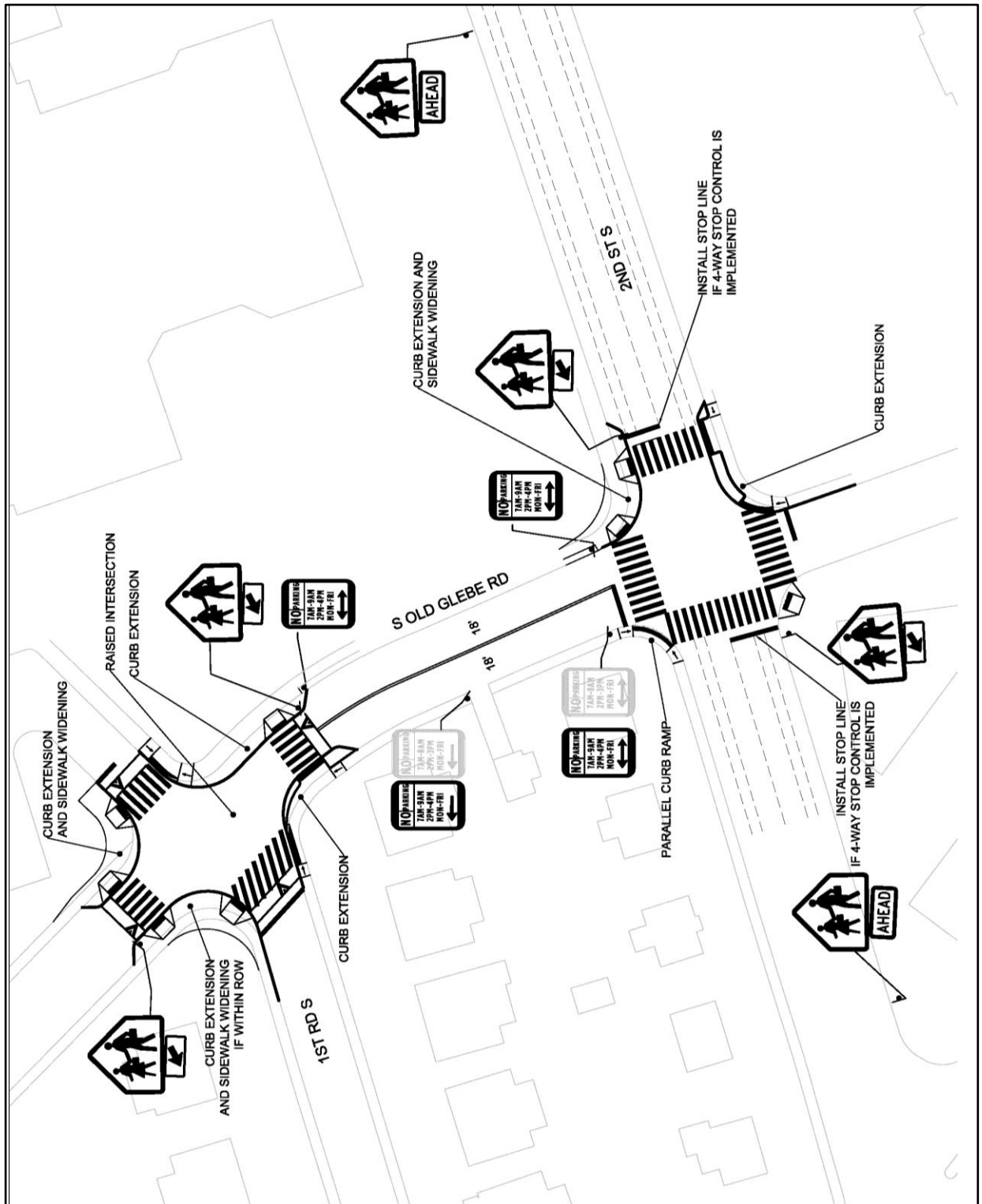
Arlington County Project
Toole Design Group Recommendation (all schemes)
Toole Design Group Recommendation (depends on site layout)

Facilities

- Capital Bike Share Station
- Art Bus Stops
- Microbus Stops
- Jefferson Middle School Walk Boundary

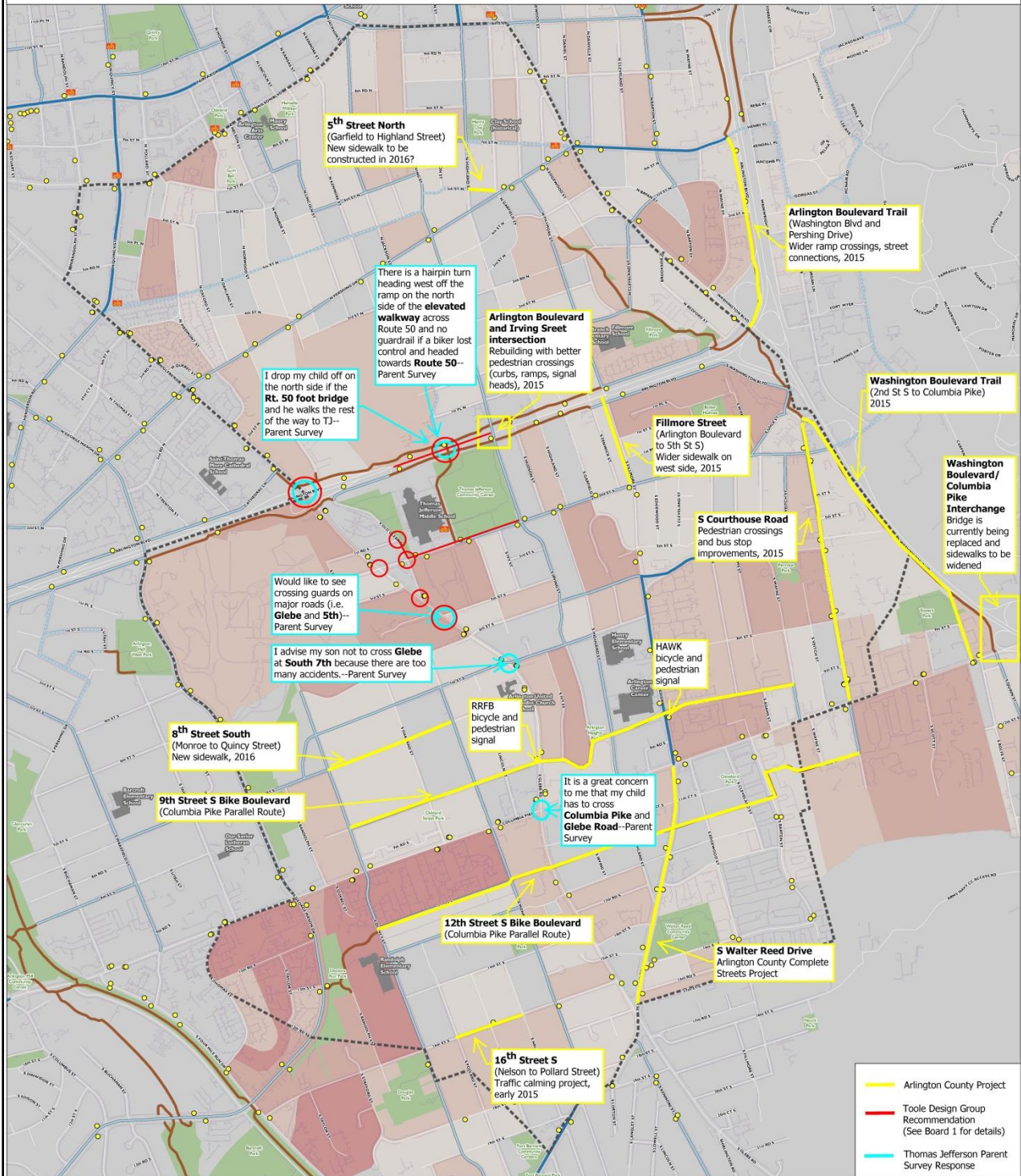
Walk Routes

Board 1 Supplement: Potential Intersection improvement details



General Transportation, Education & Recreational Facilities

Board 2



Arlington Public Schools

Safe Routes to School

Toole Design Group

Thomas Jefferson Middle School
General Transportation, Education, & Recreational Facilities

Facilities

- Capital Bus Stop Station
- Bus Stop
- Bus Lane
- Off Street Trail
- Other On Street Route
- Recommended Route
- Jefferson Public School/Work Boundary

Attendance (Cross Street)

- 1-2
- 3-4
- 5-10
- 11-20
- 21-30
- 31-40

Other

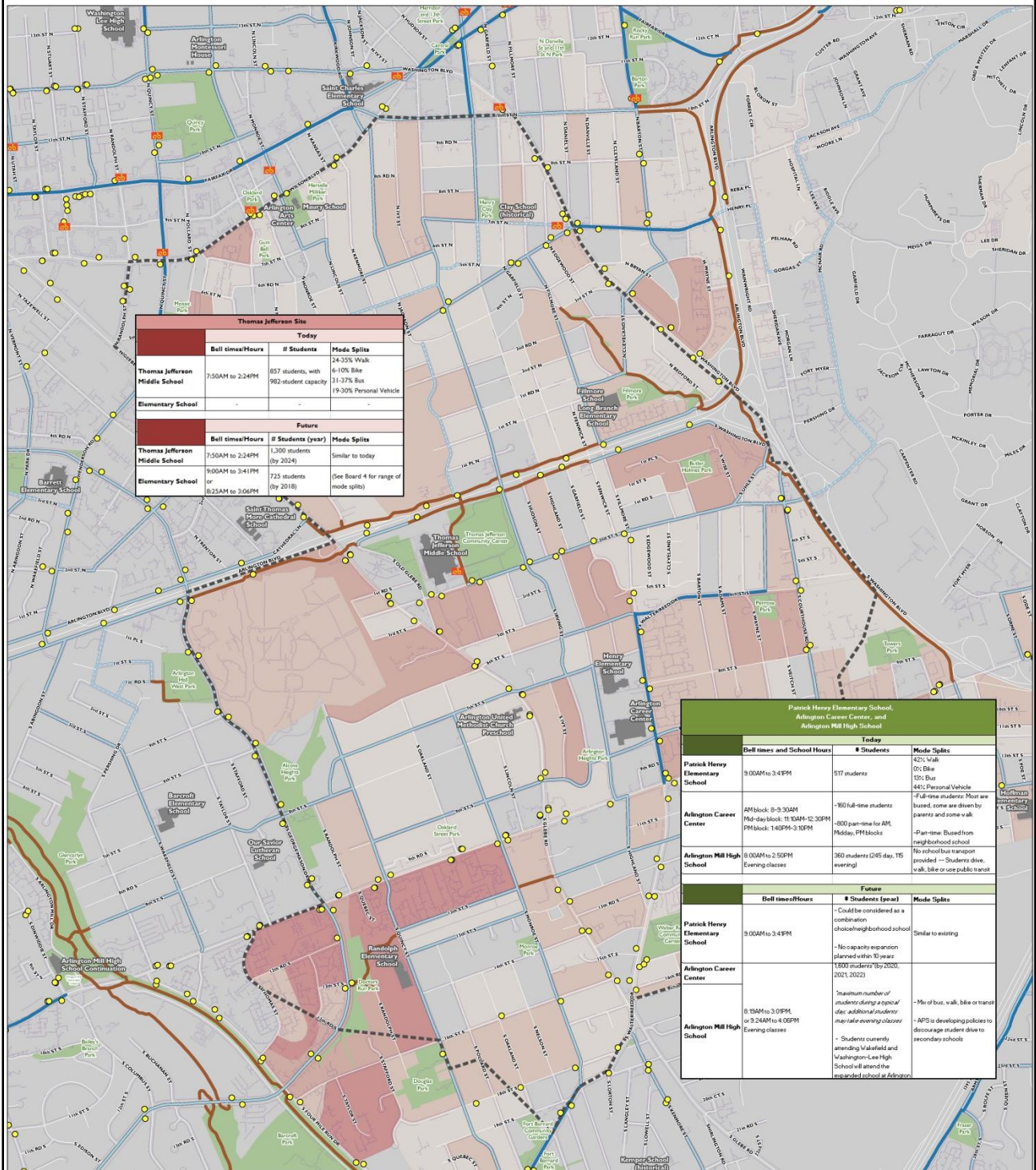
- Red Line
- Park
- Trail

Scale: 0 0.1 0.2 0.4 Miles

North Arrow

Current and Future School Travel Patterns

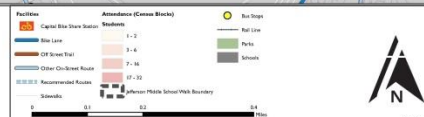
Board 3



Safe Routes to School



Thomas Jefferson Middle School
Current and Future School Travel Patterns



Mode Split in Current APS Elementary Schools (by students)

Board 4

The following pie charts illustrate the range of mode splits at schools throughout Arlington County.

	Walk	Bike	School Bus	Personal Vehicle	Carpool	Transit	Other
Choice: Countywide Arlington Traditional School, Drew Model School, Tuckahoe Elementary School	3-6%	1%	67-77%	19-26%	0%	0%	0%
Choice: Area Arlington Science Focus School, Campbell Elementary School, Claremont Immersion Elementary School, Key Immersion School	7-13%	0-1%	54-62%	18-38%	0-2%	0-1%	0-1%
Similar Neighborhood Ashlawn Elementary School, Glebe Elementary School, Long Branch Elementary School, McKinley Elementary School, Nottingham Elementary School, Tuckahoe Elementary School	16-37%	1-5%	29-57%	23-38%	0-1%	0%	0%



Safe Routes to School



Thomas Jefferson Middle School
 Thomas Jefferson Site Assessment

Mode Split in Current APS Elementary Schools (by students)

Number of motor vehicles, walkers, and bicyclists during arrival and dismissal

Board 5

	Arrival	Dismissal	
Choice: Countywide	Cars (students):	138 (in & out)	152 (in & out)
	Cars (staff):	32 (in)	23 (in)
	Buses:	18* (in & out)	18* (in & out)
	TOTAL (motor vehicles):	188	193
	Pedestrians:	22	22
	Bicyclists:	~5	~5
Choice: Area	Cars (students):	247 (in & out)	203 (in & out)
	Cars (staff):	32 (in)	23 (in)
	Buses:	14* (in & out)	14* (in & out)
	TOTAL (motor vehicles):	293	240
	Pedestrians:	44	36
	Bicyclists:	~5	~5
Similar Neighborhood Schools	Cars (students):	225 (in & out)	203 (in & out)
	Cars (staff):	32 (in)	23(out)
	Buses:	9* (in & out)	9* (in & out)
	TOTAL (motor vehicles):	266	235
	Pedestrians:	160	123
	Bicyclists:	~10	~10

Notes:

- *Actual # of buses based on current number of buses at comparable schools and conversations with APS transportation staff. Actual number of buses may vary depending on bus routing and scheduling.
- 1. Total # of motor vehicles is for all three elementary school types is similar to or less than the at-capacity middle school number during arrival peak hour. During dismissal, more vehicles would travel to and from an elementary school than a middle school; however, elementary school dismissal occurs at a time when there is less traffic on surrounding roads.
- 2. All values are approximate. Numbers will vary based on attendance boundary, bus eligibility, transportation demand management, etc.



Thomas Jefferson Middle School
Thomas Jefferson Site Assessment

Number of motor vehicles, walkers, and bicyclists during arrival and dismissal