

WILSON SITE

ARLINGTON PUBLIC SCHOOLS - FEASIBILITY STUDY

WRAPS

December 08, 2014

LEO A DALY |  | BIG

Superintendent's Recommendation for Wilson Site

Proposed Program	Seats	Low Cost	High Cost
H-B Woodlawn	775		
Stratford			
Pre-K	125		
Total	900	\$85,300,000	\$90,700,000

- **91 parking spaces estimated based on TDM scenario.**
- **11 current buses for H-B Woodlawn.**
- **Personal Vehicle: current 25% at H-B Woodlawn; 15% with TDM scenario.**
- **165,000 GSF.**

BUILDING ORIENTATION

BUILDING ALONG 18TH ST.

BUILDING ORIENTATION



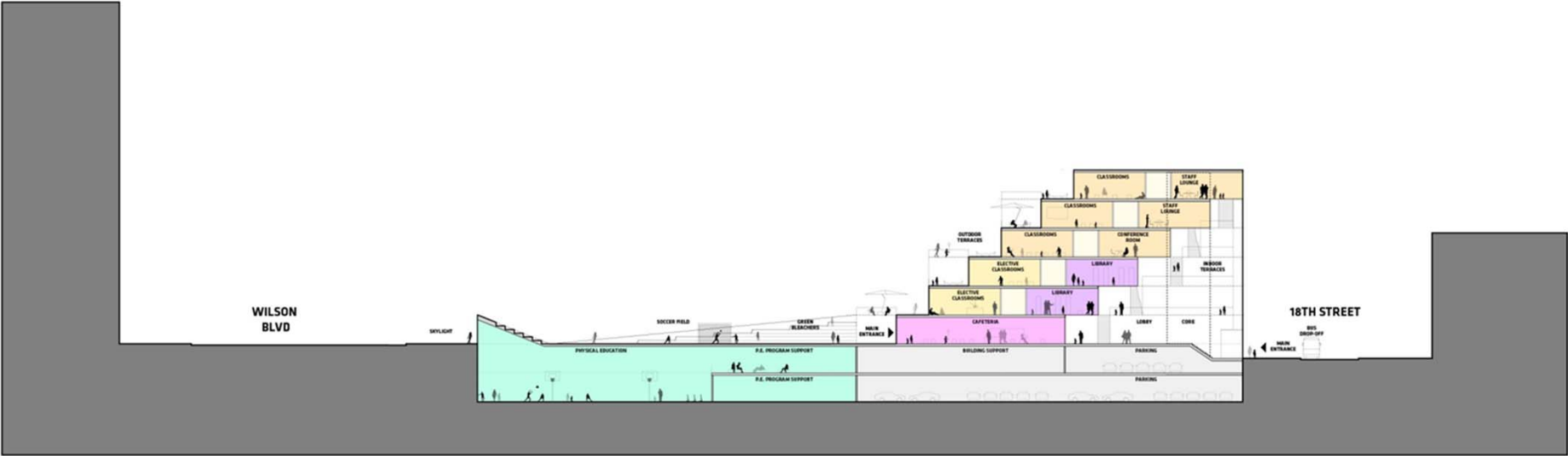
BUILDING ALONG WILSON BLVD.

BUILDING ORIENTATION



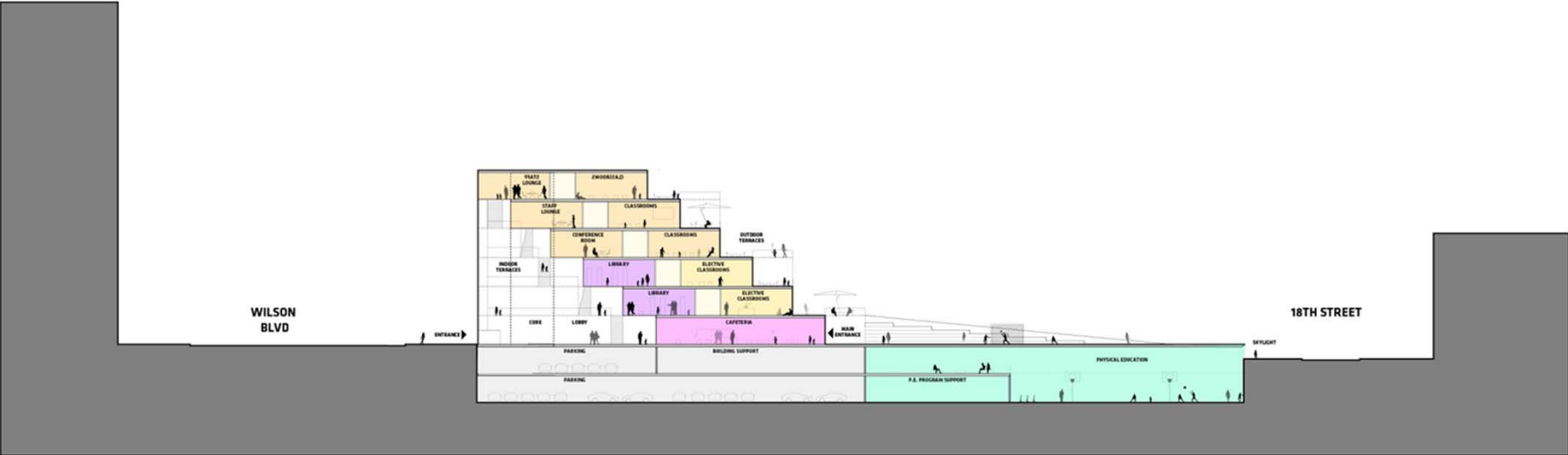
BUILDING ALONG 18TH ST.

BUILDING ORIENTATION



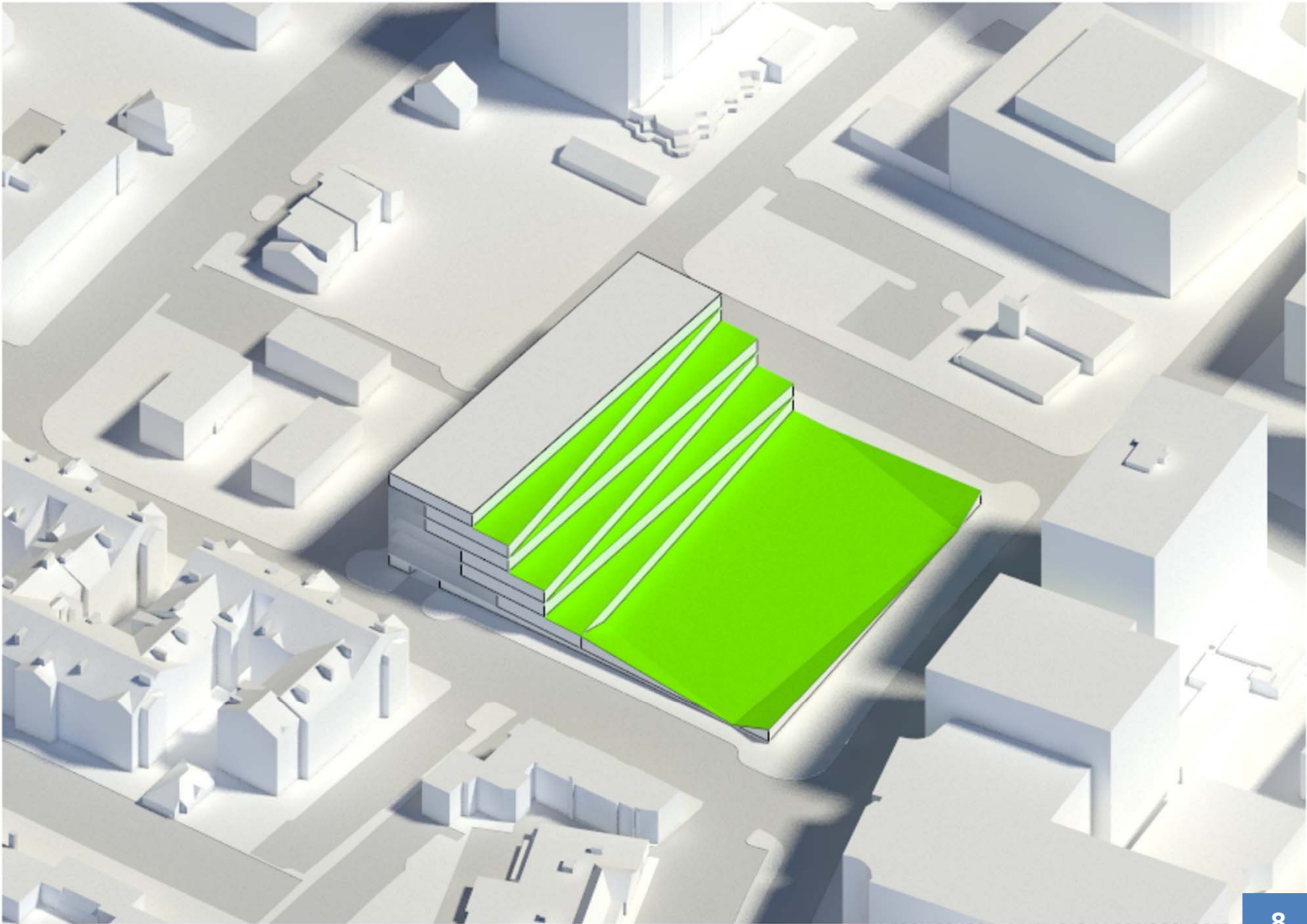
BUILDING ALONG WILSON BLVD.

BUILDING ORIENTATION



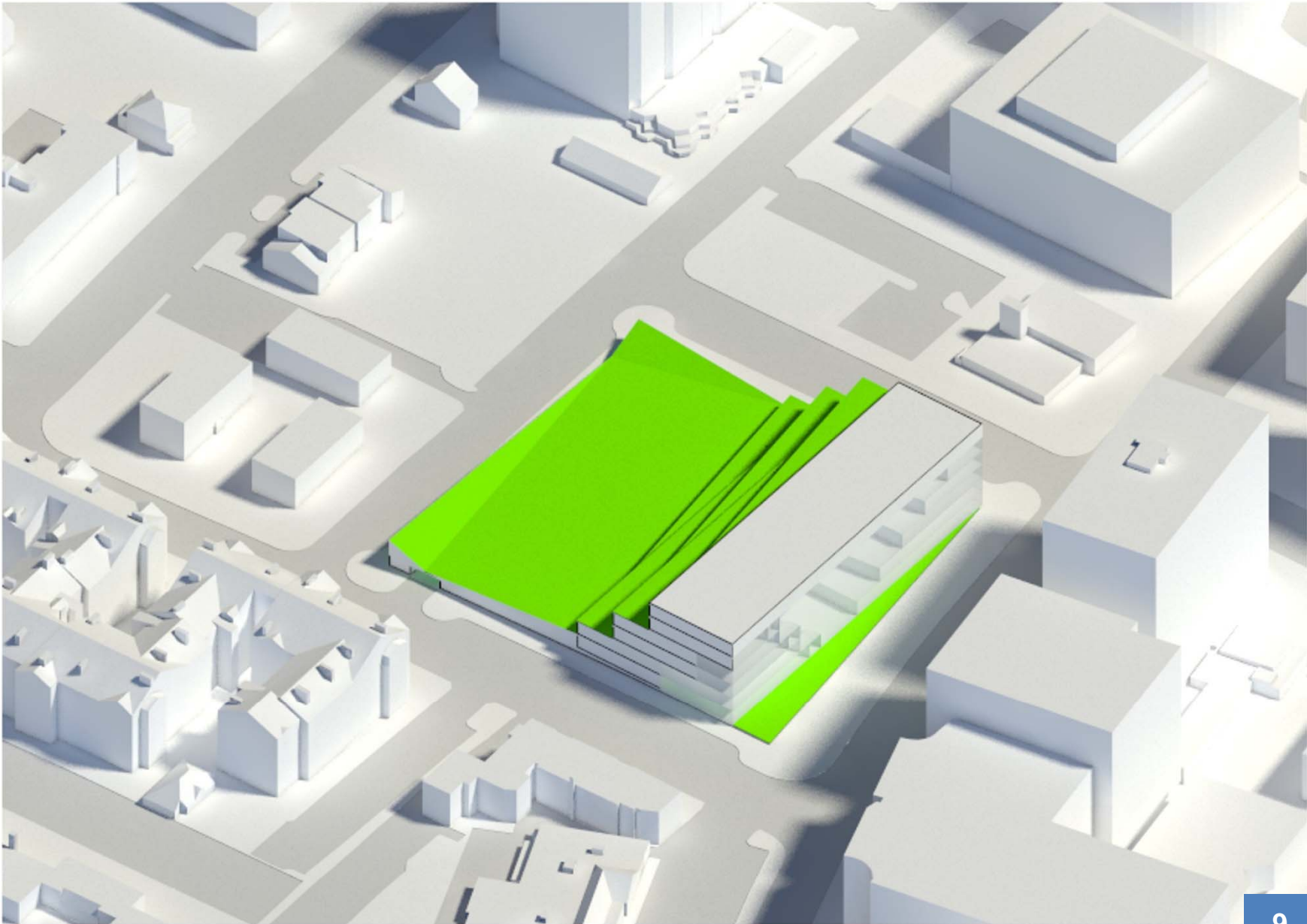
BUILDING ALONG 18TH ST.

BUILDING ORIENTATION



BUILDING ALONG WILSON BLVD.

BUILDING ORIENTATION



BUILDING ALONG 18TH ST.

BUILDING ORIENTATION



VIEW FROM WILSON & QUINN

BUILDING ALONG WILSON BLVD.

BUILDING ORIENTATION



VIEW FROM WILSON & QUINN



View into Gymnasium from Corner of Pierce Street and Wilson Boulevard

COMPONENT SYSTEMS

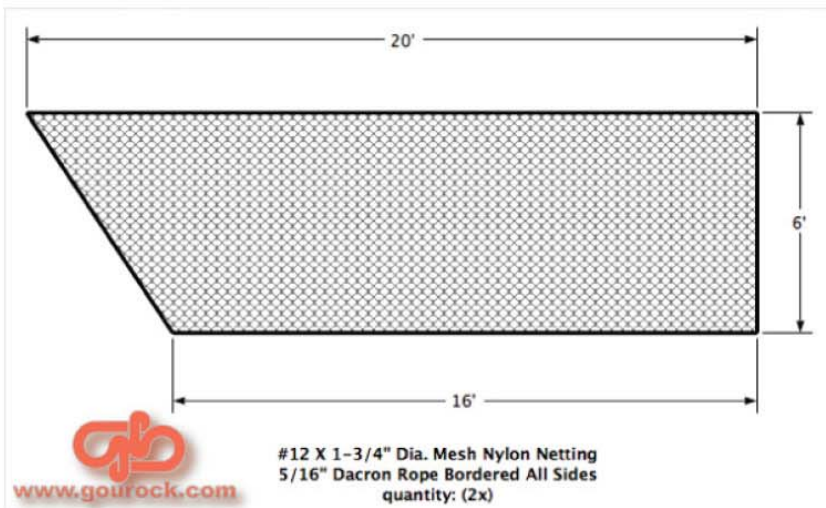
FIELD ENCLOSURE



NET AND POST SYSTEM



DRIVING RANGE



MANUFACTURER OF CUSTOM NETTING PANELS

2

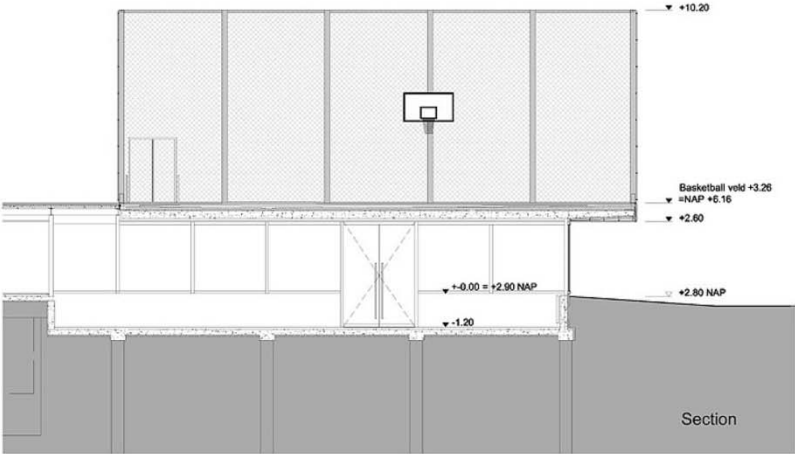


CITY SOCCER FIELD

BASKETBAR, NETHERLANDS

NL ARCHITECTS

FIELD ENCLOSURE



WILSON SITE - ENCLOSURE PLAN

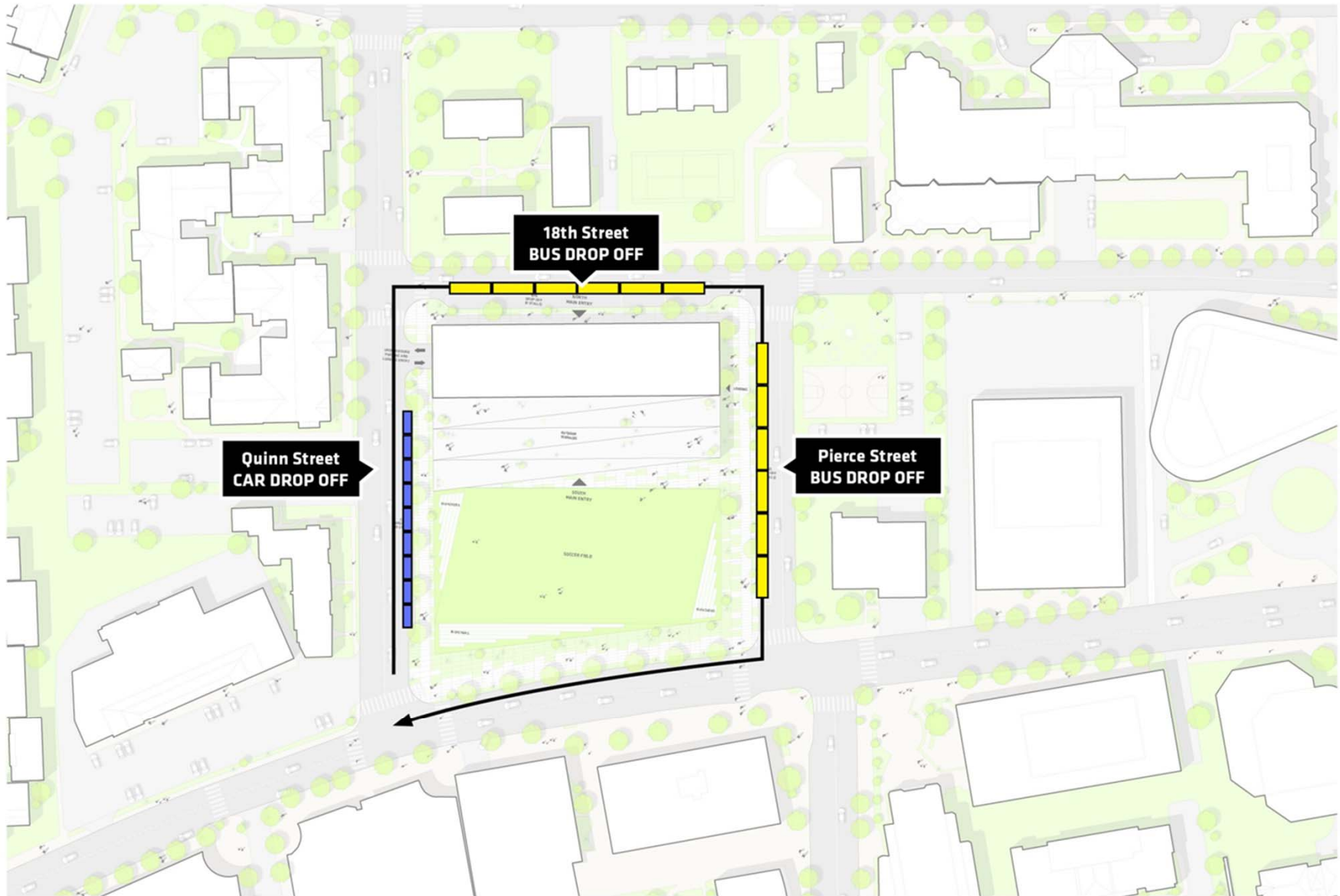
FIELD ENCLOSURE



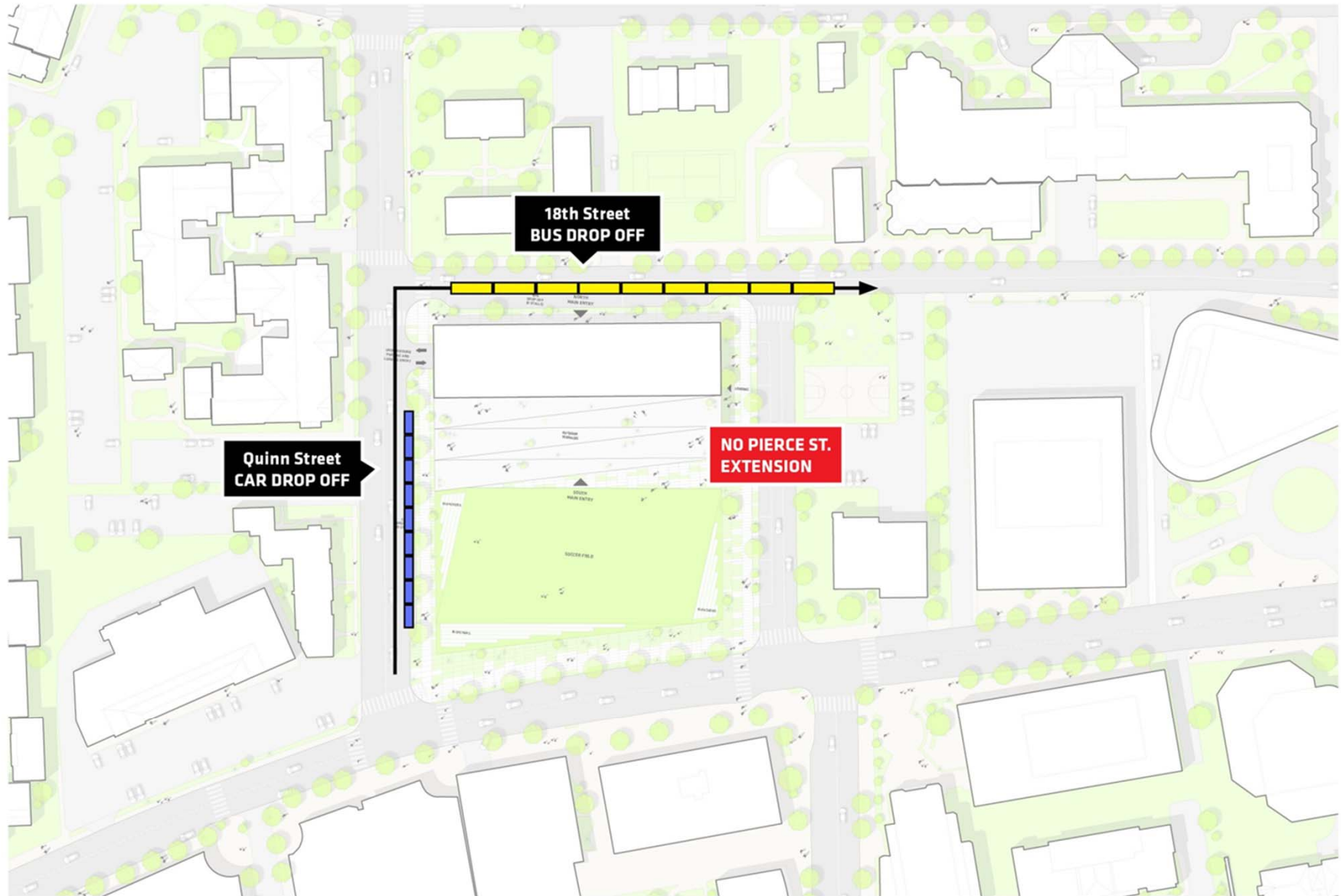
DROP OFF SCENARIOS

PREFERRED OPTION: BUSES ALONG 18TH AND PIERCE ST EXTENSION

DROP OFF SCENARIOS



OPTION1A: BUSES ALONG 18TH



OPTION1B: BUSES ALONG 18TH

