

# 4040 Wilson - Mixed Use Building

SPRC 2 - 26 May 2016



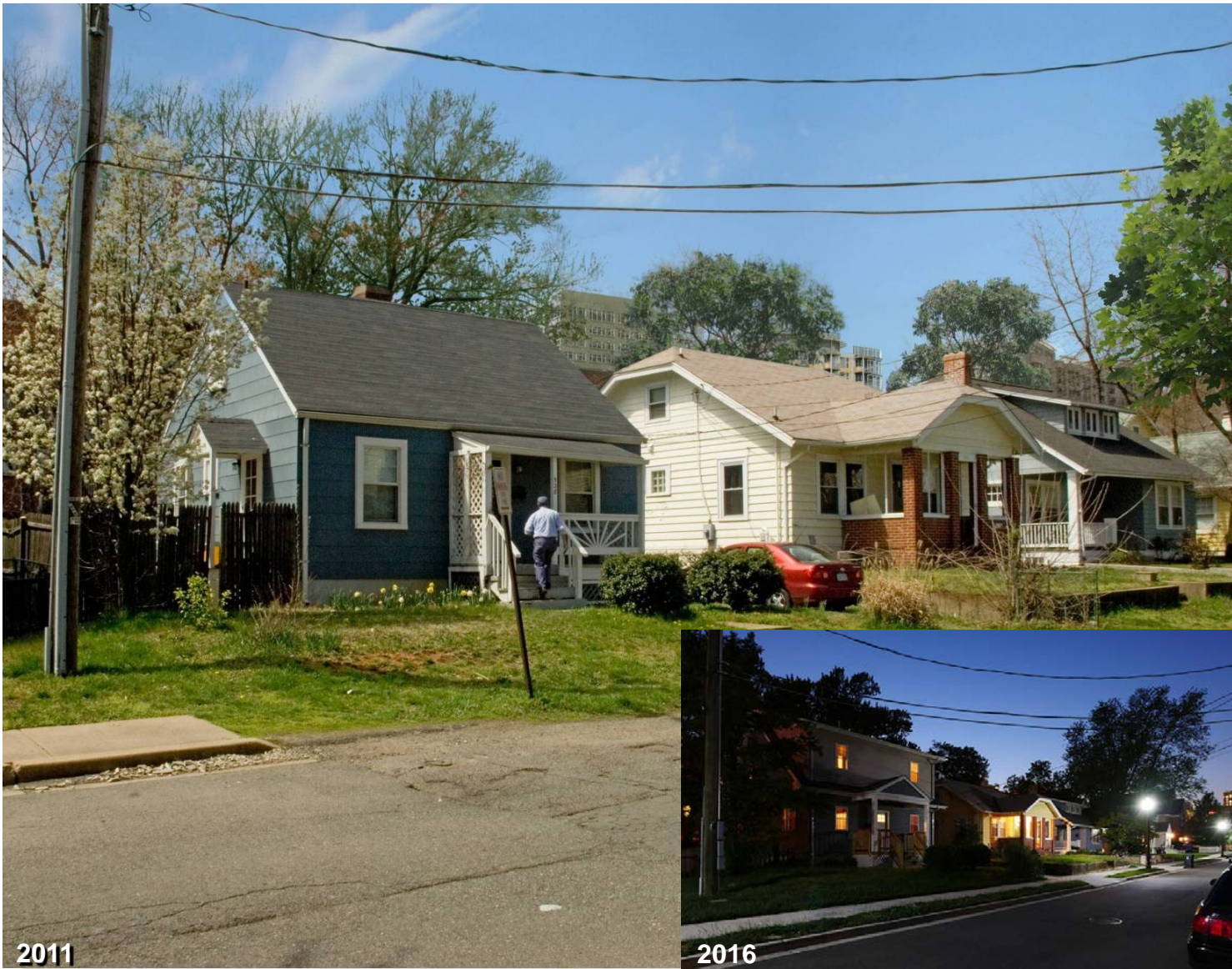
INTERFACE MULTIMEDIA





## Presentation Agenda

1. Visibility from Ashton Heights
2. Open Space Context
3. Landscape Design
4. Loading Area Design
5. Ground Floor Elevations
6. TDM Mitigation Strategies
7. Construction Sequencing



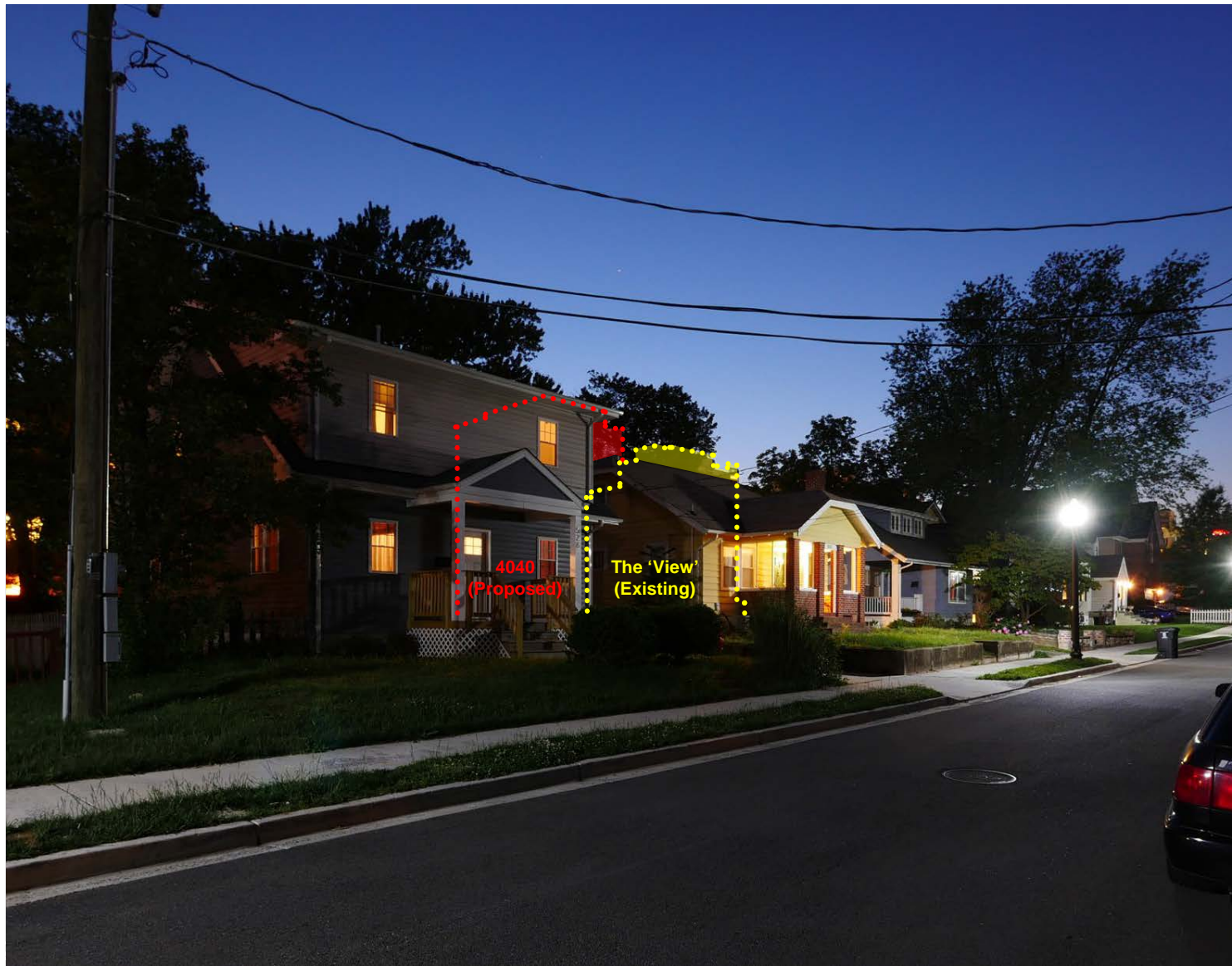
2011

2016

# View from Ashton Heights



View looking northwest from N. Piedmont Street



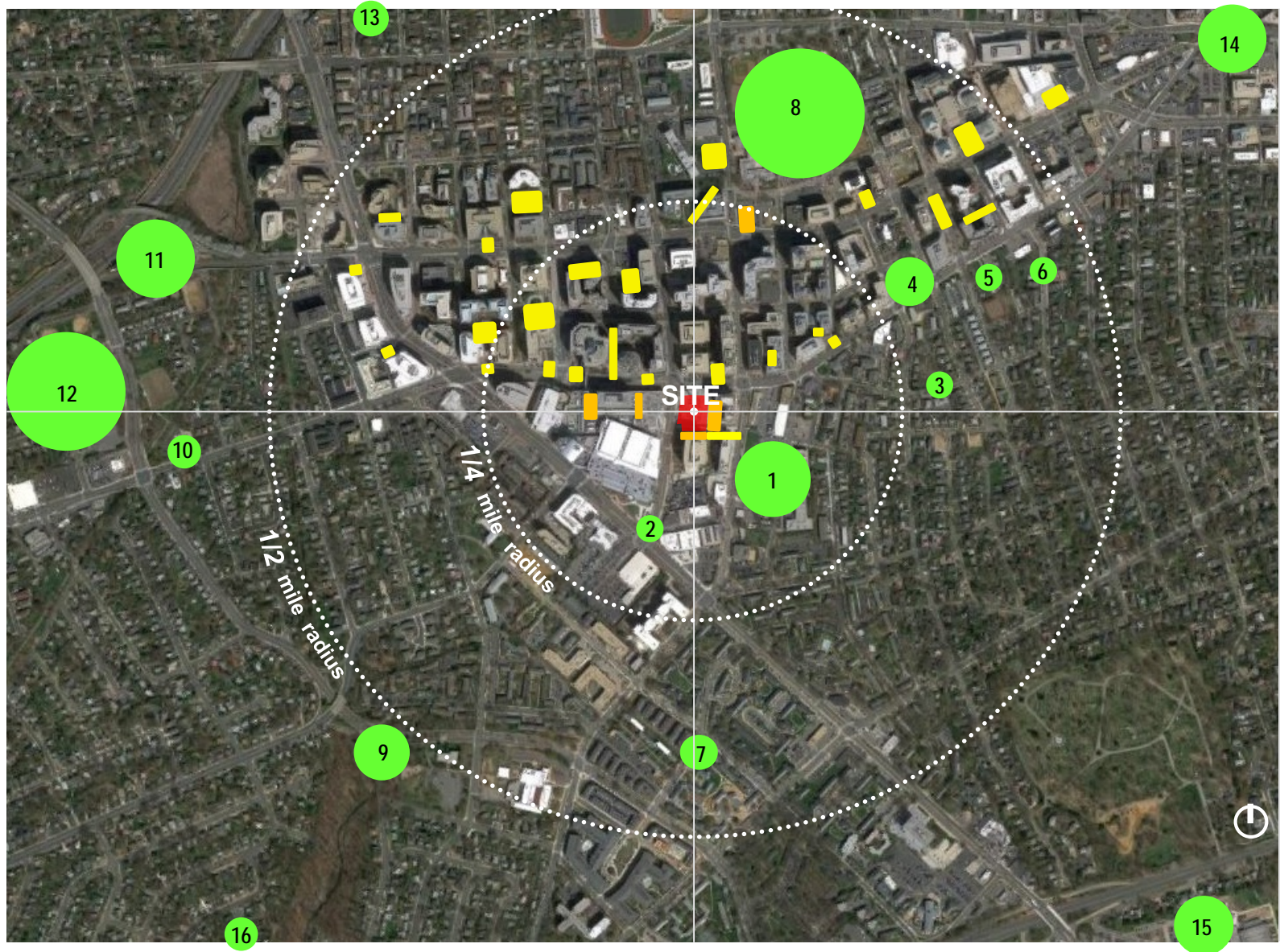
## View from Ashton Heights

Rooftop management plan will comply with standard site plan condition language for lighting and uses, and will include the following:

- *Compliance with Dark Sky Initiatives*
- *Dimmable Lighting*
- *Designated hours of operation / usage*



View looking northwest from N. Piedmont Street



# Open Space Context

**Nearby County Parks:**

1. Mosaic Park
2. Glebe and Randolph Park
3. Gum Ball Park
4. Oakland Park
5. Maury Park
6. Herselle Milliken Park
7. Henry Wright Park
8. Quincy Park
9. Lubber Run CC
10. Constitution Garden Park
11. Ballston Pond Park
12. Fields Park
13. Clarendon Station Park
14. Clarendon Central Park
15. Thomas Jefferson Park
16. Edison Park

**Nearby Plazas**

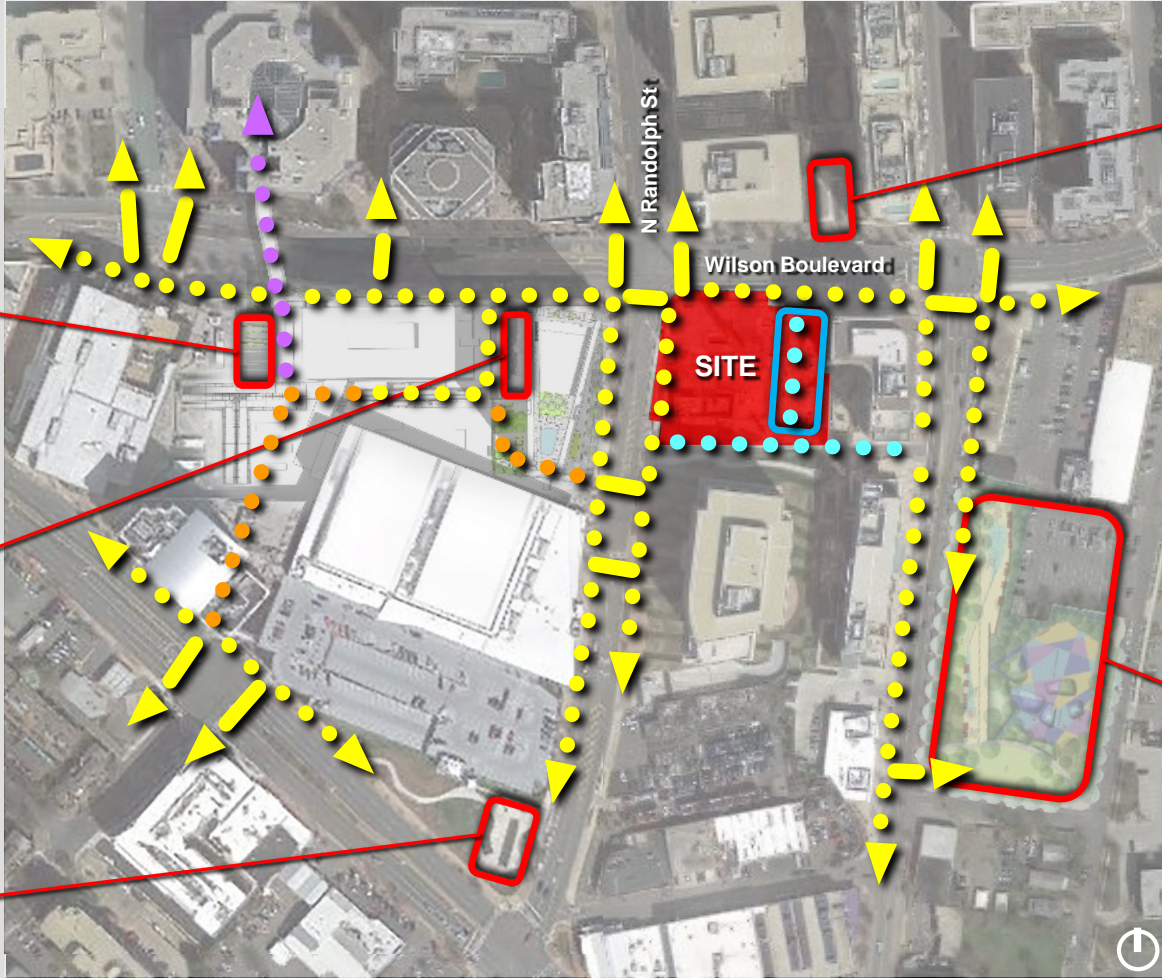
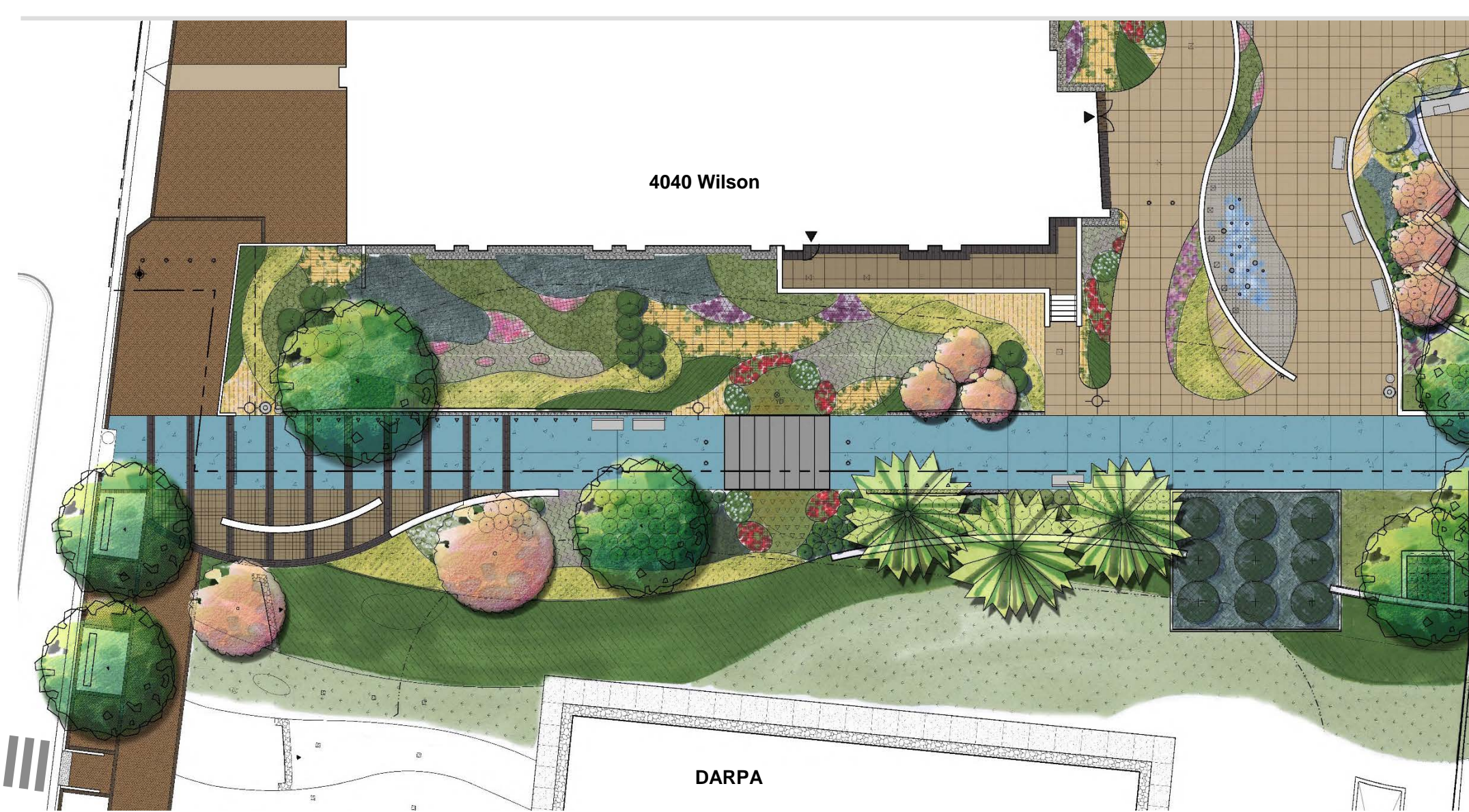


Photo courtesy of Terry Serie



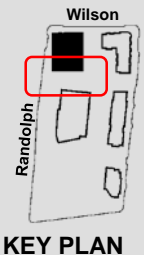
# Landscape Design





4040 Wilson

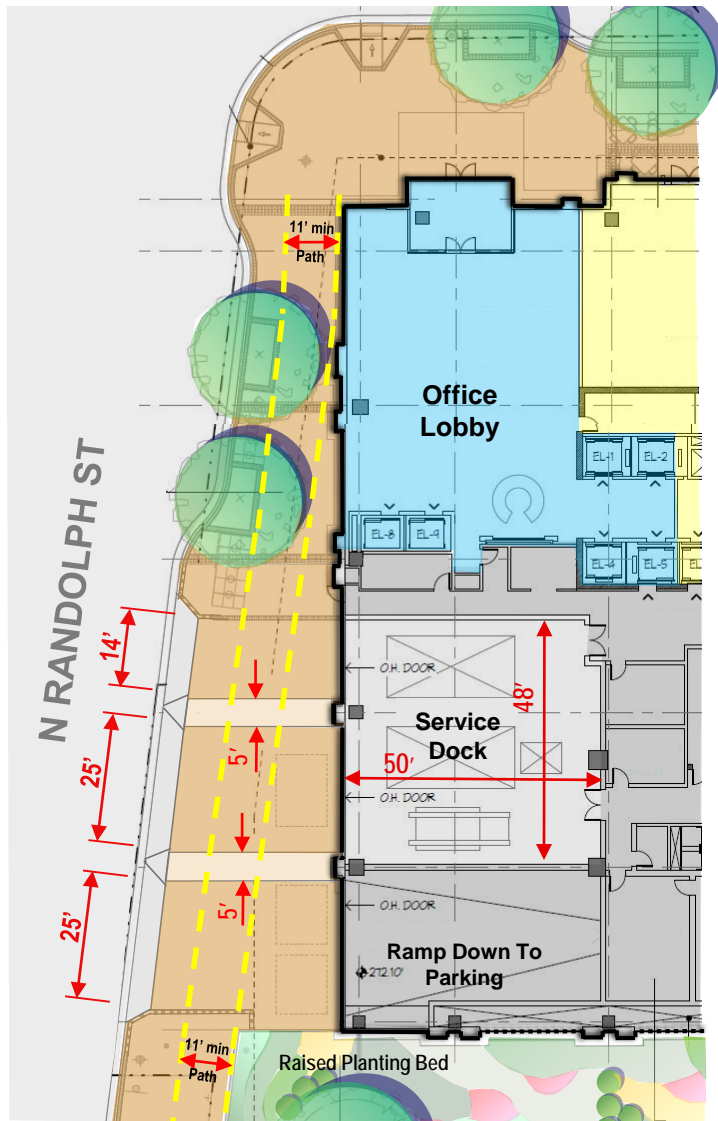
DARPA







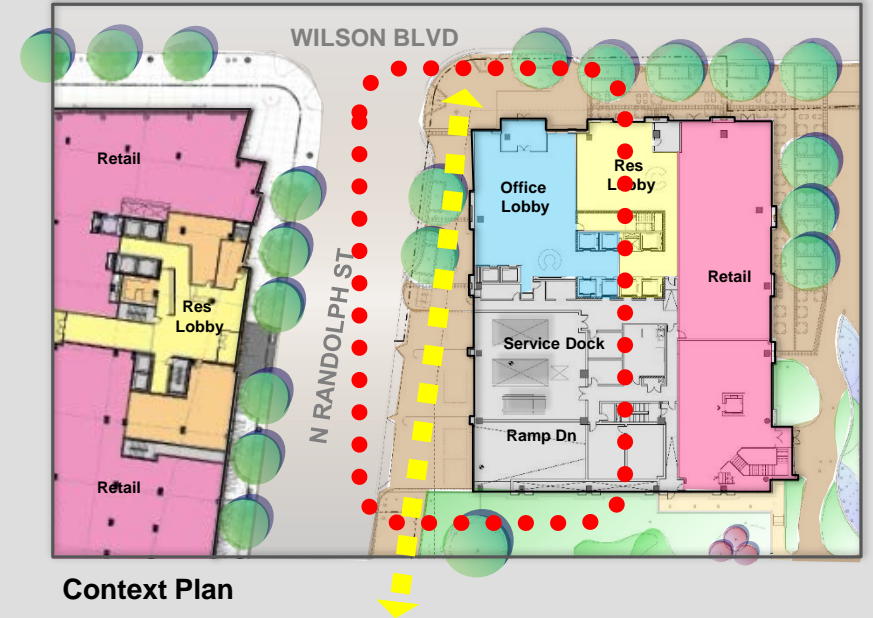
# Loading Area Design



Enlarged Plan



Service Door Examples



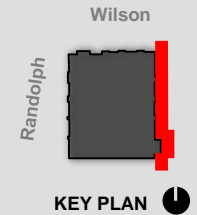
Context Plan



North (Wilson Boulevard) Elevation

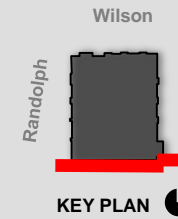


East (Plaza) Elevation

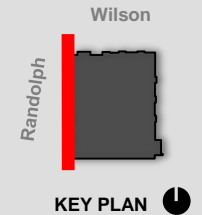




South Elevation



West (Randolph Street) Elevation



## A. Participation and Funding of TDM

- Establish relationship with Arlington Transportation Partners (ATP)
- Designation of Property Transportation Coordinator
- Contribution to Arlington County Community Services

## B. Facilities and Improvements

- Provision of Information Displays
- Establish Bicycle Management Plan

## C. Car-pool, Van-pool and Car-share Parking and Promotion

- Provision of pre-loaded Smart Trip cards
- Bike-share or Car-share membership
- Reimbursement to County for performance monitoring study



## KEYNOTES

	Tower Crane
	Tower Crane Swing Radius
	Trash Chute
	Material Hoist
	Site Fencing
	Pedestrian Detours
	Covered Walkway
	Truck Route
	1 Flagman
	2 Fire Hydrant
	3 Dumpsters
	4 Clark Signage
	5 Staging
	6 Temporary Electric
	7 Temporary Water
	8 Jersey Barriers
	10 Field Trailers



THANK YOU!