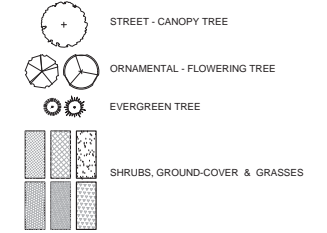


PRELIMINARY PLANT SCHEDULE:
TREES - SHADE, ORNAMENTAL AND EVERGREEN

KEY	BOTANICAL / COMMON NAME	SIZE	QTY. TOTAL	REMARKS
AC	AMELANCHIER CANADENSIS SERVICEBERRY			MULTI. MATCHING, FULL/DENSE
CC	CERCIS CANADENSIS REDBUD		5	MULTI. MATCHING, FULL/DENSE
CF	CORNUS FLORIDA AMERICAN DOGWOOD		7	STRONG CENTRAL LEADER
CJ	CRYPTOMERIA JAPONICA CRYPTOMERIA			STRONG LEADER, FULL/DENSE
CL	X CUPRESSOCYPARIS LEYLANDII LEYLAND CYPRESS			STRONG LEADER, FULL/DENSE
CV	CHONANTHUS VIRGINICUS FRINGE TREE		8	STRONG CENTRAL LEADER
GT	GLEDTISIA TRIACANTHOS V. INERMIS HONEYLOCUST			STRONG CENTRAL LEADER
HT	HALESIA TETRAPTERA CAROLINA SILVERBELL			STRONG CENTRAL LEADER
IF	ILEX ATTENUATA 'FOSTERI' FOSTER'S HOLLY			STRONG LEADER, FULL/DENSE
MS	MAGNOLIA STELLATA STAR MAGNOLIA			MULTI. MATCHING, FULL/DENSE
MV	MAGNOLIA VIRGINIANA SWEETBAY MAGNOLIA			MULTI. MATCHING, FULL/DENSE
QB	QUERCUS BICOLOR SWAMP WHITE OAK		5	STRONG CENTRAL LEADER
QP	QUERCUS PHELLOS WILLOW OAK			STRONG CENTRAL LEADER
TO	THUJA OCCIDENTALIS ARBORVITAE			STRONG LEADER, FULL/DENSE

CONCEPT PLANT LEGEND:



PRELIMINARY CANOPY COVERAGE CALCULATIONS:
TO COMPLY WITH SECTION 61-10.C OF THE CHESAPEAKE BAY PRESERVATION ORDINANCE

GOAL: 10% LOT COVERAGE WITH CANOPY TREES AT 20 YEARS' MATURITY

TOTAL SITE AREA	55,667 s.f.		
±.10 (10%) REQUIRED CANOPY COVERAGE AT 20 YEARS =	5,567 s.f.		
EXISTING TREE CANOPY TO REMAIN	0 s.f.		
PROPOSED TREE CANOPY COVERAGE	QUANTITY	20 YEAR COVERAGE (SQ. FT.)	TOTAL (SQ. FT.)
		NON-NATIVE	NATIVE
Cercis canadensis	5	218.75	1,093.75 s.f.
Chonanthus virginicus	8	137.5	1,100 s.f.
Cornus florida	7	218.75	1,531.25 s.f.
Quercus bicolor	5	393.75	1,968.75 s.f.
			5,693.75 s.f.
PROPOSED CANOPY COVERAGE AT 20 YEARS:	0 s.f. + 5,693.75 s.f. = 5,693.75 s.f.		
TOTAL CANOPY COVERAGE AT 20 YEARS (FROM ABOVE):	0 s.f. + 5,693.75 s.f. = 5,693.75 s.f.		

GOAL IS MET: 5,693.75 SQ. FT. IS GREATER THAN 5,567 SQ. FT.

NOTES:
 A. PUBLIC STREET TREES (14) WERE NOT INCLUDED IN THIS CALCULATION.
 B. 20 YEAR CANOPY DATA FROM: 20-YR CANOPY WORKSHEET IN ARLINGTON COUNTY STORMWATER MANUAL.
 C. FINAL TREE COUNT, SPECIES SELECTION, AND LOCATIONS WILL BE DETERMINED AT FINAL LANDSCAPE PLAN.

OPEN SPACE CALCULATION (R-C SOUTH BLOCK ONLY)

TOTAL SITE AREA:	36,417 S.F.
REQUIRED OPEN SPACE:	10% OR 3,642 S.F.
PROPOSED OPEN SPACE:	15% OR 5,470 S.F.

(INCLUDES ROOF TERRACES, GREEN ROOFS & AMENITIES. EXCLUDES STREETS/CAPE)

TREE REPLACEMENT TABULATION

TOTAL TREE REPLACEMENT REQUIREMENT = 20 (SEE SHEET C-06)
CANOPY TREES PROVIDED = 19 (INCLUDES STREET TREES)
30 UNDERSTORY @ 3:1 = 10
TOTAL = 29 TREES

- NOTES:
- FOR EXISTING CONDITIONS, SEE CERTIFIED SURVEY--SHEET C-02.
 - FOR PROPOSED UTILITY INFORMATION, SEE SHEET C-14.
 - THE TOTAL OF EXISTING TREES TO BE REMOVED IS 18, WITH A COMPUTED REPLACEMENT TOTAL OF 20. FOR EXISTING TREE INVENTORY AND REPLACEMENT INFORMATION, SEE SHEETS C-05 TO C-07. ALSO SEE THE TABLE ON THIS SHEET.
 - TREES SHOWN (SPECIES & LOCATION) ARE PRELIMINARY AND FOR ILLUSTRATIVE PURPOSE ONLY. FINAL TREE LOCATIONS AND QUANTITIES ARE SUBJECT TO REVISION AT TIME OF FINAL LANDSCAPE PLAN REVIEW.

NORTH (VCS 83)

ENGINEERS ■ PLANNERS ■ LANDSCAPE ARCHITECTS ■ SURVEYORS ■ 3D LASER SCANNING

VIKA VIRGINIA, LLC
 8180 GREENSBORO DRIVE SUITE 200 ■ TYSONS, VIRGINIA 22102
 (703) 442-7800 ■ FAX (703) 761-2787
 WWW.VIKA.COM

GRAPHIC SCALE

(IN FEET)
 1 inch = 20 ft.

NO.	DATE	DESCRIPTION
5	02/02/18	4.1 RESUBMISSION
4	01/16/18	4.1 RESUBMISSION
3	08/25/17	FORMAL 4.1 SUBMISSION
2	07/07/17	DIGITAL 4.1 RE-SUBMISSION
1	12/21/16	DIGITAL 4.1 SUBMISSION

COUNTY REVISIONS

SUBMITTED DATE:	DESIGNED BY:	PROJECT/FILE NO.
SEPTEMBER 16, 2016	CHECKED BY: JAK	VV7845B

VER. 10.24

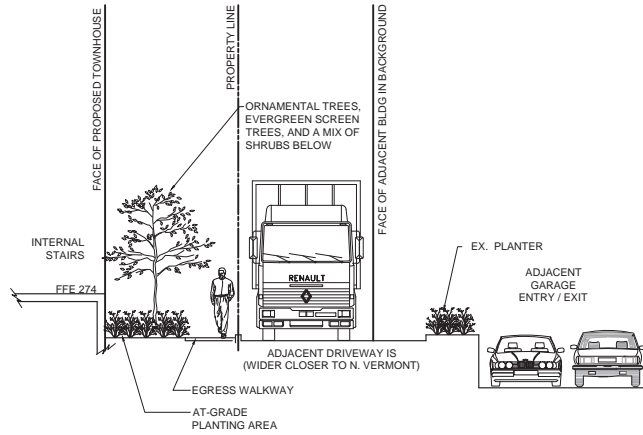
ARLINGTON COUNTY, VIRGINIA
 DEPARTMENT OF ENVIRONMENTAL SERVICES

LANDSCAPE PLAN

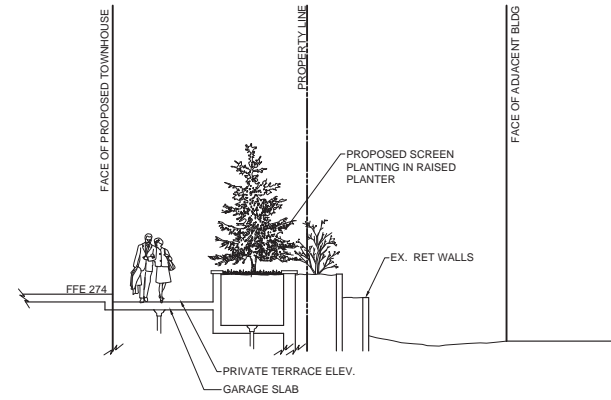
11th & VERMONT
 4.1 SUBMISSION
 Arlington County, Virginia

SCALE: 1" = 20'

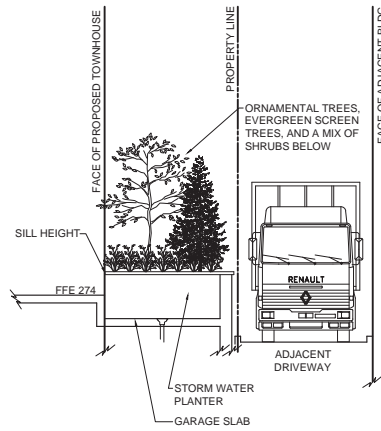
SHEET: L-01



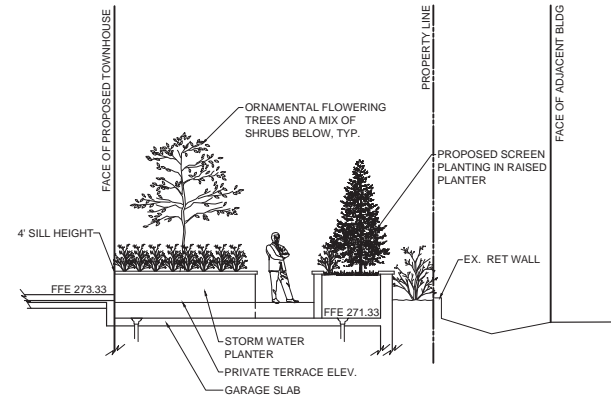
SCHMATIC SECTION "A" - VIEW TO THE EAST 1" = 5'



SCHMATIC SECTION "C" - VIEW TO THE NORTH 1" = 5'

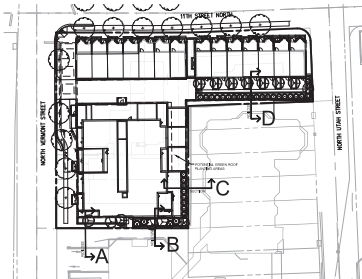


SCHMATIC SECTION "B" - VIEW TO THE EAST 1" = 5'



SCHMATIC SECTION "D" - VIEW TO THE EAST 1" = 5'

SECTION KEY



VKA
 ENGINEERS ■ PLANNERS ■ LANDSCAPE ARCHITECTS ■ SURVEYORS ■ 3D LASER SCANNING
 VKA VIRGINIA, LLC
 8180 GREENSBORO DRIVE SUITE 200 ■ TYSONS, VIRGINIA 22102
 (703) 442-7800 ■ FAX (703) 761-2787
 WWW.VKA.COM

GRAPHIC SCALE
 (IN FEET)
 1 inch = 20 ft.

NO.	DATE	DESCRIPTION
5	02/02/18	4.1 RESUBMISSION
4	01/16/18	4.1 RESUBMISSION
3	08/25/17	FORMAL 4.1 SUBMISSION
2	07/07/17	DIGITAL 4.1 RE-SUBMISSION
1	12/21/16	DIGITAL 4.1 SUBMISSION

COUNTY REVISIONS
 SUBMITTED DATE: DESIGNED:JAK PROJECT/FILE NO. VV78458
 SEPTEMBER 16, 2016 CHECKED:JAK

ARLINGTON COUNTY, VIRGINIA
 DEPARTMENT OF ENVIRONMENTAL SERVICES

LANDSCAPE SECTIONS
 11th & VERMONT
 4.1 SUBMISSION
 Arlington County, Virginia

SCALE: 1" = 20'

SHEET: L-02

VER. 10.24